




HIKVISION DS-PDPC12P-EG2-WB Wireless PIR-Camera Detector User Guide

[Home](#) » [Hikvision](#) » HIKVISION DS-PDPC12P-EG2-WB Wireless PIR-Camera Detector User Guide 

HIKVISION DS-PDPC12P-EG2-WB Wireless
PIR-Camera Detector User Guide

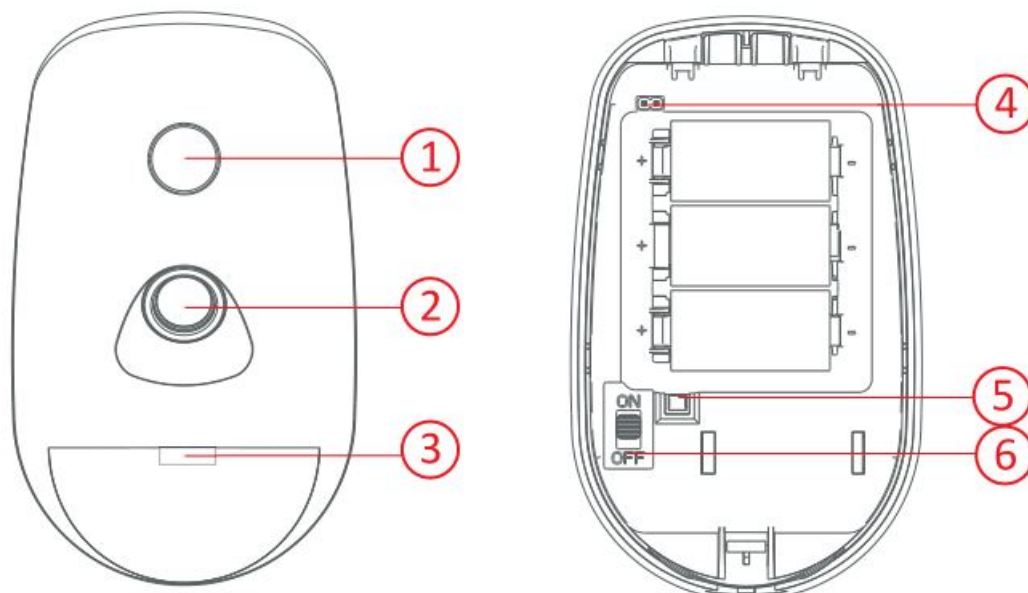


DS-PDPC12P-EG2-WB(B)
Wireless PIR-Camera Detector
Quick Start Guide

Contents

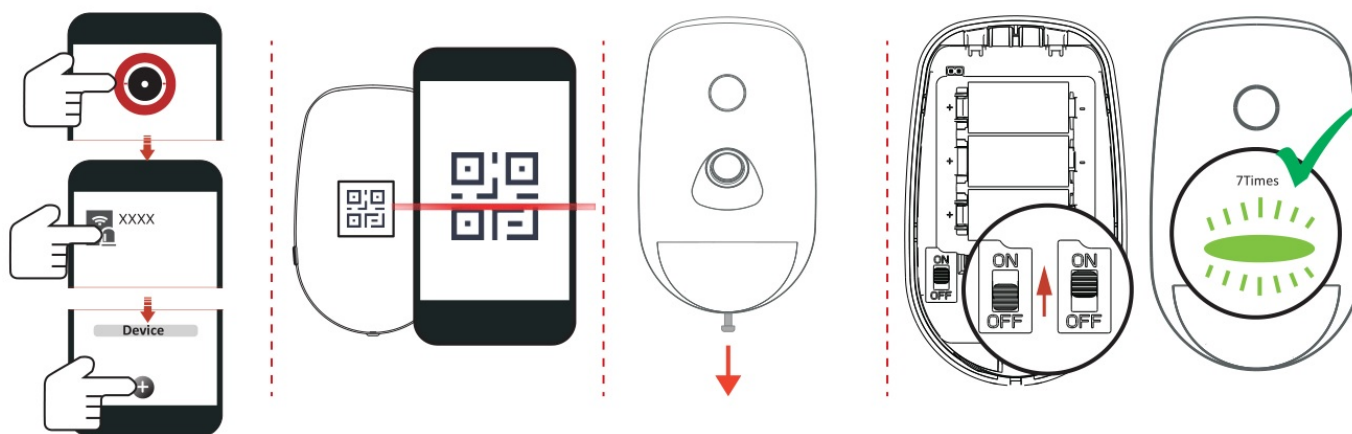
- 1 1) Appearance
- 2 2) Enrollment
- 3 3) Installation
- 4 4) Test
- 5 User Manual
- 6 Specification
- 7 Documents / Resources
 - 7.1 References
- 8 Related Posts

1) Appearance

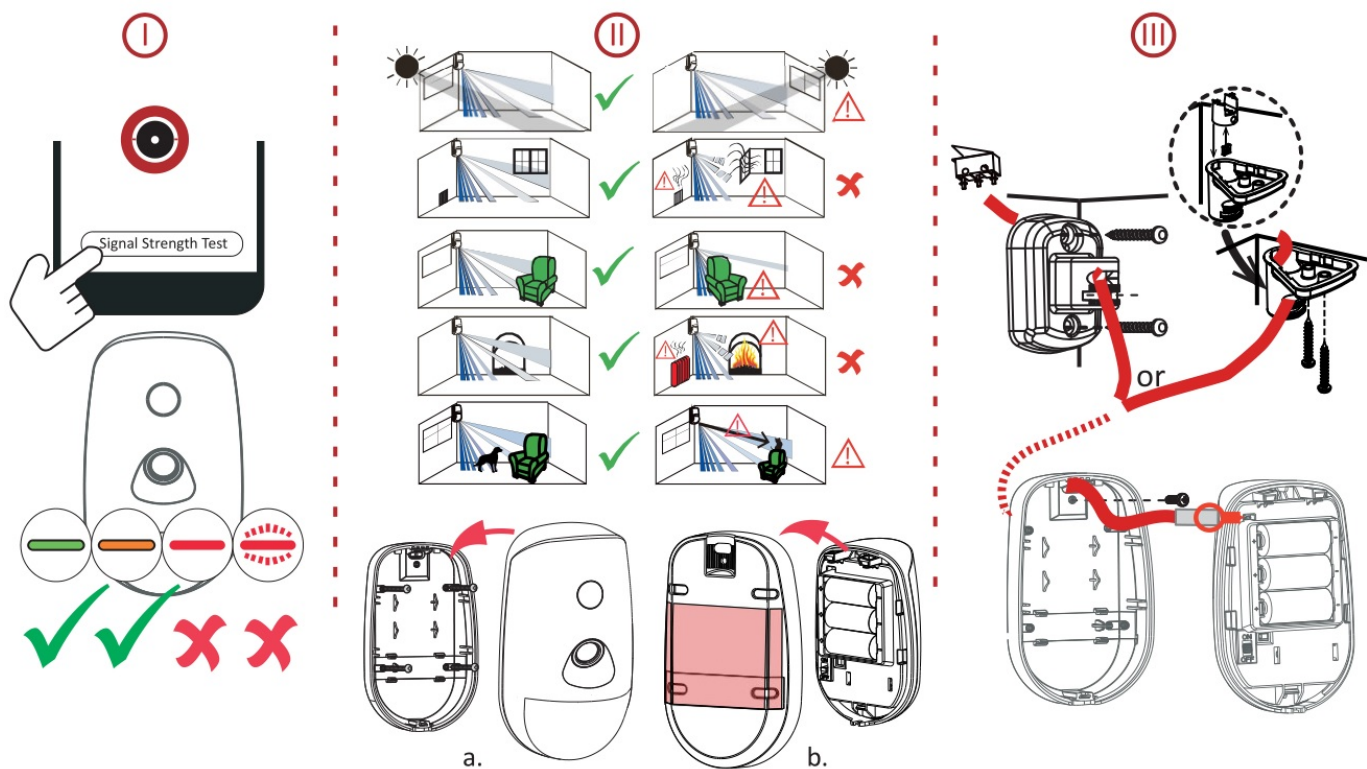


1. Fill Light
2. Camera
3. LED Indicator
4. Bracket Tamper
5. Tamper Button
6. Power Switch Interface

2) Enrollment



3) Installation



I. Check signal strength.

II. Install the device.

a. Mount the detector with screw.

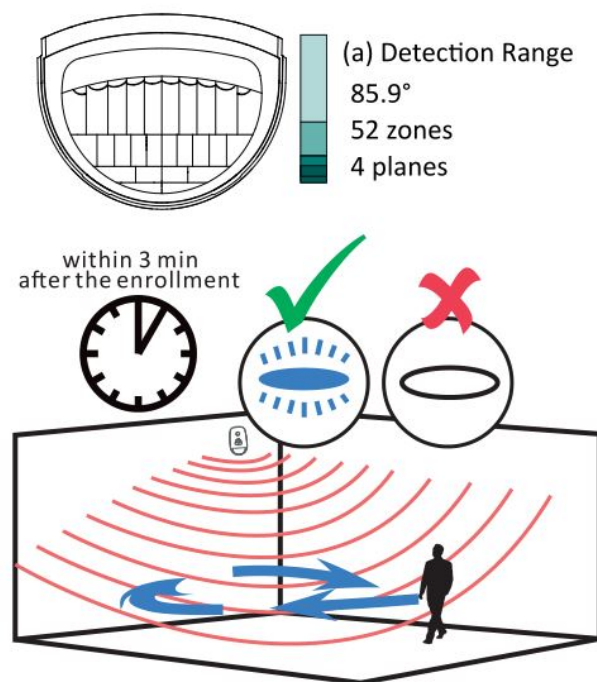
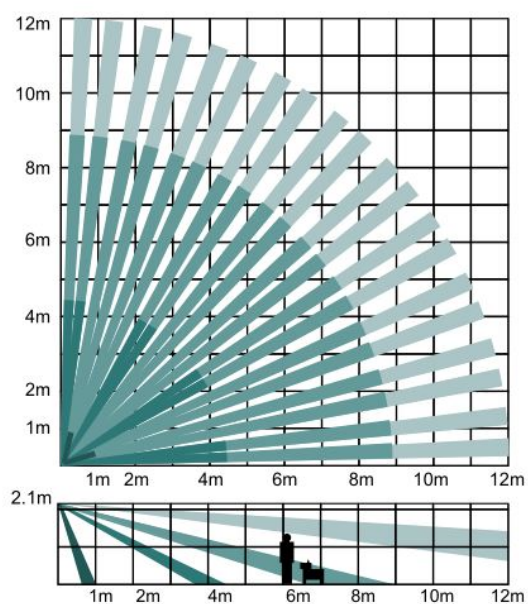
b. Mount the detector with sponge tape.

Note: Installing with sponge tape is non EN compliant.

III. (Optional) Install the device with bracket.

Note: Installing with ceiling bracket is non EN compliant.

4) Test





Scan the QR code for more information and operation help.

Specification

Detection range	12 m, 85.9°
Auto sensitivity	Yes
Pet immunity	Up to 30 Kg (Height<40 cm)
Camera coverage	90°(H), 70°(V)
Auto day and night	Colour, Black & White
Image size	160 × 120, 320 × 240, 640 × 480
Tamper protection	Front & Back
LED indicator	Alarm (blue), signal strength (red, green, amber)
Operating temperature	-10 °C to 55 °C (14 °F to 131 °F)
Storage temperature	-20 °C to 60 °C (-4 °F to 140 °F)
Operating humidity	10% to 90%
Installation height	1.8 to 2.4 m (nominal mounting height = 2.1 m)
Dimension (W × H × D)	72.2 mm × 120.5 mm × 56.7 mm
Weight	210 g
Transmission frequency	433 MHz
RF range	0.8Km (open area)
Battery	CR123A × 3 (included), 3V/1600mAh
Standard battery life	6 years
Low voltage value	2.45 V
Voltage range	Fully charged (new) to 2.45 VDC (battery)
Current	Max. current: 1.5 A Quiescent current: 20 uA

Note: when the low voltage message appears there will be at least 30 days of use.

©2021 Hangzhou Hikvision Digital Technology Co., Ltd. Allrights reserved.

About this Manual

The Manual includes instructions for using and managing the Product. Pictures, charts, images and all other information hereinafter are for description and explanation only. The information contained in the Manual is subject to change, without notice, due to firmware updates or other reasons. Please find the latest version of this Manual at the Hikvision website (<https://www.hikvision.com/>).

Please use this Manual with the guidance and assistance of professionals trained in supporting the Product.

HIKVISION and other Hikvision's trademarks and logos are the properties of Hikvision in various jurisdictions. Other trademarks and logos mentioned are the properties of their respective owners.

Disclaimer

TO THE MAXIMUM EXTENT PERMITTED BY APPLICABLE LAW, THIS MANUAL AND THE PRODUCT DESCRIBED, WITH ITS HARDWARE, SOFTWARE AND FIRMWARE, ARE PROVIDED "AS IS" AND "WITH ALL FAULTS AND ERRORS". HIKVISION MAKES NO WARRANTIES, EXPRESS OR IMPLIED, INCLUDING WITHOUT LIMITATION, MERCHANTABILITY, SATISFACTORY QUALITY, OR FITNESS FOR A PARTICULAR PURPOSE. THE USE OF THE PRODUCT BY YOU IS AT YOUR OWN RISK.

IN NO EVENT WILL HIKVISION BE LIABLE TO YOU FOR ANY SPECIAL, CONSEQUENTIAL, INCIDENTAL, OR INDIRECT DAMAGES, INCLUDING, AMONG OTHERS, DAMAGES FOR LOSS OF BUSINESS PROFITS, BUSINESS INTERRUPTION, OR LOSS OF DATA, CORRUPTION OF SYSTEMS, OR LOSS OF DOCUMENTATION, WHETHER BASED ON BREACH OF CONTRACT, TORT (INCLUDING NEGLIGENCE), PRODUCT LIABILITY, OR OTHERWISE, IN CONNECTION WITH THE USE OF THE PRODUCT, EVEN IF HIKVISION HAS BEEN ADVISED OF THE POSSIBILITY OF SUCH DAMAGES OR LOSS.

YOU ACKNOWLEDGE THAT THE NATURE OF THE INTERNET PROVIDES FOR INHERENT SECURITY RISKS, AND HIKVISION SHALL NOT TAKE ANY RESPONSIBILITIES FOR ABNORMAL OPERATION, PRIVACY LEAKAGE OR OTHER DAMAGES RESULTING FROM CYBER-ATTACK, HACKER ATTACK, VIRUS INFECTION, OR OTHER INTERNET SECURITY RISKS; HOWEVER, HIKVISION WILL PROVIDE TIMELY TECHNICAL SUPPORT IF REQUIRED.

YOU AGREE TO USE THIS PRODUCT IN COMPLIANCE WITH ALL APPLICABLE LAWS, AND YOU ARE SOLELY RESPONSIBLE FOR ENSURING THAT YOUR USE CONFORMS TO THE APPLICABLE LAW. ESPECIALLY, YOU ARE RESPONSIBLE, FOR USING THIS PRODUCT IN A MANNER THAT DOES NOT INFRINGE ON THE RIGHTS OF THIRD PARTIES, INCLUDING WITHOUT LIMITATION, RIGHTS OF PUBLICITY, INTELLECTUAL PROPERTY RIGHTS, OR DATA PROTECTION AND OTHER PRIVACY RIGHTS. YOU SHALL NOT USE THIS PRODUCT FOR ANY PROHIBITED END-USES, INCLUDING THE DEVELOPMENT OR PRODUCTION OF WEAPONS OF MASS DESTRUCTION, THE DEVELOPMENT OR PRODUCTION OF CHEMICAL OR BIOLOGICAL WEAPONS, ANY ACTIVITIES IN THE CONTEXT RELATED TO ANY NUCLEAR EXPLOSIVE OR UNSAFE NUCLEAR FUEL-CYCLE, OR IN SUPPORT OF HUMAN RIGHTS ABUSES. IN THE EVENT OF ANY CONFLICTS BETWEEN THIS MANUAL AND THE APPLICABLE LAW, THE LATER PREVAILS.



This product and – if applicable – the supplied accessories too are marked with "CE" and comply therefore with the applicable harmonized European standards listed under the RE Directive 2014/53/EU, the EMC Directive 2014/30/EU, the RoHS Directive 2011/65/EU.



2012/19/EU (WEEE directive): Products marked with this symbol cannot be disposed of as unsorted municipal waste in the European Union. For proper recycling, return this product to your local supplier upon the purchase of equivalent new equipment, or dispose of it at designated collection points. For more information see: www.recyclethis.info



2006/66/EC (battery directive): This product contains a battery that cannot be disposed of as unsorted municipal waste in the European Union. See the product documentation for specific battery information. The battery is marked with this symbol, which may include lettering to indicate cadmium (Cd), lead (Pb), or mercury (Hg). For proper recycling, return the battery to your supplier or to a designated collection point. For more information see: www.recyclethis.info

BATTERY CAUTION



replacement of a battery with an incorrect type that can defeat a safeguard (for example, in the case of some lithium battery types);

– disposal of a battery into fire or a hot oven, or mechanically crushing or cutting of a battery, that can result in an explosion;

– leaving a battery in an extremely high temperature surrounding environment that can result in an explosion or the leakage of flammable liquid or gas; and

– a battery subjected to extremely low air pressure that may result in an explosion or the leakage of flammable liquid or gas

Chemical burning danger

Do not swallow the battery.

Keep new and used batteries away from the children.

If you think batteries might have been swallowed or placed inside any part of the body, seek immediate medical attention.

Risk of explosion if battery is replaced by an incorrect type.

Replacement of a battery with an incorrect type that can defeat a safeguard.

Dispose of used batteries according to the instructions and local regulation.

If the battery compartment does not close securely, stop using the product and keep it away from children.

INSTALLATION CAUTION



The additional force shall be equal to three times the weight of the equipment but not less than 50N. The equipment and its associated mounting means shall remain secure during the installation. After the installation, the equipment, including any associated mounting plate, shall not be damaged.



FCC Information

Please take attention that changes or modification not expressly approved by the party responsible for compliance could void the user's authority to operate the equipment.

FCC compliance: This equipment has been tested and found to comply with the limits for a Class B digital device, pursuant to part 15 of the

FCC Rules. These limits are designed to provide reasonable protection against harmful interference in a residential installation. This equipment generates, uses and can radiate radio frequency energy and, if not installed and used in accordance with the instructions, may cause harmful interference to radio communications. However, there is no guarantee that interference will not occur in a particular installation. If this equipment does cause harmful interference to radio or television reception, which can be determined by turning the equipment off and on, the user is encouraged to try to correct the interference by one or more of the following measures:

—Reorient or relocate the receiving antenna.

—Increase the separation between the equipment and receiver.

—Connect the equipment into an outlet on a circuit different from that to which the receiver is connected.

—Consult the dealer or an experienced radio/TV technician for help.

This equipment should be installed and operated with a minimum distance 20cm between the radiator and your body.

FCC Conditions



This device complies with part 15 of the FCC Rules. Operation is subject to the following two conditions:

1. This device may not cause harmful interference.

2. This device must accept any interference received, including interference that may cause undesired operation.

Hangzhou Hikvision Digital Technology CO.,Ltd.
No.555 Qianmo Road, Binjiang District, Hangzhou 310052, China

Documents / Resources

	HIKVISION DS-PDPC12P-EG2-WB Wireless PIR-Camera Detector [pdf] User Guide D0912001, 2ADTD-D0912001, 2ADTDD0912001, DS-PDPC12P-EG2-WB Wireless PIR-Camera Detector, DS-PDPC12P-EG2-WB, Wireless PIR-Camera Detector
	HIKVISION DS-PDPC12P-EG2-WB Wireless PIR-Camera Detector [pdf] User Guide D0912021, 2ADTD-D0912021, 2ADTDD0912021, DS-PDPC12P-EG2-WB Wireless PIR-Camera Detector, DS-PDPC12P-EG2-WB, Wireless PIR-Camera Detector

References

- [Hikvision US | The world's largest video surveillance manufacturer |](#)
- [HOME](#)
- [Hikvision US | The world's largest video surveillance manufacturer |](#)