




HIKVISION DS-PDD12P-EG2-WA Wireless Dual-Tech Detector User Manual

[Home](#) » [Hikvision](#) » HIKVISION DS-PDD12P-EG2-WA Wireless Dual-Tech Detector User Manual 



DS-PDD12P-EG2-WA User Manual

50131-1:2006+A2:2017
50131-2-4:2008
50131-5-3:2017
Security Grade(SG) 2
Environmental Class(EC) II

Contents

- [1 Wireless Dual-Tech Detector](#)
- [2 Specification](#)
- [3 Disclaimer](#)
- [4 FCC Information](#)
- [5 Documents / Resources](#)
- [6 Related Posts](#)

Wireless Dual-Tech Detector

1. APPEARANCE

1. Indicator
2. Bracket Tamper Port
3. Battery
4. Tamper Switch
5. Power Switch

2. ENROLLMENT

3. INSTALLATION

- I. Check signal strength.
- II. Install the device.
 - a. Mount the detector with a screw.
 - b. Mount the detector with sponge tape.
- III. (Optional) Install the device with a bracket.

4. TEST



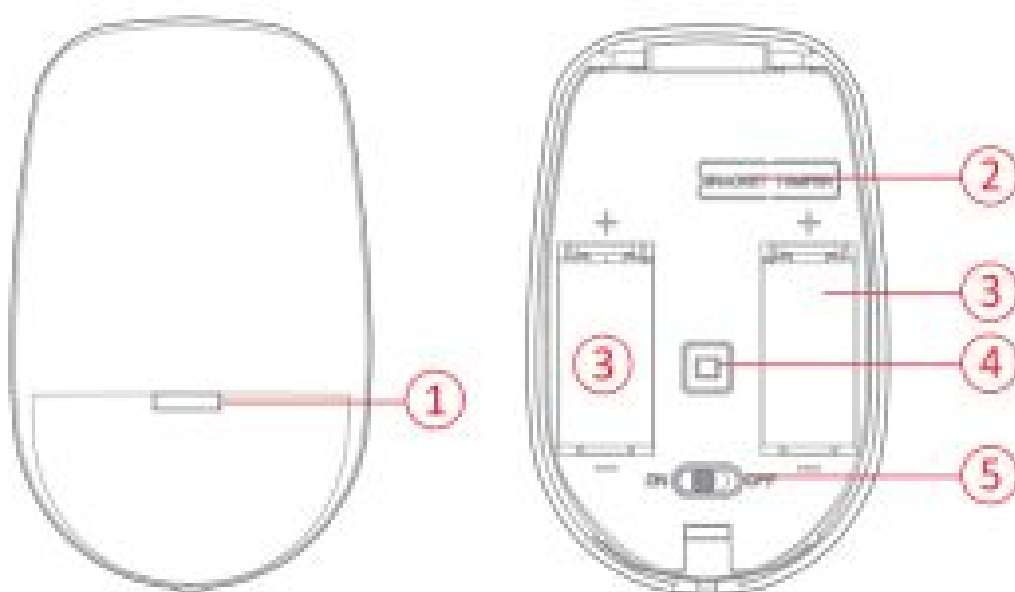
<http://enpinfodata.hikvision.com/analysisQR/showQR/8438e6da>

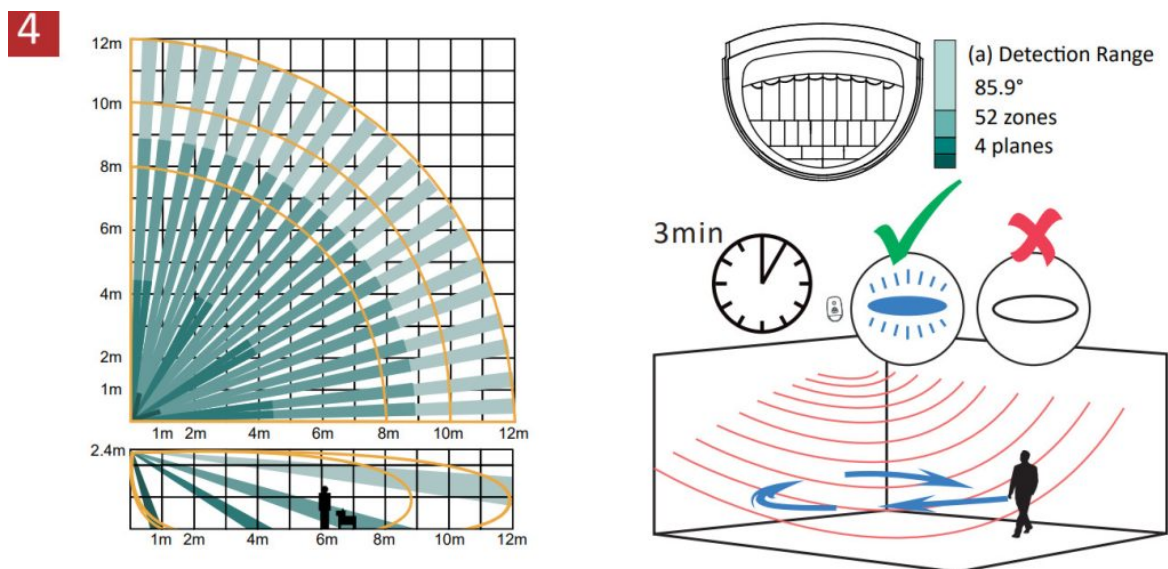
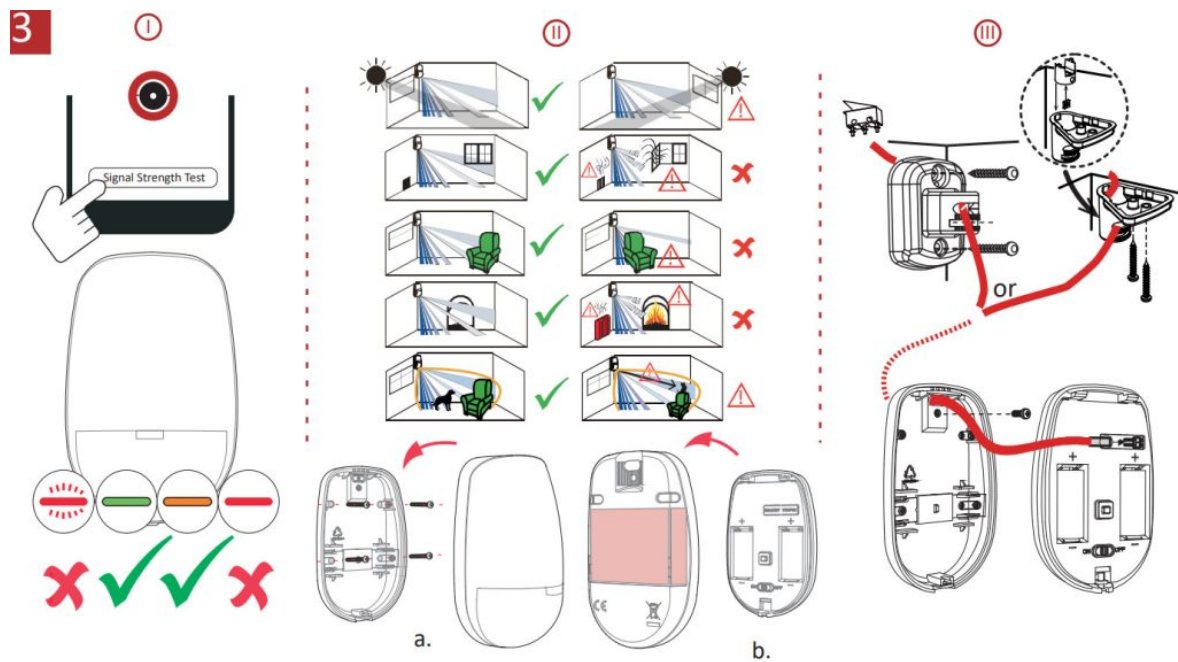
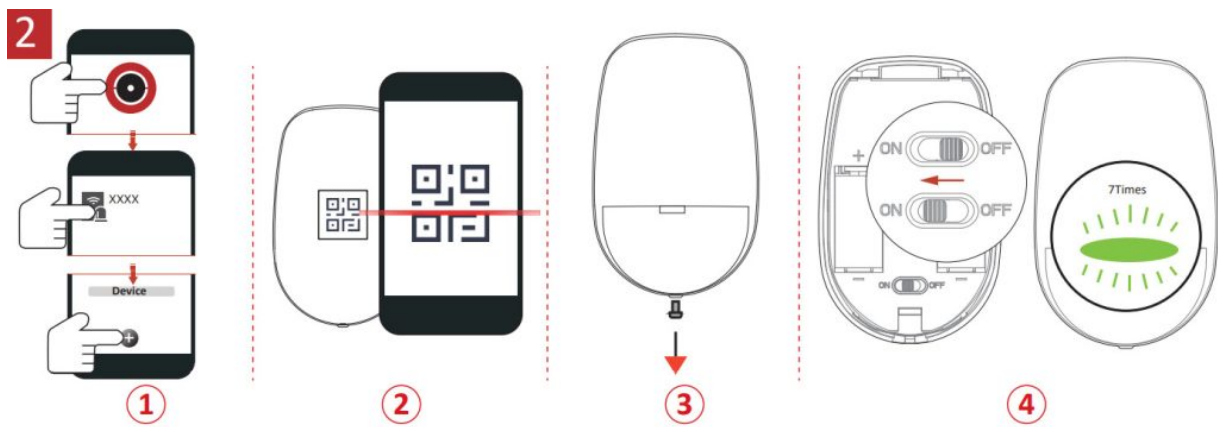
Scan the QR code for more information and operation help.

Specification

Detection range	12m, 85.9°
Auto sensitivity	Yes
Pet immunity	Up to 30Kg (Height < 40cm)
Microwave frequency	24Ghz (24 Ghz to 24.25 Ghz)
Tamper protection	Front & Back
LED indicators	Green(PIR), Orange(microwave), Blue(alarm)
Operating temperature	-10 °C to 55 °C (14 °F to 131 °F) -10 °C to 40 °C (14 °F to 104 °F) EN Certified
Storage temperature	-20 °C to 60 °C (-4 °F to 140 °F)
Operating humidity	10% to 90%
Installation height	1.8 to 2.4m
Dimension (W x H x D)	65.5mm x 103mm x 48.5mm
Weight	141g
Transmission frequency	915MHz
RF range	1.6Km (free space)
Battery	CR123A x 2 (included)
Standard battery life	5 years

1





©2021 Hangzhou Hikvision Digital Technology Co., Ltd. All rights reserved.

About this Manual

The Manual includes instructions for using and managing the Product. Pictures, charts, images, and all other information hereinafter are for description and explanation only. The information contained in the Manual is subject to change, without notice, due to firmware updates or other reasons. Please find the latest version of this Manual at the Hikvision website (<https://www.hikvision.com/>)

Please use this Manual with the guidance and assistance of professionals trained in supporting the Product.

HIKVISION and other Hikvision trademarks and logos are the properties of Hikvision in various

jurisdictions. Other trademarks and logos mentioned are the

Disclaimer

TO THE MAXIMUM EXTENT PERMITTED BY APPLICABLE LAW, THIS MANUAL AND THE PRODUCT DESCRIBED, WITH ITS HARDWARE, SOFTWARE, AND FIRMWARE, ARE PROVIDED “AS IS” AND “WITH ALL FAULTS AND ERRORS”. HIKVISION MAKES NO WARRANTIES, EXPRESS OR IMPLIED, INCLUDING WITHOUT LIMITATION, MERCHANTABILITY, SATISFACTORY QUALITY, OR FITNESS FOR A PARTICULAR PURPOSE. THE USE OF THE PRODUCT BY YOU IS AT YOUR OWN RISK. IN NO EVENT WILL HIKVISION BE LIABLE TO YOU FOR ANY SPECIAL, CONSEQUENTIAL, INCIDENTAL, OR INDIRECT DAMAGES, INCLUDING, AMONG OTHERS, DAMAGES FOR LOSS OF BUSINESS PROFITS, BUSINESS INTERRUPTION, OR LOSS OF DATA, CORRUPTION OF SYSTEMS, OR LOSS OF DOCUMENTATION, WHETHER BASED ON BREACH OF CONTRACT, TORT (INCLUDING NEGLIGENCE), PRODUCT LIABILITY, OR OTHERWISE, IN CONNECTION WITH THE USE OF THE PRODUCT, EVEN IF HIKVISION HAS BEEN ADVISED OF THE POSSIBILITY OF SUCH DAMAGES OR LOSS.

YOU ACKNOWLEDGE THAT THE NATURE OF THE INTERNET PROVIDES FOR INHERENT SECURITY RISKS, AND HIKVISION SHALL NOT TAKE ANY RESPONSIBILITY FOR ABNORMAL OPERATION, PRIVACY LEAKAGE, OR OTHER DAMAGES RESULTING FROM CYBER-ATTACK, HACKER ATTACK, VIRUS INFECTION, OR OTHER INTERNET SECURITY RISKS; HOWEVER, HIKVISION WILL PROVIDE TIMELY TECHNICAL SUPPORT IF REQUIRED. YOU AGREE TO USE THIS PRODUCT IN COMPLIANCE WITH ALL APPLICABLE LAWS, AND YOU ARE SOLELY RESPONSIBLE FOR ENSURING THAT YOUR USE CONFORMS TO THE APPLICABLE LAW. ESPECIALLY, YOU ARE RESPONSIBLE, FOR USING THIS PRODUCT IN A MANNER THAT DOES NOT INFRINGE ON THE RIGHTS OF THIRD PARTIES, INCLUDING WITHOUT LIMITATION, RIGHTS OF PUBLICITY, INTELLECTUAL PROPERTY RIGHTS, OR DATA PROTECTION, AND OTHER PRIVACY RIGHTS. YOU SHALL NOT USE THIS PRODUCT FOR ANY PROHIBITED END-USES, INCLUDING THE DEVELOPMENT OR PRODUCTION OF WEAPONS OF MASS DESTRUCTION, THE DEVELOPMENT OR PRODUCTION OF CHEMICAL OR BIOLOGICAL WEAPONS, ANY ACTIVITIES IN THE CONTEXT RELATED TO ANY NUCLEAR EXPLOSIVE OR UNSAFE NUCLEAR FUEL CYCLE, OR IN SUPPORT OF HUMAN RIGHTS ABUSES.

IN THE EVENT OF ANY CONFLICTS BETWEEN THIS MANUAL AND THE APPLICABLE LAW, THE LATTER PREVAILS.



This product and – if applicable – the supplied accessories too are marked with “CE” and comply therefore with the applicable harmonized European standards listed under the RE Directive 2014/53/EU, the EMC Directive 2014/30/EU, the RoHS Directive 2011/65/EU.




■ 2012/19/EU (WEEE directive): Products marked with this symbol cannot be disposed of as unsorted municipal waste in the European Union. For proper recycling, return this product to your local supplier upon the purchase of equivalent new equipment, or dispose of it at designated collection points. For more information see: www.recyclethis.info



■ 2006/66/EC (battery directive): This product contains a battery that cannot be disposed of as unsorted municipal waste in the European Union. See the product documentation for specific battery information. The battery is marked with this symbol, which may include leering to indicate cadmium (Cd), lead (Pb), or mercury (Hg). For proper recycling, return the battery to your supplier or to a designated collection point. For more information see: www.recyclethis.info

BATTERY CAUTION

 Replacement of a battery with an incorrect type that can defeat a safeguard (for example, in the case of some lithium battery types);

– disposal of a battery into fire or a hot oven, or mechanically crushing or cutting of a battery, that can result in an explosion;

– leaving a battery in an extremely high temperature surrounding environment that can result in an explosion or the leakage of flammable liquid or gas; and

– a battery subjected to the extremely low air pressure that may result in an explosion or the leakage of flammable liquid or gas

Chemical burning danger

Do not swallow the battery.

Keep new and used batteries away from the children.

If you think batteries might have been swallowed or placed inside any part of the body, seek immediate medical attention.


Risk of explosion if the battery is replaced by an incorrect type.

Replacement of a battery with an incorrect type can defeat a safeguard.

Dispose of used batteries according to the instructions and local regulations.

If the battery compartment does not close securely, stop using the product and keep it away from children.

INSTALLATION CAUTION

 The additional force shall be equal to three times the weight of the equipment but not less than 50N. The equipment and its associated mounting means shall remain secure during the installation. After the installation, the equipment, including any associated mounting plate, shall not be damaged.



FCC Information


Please take attention that changes or modifications not expressly approved by the party responsible for compliance could void the user's authority to operate the equipment.

This device complies with Part 15 of the FCC Rules. Operation is subject to the following two conditions:

1. This device may not cause harmful interference, and
2. This device must accept any interference received, including interference that may cause undesired operation.

This equipment complies with FCC radiation exposure limits set forth for an uncontrolled environment. This equipment should be installed and operated with a minimum distance of 20cm between the radiator & your body.

Documents / Resources

	HIKVISION DS-PDD12P-EG2-WA Wireless Dual-Tech Detector [pdf] User Manual D0212023, 2ADTD-D0212023, 2ADTDD0212023, DS-PDD12P-EG2-WA, Wireless Dual-Tech Detector
---	--