



HIKVISION DS-KV6113-WPE1 Video Intercom Villa Door Station User Guide

[Home](#) » [Hikvision](#) » HIKVISION DS-KV6113-WPE1 Video Intercom Villa Door Station User Guide 

Contents

- [1 HIKVISION DS-KV6113-WPE1 Video Intercom Villa Door Station](#)
- [2 DS-KV61X3-\(W\)PE1\(C\) Video Intercom Villa Door Station](#)
- [3 Product Usage Instructions](#)
- [4 Product Configuration via Web](#)
- [5 Access to the Device by Web Browsers](#)
- [6 Communicate with Indoor Station](#)
- [7 Appearance](#)
- [8 Terminal and Wiring](#)
- [9 Installation Accessory](#)
- [10 Installation](#)
- [11 Configuration via Web](#)
- [12 Documents / Resources](#)
 - [12.1 References](#)
- [13 Related Posts](#)



HIKVISION DS-KV6113-WPE1 Video Intercom Villa Door Station



DS-KV61X3-(W)PE1(C) Video Intercom Villa Door Station

The DS-KV61X3-(W)PE1(C) is a video intercom villa door station that allows communication with indoor stations and access control through card reading. It has a microphone, camera, loudspeaker, card reading area, terminals, debugging port, tamper, set screw, TF card slot, and network interface. The device supports surface mounting and comes with installation accessories such as a mounting template, mounting plate, and 485 RS-485 interface. The default parameters of the door station are IP address 192.0.0.65, port number 8000, and username admin.

Product Usage Instructions

Surface Mounting without Protective Shield

1. Stick the mounting template on the wall and drill screw holes according to the template.
2. Secure the mounting plate on the wall with 4 supplied screws according to the screw holes.
3. Install the villa door station to the mounting plate and fix it with the set screw. Apply silicone sealant among the cable wiring area to prevent rainwater from entering.

Surface Mounting with Protective Shield

Purchase the protective shield before installation.

Product Configuration via Web

Activate Device via Web

1. Power on the device and connect it to the network.

2. Enter the IP address into the web browser's address bar and click Enter to enter the activation page.
3. Create and enter a strong password into the password field.
4. Confirm the password and click OK to activate the device.

Note: When the device is not activated, basic operation and remote configuration cannot be performed.

Access to the Device by Web Browsers

1. Enter the IP address of the device in the browser address bar and press Enter to enter the login page.
2. Enter the username and password and click Login.

Communicate with Indoor Station

1. Click Settings → Intercom → Press the Button to Call to enter the settings page.
2. Edit the call number for every button and check Call Management Center to set the button calling center.
3. Press the button to call the indoor station.

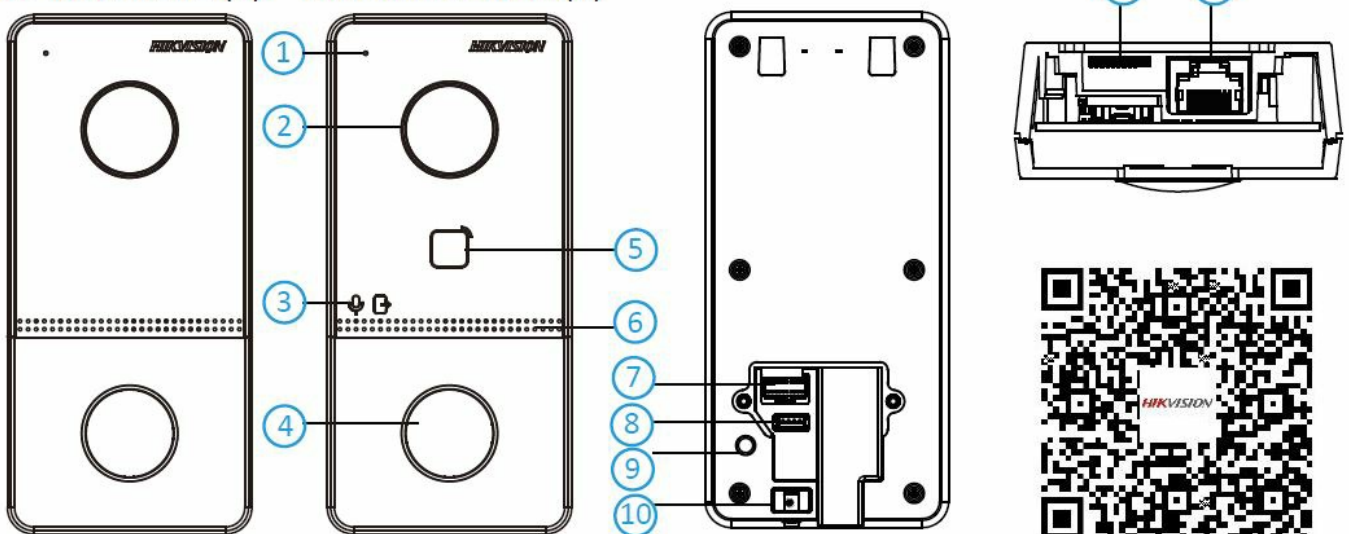
Issue Card

1. Click Settings → Access Control and Elevator Control to enter the settings page.
2. Click Issue Card and present the card on the card reading area.
3. When issuing is finished, a window will appear on the settings page.

Note: Only M1 card is supported, and the Mifare card with a non-standard shape is recommended. Up to 10000 cards can be issued and managed by V series door station. A voice prompt will alert when there are no more cards.

Appearance

DS-KV6103-PE1(C) DS-KV6113-WPE1(C)



1. Microphone
2. Camera

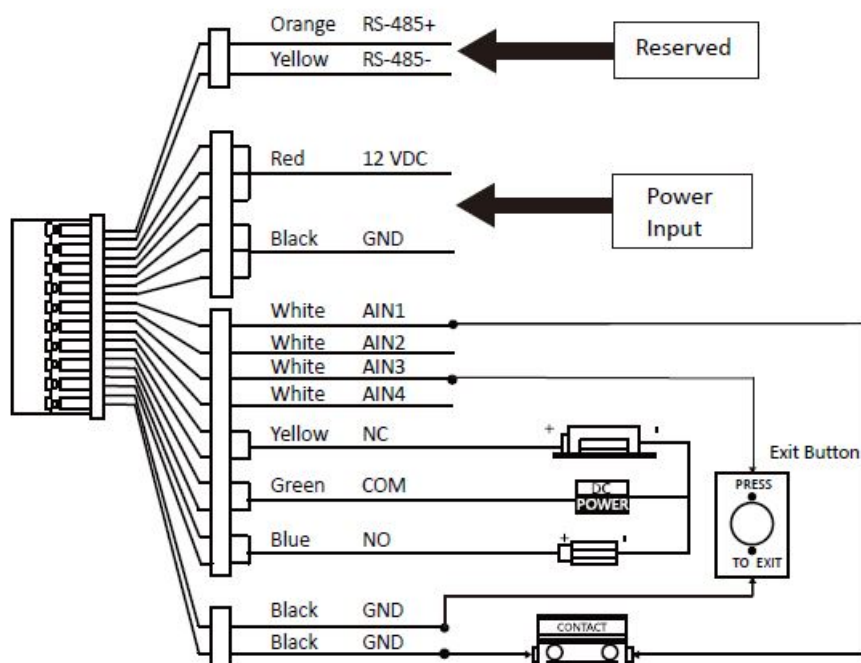
3. Indicator
4. Button
5. Card Reading Area
6. Loudspeaker Terminals
7. Debugging Port
8. TAMPER
9. Set Screw
10. TF Card Slot (2) Network Interface

Note: The debugging port is used for debugging only.

Indicator Description

- Unlock: Green
- Call: Orange
- Communicate: White

Terminal and Wiring

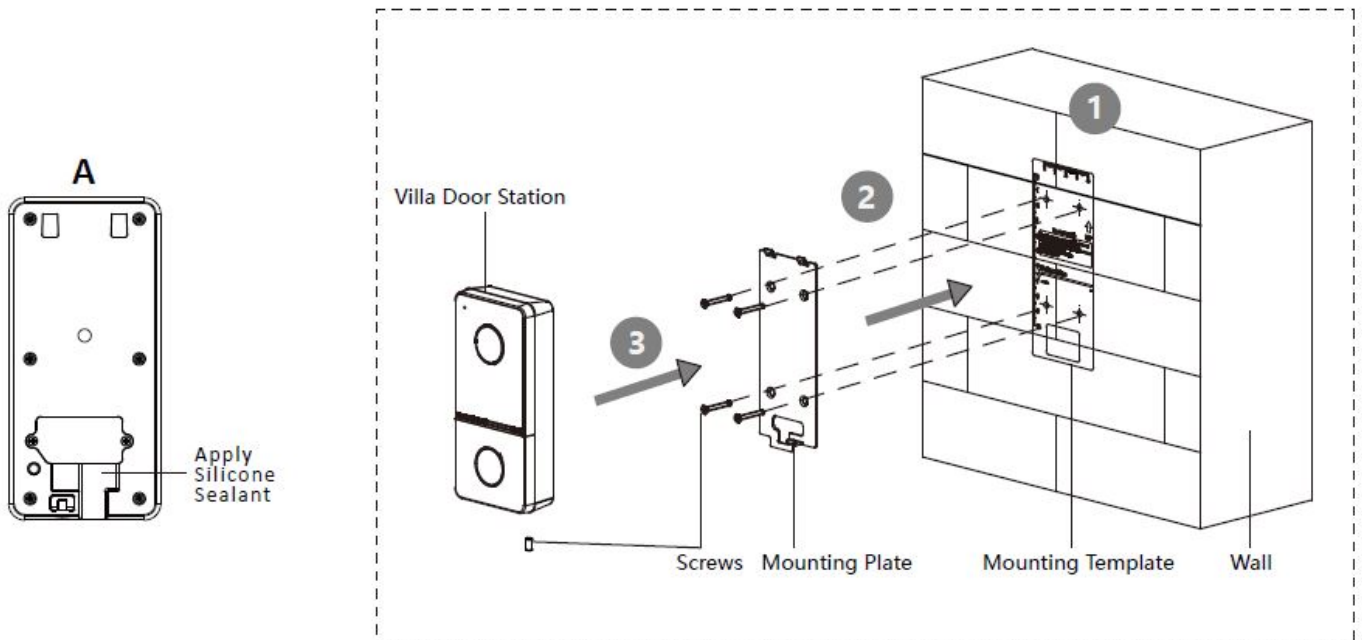


- NC: Door Lock Relay Output (NC)
- NO: Door Lock Relay Output (NO)
- COM: Common Interface
- AIN1: For the access of Door Contact
- 485-: RS-485 Interface (Reserved)
- 485+: RS-485 Interface (Reserved)
- 12 VDC IN: Power Supply Input
- GND: Grounding
- AIN3: For the access of Exit Button

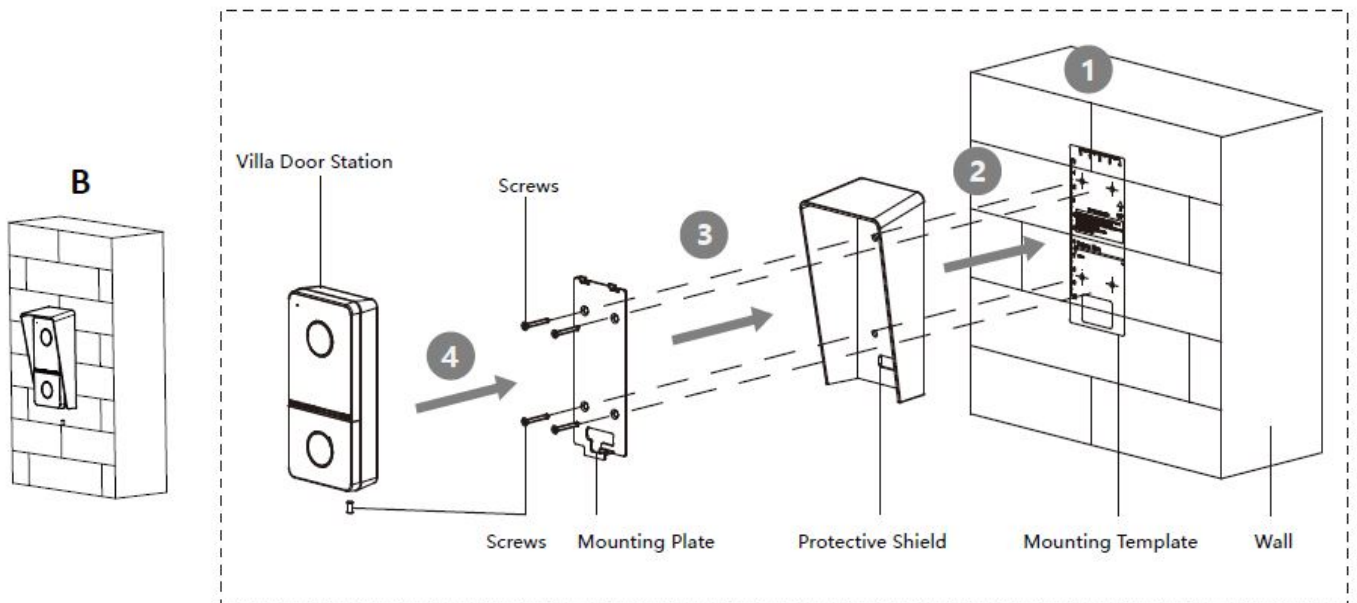
- AIN2&AIN4: Reserved

Installation Accessory

★ Surface Mounting without Protective Shield



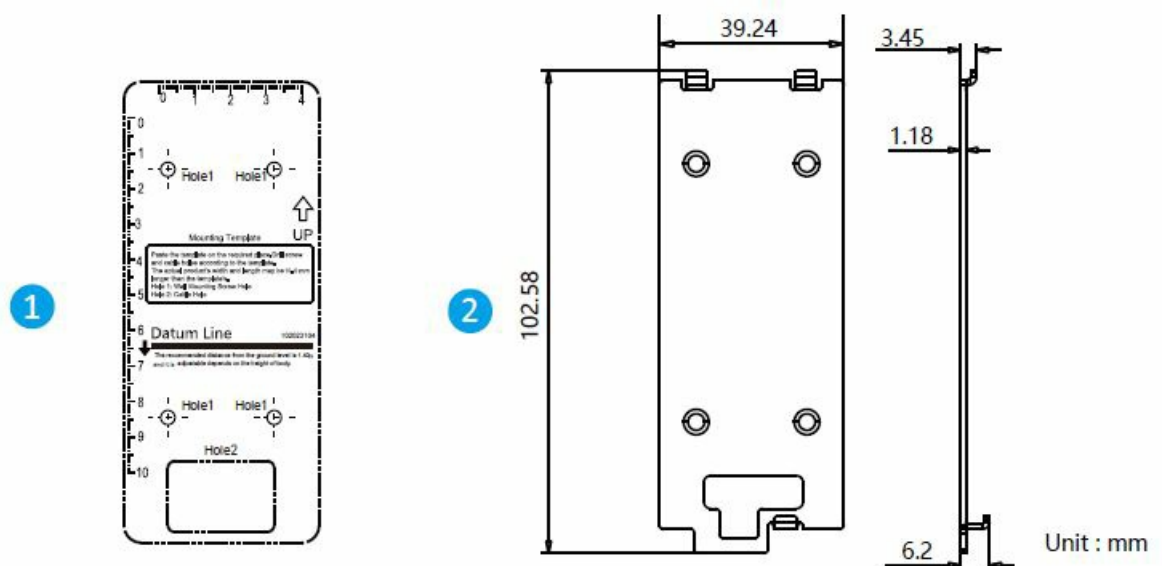
★ Surface Mounting with Protective Shield



1. Mounting Template
2. Mounting Plate

Note: The dimension of the mounting plate is 102.58 mm x 39.24 mm x 6.2 mm.

Installation



Note: Video intercom villa door station supports surface mounting.

Before You Start

- Make sure all related equipments are power-off during the installation.
- Tools that you need to prepare for installation: Drill (\$2.846) and gradienter.
- Purchase the protective shield before installation.

Surface Mounting without Protective Shield

1. Stick the mounting template on the wall. Drill screw holes according to the mounting template. Remove the template from the wall.
2. Secure the mounting plate on the wall with 4 supplied screws according to the screw holes.
3. Install the villa door station to the mounting plate. Fix the device on the mounting plate with the set screw.

Note: Apply silicone sealant among the cable wiring area to keep the raindrop from entering. Please refer to figure A.

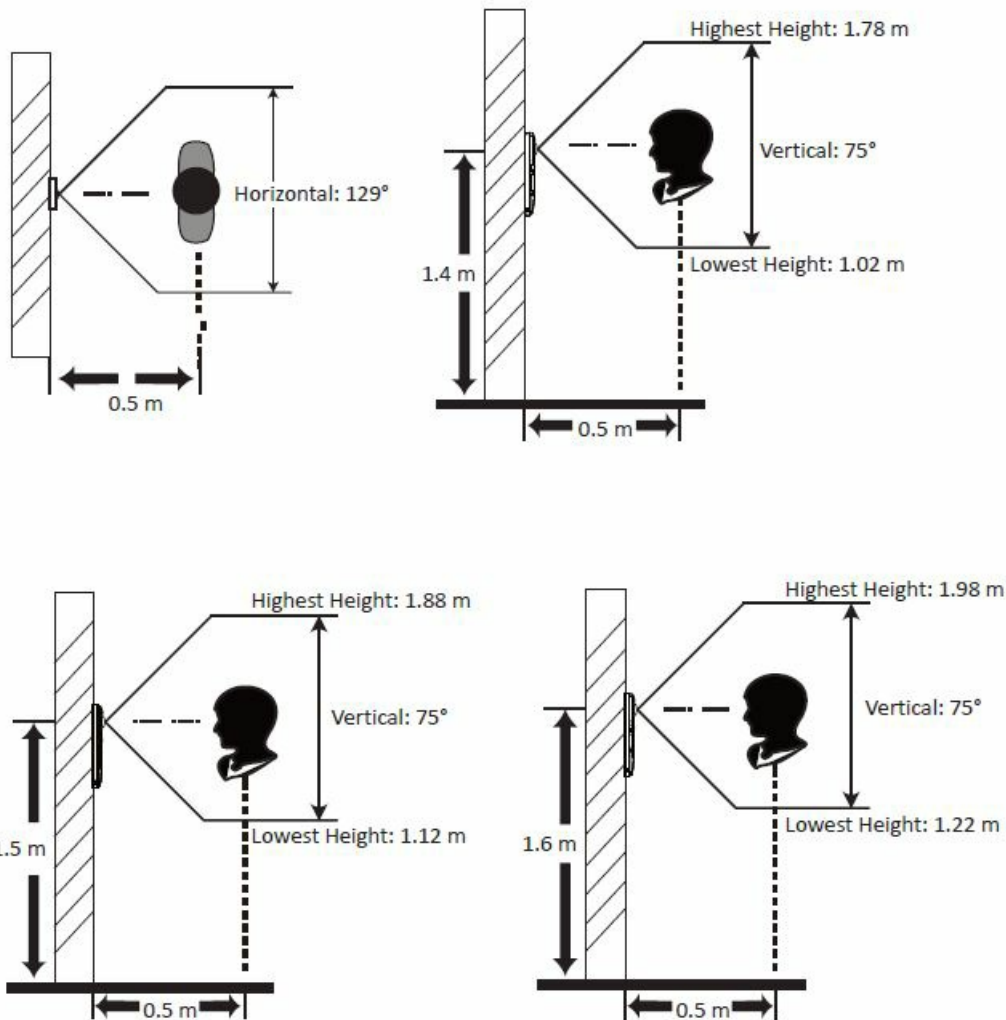
Surface Mounting with Protective Shield

1. Stick the mounting template on the wall. Drill the screw holes according to the mounting template. Remove the template from the wall.
2. Align the protective shield with the mounting template.
3. Secure the mounting plate and protective shield on the wall with 4 supplied screws according to the screw holes.
4. Install the villa door station to the mounting plate. Fix the device on the mounting plate with the set screw.

Note: If installing outdoors, you are advised to install the device with protective shield. For the finished view, please refer to figure B.

Configuration via Web

Recommended Installation Height (The distance between the camera and the ground): 1.4 m to 1.6 m.



Activate Device via Web

You are required to activate the device first by settings a strong password before you can use the device.

Default parameters of door station are as follows:

- Default IP Address: 192.0.0.65.
- Default Port No.:8000.
- Default User Name: admin

1. Power on the device, and connect the device to the network.
2. Enter the IP address into the web browser's address bar, and click Enter to enter the activation page.

Note: The computer and the device should belongs to the same subnet.

3. Create and enter a password into the password field
4. Confirm the password.
5. Click OK to activate the device.

Note: When the device is not activated, the basic operation and remote configuration of device cannot be performed.

Access to the Device by Web Browsers

1. In the browser address bar, enter the IP address of the device, and press the Enter key to enter the login page.
2. Enter the user name and password and click Login.

Communicate with Indoor Station

1. Click Settings -> Intercom -> Press Button to Call to enter the settings page.
2. Set the parameters.
 - Edit call No. for every button.
 - Check Call Management Center to set the button calling center.

Note: If you check Call Management Center and set the call No. as well, call management center has higher privilege than call No.

3. Press the button to call the indoor station.

Issue Card

1. Click Settings -> Access Control and Elevator Control to enter the settings page.
2. Click Issue Card. Present the card on the card reading area.
3. When issuing is finished, the windows pop up on the settings page.

Note:

- Only M1 card is supported, and a Mifare card with a non-standard shape is recommended.
- Up to 10000 cards can be issued and managed by the V series door station. A voice prompt (No more cards can be issued.) can be heard when the issued card amount exceeds the upper limit.

Unlock Door

After issuing cards, you can unlock the door by presenting the issued cards. Refers to Video Intercom Villa Door Station User Manual (scan the QR code) for details.

@2020 Hangzhou Hikvision Digital Technology Co., Ltd. All rights reserved.

About this Manual

The Manual includes instructions for using and managing the Product. Pictures, charts, images and all other information hereinafter are for description and explanation only. The information contained in the Manual is subject to change, without notice, due to firmware updates or other reasons. Please find the latest version of this Manual at the Hikvision website (<https://www.hikvision.com/>). Please use this Manual with the guidance and assistance of professionals trained in supporting the Product. HIKVIS/ON and other Hikvision's trademarks and logos are the properties of Hikvision in various jurisdictions. Other trademarks and logos mentioned are the properties of their respective owners.

Disclaimer

TO THE MAXIMUM EXTENT PERMITTED BY APPLICABLE LAW, THIS MANUAL AND THE PRODUCT DESCRIBED, WITH ITS HARDWARE, SOFTWARE AND FIRMWARE, ARE PROVIDED "AS IS AND "WITH ALL FAULTS AND ERRORS. HIKVISION MAKES NO WARRANTIES, EXPRESS OR IMPLIED, INCLUDING WITHOUT LIMITATION, MERCHANTABILITY, SATISFACTORY QUALITY, OR FITNESS FOR A PARTICULAR PURPOSE. THE USE OF THE PRODUCT BY YOU IS AT YOUR OWN RISK. IN NO EVENT WILL HIKVISION BE LIABLE TO YOU FOR ANY SPECIAL, CONSEQUENTIAL, INCIDENTAL, OR INDIRECT DAMAGES, INCLUDING, AMONG OTHERS, DAMAGES FOR LOSS OF BUSINESS PROFITS, BUSINESS INTERRUPTION, OR LOSS OF

DATA, CORRUPTION OF SYSTEMS, OR LOSS OF DOCUMENTATION, WHETHER BASED ON BREACH OF CONTRACT, TORT (INCLUDING NEGLIGENCE), PRODUCT LIABILITY, OR OTHERWISE, IN CONNECTION WITH THE USE OF THE

PRODUCT, EVEN IF HIKVISION HAS BEEN ADVISED OF THE POSSIBILITY OF SUCH DAMAGES OR LOSS. YOU ACKNOWLEDGE THAT THE NATURE OF THE INTERNET PROVIDES FOR INHERENT SECURITY RISKS, AND HIKVISION SHALL NOT TAKE ANY RESPONSIBILITY FOR ABNORMAL OPERATION, PRIVACY LEAKAGE OR OTHER DAMAGES RESULTING FROM CYBER-ATTACKS, HACKER ATTACKS, VIRUS INFECTIONS, OR OTHER INTERNET SECURITY RISKS; HOWEVER, HIKVISION WILL PROVIDE TIMELY TECHNICAL SUPPORT IF REQUIRED. YOU AGREE TO USE THIS PRODUCT IN COMPLIANCE WITH ALL APPLICABLE LAWS, AND YOU ARE SOLELY RESPONSIBLE FOR ENSURING THAT YOUR USE CONFORMS TO THE APPLICABLE LAW. ESPECIALLY, YOU ARE RESPONSIBLE, FOR USING THIS PRODUCT IN A MANNER THAT DOES NOT INFRINGE ON THE RIGHTS OF THIRD PARTIES, INCLUDING WITHOUT LIMITATION, RIGHTS OF PUBLICITY, INTELLECTUAL PROPERTY RIGHTS, OR DATA PROTECTION AND OTHER PRIVACY RIGHTS. YOU SHALL NOT USE THIS PRODUCT FOR ANY PROHIBITED END-USES, INCLUDING THE DEVELOPMENT OR PRODUCTION OF WEAPONS OF MASS DESTRUCTION, THE DEVELOPMENT OR PRODUCTION OF CHEMICAL OR BIOLOGICAL WEAPONS, ANY ACTIVITIES IN THE CONTEXT RELATED TO ANY NUCLEAR EXPLOSIVE OR UNSAFE NUCLEAR FUEL CYCLE, OR IN SUPPORT OF HUMAN RIGHTS ABUSES IN THE VENT OF ANY CONFLICTS BETWEEN THIS MANIAI AND THE APPLICATION AW THE I ATER PREVAIIS.

This product and – if applicable – the supplied accessories too are marked with “C” and comply therefore with the applicable harmonized European standards listed under the RE Directive 2014/53/EU, the EMC Directive 2014/30/EU, the RoHS Directive 2011/65/EU 2012/19/EU (WEEE directive): Products marked with this symbol cannot be disposed of as unsorted municipal waste in the European Union. For proper recycling, return this product to your local supplier upon the purchase of equivalent new equipment, or dispose of it at designated collection points. For more information see: www.recyclethis.info 2006/66/EC (battery directive): This product contains a battery that cannot be disposed of as unsorted municipal waste in the European Union. See the product documentation for specific battery information. The battery is marked with this symbol, which may include lettering to indicate cadmium (Cd), lead (Pb), or mercury (Hg). For proper recycling, return the battery to your supplier or to a designated collection point. For more information see: www.recyclethis.info

WARNING

- All the electronic operation should be strictly compliance with the electrical safety regulations, fire prevention regulations and other related regulations in your local region.
- Do not connect several devices to one power adapter as adapter overload may cause over-heat or fire hazard. Please make sure that the power has been disconnected before you wire, install or dismantle the device.
- When the product is installed on wall or ceiling, the device shall be firmly fixed.
- If smoke, odors or noise rise from the device, turn off the power at once and unplug the power cable, and then please contact the service center.
- If the product does not work properly, please contact your dealer or the nearest service center. Never attempt to disassemble the device yourself. (We shall not assume any responsibility for problems caused by unauthorized repair or maintenance.)

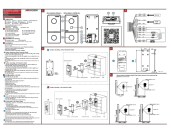
CAUTION

- Do not drop the device or subject it to physical shock, and do not expose it to high electromagnetism radiation. Avoid the equipment installation on vibrations surface or places subject to shock ignorance can cause equipment damage).
- Do not place the device in extremely hot (refer to the specification of the device for the detailed operating

temperature), cold, dusty or damp locations, and do not expose it to high electromagnetic radiation.

- The device cover for indoor use shall be kept from rain and moisture.
- Exposing the equipment to direct low ventilation or a heat source such as a heater or radiator is forbidden (ignorance can cause fire danger).
- Do not aim the device at the sun or extra bright places. A blooming or smear may occur otherwise (which is not a malfunction, however), affecting the endurance of sensor at the same time.
- Please use a soft and dry cloth when cleaning the inside and outside surfaces of the device cover, do not use alkaline detergents. Please keep all wrappers after unpack them for future use. In case of any failure occurred, you need to return the device to the factory with the original wrapper. Transportation without the original wrapper may result in damage on the device and lead to additional costs.

Documents / Resources

	HIKVISION DS-KV6113-WPE1 Video Intercom Villa Door Station [pdf] User Guide DS-KV6113-WPE1, DS-KV61X3- W PE1, DS-KV6113-WPE1 Video Intercom Villa Door Station, Video Intercom Villa Door Station, Intercom Villa Door Station, Villa Door Station, Door Station
---	--

References

- [🌐 Hikvision US | The world's largest video surveillance manufacturer |](#)
- [🌐 HOME](#)
- [🌐 Hikvision US | The world's largest video surveillance manufacturer |](#)