



HIKVISION DS-KH9510-WTE1 Android Indoor Station Installation Guide

[Home](#) » [Hikvision](#) » HIKVISION DS-KH9510-WTE1 Android Indoor Station Installation Guide 



**DS-KH9510-WTE1
Android Indoor Station
UD19191B**

Contents

- [1 Diagram References](#)
 - [1.1 Appearance](#)
- [2 Terminal](#)
- [3 Installation](#)
 - [3.1 Mounting Accessories](#)
 - [3.2 Wall Mounting with Gang Box](#)
- [4 Getting Started](#)
 - [4.1 Activate Indoor Station](#)
 - [4.2 Quick Configuration](#)
 - [4.3 Disclaimer](#)
- [5 BATTERY CAUTIONS](#)
- [6 INSTALLATION CAUTION](#)
- [7 Documents / Resources](#)
 - [7.1 References](#)
- [8 Related Posts](#)

Diagram References

Appearance

1. Screen
2. Microphone

3. Unlock Button
4. Power Supply Interface
5. Alarm Terminals
6. RS-485/Relay Interface
7. Debugging Port & MicroUSB Interface
8. Loudspeaker
9. Reserved
10. TAMPER
11. Network Interface

Note: The appearance of the device varies by model. Refers to the actual device for detailed information.

Terminal

AIN1: Alarm Input 1 AIN2: Alarm Input 2 AIN3: Alarm Input 3 AIN4: Alarm Input 4 NO1/NO2: Normally Open COM1/COM2: Common Interface RS485-/RS485+: RS-485 Communication Interface	AIN5: Alarm Input 5 AIN6: Alarm Input 6 AIN7: Alarm Input 7 AIN8: Alarm Input 8 GND: Grounding
--	--

Note: For the wiring description, refer to the user manual.

Installation

Mounting Accessories

The wall mounting plate and the gang box are required to install the indoor station onto the wall. There are two sizes of gang boxes adapted to the device.
 Size 1: 75 mm (width) × 75 mm (length) × 46 mm (depth)
 Size 2: 55 mm (width) × 101 mm (length) × 38.5 mm (depth)

Before you begin:

- Make sure the device in the package is in good condition and all the assembly parts are included.
- The indoor station power supply is 12 VDC. Ensure your power supply matches your indoor station.
- Make sure all related equipment is powered-off during the installation.
- Check the product specification for the installation environment.

Wall Mounting with Gang Box

1. Cave a hole in the wall.

Note: The suggested dimension of the installation hole should be larger than the gang box.

2. Insert a gang box to the hole chiseled on the wall.
3. Fix the wall mounting plate to the gang box with two screws.

Notes

If you install the device with a gang box (75 mm (width) × 75 mm (length) × 46 mm (depth)), the upper and lower holes will apply.

If you install the device with a gang box (55 mm (width) × 101 mm (length) × 38.5 mm (depth)), the upper and lower holes will apply.

4. Hook the indoor station to the wall mounting plate tightly by inserting the plate hooks into the slots of the rear panel of the indoor station, during which the lock catch will lock automatically.

Getting Started

Activate Indoor Station

You are required to activate the device first by setting a strong password before you can use the device.

1. Power on the device. It will enter the activation page automatically.
2. Create a password and confirm it.
3. Tap OK to activate the indoor station.

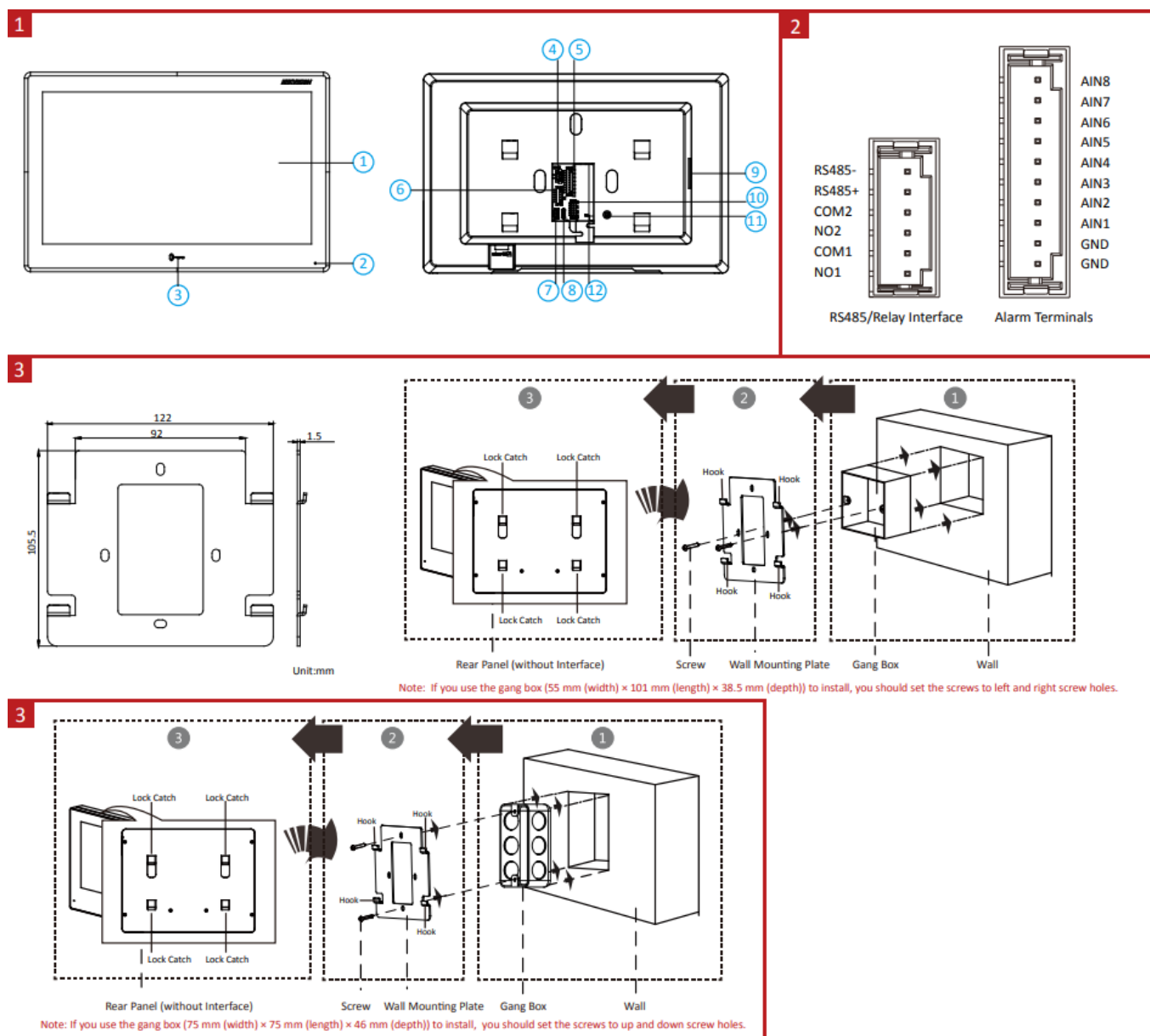
Quick Configuration

1. Choose Language and tap Next.
2. Set network parameters and tap Next.
 - Edit Local IP, Subnet Mask, and Gateway parameters.
 - Enable DHCP, the device will get network parameters automatically.
3. Configure the indoor station and tap Next.
 - a. Select Indoor Station Type.
 - b. Edit Floor and Room No.
4. Linked related devices and tap Next. If the device and the indoor station are in the same LAN, the device will be displayed in the list. Tap the device or enter the serial no. to link.
 - a. Tap the door station in the list to link.
 - b. Tap the settings icon to pop up the Network Settings page.
 - c. Edit the network parameters of the door station manually or enable DHCP to get the network parameters automatically.
 - d. Optional: Enable Synchronize Language to synchronize the language of the door station with the indoor station.
 - e. Tap OK to save the settings.
5. Tap Finish to save the settings.

The power supply must conform to LPS. The recommended adapter models and manufacturers are shown as below. Use the attached adapter, and do not change the adapter randomly.

Model	Current	Manufacturer	Standard
MSA-C1500IC12.0 -18P -US	1.5 A	MOSO POWER SUPPLY TECHNOLOGY CO., LTD	PG
TS-A018-120015AD	1.5 A	SHENZHEN TRANSIN TECHNOLOGIES CO., LTD	PG

- Refer to Video Intercom Network Indoor Station Configuration Guide (scan the QR code) for details.
- Refer to Video Intercom Network Indoor Station Operation Guide (scan the QR code) for details.





<http://enpinfodata.hikvision.com/analysisQR/showQR/3d6cebed>
Scan the QR code to get the configuration guide for detailed information.

<http://enpinfodata.hikvision.com/analysisQR/showQR/3d6cebed>
Scan the QR code to get the configuration guide for detailed information.

©2021 Hangzhou Hikvision Digital Technology Co., Ltd. All rights reserved. About this Manual, The Manual includes instructions for using and managing the Product. Pictures, charts, images and all other information hereinafter are for description and explanation only. The information contained in the Manual is subject to change, without notice, due to firmware updates or other reasons. Please find the latest version of this Manual at the Hikvision Website (<https://www.hikvision.com/>). Please use this Manual with the guidance and assistance of professionals trained in supporting the Product. and other Hikvision trademarks and logos are the properties of Hikvision in various jurisdictions. Other trademarks and logos mentioned are the properties of their respective owners.

Disclaimer

TO THE MAXIMUM EXTENT PERMITTED BY APPLICABLE LAW, THIS MANUAL AND THE PRODUCT DESCRIBED, WITH ITS HARDWARE, SOFTWARE, AND FIRMWARE, ARE PROVIDED “AS IS” AND “WITH ALL FAULTS AND ERRORS.” HIKVISION MAKES NO WARRANTIES, EXPRESS OR IMPLIED, INCLUDING WITHOUT LIMITATION, MERCHANTABILITY, SATISFACTORY QUALITY, OR FITNESS FOR A PARTICULAR PURPOSE. THE USE OF THE PRODUCT BY YOU IS AT YOUR OWN RISK. IN NO EVENT WILL HIKVISION BE LIABLE TO YOU FOR ANY SPECIAL, CONSEQUENTIAL, INCIDENTAL, OR INDIRECT DAMAGES, INCLUDING, AMONG OTHERS, DAMAGES FOR LOSS OF BUSINESS PROFITS, BUSINESS INTERRUPTION, OR LOSS OF DATA, CORRUPTION OF SYSTEMS, OR LOSS OF DOCUMENTATION, WHETHER BASED ON BREACH OF CONTRACT, TORT (INCLUDING NEGLIGENCE), PRODUCT LIABILITY, OR OTHERWISE, IN CONNECTION WITH THE USE OF THE PRODUCT, EVEN IF HIKVISION HAS BEEN ADVISED OF THE POSSIBILITY OF SUCH DAMAGES OR LOSS.

YOU ACKNOWLEDGE THAT THE NATURE OF THE INTERNET PROVIDES FOR INHERENT SECURITY RISKS, AND HIKVISION SHALL NOT TAKE ANY RESPONSIBILITIES FOR ABNORMAL OPERATION, PRIVACY LEAKAGE, OR OTHER DAMAGES RESULTING FROM CYBER-ATTACK, HACKER ATTACK, VIRUS INSPECTION, OR OTHER INTERNET SECURITY RISKS; HOWEVER, HIKVISION WILL PROVIDE TIMELY TECHNICAL SUPPORT IF REQUIRED. YOU AGREE TO USE THIS PRODUCT IN COMPLIANCE WITH ALL APPLICABLE LAWS, AND YOU ARE SOLELY RESPONSIBLE FOR ENSURING THAT YOUR USE CONFORMS TO THE APPLICABLE LAW. ESPECIALLY, YOU ARE RESPONSIBLE, FOR USING THIS PRODUCT IN A MANNER THAT DOES NOT INFRINGE ON THE RIGHTS OF THIRD PARTIES, INCLUDING WITHOUT LIMITATION, RIGHTS OF PUBLICITY, INTELLECTUAL PROPERTY RIGHTS, OR DATA PROTECTION, AND OTHER PRIVACY RIGHTS. YOU SHALL NOT USE THIS PRODUCT FOR ANY PROHIBITED END-USES, INCLUDING THE DEVELOPMENT OR PRODUCTION OF WEAPONS OF MASS DESTRUCTION, THE DEVELOPMENT OR PRODUCTION OF CHEMICAL OR BIOLOGICAL WEAPONS, ANY ACTIVITIES IN THE CONTEXT RELATED TO ANY NUCLEAR EXPLOSIVE OR UNSAFE NUCLEAR FUEL-CYCLE, OR IN SUPPORT OF HUMAN RIGHTS ABUSES. IN THE EVENT OF ANY CONFLICTS BETWEEN THIS MANUAL AND THE APPLICABLE LAW, THE LATTER PREVAILS.



This product and, if applicable, the supplied accessories too are marked with “CE” and comply therefore with the applicable harmonized European standards listed under the RE Directive 2014/53/EU, the EMC Directive 2014/30/EU, the RoHS Directive 2011/65/EU.



2012/19/EU (WEEE Directive): Products marked with this symbol cannot be disposed of as unsorted municipal waste in the European Union. For proper recycling, return this product to your local supplier upon the purchase of equivalent new equipment, or dispose of it at designated collection points. For more information see: www.recyclethis.info



2006/66/EC (Battery Directive): This product contains a battery that cannot be disposed of as unsorted municipal waste in the European Union. See the product documentation for specific battery information. The battery is marked with this symbol, which may include lettering to indicate cadmium (Cd), lead (Pb), or mercury (Hg). For proper recycling, return the battery to your supplier or to a designated collection point. For more information see: www.recyclethis.info

BATTERY CAUTIONS



Replacement of a battery with an incorrect type can defeat a safeguard (for example, in the case of some lithium battery types);

– disposal of a battery into fire or a hot oven, or mechanically crushing or cutting of a battery, that can result in an explosion;

– leaving a battery in an extremely high temperature surrounding environment that can result in an explosion or the leakage of flammable liquid or gas; and

– a battery subjected to extremely low air pressure may result in an explosion or the leakage of flammable liquid or gas

Chemical burning danger

Do not swallow the battery.

Keep new and used batteries away from children.

If you think batteries might have been swallowed or placed inside any part of the body, seek immediate medical attention.

Risk of explosion if the battery is replaced by an incorrect type.

Replacement of a battery with an incorrect type can defeat a safeguard.

Dispose of used batteries according to the instructions and local regulations.

If the battery compartment does not close securely, stop using the product and keep it away from children.

INSTALLATION CAUTION

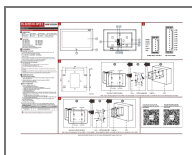


The additional force shall be equal to three times the weight of the equipment but not less than 50N.

The equipment and its associated mounting means shall remain secure during the installation. After the installation, the equipment, including any associated mounting plate, shall not be damaged.

**Hangzhou Hikvision Digital Technology CO.,Ltd. No.555 Qianmo Road, Binjiang District, Hangzhou
310052, China**

Documents / Resources



[HIKVISION DS-KH9510-WTE1 Android Indoor Station](#) [pdf] Installation Guide
DS-KH9510-WTE1, Android Indoor Station

References

- [HOME](#)
- [Hikvision US | The world's largest video surveillance manufacturer |](#)

