



HIKVISION D1 Dashcam User Manual

[Home](#) » [Hikvision](#) » HIKVISION D1 Dashcam User Manual 

Contents

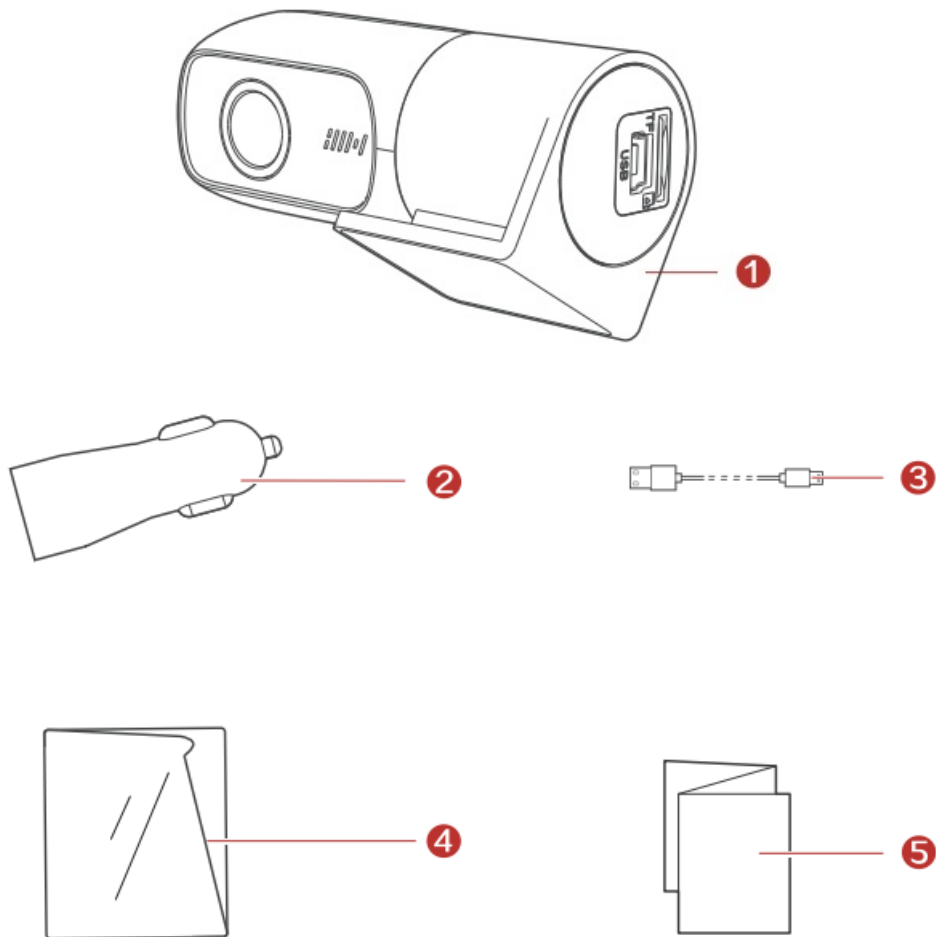
- [1 HIKVISION D1 Dashcam](#)
- [2 Packing List](#)
- [3 Parts Introduction](#)
- [4 Installation](#)
- [5 Mobile Phone Connection](#)
- [6 Basic Description](#)
- [7 Specifications](#)
- [8 Safety Instruction](#)
- [9 Troubleshooting](#)
- [10 Legal Statement](#)
- [11 Regulatory Information](#)
- [12 Documents / Resources](#)
 - [12.1 References](#)
- [13 Related Posts](#)

HIKVISION

HIKVISION D1 Dashcam

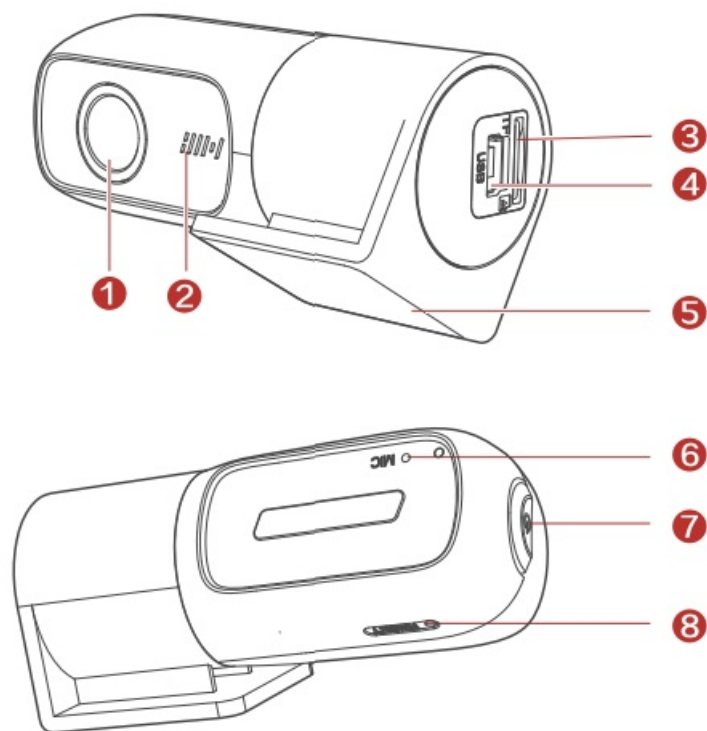


Packing List



1. Dashcam× 1
2. Car Charger × 1
3. Power Cord× 1
4. Electrostatic Film× 1
5. User Manual × 1

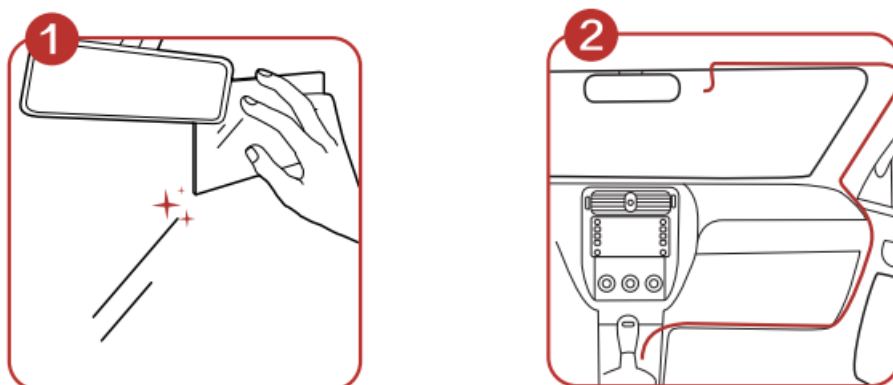
Parts Introduction



1. Lens
2. Loudspeaker
3. TF Card Slot
4. USB Interface
5. 3M Tape
6. Microphone
7. Power Button
8. Reset Button

Hold the power button to restore the device to factory settings. Press the power button to switch between AR mode and Wi-Fi mode.

Installation

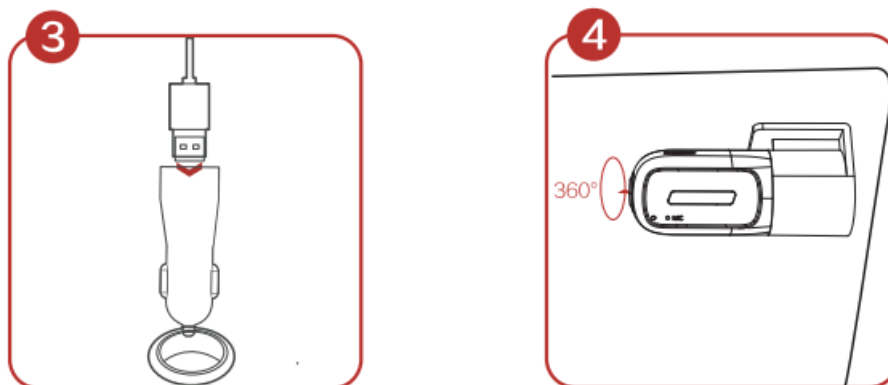


1. Clean the windshield and paste the electrostatic film onto it. Avoid introducing air bubbles. DO NOT paste the film repeatedly

Suggested Position:

The center of image as close as possible to the center line of the front

2. Paste the device onto the electrostatic film and route cable to the disater box for power supply. The device interfaces should be installed to the rightfor easier power cord Connection.



3. Plug the car charger into the cigarette lighter, and plug the power cord into the USB interface.
4. Adjust the angle to the target direction.

Mobile Phone Connection



Dashcam Wi-Fi default parameters:

- **Wi-Fi SSID:** HIKVISION-D1-XXXX (XXXX refers to the last four characters of the verification code.)
- **Wi-Fi password:** 1234567890 (To edit password, please go to the Settings page.)

1. Scan the QR code to download and install the HikDashcam app.
2. Add the dashcam to the app.
 - Run the HikDashcam app.
 - Tap Wi-Fi Connection.
 - In the Wi-Fi list, select the Wi-Fi SSID of the target dashcam and enter the Wi-Fi password to build a connection.

NOTE

- You can set the parameters of the dashcam.
- For iOS, you need to go to Wi-Fi settings of your phone to connect to the Wi-Fi of dashcam.
- If Wi-Fi cannot be searched, please press power button to switch to Wi-Fi mode.

Basic Description

Start-Up & Shutdown

Connect the power cord to the car battery. Device starts recording automatically once the car starts. Device powers off when the car stalls.

Recording

Recordings are divided to ordinary video and emergency video. You can set the video voice on/off via System Settings or Hikdashcam APP.

Specifications

Model	AE-DC2018-D1
Aperture	F2.0
Pixel	200 W
Max. Resolution	1080P @ 30fps
Angle	Horizontal: 102°, Diagonal: 56°
Storage	TF card, 16 GB to 128 GB
G-Sensor	Built-in, collision triggered recording and recording lock
Wi-Fi	Yes
Sound Recording	Yes
Power Supply	5 VDC, 1.5 A
Power Consumption	Approx. 3.5 W
Operating Temperature and Humidity	-20 °C to 70 °C (-4° F to 158° F). Humidity 95% or less.
Installation Type	General
Dimensions (L× W × H)	77 × 32 × 35 mm (3.03" × 1.26" × 1.38")
Weight	Approx. 100 g (0.22 lb.)

Cautions

Safety Instruction

These instructions are intended to ensure that users can use the product correctly to avoid danger or property loss.

Cautions: Injury or equipment damage may occur if any of the cautions are neglected.

- In the use of the dashcam, you must be in strict compliance with the local laws and regulations.
- You are recommended to install the dashcam on the location of rear mirror to ensure the dashcam can record with the best surveillance view. DO NOT install the dashcam on the location that will block the driver's sight.
- Keep the user manual properly for future reference. See initial connection of the dashcam in user manual.
- Purchase the TF card from legal channel. To ensure safe and stable data storage, it is recommended using TF card of Class 10 or above.
- Format the new TF card first before using the card.
- To protect TF card from damage, shut down the dashcam before installing and uninstalling the TF card.
- If the dashcam is directly connected to the vehicle power system, you are recommended to power off the dashcam when the engine is off. Disconnect cigarette lighter to avoid insufficient voltage and abnormal startup. Reconnect the cigarette lighter to ensure the dashcam work normally when you start the car again.
- The operating temperature is from -20°C to 70°C (-4° F to 158° F). To protect the dashcam, DO NOT use it in high temperature, low-temperature, or high-humidity environments. Keep the dashcam from rain and dust.
- The manual is subject to update. The functions of dashcams may vary according to different models.

The driving assistance function of the device only sends alarm or warning to the driver and cannot replace the driver's judgement and operation. With the device, you also should drive carefully to avoid traffic accident or violation. Pedestrian or object recognition failure or recognition error may occur due to external factors. DO NOT Overly rely on the driving assistance function.

Troubleshooting

Trouble	Solution
---------	----------

<p>The dashcam drops easily.</p>	<p>Clean the windshield before installation.</p> <p>Check whether the 3M tape is tightly stuck to the electrostatic film before the installation.</p>
<p>Starting the dashcam failed.</p>	<p>Check whether the vehicle is started and power supply is normal.</p> <p>Check whether the car charger is fully connected. Press “RESET” to reboot the device.</p> <p>Restore to defaults: hold the RESET button until the startup music is heard.</p>
<p>The dashcam powers off easily.</p>	<p>Make sure the power cord is in good condition.</p> <p>Make sure the power cord is tightly connected to the according interfaces.</p>

<p>Recording is abnormal and indicator is unlit.</p>	<p>Make sure that the dashcam started up successfully.</p> <p>Check whether the TF card is inserted.</p> <p>Check the status of TF card, e.g. its format, its lifespan. Change TF card if it does not work well.</p>
<p>The recording is blurred.</p>	<p>Make sure the protective film is peeled off.</p> <p>Check whether the windshield or the lens of the dashcam is blurred.</p>
<p>Wi-Fi cannot be searched.</p>	<p>Check whether the device is in Wi-Fi mode. Wi-Fi connection is available for Android phones. Connect Wi-Fi through System->Wi-Fi (different entries for different phone models).</p>

Dashcam reboots itself.	Check whether the car charger is fully connected.
The mobile phone cannot connect dashcam.	<p>Make sure the HikDashcam app is installed.</p> <p>Please restore dashcam to the app.</p>

Trouble	Solution
The mobile phone cannot display recordings.	<ul style="list-style-type: none"> It may be relevant with the player or system of the phone. Please connect TF card to your computer and display the recordings.
Wi-Fi connection takes a long time.	<ul style="list-style-type: none"> It may be caused by the interference of the surrounding Wi-Fi signals. Please use the dashcam in an environment of less interference. Shut down unnecessary programs in your phone to release some resources for HikDashcam app and reconnect Wi-Fi.

Legal Statement

2022 Hangzhou HikAuto Technology Co., Ltd. All rights reserved.

About this Manual

The Manual includes instructions for using and managing the Product. Pictures, charts, images and all other information hereinafter are for description and explanation only. The information contained in the Manual is

subject to change, without notice, due to firmware updates or other reasons.

Trademarks

- HIKVISION and other Hi vision's trademarks and logos are the properties of Hikvision in various jurisdictions.
- Other trademarks and logos mentioned are the properties of their respective owners.

Disclaimer

TO THE MAXIMUM EXTENT PERMITTED BY APPLICABLE LAW, THIS MANUAL AND THE PRODUCT DESCRIBED, WITH ITS HARDWARE, SOFTWARE AND FIRMWARE, ARE PROVIDED "AS IS" AND "WITH ALL FAULTS AND ERRORS". HIKAUTO MAKES NO WARRANTIES, EXPRESS OR IMPLIED, INCLUDING WITHOUT LIMITATION, MERCHANTABILITY, SATISFACTORY QUALITY, OR FITNESS FOR A PARTICULAR PURPOSE. THE USE OF THE PRODUCT BY YOU IS AT YOUR OWN RISK. IN NO EVENT WILL HIKAUTO BE LIABLE TO YOU FOR ANY SPECIAL, CONSEQUENTIAL, INCIDENTAL, OR INDIRECT DAMAGES, INCLUDING, AMONG OTHERS, DAMAGES FOR LOSS OF BUSINESS PROFITS, BUSINESS INTERRUPTION, OR LOSS OF DATA, CORRUPTION OF SYSTEMS, OR LOSS OF DOCUMENTATION, WHETHER BASED ON BREACH OF CONTRACT, TORT (INCLUDING NEGLIGENCE), PRODUCT LIABILITY, OR OTHERWISE, IN CONNECTION WITH THE USE OF THE PRODUCT, EVEN IF HIKAUTO HAS BEEN ADVISED OF THE POSSIBILITY OF SUCH DAMAGES OR LOSS.

YOU ACKNOWLEDGE THAT THE NATURE OF THE INTERNET PROVIDES FOR INHERENT SECURITY RISKS, AND HIKAUTO SHALL NOT TAKE ANY RESPONSIBILITY FOR ABNORMAL OPERATION, PRIVACY LEAKAGE OR OTHER DAMAGES RESULTING FROM CYBER-ATTACKS, HACKER ATTACK, VIRUS INFECTIONS, OR OTHER INTERNET SECURITY RISKS; HOWEVER, HIKAUTO WILL PROVIDE TIMELY TECHNICAL SUPPORT IF REQUIRED. YOU AGREE TO USE THIS PRODUCT IN COMPLIANCE WITH ALL APPLICABLE LAWS, AND YOU ARE SOLELY RESPONSIBLE FOR ENSURING THAT YOUR USE CONFORMS TO THE APPLICABLE LAW. ESPECIALLY YOU ARE RESPONSIBLE, FOR USING THIS PRODUCT IN A MANNER THAT DOES NOT INFRINGE ON THE RIGHTS OF THIRD PARTIES, INCLUDING WITHOUT LIMITATION, RIGHTS OF PUBLICITY, INTELLECTUAL PROPERTY RIGHTS, OR DATA PROTECTION AND OTHER PRIVACY RIGHTS. YOU SHALL NOT USE THIS PRODUCT FOR ANY PROHIBITED END-USES, INCLUDING THE DEVELOPMENT OR PRODUCTION OF WEAPONS OF MASS DESTRUCTION, THE DEVELOPMENT OR PRODUCTION OF CHEMICAL OR BIOLOGICAL WEAPONS, ANY ACTIVITIES IN THE CONTEXT RELATED TO ANY NUCLEAR EXPLOSIVE OR UNSAFE NUCLEAR FUEL-CYCLE, OR IN SUPPORT OF HUMAN RIGHTS ABUSES. IN THE EVENT OF ANY CONFLICTS BETWEEN THIS MANUAL AND THE APPLICABLE LAW, THE LATER PREVAILS.

Regulatory Information

FCC Information

Please take attention that changes or modifications not expressly approved by the party responsible for compliance could void the user's authority to operate the equipment.

FCC compliance: This equipment has been tested and found to comply with the limits for a Class B digital device, pursuant to part 15 of the FCC Rules. These limits are designed to provide reasonable protection against harmful interference when the equipment is operated in a residential environment. This equipment generates, uses and can radiate radio frequency energy and, if not installed and used in accordance with the instructions, may cause harmful interference to radio communications. However, there is no guarantee that interference will not occur in a particular installation. If this equipment does cause harmful interference to radio or television reception, which can be determined by turning the equipment off and on, the user is encouraged to try to correct the interference by one or more of the following measures:

- Reorient or relocate the receiving antenna.
- Increase the separation between the equipment and the receiver.
- Connect the equipment into an outlet on a circuit different from that to which the receiver is connected.
- Consult the dealer or an experienced radio/TV technician for help

FCC Conditions

This device complies with part 15 of the FCC Rules. Operation is subject to the following two conditions:

1. This device may not cause harmful interference.
2. This device must accept any interference received, including interference that may cause undesired operation.

The equipment should be installed and operated with a minimum distance 20 cm between the radiator and your body.

EU Conformity Statement

This product and – if applicable – the supplied accessories too are marked with “CE” and comply therefore with the applicable harmonized European standards listed under the RE Directive 2014/53/EU, the EMC Directive 2014/30/EU, the LVD Directive 2014/35/EU, the RoHS Directive 2011/65/EU, 2012/19/EU (WEEE directive): Products marked with this symbol cannot be disposed of as unsorted municipal waste in the European Union. For proper recycling, return this product to your local supplier upon the purchase of equivalent new equipment, or dispose of it at designated collection points. For more information see: www.recyclethis.info.

2006/66/EC (battery directive): This product contains a battery that cannot be disposed of as unsorted municipal waste in the European Union. See the product documentation for specific battery information. The battery is marked with this symbol, which may include lettering to indicate cadmium (Cd), lead (Pb), or mercury (Hg). For proper recycling, return the battery to your supplier or to a designated collection point. For more information see: www.recyclethis.info.


Industry Canada ICES-003 Compliance

This device meets the CAN ICES-3 (B)/NMB-3(B) standards requirements. This device complies with Industry Canada license-exempt RSS standard(s). Operation is subject to the following two conditions:

1. this device may not cause interference, and
2. this device must accept any interference, including interference that may cause undesired operation of the device.

This equipment should be installed and operated with a minimum distance 20cm between the radiator and your body.

Documents / Resources

	HIKVISION D1 Dashcam [pdf] User Manual AED1, 2ADTD-AED1, 2ADTDAED1, D1 Dashcam, D1, Dashcam
---	--

References

- [HOME](#)