



HIKVISION AX PRO Wireless Control Panel User Guide

[Home](#) » [Hikvision](#) » HIKVISION AX PRO Wireless Control Panel User Guide



How to Add Wireless Detector to AX PRO Wireless Control Panel

Title:	How to Add Wireless Detector to AX PRO Wireless Control Panel	Version:	v1.0	Date:	09/07/2020
Product:	DS-PWA Series AX PRO Wireless Security Control Panel			Page:	1 of 2

Contents [[hide](#)]

[1 Preparation](#)

[2 How to Add Wireless Detector to AX PRO Wireless Control Panel](#)

[3 Use Hik Connect APP QR Add Function](#)

[4 Use Hik Connect APP Enrollment Function](#)

[5 Use AX Pro Brower Enrollment Function](#)

[6 Documents / Resources](#)

[7 Related Posts](#)

Preparation


1. DS-PWA Series AX PRO Wireless Security Control Panel

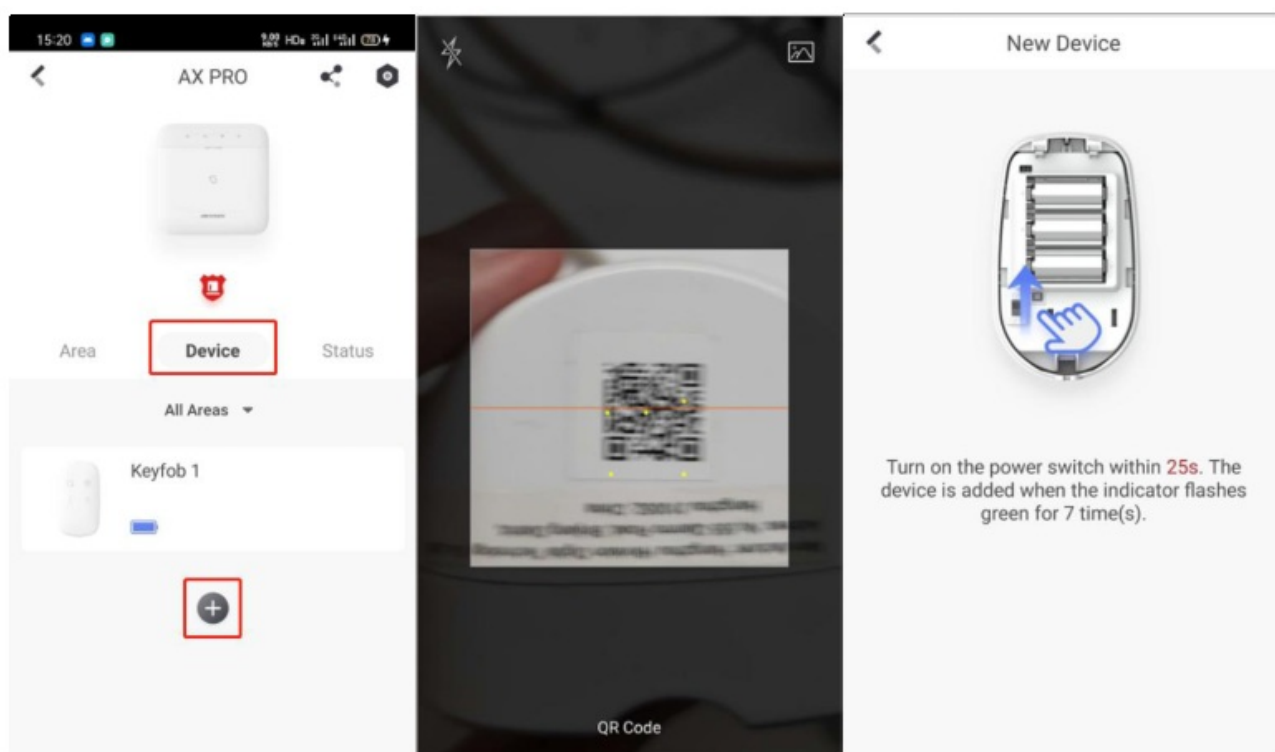
2. Wireless Detector DS-PDPC12P-EG2-WE
3. IE explorer and App Hik-Connect

How to Add Wireless Detector to AX PRO Wireless Control Panel


For AX PRO Panel, You can use the Login AX PRO Hik-Connect interface to add detector (Scan the detector QR code) or enable Enrollment Mode , or login E Browser with Hik-Connect account and password, then enable Enrollment Mode.

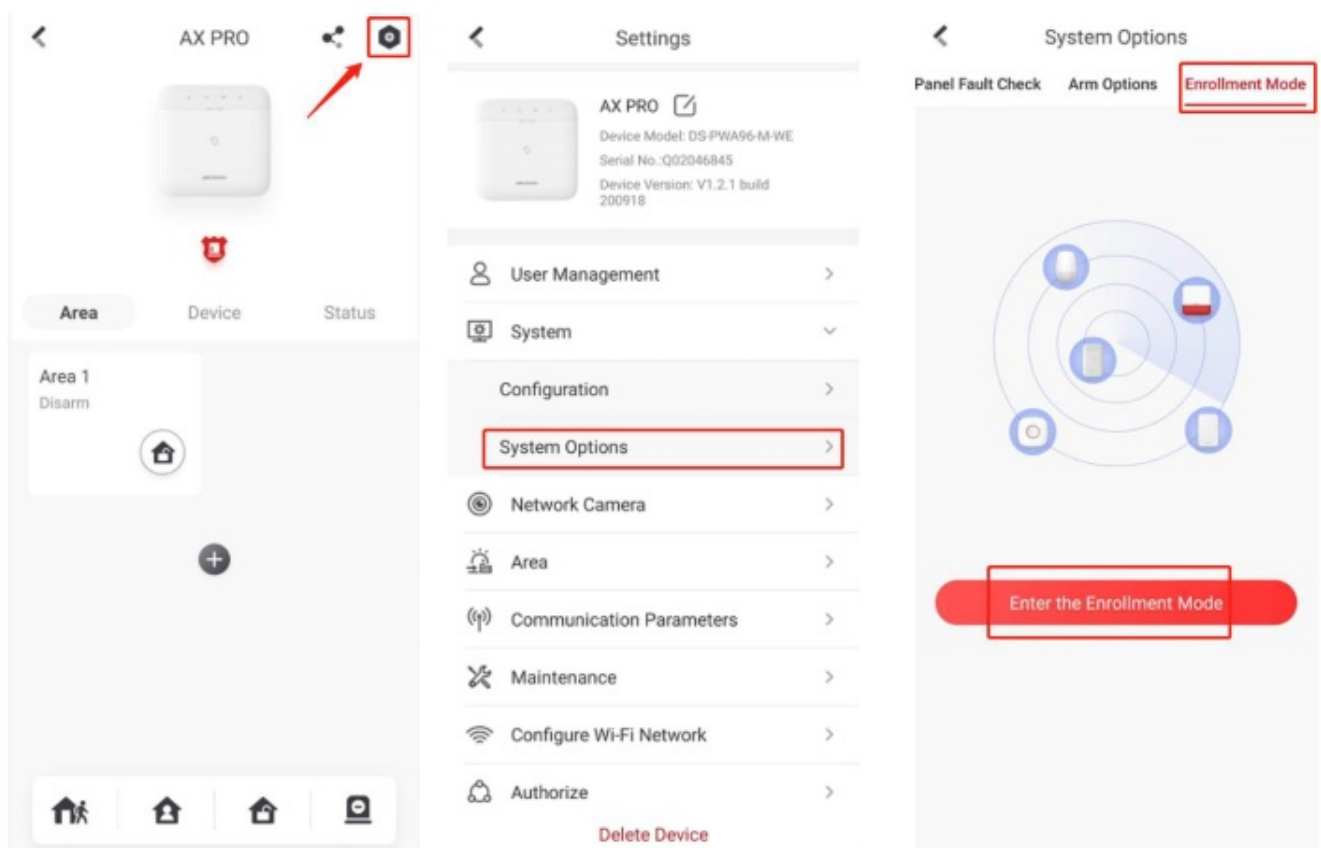
Use Hik Connect APP QR Add Function

1. Add the AX PRO to Hik-connect at first
2. Login AX PRO, select Device and click , scan the QR code and follow the steps.



Use Hik Connect APP Enrollment Function

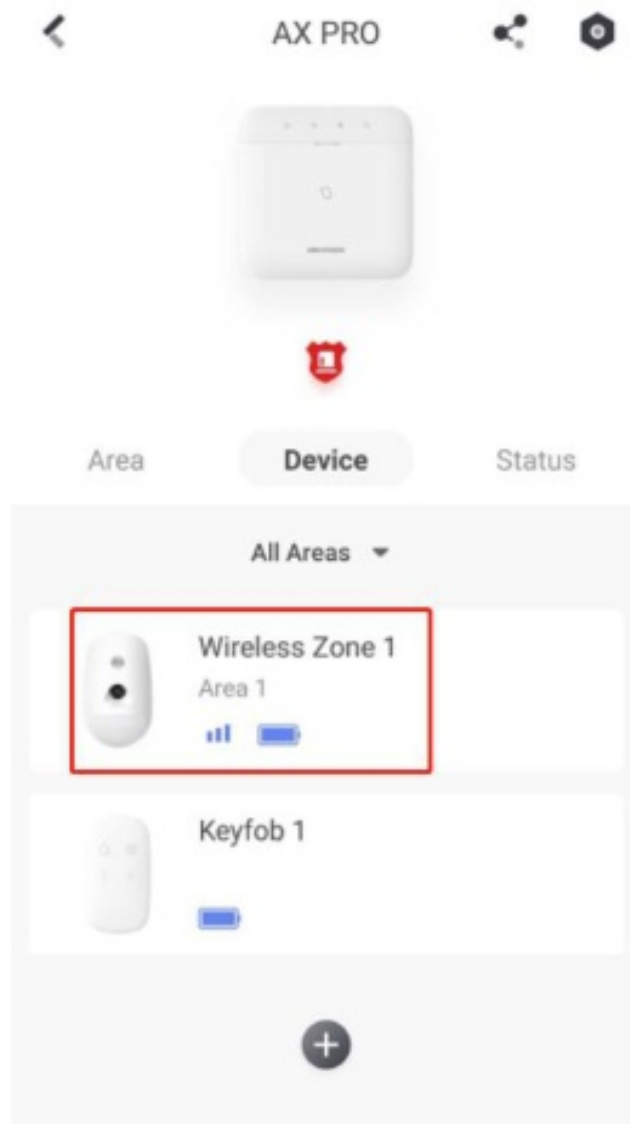
1. Add the AX PRO to Hik-connect at first
2. Login AX PRO, select Device and click , select System—System Options—Enrollment Mode, and Enable Enrollment Mode.



3. Turn on the power switch of the Detector.

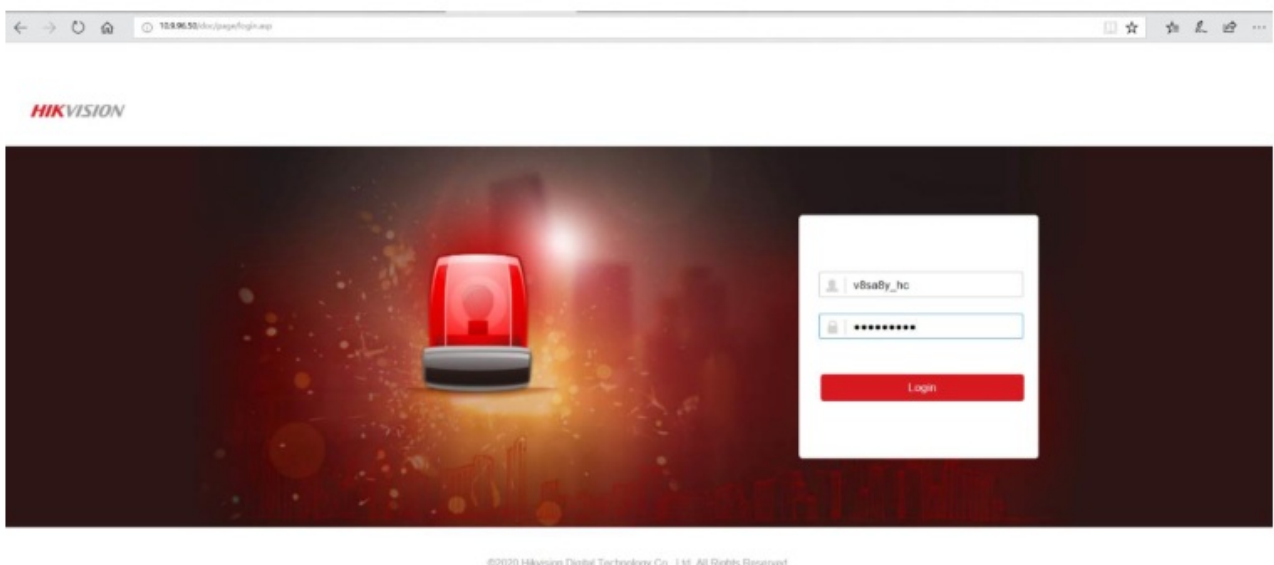


4. Check the status of Detector

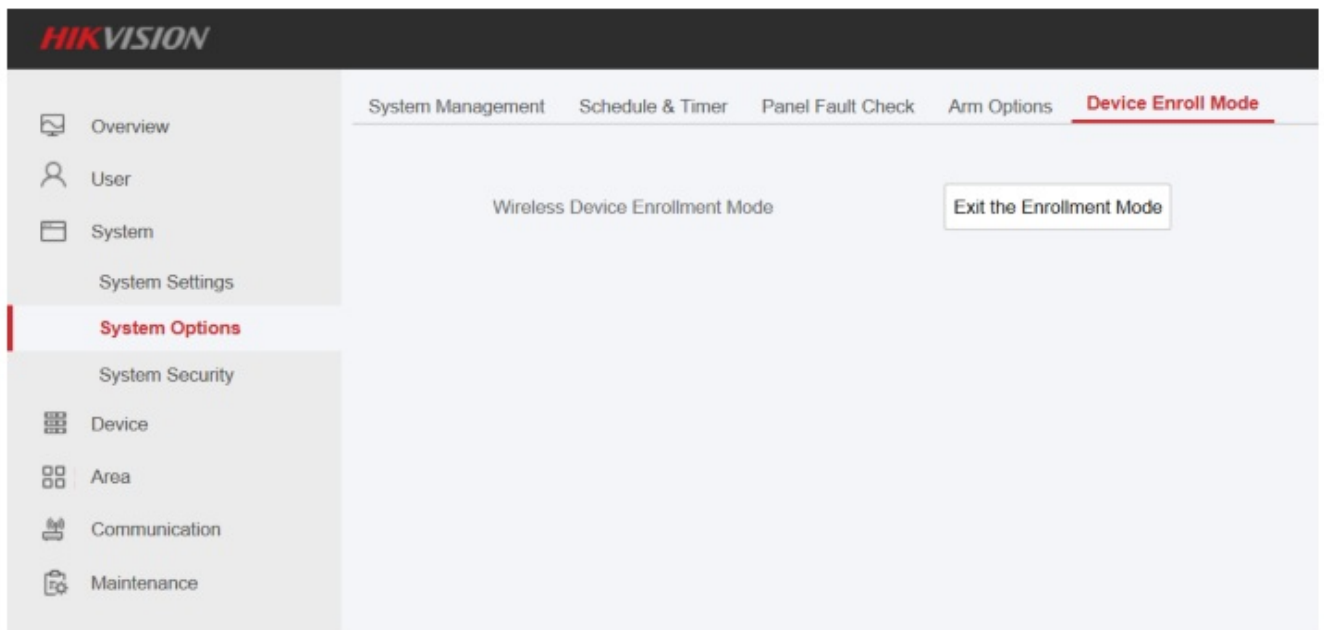


Use AX Pro Brower Enrollment Function

1. Add the AX PRO to Hik-connect at first
2. Use Brower Login Panel IP, account and password is Hik-Connect account and password.



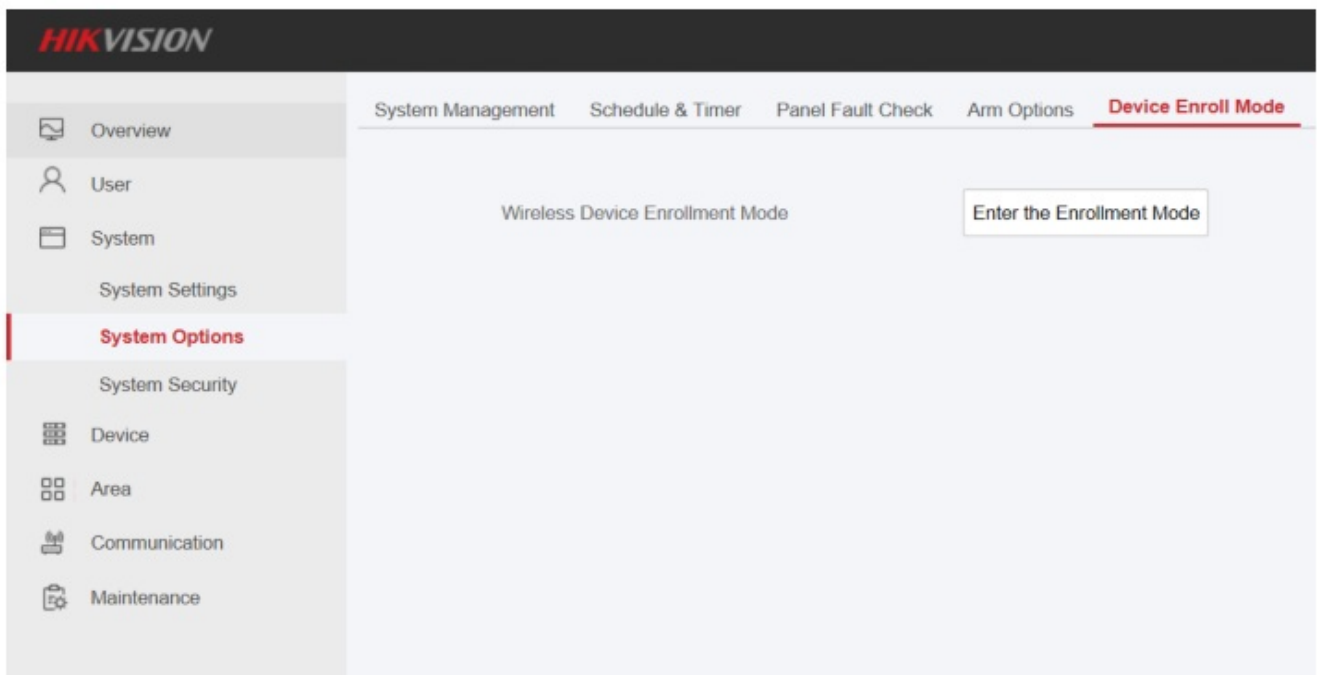
3. Select System—System Options—Device Enroll Mode, enable Enter the Enrollment Mode



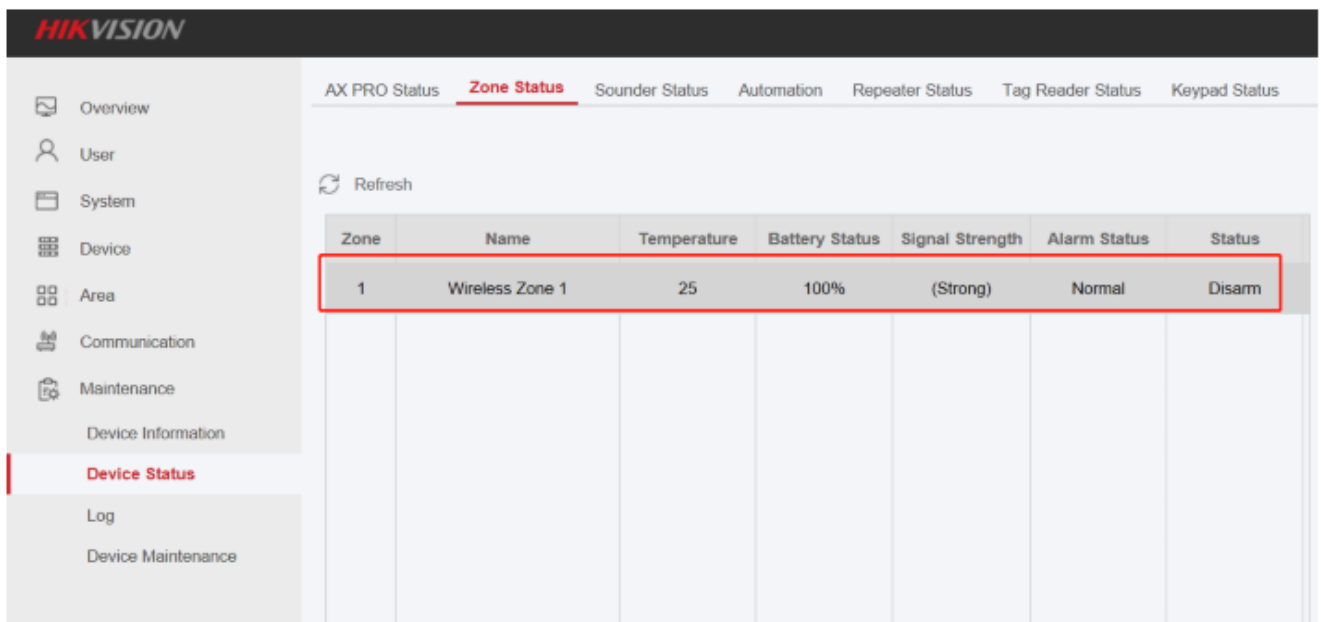
4. Turn on the power switch of Detector.



5. After finish adding click Exit the Enrollment Mode to exit.



6. Check the Detector Status: Maintenance—Device Status—Zone Status



SEE Far, Go Further
Security
 WHOLESALE

Documents / Resources



How to Add Wireless Sensor to AX PRO Wireless Control Panel

[HIKVISION AX PRO Wireless Control Panel](#) [pdf] User Guide

AX PRO Wireless Control Panel