



# HIKVISION AX PRO M2 Alarm Control Panel User Guide

[Home](#) » [Hikvision](#) » HIKVISION AX PRO M2 Alarm Control Panel User Guide 

## Contents

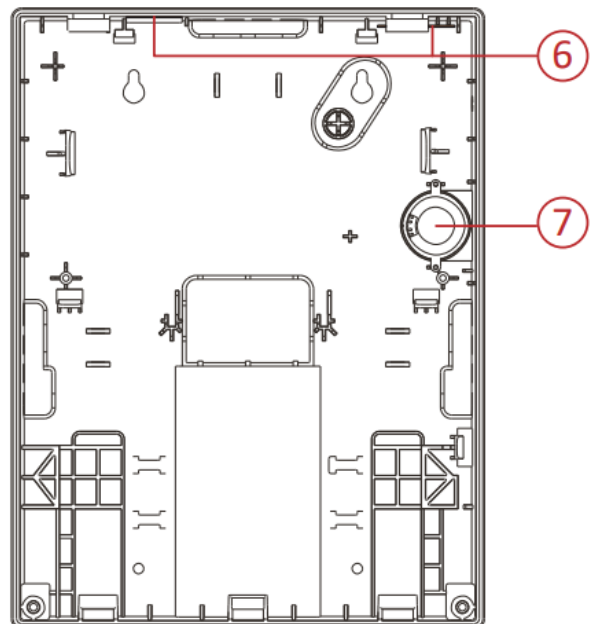
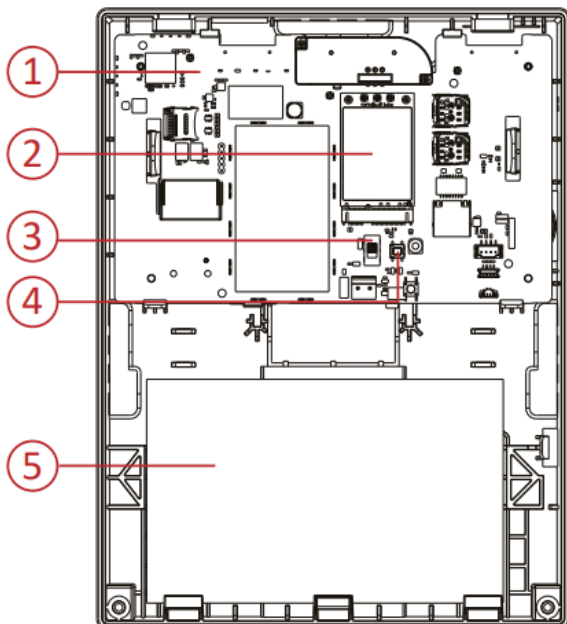
- [1 HIKVISION AX PRO M2 Alarm Control Panel](#)
- [2 Appearance](#)
- [3 Installation](#)
- [4 Set-Up](#)
- [5 Specification](#)
- [6 FCC](#)
- [7 Documents / Resources](#)
  - [7.1 References](#)
- [8 Related Posts](#)



## HIKVISION AX PRO M2 Alarm Control Panel



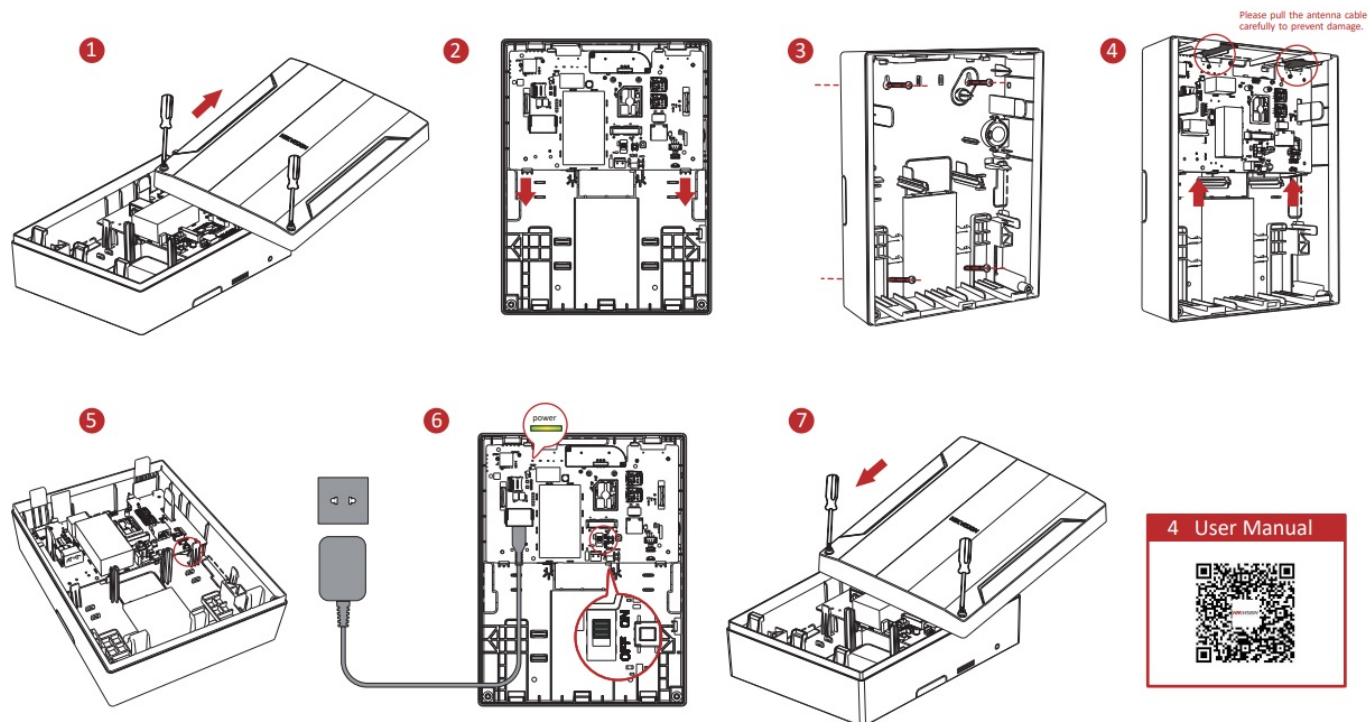
### Appearance



1. Main Board
2. 4G Module
3. Power Switch
4. Tamper Switch

5. Battery
6. Antenna Position
7. Loudspeaker

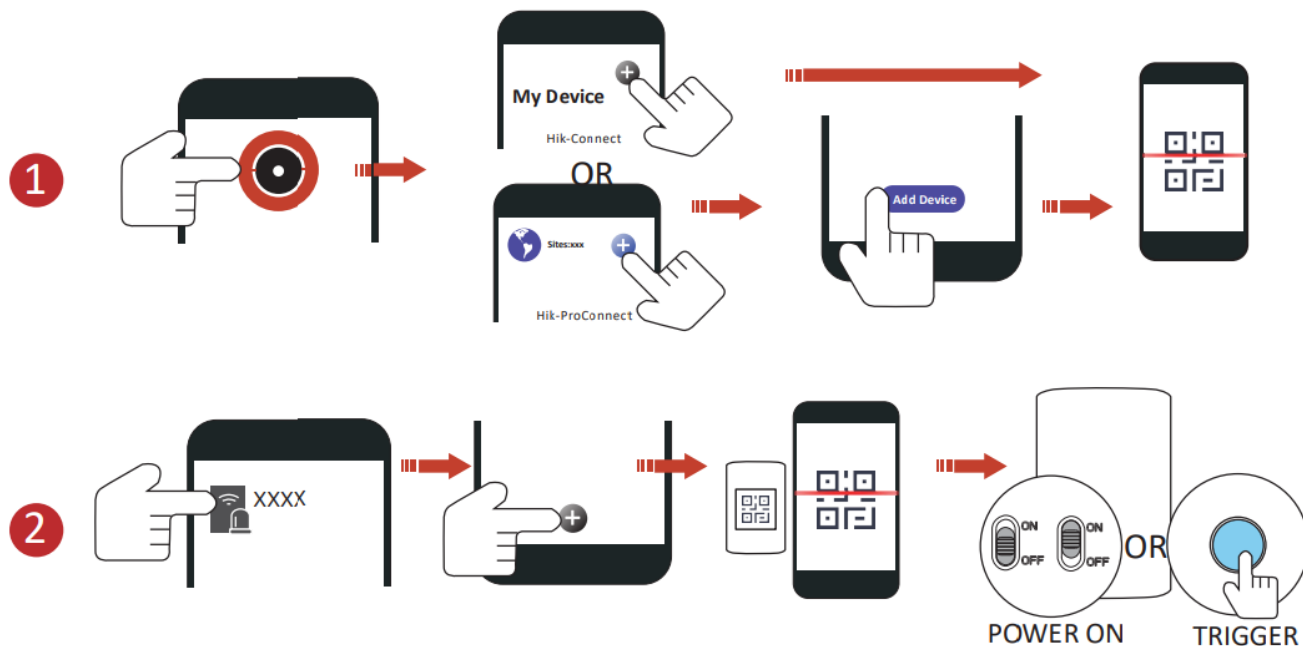
## Installation



**Note:** Power down the control panel before installation.

1. Loosen the screws and open the case.
2. Take out the mainboard.
3. Fix the rear case on the wall.
4. Install the mainboard.
5. Install the loudspeaker.
6. Connect the power supply and turn on the switch.
7. Close the case and tighten the screws.

## Set-Up



1. Add the AX PRO to Hik-ProConnect or Hik-Connect APP.
2. Enroll the peripheral to the AX PRO.

## Specification

Basic	RF frequency	433 Mhz
	Keyfob	48
	Wireless sounder	6
	Keypad	8 (Including tag reader)
	Wireless repeater	4
	Tag	48
	Zone	96 (up to 48 PIRCAMs)
	Transmitter	Up to 96 (Single), up to 6 (Multi)
	Onboard video clip	4
User	Admin, installer, user	1, 120, 46
Software	Area	32
	LEDs indication	Arm/Disarm, Alarm, Alert, Cloud, Power
	Memory Log stored	Alarm&abnormal (3000), user operation (1500), user management (200)
	Programming tool	Hik-Connect/Hik-ProConnect/Web Portal/IVMS4200/ Convergence Cloud
Communication	Network	Wired network, Wi-Fi, 3/4G on board
	ARC protocol	SIA DC09 (SIA level 2, Contact ID), ISUP, ISAPI (SDK), CSV-IP, FSK Module
		Hik-IP Receiver & Hik-IP Receiver Pro (Sur-Gard & Ademco 685)
		Supports video verification and remote control
	SIM slot	Dual
Hardware	Power supply	100 to 240V~, 50/60 Hz, 0.2A to 0.1A
	Battery type	12v 7Ah storage battery (sold separately), up to 36 hours
Others	Operation temperature	-10 °C to 40 °C
	Dimension (W×H×D)	261 mm × 199 mm × 86.4 mm
	Weight	975g (No battery)

## FCC

### FCC Information

Please take attention that changes or modifications not expressly approved by the party responsible for compliance could void the user's authority to operate the equipment.

FCC compliance: This equipment has been tested and found to comply with the limits for a Class B digital device, pursuant to part 15 of the FCC Rules. These limits are designed to provide reasonable protection against harmful interference in a residential installation. This equipment generates, uses and can radiate radio frequency energy and, if not installed and used in accordance with the instructions, may cause harmful interference to radio communications. However, there is no guarantee that interference will not occur in a particular installation. If this equipment does cause harmful interference to radio or television reception, which can be determined by turning the equipment off and on, the user is encouraged to try to correct the interference by one or more of the following measures:

- Reorient or relocate the receiving antenna.
- Increase the separation between the equipment and receiver.
- Connect the equipment into an outlet on a circuit different from that to which the receiver is connected.
- Consult the dealer or an experienced radio/TV technician for help.

This equipment should be installed and operated with a minimum distance 20cm between the radiator and your body.

### FCC Conditions

This device complies with part 15 of the FCC Rules. Operation is subject to the following two conditions:

1. This device may not cause harmful interference.
2. This device must accept any interference received, including interference that may cause undesired operation

TO THE MAXIMUM EXTENT PERMITTED BY APPLICABLE LAW, THIS MANUAL AND THE PRODUCT DESCRIBED, WITH ITS HARDWARE, SOFTWARE AND FIRMWARE, ARE PROVIDED "AS IS" AND "WITH ALL FAULTS AND ERRORS". HIKVISION MAKES NO WARRANTIES, EXPRESS OR IMPLIED, INCLUDING WITHOUT LIMITATION, MERCHANTABILITY, SATISFACTORY QUALITY, OR FITNESS FOR A PARTICULAR PURPOSE. THE USE OF THE PRODUCT BY YOU IS AT YOUR OWN RISK. IN NO EVENT WILL HIKVISION BE LIABLE TO YOU FOR ANY SPECIAL, CONSEQUENTIAL, INCIDENTAL, OR INDIRECT DAMAGES, INCLUDING, AMONG OTHERS, DAMAGES FOR LOSS OF BUSINESS PROFITS, BUSINESS INTERRUPTION, OR LOSS OF DATA, CORRUPTION OF SYSTEMS, OR LOSS OF DOCUMENTATION, WHETHER BASED ON BREACH OF CONTRACT, TORT (INCLUDING NEGLIGENCE), PRODUCT LIABILITY, OR OTHERWISE, IN CONNECTION WITH THE USE OF THE PRODUCT, EVEN IF HIKVISION HAS BEEN ADVISED OF THE POSSIBILITY OF SUCH DAMAGES OR LOSS.

YOU ACKNOWLEDGE THAT THE NATURE OF THE INTERNET PROVIDES FOR INHERENT SECURITY RISKS, AND HIKVISION SHALL NOT TAKE ANY RESPONSIBILITY FOR ABNORMAL OPERATIONS, PRIVACY LEAKAGE OR OTHER DAMAGES RESULTING FROM CYBER-ATTACKS, HACKER ATTACKS, VIRUS INFECTIONS, OR OTHER INTERNET SECURITY RISKS; HOWEVER, HIKVISION WILL PROVIDE TIMELY TECHNICAL SUPPORT IF REQUIRED.

YOU AGREE TO USE THIS PRODUCT IN COMPLIANCE WITH ALL APPLICABLE LAWS, AND YOU ARE SOLELY RESPONSIBLE FOR ENSURING THAT YOUR USE CONFORMS TO THE APPLICABLE LAW. ESPECIALLY, YOU ARE RESPONSIBLE, FOR USING THIS PRODUCT IN A MANNER THAT DOES NOT INFRINGE ON THE RIGHTS OF THIRD PARTIES, INCLUDING WITHOUT LIMITATION, RIGHTS OF PUBLICITY, INTELLECTUAL PROPERTY RIGHTS, OR DATA PROTECTION AND OTHER PRIVACY RIGHTS. YOU SHALL NOT USE THIS PRODUCT FOR ANY PROHIBITED END-USES, INCLUDING THE DEVELOPMENT OR PRODUCTION OF WEAPONS OF MASS DESTRUCTION, THE DEVELOPMENT OR PRODUCTION OF CHEMICAL OR BIOLOGICAL WEAPONS, ANY ACTIVITIES IN THE CONTEXT RELATED TO ANY NUCLEAR EXPLOSIVE OR UNSAFE NUCLEAR FUEL-CYCLE, OR IN SUPPORT OF HUMAN RIGHTS ABUSES. IN THE EVENT OF ANY CONFLICTS BETWEEN THIS MANUAL AND THE APPLICABLE LAW, THE LATTER PREVAILS.

- This product and – if applicable – the supplied accessories too are marked with “CE” and comply therefore with the applicable harmonized European standards listed under the RE Directive 2014/53/EU, the EMC Directive 2014/30/EU, the RoHS Directive 2011/65/EU
- 2012/19/EU (WEEE directive): Products marked with this symbol cannot be disposed of as unsorted municipal waste in the European Union. For proper recycling, return this product to your local supplier upon the purchase of equivalent new equipment, or dispose of it at designated collection points. For more information see: [www.recyclethis.info](http://www.recyclethis.info)
- 2006/66/EC (battery directive): This product contains a battery that cannot be disposed of as unsorted municipal waste in the European Union. See the product documentation for specific battery information. The battery is marked with this symbol, which may include lettering to indicate cadmium (Cd), lead (Pb), or mercury (Hg). For proper recycling, return the battery to your supplier or to a designated collection point. For more information see: [www.recyclethis.info](http://www.recyclethis.info)


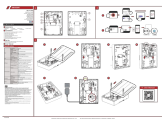
## CAUTION

In the use of the product, you must be in strict compliance with the electrical safety regulations of the nation and region. The equipment shall not be exposed to dripping or splashing and that no objects filled with liquids, such as vases, shall be placed on the equipment. The socket-outlet shall be installed near the equipment and shall be easily accessible. Ensure correct wiring of the terminals for connection to an AC mains supply. The equipment has been designed, when required, modified for connection to an IT power distribution system. No naked flame sources, such as lighted candles, should be placed on the equipment. The serial port of the equipment is used for debugging only. This equipment is not suitable for use in locations where children are likely to be present. Install the equipment according to the instructions in this manual. To prevent injury, this equipment must be securely attached to the floor/wall in accordance with the installation instructions. To prevent possible hearing damage, do not listen at high volume levels for long periods. The additional force shall be equal to three times the weight of the equipment but not less than 50N. The equipment and its associated mounting means shall remain secure during the installation. After the installation, the equipment, including any associated mounting plate, shall not be damaged.

## BATTERY CAUTION

1. Improper replacement of the battery with an incorrect type may defeat a safeguard (for example, in the case of some lithium battery types).
2. Do not dispose of the battery into fire or a hot oven, or mechanically crush or cut the battery, which may result in an explosion.
3. Do not leave the battery in an extremely high temperature surrounding environment, which may result in an explosion or the leakage of flammable liquid or gas.
4. Do not subject the battery to extremely low air pressure, which may result in an explosion or the leakage of flammable liquid or gas.
5. Dispose of used batteries according to the instructions.
6. + identifies the positive terminal(s) of equipment which is used with, or generates direct current. – identifies the negative terminal(s) of equipment which is used with, or generates direct current.
7. identifies the battery holder itself and identifies the positioning of the cell(s) inside the battery holder.

## Documents / Resources

	<p><a href="#">HIKVISION AX PRO M2 Alarm Control Panel</a> [pdf] User Guide CP03009601219, 2ADTD-CP03009601219, 2ADTDCP03009601219, AX PRO M2, Alarm Control Panel, AX PRO M2 Alarm Control Panel</p>
	<p><a href="#">HIKVISION AX Pro M2 Alarm Control Panel</a> [pdf] User Guide AX Pro M2, Alarm Control Panel, Control Panel, Alarm Panel, AX Pro M2, Panel</p>

References

- [🌐 HOME](#)
- [🌐 Hikvision US | The world’s largest video surveillance manufacturer |](#)

Manuals+.