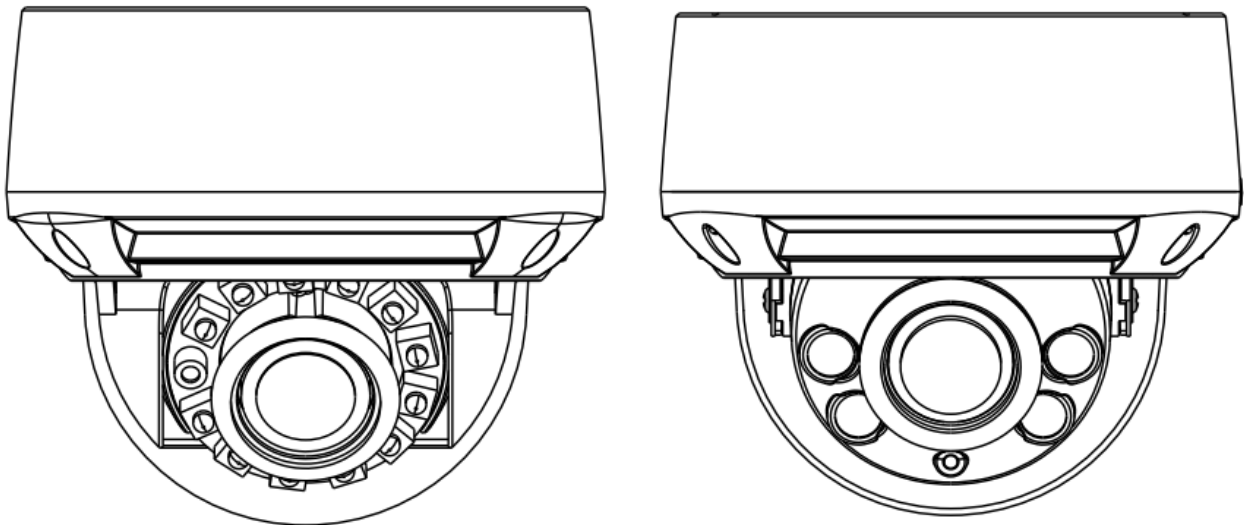




HIKVISION AN-IPV xUAR Series Vandal Dome Network Camera User Guide

[Home](#) » [Hikvision](#) » HIKVISION AN-IPV xUAR Series Vandal Dome Network Camera User Guide 

HIKVISION[®] AN-IPV xUAR Series Vandal Dome Network Camera User Guide






Contents

- [1 Precautions](#)
- [2 Special Announcement](#)
- [3 Open Package Examination](#)
- [4 Device Structure](#)
- [5 Device Installation](#)
- [6 Quick Configuration\(e.g IE\)](#)
- [7 Documents / Resources](#)
- [8 Related Posts](#)

Precautions

Fully understand this document before using this device, and strictly observe rules in this document when using this device. If you install this device in public places, provide the tip “You have entered the area of electronic surveillance” in an eye-catching place. Failure to correctly use electrical products may cause fire and severe injuries.

 WARNING	It alerts you to moderate dangers which, if not avoided, may cause minor or moderate injuries.
 CAUTION	It alerts you to risks. Neglect of these risks may cause device damage, data loss, device performance deterioration, or unpredictable results.
 NOTE	It provides additional information.

WARNING

- Strictly observe installation requirements when installing the device. The manufacturer shall not be held responsible for device damage caused by users' non-conformance to these requirements.
- Strictly conform to local electrical safety standards and use power adapters that are marked with the LPS standard when installing and using this device. Otherwise, this device may be damaged.
- Use accessories delivered with this device. The voltage must meet input voltage requirements for this device.
- If this device is installed in places with unsteady voltage, ground this device to discharge high energy such as electrical surges in order to prevent the power supply from burning out.
- When this device is in use, ensure that no water or any liquid flows into the device. If water or liquid unexpectedly flows into the device, immediately power off the device and disconnect all cables (such as power cables and network cables) from this device.
- Do not focus strong light (such as lighted bulbs or sunlight) on this device. Otherwise, the service life of the image sensor may be shortened.
- If this device is installed in places where thunder and lightning frequently occur, ground the device nearby to discharge high energy such as thunder strikes in order to prevent device damage.

CAUTION

- Avoid heavy loads, intensive shakes, and soaking to prevent damages during transportation and storage. The warranty does not cover any device damage that is caused during secondary packaging and transportation after the original packaging is taken apart.
- Protect this device from fall-down and intensive strikes, keep the device away from magnetic field interference, and do not install the device in places with shaking surfaces or under shocks.
- Clean the device with a soft dry cloth. For stubborn dirt, dip the cloth into slight neutral cleanser, gently wipe the dirt with the cloth, and then dry the device.
- Do not jam the ventilation opening. Follow the installation instructions provided in this document when installing the device.
- Keep the device away from heat sources such as radiators, electric heaters, or other heat equipment.
- Keep the device away from moist, dusty, extremely hot or cold places, or places with strong electric radiation.

- If the device is installed outdoors, take insect- and moisture proof measures to avoid circuit board corrosion that can affect monitoring.
- Remove the power plug if the device is idle for a long time.

Special Announcement

- All complete products sold by the manufacturer are delivered along with nameplates, quick setup guide and accessories after strict inspection. The manufacturer shall not be held responsible for counterfeit products.
- The manufacturer will update this manual according to product function enhancement or changes and regularly update the software and hardware described in this manual. Update information will be added to new versions of this manual without prior notice.
- This manual may contain misprints, technology information that is not accurate enough, or product function and operation description that is slightly inconsistent with the actual product, the final interpretation of company is as a standard.
- This manual is only for reference and does not ensure that the information is totally consistent with the actual product. For consistency, see the actual product.



NOTE

For more information, please refer to website.

Open Package Examination

Open the package, check the appearance of product for no obvious damage, and confirm the item list for table 1-1 is consistent.

Table 1-1 Packing list

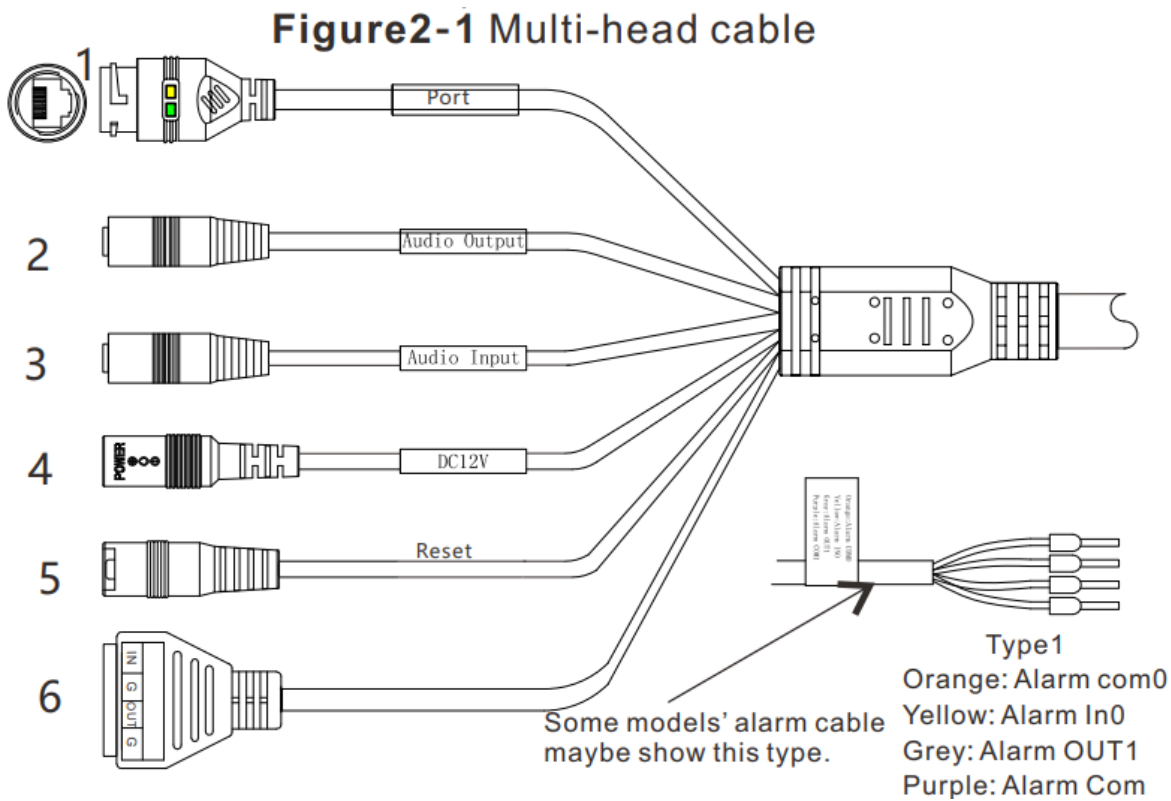
Component	Quantity	Remark
Vandal Dome Network Camera	1	
Quick Setup Guide	1	
T15 Screw driver	1	
Plug wrench	1	
Installation location sticker	1	
Stainless self-tapping screw PA4.0×30mm	3	
Swell plastic buttonφ5.6×29mm	3	
American-made round head screw	3	
Video patch cord	1	
Terminal block 4 PIN	1	
Network access port protective cover	1	
Waterproof rubber seal	1	

Device Structure

2.1 Device Ports

NOTE

Different device may have different ports and multi-head cable, please refer to the actual product.



ID	Core	Description	Remark
1	Network access port	Connects to a standard Ethernet cable or PoE . The green light is on, the network connection is normal; the yellow light flashes when the data is transmitted. Some models maybe not have the lights, please refer to actual product.	Support PoE supply.
2	Audio output	Connects to an external audio device such as a speaker.	Applied for camera with audio function
3	Audio input port	Receives an analog audio signal from devices such as a sound pickup device.	
4	Reset button	Long press the reset button 5 seconds to restore the original settings.	
5	Power supply (DC 12V)	Connects to a 12V direct current (DC) power supply.	
6	G	Alarm output COM	Applied for alarm function
	OUT	Alarm output terminal	
	G	Alarm input COM	
	IN	Alarm input terminal	

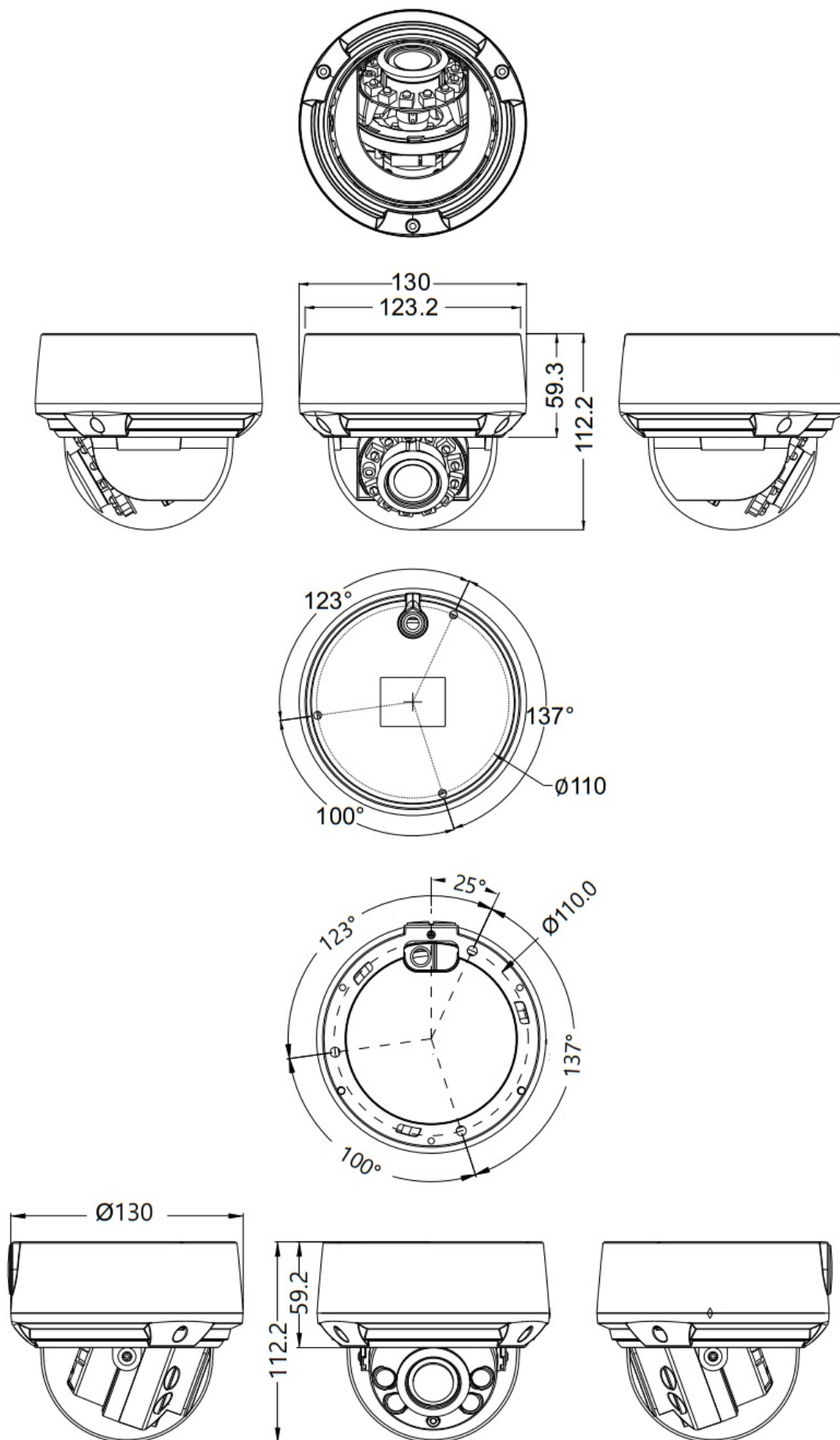
2.2 Camera Dimensions

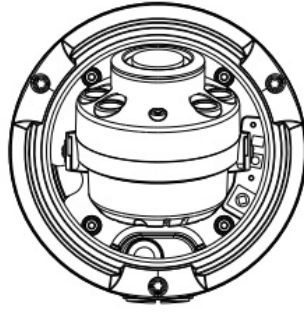


NOTE

Different device may have different dimensions, please refer to the actual product.

Figure 2-2 Dimensions (Unit:mm)





Device Installation



WARNING

To avoid moisture influence, install the dome cover at least half an hour after the camera is installed and powered on.

The vandal dome camera can be installed in the ceiling, wall, wall bracket or ceiling bracket. This section describes how to install the camera in the ceiling.

Installation Steps:

Step 1 Use the T15 screw driver in the accessory package to unscrew the three screws on the dome cover. The camera is opened, as shown in figure 3-1.

Step 2 Stick the Installation location sticker on the ceiling or wall, Drill three holes based on the marks on the sticker. Drive the

Step 3 Press the arrows marked on the lining to remove the lining aside. Unscrew the three black screws and put them aside. Turn the camera base clockwise for 5 degrees and remove it, as shown in figure 3-2.

Figure 3-1 Opening camera

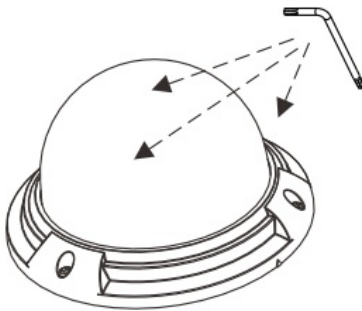
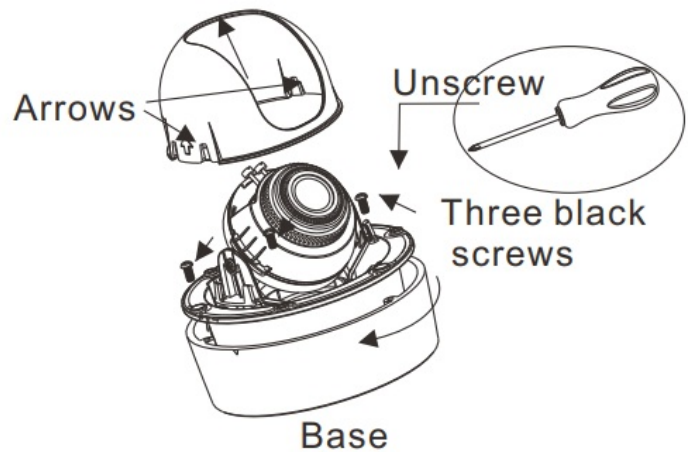
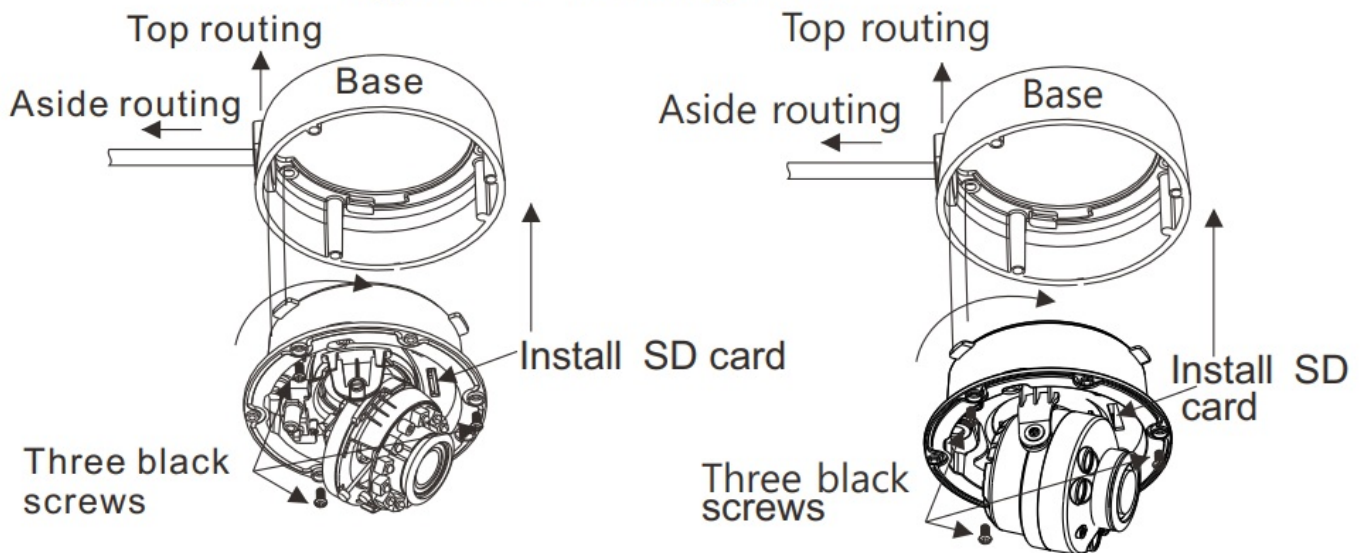


Figure 3-2 Remove lining, base



Step 4 Aim the three through-holes on the camera base at the three swell plastic buttons in the ceiling, and use three screws with a length of 30 mm to fix the base on the ceiling. Turn the main body clockwise for about 5 degrees to assembly it with the camera base, and fix the three screws, as shown in figure 3-3.

Figure 3-3 Installing base



Step 5 Connect the multi-head cable, connect the camera to screen, then view the video, adjust the lens angle horizontally and vertically, Set the value in the Front-end Configuration for AF lens and use the focusing lever for MF lens to adjust the lens Focal length and video angle range (motorized lens cameras can set the lens at sensor setting interface.), as shown in figure 3-4.

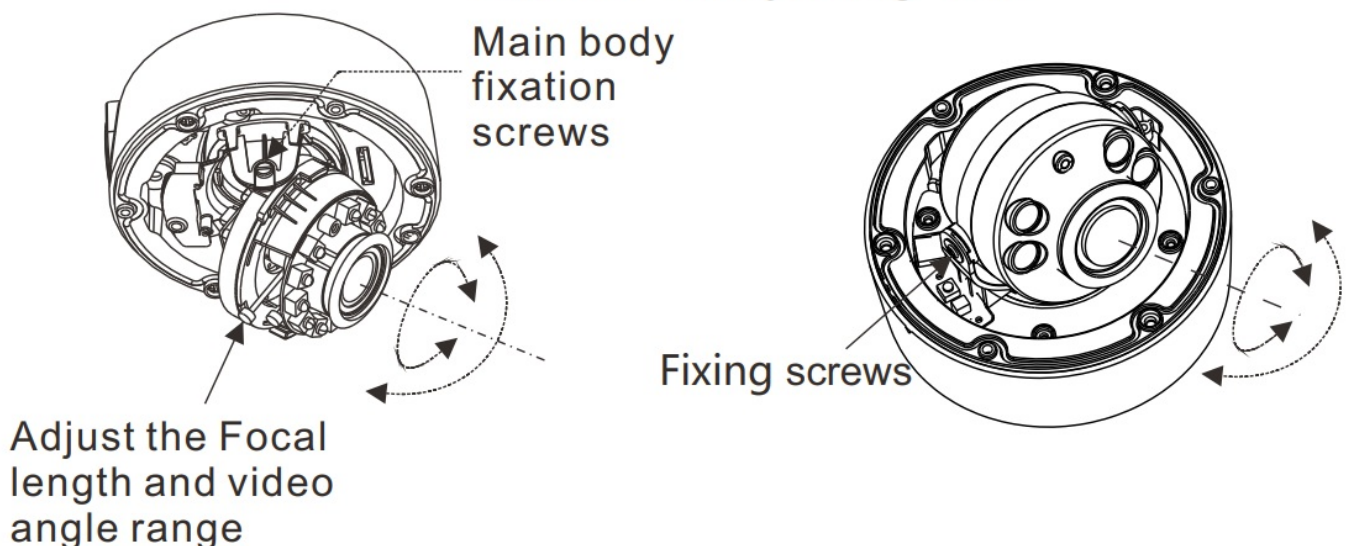


NOTE

There are two modes to install the cables, side outlet and ejector line mode. If the ejector line mode is used, you need to drill the hole on the mounting surface first to facilitate the routing. If the side outlet is used, align the notch of the installation location sticker with the direction of the outgoing line.

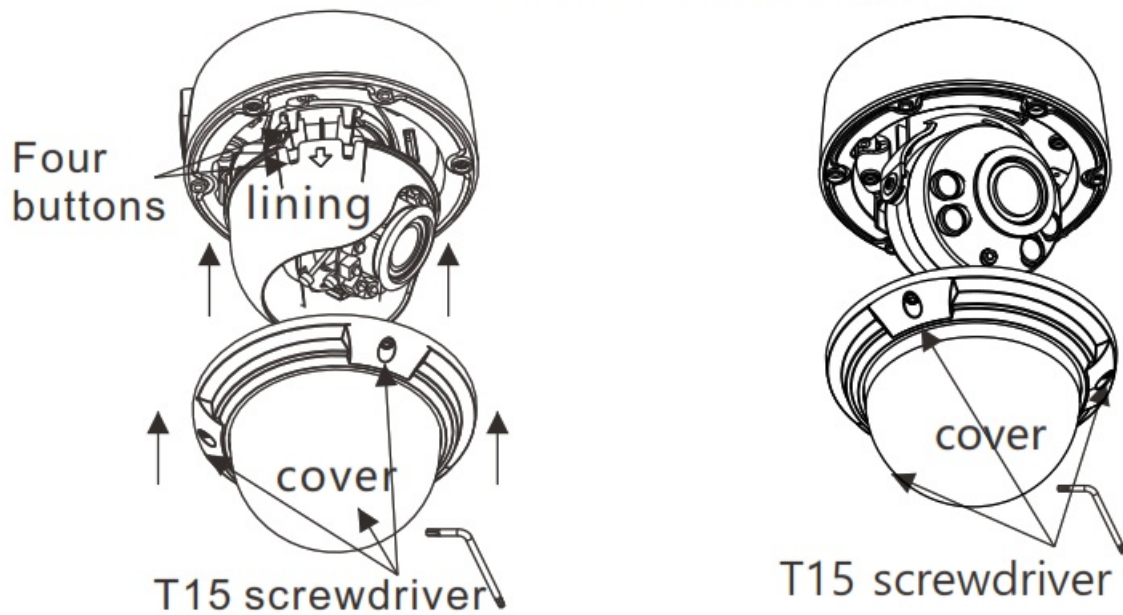
Some cameras maybe not be haven lining, so you don't need to move or install lining, please refer to actual products.

Figure3-4 Adjusting lens



Step 6 Assemble the lining with the main body and buckle the four button placements with the main body bracket. Aim the three screws unscrewed from the dome cover in Step 1, at the three threaded holes on the main body. Then fasten the dome cover, as shown in figure 3-5.

Figure3-5 Assembling base



Quick Configuration(e.g IE)

4.1 Login

Step 1 Open the Internet Explorer, enter the IP address of IP camera (default value: 192.168.0.120 in the address box, and press Enter. The login page is displayed. as shown in figure 4-1 .

Step 2 Input the user name and password.



NOTE

The default user name is admin. The default password is admin. Change the password when you log in the system for first time to ensure system security.

You can change the system display language on the login page.

Figure 4-1 Login

The screenshot shows the login interface for an IP camera. The header features the text 'IP CAMERA' in a large, stylized blue font. To the right of the header, the language is set to 'English' with a dropdown arrow. The main area contains two text input fields labeled 'User Name' and 'Password'. To the right of these fields is a blue button with a white right-pointing arrow, which is the login button.

Step 3 Click Login, the main page is displayed.

4.2 Modify IP address

Choose Configuration > Device > Local Network, the Local Network page is displayed.

Enter the IP address in the IP Address box and click Apply as shown in figure 4-2.

After the success of the IP address setting, please use the new IP address to log in the Web interface.

Figure 4-2 Local Network

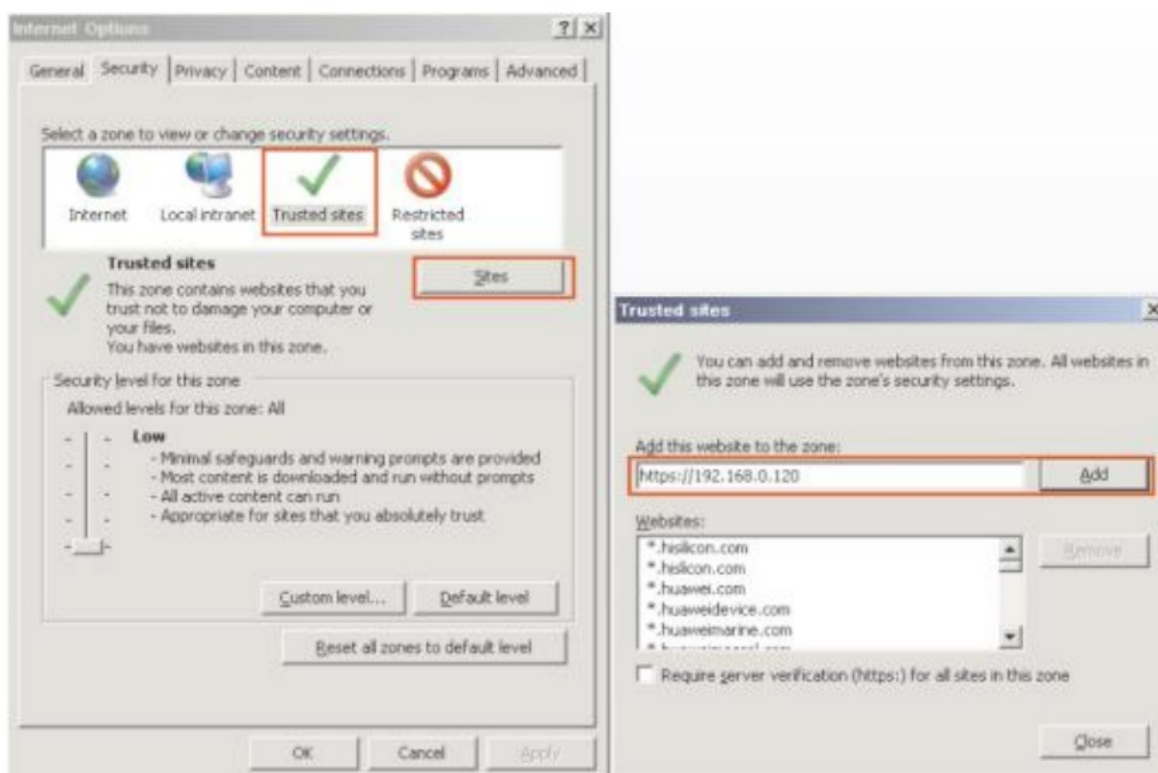
The screenshot shows a 'Local Network' configuration window. At the top, there is a section for 'IP Protocol' with a dropdown menu set to 'IPv4'. Below this is a section for 'DHCP' with a toggle switch set to 'OFF'. The 'DHCP' section contains four input fields: 'IP Address' (192.168.0.120), 'Subnet Mask' (255.255.255.0), 'Default Gateway' (192.168.241.1), and 'Preferred DNS Server' (192.168.0.1). Below the 'DHCP' section is a section for 'Alternate DNS Server' (192.168.0.2) and 'MTU(800-1500)' (1500). At the bottom right, there are two buttons: 'Refresh' and 'Apply'.

4.3 Browsing Video

To ensure the real-time video can be played properly, you must perform the following operation when you log in the web for the first time:

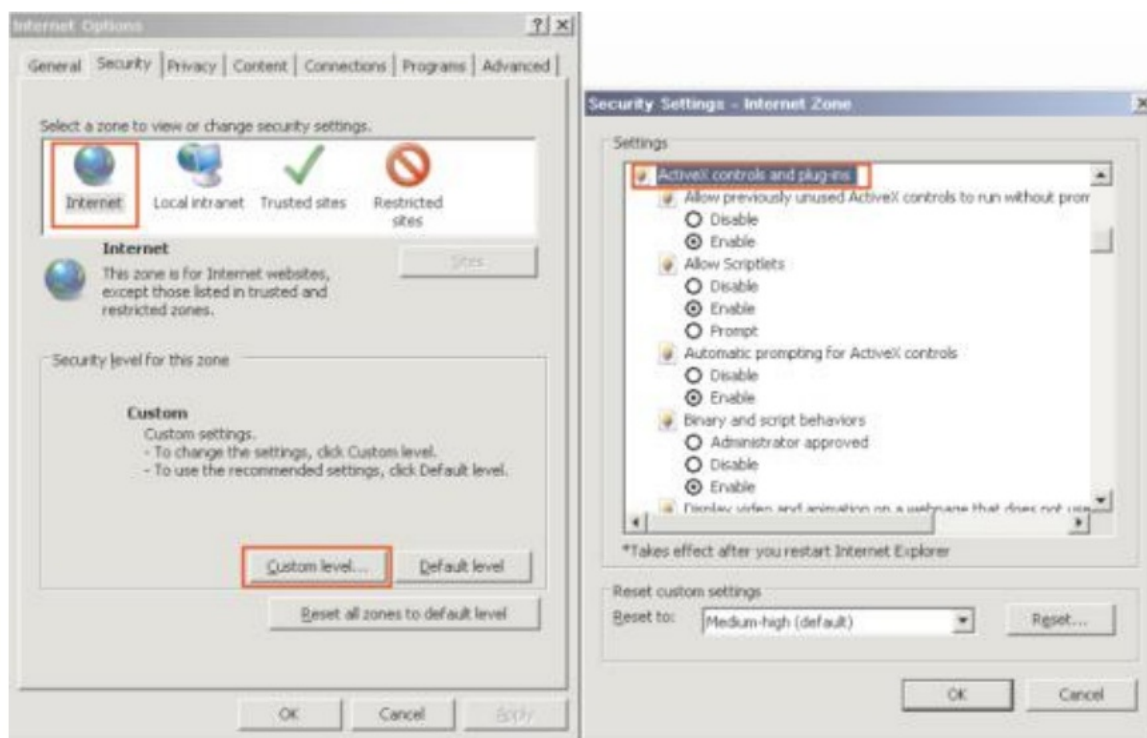
Step 1 the Internet Explorer. Choose Tools > Internet options > Security > Trusted sites > Sites, in the display dialog box, click Add, as shown in figure 4-3.

Figure 4-3 Adding a trusted site



Step 2 In the Internet Explorer, choose Tool > Internet Options ActiveX control and initialize and script ActiveX controls not marked as safe for scripting under ActiveX controls and plug-ins to Enable, as shown in figure 4-4.

Figure 4-4 Configuring ActiveX control and plug-in



Step 3 Download and install the player control as prompted.



NOTE

If the repair tips displayed when installing the control , please ignore the prompt, and continue the installation, the login page is displayed when the control is loaded.

To browse a real-time video, click Live Video. The Live Video page is displayed, as shown in figure 4-5.

Figure 4-5 Live Video



4.4 Two-way audio



NOTE

Partial camera do not support two-way audio, this section do not apply.

4.4.1 Camera → PC

Connection:

Step 1 Connect microphone to audio input interface of camera.

Step 2 Connect speaker to the PC audio output interface.

Step 3 Log in camera Web, click  to turn on two-way audio.

4.4.2 PC → Camera

Step 1 Connect microphone to PC audio input interface.

Step 2 Connect speaker to camera audio out interface.

Step 3 Log in camera Web, click  to turn on two-way audio.

4.5 Alarm Configuration



NOTE

Partial cameras do not support alarm, this section do not apply.

Alarm input and Alarm output connection:


Step 1 Connect alarm input device to Alarm IN0 and Alarm COM0 of multi-head cable.

Step 2 Connect alarm output device to Alarm OUT1 and Alarm COM1 of multi-head cable, alarm output interface can choose the valid signal.

Step 3 Log in Web, Choose Configuration>Alarm>Alarm Output, set the parameters as shown in figure 4-6.

Step 4 Choose Configuration>Alarm>I/O Alarm Linkage, enable the I/O Alarm and set the parameters of Schedule Setting.

Figure 4-6 Alarm

 Alarm Output

Alarm Output

1

Name

Valid Signal

Close

Alarm Output Mode

Switch Mode

Alarm Time(ms)(0:Continuous)

0

Manual control

Start


Stop

Refresh

Apply

HIKVISION®
NO:101-100-0492-01
Issue: 1.0

Documents / Resources

	HIKVISION AN-IPV xUAR Series Vandal Dome Network Camera [pdf] User Guide AN-IPV xUAR Series Vandal Dome Network Camera, AN-IPV xUAR Series, Vandal Dome Network Camera, Dome Network Camera, Network Camera, Camera
---	--