



HIKVISION AC18Pro IP Camera App User Manual

[Home](#) » [Hikvision](#) » HIKVISION AC18Pro IP Camera App User Manual

Contents [[hide](#)]

- 1 [HIKVISION AC18Pro IP Camera App](#)
- 2 [Add a camera by scanning a QR code](#)
- 3 [Add cameras via LAN connection](#)
- 4 [Add and manage cameras using PC software](#)
- 5 [Preview and control cameras with AC18PRO PC software](#)
- 6 [IP Camera interface definition diagram](#)
- 7 [Documents / Resources](#)
 - 7.1 [References](#)
- 8 [Related Posts](#)

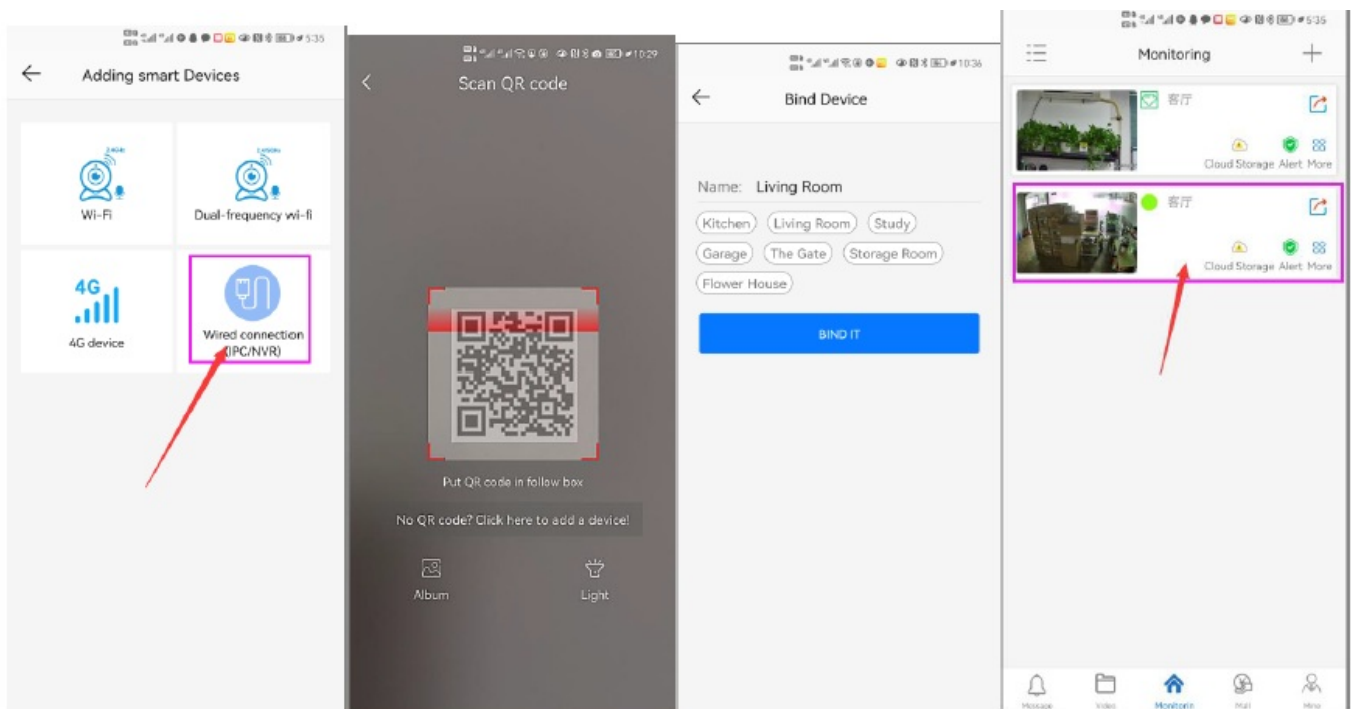


HIKVISION AC18Pro IP Camera App



Please go google play or the Apple store downloads a mobile APP, the name is AC18Pro, and install it on your mobile phone The first time you run the APP, you need to register an account. You can use your email or mobile phone number to register an account, and then use the registered account to log in to the APP.

Add a camera by scanning a QR code



Please connect the ethernet cable to your switch/router and connect the power adapter. Select “Wired connection camera”, as shown in Figure 1, enter the interface of scanning the QR code to add a camera, and point the mobile phone at the QR code on the camera body to scan (as shown in Figure 2), after scanning is successful, please provide your Customize a name for the camera, and click “BIND IT” to complete the addition.

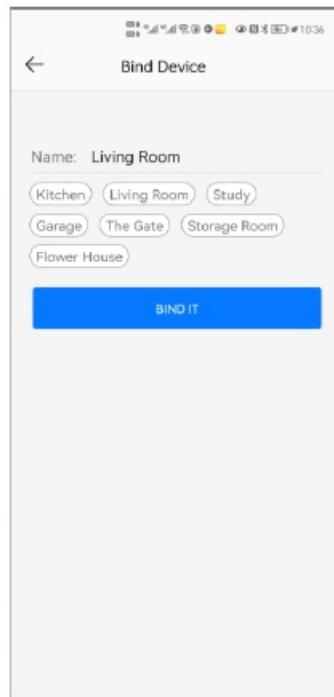
Add cameras via LAN connection



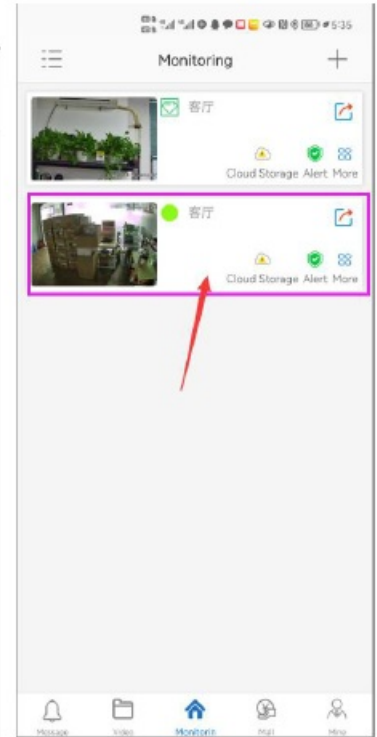
4



5



6



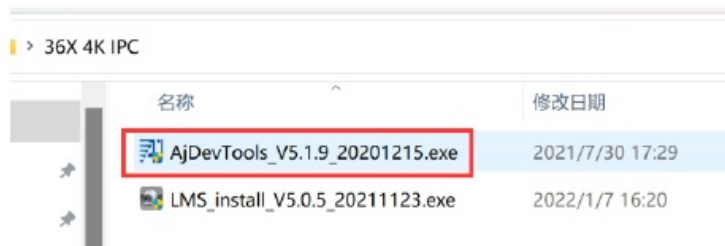
7

If the QR code cannot be found on the camera, you can click “Click here to add a device” to add the camera through the LAN search (as shown in Figure 4), enter the search page, and the APP will automatically search for the camera, as shown in Figure 5 display, and then click the camera to complete the addition.

Add and manage cameras using PC software

Install the search tool on your PC

1. Install Search tool “[AjDevTools.exe](#)” and complete the installation



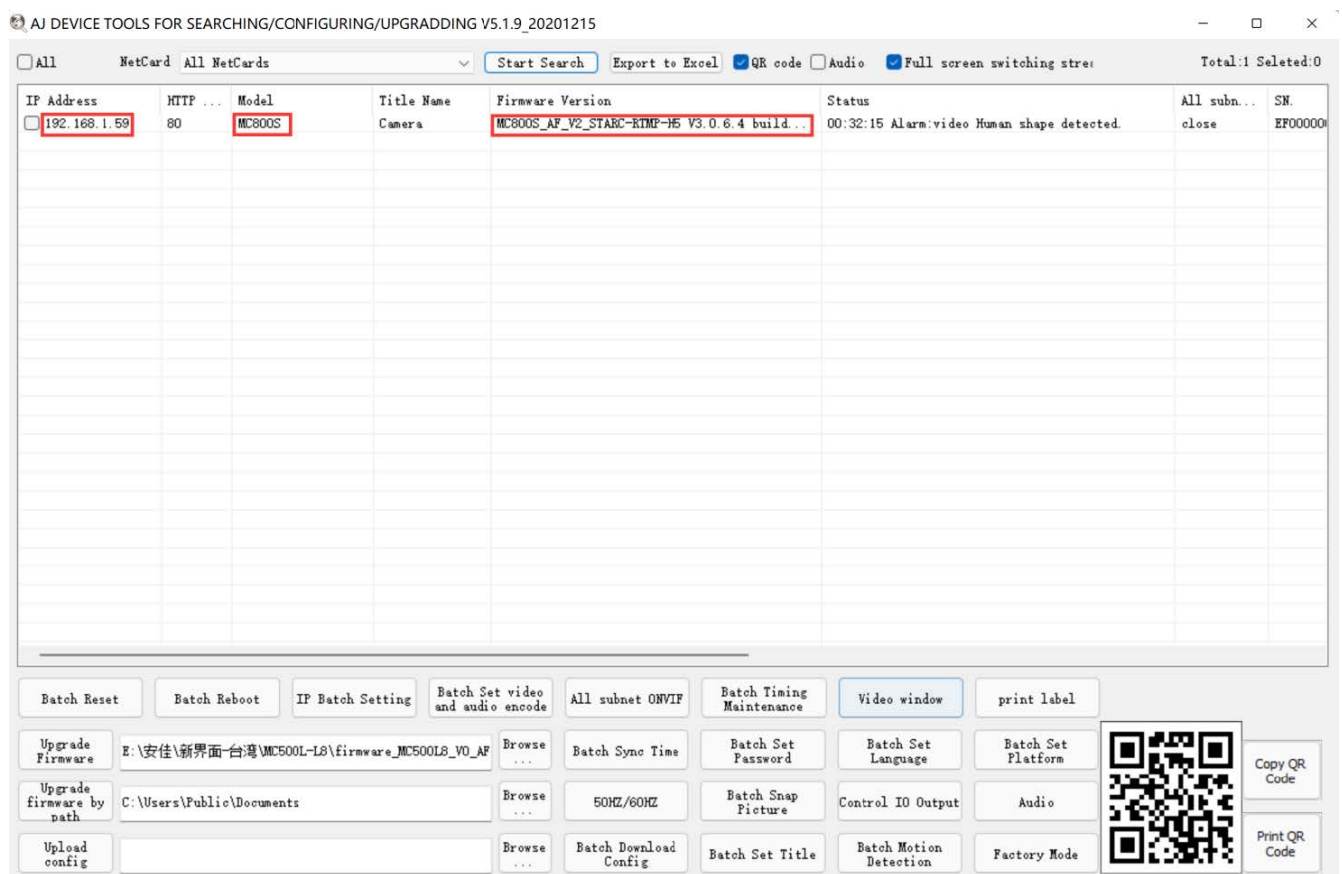
1



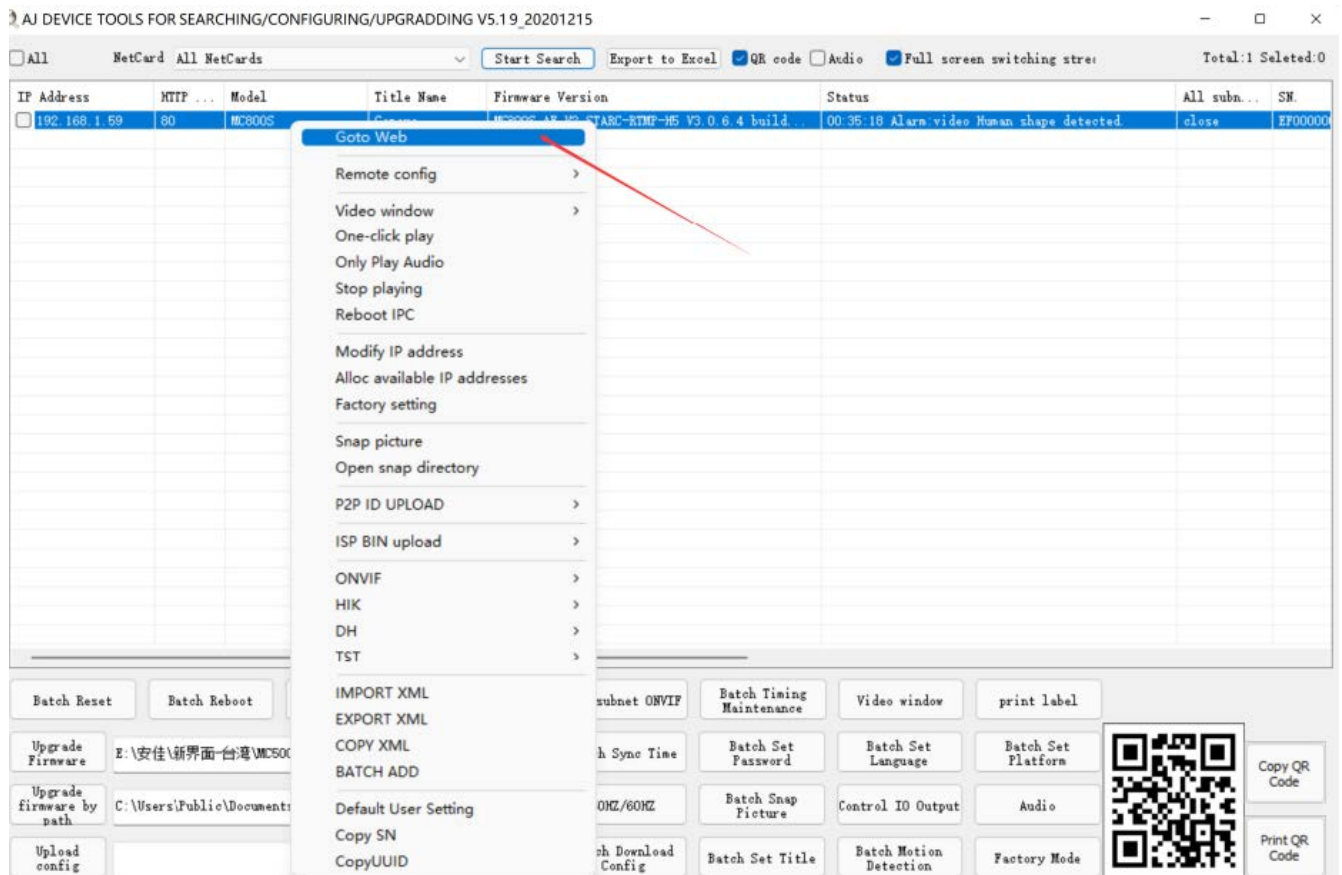
2



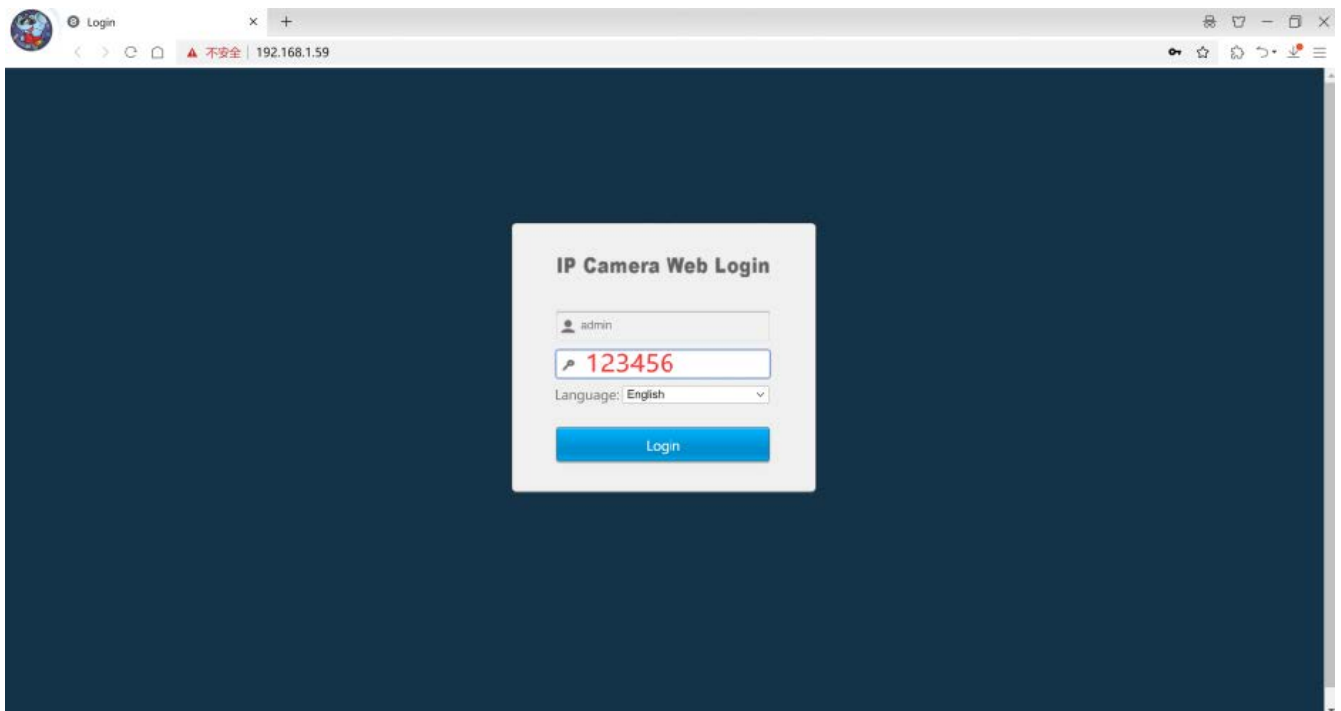
2. Run the software, as shown below



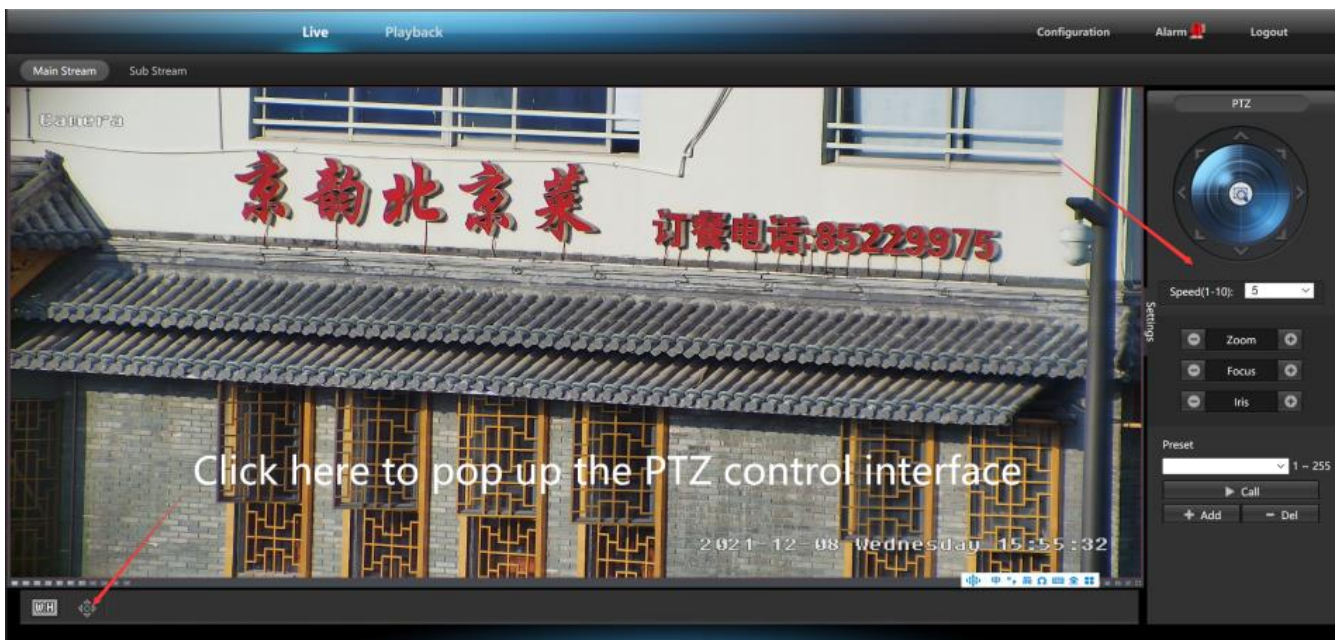
3. Here you can modify the IP address of the camera, and upgrade the firmware and other parameter settings. Right-click on the IP address to open the camera with a browser, as shown in the figure below.



4. Enter the browser login interface, login user name: admin, password: 123456, as shown in the following figure (if the browser prompts you to download and install the plug-in, please download and install it):



5. Then click login

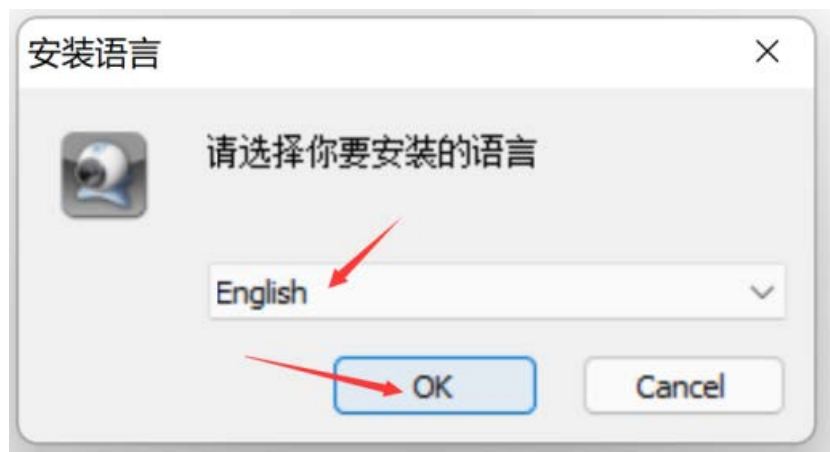


Use PC software to search and add cameras

1. Install the LMS computer software.

36X 4K IPC

名称	修改日期
AjDevTools_V5.1.9_20201215.exe	2021/7/30 17:29
LMS_install_V5.0.5_20211123.exe	2022/1/7 16:20

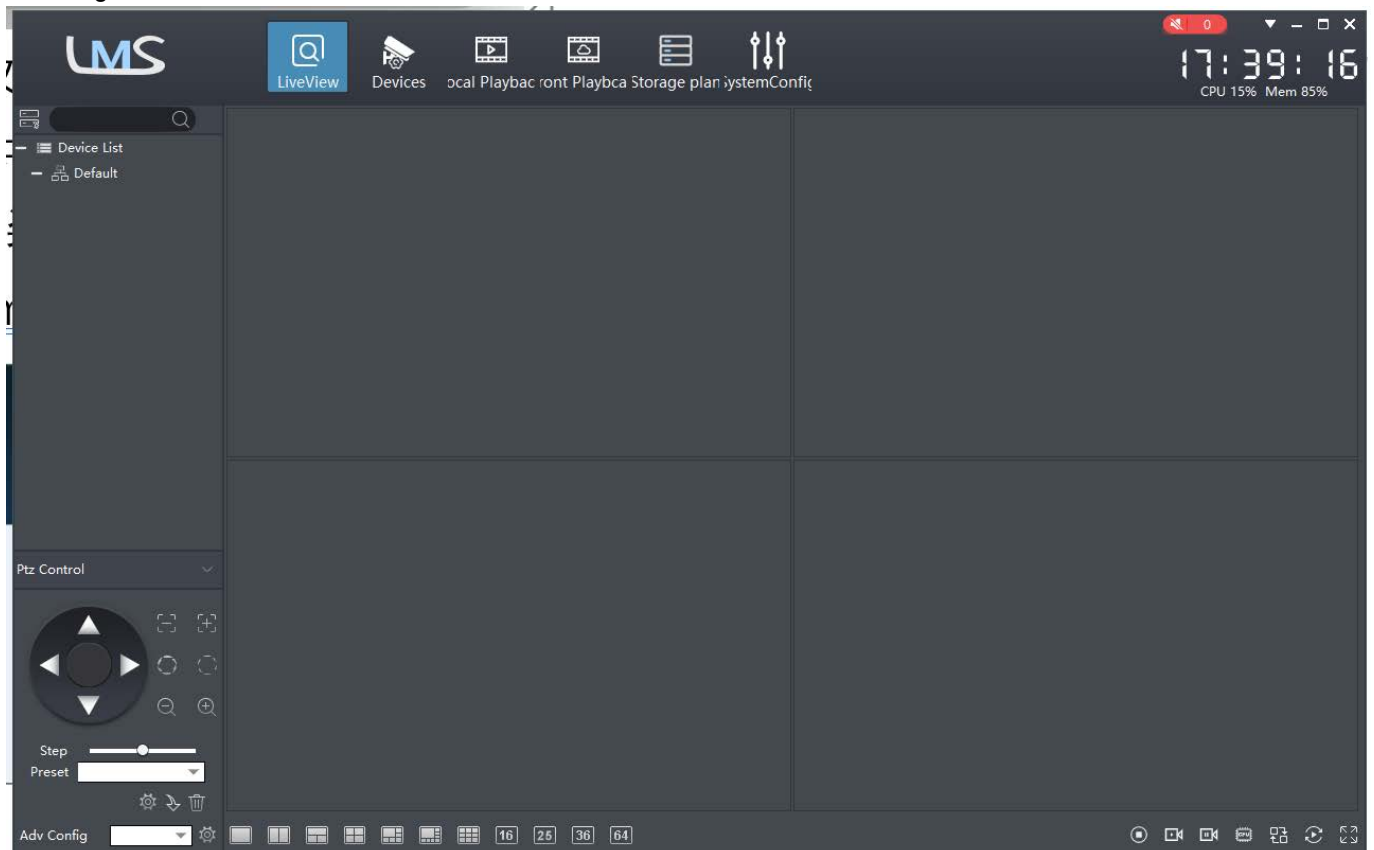


The software supports English, Simplified Chinese, and Traditional Chinese (if you want to support other languages, we can provide you with language packs, you can translate into the language you want, and then we can provide you with software customization)

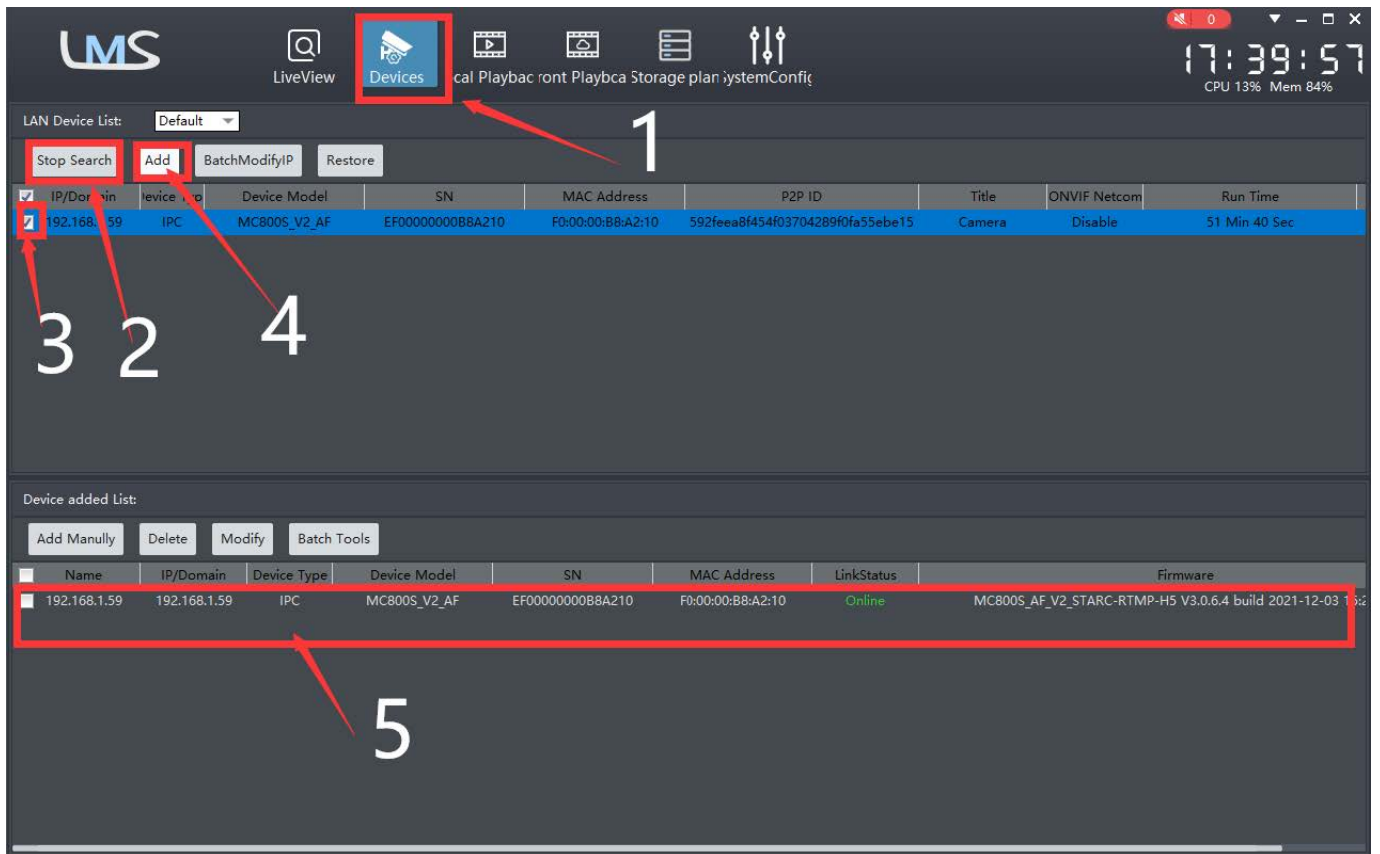
2. Follow the prompts to complete the software installation
3. Run the LMS software: user: admin,password:123456



Click log in to the software



Search and add cameras.



Click "Devices"> Start Search">click 3 add > successfully added

Then click "LiveView" go to



Double click on the IP address and the video will automatically appear in the video box on the right. [3],

Preview and control cameras with AC18PRO PC software

1. Double click the AC18PRO software in the directory, follow the prompts to complete the installation of the camera and then run the camera

Manual

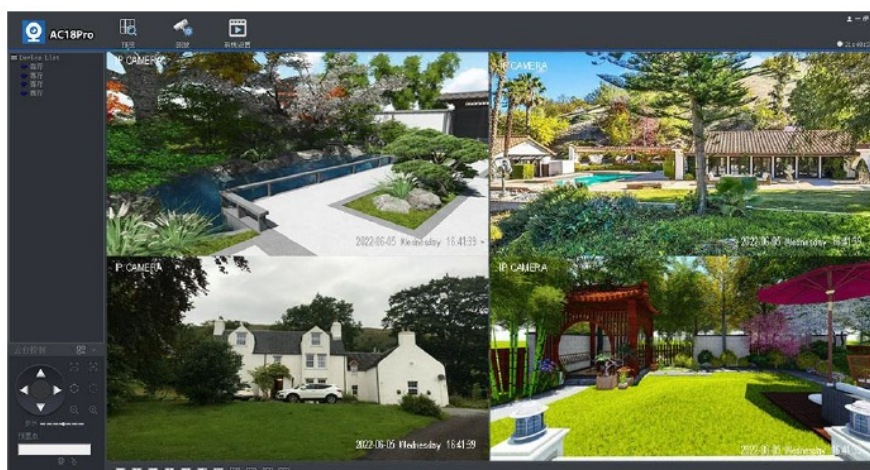
AC18Pro_install_V1.0.0_20220408.exe

AjDevTools_V5.1.9_20201215.exe

LMS_install_V5.0.5_20211123.exe

2. run, and login AC18PRO

The username and password here are the accounts you registered for the first time on your mobile phone. Click the login button and go to AC18PRO You will see all the cameras under your account, you can preview the cameras and view the video playback in this way



IP Camera interface definition diagram

Interface definition diagram



CN1:LAN 1:TX-, 2:TX+, 3:RX-, 4:RX+
CN2:Power+Visca+UART 1:TXD0,2:RXD0,3:TXD1 UART1 (Pleco-d,9600),4:RXD1 UART2, 5: GND,6:DC12V
CN3:AF 1:GND,2:AF_TX,3:AF_RX,4:speaker_EN(output3.3V when audio out work)
CN4:Power+LAN 1:DC12V,2:GND,3:RX-,4:RX+,5:TX-,6:TX+,7:LED1+,8:LED2+
CN5:Fill light control port 1:White LED(Output 3.3VWhen the camera night image becomes color) 2:IR LED(Output 3.3VWhen the camera night image becomes B/W,) 3:GND
CN6:Reset button 1:Reset,2:GND
CN7:USB 1,USB3.3V,2:USB_D+,3:USB_D-,4:GND
CN8:Audio 1,GND,2:Audio out,3:Audio in,4:GND

- **About RTSP:** The RTSP URL format for YU CHENG series cameras is as follows (assuming the Camera IP is 192.168.0.123):
- **Main stream:** <rtsp://admin:123456@192.168.0.123/stream0>
- **Substream:** <rtsp://admin:123456@192.168.0.123/stream1> For the RTSP URL above, if audio is enabled, the

stream will contain both video and audio. If you only need video or audio data, use the following URL: Main stream pure video: <rtsp://admin:123456@192.168.0.123/video1>

- **Substream pure video:** <rtsp://admin:123456@192.168.0.123/video2> Audio only: <rtsp://admin:123456@192.168.0.123/audio> About the protocol specification of the camera sent to the external
- **MCU to control the lighting:** Data is sent through
- **CN2:** TXD1 UART1 (Pleco-d, 9600)

About the protocol specification of the camera sent to the external MCU to control the lighting Data is sent through CN2: TXD1 UART1 (Pleco-d, 9600)

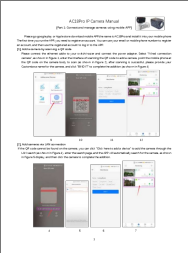
FF	01	83	01	IRCUT status	IRCUT model	IR LED PWM	white LEDPWM	CHECKSUM
----	----	----	----	--------------	-------------	------------	--------------	----------

- **IRCUT status:** 0: color, 1:B/W
- **IRCUT model:**0 Automatic control mode (day and night determined by SENSOR)
 1. Day and night mode, control according to the time period
 2. External control mode (this mode is the traditional camera control mode, the MCU sends the VISCA command to control the camera IRCUT mode, in this mode, the camera will not send the command to the MCU)
 3. Manual control mode

Light control PWM:

- **IR LED PWM:** Infrared LED power 0-100 decimal, 0: close infrared LED, 100 maximum infrared LED brightness
- **White LED PWM:** White LED power 0-100, decimal, 0 closes white LED, 100 maximum white LED brightness
- **For example:**
 - IRCUT Auto Mode (Daytime): FF 01 83 01 00 00 11 00 96
 - IRCUT Auto Mode (Night – Pure Infrared) : FF 01 83 01 01 00 C6 00 4C
 - IRCUT automatic mode (pure white light at night): FF 01 83 01 00 00 E5 00 6A
 - IRCUT Auto Mode (Dual Light Night Infrared): FF 01 83 01 01 00 ED 00 73
 - IRCUT automatic mode (dual light night white light) : FF 01 83 01 00 00 19 00 9E
 - Manual modes (daytime) : FF 01 83 01 00 03 07 00 8F
 - Manual mode (pure infrared at night): FF 01 83 01 01 03 EC 00 75

Documents / Resources

	HIKVISION AC18Pro IP Camera App [pdf] User Manual AC18Pro IP Camera App, AC18Pro, IP Camera App
---	--

References

- [🌐 yucvision.com/upload/file/LMS_install_V5.0.5_20211123.exe](https://yucvision.com/upload/file/LMS_install_V5.0.5_20211123.exe)

[Manuals+](#), [home](#) [privacy](#)