



HIKOKI R36DB Cordless Cleaner User Manual

[Home](#) » [HiKOKI](#) » HIKOKI R36DB Cordless Cleaner User Manual 

Contents

- [1 HIKOKI R36DB Cordless Cleaner](#)
- [2 Product Information](#)
- [3 Product Usage Instructions](#)
- [4 Cordless Cleaner](#)
- [5 Easy and Quick Dust Disposal](#)
- [6 Specifications](#)
- [7 Optional Accessory](#)
- [8 Documents / Resources](#)

HiKOKI

HIKOKI R36DB Cordless Cleaner



Product Information

Cordless Cleaner 36V R 36DB The Cordless Cleaner 36V R 36DB is a highly efficient and powerful vacuum cleaner designed for easy and convenient cleaning. It features a new floor nozzle with a moving blade for smooth operation on carpets and rugs. The nozzle has front and rear intake ports to effectively suck in dirt in both forward and backward movements. With a powerful brushless motor and three suction power modes, this vacuum cleaner offers excellent cleaning performance. It also comes with a high-performance filter that captures more fine dust than conventional models. The dust case is designed for easy dust removal, eliminating the need for disposable bags. With an LED light for better visibility and a long runtime per charge, this cordless cleaner provides a powerful and efficient cleaning experience.

Specifications

- LED Light for better vision while vacuuming
- Extremely Powerful Suction with 155W power and 3.9 Suction Work Rate
- **Runtime per Charge:** High – Approx. 15min, Mid – Approx. 30min, Low – Approx. 60min
- **Noise Level:** 72dB
- **Dust Case Capacity:** 560mL
- **Overall Length:** 476mm
- **Weight:** 1.6kg (with BSL36A18 battery)

Standard Accessories

- Battery (BSL36A18)
- Charger (UC18YSL3)
- Flooring Nozzle A
- Crevice Nozzle
- Extension Pipe (with Nozzle Holder)
- Battery Cover

Optional Accessories

- High Performance Filter (Code No.376509)
- Flexible Hose (Code No.375371)
- Rack Brush (Code No.375371)
- Angle Joint (Code No.375371)
- Round Brush (Code No.375372)
- Extension Pipe (Short) – 413mm (Code No.375373)
- Extension Pipe (Short) – 233mm (Code No.375375)

Distributed by: [Distributor Name]

Product Usage Instructions

1. **Smooth Movement:** The optimal design of the floor nozzle with a moving blade offers smooth operation even on carpets and rugs.
2. **Improved Cleaning Efficiency:** The floor nozzle with optimally positioned wheels avoids snagging on the edges of carpets and rugs.
3. **Suction Power Modes:** The suction power can be switched between 3 modes: HIGH, MID, and LOW. Use the switch panel to select the desired mode.
4. **Dust Disposal:** To empty the dust case, follow these steps:
 1. Turn the dust case back and forth a couple of times.
 2. All dust will be collected in the vacuum cleaner. Empty the dust case.
5. **Battery Charging:** Use the provided charger (UC18YSL3) to charge the battery. Follow the instructions in the charger manual for proper charging.
6. **Filter Replacement:** If the filter needs to be replaced, use the optional High Performance Filter (Code No.376509) for better filtration efficiency.
7. **Optional Accessories:** The optional accessories can be used with the vacuum cleaner to enhance its functionality. Refer to the product manual for instructions on using each accessory.

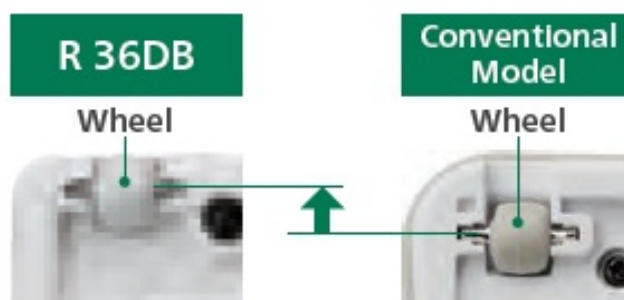
New Floor Nozzle

Smooth Movement

The optimal design of the floor nozzle with a moving blade offers smooth operation even on carpets and rugs.

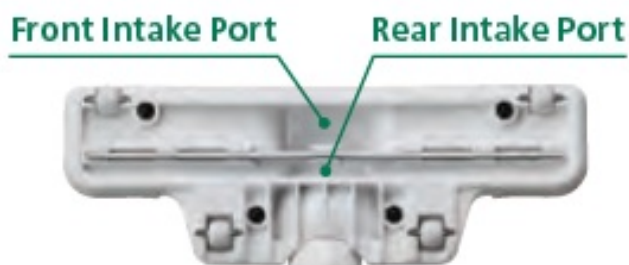
Easy to Go Over Carpets and Rugs

The floor nozzle with optimally positioned wheels avoids snagging on the edges of carpets and rugs.



Improved Cleaning Efficiency

The new nozzle has front and rear intake ports and they suck in the dirt when moving forward and backward respectively.



Cordless Cleaner

Filter Cleaning Indicator

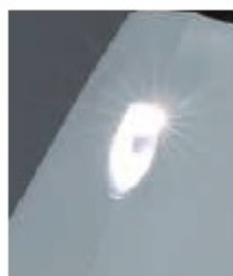
Switch Panel

The suction power can be switched between 3 modes: 3 HIGH, 2 MID and 1 LOW.



LED Light

For better vision while vacuuming.



Powerful Suction. Low Noise¹ at 72dB ².

Approx.
2x More^{*1}
Durability
73,000RPM
Brushless Motor



Extremely Powerful

155W Suction Power

Suction Work Rate^{*3}
In High Mode

36V R 36DB
New Model

18V R 18DB
Current Model

155W

40W

Approx.
3.9x
More



Approx.
36%
More^{*1}
Conventional Model

Runtime per Charge3 with BSL36A18 Battery

- **High:** Approx. 15min
- **Mid:** Approx. 30min
- **Low:** Approx. 60min

Highly Efficient (High Performance Filter)

A high-performance fabric filter offers a filtration efficiency 36% greater than a conventional model thus capturing more fine dust.

Easy and Quick Dust Disposal

The dust case is designed for easy dust removal and eliminates the need for disposable bags



Specifications

Model		R36DB
Battery Voltage		36V
Dust Case Capacity		560mL
Suction Work Rate	High	155W
	Mid	65W
	Low	35W
Noise Level*2		72dB
Continuous Operating Time*3	High	Approx. 15min
	Mid	Approx. 30min
	Low	Approx. 60min
Overall Length		476mm 1,008mm (with Extension Pipe and Floor Nozzle)
Weight*5		1.6kg (with BSL36A18) 1.9kg (with BSL36B18)*6
Standard Accessories*7		Battery (BSL36A18), Charger (UC18YSL3), Flooring Nozzle A, Crevice Nozzle, Extension Pipe (with Nozzle Holder), Battery Cover

Optional Accessory

High Performance Filter



Code No.376509

Rack Brush*8



Code No.375371

Round Brush*8



Code No.375372

Flexible Hose*8



413mm
Code No.375373

Angle Joint*8 *9



40°
Code No.375374

Extension Pipe (Short)*8




233mm
Code No.375375

1. Vs. HiKOKI R18DA cordless cleaner.
2. The noise level is shown for reference purposes and varies according to the measurement system used.
3. The values shown are for reference purposes and may vary according to the state of the battery and other conditions.
4. The filtration efficiency was tested with 20g talc powder. Using the filter does not guarantee complete removal of dust particles and viruses.
5. Weight: according to EPTA-Procedure 01/2014.
6. Sold separately.
7. Standard accessories vary by country or area.
8. The color may differ from the vacuum cleaner.

9. Use it with an extension pipe or another accessory.

Documents / Resources

	<p>HIKOKI R36DB Cordless Cleaner [pdf] User Manual R36DB Cordless Cleaner, R36DB, Cordless Cleaner, Cleaner</p>
---	---