



**TECH M Series
Thermal Imaging
Camera**



HIKMICROTECH M Series Thermal Imaging Camera Instruction Manual

[Home](#) » [HIKMICROTECH](#) » HIKMICROTECH M Series Thermal Imaging Camera Instruction Manual 

Contents

- [1 HIKMICROTECH M Series Thermal Imaging Camera](#)
- [2 Product Usage Instructions](#)
- [3 PRODUCT INFORMATION](#)
- [4 Interchangeable Battery System](#)
- [5 APPLICATIONS](#)
- [6 WHAT'S IN THE BOX](#)
- [7 OPTIONAL ACCESSORIES](#)
- [8 SPECIFICATION](#)
- [9 Documents / Resources](#)
 - [9.1 References](#)
- [10 Related Posts](#)



HIKMICROTECH M Series Thermal Imaging Camera



Specifications:

- **Model No:** M11, M11W, M20W, M20, M30, M60
- **IR Resolution:** 256 x 192 to 640 x 480 pixels
- **Focal Length:** 3.6mm to 15mm
- **FOV:** Varies based on model
- **Focus:** Manual focus and fixed focus options available
- **Visual Camera:** Included
- **Min. Focusing Distance:** 0.1m to 0.5m
- **Object Temp. Range:** Varies based on model
- **Wi-Fi:** 802.11 b/g/n (2.4 GHz and 5 GHz)
- **Storage:** Removable SD Card (16 GB or 64 GB), Max. Storage Capacity: 128 GB
- **Battery Operating Time:** Approx. 6 hours x 2 (varies based on model)

Product Usage Instructions

M Series Overview:

The M Series thermal imaging cameras provide advanced features for detailed analysis in various applications such as electrical, HVAC, mechanical inspection, building insulation checks, and more.

Focusing Options:

The M series offers both manual focus and fixed focus options.

The manual focus is ideal for critical inspections where specific component focusing is necessary, while the fixed focus wide FOV is suitable for scanning walls, floors, and large-scale items.

Level & Span Adjustment:

Utilize the 1-Tap Level & Span feature to quickly highlight areas of interest in the image by narrowing the span with a single tap on the 3.5 LCD touchscreen. This enhances image contrast and helps identify potential issues instantly.

Battery System:

The interchangeable battery system includes 2 Li-ion batteries and a dual bay charger, providing up to 12 hours of operation. Stay powered up for extended inspections without interruptions.

On-Camera Analysis:

Benefit from 17 measurement rules, 7 color alarm palettes, and 4 image modes for in-depth on-camera analysis, enhancing your inspection capabilities.

Camera Interface & Image Annotations:

Interact with the intuitive 3.5 LCD Touch Screen or use interactive buttons for easy navigation. Add voice, text, or QR code scan annotations to images for improved inspection efficiency and productivity.

FAQ:**Q: What are the primary applications of the M Series thermal imaging cameras?**

A: The M Series cameras are commonly used for checking electrical systems, underfloor heating, building insulation, and mechanical status assessments.

Q: What accessories are included with the product?

A: The product comes with a thermal imager with a wrist strap, interchangeable and rechargeable Li-ion batteries (x2), power supply for battery charger, two-bay battery charger, international use plugs (US/EU/UK/AU), USB cables, hard carrying case, calibration certificate/quick start guide, and a micro SD card (specific capacity varies by model).

Q: Is Wi-Fi connectivity available on all models?

A: Yes, Wi-Fi connectivity (802.11 b/g/n) is available on all models supporting both 2.4 GHz and 5 GHz frequencies.



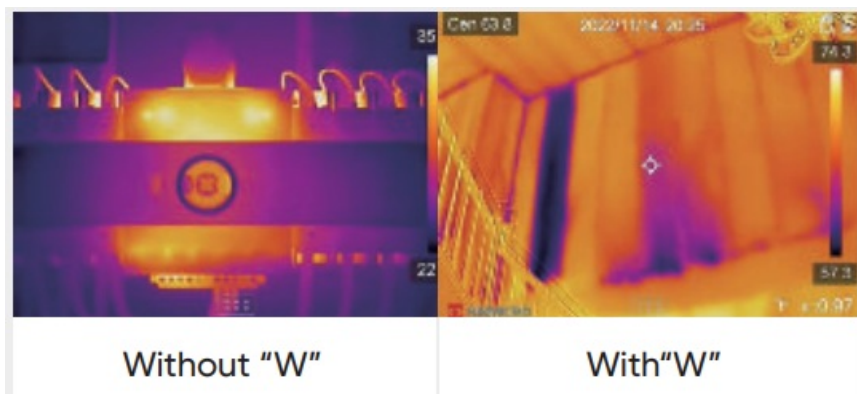
[VISIT OUR WEBSITE](#)

PRODUCT INFORMATION**M SERIES**

Advanced thermal imaging camera with full-function analysis

Multiple Product Options

M series products provide wide-angle and manual focus options. The manual focus with a larger focal length option (without "W") is ideal for electrical, HVAC, and mechanical inspection where focusing on specific components is critical. The "W" series features a fixed focus wide FOV making them ideal for scanning walls, floors, and large-scale items.

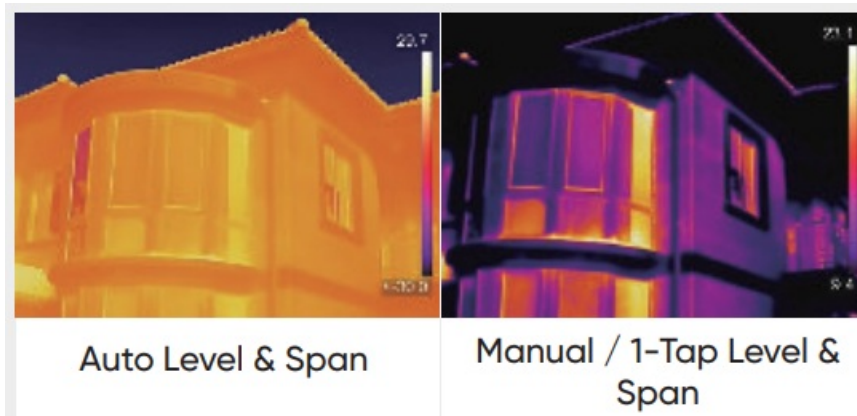


On-camera Analysis

Offers 17 measurement rules, 7 color alarm palettes and 4 image modes for powerful on-camera analysis.

1-Tap Level & Span

Quickly highlights the area of the image you are interested in by narrowing the span with one tap on the 3.5" LCD touchscreen, instantly improving image contrast and highlighting potential problems.



Camera Interface

Intuitive 3.5" LCD Touch Screen or interactive buttons to easily navigate to any function. Use either or both!

Interchangeable Battery System

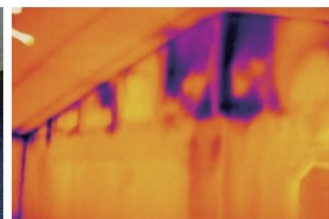
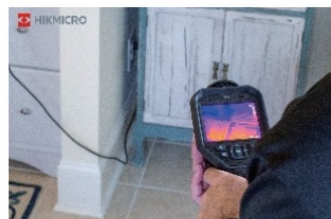
Includes 2 interchangeable Li-ion batteries and a dual bay charger to provide you with up to 12 hours of operation. You can stay powered up for even the longest inspections.



Multiple Image Annotations

Support voice, text, and QR Code Scan annotations, helping to improve inspection efficiency and productivity.

APPLICATIONS



WHAT'S IN THE BOX



- Thermal Imager with Wrist Strap
- Interchangeable and Rechargeable Li-ion Batteries (x2)
- Power Supply for Battery Charger
- Two-bay Battery Charger

- International Use Plugs (US/EU/UK/AU) for Power Supply (x4)
- USB 2.0 A to USB Type-C Cable
- Hard Carrying Case
- Calibration Certificate / Quick Start Guide
- 16GB Micro SD card(M10/M20/M20W) / 64GB Micro SD card(M30)

OPTIONAL ACCESSORIES



— Additional batteries —
E097-13-1S1P26650



— Pouch —
HM-SP01-POUCH



— Replacement Charger —
HM-5202ZC

SPECIFICATION

Model No	M11	M11W	M20W	M20	M30	M60
IR Resolution	192 × 144 (27,648 pixels)	192 × 144 (27,648 pixels)	256 × 192 (49,152 pixels)	256 × 192 (49,152 pixels)	384 × 288 (110,592 pixels)	640 × 480 (307,200 pixels)
SuperIR	192 × 144 (27,648 pixels)	192 × 144 (27,648 pixels)	512 × 384 (196,608 pixels)	512 × 384 (196,608 pixels)	768 × 576 (442,368 pixels)	1280 × 960 (1,228,800 pixels)
NETD	< 40 mK (@ 25 °C, F#=1.0)				< 35 mK (@ 25 °C, F#=1.0)	
Focal Length	6.9mm	3.6mm	3.5mm	6.9mm	10mm	15mm
FOV	18.8° × 14.1°	37.2° × 27.8°	50° × 37.2°	25° × 18.8°	37.5° × 28.5°	41.9° × 33.3°
Focus	Manual Focus	Focus Free	Focus Free	Manual Focus	Manual Focus	Manual Focus
Visual Camera	3264 × 2448 (8 MP)					
Min. Focusing Distance	0.1 m (0.33 ft)	0.5 m (1.64 ft)	0.5 m (1.64 ft)	0.1 m (0.33 ft)	0.2 m (0.33 ft)	0.3 m (0.98 ft)
Object Temp. Range	-20 °C to 550 °C (-4 °F to 1022 °F)					-20 °C to 650 °C (-4 °F to 1202 °F)
Accuracy	Max. (± 2°C/3.6°F, ± 2%), for ambient temperature 15°C to 35°C (59°F to 95°F) and object temperature above 0°C (32°F)					
Wi-Fi	802.11 b/g/n (2.4 GHz and 5 GHz)					
Storage	Default Storage: Removable SD Card (16 GB) ; Max. Storage Capacity: 128 GB				Default Storage: Removable SD Card (64 GB) ; Max. Storage Capacity: 128 GB	
Battery Operating Time	Approx. 6 hours x 2	Approx. 6 hours x 2	Approx. 6 hours x 2	Approx. 6 hours x 2	Approx. 4 hours x 2	Approx. 4 hours x 2

HIKMICRO Thermography

hikmicro_thermography

HIKMICRO Thermography


info@hikmicrotech.com

support@hikmicrotech.com



www.hikmicrotech.com

Documents / Resources

The thumbnail shows the cover of the instruction manual for the HIKMICROTECH M Series Thermal Imaging Camera. It features a black thermal camera with a red sensor area. The text 'M SERIES' is prominent at the top. Below the camera image, there are several smaller images showing different camera models and their features. The HIKMICRO logo is visible in the top left corner of the thumbnail.

[HIKMICROTECH M Series Thermal Imaging Camera](#) [pdf] Instruction Manual
M11, M11W, M20W, M20, M30, M60, M Series Thermal Imaging Camera, M Series, Thermal I
maging Camera, Imaging Camera, Camera

References

-  [HIKMICRO](#)
- [User Manual](#)

[Manuals+](#), [Privacy Policy](#)

This website is an independent publication and is neither affiliated with nor endorsed by any of the trademark owners. The "Bluetooth®" word mark and logos are registered trademarks owned by Bluetooth SIG, Inc. The "Wi-Fi®" word mark and logos are registered trademarks owned by the Wi-Fi Alliance. Any use of these marks on this website does not imply any affiliation with or endorsement.