



HiKiNS 150GPD 6 Stage Reverse Osmosis Water Filter System Instruction Manual

[Home](#) » [HiKiNS](#) » HiKiNS 150GPD 6 Stage Reverse Osmosis Water Filter System Instruction Manual 

Contents

- 1 HiKiNS 150GPD 6 Stage Reverse Osmosis Water Filter System
- 2 OVER VIEW
- 3 Install RO membrane
- 4 Clean T33
- 5 Fixing of the water purifier
- 6 Storage tank installation
- 7 CONTACT
- 8 Documents / Resources
 - 8.1 References
- 9 Related Posts

HiKiNS

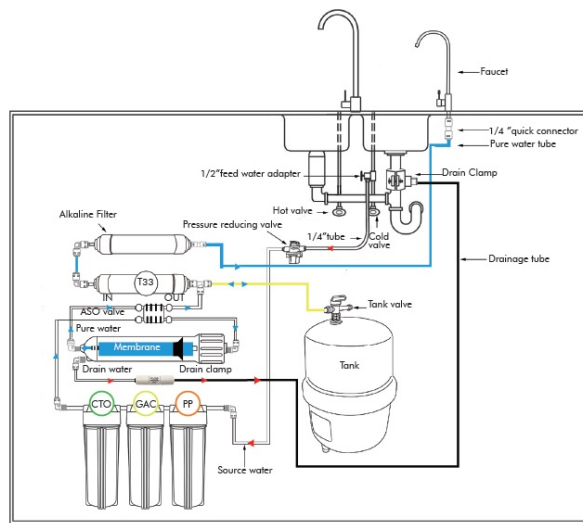
HiKiNS 150GPD 6 Stage Reverse Osmosis Water Filter System



Hydrographic chart of the purifier

The 1/4" feed water tube (white) of the feed valve will be connected to the feed connector of the purifier, the gooseneck faucet hose (blue) to the purified water connector, the storage tank tube (yellow) to the purified water connector of the storage tank, and wastewater tube (black) to purifier waste water outlet connector. Below is the whole hydrographic chart after installation, for your information:

OVER VIEW



Notes

- When any of the following situations occur, immediately disconnect the water purifier from a water source (close the 1/2" feed water adapter ball valve) and carry out repairs.
- If the water purifier tubes or related components are leaking.
- If the water purifier's related components stop working.
- If any components leak electricity.
- If there are any other anomalies or failures.
- When you go out or do not use the machine, disconnect the water purifier from a water source (close the 1/2" feed water adapter ball valve).

stage Ro Water System Installation Procedure

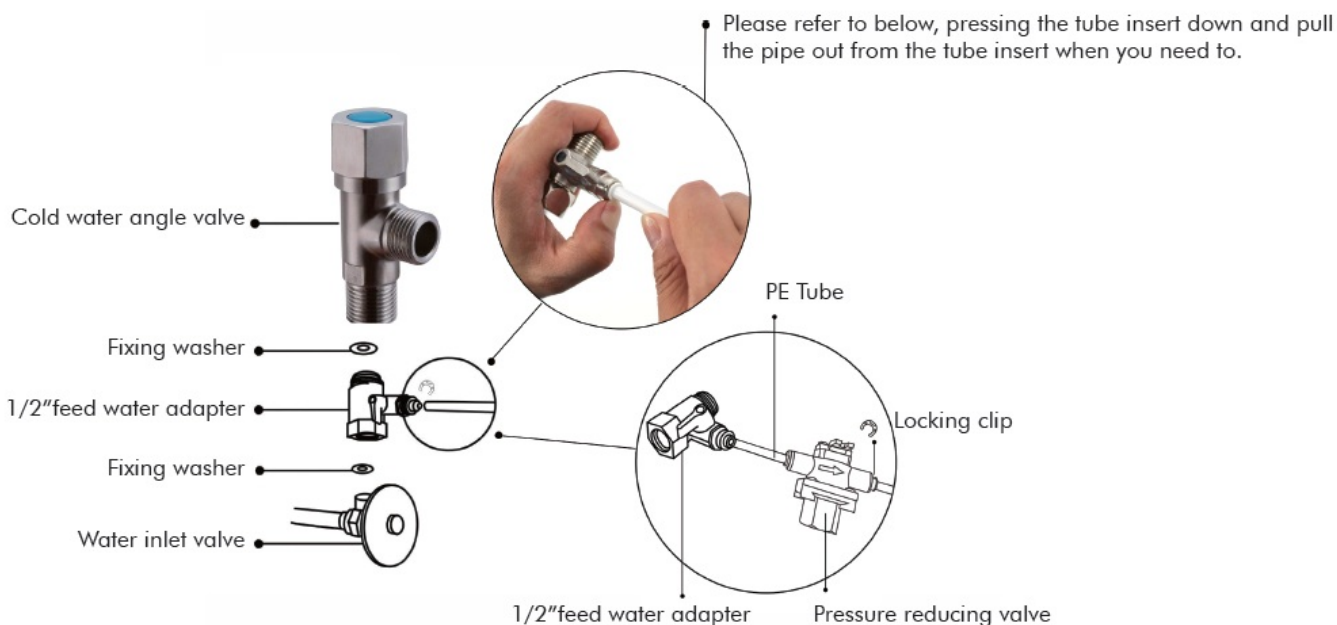
Check the packing list

- Unpack the products and check all the parts on the packing list. Make sure you have all the tools listed below before installation



.Feed water adapter installation

- Shut down the total inlet water valve. Wrap the thread ends of both the tap water faucet and feed water adapter installation with PTFE tape, connect inlet water valve, washer, feed water adapter, washer, flexible hose, washer, and water faucet one by one in order

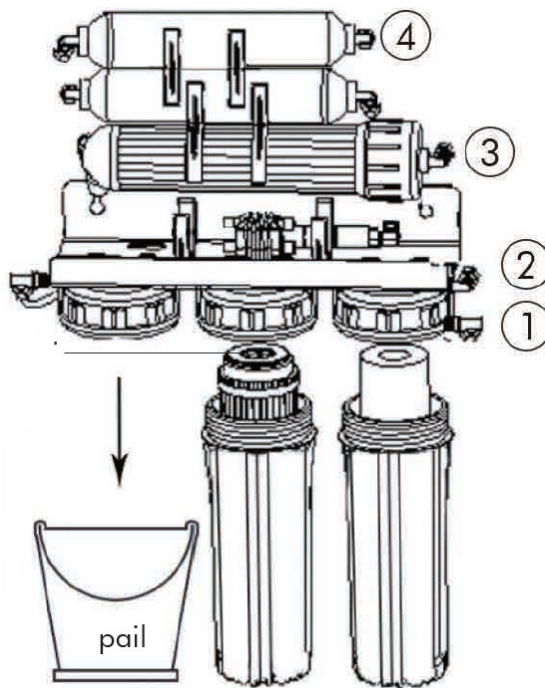


Filter washing

1. Install 1st PP and 2nd GAC filter and tighten the housings on the system head as per the Graphic.
2. Connect the reducing valve (the other end was connected to the feed water adapter by a PE pipe) to water purifier ① (white plug) with the PE pipe; Push the tube insert down and pull the plug out from the tube insert.



3. Open the tap water to wash the 1st and 2nd stage filters for around 2 mins till the outlet water is clear enough; Meanwhile, put a bucket under 3rd stage housing in case. The 2nd GAC filter head, contacting the white round rubber pad, shall be put upward

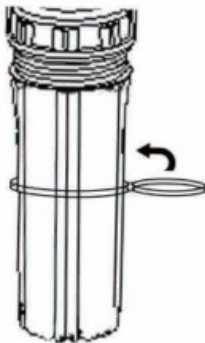


4. Close the tap water and fix the 3rd stage filter the same way.

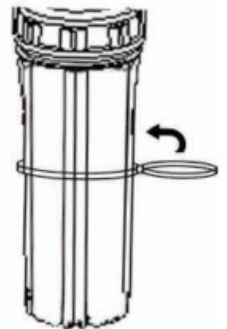
Note:

When tightening the filter housing, it is correct to press 2/3 of the threading part before screwing. Otherwise, the filter element is not aligned properly. Try again after refixing it

Error 1/3

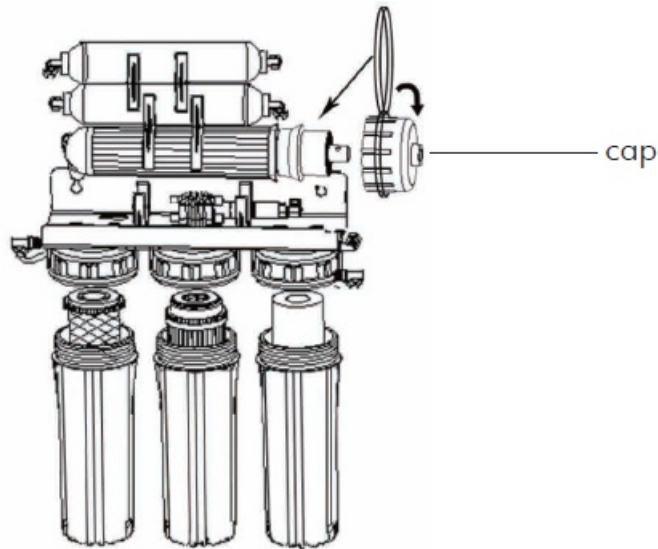


Right 2/3

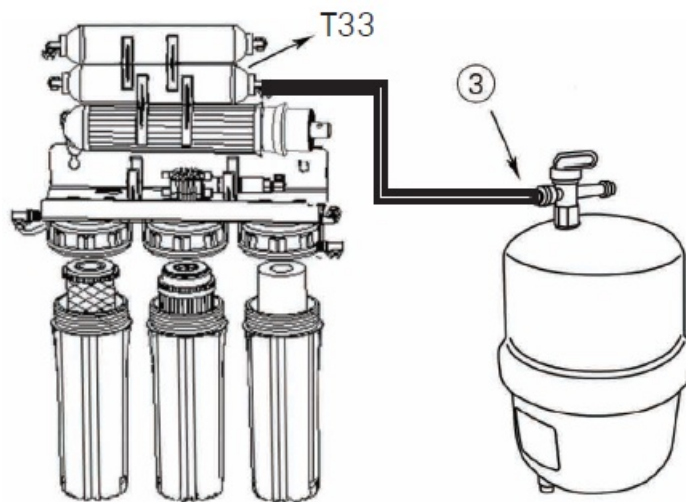


Install RO membrane

1. Open the membrane housing cap and insert the RO membrane filter, note the right direction
2. Re-tighten the cap on the RO housing.

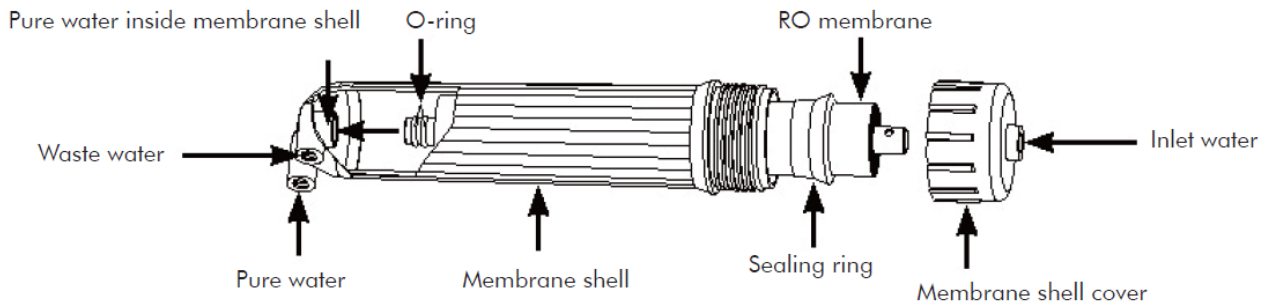


3. Allow water to come out through the pipe to the pure water tank (disconnected) ③(yellow) to drain for 5-10mins;



RO Membrane Installation notes:

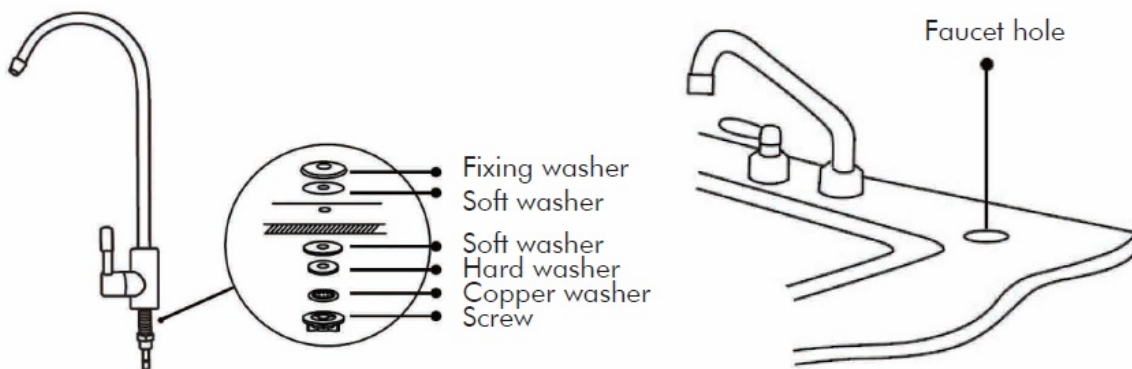
1. Before installing the RO membrane, please pay attention to the direction of the membrane;
2. Before installation, please make sure that one end of the membrane has 2 O-rings;
3. Before installation, be sure to put the end with O-ring into the purified water outlet end of the membrane housing. To install the RO membrane into the case correctly it may need a bit of force to push it. Please do not try to force it too hard when you have difficulties to push it into the case. Otherwise, there may be permanent damage to the membrane or components. Please contact us or our local service. (And note the membrane manufacturer is not responsible for damage during such installation or parts' replacement.);
4. Damage to the membrane shell and membrane elements that occurred under the situation mentioned above is not covered in the warranty.



Gooseneck faucet installation

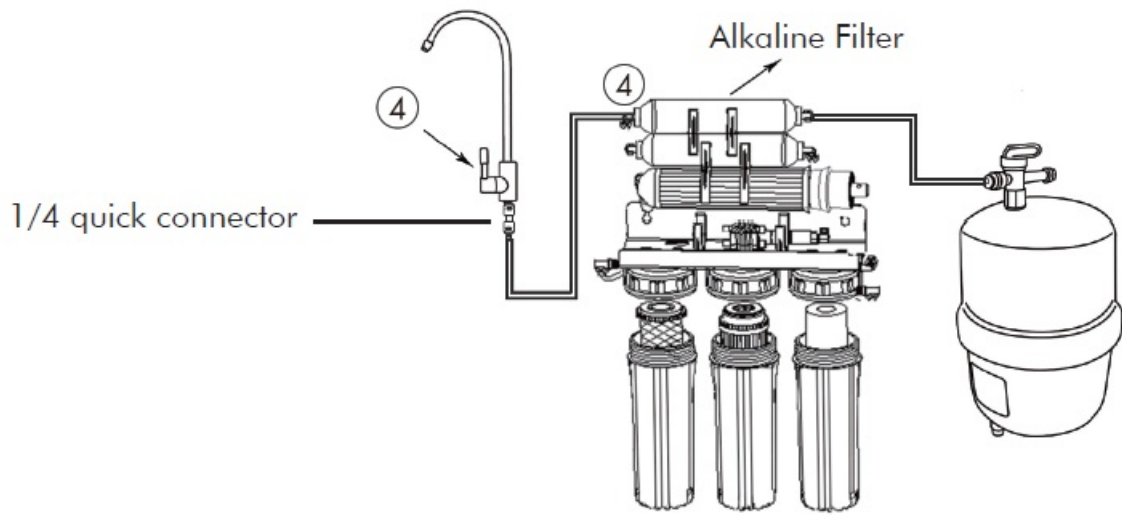
Choose a proper type, cabinet or wall mounted, to install your water faucet according to the real conditions.
Cabinet installation

1. In the counter where the faucet is to be installed drill a hole $\phi 14\text{mm}$ in an appropriate position.
2. Place the fixing washer, rubber washer onto the screw post of the faucet.
3. Insert the screw post into the hole and put the soft rubber washer, harder washer, and copper washer, screw on and fasten them all with a spanner.



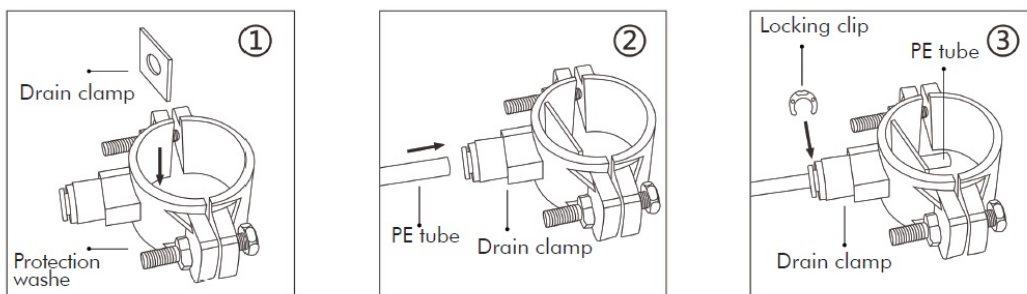
Clean T33

1. Connect the Alkaline filter ④(blue) to gooseneck faucet;
2. Shut down the gooseneck faucet)
3. Directly produce purified water into the pressure tank until it is full
4. Turn on the faucet and wash the T33 and alkaline filter 2-3 times, drop one tank of water the water comes out clean.



Waste water pipe installation

Punch a small hole in the sink drain pipe by a $\phi 6\text{mm}$ drill, take a suitable length of around 20cm of the 6mm water pipe, lay one end just inside the hole, and put some silica gel where the 6mm pipe and the drain pipe meet to prevent leakage. Tie the waste water pipe to the drain pipe with a strip.(or use a clip to guide the waste water pipe to the drilled drain pipe)



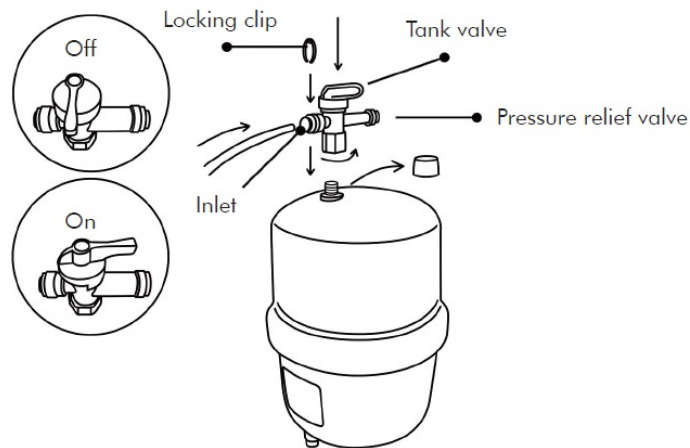
Fixing of the water purifier

If your purifier is to be mounted on the wall, please drill 2 screw holes horizontally in the proper place of the wall at a proper distance, using an impact or electric drill with an M8 drill head, and fill them with the 2 M8 expansion setscrews from the accessory box. And then hang the purifier onto the crews properly.

Storage tank installation

1. Wrap the water mouth with 4~5 rounds of PTFE or a few drops of silicon glue to prevent water leaking due to improper connection seal.
2. Turn the pressure relief valve to the water mouth at the right place, and open the blue valve switch parallel to the PE pipe.
3. Cut a piece of appropriate PE tube and connect to the pressure relief valve of the water tank properly, then clip the connecting position.

Attention that not necessary to fasten the tank valve too tight as too hard forcing may break the valve. Man-made damage to the product is not covered in our warranty.



CONTACT

- Haiqingxin (Shenzhen) Purification Technology Co., Ltd.
- service_hikins@hotmail.com
- Service tel: 86-755-27210248
- Website en.hikins.cn



Documents / Resources

	<p>HiKINS 150GPD 6 Stage Reverse Osmosis Water Filter System [pdf] Instruction Manual 150GPD 6 Stage Reverse Osmosis Water Filter System, 150GPD, 6 Stage Reverse Osmosis Water Filter System, Osmosis Water Filter System, Water Filter System, Filter System</p>
--	--

References

- en.hikins.cn
- [User Manual](#)