




## Hifuture Zone 2 Smart Watch App User Guide

[Home](#) » [HiFuture](#) » Hifuture Zone 2 Smart Watch App User Guide 

Hifuture Zone 2 Smart Watch App



## Contents

- 1 [“GloryFit” APP download](#)
- 2 [Operating Instructions](#)
- 3 [Product parameter](#)
- 4 [Packing list](#)
- 5 [Regulatory Information](#)
- 6 [Precautions](#)
- 7 [Customer Support](#)
- 8 [Documents / Resources](#)
  - 8.1 [References](#)
- 9 [Related Posts](#)

## “GloryFit” APP download

1. Scan the QR code on the left to download the APP
2. Install the APP, please register and login according to the interface prompts

- **Compatible: iOS 9.0 Above \ Android 4.4 Above.**



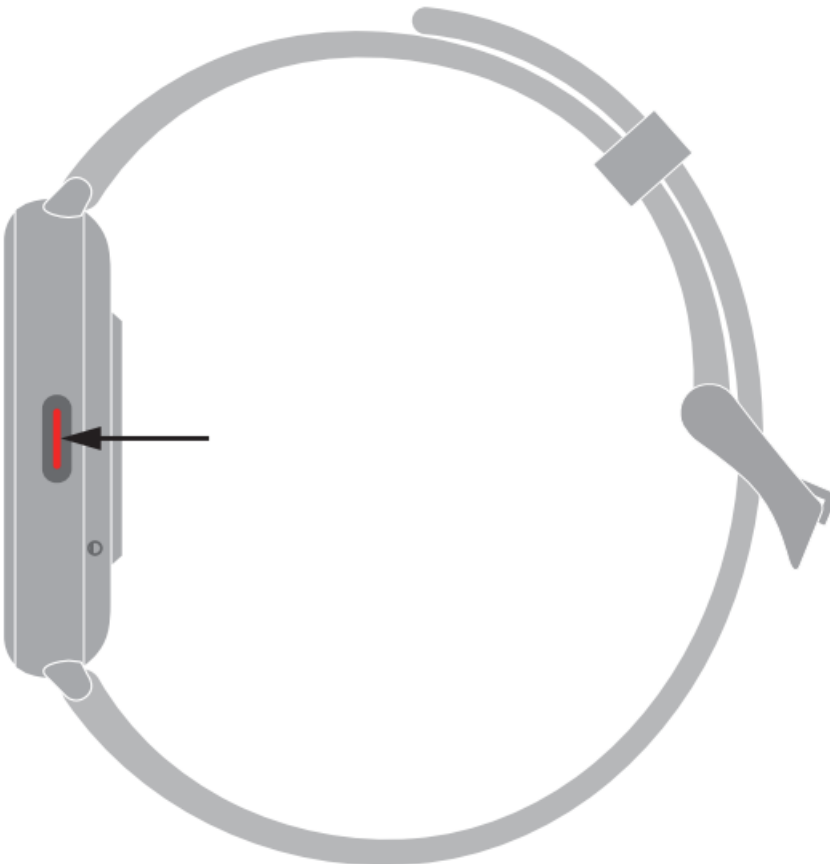
## Operating Instructions

### Power ON

Press and hold the upper button for 3 seconds to turn on

### Power OFF

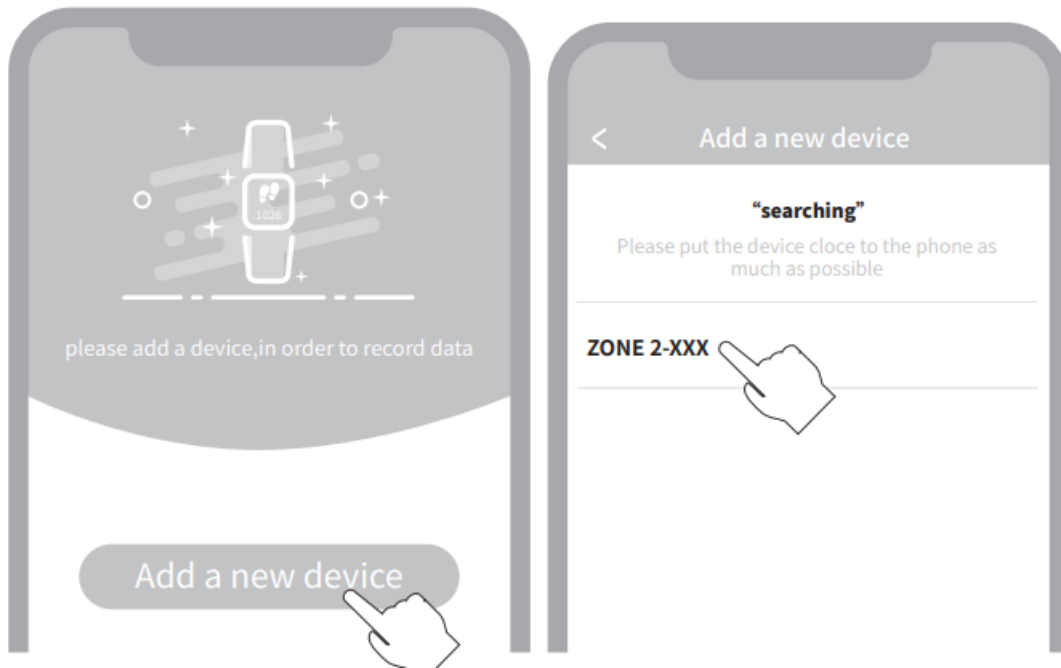
Press and hold the upper button for 3 seconds to turn on



## Set up and pair

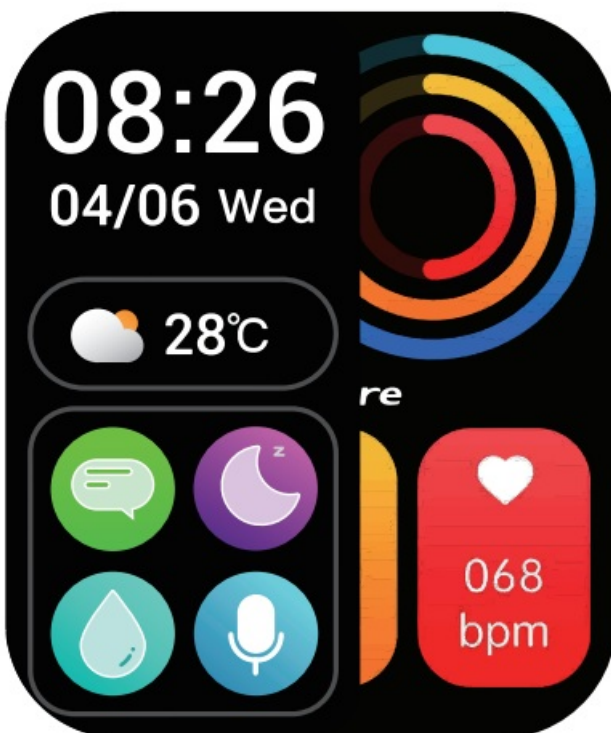
1. Turn ON the Bluetooth in your smartphone

2. Open the Glory Fit, go “Device”, “+ Add a new device”
3. Search Bluetooth device & Select the “ZONE2” for binding



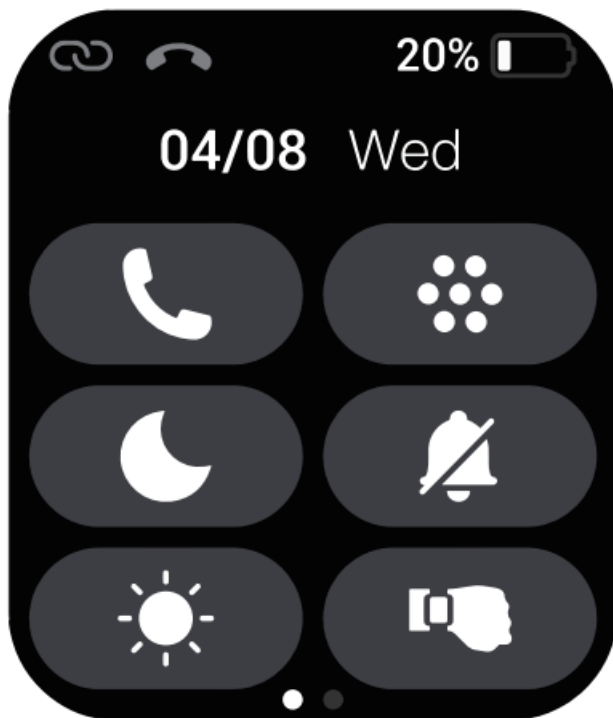
#### On home screen

- ↑ Swipe down to enter the main menu
- ↓ Swipe up to enter the messages
- ← Swipe left to enter activity data
- → Swipe right to split screen view



#### Main Menu

Phone call Sub menu style Do not disturb Mute Brightness Raise wrist setting Search Torch Battery Settings



### Sub-Menu



Exercise data can view steps, distance, calories



The phone's information will be synced to the watch

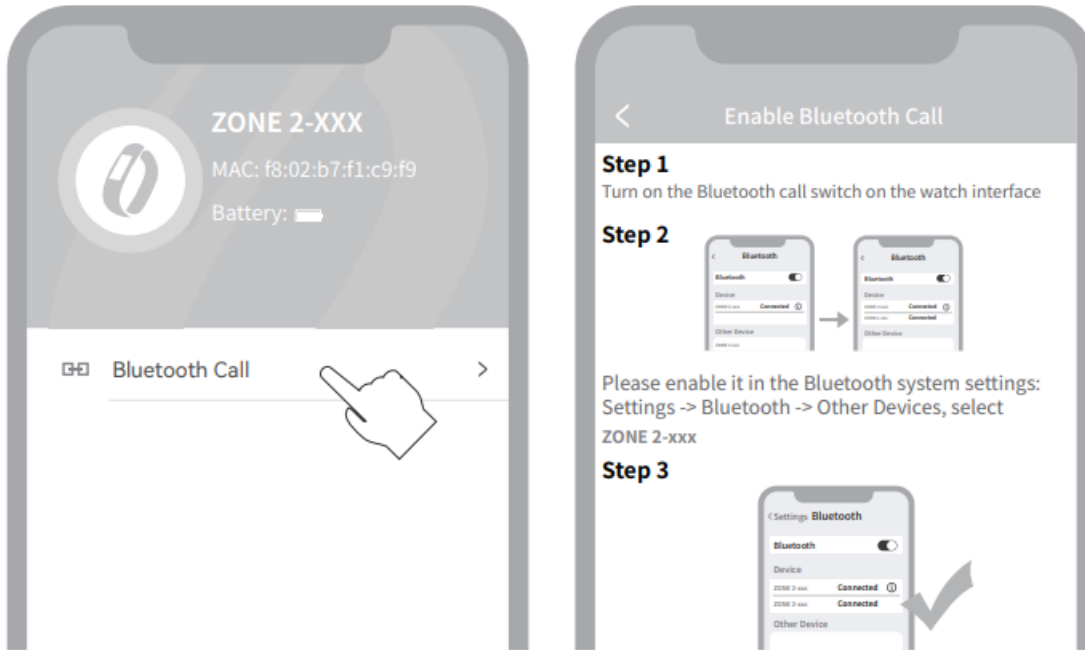


Health monitoring: heartrate, blood oxygen, sleep Enjoy more on ZONE 2 .....



### Phone Calls

1. Ensure the ZONE 2 is connecting with & nearby your phone within 10 meters .
2. ENABLE the Call functions.
3. Go call settings in the Glory fit APP.

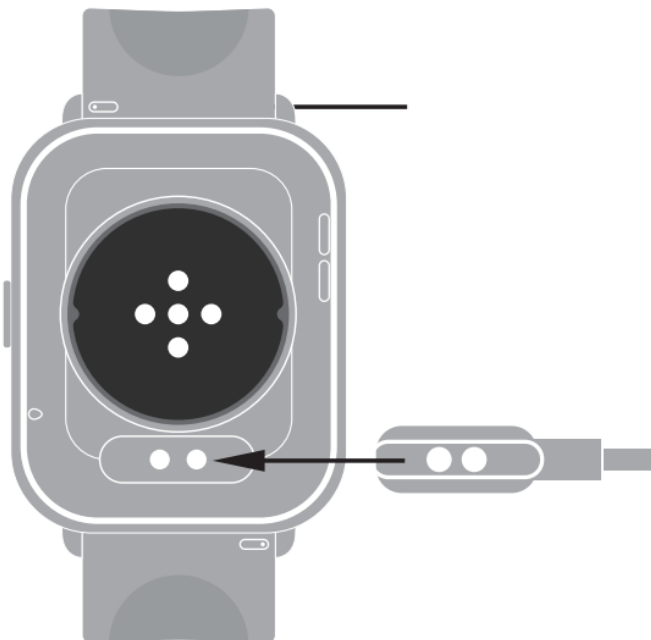


### Replace the strap

Slide the spring pin and hold it to remove the watch strap, Then connect the watch strap that needs to be replaced to the watch.

### Charging

To charge the watch, place the watch flat and make sure that the back of the two metal holes are aligned with the metal tip of the charging head.



### Product parameter

- **Waterproof rating:** IP68 Waterproof
- **Sensor:** STK8321

- **Battery capacity:** 300mAh
- **Synchronization method:** Bluetooth
- **Resolution:** 240\*286 pixels
- **Display screen:** 1.96 inch IPS Display
- **Working time:** about 7-25 days
- **Working temperature:** -10C~50°C
- **Compatible system:** iOS9.0 Above \Android 4.4 Above

## Packing list

- ZONE 2 Watch x 1
- Charging Cable x 1
- Quick Start Guide x 1

## Regulatory Information

To view regulatory information please go to Settings>About-Regulatory Information

### Note

*Please read the instructions before use:*


- The company reserves the right to modify the content of this notice without notice. According to normal circumstances, some functions are different in specific software versions.
- The product should be charged for more than 2 hours before use, but avoid prolonged charging in an unmanned environment when charging.
- Please attach the magnetic charging cable to the charging port of the bracelet automatically.
- Please use the input voltage: 5V/1A or 5V/2A charging head, with the original charging cable provided by the manufacturer.
- Before using the product, please download the login application to the mobile phone, which can use the wristband time to set personal information.








## Precautions

*Please read this manual first to ensure safe and correct use*

The data of this product is for health management reference only. Please do not use it as medical data. If any abnormal body data is found, it should be subject to hospital testing.

The waterproof rating of the watch is IP68 Waterproof. You can use it normally in life situations such as handwashing, raining, etc. Please do not put the watch in hot water, do not perform operations such as underwater pressing or deep diving, and do not expose the watch to corrosion liquid to prevent damage to the watch.

-  1.96 inch IPS Display

-  IP68 Waterproof
-  Heart Rate
-  Blood Oxygen Monitoring
-  Bluetooth Calling
-  Up to 7 Days Daily Use
-  Alarm
-  Notifications Sync

## Customer Support



<http://www.hifuturegroup.com/>

**MAKES LIFE MORE VALUABLE**

Made by Shenzhen Future Access Technology Co., Limited



Designed in USA, Assembled in China

[www.hifuturegroup.com](http://www.hifuturegroup.com)

SHENZHEN FUTURE ACCESS TECHNOLOGY CO., LIMITED.

Explore more at [www.hifuturegroup.com](http://www.hifuturegroup.com)

© All Rights Reserved

# ZONE 2



<div>ZONE 2</div> <div>USER GUIDE</div>	<div><a href="#">Hifuture Zone 2 Smart Watch App</a> [pdf] User Guide</div> <div>Ultra2, Zone 2 Smart Watch App, Zone 2, Smart Watch App, Watch App, App</div>
---	--

References

- [Hifuture Home | HiFuture Group](#)
- [User Manual](#)