



# HiFuture Ultra2 Wireless Calling SmartWatch User Manual

[Home](#) » [HiFuture](#) » HiFuture Ultra2 Wireless Calling SmartWatch User Manual 

## Contents

- [1 HiFuture Ultra2 Wireless Calling SmartWatch](#)
- [2 Product Information](#)
- [3 Product Usage Instructions](#)
- [4 Product parameter](#)
- [5 Packing list](#)
- [6 Precautions](#)
- [7 INSTALLATION](#)
- [8 FCC regulatory conformance](#)
- [9 Limited Warranty](#)
- [10 Documents / Resources](#)
  - [10.1 References](#)
- [11 Related Posts](#)

# HiFuture

## HiFuture Ultra2 Wireless Calling SmartWatch



## Product Information

## Specifications

- Waterproof rating: IP68 Waterproof
- Heart Rate Sensor: VP60
- BT chipset: RTL8763
- Battery capacity: 300mAh
- Synchronization method: Bluetooth
- Resolution: 368\*448 pixel
- Display screen: 1.78-inch AMOLED display
- Working time: about 7-25 days
- Working temperature: -10C~50
- Compatible system: IOS 10.0 or above/Android 5.0 or above

## **Packing List**

- Ultra2 Pro Watch x 1
- Charging Cable x 1
- Quick Start Guide x 1
- Watch Strap x 2

## **Regulatory Information**

To view regulatory information, please go to Settings>About-Regulatory Information.

## **Note**

- Please read the instructions before use:
  - The company reserves the right to modify the content of this notice without notice.
  - According to normal circumstances, some functions are different in specific software versions.
  - The product should be charged for more than 2 hours before use, but avoid prolonged charging in an unmanned environment when charging.
  - Please attach the magnetic charging cable to the charging port of the bracelet automatically.

## **Product Usage Instructions**

### **Power On/Off**

To power on the device, press and hold the upper button for 5 seconds. To power off the device, press and hold the upper button for 3 seconds.

### **APP Download**

1. Scan the QR code on the left to download the GloryFit APP.
2. Install the APP and register/log in according to the interface prompts.
3. Compatible with IOS 10.0 or above/Android 5.0 or above.

### **Set up and Pair**

1. Turn on the Bluetooth in your smartphone.
2. Open the GloryFit app, go to Device, then tap on “+ Add a new= device”.
3. Search for the Ultra2 Pro device and select it for binding.

## **Navigation**

On the home screen:

- Swipe down to enter Quick Menu.
- Swipe up to enter the messages.
- Swipe left to enter activity data.
- Swipe right to the Main Menu.

## **Bluetooth Call**

1. Turn on the Bluetooth call switch on the watch interface.
2. Ensure the Ultra2 Pro is connected to your phone within 10 meters.
3. Enable the Call functions in the GloryFit app.

## **Replace the Strap**

To replace the strap:

1. Slide the spring pin and hold it to remove the watch strap.
2. Connect the new watch strap to the watch.

## **Charging**

To charge the watch:

1. Place the watch flat.
2. Make sure that the back of the two metal holes are aligned with the metal tip of the charging head.

## **Frequently Asked Questions (FAQ)**

- Q: How do I download the GloryFit app?
- A: Scan the QR code provided in the user manual or search for “GloryFit” in your app store.
- Q: How long should I charge the device before use?
- A: It is recommended to charge the device for more than 2 hours before use.
- Q: How do I enable Bluetooth to call on the Ultra2 Pro?
- A: Turn on the Bluetooth call switch on the watch interface and enable it in the GloryFit app settings.
- Q: How do I replace the watch strap?
- A: Slide the spring pin and hold it to remove the current watch strap, then connect the new strap to the watch.

## **Product parameter**

- **Waterproof rating:** IP68 Waterproof
- **Heart Rate Sensor:** VP60
- **BT chipset:** RTL8763
- **Battery capacity:** 300mAh
- **Synchronization method:** Bluetooth
- **Resolution:** 368\*448 pixel
- **Display screen:** 1.78-inch AMOLED display
- **Working time:** about 7-25 days
- **Working temperature:** -10C~50°C
- **Compatible system:** IOS 10.0 or above Android 5.0 or above

## Packing list

- Ultra2 Pro Watch x 1
- Charging Cable x 1
- Quick Start Guide x 1
- Watch Strip x 2

## Regulatory Information

To view regulatory information please go to Settings-About-Regulatory Information

## Note

Please read the instructions before use:

- The company reserves the right to modify the content of this notice without notice. According to normal circumstances, some functions are different in specific software versions.
- The product should be charged for more than 2 hours before use, but avoid prolonged charging in an unmanned environment when charging.
- Please attach the magnetic charging cable to the charging port of the bracelet automatically.  
Please use the input voltage: 5V/1A or 5V/2A charging head, with the original charging
- Before using the product, please download the login application to the mobile phone, which can use the wristband time to set personal information.

## Precautions

Please read this manual first to ensure safe and correct use.

- The data of this product is for health management reference only.  
Please do not use it as medical data. If any abnormal body data is found it should be subject to hospital testing.
- The waterproof rating of the watch is IP68 Waterproof. You can use it normally in life situations such as handwashing rain, etc. Please do not put the watch in hot water do not perform operations such as underwater pressing or deep diving and do not expose the watch to corrosion liquid to prevent damage to the watch.

## Documentation & Help

Need help or more information? Please scan the QR code. You can also visit the GloryFit APP for frequently asked questions.



- 1.78-inch AMOLED display]
- IP68 Waterproof
- Heart Rate
- Blood Oxygen Monitoring
- Bluetooth Calling
- Up to 7 Days Daily Use
- Alarm
- Notifications Sync

## Follow us



<http://www.hifuturegroup.com/>

## INSTALLATION

### “GloryFit” APP download

1. Scan the QR code on the left to download the APP
2. Install the APP, please register and log in according to the interface prompts

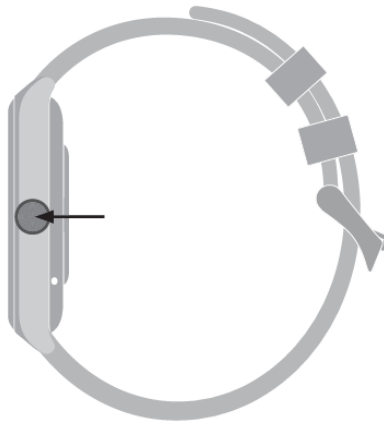
\*Compatible: IOS10.0 or above/ Andriod5.0 or above.

**Power ON**

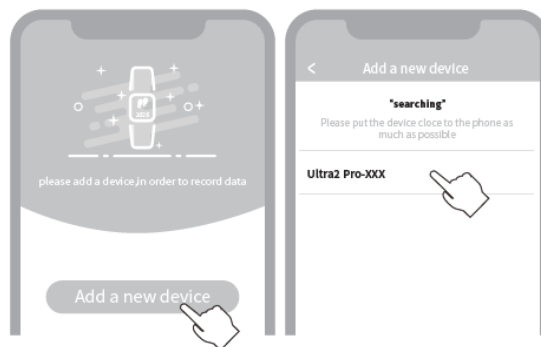
Press and hold the upper button for 5 seconds to turn on

**Power OFF**

Press and hold the upper button for 3 seconds to turn off

**Set up and pair**

1. Turn ON the Bluetooth in your smartphone
2. Open the GloryFit, go “Device”, “+ Add a new device”
3. Search Bluetooth device and select the “Ultra2 Pro” for binding

**On home screen**

- Wipe down to enter Quick Menu
- Swipe up to enter the messages
- Swipe left to enter activity data

- Swipe right to the Main Menu



## Quick Menu

- Phone call
- Sub menu style
- Do not disturb
- Mute
- Brightness
- Raise wrist setting
- Search
- Torch
- Battery
- Settings

## Main Menu

- Exercise data can view steps distance calories
- The phone's information will be synced to the watch
- Health monitoring: heart rate blood oxygen sleep
- Enjoy more on Ultra2 Pro

## Phone Calls

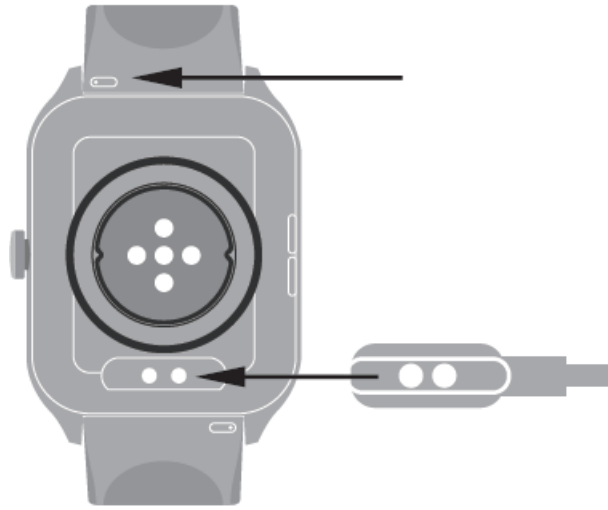
1. Ensure the Ultra2 Pro is connecting with & near your phone within 10 meters.
2. ENABLE the Call functions.
3. Go to call settings in the Gloryfit APP.

## Replace the strap

Slide the spring pin and hold it to remove the watch strap, Then connect the watch strap that needs to be replaced to the watch

## Charging

To charge the watch, place the watch flat and make sure that the back of the two metal holes are aligned with the metal tip of the charging head



## FCC regulatory conformance

This device complies with Part 15 of the FCC Rules. Operation is subject to the following two conditions:

1. This device may not cause harmful interference.
2. This device must accept any interference received, including interference that may cause undesired operation.

**NOTE:** This equipment has been tested and found to comply with the limits for a Class B digital device, pursuant to part 15 of the FCC Rules. These limits are designed to provide reasonable protection against harmful interference in a residential installation. This equipment generates uses and can radiate radio frequency energy and, if not installed and used in accordance with the instructions, may cause harmful interference to radio communications. However, there is no guarantee that interference will not occur in a particular installation. If this equipment does cause harmful interference to radio or television reception, which can be determined by turning the equipment off and on, the user is encouraged to try to correct the interference by one or more of the following measures:

- Reorient or relocate the receiving antenna.
- Increase the separation between the equipment and the receiver.
- Connect the equipment to an outlet on a circuit different from that to which the receiver is connected.
- Consult the dealer or an experienced radio/TV technician for help

**NOTE:** The manufacturer is not responsible for any radio or TV interference caused by unauthorized modifications to this equipment. Such modifications could void the user's authority to operate the equipment.

## RF Exposure

This equipment complies with FCC radiation exposure limits set forth for an uncontrolled environment.

## Warranty Card

### Customer Information:

Type \_\_\_\_\_

Customer \_\_\_\_\_

Customer Tel \_\_\_\_\_

Customer Address \_\_\_\_\_

Seller \_\_\_\_\_ (Signature)

Seller Tel \_\_\_\_\_

Purchase Date \_\_\_\_\_

Seller Address \_\_\_\_\_



Abstract

Abstract:

Date \_\_\_\_\_

Fault \_\_\_\_\_

Malfunction \_\_\_\_\_

Remarks \_\_\_\_\_


Limited Warranty

**Note:** Disassembling the device voids the warranty

**Note:** Liquid submersion voids warranty

SHENZHEN FUTURE ACCESS TECHNOLOGY CO., LIMITED. Explore more at [www.hifuturegroup.com](http://www.hifuturegroup.com) © All Rights Reserve

Documents / Resources

<div><div>反面</div><div>正面</div><div></div></div>	<div><div><a href="#">HiFuture Ultra2 Wireless Calling SmartWatch</a> [pdf] User Manual</div><div>Ultra2 Wireless Calling SmartWatch, Ultra2, Wireless Calling SmartWatch, Calling SmartWatch, SmartWatch</div></div>
---	---

References

- [Home | HiFuture Group](#)
- [User Manual](#)