



[Home](#) » [HiFuture](#) » **HiFuture EVO2 Wireless Smart Watch User Guide** 

Contents [[hide](#)]

- [1 HiFuture EVO2 Wireless Smart Watch](#)
- [2 Specifications](#)
- [3 Hi Future Fit APA P Download](#)
- [4 Set Up and Pair](#)
- [5 On the home screen](#)
- [6 Home Screen Navigation](#)
- [7 FAQs](#)
- [8 Documents / Resources](#)
 - [8.1 References](#)

HiFuture

HiFuture EVO2 Wireless Smart Watch



Specifications

- Model: EVO2
- Compatibility: iOS 9.0 and above / Android 4.4 and above
- Wireless Connection: Bluetooth
- Charging: Via a charging head with two metal holes

Multi-Language User Manual Download QR CODE Password for EVO2: HiFuture-EV2.



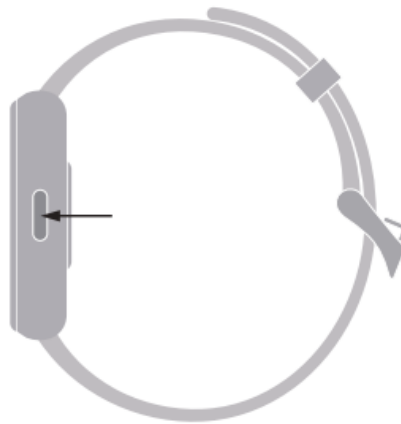
Hi Future Fit APA P Download



1. Scan the QR code on the left to download the APP.
2. Install the APP.. Please register and log in according to the interface prompts.
3. Compatible: iOS 9.0 Above / Android 4.4 above.

Power ON

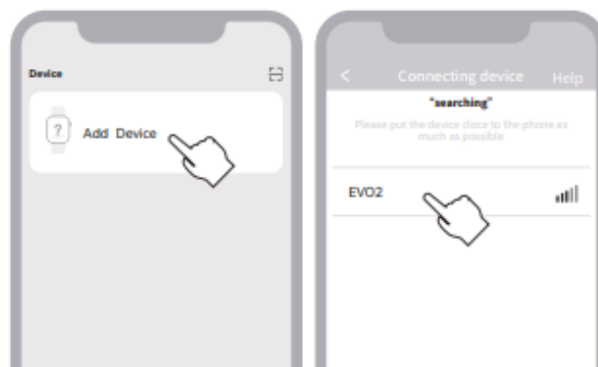
Press and hold the upper button for 3 seconds to turn on.



Power OFF

Press and hold the upper button for 3 seconds to turn off.

Set Up and Pair



1. Turn ON the wireless connection in your smartphone

2. Open the HiFuture Fit, go to Device”, “Add device”
3. Search wireless connection device & select the “EVO2” for binding

On the home screen



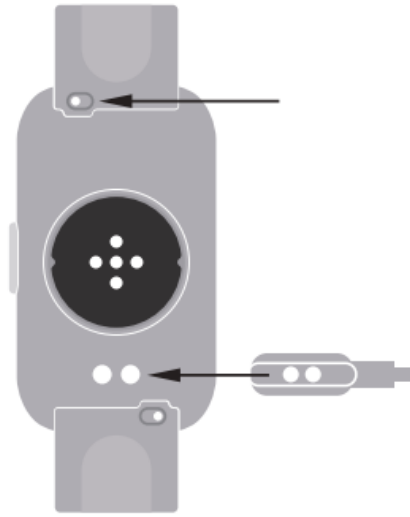
- Swipe down to enter the quick menu
- Swipe up to enter the messages
- Swipe left to enter activity data
- Swipe right to enter the main menu

Home Screen Navigation

You can navigate on the home screen as follows:

- Swipe down to enter the quick menu.
- Swipe up to access messages.
- Swipe left for activity data.
- Swipe right to access the main menu.

Replace the Strap



Slide the spring pin and hold it to remove the watch strap,.Then, connect the watch strap that needs to be replaced to the watch.

Charging

To charge the watch, place the watch flat and make sure that the back of the two metal holes is aligned with the metal tip of the charging head.

<http://www.hifuturegroup.com/>

HiFuture

Made by Shenzhen Future Access Technology Co. Limited

www.hifuturegroup.com



Made in China

SHENZHEN FUTURE ACCESS TECHNOLOGY CO., LIMITED.

Explore more at www.hifuturegroup.com. All Rights Reserved

FAQs

Q: How do I download the HiFuture Fit APP?

A: Scan the provided QR code to download the APP and follow the installation instructions.


Q: How do I power ON/OFF the device?

A: Press and hold the upper button for 3 seconds to power ON/OFF the device.

Q: How do I pair the device with my smartphone?

A: Activate Bluetooth on your smartphone, open the HiFuture Fit APP, navigate to Add device, search for EVO2, and select Navigateairing.

Documents / Resources

 EVO2 QUICK START GUIDE	HiFuture EVO2 Wireless Smart Watch [pdf] User Guide EVO2, EVO2 Wireless Smart Watch, Wireless Smart Watch, Smart Watch, Watch
--	--

References

- [User Manual](#)

 EVO2, EVO2 Wireless Smart Watch, HiFuture, Smart Watch, watch, Wireless Smart
 HiFuture Watch

Leave a comment

Your email address will not be published. Required fields are marked *

Comment *

Name

Email

Website

☐ Save my name, email, and website in this browser for the next time I comment.

Post Comment

Search:

e.g. whirlpool wrf535swhz

Search

[Manuals+](#) | [Upload](#) | [Deep Search](#) | [Privacy Policy](#) | [@manuals.plus](#) | [YouTube](#)

This website is an independent publication and is neither affiliated with nor endorsed by any of the trademark owners. The "Bluetooth®" word mark and logos are registered trademarks owned by Bluetooth SIG, Inc. The "Wi-Fi®" word mark and logos are registered trademarks owned by the Wi-Fi Alliance. Any use of these marks on this website does not imply any affiliation with or endorsement.