



HiFuture AURA Amoled Wireless Calling Bluetooth SmartWatch User Guide

[Home](#) » [HiFuture](#) » HiFuture AURA Amoled Wireless Calling Bluetooth SmartWatch User Guide 

Contents

- [1 HiFuture AURA Amoled Wireless Calling Bluetooth SmartWatch](#)
- [2 Product Information](#)
- [3 Product Usage Instructions](#)
- [4 POWER ON](#)
- [5 Set up and pair](#)
- [6 Product parameter](#)
- [7 Packing list](#)
- [8 Documents / Resources](#)
 - [8.1 References](#)
- [9 Related Posts](#)

HiFuture

HiFuture AURA Amoled Wireless Calling Bluetooth SmartWatch



Product Information

Specifications

- **Waterproof rating:** IP68 Waterproof
- **Sensor:** 3 axis G-Sensor
- **Battery capacity:** 160mAh
- **Synchronization method:** Bluetooth
- **Resolution:** 340*340 pixels
- **Display screen:** 1.04 inch AMOLED
- **Working time:** about 7 days
- **Working temperature:** -10C~50
- **Compatible system:** IOS 10.0 or above, Android 5.0 or above

Packing List

- AURA Watch x 1
- Charging Cable x 1
- Quick Start Guide x 1

Product Usage Instructions

Power On/Off and Restart

To power on the device, press and hold the button for 5 seconds.

To power off or restart the device, press and hold the button for 4 seconds.

Main Menu Navigation

1. Press the button once to enter the main menu on the watch face.

2. Quickly press the button twice to switch between different styles of the main menu.

3. Short press the button to return to the watch face.

QR Code Connect

1. Download FitCloudPro from Google Play Store or APP Store.
2. Search FitCloudPro and download the FitCloudPro App.
3. Open the Scan Function on FitCloudPro and scan the QR code on the watch to connect to your mobile device.
4. Allow the App to scan the QR code on the watch to establish the connection.

Bluetooth Pairing Request

When prompted, allow AURA to pair with your iPhone by clicking “Pair”.

APP BT Connect

When prompted, allow AURA to receive your iPhone notifications by clicking “Allow”. This will enable AURA to display the notifications received on your iPhone.

Set up and Pair

1. When prompted on both the watch and mobile device, click “Pair” to complete the phone binding request.
2. When prompted with the Bluetooth Pairing Request, click “Pair”.
3. When prompted to allow AURA to receive your phone notifications, click “Pair”.
4. After successful pairing, the Bluetooth icons on both the watch and mobile device will turn blue.

Media & Audio Switch

1. Click on the Phone icon to access the call audio and media audio settings.
2. Enable media audio to play music from your mobile device on the watch.

On Home Screen

- Swipe down: Enter the control center to view Bluetooth status, battery power, and common functions.
- Swipe up: Enter the message notification interfaces. Swipe up or down to view each message, swipe left to delete a message.
- Swipe left: Enter the function interface, including sports data, heart rate, sleep, weather, and other interfaces.
- Swipe right: Enter the split-screen interface.

Charging

To charge the watch, place the watch flat on the charging pad and ensure it is properly aligned.

Replace the Strap

To replace the watch strap, slide the spring pin and hold it to remove the current strap. Then, connect the new strap to the watch.

FAQ

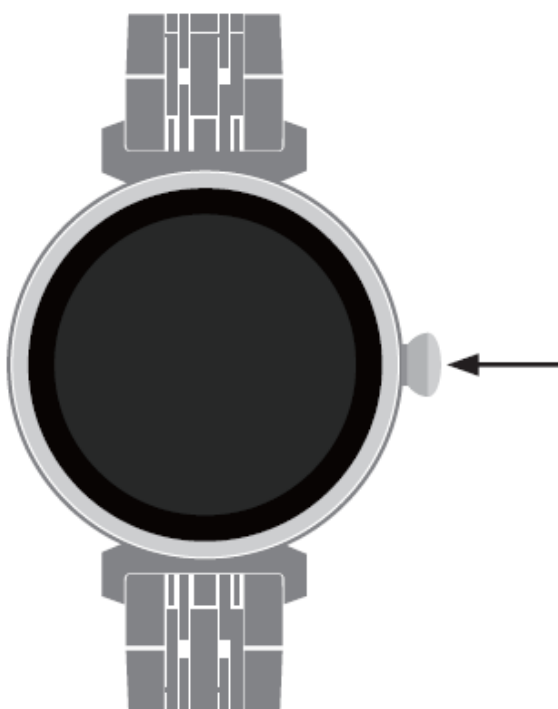
Q: How long should I charge the product before use?

A: The product should be charged for more than 2 hours before use.

Q: Can I charge the product in an unmanned environment for a long period?

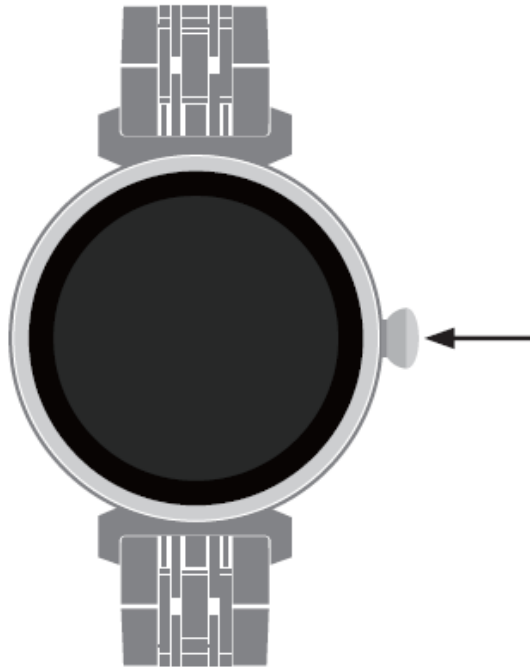
A: It is recommended to avoid prolonged charging in an unmanned environment.

POWER ON



Press and hold the button for 5 seconds to turn on.

POWER OFF/Restart



Press and hold the button for 4 seconds to turn off or restart.

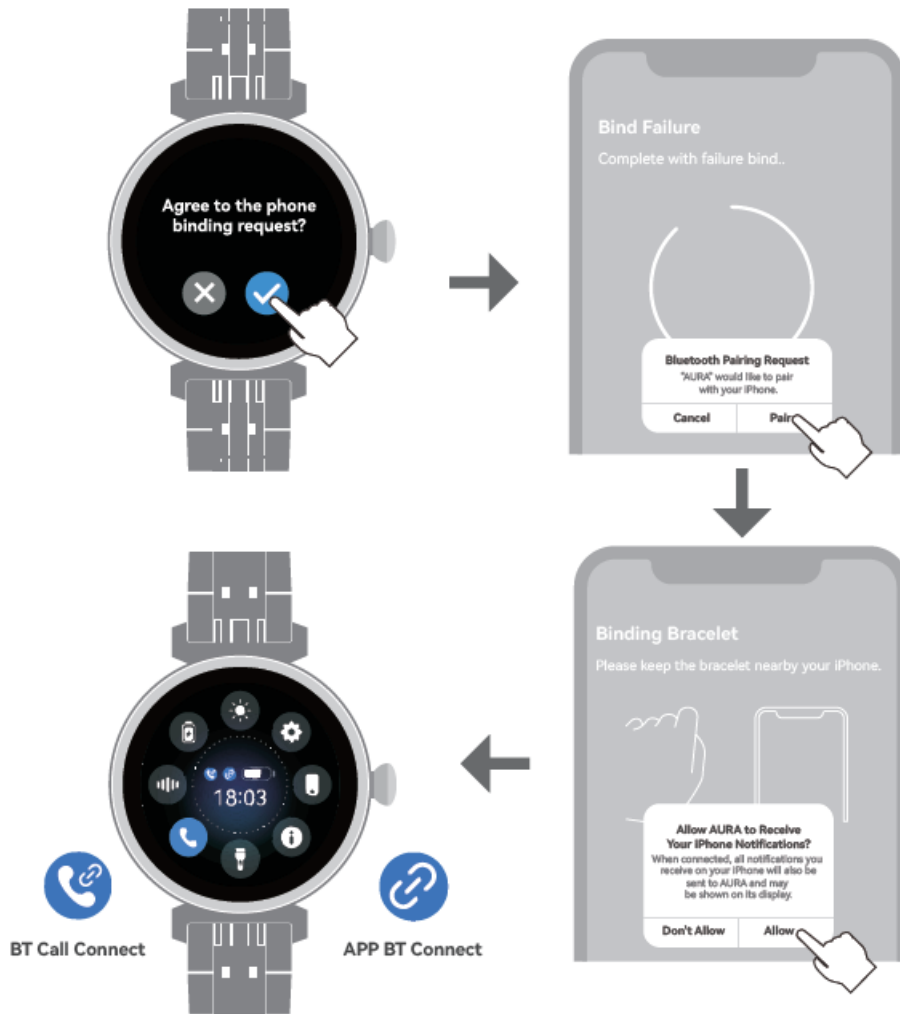
1. Press one time to enter the main menu on watch face.
2. Quickly press two times to switch the main menu to different styles.
3. Short press to return the watch face.

QR Code Connect



1. Download "FitCloudPro" from Google Play Store or APP Store.
2. Search "FitCloudPro" and Download "FitCloudPro" App.
3. Open "Scan" Function on "FitCloudPro" and scan "QR code" on watch to connect the mobile.
4. App scan "QR code" on watch to connect the mobile..

Set up and pair



1. Watch and Mobile show "phone binding request" and click "Pair".
2. "Bluetooth Pairing Request", click "Pair".
3. "Allow to receive your phone notification", click "Pair".
4. After pairing successfully, the bluetooth icons on watch and mobile become blue.



BT Call Connect



BT Call Disconnect



APP BT Connect



APP BT Disconnect

Media&Audio Switch



1. Click “Phone” icon, set the switch of call audio and media audio.
2. Open media audio and watch will play music from mobile.

Sub-Menu

Media&Audio Switch

1. Click “Phone” icon, set the switch of call audio and media audio.
2. Open media audio and watch will play music from mobile.



Exercise data can view steps, distance, calories



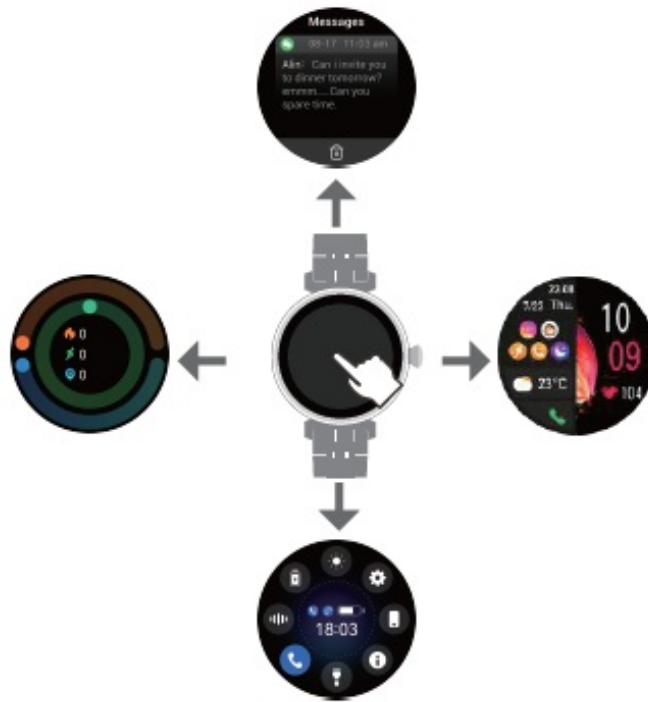
The phone's information will be synced to the watch



Health monitoring: heartrate, blood oxygen, sleep

Enjoy more on AURA

On home screen



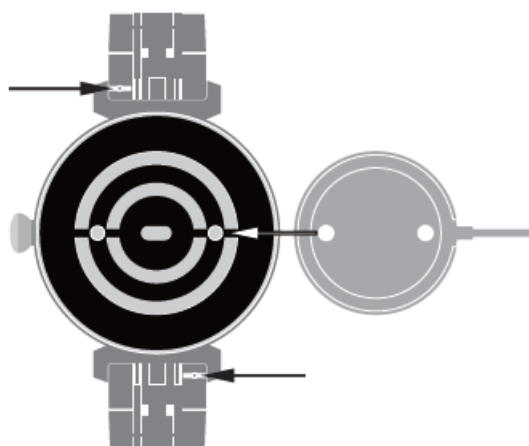
Swipe down: Enter the control center to view Bluetooth status, battery power and some common functions.

Swipe up: Enter the message notification interfaces, swipe up or down to view each message, swipe left to delete a message.

Swipe Left: Enter the function interface, including sports data, heart rate, sleep, weather and other interfaces.

Swipe Right: Enter split screen interface.

Charging



To charge the watch, place the watch flat and put it on the charging pad.

Replace the strap

Slide the spring pin and hold it to remove the watch strap, Then connect the watch strap that needs to be replaced to the watch.

Product parameter

- **Waterproof rating:** IP68 Waterproof
- **Sensor:** 3 axis G-Sensor
- **Battery capacity:** 160mAh
- **Synchronization method:** Bluetooth
- **Resolution:** 340*340 pixels
- **Display screen:** 1.04 inch AMOLED
- **Working time:** about 7 days
- **Working temperature:** -10C~50°C
- **Compatible system:** IOS 10.0 or above
- Android 5.0 or above

Packing list

- AURA Watch x 1
- Charging Cable x 1
- Quick Start Guide x 1

Regulatory Information

- To view regulatory information please go to Settings>About-Regulatory Information

Precautions

Please read this manual first to ensure safe and correct use.

- The data of this product is for health management reference only. Please do not use it as medical data.If any abnormal body data is found, it should be subject to hospital testing.
- The waterproof rating of the watch is IP68 Waterproof.

You can use it normally in life situations such as handwashing, raining, etc.Please do not put the watch in hot water, do not perform operations such as underwater pressing or deep diving, and do not expose the watch to corrosion liquid to prevent damage to the watch.

Documentation & Help



Need help or more information? Please scan QR cod. You can also visit FitCloudPro APP for frequently asked questions.



1.04 inch AMOLED display



IP68 Waterproof



Heart Rate



Blood Oxygen Monitoring



Bluetooth Calling



Up to 7 Days Daily Use



Alarm



Notifications Sync



<http://www.hifuturegroup.com/>

MAKES LIFE MORE VALUABLE

Made by ShenZhen Future Access Technology Co.,Limited



www.hifuturegroup.com Designed in USA, Assembled in China

- SHENZHEN FUTURE ACCESS TECHNOLOGY CO.,LIMITED.
- Explore more at www.hifuturegroup.com
- © All Rights Reserved

Documents / Resources

AURA	HiFuture AURA Amoled Wireless Calling Bluetooth SmartWatch [pdf] User Guide AURA, AURA Amoled Wireless Calling Bluetooth SmartWatch, Amoled Wireless Calling Bluetooth SmartWatch, Wireless Calling Bluetooth SmartWatch, Calling Bluetooth SmartWatch, Bluetooth SmartWatch, SmartWatch
------	---

References

- [Home | HiFuture Group](#)

- [User Manual](#)

[Manuals+](#), [Privacy Policy](#)