

HIFONICS PLUTO II Digital Class D 2-Channel Amplifier User Manual

[Home](#) » [HIFONICS](#) » HIFONICS PLUTO II Digital Class D 2-Channel Amplifier User Manual 

*HIFONICS PLUTO II Digital Class D 2-Channel
Amplifier User Manual*

HIFONICS
PLUTO
S E R I E S

USER'S MANUAL



DIGITAL CLASS D
2-CHANNEL AMPLIFIER

PLUTO II

Contents

- [1 SAFETY INSTRUCTIONS](#)
- [2 TECHNICAL SPECIFICATIONS](#)
- [3 DISPOSAL](#)
- [4 INTENDED USE](#)
- [5 ENGLISH MECHANICAL
INSTALLATION](#)
- [6 ELECTRICAL INTERCONNECTION](#)
 - [6.1 BEFORE CONNECTING](#)
- [7 DESCRIPTION OF OPERATION](#)
- [8 APPLICATION EXAMPLE A](#)
- [9 APPLICATION EXAMPLE B](#)
- [10 APPLICATION EXAMPLE C](#)
- [11 APPLICATION EXAMPLE D](#)
- [12 TROUBLE SHOOTING](#)
- [13 Documents / Resources](#)
- [14 Related Posts](#)

SAFETY INSTRUCTIONS

THE PURCHASED DEVICE IS ONLY SUITABLE FOR AN OPERATION WITH A 12V ON-BOARD ELECTRICAL SYSTEM OF A VEHICLE. Otherwise fire hazard, risk of injury and electric shock consists.

PLEASE DO NOT MAKE ANY OPERATION OF THE SOUND SYSTEM, WHICH DISTRACT YOU FROM A SAFE DRIVING. Do not make any procedures, which demand a longer attention. Perform these operations not until you have stopped the vehicle on a safe place. Otherwise the risk of accident consists.

ADJUST THE SOUND VOLUME TO AN APPROPRIATE LEVEL, THAT YOU ARE STILL ABLE TO HEAR EXTERIOR NOISES WHILE DRIVING. High performance sound systems in vehicles may generate the acoustic pressure of a live concert. The permanent listening to extreme loud music may cause the loss of your hearing abilities. The hearing of extreme loud music while driving may derogate your cognition of warning signals in the traffic. In the interests of the common safeness, we suggest to drive with a lower sound volume. Otherwise the risk of accident consists.

DO NOT COVER COOLING VENTS AND HEAT SINKS. Otherwise this may cause heat accumulation in the device and fire hazard consists.

DO NOT OPEN THE DEVICE. Otherwise fire hazard, risk of injury and electric shock consists. Also this may cause a loss of the warranty.

REPLACE FUSES ONLY WITH FUSE WITH THE SAME RATING. Otherwise fire hazard and risk of electric shock consists.

DO NOT USE THE DEVICE ANY LONGER, IF A MALFUNCTION OCCURS, WHICH REMAINS NOT REMEDIED. Refer in this case to the chapter TROUBLE SHOOTING. Otherwise risk of injury and the damage of the device consists. Commit the device to an authorized retailer.

INTERCONNECTION AND INSTALLATION SHOULD BE ACCOMPLISHED BY SKILLED STAFF ONLY. The interconnection and installation of this device demands technical aptitude and experience. For your own safeness, commit the interconnection and installation to your car audio retailer, where you have purchased the device.

DISCONNECT THE GROUND CONNECTION FROM THE VEHICLE'S BATTERY BEFORE INSTALLATION. Before you start with the installation of the sound system, disconnect by any means the ground supply wire from the battery, to avoid any risk of electric shock and short circuits.

CHOOSE AN APPROPRIATE LOCATION FOR THE INSTALLATION OF THE DEVICE. Look for an appropriate location for the device, which ensures a sufficient air circulation. The best places are spare wheel cavities, and open spaces in the trunk area. Less suitable are storage spaces behind the side coverings or under the car seats.

DO NOT INSTALL THE DEVICE AT LOCATIONS, WHERE IT WILL BE EXPOSED TO HIGH HUMIDITY AND DUST. Install the device at a location, where it will be protected from high humidity and dust. If humidity and dust attain inside the device, malfunctions may be caused.

MOUNT THE DEVICE AND OTHER COMPONENTS OF THE SOUND SYSTEM SUFFICIENTLY. Otherwise the device and components may get loose and act as dangerous objects, which could cause serious harm and damages in the passenger room.

ENSURE CORRECT CONNECTION OF ALL TERMINALS. Faulty connections may could cause fire hazard and lead to damages of the device.

MOUNT THE DEVICE AND OTHER COMPONENTS OF THE SOUND SYSTEM SUFFICIENTLY. Otherwise the

device and components may get loose and act as dangerous objects, which could cause serious harm and damages in the passenger room.

ENSURE NOT TO DAMAGE COMPONENTS, WIRES AND CABLES OF THE VEHICLE WHEN YOU DRILL THE MOUNTING HOLES. If you drill the mounting holes for the installation into the vehicle's chassis, ensure by any means, not to damage, block or tangent the fuel pipe, the gas tank, other wires or electrical cables.

DO NOT INSTALL AUDIO CABLES AND POWER SUPPLY WIRES TOGETHER. Ensure while installation not to lead the audio cables between the head unit and the processor together with the power supply wires on the same side of the vehicle. The best is a areal separated installation in the left and right cable channel of the vehicle. Therewith a overlap of interferences on the audio signal will be avoided. This stands also for the equipped bass-remote wire, which should be installed not together with the power supply wires, but rather with the audio signal cables.

ENSURE THAT CABLES MAY NOT CAUGHT UP IN CLOSE-BY OBJECTS. Install all the wires and cables like described on the following pages, therewith these may not hinder the driver. Cables and wires which are installed close-by the steering wheel, gear lever or the brake pedal, may caught up and cause highly dangerous situations.

DO NOT SPLICE ELECTRICAL WIRES. The electrical wires should not be bared, to provide power supply to other devices. Otherwise the load capacity of the wire may get overloaded. Use therefor a appropriate distribution block. Otherwise fire hazard and risk of electric shock consists.

DO NOT USE BOLTS AND SCREW NUTS OF THE BRAKE SYSTEM AS GROUND POINT. Never use for the installation or the ground point bolts and screw-nuts of the brake system, steering system or other security relevant components. Otherwise fire hazard consists or the driving safety will be derogated.

ENSURE NOT TO BEND OR SQUEEZE CABLES AND WIRES BY SHARP OBJECTS. Do not install cables and wires not close-by movable objects like the seat rail or may be bent or harmed by sharp and barbed edges. If you lead a wire or cable through the hole in a metal sheet, protect the insulation with a rubber grommet.

KEEP AWAY SMALL PARTS AND JACKS FROM CHILDREN. If objects like these will be swallowed, the risk of serious injuries consists. Consult promptly a medical doctor, if a child swallowed a small object.



TECHNICAL SPECIFICATIONS

Model	PLUTO II
Channels	2
Circuit	Digital Class D
OUTPUT POWER RMS @ 14.4 V Watts @ 4 Ohms Watts @ 2 Ohms Watts @ 4 Ohms bridged	2 x 100 2 x 160 1 x 320
Loudspeaker Impedance	2 - 8 Ohms
Frequency Range -3dB	4 - 38000 Hz
Damping Factor	> 100
Signal-to-Noise Ratio	105 dB
THD+N	< 0,007 %
Input Sensitivity	4,6 - 0,18 V
Filter Crossover Modes High Pass Filter Low Pass Filter	Full - HP - LP/BP 15 - 500 Hz 50 - 5000 Hz
Start-stop capability	> 7 V
High Level Inputs with EPS	Yes
RCA Low Level Inputs & Outputs	Yes (via Wire Harness)
Auto Turn On	Yes
Fuse Rating	1 x 25 A
Dimensions	115 x 35 x 127 mm

All Specifications are subject to change

DISPOSAL



If you have to dispose the device, please note that no electronic devices may be disposed in the household waste. Dispose the device in a suitable recycling facility in accordance with local waste regulations. If necessary, consult your local authority or your dealer.

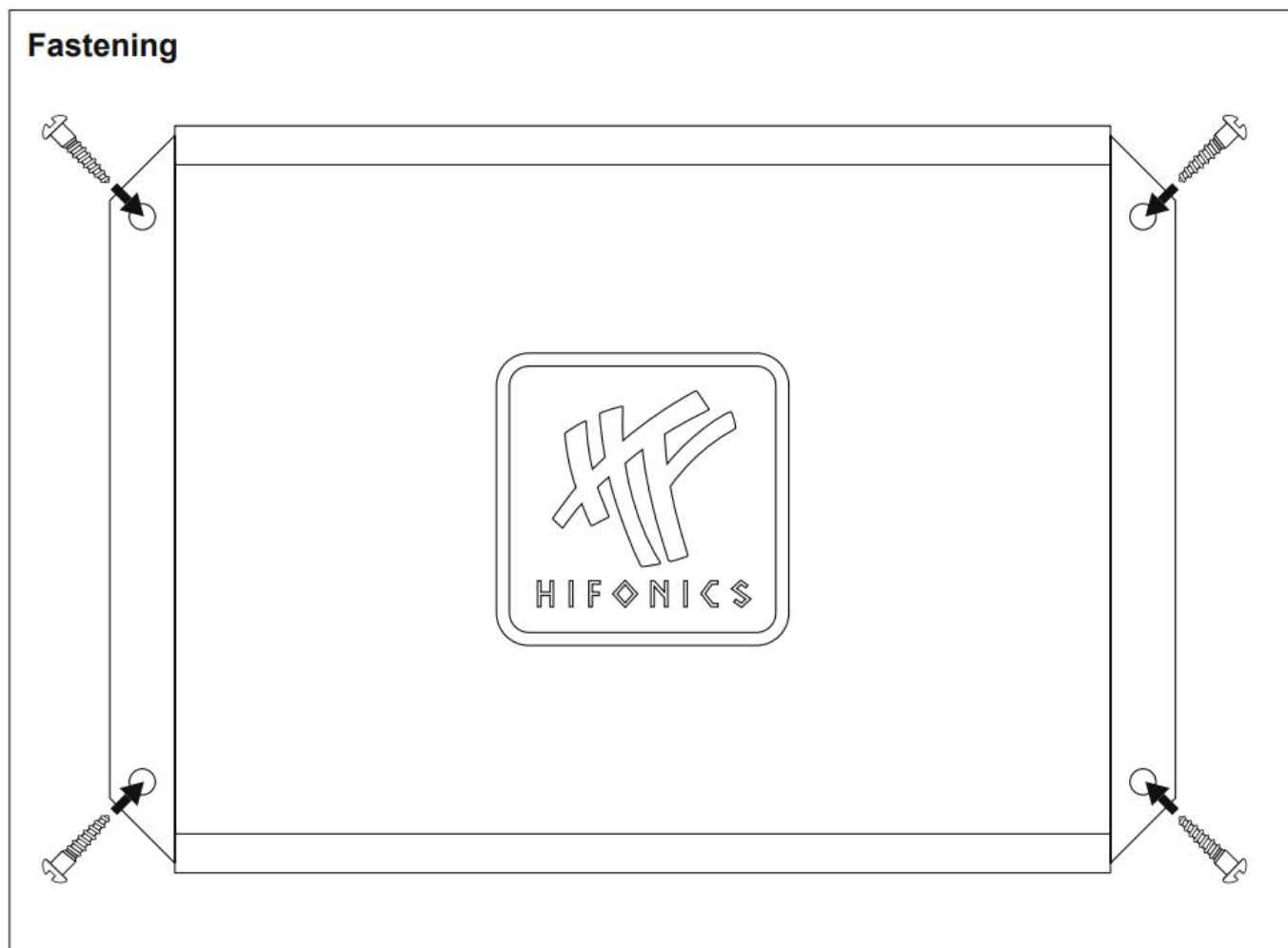
INTENDED USE

This product is only designed for use in a vehicle with 12 volt on-board voltage and negative ground and functions as an amplifier for audio signals. Any other use may lead to damage to the product or in the vicinity of the product.

ENGLISH MECHANICAL INSTALLATION

- Avoid any damages on the components of the vehicle like air bags, cables, board computer, seat belts, gas tank or the like.
- Ensure that the chosen location provides a sufficient air circulation for the amplifier. Do not mount the device into small sealed spaces without air circulation or near by heat dispersing parts or electrical parts of the vehicle.

- All cables must be as short as possible to avoid losses and interferences.
- Use self-tapping screws (not included in delivery) to install the amplifier in the vehicle.



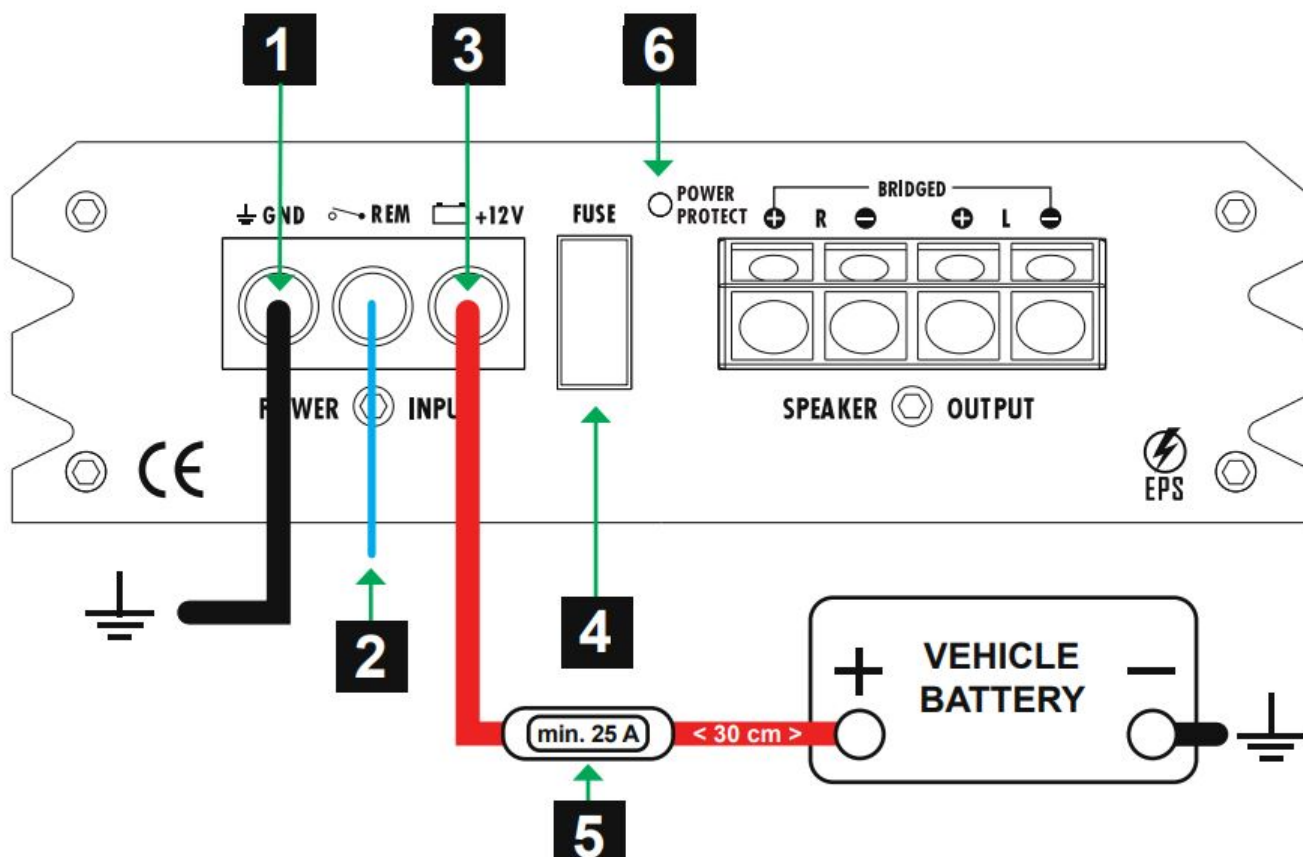
⚠ CAUTION

Before you start with the installation, disconnect necessarily the GROUND connection wire from the battery to avoid any risk of electric shocks and short circuits.

ELECTRICAL INTERCONNECTION

BEFORE CONNECTING

For the professional installation of a sound system, car audio retail stores offers appropriate wiring kits. Ensure a sufficient profile section (refer to the table on the next page) and a suitable fuse rating and the conductivity of the cables when you purchase your wiring kit. Clean and remove rust-streaked and oxidized areas on the contact points of the battery and the ground connection. Make sure that all screws are fixed tight after the installation, because loose connections cause malfunctions, insufficient power supply or interferences.



1 GND Connect the GND terminal with a suitable contact ground point on the vehicle's chassis. The ground wire must be as short as possible and must be connected to a blank metallic point at the vehicle's chassis. Ensure that this ground point has a stable and safe electric connection to the negative “-” pole of the battery. Check this ground wire from the battery to the ground point if possible and enforce it if required. Use a ground wire with a sufficient cross section (refer to the table and the recommendations on the next page) and the same size like the +12V power supply wire.

2 REM IN/OUT Connect a turn-on signal or the turn-on remote signal of your head unit (REM) with the REM IN/OUT terminal of the amplifier. Use therefor a suitable cable with a sufficient cross section (0,5 mm²). Hereby the amplifier turns on or off with your head unit.

If you use the AUTO TURN-ON function (refer to page 22, section 9), the REM IN/OUT terminal does not need to be connected. However, the REM IN/OUT terminal can then connected to the REM terminal of another amplifier to provide a control signal to it (REM OUT function).

3 +12V Connect the +12V terminal with the +12V pole of the vehicle's battery. Use a suitable cable with a sufficient cross section (refer to the table on the next page).

4 FUSE Slot for the device fuse (25 A).

5 ADDITIONAL CABLE FUSE (NOT INCLUDED) Install an extra fuse (not included) for the +12V power cable near the battery to secure the power cable. The distance between the fuse and the battery should not exceed 30 cm. The fuse size must be adapted to the cable cross-section of the installed power cable (see table below).

IMPORTANT: The fuse on the battery does not protect the amplifier, but the cable between the battery and the amplifier against short circuits.

		Cable length in meters							
		0 - 1,2	1,2 - 2,1	2,1 - 3,1	3,1 - 4,0	4,0 - 4,9	4,9 - 5,8	5,8 - 6,7	6,7 - 8,5
Fuse value in Amperes	0 - 20	2,5	4	4	6	6	10	10	10
	20 - 35	4	6	10	10	16	16	16	20
	35 - 50	6	10	10	16	16	20	20	20
	50 - 65	10	10	16	20	20	20	20	35
	65 - 85	16	16	20	20	35	35	35	50
	85 - 105	16	16	20	35	35	35	35	50
	105 - 125	20	20	20	35	35	50	50	50
Minimum cable cross-section in mm ²									

Recommended minimum cable cross-section to guarantee full amplifier performance: Up to a length of 3 m: 10 mm²

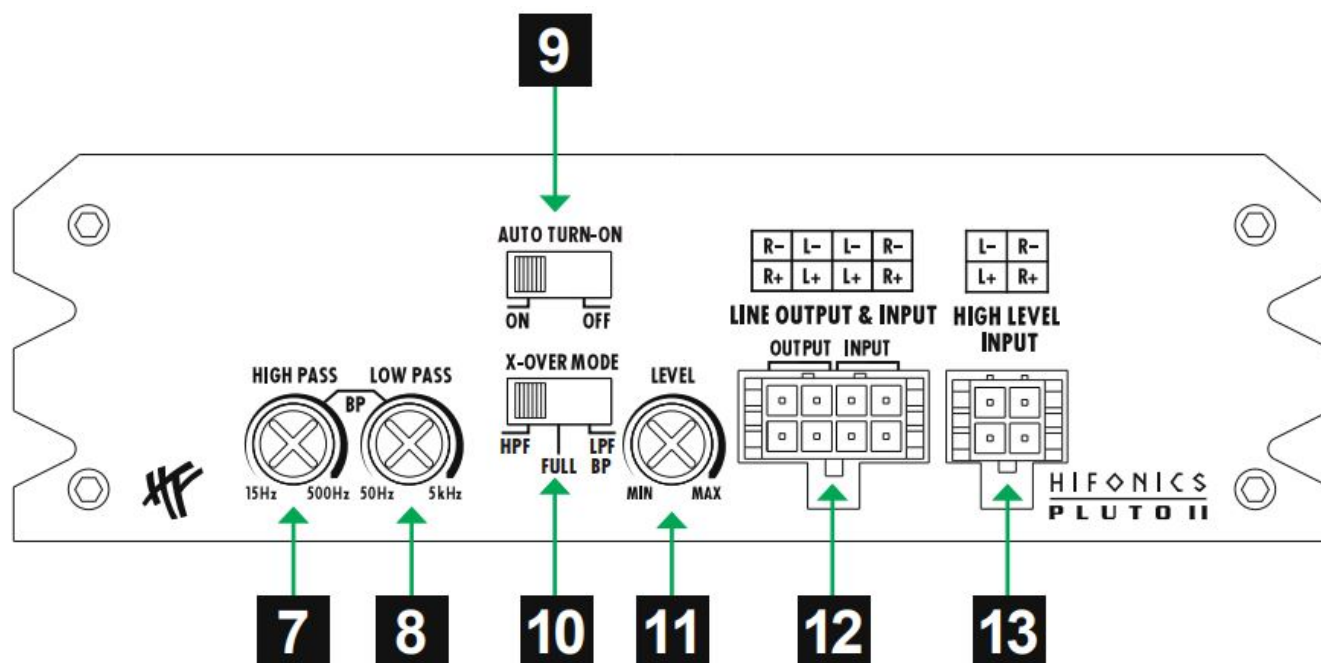
From a length of 3 m: 16 mm²

6 POWER/PROTECT If the LED lights up in blue, the amplifier is ready for operation. If the LED lights up in red, there is a malfunction. Refer in this case to chapter TROUBLE SHOOTING on page 26.

⚠ CAUTION

Replace defective fuses only with a new one of the same type and with the same fuse rating.

DESCRIPTION OF OPERATION



7 HIGH PASS This controller limits the frequency downwards. Low frequencies that can damage a loudspeaker are cut off. The crossover frequency is adjustable from 15 Hz to 500 Hz.

8 LOW PASS This controller limits the frequency upwards. The crossover frequency is adjustable from 50 Hz to 5000 Hz (5 kHz).

9 AUTO TURN-ON If your head unit does not have a turn-on signal (REM), you can use the automatic turn-on function of the amplifier. The amplifier then detects a voltage rise to 6 volts when the head unit is turned on by a

so-called “DC offset” and then turns on the amplifier. As soon as the head unit is switched off again, the amplifier switches itself off.

10 X-OVER MODE This switch selects the desired operating mode of the amplifier:
FULL: Full Range mode – the entire frequency range is amplified
HP: High Pass mode adjustable with HIGH PASS – frequency is limited downwards,
LP/BP: Low Pass mode adjustable with LOW PASS – frequency is limited upwards,
The HIGH PASS controller acts as a Bandpass filter and limits the frequency downwards.

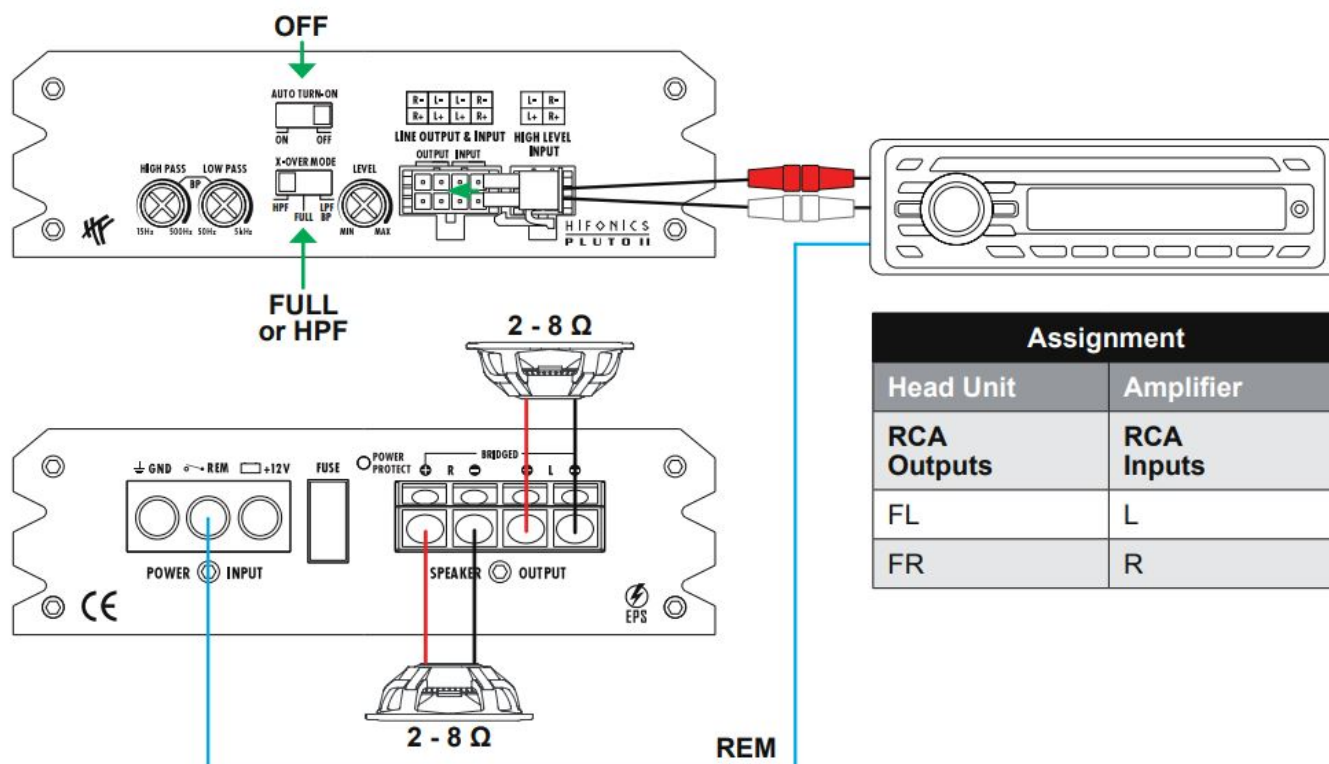
Note: If the HIGH PASS controller is set higher than the LOW PASS controller, no sound is heard.

11 LEVEL This controller determines the input sensitivity (adaptation to the output signal of the head unit).

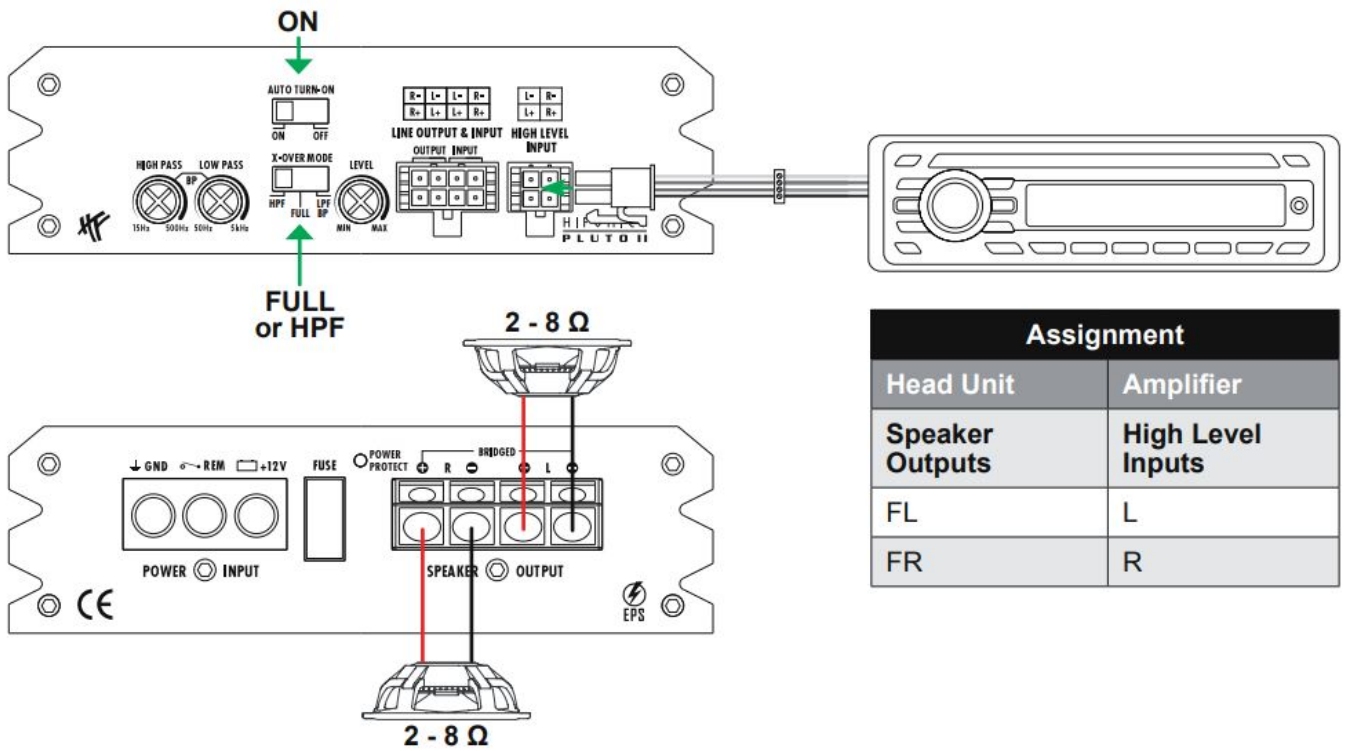
12 LINE INPUT Connect the LINE INPUTS with the head unit by using the included RCA cable harness.
LINE OUTPUT The LINE OUTPUT RCA jacks provide a linear full-range audio signal for driving additional amplifiers, such as the PLUTO I monoblock. Use the included RCA cable harness for this.

13 HIGH LEVEL INPUT If your head unit does not have RCA preamp outputs, you can use the HIGH LEVEL INPUT. Connect the loudspeaker cables of the head unit to the included cable harness.

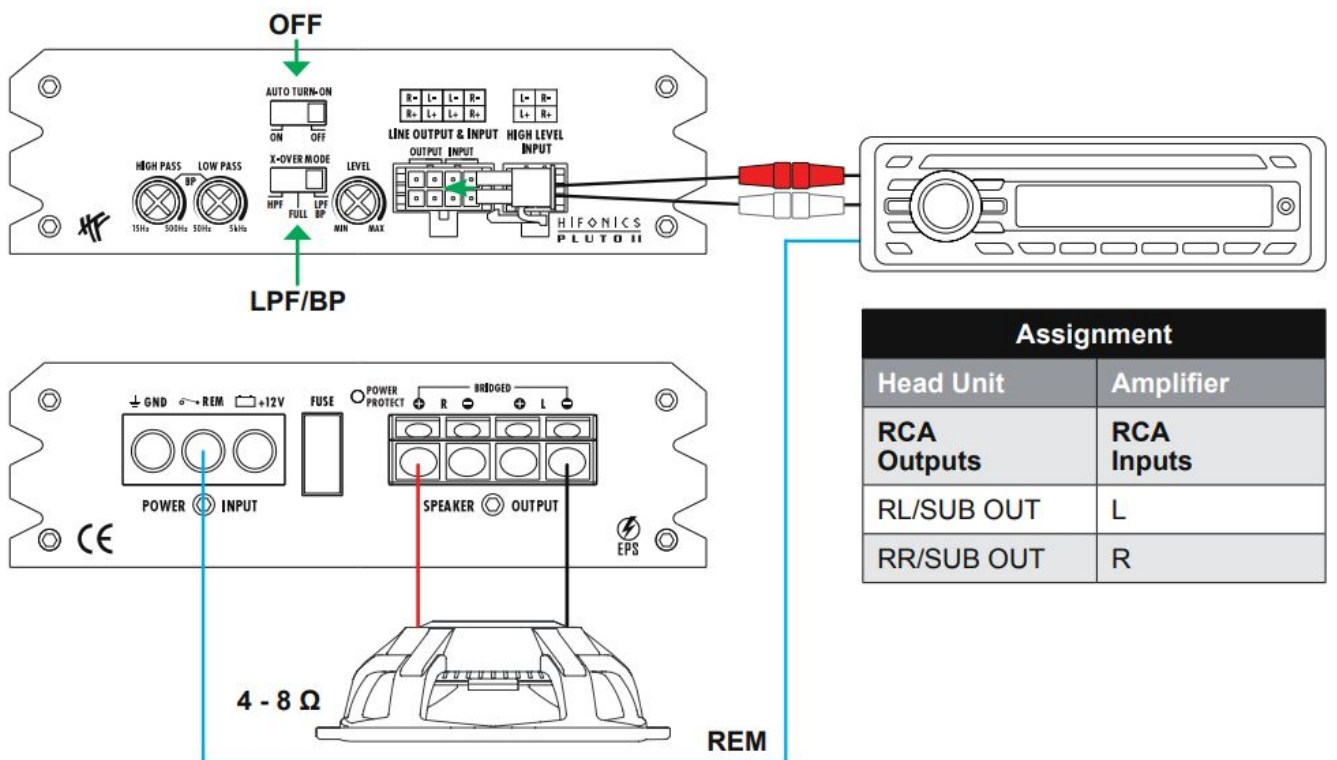
APPLICATION EXAMPLE A



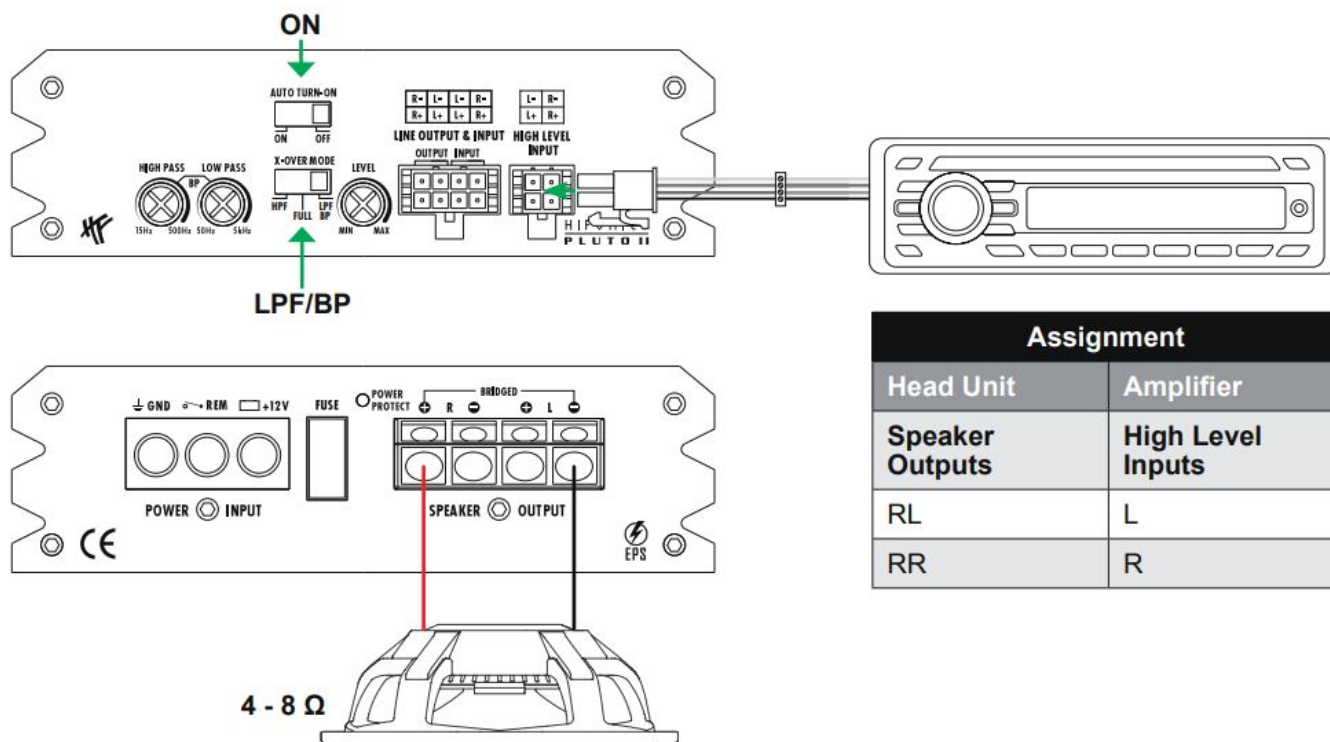
APPLICATION EXAMPLE B



APPLICATION EXAMPLE C



APPLICATION EXAMPLE D



TROUBLE SHOOTING

⚠ CAUTION

All instructions in this trouble shooting refer to the entire sound system and its individual components. The features of your device may not match the functions described in the notes. Then skip this point and move on to the next one.

NO FUNCTION / THE POWER LED IS NOT ILLUMINATED

First check the fuse of the routed power cable on the vehicle battery. The fuse is defective. Replace the defective fuse with an equivalent one, never with a higher value.

- The fuse fails again.

In this case there appears to be a short circuit between the fuse and the amplifier. To do this, check the + 12V power cable along its entire length from the battery to the amplifier for damage and whether there is a short circuit to ground, e.g. a contact with the vehicle chassis or the body. If necessary, replace the defective power cable.

The fuse is apparently okay. Use a standard 12 volt voltmeter to check the voltage between the + 12V connection and the ground connection on the amplifier.

- There is no voltage. Use the voltmeter to check the fuse, which is located close to the vehicle battery, to see whether there is voltage between the output and ground. If there is no voltage there, either the fuse holder or the fuse is defective, although it appears to be okay. If necessary, replace the fuse holder or fuse.
- There is voltage. If you operate the amplifier with a pre-amplifier signal (RCA), you must have laid a remote turn-on wire from the head unit to the REM terminal of the amplifier. The AUTO TURN-ON switch must be in the OFF position. However, you can test the AUTO TURN-ON switch to ON to see if the amplifier then turns on. If so, there is a problem with the control line..
 - A remote turn-on wire is connected to the REM terminal at the amplifier. Use the voltmeter to check

whether there is voltage between the REM terminal of the amplifier and ground. The head unit must be switched on. There is no voltage.

- Check the remote turn-on wire from the amplifier to the head unit for a short circuit or damage. If necessary, replace the control line.. There is voltage.
- The amplifier is probably malfunctioning or defective. Contact your retailer.

If you operate the amplifier with the loudspeaker signals (high level mode), the AUTO TURN-ON switch must be switched to ON.

- The AUTO TURN-ON switch is in the ON position, but the amplifier remains off. Check the speaker cables from the head unit to the amplifier for short circuits or damage. If necessary, replace the speaker cables or insulate the damaged area.

THE POWER LED IS ON, BUT NO SOUND COMES FROM THE SPEAKERS

Check the following steps: Low level mode: Are the RCA cables on the head unit and on the amplifier correctly connected?

- The RCA cables are correctly connected. Then an RCA cables could be defective. Check the function of the RCA cables on another audio device. If necessary, replace the defective RCA cables.

High level mode: Are the loudspeaker cables on the head unit and the high level inputs of the amplifier or on the high level cable plug correctly connected?

- The speaker cables are connected correctly. A speaker cable could be defective. If necessary, replace the speaker cable or insulate the damaged area.

Are the speaker cables correctly connected between the speakers or the subwoofer at the speaker outputs of the amplifier?

- The speaker cables are connected correctly. A speaker cable could be defective. If necessary, replace the speaker cable or insulate the damaged area.

Is the high pass filter or subsonic filter set higher than the low pass filter on the amplifier? Then slowly turn down the controller for the high pass filter or subsonic filter until the sound can be heard.

Is the input mode switch on the amplifier set correctly? Check the setting and change the switch position if necessary.

Are the crossover switches on the amplifier set correctly? Check the settings and change the respective switch position if necessary.

Are the speakers or the subwoofer working? Hold a standard 9 volt block battery to the terminals of each loudspeaker or the subwoofer.

- A faint cracking sound can be heard. The speaker or subwoofer is fine.
- There is nothing to be heard. The loudspeaker or subwoofer could be defective. If necessary, replace the defective speaker or subwoofer.

Are the settings on the head unit set correctly?

- Check the fader and balance settings
- Check whether the mute function is activated
- Check whether a high pass or low pass filter is activated
- Check whether playback has been paused
- Check the source settings

- Check whether any existing subwoofer output is activated

DISTORTION OR HISSING NOISE CAN BE HEARD FROM THE SPEAKERS

Check the following steps: Is a input level controller on the amplifier set too high?

Slowly turn the controller back until you hear a clean audio signal. Is the Bass Boost controller on the amplifier set too high?

Slowly turn the controller back until you hear a clean audio signal. Is the loudness function on the head unit set too high?

Deactivate loudness or turn the loudness setting back until you can hear a clean audio signal. Are the EQ and sound settings on the head unit set too high?

Turn down the settings for Treble, Middle and Bass or deactivate the equalizer until you can hear a clean audio signal.

ENGINE SPEED DEPENDENT NOISE CAN BE HEARD FROM THE SPEAKERS

Check the following steps: Have the RCA cables been laid separately from the power cable in the vehicle?

If necessary, lay the cables again and make sure that the audio cables are laid separately from the power cable on the left and right in the vehicle. Is the amplifier's ground connection correctly connected? Make sure that the ground connection of the amplifier is not connected directly to the negative pole of the vehicle battery. Select a suitable ground point on the vehicle body for connection. If necessary, use contact spray to improve the conductivity of the connections. Is the conductivity of the ground cable from the vehicle battery to the body okay? Make sure that the ground connection of the vehicle battery has a stable and conductive connection to the body. If necessary, use contact spray to improve the conductivity of the connections.

AN ACTIVE OPERATED TWEETER IS DISTORTED OR CRACKED CAUTION: Tweeters will be damaged if the frequencies are too low. Please note the manufacturer's information on which frequency setting is recommended. To be on the safe side, pause the playback of the head unit first. Check the following steps: Is the crossover mode switch of the relevant channel pair on the amplifier set correctly?

Set the crossover mode switch to the high pass position (HP or HPF). Is the high pass filter of the relevant channel pair set too low on the amplifier?

First turn the high pass controller fully clockwise. Now start playback on the head unit. Then turn the high pass controller slowly counter-clockwise until you can hear a clean sound from the tweeters and produce a balanced sound together with the woofers/mid-range speakers. Make sure that the woofers/ mid-range speakers are set correctly with the respective high pass and low pass controllers.

AMPLIFIER ACTIVATES THE PROTECTIVE CIRCUIT / THE PROTECT LED LIGHTS UP

Check the following steps: Short circuit on the speaker cables

- First disconnect all speaker cables from the amplifier. Use a Multimeter to check the ohmic impedance of each loudspeaker by measuring between its plus and minus lines. With standard loudspeakers the value fluctuates between 3 and 5 ohms. The values for low-resistance subwoofers can be lower.
- The measurement shows a resistance value of less than 0.5 Ohms

Then there is a short circuit. Remove the wiring of the affected loudspeaker at its connections. Now use the multimeter to check the ohmic impedance directly at the loudspeaker connections by measuring between the plus and minus connections.

The measurement shows a resistance value of more than 0.5 Ohms

- The speaker is fine, so the speaker wire appears to be defective and causing a short circuit.
Replace the defective speaker cable. The measurement shows a resistance value of less than 0.5 Ohms
- The speaker appears to be defective and is shorting out. Replace the defective speaker. The load impedance of the loudspeakers or the subwoofer is too low · Compare the ohmic impedance of the connected loudspeaker or subwoofer with the technical specifications of the amplifier. For example, if the amplifier is only designed for 2 or 4 ohm operation, no loudspeaker with less than 2 ohms may be

connected.

The cross-section of the power cables is too small

- If the cable cross-section is too small, this leads to an increased ohmic resistance and thus to a voltage drop (voltage loss). This indicates that the amplifier consumes more power. The increased power consumption results in a significantly higher heat development and the amplifier switches to thermal protection mode. Therefore, observe the recommended cable cross-sections in these instructions and, if necessary, lay power cables with a larger cable cross-section.

The amplifier is overheated

- The heat sink of each amplifier requires sufficient air circulation to be able to dissipate the heat generated during operation. If necessary, change the installation position in favor of better cooling of the amplifier or ensure better air circulation at the installation location.
- Turn off the sound system and wait about half an hour for the amplifier to cool down again. With very hot outside temperatures and strong sunlight, enormous heat develops inside the vehicle. The amplifier then activates its thermal protection circuit to prevent damage. After cooling down, the amplifier works properly again.

⚠ CAUTION

All instructions in this trouble shooting refer to the entire sound system and its individual components. The features of your device may not match the functions described in the notes. Then skip this point and move on to the next one.

HIFONICS **PLUTO** S E R I E S




Audio Design GmbH Am Breilingsweg 3 · D-76709 Kronau/Germany

Tel. +49 7253 – 9465-0 · Fax +49 7253 – 946510

www.audiodesign.de – www.hifonics.de

© Audio Design GmbH, All Rights Reserved



 The image shows the HIFONICS PLUTO II Digital Class D 2-Channel Amplifier. It is a black, rectangular unit with a silver faceplate. The faceplate features the HIFONICS logo and the model name 'PLUTO II'. To the right of the unit is a blue vertical banner with the text 'HIFONICS PLUTO II' and 'Digital Class D 2-Channel Amplifier'.	<p>HIFONICS PLUTO II Digital Class D 2-Channel Amplifier [pdf] User Manual PLUTO II, Digital Class D 2-Channel Amplifier, Class D 2-Channel Amplifier, 2-Channel Amplifier, Amplifier, PLUTO II</p>
---	---