



Hideez USB Bluetooth 4.0 Adapter User Manual

[Home](#) » [HIDEEZ](#) » Hideez USB Bluetooth 4.0 Adapter User Manual 

Hideez USB Bluetooth 4.0
Adapter User Manual

Hideez User Manual

How to use Hideez USB Bluetooth Dongle on macOS

Hideez Bluetooth Dongle is a highly compatible multiplatform device that utilizes Plug and Play technology. This means that there is no need to install additional drivers or software, etc. It is sufficient to switch the internal Bluetooth to the Hideez Bluetooth Dongle using a terminal command and carefully follow all the steps.

To start using Hideez Bluetooth Dongle for the first time, you have to configure it according to the version of your macOS:

1. Ventura 13.5.1
2. Monterey 12.6.8
3. Big Sur 11.7.9
4. Catalina 10.15.7 and lower (Mojave, High Sierra, Sierra, Capitan, Yosemite, Mavericks, Mountain Lion)
5. How to check which Bluetooth your Mac is using now?

Ventura 13.5.1

Please follow each step carefully, as each one serves a specific purpose.

Step 1

Delete all paired devices from the list of Bluetooth devices.



PLEASE NOTE: You will lose Bluetooth connectivity in the initial setup process, and all devices will need

to be re-paired.

Step 2

Insert the Dongle into the USB port and restart your Mac.

Step 3

Send a special command to the system through the terminal (command line), allowing the system to use the Hideez Dongle by default for your Bluetooth devices.

Enter the following command in the Terminal window:

```
sudo nvram bluetoothHostControllerSwitchBehavior=always
```

Then, enter your Mac account password and press Enter.

Step 4

Restart your Mac.

The next time you turn on your computer, please remove and reinsert the Dongle into the USB port, and the system will use the Hideez Dongle.

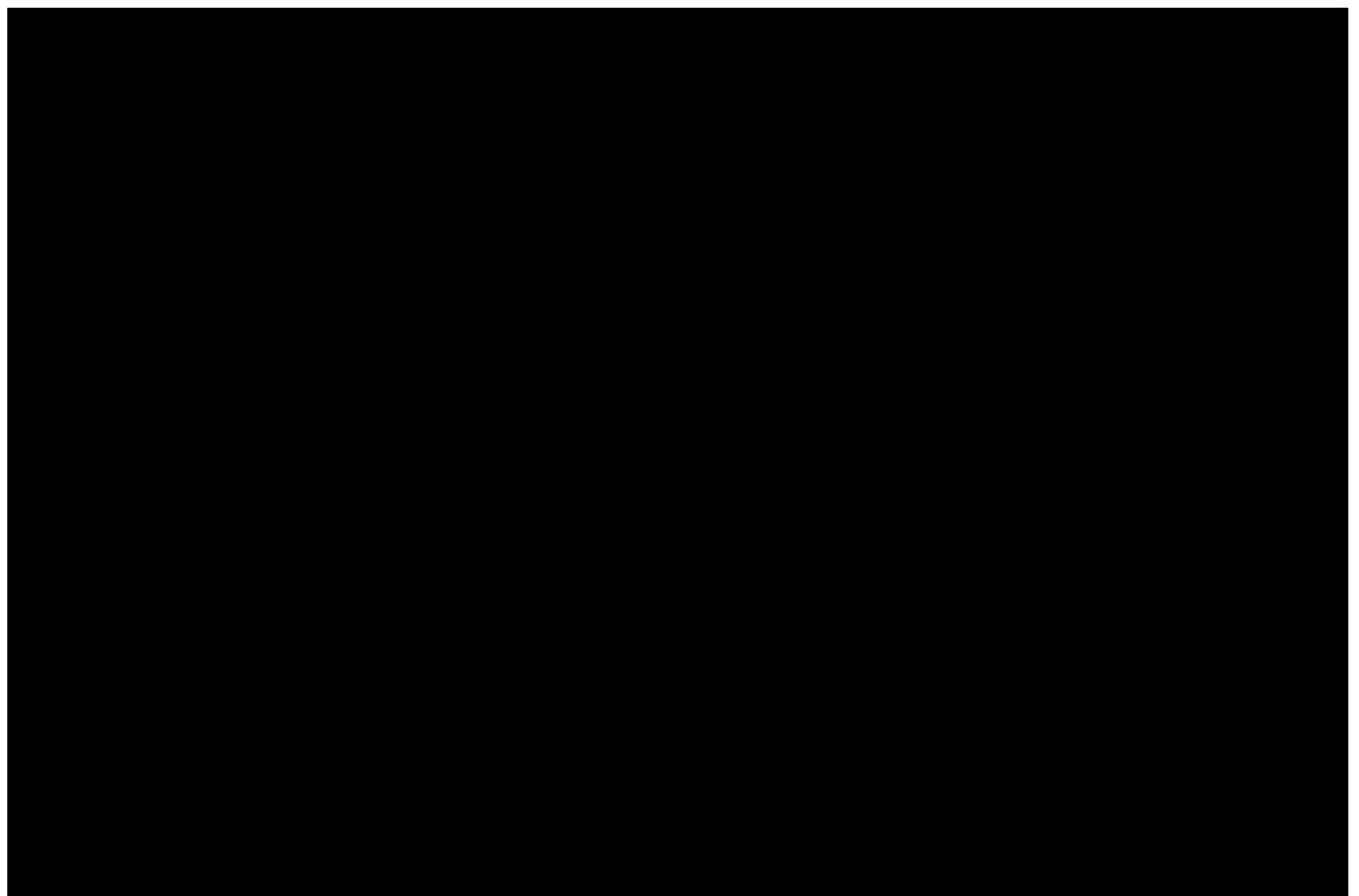
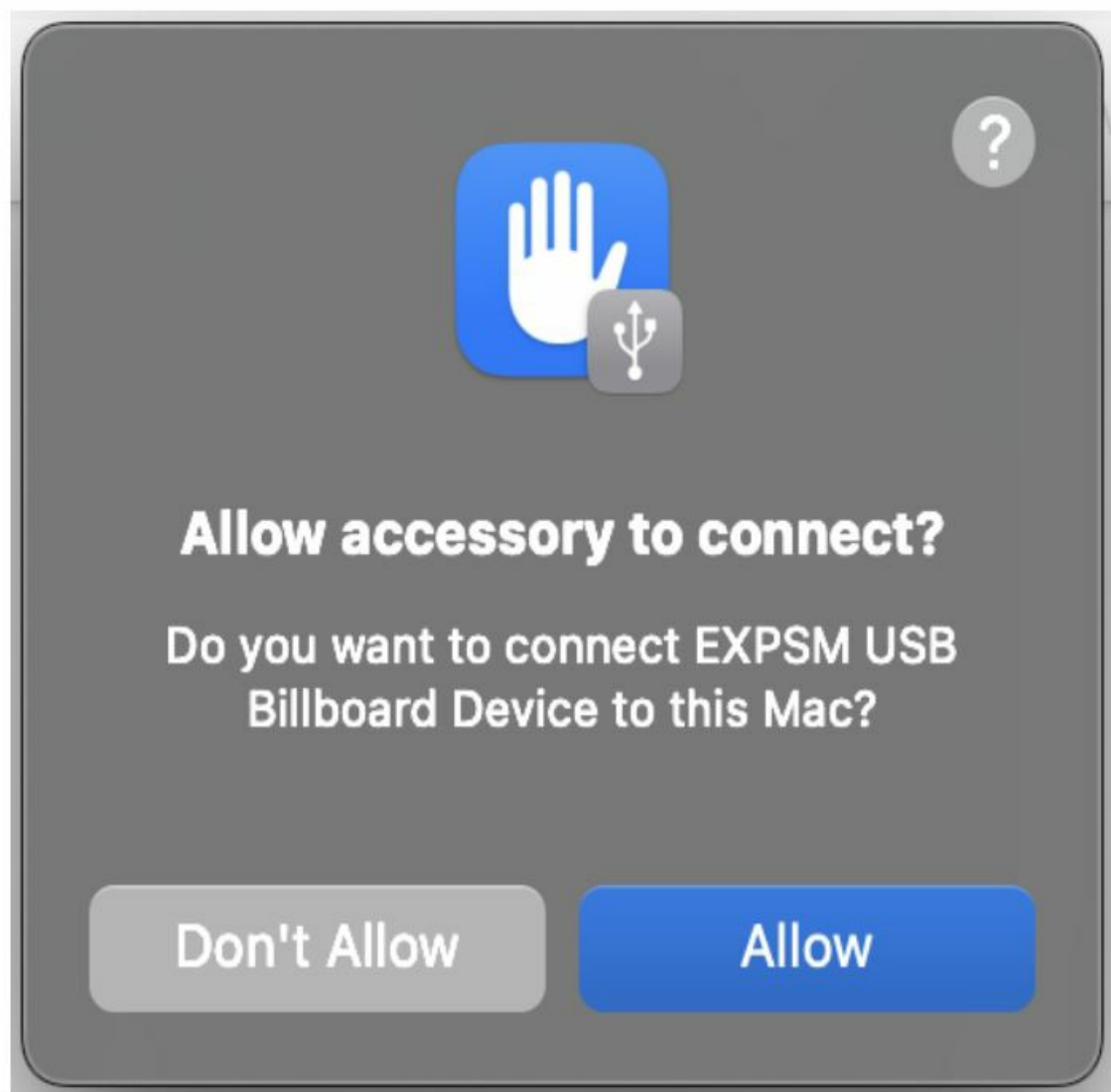
If the Hideez Dongle is plugged in, the system will use it for your Bluetooth devices. If it is not available, it will reconnect the Bluetooth devices to the system adapter.



PLEASE NOTE: Bluetooth connectivity may be unstable on macOS Monterey. If you encounter issues despite following all of these steps, please refer to our troubleshooting or contact us to get support. Our agent will respond to you by email within 24 hours.

The re-pairing process is a one-time setup. Your settings will be saved for future use.

Please, approve the connection if you are using a USB hub with macOS Ventura:



Step 1

Delete all paired devices from the list of Bluetooth devices.



PLEASE NOTE: You will lose Bluetooth connectivity in the initial setup process, and all devices will need to be re-paired

Step 2

Insert the Dongle into the USB port and restart your Mac.

Step 3

Send a special command to the system through the terminal (command line), allowing the system to use the Hideez Dongle by default for your Bluetooth devices.

Enter the following command in the Terminal window:

`sudo nvram bluetoothHostControllerSwitchBehavior=always`

Then, enter your Mac account password and press Enter.

Step 4

Restart your Mac.

The next time you turn on your computer, please remove and reinsert the Dongle into the USB port, and the system will use the Hideez Dongle.

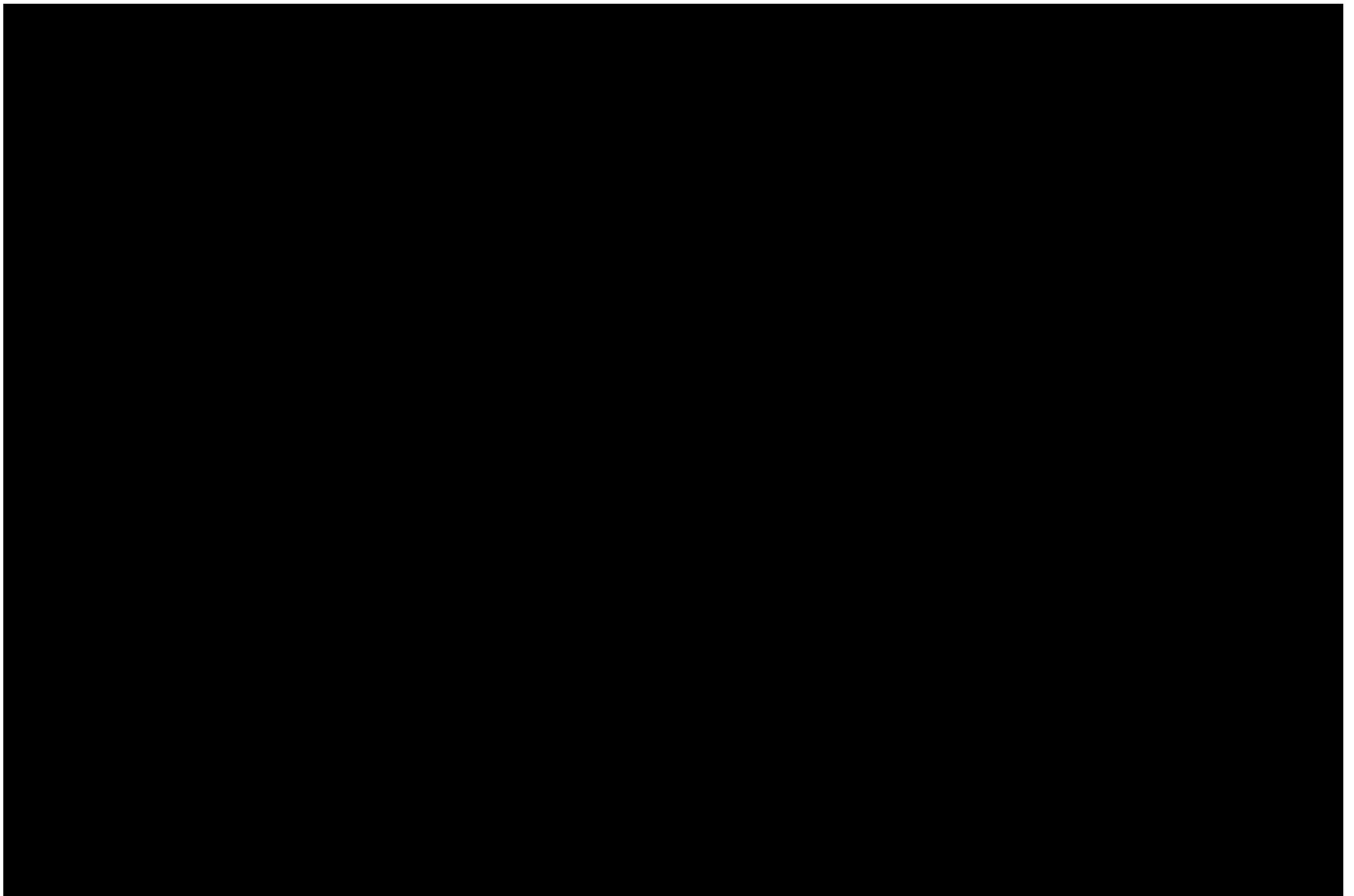
If the Hideez Dongle is plugged in, the system will use it for your Bluetooth devices. If it is not available, it will reconnect the Bluetooth devices to the system adapter.



PLEASE NOTE: Bluetooth connectivity may be unstable on macOS Monterey. If you encounter issues despite following all of these steps, please refer to our troubleshooting or contact us to get support. Our agent will respond to you by email within 24 hours.

The re-pairing process is a one-time setup. Your settings will be saved for future use.

Big Sur 11.7.9



Step 1

Delete all paired devices from the list of Bluetooth devices.



PLEASE NOTE: You will lose Bluetooth connectivity in the initial setup process, and all devices will need to be re-paired.

Step 2

Insert the Dongle into the USB port and restart your Mac.

Step 3

Send a special command to the system through the terminal (command line), allowing the system to use the Hideez Dongle by default for your Bluetooth devices.

Enter the following command in the Terminal window:

```
sudo nvram bluetoothHostControllerSwitchBehavior=always
```

Then, enter your Mac account password and press Enter.

Step 4

Restart your Mac.

The next time you turn on your computer, please remove and reinsert the Dongle into the USB port, and the system will use the Hideez Dongle.

If the Hideez Dongle is plugged in, the system will use it for your Bluetooth devices. If it is not available, it will reconnect the Bluetooth devices to the system adapter.



PLEASE NOTE: Bluetooth connectivity may be unstable on macOS Monterey. If you encounter issues despite following all of these steps, please refer to our troubleshooting or contact us to get support. Our agent will respond to you by email within 24 hours.

The re-pairing process is a one-time setup. Your settings will be saved for future use.

Catalina 10.15.7 and lower (Mojave, High Sierra, Sierra, Capitan, Yosemite, Mavericks, etc.)

For macOS up to 10.15, Catalina there are two methods to configure the Dongle:

1. Using the Terminal (traditional way)
2. Using the Bluetooth Explorer utility

Using the terminal (traditional way)

Please follow each step carefully, as each one serves a specific purpose.

Step 1

Delete all paired devices from the list of Bluetooth devices.



PLEASE NOTE: You will lose Bluetooth connectivity in the initial setup process, and all devices will need to be re-paired.

Step 2

Insert the Dongle into the USB port and restart your Mac.

Step 3

Send a special command to the system through the terminal (command line), allowing the system to use the Hideez Dongle by default for Bluetooth devices.

Enter the following command in the Terminal window:

```
sudo nvram bluetoothHostControllerSwitchBehavior=always
```

Then, enter your Mac account password and press Enter.

Step 4

Restart your Mac.

The next time you turn on your computer, please remove and reinsert the Dongle into the USB port, and the system will use the Hideez Dongle.

If the Hideez Dongle is plugged in, the system will use it for your Bluetooth devices. If it is not available, it will reconnect the Bluetooth devices to the system adapter.

Using the Bluetooth Explorer utility:

Only for macOS versions up to 10.15 Catalina.

Please follow each step carefully, as each one serves a specific purpose.

Step 1

Delete all paired devices from the list of Bluetooth devices.



PLEASE NOTE: You will lose Bluetooth connectivity in the initial setup process, and all devices will need to be re-paired.

Step 2

Insert the Dongle into the USB port and restart your Mac.

Step 3

Install the Bluetooth Explorer: <https://developer.apple.com/bluetooth/>

Please use this link for free registration and downloading – “hardware_io_tools_for_xcode”, where you can access the Bluetooth Explorer Application.

macOS 10.7
macOS 10.8
macOS 10.9
macOS 10.10
macOS 10.11
macOS 10.12
macOS 10.13
macOS 10.14
macOS 10.15

2. Follow the instructions from the video.



PLEASE NOTE: Bluetooth connectivity may be unstable on macOS Monterey. If you encounter issues despite following all of these steps, please refer to our troubleshooting or contact us to get support. Our agent will respond to you by email within 24 hours.

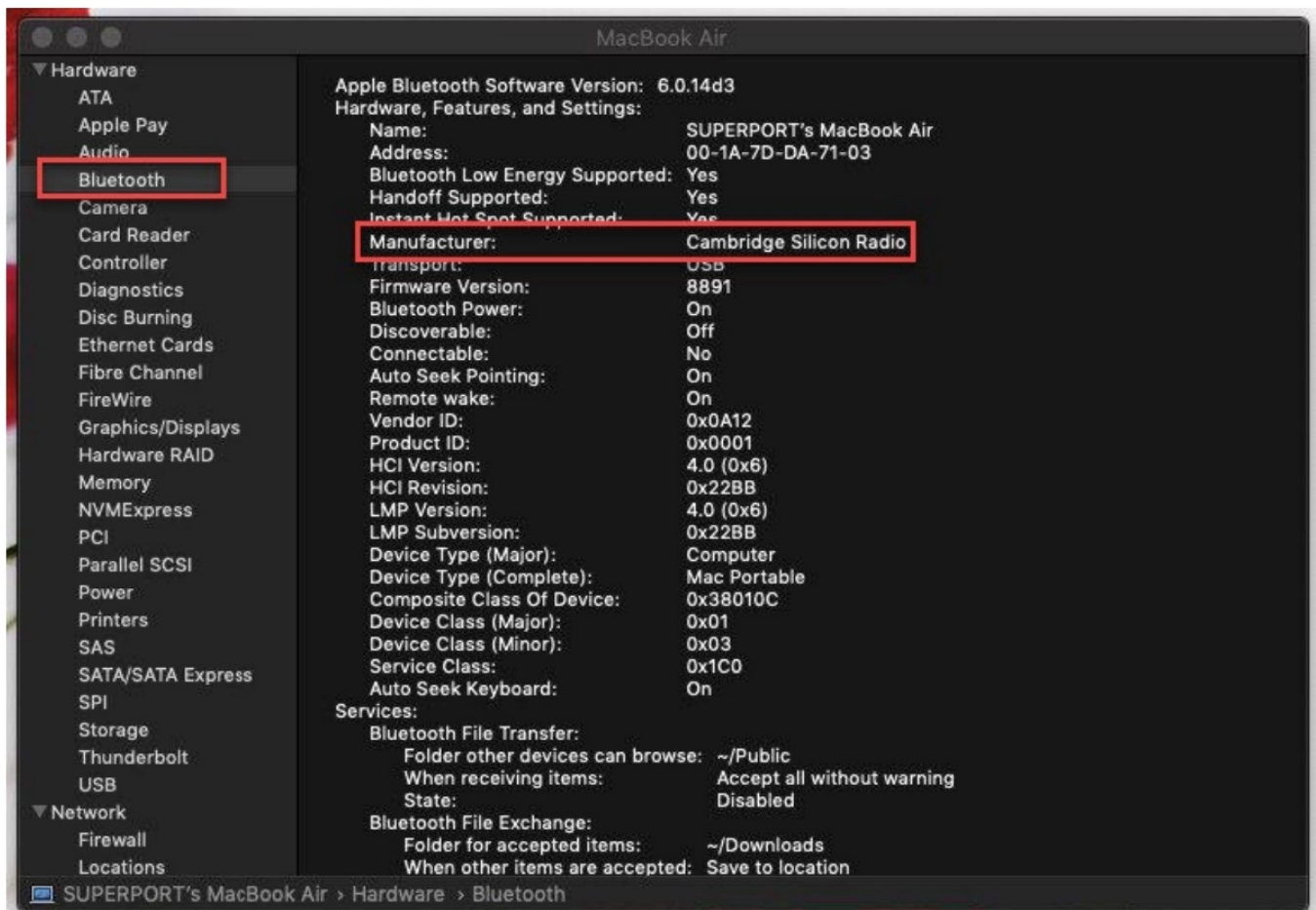
The re-pairing process is a one-time setup. Your settings will be saved for future use.

How to check your Mac's current Bluetooth connection?

Once you've completed the setup, it's important to confirm that the Dongle is successfully connected and prepared for use.

For macOS versions up to 10.15 Catalina (including Mojave, High Sierra, Sierra, El Capitan, Yosemite, Mavericks, etc.), begin by accessing the Apple menu and selecting “About This Mac.” Within the “About This Mac” window, proceed to click the “System Report” button found in the “Overview” tab.

You will find information regarding your Bluetooth connection in this section, and the manufacturer details should match one of the screenshots provided.



If you have any questions about these instructions or using the Hideez Dongle, please contact our Support team at support@hideez.com. Our agent will reply within 24 hours.




Contents


[1 Documents / Resources](#)

[1.1 References](#)

Documents / Resources

	<p>Hideez USB Bluetooth 4.0 Adapter [pdf] User Manual</p> <p>USB Bluetooth 4.0 Adapter, Bluetooth 4.0 Adapter, 4.0 Adapter, Adapter</p>
---	---

References

-  [Bluetooth - Apple Developer](#)
- [User Manual](#)