



Contents [[hide](#)]

- [1 HIDDEN HELPERS HSS1053W Pull Out Shelf](#)
- [2 SAFETY PRECAUTIONS](#)
- [3 USING A HIDDEN HELPER](#)
- [4 Product Information](#)
- [5 Product Usage Instructions](#)
- [6 Frequently Asked Questions](#)
- [7 Documents / Resources](#)
 - [7.1 References](#)

HIDDEN HELPERS

HIDDEN HELPERS HSS1053W Pull Out Shelf



SAFETY PRECAUTIONS

Please read the instruction manual and save it for future reference.

To reduce the risk of fire, electric shock or injury to persons during the use of your appliance, follow the basic precautions, including the following:

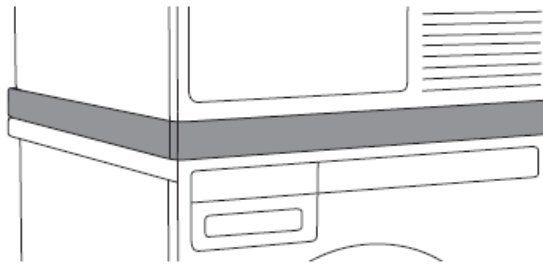
- Before using the product for the first time, please read all instructions and save them for future reference.
- Instructions for use are available on our website at www.asko.com.
- The product is intended solely for household use.
- Do not repair and do not attempt to replace any part of the product or to service it in any other way, unless this is expressly recommended in the instructions for use and maintenance or in the instructions for user repairs. Also, do not attempt any repairs or servicing if you do not understand the instructions entirely or if you lack the skills for such repairs.
- Any product repair and maintenance pertaining to safety or performance should be done by trained experts.
- In case of incorrect use or product servicing by an unauthorized person, the user shall be solely responsible for covering any damage or expenses.
- Do not allow children to play with the product or on the product. Watch children closely when you are using the product near them.
- The product is not intended for use by persons (including children) with impaired physical or mental capabilities or lack of experience and knowledge. Such persons should be instructed on safe use of the product by the person responsible for their safety.
- Do not let children younger than three years to come near the appliance, unless they are under constant supervision.
- Do not install or store the product in places where it could be exposed to the elements.

The following symbols are used throughout the manual and they have the following meanings:

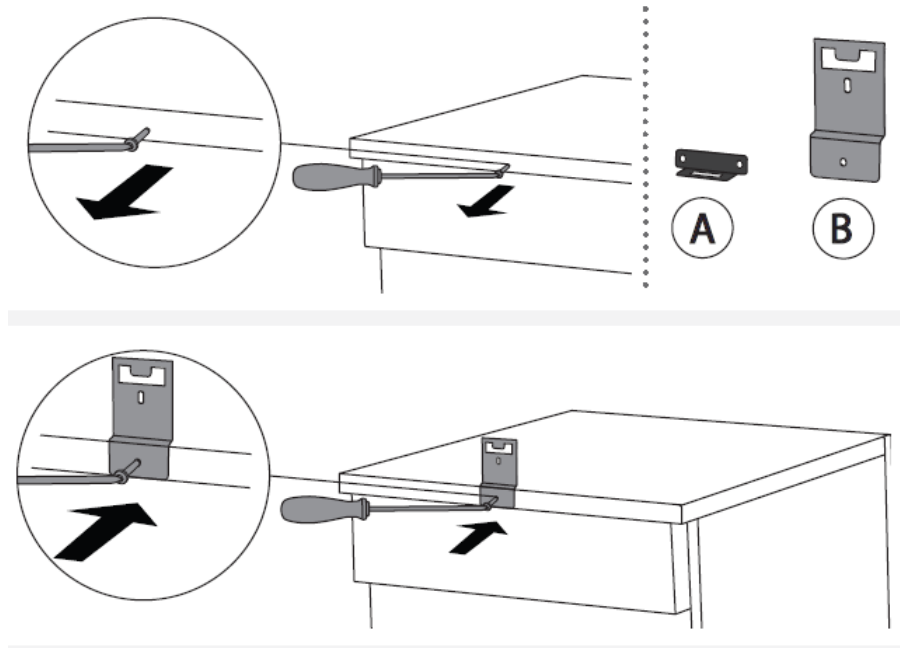
- Information, advice, tip, or recommendation
- **Warning** – general danger
- **Warning** – danger of electric shock

INSTALLING A HIDDEN HELPER BETWEEN A WASHING MACHINE AND A DRYER

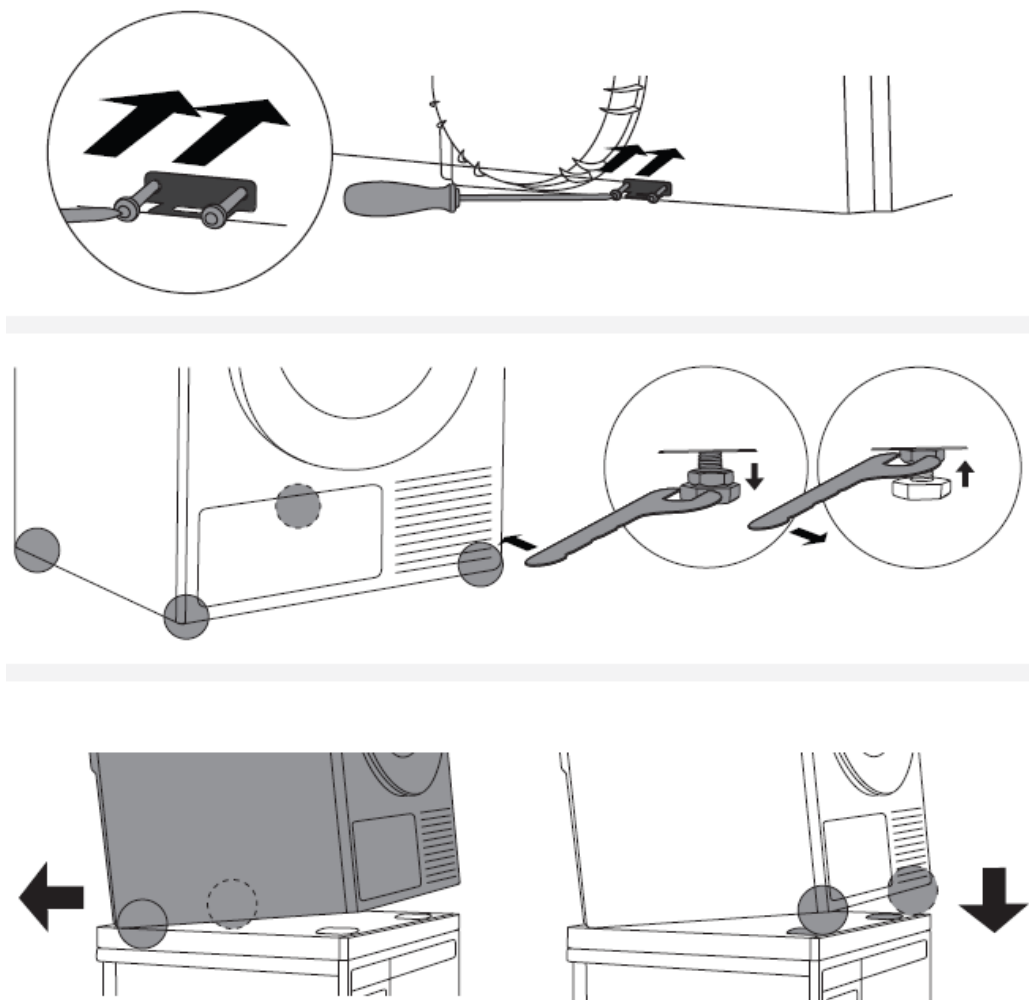
The hidden helper may only be used with a washing machine and a dryer by the manufacturer, Asko Appliances.



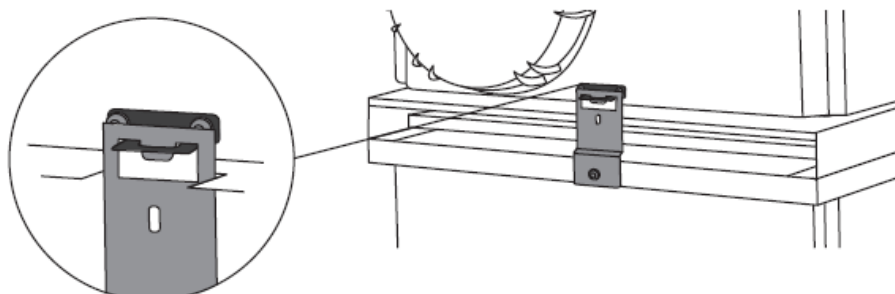
1. Undo the middle screw on the back side of the washing machine.
2. Attach the anti-tip bracket (B) to the upper edge of the back of the washing machine.
The anti-tip bracket (B) is supplied in the hidden helper.



3. Attach the anti-tip bracket (A) to the lower edge of the back of the dryer. The anti-tip bracket (A) is supplied in the dryer cardboard box.
4. Before placing the dryer onto the hidden helper, undo the dryer legs by five turns from the fully retracted position, and tighten the safety nuts all the way.



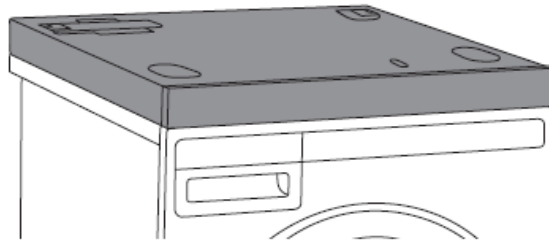
5. Lift the dryer and tilt it towards the back. Insert the back feet of the dryer into the slots in the hidden helper and push the dryer back towards the back of the hidden helper until the anti-tip bracket (A) locks in with the anti-tip bracket (B). Anti-tip bracket position so that the bracket on the dryer and the bracket on the washing machine are fully aligned.
6. Final installation of the hidden helper between a washing machine and a dryer, from the back.



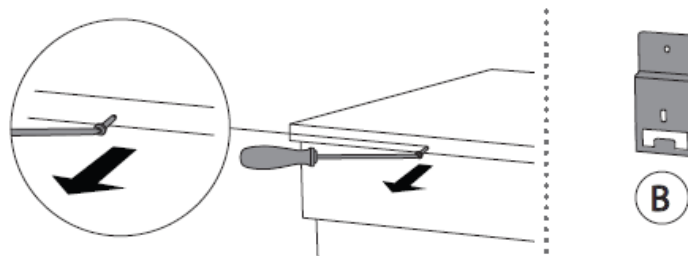
To install a hidden helper between a washing machine and a dryer that are already stacked in a tower, first follow the instructions for dismantling the tower. This means that the anti-tip bracket has to be removed first.

INSTALLING A HIDDEN HELPER ONTO THE APPLIANCE

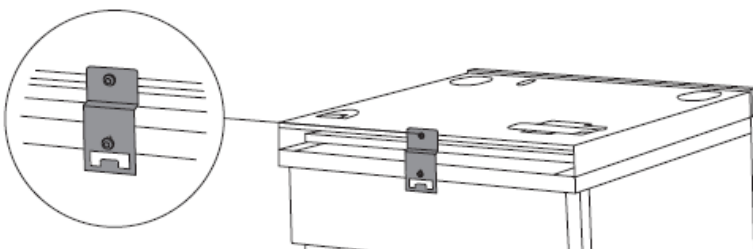
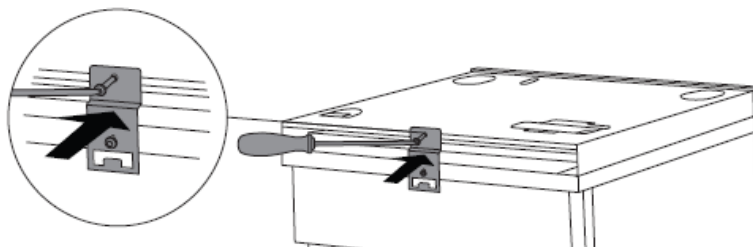
The hidden helper may only be used with a washing machine and a dryer by the manufacturer, Asko Appliances.



1. Undo the middle screw on the back side of the washing machine or dryer.
2. Attach the anti-tip bracket (B) to the washing machine or dryer. The anti-tip bracket (B) is supplied in the hidden helper.

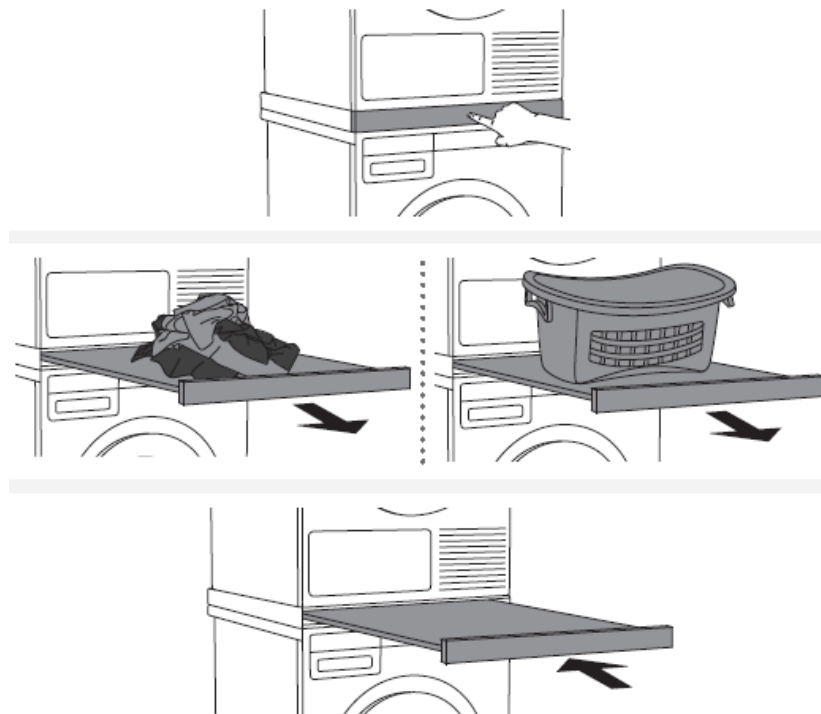


3. The hidden helper can be installed onto a washing machine or onto a dryer.
 - Attach the anti-tip bracket (B) onto the hidden helper and make sure it is aligned with the washing machine and dryer.
4. Final installation of the hidden helper on a washing machine or dryer, from the back.



Before tightening the anti-tip bracket, make sure the edges of the hidden helper are accurately aligned with the edges of the washing machine or dryer.

USING A HIDDEN HELPER



1. Press on the hidden helper to open it.
2. Pull the shelf out towards you.
3. After use, push the shelf back inside the hidden helper.

Gorenje, Partizanska 12, 3320 Velenje, Slovenija www.asko.com

Product Information

Specifications

- **Type:** Pull-out shelf
- **Colour:** White
- **Height:** 4.8 cm
- **Installation type:** Integrated
- **Shell surface:** Laminate

Key Features

- Push-to-open mechanism for easy access
- Ergonomic height for convenient loading and unloading of laundry

Use and Flexibility

- Push/pull opening design for user convenience
- Maximum load capacity: 10 kg
- Integration with washer and dryer for seamless laundry workflow

Dimensions

Appliance dimensions (H x W x D): 4.8 / 59.5 / 56.5 mm

Product Usage Instructions

Installation

1. Ensure the area for installation is clear and level.
2. Slide the pull-out shelf into the designated integrated space.
3. Secure the shelf in place according to the installation guidelines provided.

Loading and Unloading Laundry

1. To open, simply push the shelf to access your laundry items.
2. Load your laundry items within the maximum load capacity of 10 kg.
3. For unloading, pull the shelf out gently and remove your laundry with ease.

Maintenance

Regularly clean the shelf surface with a damp cloth to maintain its appearance and functionality.

Frequently Asked Questions

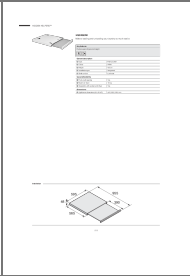
Q: Can this pull-out shelf be used with any washer and dryer?

A: Yes, the pull-out shelf is designed for integration with most washers and dryers for added convenience in your laundry area.

Q: What is the maximum weight capacity of this pull-out shelf?


A: The pull-out shelf can support a maximum load of 10 kg, ensuring you can store a significant amount of laundry items.


Documents / Resources

	HIDDEN HELPERS HSS1053W Pull Out Shelf [pdf] Owner's Manual HSS1053W, HSS1053W Pull Out Shelf, HSS1053W, Pull Out Shelf, Shelf
---	---

References

- [User Manual](#)

 HIDDEN
HELPERS

 Hidden Helpers, HSS1053W, HSS1053W Pull Out Shelf, Pull Out Shelf,
Shelf

—

Leave a comment

Your email address will not be published. Required fields are marked *

Comment *

Name

Email

Website

☐ Save my name, email, and website in this browser for the next time I comment.

Post Comment

Search:

e.g. whirlpool wrf535swhz

Search

[Manuals+](#) | [Upload](#) | [Deep Search](#) | [Privacy Policy](#) | [@manuals.plus](#) | [YouTube](#)

This website is an independent publication and is neither affiliated with nor endorsed by any of the trademark owners. The "Bluetooth®" word mark and logos are registered trademarks owned by Bluetooth SIG, Inc. The "Wi-Fi®" word mark and logos are registered trademarks owned by the Wi-Fi Alliance. Any use of these marks on this website does not imply any affiliation with or endorsement.