

HFSECURITY HF-X05 Biometric Time Attendance and Access Control Terminal



# HFSECURITY HF-X05 Biometric Time Attendance and Access Control Terminal User Manual

[Home](#) » [HFSECURITY](#) » HFSECURITY HF-X05 Biometric Time Attendance and Access Control Terminal User Manual 

## Contents

- [1 HFSECURITY HF-X05 Biometric Time Attendance and Access Control](#)
- [2 Product Information](#)
- [3 Product Usage Instructions](#)
- [4 Function Introduction](#)
- [5 Product display](#)
- [6 PROFESSIONAL ACCESS](#)
- [7 Application solution](#)
- [8 SPECIFICATION](#)
- [9 COMMUNICATION](#)
- [10 Documents / Resources](#)
  - [10.1 References](#)
- [11 Related Posts](#)



**HFSECURITY HF-X05 Biometric Time Attendance and Access Control**



## Product Information

### Specifications

- Operating System: Android 11
- Display: 5-inch LCD, 720 x 1280 pixels
- Dimensions: 225mm (L) x 115mm (W) x 11.5mm (H)
- Camera: 5.0MP (RGB Camera); 2.0MP (Infrared Camera)
- Battery: 12V
- Input: RFID, GPS, G-Sensor
- Speaker, Mic, Touch Panel
- Storage: 16GB ROM (Optional 32GB or more), 2GB RAM (Optional 4G or more)
- Temperature: Operating temperature range

### Product Usage Instructions

#### Power On/Off

To power on the device, press and hold the power button until the screen lights up. To power off, press and hold the power button and follow the on-screen prompts.

#### Camera Usage

The device is equipped with a 5.0MP RGB camera and a 2.0MP Infrared camera. Use the camera app to capture images or videos.

#### Storage

You can store data in the internal storage provided. Make sure to manage your storage space efficiently to avoid

running out of space.

### **Connectivity**

Insert a SIM card into the designated slot for 4G support. Configure network settings for internet connectivity.

### **Frequently Asked Questions (FAQ)**

- **Q: How do I update the device software?**

A: To update the device software, go to Settings > System > Software Update and check for any available updates.

- **Q: Can I expand the storage capacity?**

A: Yes, you can expand the storage capacity by inserting a microSD card into the provided slot.

### **IRIS AND FACE RECOGNITION**

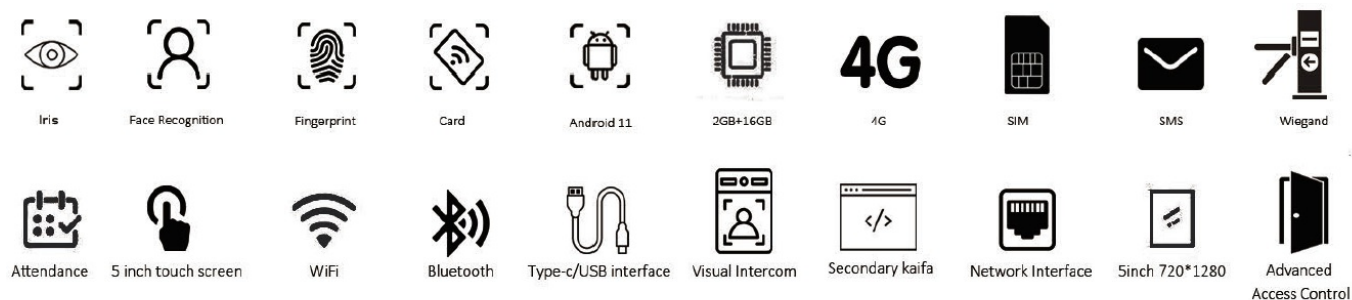
MULTI-FUNCTION IDENTIFICATION/HIGH SECURITY/WATERPROOF AND DUSTPROOF



### **Function Introduction**

- New product X05, delicate outlooking design, metal shell, frosted texture. Advanced access control function, fully open for programming with Android 11 system. High compatibility and stability.
- Multi recognition including face, card, and fingerprint recognition, with a 20,000 large capacity, can be applied to different scenes.

- Attendance, security and access control integrated machine. With video intercom let you know the company's affairs anytime and anywhere, and the SMS function for school solutions allows parents and teachers to know whether the students are in school at any time.



## Product display



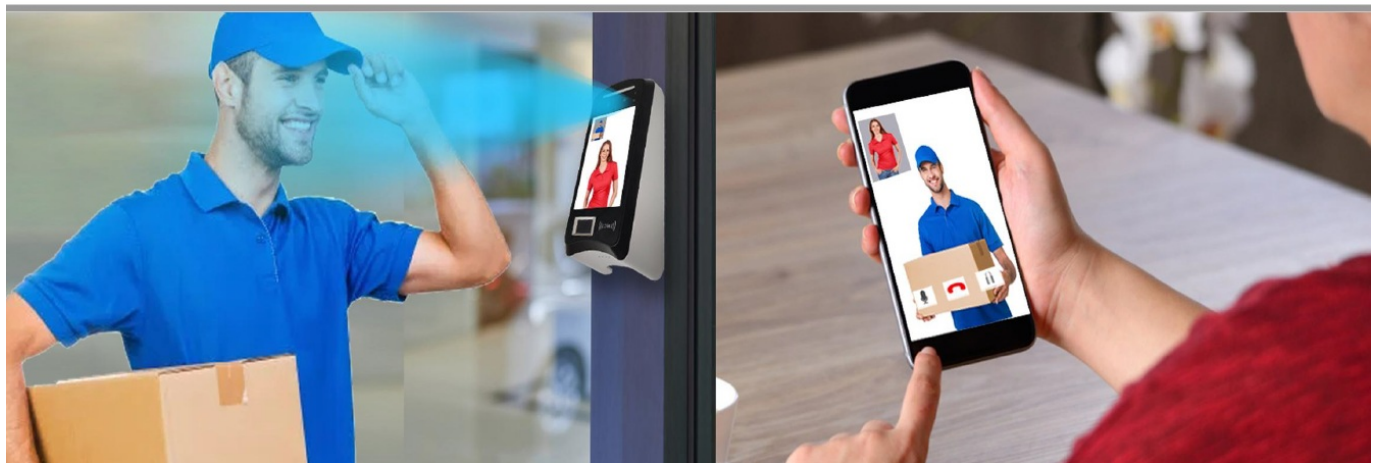
## Identify



**Radio Frequency Identification**  
Support ISO/IEC14443  
ID card / UHF RFID Optional  
Type A & B, 13.56MHz



**Fingerprint Recognition**  
Capacitive fingerprint sensor  
Support ANSI 378/381,  
ISO 19794-2/-4, W50



## PROFESSIONAL ACCESS

### CONTROL TO ENSURE PROPERTY SECURITY

Anti-disassembly, door not closed alarm, slope alarm, alarm linkage, fire alarm, Wiegand 26/34/37/56/68/72/RS485/RS232/input and output, personnel authority management





### **SUPPORT POE POWER SUPPLY NETWORK CABLE POWER CORD 2-IN -1**

Realize network cable power supply, no power supply 1 a network cable can be connected

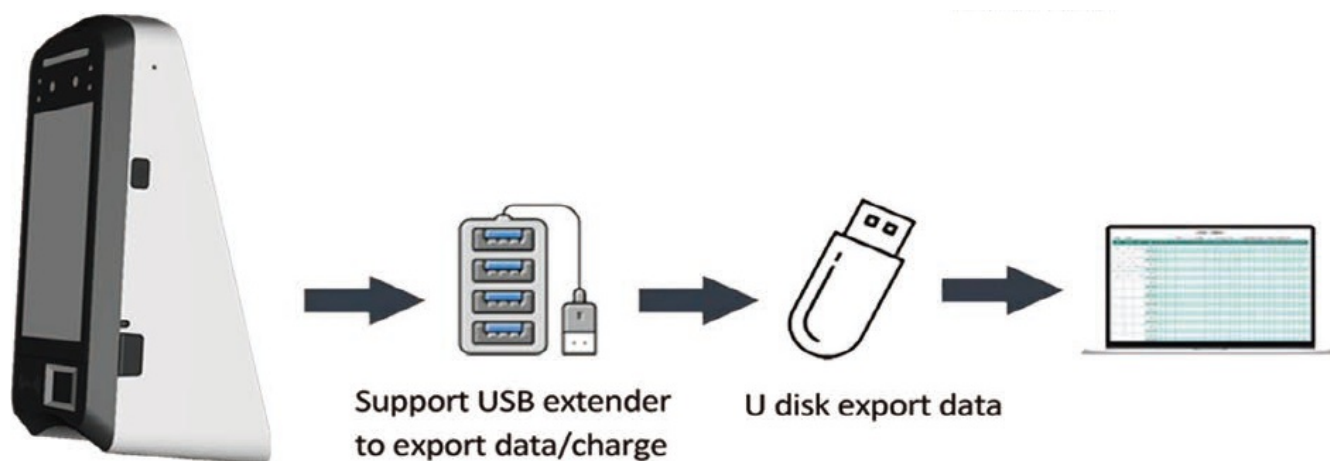


### MULTIPLE METHODS

Support U disk, TCP/IP, Type-C to export attendance data

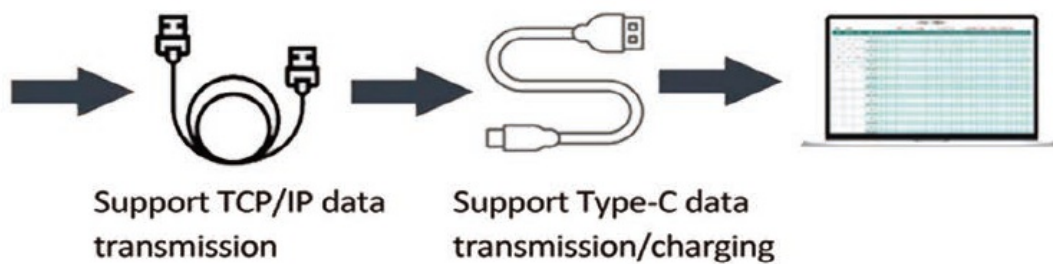
### USB EXTENDER/U DISK EXPORT ATTENDANCE REPORT

Can import/export, manage attendance data

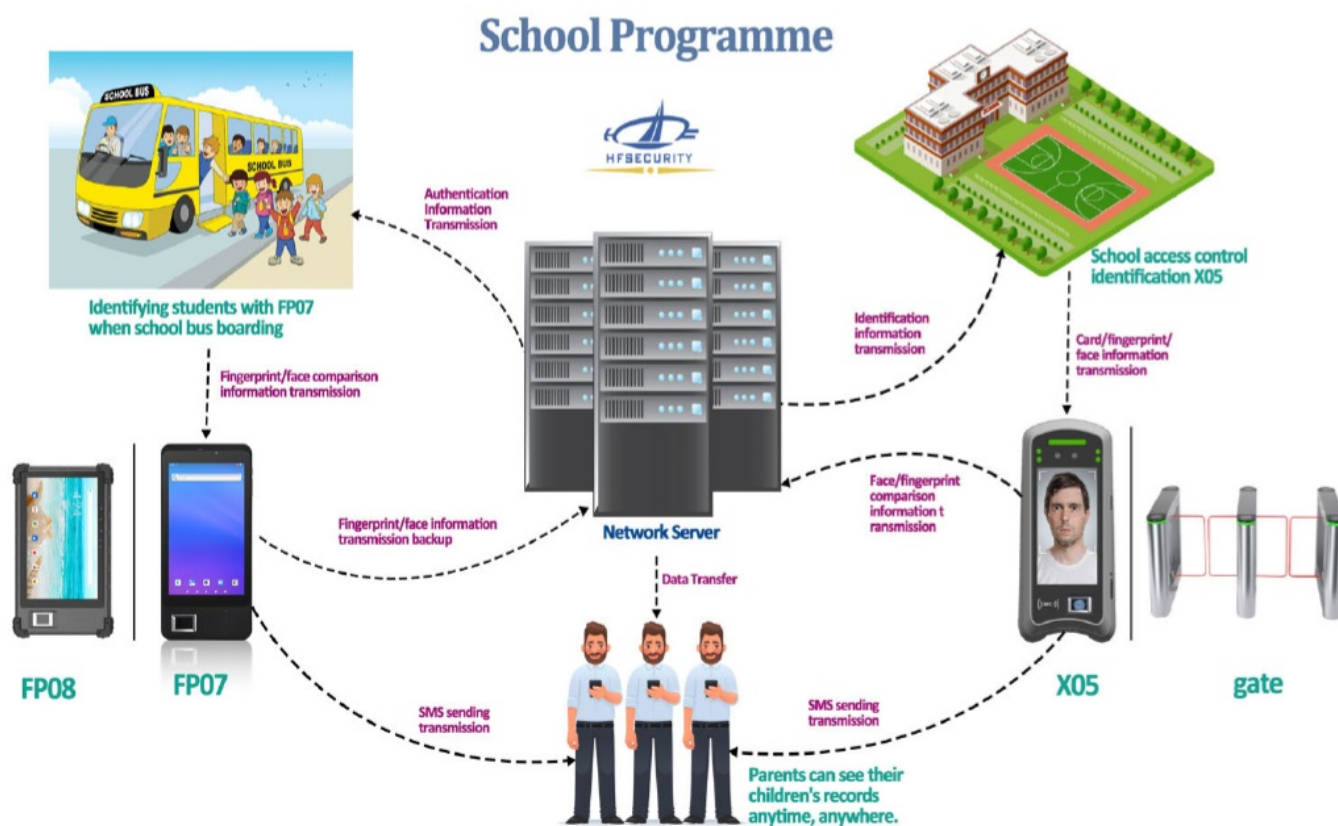


### SUPPORT TCP/IP, TYPE-C ATTENDANCE DATA TRANSMISSION

Support TCP/IP, Type-C import/export data, attendance management

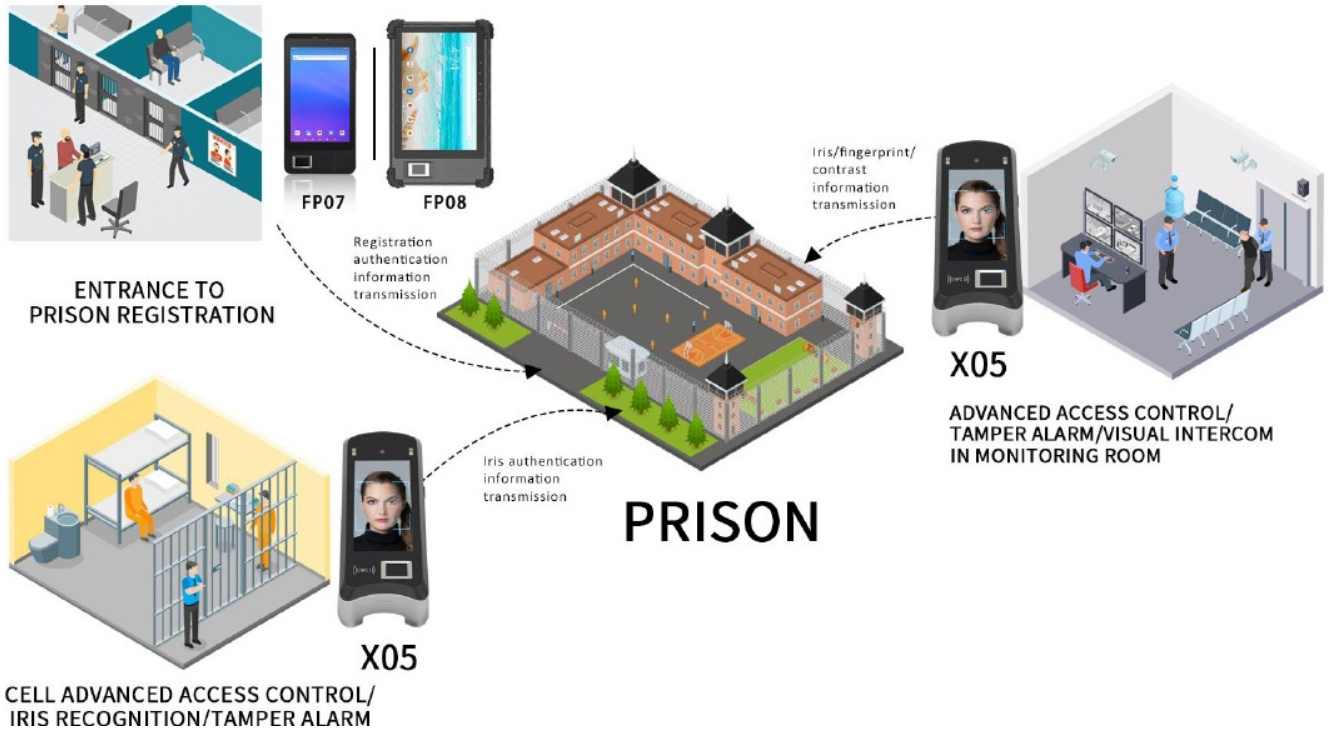


## Application solution

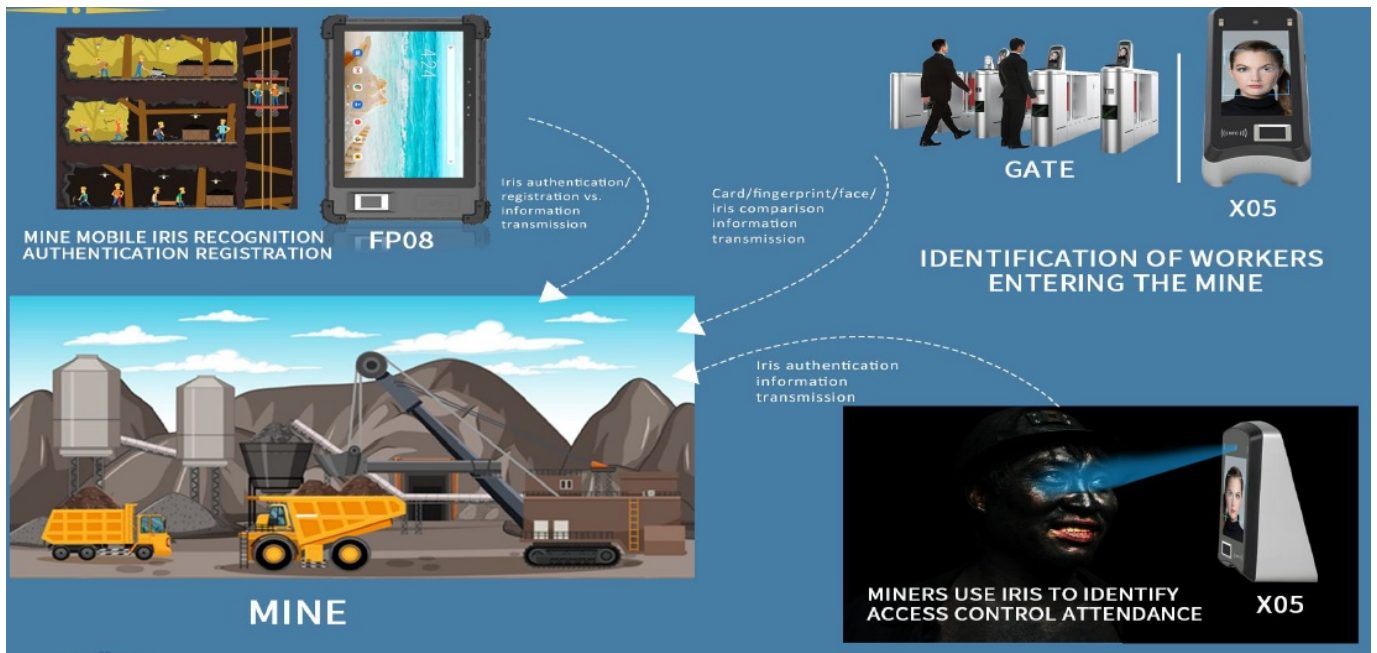




# PRISON PROGRAM



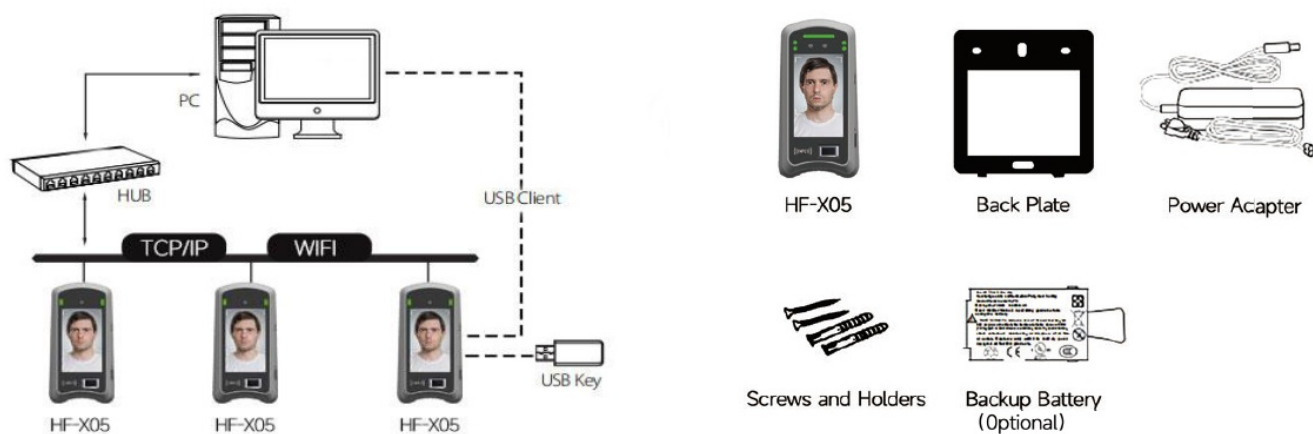
## MINE SCHEME



## BANK PLAN



## Configuration



## SPECIFICATION

OS	Android 11
LCD	5inch 720*1280
Dimension	225mm(L)*115mm(W)*11.5mm(H)
Camera	5.0M (RGB Camera); 2.0M (Infrared Camera)
Battery	Support DC 4.3V 3000mAh
12V Input	Support
RFID	Support ISO/IECC1443 Type A&B, 13.56MHz
GPS	Support
G-Sensor	Gravity acceleration sensor
Speaker	Built-in stereo speaker 8 •1.5W
Mic	Built-in microphone
Touch Panel	Capacitive panel, multi-point touch, G+G -
Storage Temperature	5°C-60°C

## HARDWARE

- CPU MT8768, Octa-core 2.3GHz 2GB
- RAM 2G (Optional 4G or more)
- ROM 16GB (Optional 32G or more)
- OTA Support

## OTHER

- Standard CE, FBI, GMS
- ODM Logo
- Protective silicone cover Optional

## CARD SLOT

- SIM Card 1\* SIM card slot, 4G
- SMS Support

## Iris camera

CMOS photosensitive chip 1/2.8sensor  
Maximum resolution 1920(H)x1080(V)  
Sensor Pixel Dimensions 2.9um x 2.9um

Image transmission rate	1920*1080/30fps
Distortion	TVDistortion<1.0%
CRA	<23.58°
Lens temperature range	-20°/+80°
Lens structure	2P+2G
Focus distance	37cm
Depth of field	32~42CM
Video output compression format	MJPEG/YUY
Working wavelength	810nm
Dynamic range	60dB

## FINGERPRINT T SENSOR

- Sensor FBI Certificated Fingerprint Sensor(FAP10)
- Image Resolution 508DPI
- Image Area 18.00mm\*12.80mm
- Image Size 256\*360 pixels
- Gray Scale 5-bit(256levels)

- Standard Support ANSI378/381, ISO19794-5/-4
- Image Format WSQ, RAW, jpg, etc
- API Calling for 1-to-N Matching Support

## COMMUNICATION

Wi-Fi	2.4GHz / 5.0GHz
Bluetooth	Bluetooth 5.0
USB	USB-A; Micro USB
POE	Support
Wiegand	26/34/37/56/64/input&outputRS232/RS485
NO NC COM Button	Support
Doorbell	Support
Open button	Support
Door Magnet	Support
RJ45 LAN	Support

### Headquarters: Chongqing Huifan Technology Co., Ltd.

D-13,Dongli International Building Longtousi, Yubei District, Chongqing, China.

### Branch: Shenzhen BIO Technology Co., Ltd.

Room 301-305,No.30, Jianlong Industrial Zone, Henggang, Longgang District, Shenzhen

- [www.hfsecurity.cn](http://www.hfsecurity.cn)
- [www.hfteco.com](http://www.hfteco.com)



[Info@hfcctv.com](mailto:Info@hfcctv.com)



[www.hfsecurity.cn](http://www.hfsecurity.cn)  
[www.hfteco.com](http://www.hfteco.com)

#### **FCC Warning**

This equipment has been tested and found to comply with the limits for a Class B digital device, pursuant to part 15 of the FCC Rules. These limits are designed to provide reasonable protection against harmful interference in a residential installation. This equipment generates, uses and can radiate radio frequency energy and, if not installed and used in accordance with the instructions, may cause harmful interference to radio communications. However, there is no guarantee that interference will not occur in a particular installation. If this equipment does cause harmful interference to radio or television reception, which can be determined by turning the equipment off and on, the user is encouraged to try to correct the interference by one or more of the following measures:

- Reorient or relocate the receiving antenna.
- Increase the separation between the equipment and receiver.
- Connect the equipment into an outlet on a circuit different from that to which the receiver is connected.
- Consult the dealer or an experienced radio/TV technician for help.

**Caution:** Any changes or modifications to this device not explicitly approved by manufacturer could void your authority to operate this equipment.

This device complies with part 15 of the FCC Rules. Operation is subject to the following two conditions:

1. This device may not cause harmful interference, and
2. This device must accept any interference received, including interference that may cause undesired operation.

This equipment complies with FCC radiation exposure limits set forth for an uncontrolled environment. This equipment should be installed and operated with minimum distance 20cm between the radiator and your body.





## [HFSECURITY HF-X05 Biometric Time Attendance and Access Control Terminal](#) [pdf] User Manual

HF-X05, HF-X05 Biometric Time Attendance and Access Control Terminal, Biometric Time Attendance and Access Control Terminal, Time Attendance and Access Control Terminal, Attendance and Access Control Terminal, Access Control Terminal, Control Terminal, Terminal

## References

- [Home - HFSecurity biometric solution](#)
- [Home - HFSECURITY Biometric Solution](#)
- [User Manual](#)

### Manuals+, Privacy Policy

This website is an independent publication and is neither affiliated with nor endorsed by any of the trademark owners. The "Bluetooth®" word mark and logos are registered trademarks owned by Bluetooth SIG, Inc. The "Wi-Fi®" word mark and logos are registered trademarks owned by the Wi-Fi Alliance. Any use of these marks on this website does not imply any affiliation with or endorsement.