




HFCL ion4x_2 Access Point User Guide

[Home](#) » [HFCL](#) » HFCL ion4x_2 Access Point User Guide 

Contents

- [1 HFCL ion4x_2 Access Point](#)
- [2 Introduction](#)
 - [2.1 Packaging Content](#)
- [3 ion4x 2 Specifications](#)
- [4 Product Overview](#)
- [5 Wall Mount](#)
- [6 Getting the ion4x 2 Online](#)
 - [6.1 Step 1:](#)
 - [6.2 Step 2:](#)
 - [6.3 Step 3:](#)
- [7 Safety Precautions](#)
- [8 Documents / Resources](#)
- [9 Related Posts](#)

HFCL

HFCL ion4x_2 Access Point



Introduction

Thank you for purchasing our ion4x_2 Access Point. ion4x_2 is a cloud-managed 2x2:2 MU-MIMO Wi-Fi 6 certified Access Point that raises the bar for wireless performance and efficiency.

Packaging Content



ion4x_2
Access Point
(Qty:1)



Quick Start Guide
(Qty:1)



Mounting Kit
(Pole Clamp (1), L Plate(1), U Bolt (1),
Hex nut (4), Screws (4))

- Mounting Kit
- (Pole Clamp (1),
- L Plate(1),
- U Bolt (1),
- Hex nut (4),
- Screws (4)

ion4x 2 Specifications

- **Peak Throughput(aggregate):** Up to 1.78 Gbps (1202 Mbps for 5 GHz and 574 Mbps for 2.4 GHz)
- **W-Fi Standard Support** |802.11a/b/g/n/ac/ac Wave 2/ax
- **Interface**
 - 1 X 10/100/1000 BASE-T Ethernet
 - 1 X 2500 Base X Optical Ethernet SFP
- **Radio Mode:** 2x2 MU-MIMO with 2 spatial streams
- **Mesh Support:** Self-creating, Self-healing EasyMesh
- **Maximum number of SSID:** 16
- **Maximum User Support** 1024 clients per Access Point |(512 clients per radio)
- **Power Supply** IEEE 802.3at PoE/PoE+
- **Power Consumption** (Max) 17W (approx.)
- **Max Transmit Power** 30 dBm for 2.4 GHz, 30 dBm for 5 GHz (will depend on country-specific guidelines)

- **Antenna Type** Integrated directional antennas with 60°H & 15°V beamwidth
- **Antenna Gain** 14 dBi for 5 GHz, 14 dBi for 2.4 GHz
- **Management Standalone** (via GUI) or through on-premise based solution or cloud-based
- **Enclosure Dimensions** 374 x 217 x 87 mm or 14.7 x 8.5 x 3.43 inches
- **Weight** 1.82 Kg
- **Operating Temperature** 15°C to 60°C
- **Certifications** FCC Class A, CE, Passpoint 2.0, EasyMesh, WPA3, IP67, RoHS 3.0

Product Overview

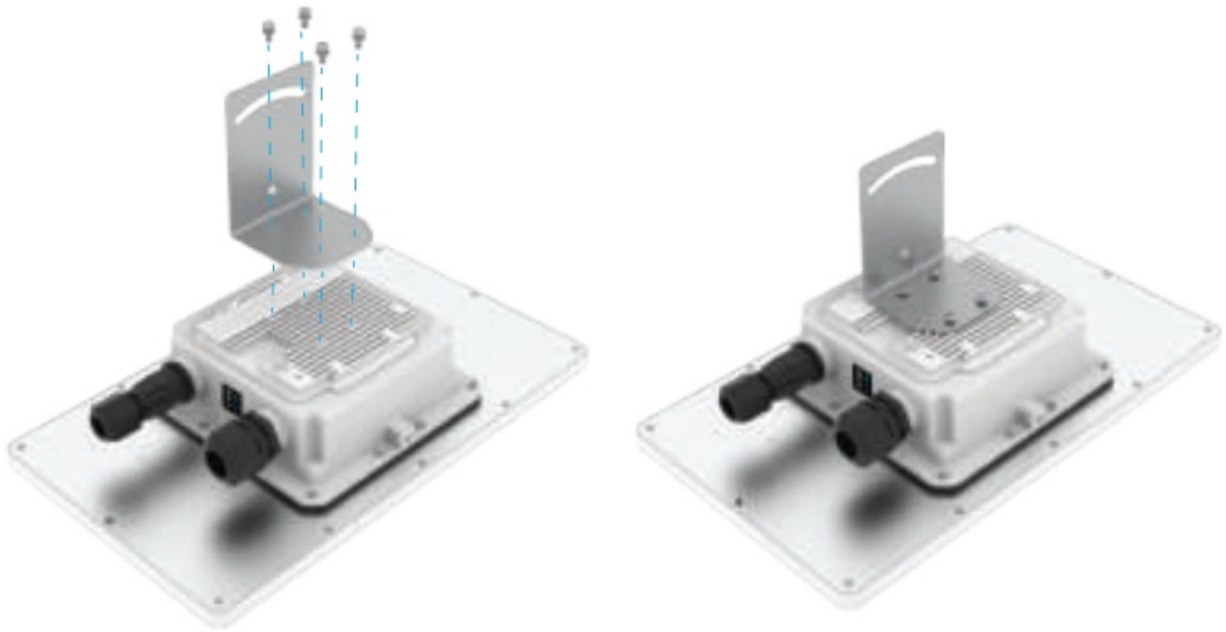


Mounting of ion4x_2 Access Point

The ion4x_2 can be mounted on a pole or to a wall. Perform the following steps for appropriate installation.

1. Align L Plate with the holes at the back of Access Point
2. Use the provided screws to fix the plate onto the Access Point.

The Access mounting Point bracket is fixed onto the mounting holes on the



Pole Mount

1. Align the L Plate mounted Access Point with pole clamp & U-Bolt
2. Pass the U-Bolt through the cuts of pole clamp & L Plate. Secure it in place with Hex Nuts.



3. Access horizontal Point axis has the freedom of movement along with the vertical & horizontal axis



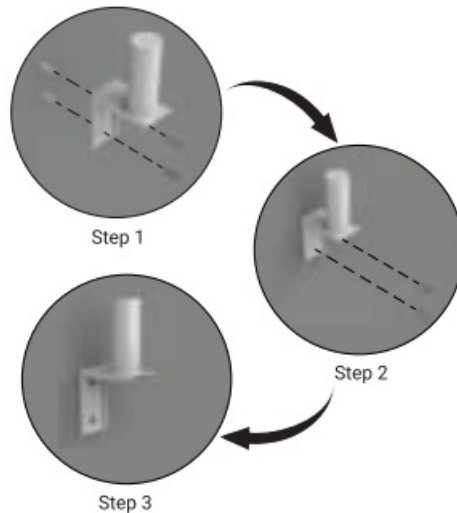
4. The final alignment of Access Point on a pole mounting as shown below



Note: The pole mounting is designed for poles of diameter 40 mm to 60 mm. For mountings on larger size poles upto 140 mm, contact at iosales@hfcl.com

Wall Mount

To mount the ion4x2 on a wall, use the wall mounting bracket, drywall screws, and screw anchors (* The entire wall mounting assembly is sold seperately).



1. Take the reference from the wall mounting bracket and mark the position of the holes on the wall
2. Use the drill machine to drill 2 holes on respective marked positions.
3. Push the screw anchors into the holes with a hammer.
4. Align the drilled holes with the holes of wall mounting bracket.
5. Insert the drywall screws through the holes of mounting bracket into the wall.
6. Wall mounting bracket is fixed to the wal.
7. Mount the device on to the wall mounting bracket as discussed in Dole mountina process.



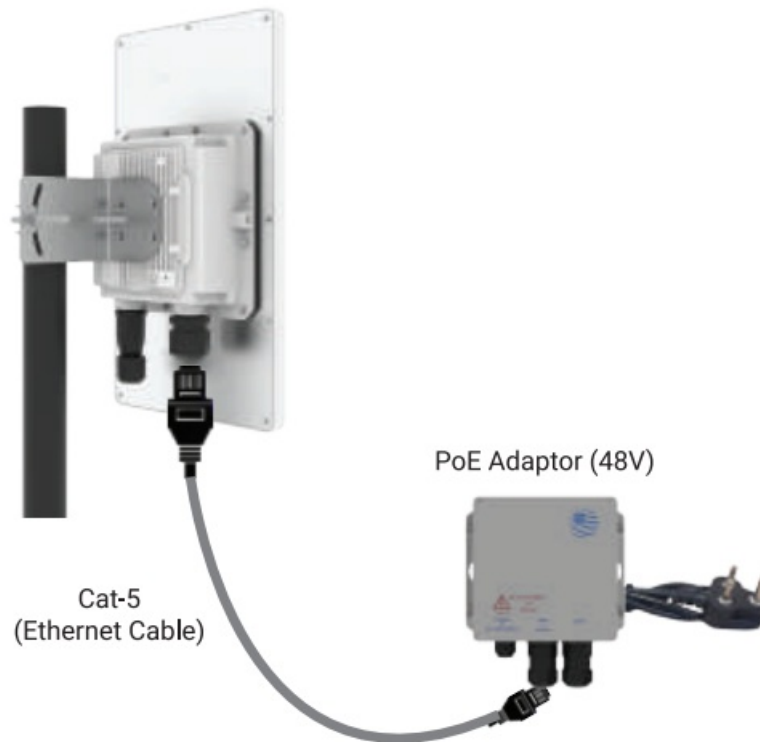
WARNING: HFCL is not held liable for any damages incurred during the process.

Getting the ion4x 2 Online

Step 1:

Power up

The Access Point can be powered up using PoE adaptor (48v) as shown below:



Note: Plug and Adaptor will vary by country/ region

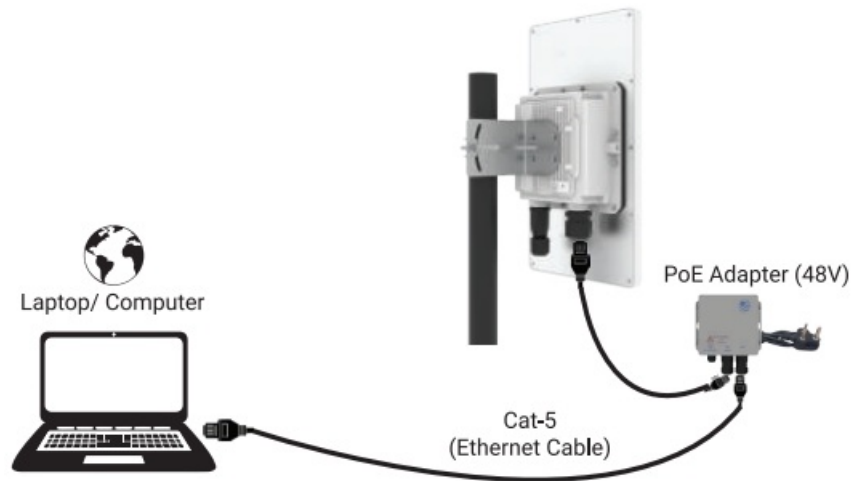
Step 2:

Connect to the network

Section 1: Standalone AP

Follow the steps mentioned below and connect the Access Point to a network

1. Connect an ethernet cable to the computer.
2. Connect the other end of ethernet cable to the data port on PoE adapter (48V)
3. Connect ion4x_2 PoE supported ethernet port to PoE adapter power port. Device will be powered on



4. Configure the computer with a same domain static IP 192.168.1.X and a subnet mask of 255.255.255.0 (X is from 2 to 255)
5. Open the web browser and enter the Access Point static IP address in the address bar: 192.168.1.1
6. A login screen will appear
7. Enter the default login credential details:
User- root, Password- hfcl!@ion



Section 2: Controller Managed AAP

Follow the steps mentioned below and connect the Access Point to a network:

1. Power-up the AP through PoE adapter or PoE switch
2. Connect the AP to DHCP network and Internet
3. Login to HFCL I0 cloud controller (cNMs) cnms.ionetworks.in with credentials provided
4. Refer our website io.hfcl.com for detailed information to configure AP through cNMS

Step 3:

Check the LED status



LED Color	Status
Power LED Green	Green color notifies the user that the device is powered ON
2.4 GHzStatus LED	Solid blue color notifies the user that the 2.4 GHz radio is active and blink s while data is being transmitted on 2.4 GHzradio
5 GHzStatus LED	Solid blue color notifies the user that the 5 GHzradio is active and blinks while data is being transmitted on 5 GHzradio

Safety Precautions

Observe the following safety precautions to avoid damage to the ion4x 2 Access Point:

- Do not power the device during installation
- Keep away from high voltage cables
- Do not power off the unit in the middle of an upgrade process
- The gland should be ground facing all the time
- Do not open the enclosure
- Fasten the device tightly
- Make sure the earthing wire is connected properly to the earthing points

Contact Us:

Email: iosupport@hfcl.com

Website: www.hfcl.com


www.io.hfcl.com

8, Commercial Complex, Masjid Moth, Greater Kailash-II, New Delhi- 110048

HFCL Limited All Rights Reserved. 10 Networks and the 10 logo are registered trademarks of HFCL Limited.

Specifications are subject to change without notice.

Documents / Resources

	HFCL ion4x_2 Access Point [pdf] User Guide ion4x_2 Access Point, ion4x_2, Access Point
---	---

Manuals+.