



## HFCL ion4e-T Access Point User Guide

[Home](#) » [HFCL](#) » HFCL ion4e-T Access Point User Guide 



by **HFCL**  
ion4e-T Access Point  
User Guide



**ANYWHERE  
EVERYWHERE**



## Contents

- [1 Introduction](#)
- [2 ion4e\\_T Specifications](#)
- [3 Product Overview](#)
- [4 Mounting of ion4e\\_T Access Point](#)
- [5 Getting the ion4e\\_T Online](#)
- [6 Safety Precautions](#)
- [7 Documents / Resources](#)
- [8 Related Posts](#)

## Introduction

Thank you for purchasing our ion4e\_T Access Point. ion4e\_T is a cloud-managed 2x2:2 MU-MIMO Wi-Fi 5 certified Access Point that raises the bar for wireless performance and efficiency.

## Packaging Content



**ion4e\_T  
Access Point  
(Qty:1)**



**Quick Start Guide  
(Qty:1)**



**Mounting Kit  
(Pole Clamp (1), L Plate(1), U Bolt (1),  
Hex nut (4), Screws (4))**

## ion4e\_T Specifications

Peak Throughput( aggregate)	Upto 1.27 Gbps (867 Mbps for 5 GHz and 400 Mbps for 2.4 GHz)
Wi-Fi Standard Support	802.11a/b/g/n/ac/ac Wave 2
Interface	1X10/100/1000 BASE-T Ethernet
Radio Mode	2x2 MU-MIMO with 2 spatial streams
Mesh Support	Self-creating, Self-healing Mesh
Maximum number of SSID (per radio)	16
Maximum User Support	128 on 5GHz and 64on 2 4GHz
Power Supply	IEEE 802.3af PoE
Power Consumption (Max)	12 W (approx)
Max Transmit Power	23 dBm for 2.4 GHz, 27 dBm for 5 GHz (will depend on country-specific guidelines)
Antenna Type	Option for external antenna
Management	Standalone (via GUI) or through on-premise based solution or cloud-based
Enclosure Dimensions	189x170x71 mm or 7.44x6.69x2.79 inches
Weight	0.75 kg
Operating Temperature	-10°C to 60°C
Certifications	FCC Class A, CE, Passpoint 2.0, 1P67, ROHS 3.0

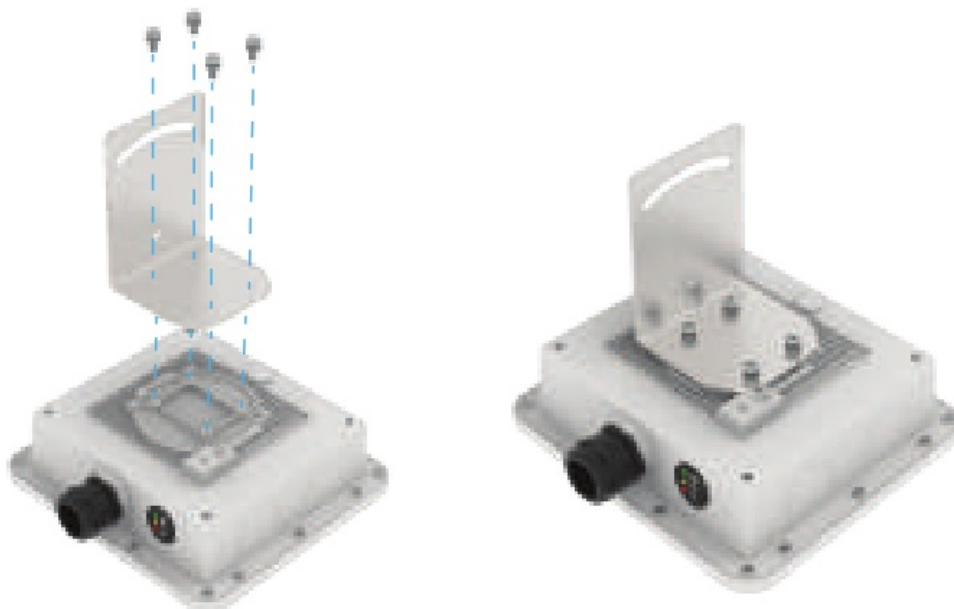
## Product Overview



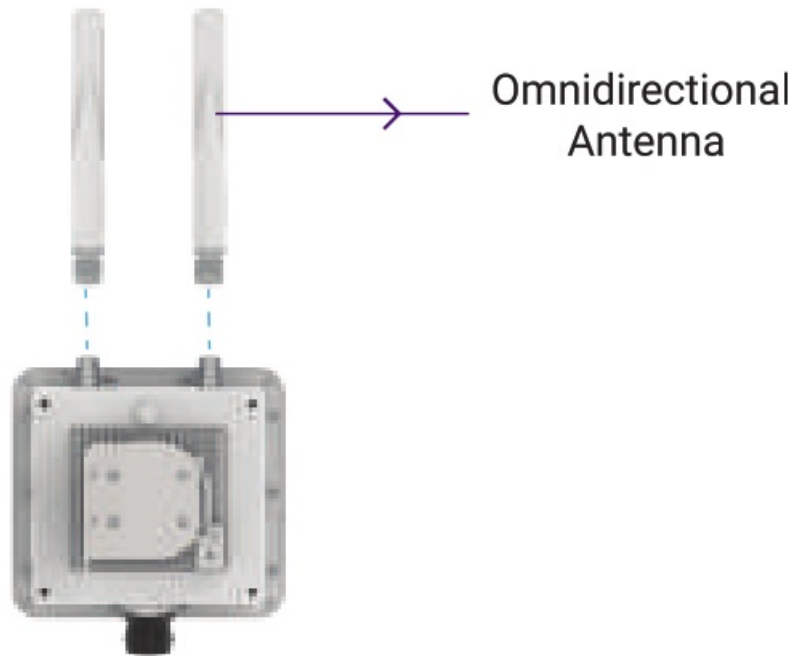
### Mounting of ion4e\_T Access Point

The ion4e\_T can be mounted on a pole or to a wall. Perform the following steps for appropriate installation.

1. Align L Plate with the holes at the back of Access Point
2. Use the provided screws to fix the plate onto the Access Point. The mounting bracket is fixed onto the mounting holes on the Access Point

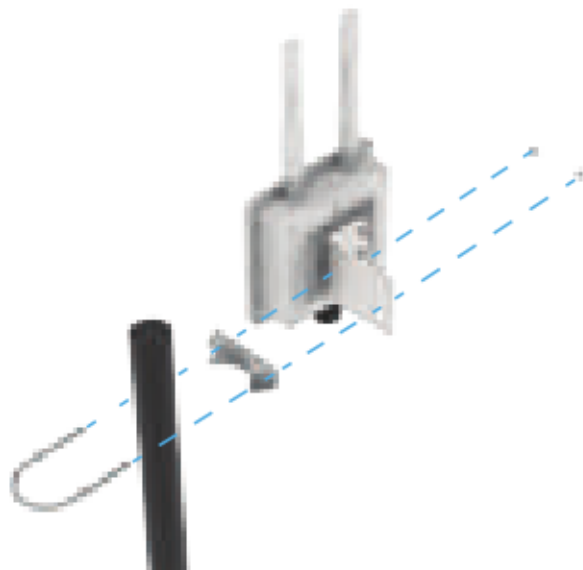


3. Attach omnidirectional antenna on the N Connectors of the Access Point



### **Pole Mount**

1. Align the bracket mounted Access Point with pole holder & U-Bolt
2. Pass the U-Bolt through the cuts of pole holder & mounting bracket. Secure it in place with the screws.



3. Access Point has the freedom of movement along with the vertical & horizontal axis



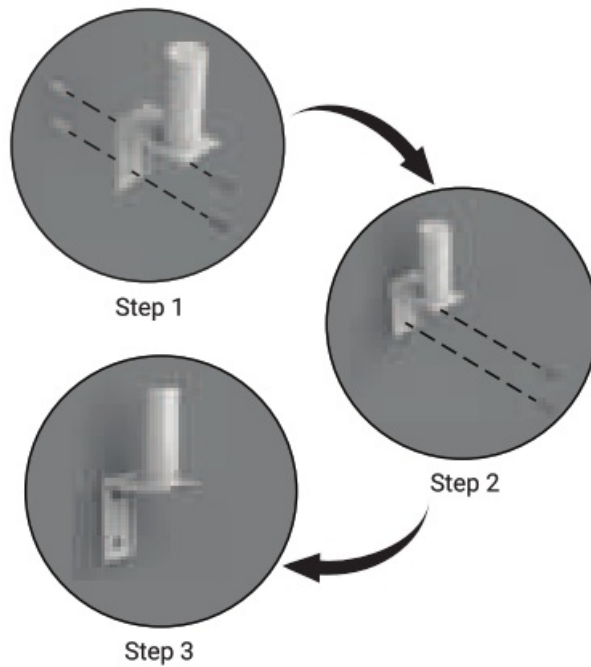
4. The final alignment of Access Point on a pole mounting as shown below



**Note:** The pole mounting is designed for poles of diameter 40 mm to 60 mm. For mountings on larger size poles upto 140 mm, contact at [iosales@hfcl.com](mailto:iosales@hfcl.com)

#### Wall Mount

To mount the ion4e\_T on a wall, use the wall mounting bracket, drywall screws, and screw anchors ( The entire wall mounting assembly is sold seperately).



1. Take the reference from the wall mounting bracket and mark the position of the holes on the wall.
2. Use the drill machine to drill 2 holes on respective marked positions.
3. Push the screw anchors into the holes with a hammer.
4. Align the drilled holes with the holes of wall mounting bracket.
5. Insert the drywall screws through the holes of mounting bracket into the wall.
6. Wall mounting bracket is fixed to the wall.
7. Mount the device on to the wall mounting bracket as discussed in pole mounting process.

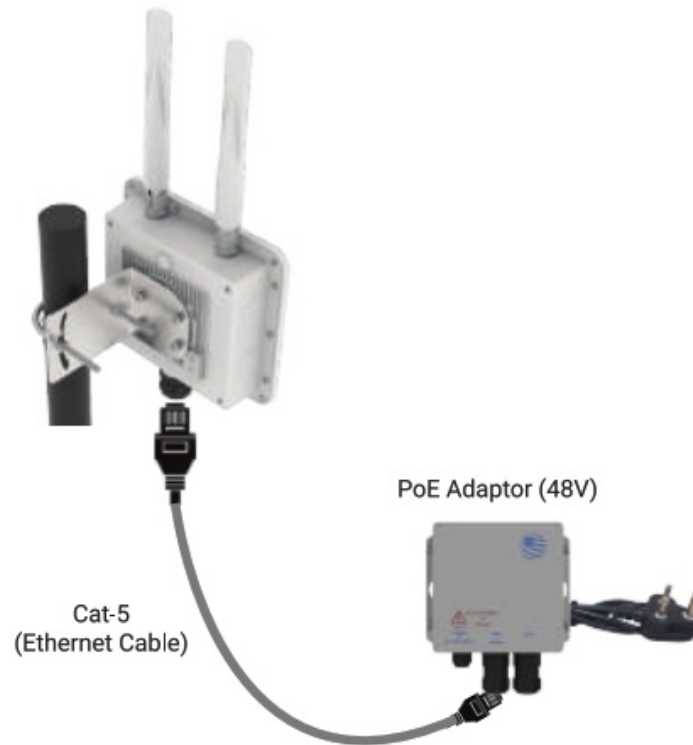


**WARNING:** HFCL is not held liable for any damages incurred during the process.

## Getting the ion4e\_T Online

### Step 1: Power up

The Access Point can be powered up using PoE adaptor (48V) as shown below:



**Note:** Plug and Adaptor will vary by country/region

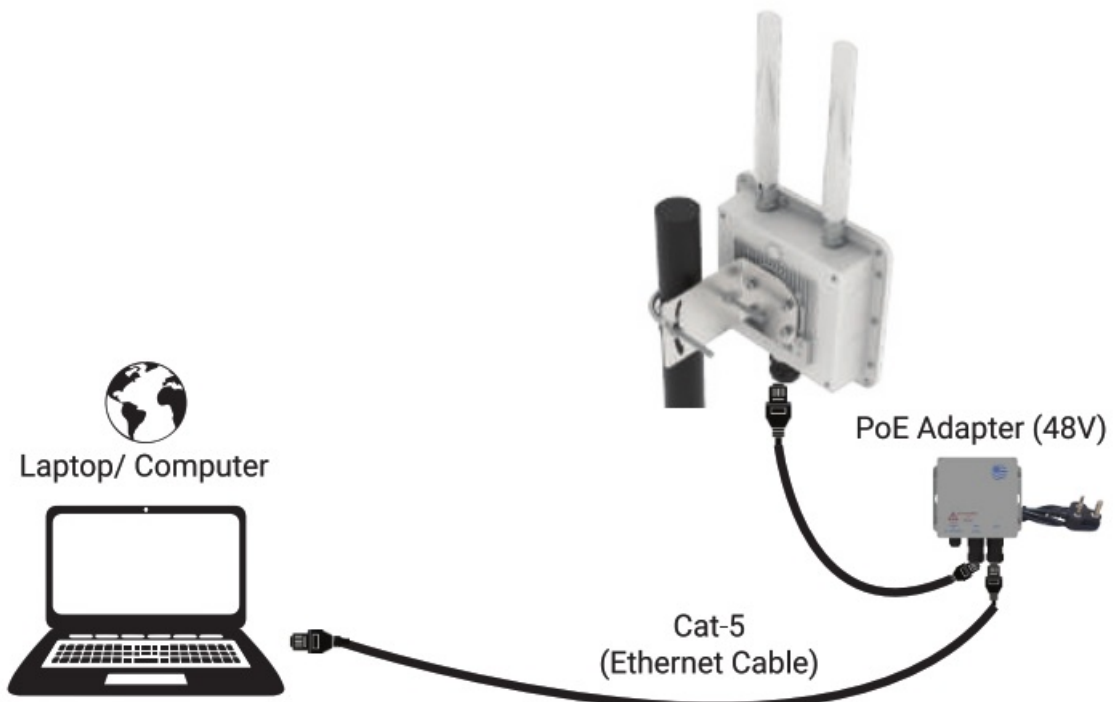
— Power up using PoE Adaptor —

## Step 2: Connect to the network

### Section 1: Standalone AP

Follow the steps mentioned below and connect the Access Point to a network :

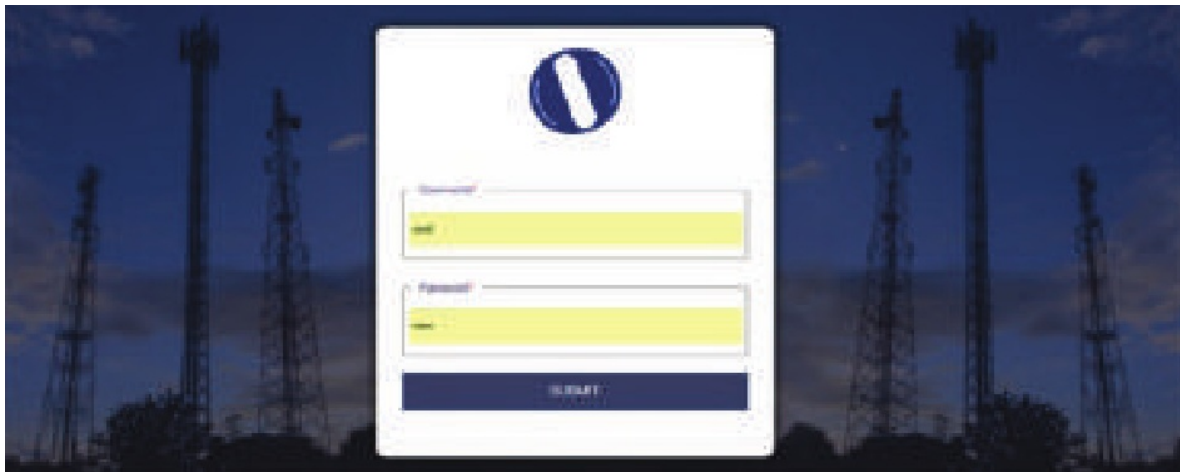
1. Connect an ethernet cable to the computer.
2. Connect the other end of ethernet cable to the data port on PoE adaptor
3. Connect ion4e\_T PoE supported ethernet port to PoE adapter power port. Device will be powered on



4. Configure the computer with a same domain static IP 192.168.1.X and a subnet mask of 255.255.255.0 (X is from 2 to 255)



5. Open the web browser and enter the Access Point static IP address in the address bar: 192.168.1.1
6. A login screen will appear.
7. Enter the default login credential details: User- root, Password- hfcl!@ion



## Section 2: Controller Managed AP

Follow the steps mentioned to connect Access Point to a network:

1. Connect an Ethernet cable to the computer.
2. Power-up the AP through PoE adaptor
3. Connect the AP to DHCP network and Internet
4. Login to HFCL 10 cloud controller (cNMS) [iocloud.hfcl.com](http://iocloud.hfcl.com) with credentials provided.
- 4a. To get cNMS login credential, please send request email to [iosupport@hfcl.com](mailto:iosupport@hfcl.com) with below details

Customer Name	Customer email address	Customer address	Customer contact number	Distributor/ Retailer Name	No.of AP Purchased	Country

5. Add AP group under configuration
6. Add APs in the AP group
7. Create SSID in the AP group
8. Refer our website [io.hfcl.com](http://io.hfcl.com) for detailed information to configure AP through cNMS

## Step 3: Check the LED status



LED Color	Status
Power LED Green	Green color notifies the user that the device is powered ON
2.4 GHz Status LED	Solid yellow color notifies the user that the 2.4 GHz radio is active and blinks while data is being transmitted on 2.4 GHz radio
5 GHz Status LED	Solid red color notifies the user that the 5 GHz radio is active and blinks while data is being transmitted on 5 GHz radio

## Safety Precautions

Observe the following safety precautions to avoid damage to the ion4e\_T Access Point

- ⚠ Do not power the device during installation
- ⚠ Keep away from high voltage cables
- ⚠ Do not power off the unit in the middle of an upgrade process
- ⚠ The gland should be ground facing all the time
- ⚠ Do not open the enclosure
- ⚠ Fasten the device tightly
- ⚠ Make sure the earthing wire is connected properly to the earthing points



by **HFCL**

**Contact Us:**

**Email:** [iosupport@hfcl.com](mailto:iosupport@hfcl.com)

**Website:** [www.hfcl.com](http://www.hfcl.com)

[www.io.hfcl.com](http://www.io.hfcl.com)

8, Commercial Complex, Masjid Moth,  
Greater Kailash-II, New Delhi- 110048



**Part Number:** QSG-01-0020

**Revision;** A

HFCL Limited All Rights Reserved.

IO Networks and the IO logo are registered trademarks of HFCL Limited  
Specifications are subject to change without notice

**Documents / Resources**

	<a href="#">HFCL ion4e-T Access Point</a> [pdf] User Guide ion4e-T Access Point, ion4e-T, Access Point, Point
	<a href="#">HFCL ion4e-T Access Point</a> [pdf] User Guide ion4e-T Access Point, ion4e-T, Access Point, Point

Manuals+.