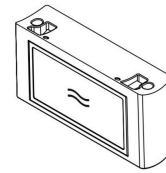


**HEWI**  
802 Upgrade Kit  
Flush Release  
Button Radio  
Control



# HEWI 802 Upgrade Kit Flush Release Button Radio Control Instruction Manual

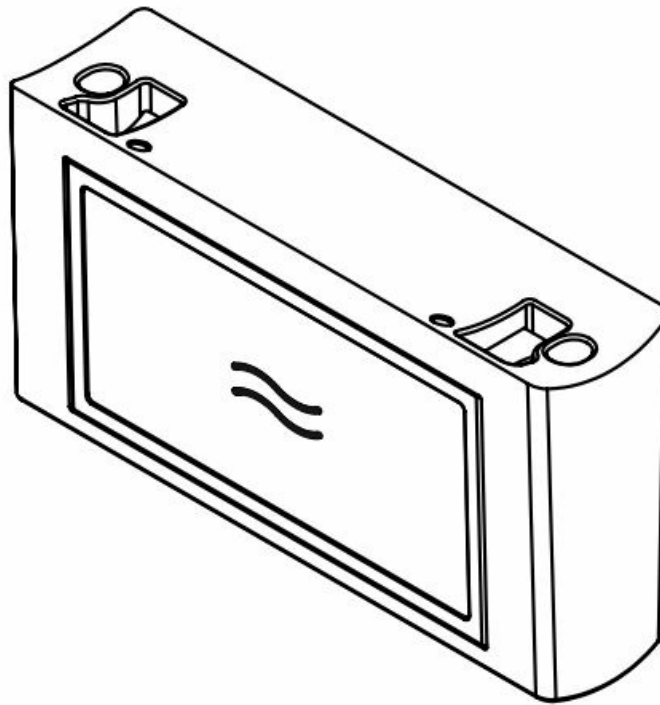
[Home](#) » [HEWI](#) » HEWI 802 Upgrade Kit Flush Release Button Radio Control Instruction Manual 

## Contents

- [1 HEWI 802 Upgrade Kit, Flush Release Button, Radio Control](#)
- [2 Product Specifications](#)
- [3 Product Information](#)
- [4 Product Usage Instructions](#)
- [5 User information](#)
- [6 Product information](#)
- [7 Technical data](#)
- [8 Compatible systems](#)
- [9 Mounting](#)
- [10 Programming](#)
- [11 Battery](#)
- [12 Troubleshooting](#)
- [13 Maintenance](#)
- [14 ABOUT COMPANY](#)
- [15 FAQ](#)
- [16 Documents / Resources](#)
  - [16.1 References](#)
- [17 Related Posts](#)

# HEWI

HEWI 802 Upgrade Kit, Flush Release Button, Radio Control



## Product Specifications

- **Brand:** HEWI
- **Support Contacts:**
  - **Germany:** 0049 5691 82-300
  - **Austria, Switzerland:** 00 800 4394 4394 (Freecall from landline)
  - **UK:** 0044 1634 258200
  - **International:** 0049 5691 82-0
  - **France:** 0033 472 83 09 09
  - **Belgium, Luxembourg, Switzerland (Freecall from landline):** 00 800 4394 4394
  - **Belgium, Luxembourg, Netherlands (Free from landline):** 00 800 4394 4394

## Product Information

HEWI accepts no liability for damage resulting from improper mounting or maintenance. It is recommended to follow the safety instructions provided.

## Product Usage Instructions

### Safety Instructions:

- These instructions are for qualified personnel and users.
- Make instructions available to the user after installation.
- Observe installation and use instructions.
- Contact HEWI support in case of questions or issues.
- The product must be installed, maintained, and repaired by qualified personnel only.
- Check for damage on acceptance and report defects immediately.
- Store the product in a dry place without pressure on top of it.

## **Usage Guidelines:**

- Install and use the product only for its intended purpose.
- Do not modify the product.
- Use original spare parts and HEWI fixing materials.
- Use the product only in closed rooms.

## **Disposal:**

- Dispose of product packaging in commercial collection containers for recoverable materials.
- Dispose of electronic components at a communal collection point for hazardous electrical waste.

## **User information**

### **Exclusion of liability**

HEWI accepts no liability whatsoever for damage to persons or property that occurs or has occurred as a result of improper mounting or maintenance, particularly if the safety instructions and other points to note listed are not or have not been observed in full. HEWI accepts no liability whatsoever for damage occurring from incorrect cleaning.

### **Safety instructions**

These instructions are intended for qualified skilled personnel and the user of the installed product. Following installation, the instructions must be made available to the user.

- Observe the installation instructions and instructions for use.
- Observe the installation instructions and instructions for use of the cistern manufacturer.
- In case of questions, problems, uncertainties, or if damage occurs, contact the HEWI support service.
- Ensure that the product is installed, maintained, and repaired by qualified, skilled personnel only.
- Check the product for damage on acceptance.

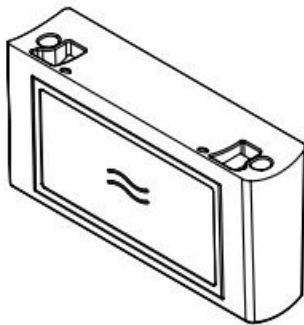
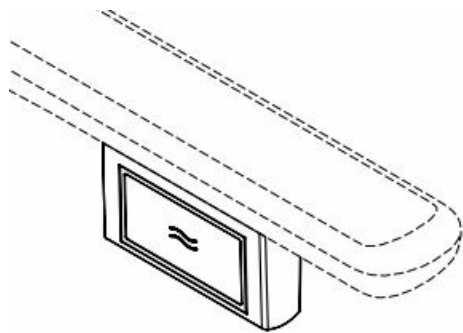
## **Report defects immediately.**

- The product must be stored in a dry place and free from pressure, e.g., no other items stacked on top of it.
- Install/use the product only:
  - by its intended purpose
  - in its original condition without modifications
  - In perfect condition
- Use original spare parts only.
- Use only HEWI fixing materials.
- Only use in closed rooms.

## **Disposal**

- Dispose of product packaging in commercial collection containers for recoverable materials.
- Dispose of electronic components at a communal collection point for hazardous electrical waste.

Product information



802.50.062...  
802.50.063...

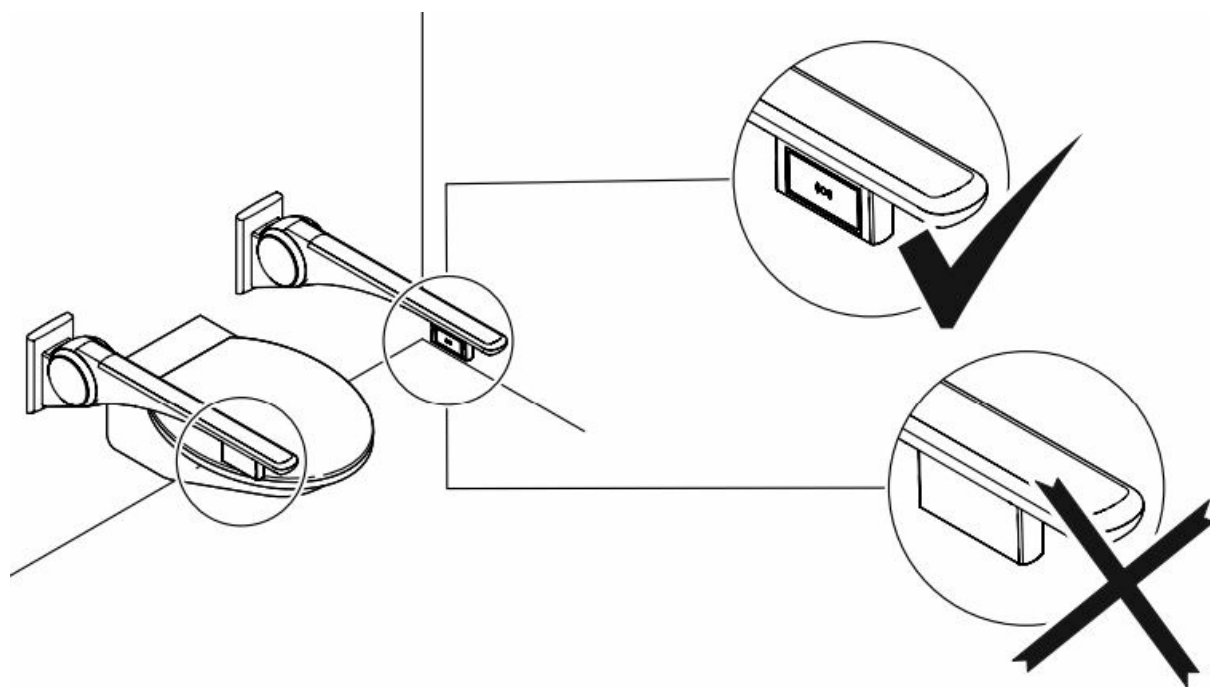
Technical data

Transmission frequency	Transmission output max.	Operating voltage
868,4 MHz	1 mW	1 x lithium button cell CR-2450 (3V)

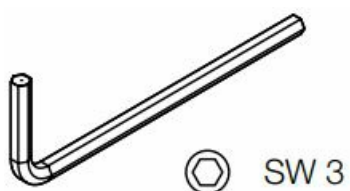
Compatible systems

Geberit	115.867.SN.5	Sanit	03.082.00.0000	
	115.869.SN.5		03.582.00.0000	
	115.897.00.1	Tece	9.240.354	
	115.898.00.1		9.240.255	
Grohe/Grohe dal	38759SD0 491707040	Viega	696177	

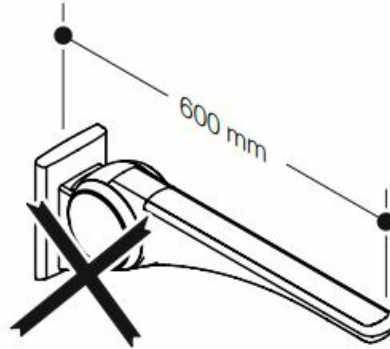
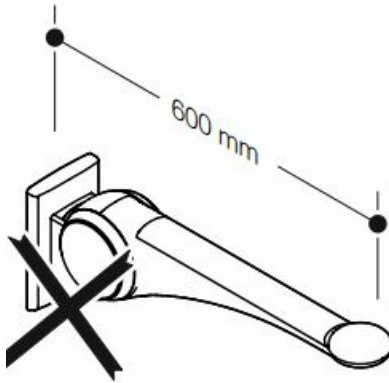
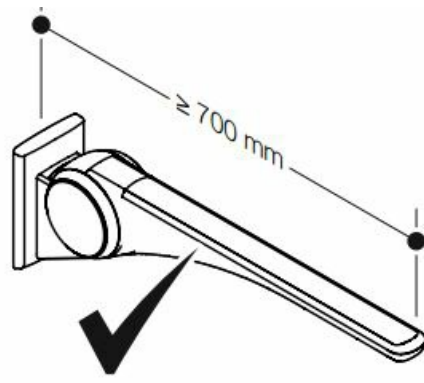
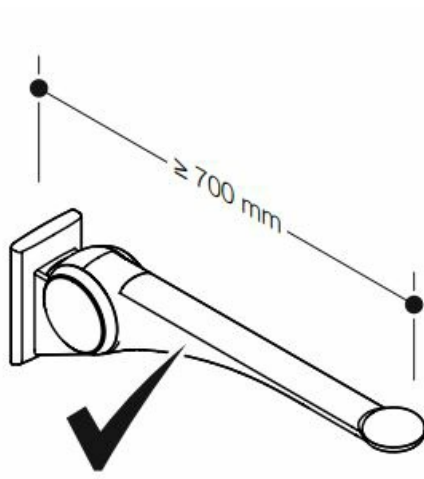
Mounting

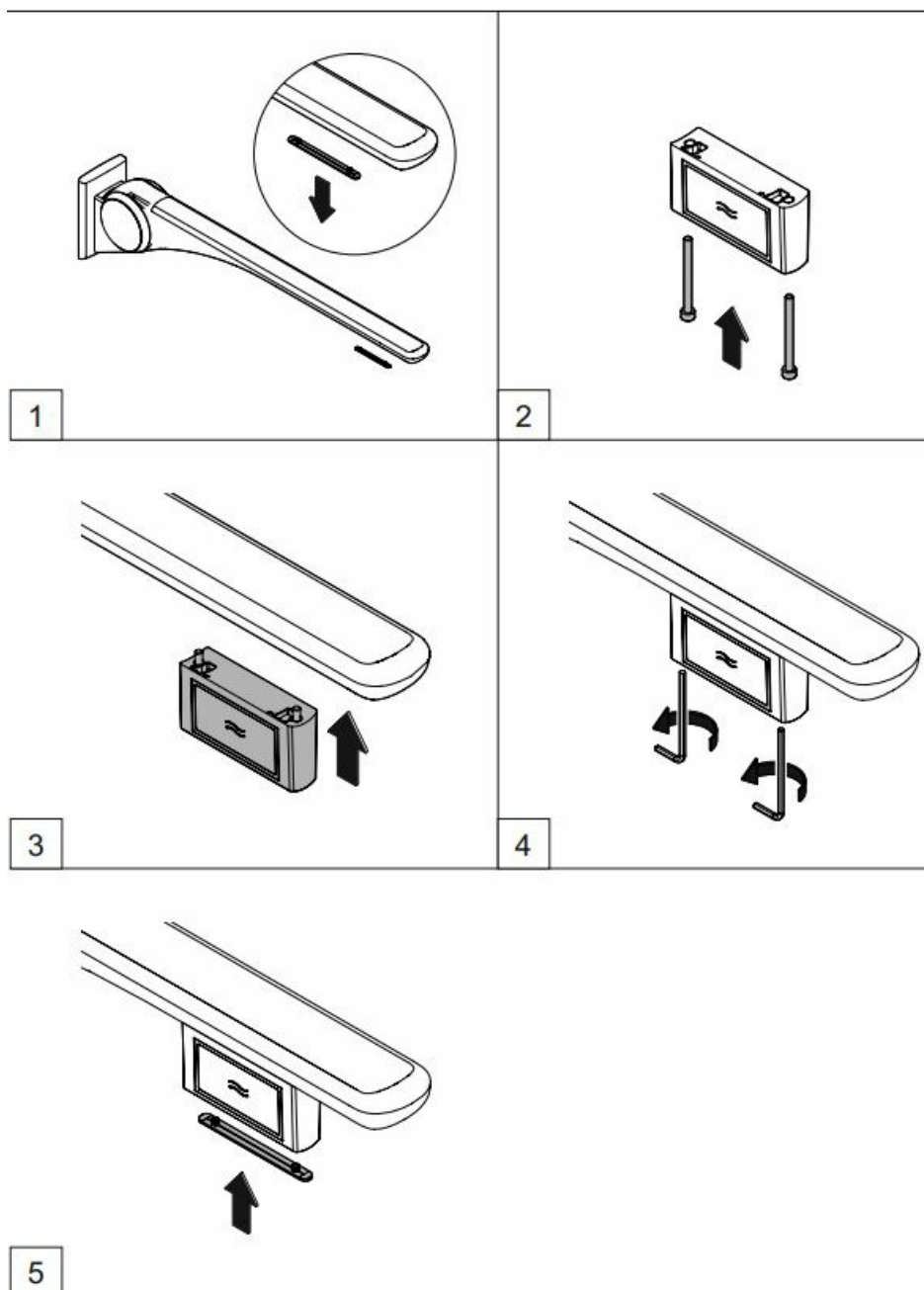


**Tools required**



**Suitable for**





## Programming

### See the cistern manufacturer's instructions!

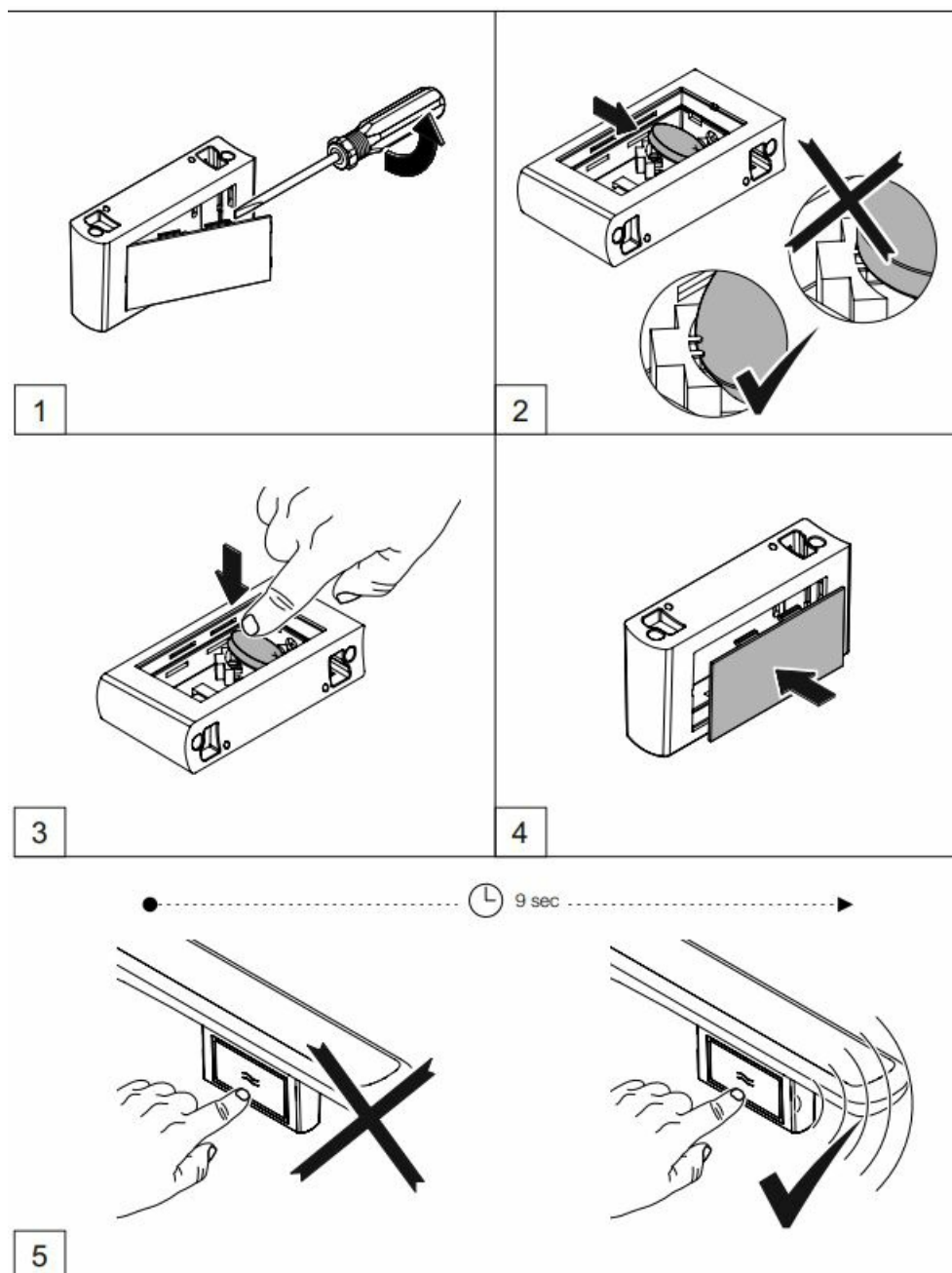
Left and/or right-hand HEWI hinged support rail can be paired with (programmed) the cistern control.

- Allocate one cistern control for a maximum of 2 HEWI hinged support rails.
- Remove the toilet flush operating pabefbeforeer to programming the central control.
- Push button on cistern control and blue button (toilet flush) on HEWI hinged support rail. Same procedure for second HEWI hinged support rail.

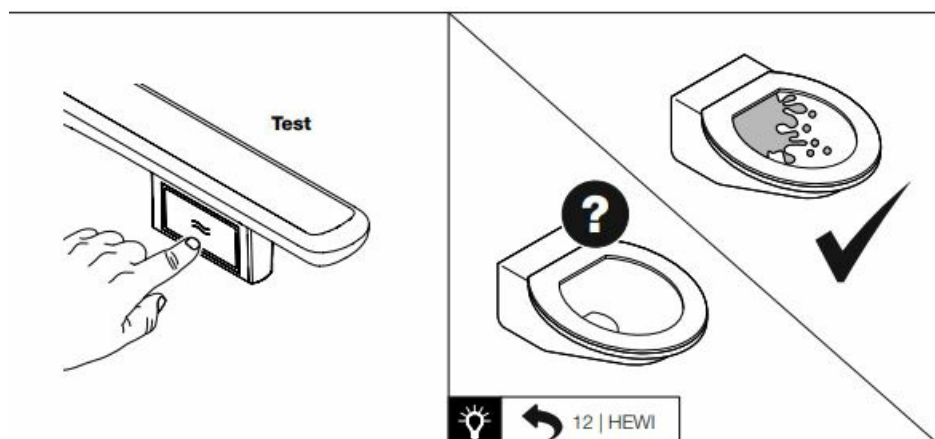
### In case of incorrect programming

- Check the power supply (correct connection and voltage of batteries).
- Delete receiver settings/cut radio connection.
- Pair hinged support rails with cistern control again according to the instructions.

## Battery



## Troubleshooting



## Maintenance



- The product is not maintenance-free!
- Have the product checked once a year by qualified personnel to ensure that it is in perfect working order.
- In case of defects (e.g. changing batteries), take the relevant steps given in the installation and operating instructions.

## HEWI support

- 0044 1634 258200 (UK)
- 0049 5691 82-0 (international)

## ABOUT COMPANY

- GERMANY
- HEWI Heinrich Wilke GmbH
- Prof.-Bier-Straße 1-5
- D-34442 Bad Arolsen
- Phone: +49 5691 82-0
- Fax: +49 5691 82-319
- [www.hewi.com](http://www.hewi.com)
- [international@hewi.de](mailto:international@hewi.de)

## FAQ


- **What should I do if I encounter issues with the product?**

Contact the HEWI support service for assistance with questions, problems, or uncertainties related to the product.

- **Can I use the product in open spaces?**

The product is recommended for use only in closed rooms as per safety guidelines.

## Documents / Resources

 <p>HEWI</p>	<p><a href="#">HEWI 802 Upgrade Kit Flush Release Button Radio Control</a> [pdf] Instruction Manual M8020.41.des, 802 Upgrade Kit Flush Release Button Radio Control, 802, Upgrade Kit Flush Release Button Radio Control, Flush Release Button Radio Control, Release Button Radio Control, Button Radio Control, Radio Control, Control</p>
---	---

## References

- [HEWI Downloadbereich | HEWI](#)
- [User Manual](#)

