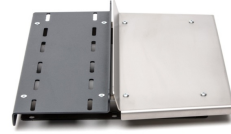


HEUSINKVELD Sprint Baseplate Anthracite



# HEUSINKVELD Sprint Baseplate Anthracite User Guide

[Home](#) » [HEUSINKVELD](#) » HEUSINKVELD Sprint Baseplate Anthracite User Guide 

## Contents

- [1 HEUSINKVELD Sprint Baseplate Anthracite](#)
- [2 Product Usage Instructions](#)
- [3 ASSEMBLE AND MOUNT YOUR BASEPLATE](#)
- [4 ADJUST YOUR HEEL PLATE](#)
- [5 HEEL PLATE SETTINGS](#)
- [6 MOUNT YOUR SPRINT PEDALS](#)
- [7 Documents / Resources](#)
  - [7.1 References](#)
- [8 Related Posts](#)



## HEUSINKVELD Sprint Baseplate Anthracite



## Specifications:

- Compatible with Heusinkveld Sprint pedals
- **Materials:** Metal construction
- **Bolts:** M5x12 countersunk bolts, M5x30 countersunk bolts, M6x12 hexagonal bolts, M6x25 bolts
- **Nuts:** Flanged nuts

## Product Usage Instructions

### 1. Assemble and Mount Your Baseplate:

Start by assembling the brackets on the black pedal mounting plate using M5x12 countersunk bolts and flanged nuts. Make sure the countersunk holes on the pedal plate face upwards and the open side of the C-shaped brackets faces outwards.

### 2. Adjust Your Heel Plate:

Adjust the height of the heel plate to your preference using the M5x12 countersunk bolts and flanged nuts for the lowest position. If you need to increase the height, utilize the metal spacers included with the baseplate along with M5x30 countersunk bolts. Do not use the spacers to raise the pedal plate.

### 3. Heel Plate Settings:

1. **Default setting heel plate:** [Provide details of default setting]
2. **Higher setting heel plate:** [Provide details of higher setting]

### 4. Mount Your Sprint Pedals:

If using Heusinkveld Sprint pedals, slightly loosen the 4 mounting bolts to adjust the pedal position. For a 2-pedal set or 3-pedal set, use hexagonal bolts M6x12 and M6 t-nuts for mounting on an aluminum rig. For other types of pedal plates, use M6x25 bolts and M6 flanged nuts.

### 5. Full Manual & Tutorials:

Find the full manual on our website. Video tutorials are also available at [heusinkveld.com/support/product-manuals](https://heusinkveld.com/support/product-manuals).

## FAQ:

### • Q: Where can I find additional support or assistance?

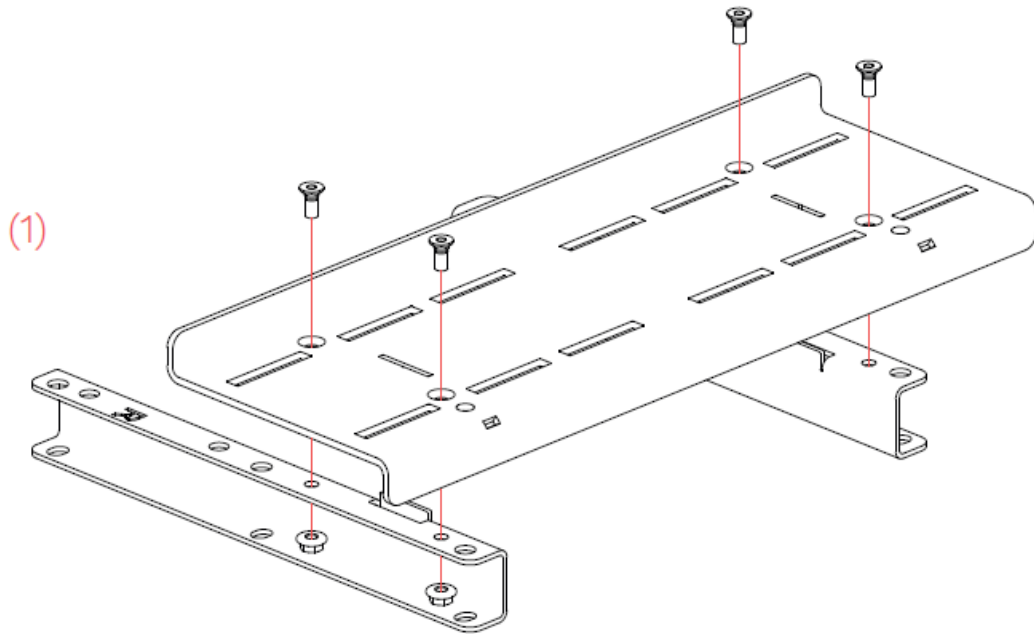
A: If you have any questions about our products or need help with installation, please contact our Support Team at [support@heusinkveld.com](mailto:support@heusinkveld.com).

### • Q: How can I contribute to responsible recycling of the packaging?

A: The packaging is made of paper and cardboard where possible. Please ensure you follow local guidelines for responsible recycling.

## ASSEMBLE AND MOUNT YOUR BASEPLATE

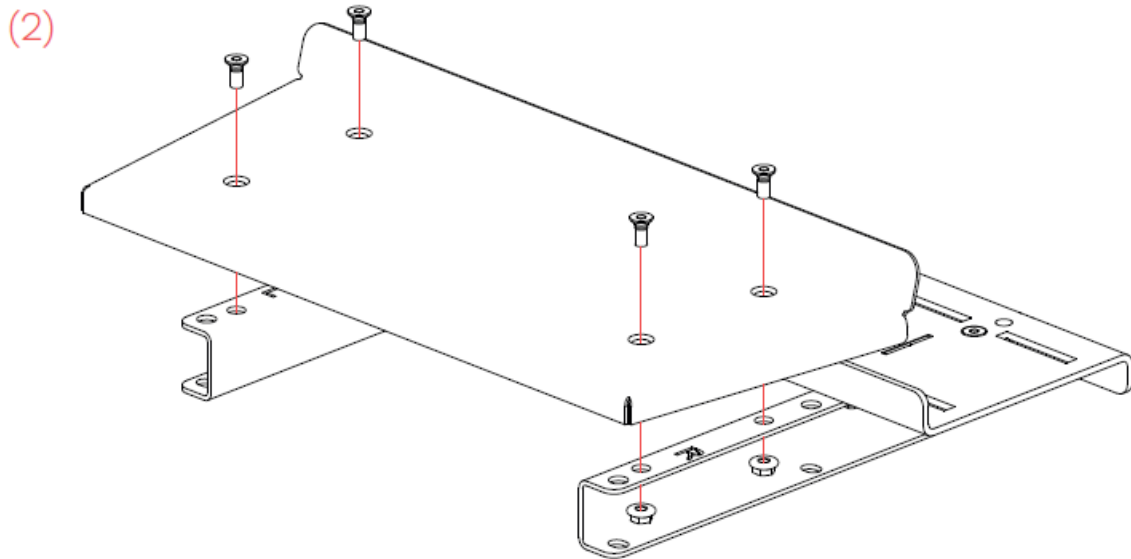
- Start with the assembly of the brackets on the black pedal mounting plate with M5x12 countersunk bolts and flanged nuts\*. NOTE: These nuts can be tightened without the use of a wrench, by holding them in place with a finger.
- Countersunk holes on the pedal plate should face upwards. The open side of the C-shaped brackets should face outwards (1).



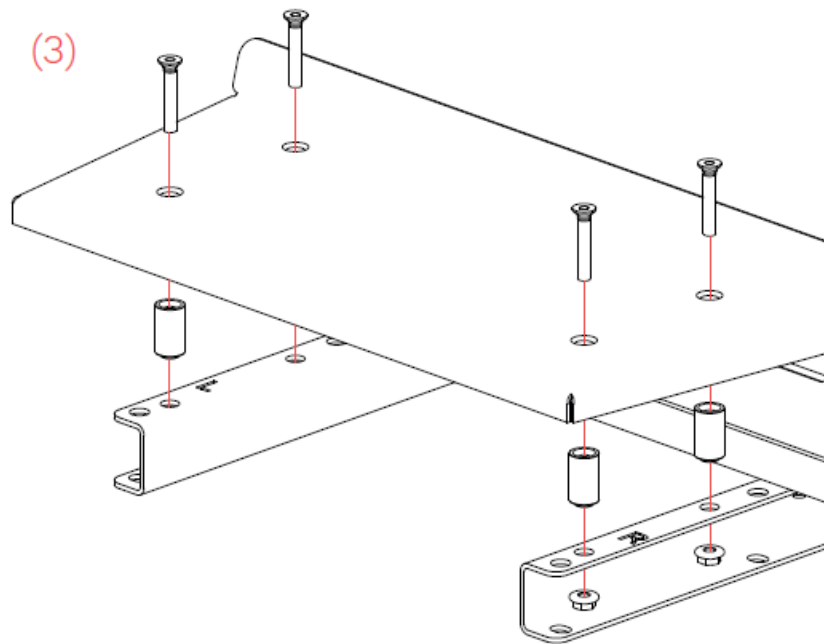
- \* All mentioned bolts and nuts are included.

## ADJUST YOUR HEEL PLATE

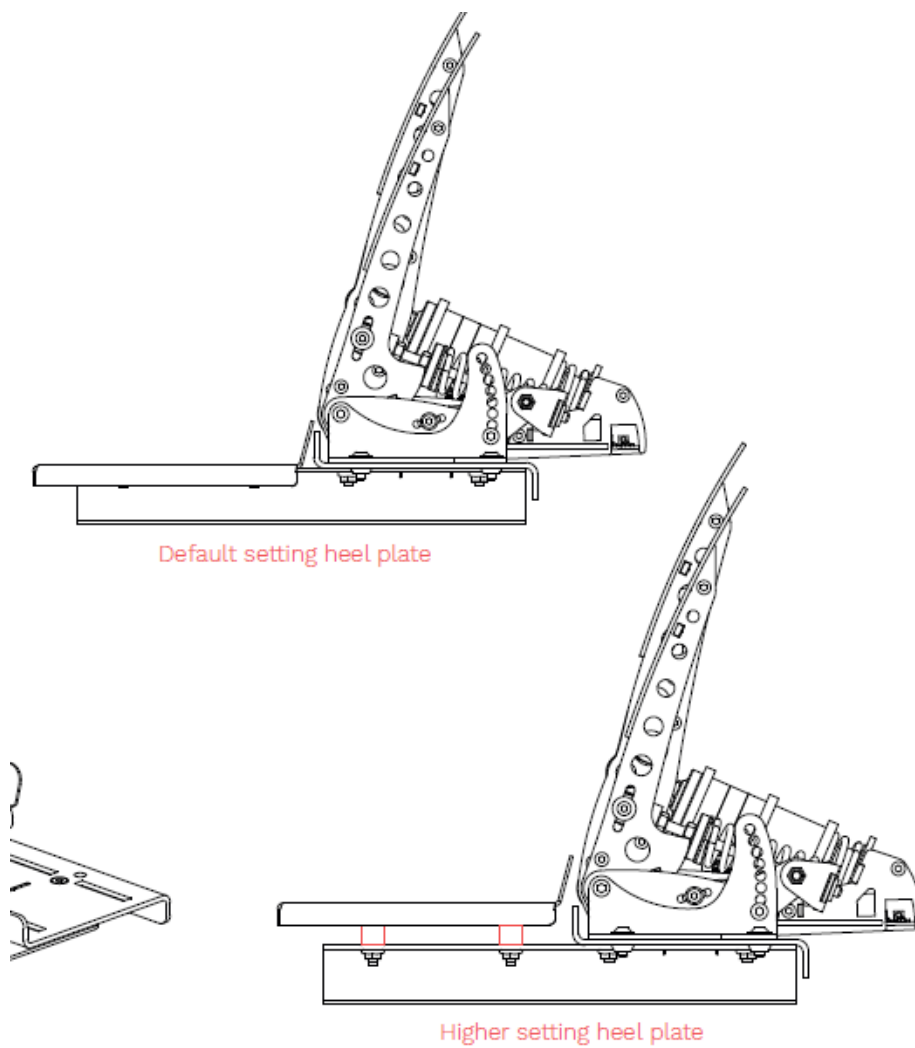
- Adjust the height of the heel plate to your own preference. To mount the heel plate in the lowest position use the M5x12 countersunk bolts and flanged nuts (2).



- Metal spacers are included with your Baseplate, which you can use to increase the height of the heel plate. For this, use the M5x30 countersunk bolts instead. NOTE: Do not use the spacers to raise the pedal plate (3).

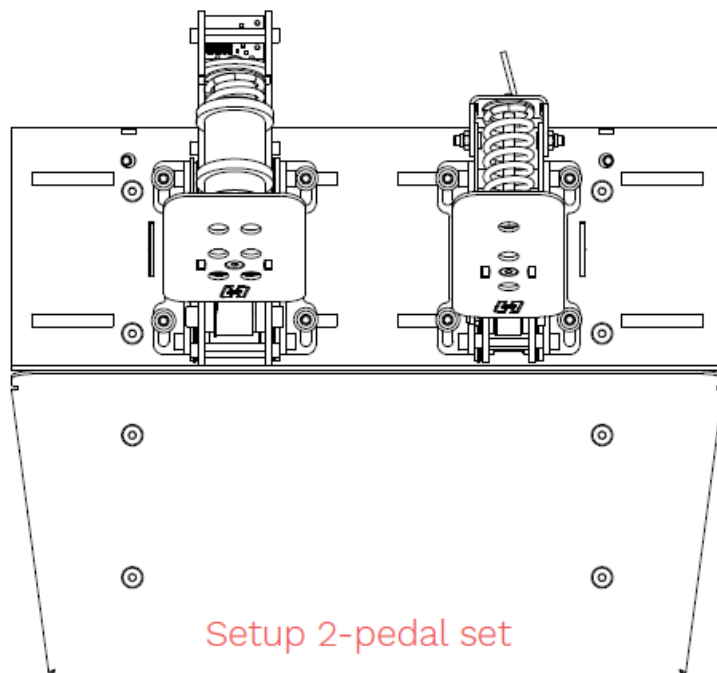


## HEEL PLATE SETTINGS

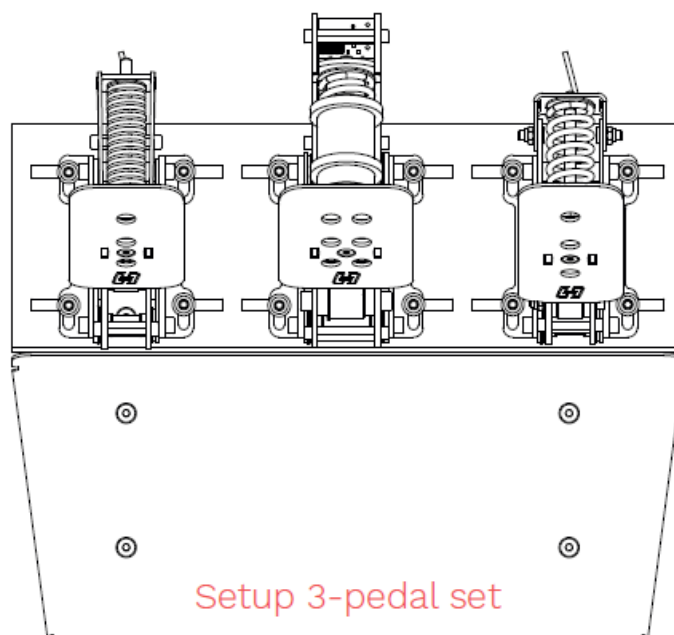


## MOUNT YOUR SPRINT PEDALS

- This Baseplate is compatible with the Heusinkveld Sprint pedals. If you slightly loosen the 4 mounting bolts, you can easily fine-tune the pedal position in all directions.



- To mount the assembly to your aluminium rig, use the hexagonal bolts M6x12 and M6 t-nuts.
- For installation on other types of pedal plates use the M6x25 bolts and M6 flanged nuts.



## FULL MANUAL & TUTORIALS

The full manual for this product can be found on our website. Do you prefer watching a video? Check out our tutorials too: [heusinkveld.com/support/product-manuals](https://heusinkveld.com/support/product-manuals)



### **PIT STOP FOR YOUR QUESTIONS**

If you have any questions about our products or need help with the installation, our Support Team is happy to help you at [support@heusinkveld.com](mailto:support@heusinkveld.com)

### **JOIN OUR COMMUNITY**



### **PLEASE RECYCLE RESPONSIBLY**

The packaging of this product is made out of paper and cardboard where possible. Please make sure to follow local guidelines for responsible recycling.





## [HEUSINKVELD Sprint Baseplate Anthracite](#) [pdf] User Guide Sprint Baseplate Anthracite, Baseplate Anthracite, Anthracite

### References

- [H Instruction Guidelines and Technical Support • Heusinkveld®](#)
- [User Manual](#)

[Manuals+](#), [Privacy Policy](#)

This website is an independent publication and is neither affiliated with nor endorsed by any of the trademark owners. The "Bluetooth®" word mark and logos are registered trademarks owned by Bluetooth SIG, Inc. The "Wi-Fi®" word mark and logos are registered trademarks owned by the Wi-Fi Alliance. Any use of these marks on this website does not imply any affiliation with or endorsement.