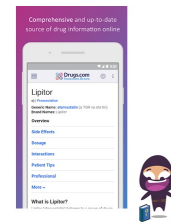


**Heruikun  
Heruikun Finder  
Card App**



# Heruikun Finder Card App User Manual

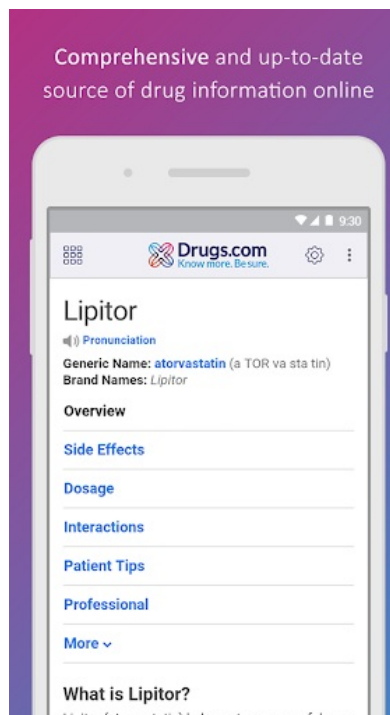
[Home](#) » [Heruikun](#) » **Heruikun Finder Card App User Manual** 

## Contents

- 1 Heruikun Finder Card App
- 2 Product Information
- 3 Product Usage Instructions
- 4 Remove Finder Card:
- 5 FCC Warning:
- 6 Documents / Resources
  - 6.1 References
- 7 Related Posts

# Heruikun

## Heruikun Finder Card App



## Product Information

### Specifications:

- Product Name: Finder Card
- Compatibility: iPhone and iPad with Find MyTM app support
- Features: Connect and locate items using the app, customizable name and emoji

## Product Usage Instructions

### Add Your Finder Card:

1. Start the APP: Open Find MyTM on your supported iPhone or iPad and allow notifications from the app.
2. Connect Finder Card:
  1. Press the button to power on the Finder Card.
  2. Select the 'Items' tab, then tap 'Add Item', and next tap 'Other supported items'.
  3. Choose a recognizable name and emoji for your Finder Card and tap 'Continue'.
  4. Once Finder Card is located, tap 'Connect'.
  5. Find MyTM app will ask for confirmation to add Finder Card to your Apple ID, tap 'Continue'.
  6. Tap 'Finish', and your Finder Card will be set up and ready to be connected to whatever item you wish to locate, e.g., your keys.

### Remove Finder Card:

1. Open Find MyTM app and select the 'Items' tab.
2. Tap on your Finder Card from the list.
3. Please ensure 'Lost Mode' is disabled.
4. Scroll to the bottom of the screen and tap 'Remove Item'.

5. A summary will open, then tap 'Remove' to confirm.
6. Note: 'Notify When Found' can only be activated when your Finder Card is out of range.

#### Extras:

- **Serial Number Look Up:** If an Apple device user finds a lost Finder Card, they can view the product serial number and owner information through the following methods:
  1. Locate the button on the front of the Finder Card.
  2. Press the button twice.

#### FCC Warning:

Compliance with FCC regulations is important for this product. Please refer to the user manual for more information.

#### FAQ

- **Q: How can I activate Lost Mode for my Finder Card?**  
A: To activate Lost Mode, open the Find My™ app, select your Finder Card from the list, and enable Lost Mode from the options provided.
- **Q: Can I customize the name and emoji for multiple Finder Cards?**  
A: Yes, you can customize the name and emoji for each Finder Card you connect through the app. Simply follow the steps outlined in the user manual for each card.

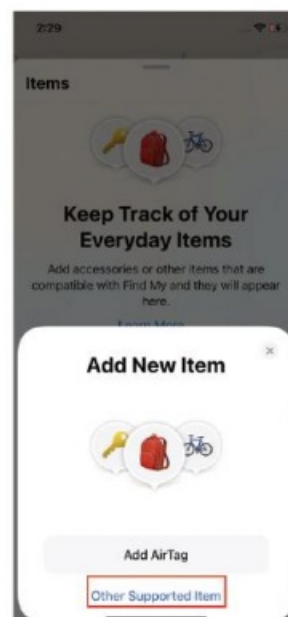
#### Finder Card User Manual

Add Your Finder Card:

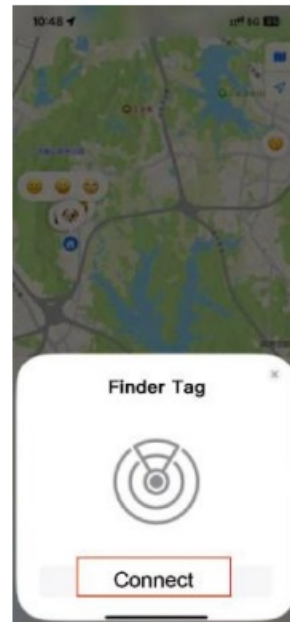
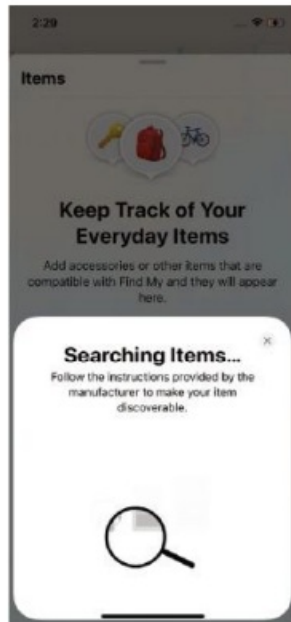
Start the APP: Open Find My™ on your supported iPhone or iPad and allow notifications from the APP.

Connect Finder Card:

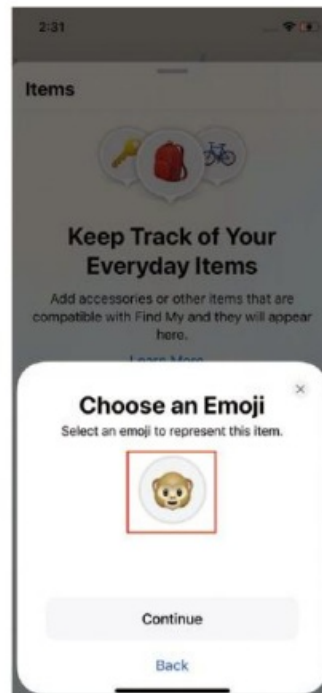
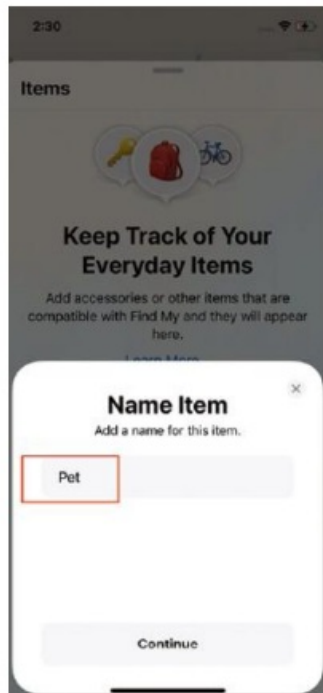
1. Press the button to power on Finder Card ,
2. Select " Items " tab , then tap " Add Item " , and next tap " Other supported items " ,
- 3.



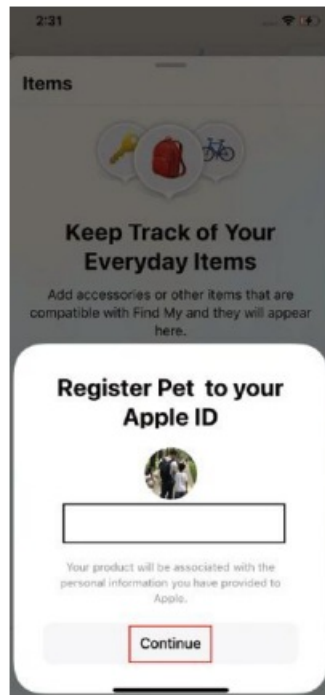
Once Finder Card is located , tap " Connect " .



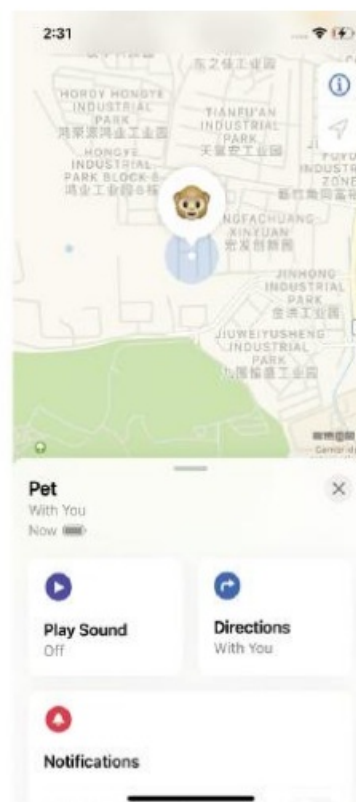
4. Choose a recognizable name and emoji for your Finder Card and tap "Continue",



5. Find My™ APP wil ask for confirmation to add Finder Card to your Apple ID , and tap "Continue",

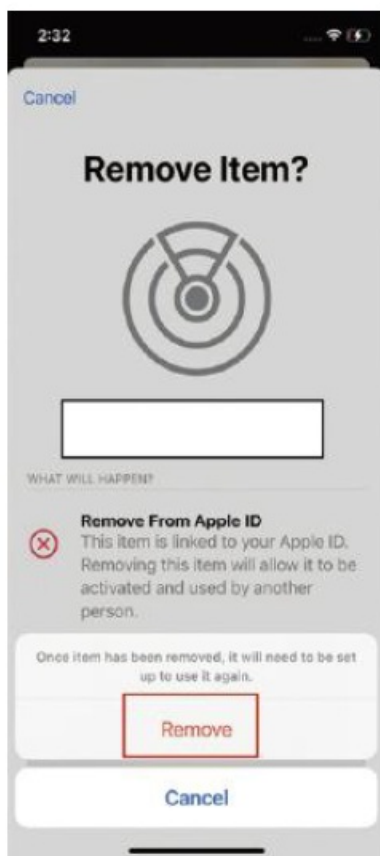
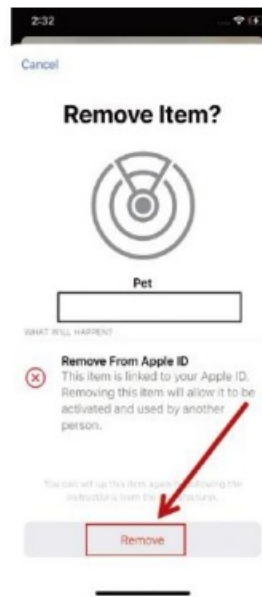
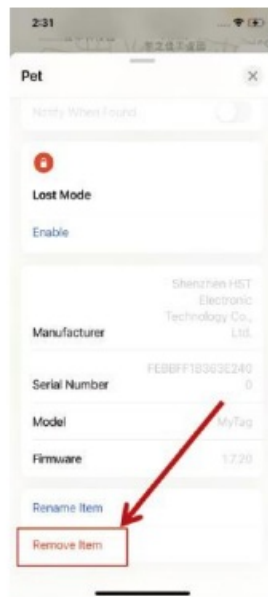


6. Tap “ Finish ” and your Finder Card will be set up and ready to be connected to whatever Finder Card you wish to locate , e.g. your keys .



## Remove Finder Card:

1. Open Find My™ APP and select “ Items ” tab,
2. Tap on your Finder Card from the list,
3. Please ensure “ Lost Mode ” is disabled,
4. Scroll to the bottom of the screen and tap“ Remove Item ”,
5. A summary will open , then tap “ Remove ” to confirm.



- **Power on** 1 Locate the button on the front of the Finder Card. 2 Press the button once. One confirmation beeps will sound. 3 If power off by button and not paired. Press the button again. One confirmation beeps will sound
- **Power off** 1 Locate the button on the front of the Finder Card. 2 Quickly press the button four times. On the fourth press, hold the button for three seconds. Two confirmation beeps will sound
- **Factory Reset** 1 Locate the button on the front of the Finder Card. 2 Quickly press the button five times. On the fifth press, hold the button for three seconds. Two confirmation beeps will sound.

**Locate Your Finder Card:**

Find Finder Card when It's Nearby:

1. Open Find My™ app and select the “ Items ” tab
2. Tap on your Finder Card from the list ,
3. Tap“ Play Sound ” to make your Finder Card Beep,
4. Tap“ Stop Sound ” to stop the beeps once you find it

#### **Find Finder Card's last Known Location:**

1. Open Find My™ app and select the “ Items ” tab
2. Tap on your Finder Card from the list ,
3. Your Finder Card's last known location will appear on the map
4. To navigate to that last known location , tap “ Direction ” to open the Apple Maps app.

#### **Find Finder Card Out of Range**

##### **Enabling “ Notify When Left Behind ”:**

1. Open Find My™ app and select the “ Items ” tab ,
2. Tap on your Finder Card from the list ,
3. Under“ Notifications ” enable the “ Notify When Left Behind ” toggle ,
4. You will receive a notification when you leave your Finder Card behind and it's no longer in range of your device .

##### **Enabling “ Notify When Found ”:**

1. Under “ Notifications ” enable the “ Notify When Found ” toggle ,
2. When your Finder Card is seen by another Find My™ enabled device , you will receive a notification of its updated location .
3. Note: “ Notify When Found ” can only be activated when your Finder Card is out of range .

#### **When Your Finder Card is Lost**

##### **—Enabling “ Lost Mode ”**

1. Open Find My™ app and select the “ Items ” tab,
2. Tap on your Finder Card from the list ,
3. Under “ Lost Mode ” tap “ Enable ”,
4. A screen detailing Lost Mode will pop up , tap “ Continue ”,
5. Enter your phone number or email address and tap “ Next ”,
6. You may enter a message that will be shared with the person that finds your item,
7. Tap “ Activate ” to enable “ Lost Mode ”,
8. Note: When “ Lost Mode ” is enabled ,“ Notify When Found “ is automatically enabled.
9. Note: When “ Lost Mode ” is enabled , your Finder Card is locked and cannot be paired to a new iPhone or iPad.

#### **Extras**

### —Serial Number Look Up

If an Apple device user finds a lost Finder Card, they can view the product serial number and owner information through the following methods. Locate the button on the front of the Finder Card. Press the button twice. Unwanted Tracking: If any Find My network accessory separated from its owner is seen moving with you overtime, you'll be notified in one of two ways:

1. If you have an iPhone, iPad or iPod touch, Find My will send a notification to your Apple device. This feature is available on iOS or iPad OS 14.5 or later.
2. If you don't have an iOS device or a smartphone, Find My network accessory that isn't with its owner for a period of time will emit a sound when it's moved.

These features were created specifically to discourage people from trying to track you without your knowledge.

### Others

The Apple Find My network provides an easy, secure way to locate compatible personal items using the Find My app on your iPhone, iPad, Mac, or the Find Items app on Apple Watch.

To use the Apple Find My app to locate this item, the latest version of iOS, iPadOS, or macOS is recommended. The Find Items app on Apple Watch requires the latest version of watchOS.

Use of the Works with Apple badge means that a product has been designed to work specifically with the technology identified in the badge and has been certified by the product manufacturer to meet Apple Find My network product specifications and requirements. Apple is not responsible for the operation of this device or use of this product or its compliance with safety and regulatory standards.

Apple, Apple Find My, Apple Watch, Find My, iPhone, iPad, iPadOS, Mac, macOS and watchOS are trademarks of Apple Inc. IOS is a trademark or registered trademark of Cisco in the U.S. and other countries and is used under license.



### FCC Warning:

This device complies with part 15 of the FCC Rules. Operation is subject to the following two conditions:

1. This device may not cause harmful interference, and
  2. This device must accept any interference received, including interference that may cause undesired operation.
- Any changes or modifications not expressly approved by the party responsible for compliance could void the user's authority to operate the equipment.

**NOTE:** This equipment has been tested and found to comply with the limits for a Class B digital device, pursuant to Part 15 of the FCC Rules. These limits are designed to provide reasonable protection against harmful interference in a residential installation. This equipment generates, uses and can radiate radio frequency energy and, if not installed and used in accordance with the instructions, may cause harmful interference to radio communications. However, there is no guarantee that interference will not occur in a particular installation. If this equipment does cause harmful interference to radio or television reception, which can be determined by turning the equipment off and on, the user is encouraged to try to correct the interference by one or more of the following measures:


- Reorient or relocate the receiving antenna.



- Increase the separation between the equipment and receiver.
- Connect the equipment into an outlet on a circuit different from that to which the receiver is connected.
- Consult the dealer or an experienced radio/TV technician for help.

The device has been evaluated to meet general RF exposure requirement. The device can be used in portable exposure condition without restriction.

## Documents / Resources

	<a href="#">Heruikun Finder Card App</a> [pdf] User Manual H02, 2BGDY-H02, 2BGDYH02, Finder Card App, Card App, App
---	--

## References

- [User Manual](#)

[Manuals+](#), [Privacy Policy](#)

This website is an independent publication and is neither affiliated with nor endorsed by any of the trademark owners. The "Bluetooth®" word mark and logos are registered trademarks owned by Bluetooth SIG, Inc. The "Wi-Fi®" word mark and logos are registered trademarks owned by the Wi-Fi Alliance. Any use of these marks on this website does not imply any affiliation with or endorsement.