



HERSCHEL XLS700TW-INT Select XLS Towel Heater Instruction Manual

[Home](#) » [HERSCHEL](#) » HERSCHEL XLS700TW-INT Select XLS Towel Heater Instruction Manual 

Contents

- 1 HERSCHEL XLS700TW-INT Select XLS Towel Heater
- 2 INSTALLATION & OPERATING INSTRUCTIONS
- 3 IMPORTANT SAFETY PRECAUTIONS
- 4 SAVE THESE INSTRUCTIONS
 - 4.1 Positioning
 - 4.2 Fixed wiring into mains. Professional installation required
 - 4.3 Operation – using built-in Smart Control
 - 4.4 Operation – using the Smart Life app
- 5 Cleaning and maintenance
 - 5.1 Getting the most from your Herschel heater – top tips
 - 5.2 Herschel Easy-fix mounting system
- 6 5 Year Warranty
 - 6.1 Compliance with Eco-design directive 2009/125/EC
- 7 Documents / Resources
 - 7.1 References
- 8 Related Posts

HERSCHEL®

HERSCHEL XLS700TW-INT Select XLS Towel Heater



INSTALLATION & OPERATING INSTRUCTIONS

MODELS COVERED BY THIS MANUAL:

Select XLS towel heater

- XLS500TW-INT
- XLS700TW-INT

The product complies with European Safety Standards Low Voltage Directive 2014/35/EC, EMC Directive 2014/30/EC, RoHS 2011/65/EC & Eco-design requirements for local space heaters 2009/125/EC. The radio equipment used in the wireless thermostat complies with Directive 2014/53/EU. The full text of the EU declaration of conformity for radio emissions is available at the following internet

Address: <https://www.herschel-infrared-technologycenter.com/compliance/>

Original instructions covering Select XLS Towel Heaters produced from 11/2021 onwards

IMPORTANT SAFETY PRECAUTIONS

Failure to observe these instructions will invalidate the warranty. Do not disassemble. No user-serviceable parts inside.

WARNING

TO REDUCE THE RISK OF FIRE, ELECTRIC SHOCK OR INJURY

- This appliance must be disconnected from its power source during installation or service activities and when replacing.
- The Select XLS towel heater is equipped with a sensor providing temperature control of the unit and the surrounding area. Nevertheless the panel surface can rise to 90°C / 194°F (depending upon input voltage) and must not be operated in locations where people can fall or become immobile next to the heater.
- The Select XLS towel heater has internal safety thermal cut out sensors. However, in order to avoid

overheating

and potential fire hazard, DO NOT cover the entirety of the heater. The lower section of the heater only may have towels placed against it using the rail

- provided. DO not cover the upper (hotter) heating surface of the heater under any circumstances.
- DO NOT touch the heater when in use. The upper portion of the heater has a surface temperature of around 90°C / 248°F (depending upon input voltage) and prolonged contact with this section of the heater will cause burns and injury.
- DO NOT operate the heater if the cord or plug is damaged or after the heater malfunctions, or if it has been dropped or damaged in any manner. Check each heater for damage before installation. Make sure that the heater itself, the plug (if applicable) and the cable are free of any visible signs of damage. If the cord is damaged the appliance must be sent for repair to an authorized Herschel Dealer.
- This heater must only be used for the heating of people or buildings. The heater is not to be used by children or persons with reduced physical, sensory or mental capabilities, or lack of experience or knowledge. Children should be kept away and should not be left unsupervised around the unit. DO NOT use outdoors.
- All operators should only switch on/off the appliance provided that it has been placed or installed in its intended operating position in accordance with these instructions. Children must not plug in, switch on or regulate the appliance or perform user maintenance including cleaning.
- Herschel panels are designed for use with an AC voltage between 220-240 volts, 50 Hz AC. If your supply voltage exceeds 240 Volts do not use the heater and refer to your local dealer. Failure to adhere to this will void the warranty.
- The heater must be mounted on a non-flammable surface.

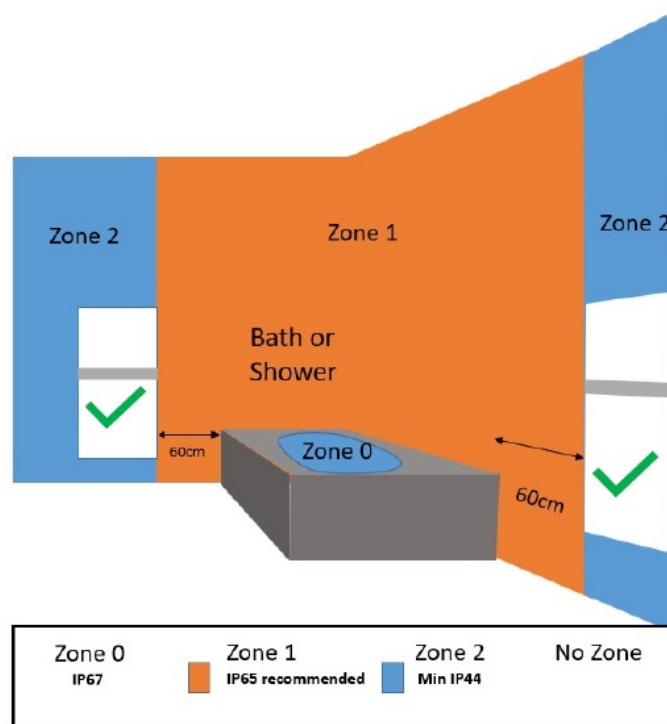
SAVE THESE INSTRUCTIONS

Thankyou for purchasing a Herschel Select XLS infrared towel heater. Incorporating the very latest in control with its inbuilt touchscreen and app control and its EASYFIX mounting and slimline frameless design, you will enjoy many years of low energy, smart and comfortable heating. We've tried to make installing and using your heater as easy as possible. Please read these instructions fully and retain for future reference. If you have any questions our website also has many FAQs or you can call, message or online chat with us, we are always happy to help ensure that you get the most from your new Herschel heating system.

Positioning

WARNING

Herschel Select XLS towel heaters are rated to a standard (minimum IP44) enabling them to be located within zone 2 in a bathroom. This means they can be placed 60cm outside any splash zones. They cannot be installed in zones 0 or 1 (see diagram). However, installation in potentially wet or humid rooms such as bathrooms must be carried out by a suitably qualified installer and comply with local electrical safety requirements. Installation must be such that the heater must not be able to become detached from the fittings and fall into a bathtub, shower, swimming pool or other water container and that switches and other controls cannot be touched by a person in the bath or shower. If in doubt, do not install. Herschel Infrared Ltd shall not be liable for any loss, damage or injury caused or resulting from inadequate fitting or incorrect placement of heaters close to water sources.



- The heater must be wall-mounted only in a portrait position.
- Leave 200mm to each side and the bottom of the heater, clear of other objects (floor, furniture etc.)
- The top portion of the towel heater is hotter than the lower portion. This part of the heater is designed to heat the room, so you should avoid placing the heater where obstacles could obscure this part of the heater.
- The lower portion of the heater is a cooler portion designed just to dry and warm your towels.

Fixed wiring into mains. Professional installation required

The panel may be mounted using the EASYFIX mounting bracket and “hard wired” to the electrical supply. This will require connection to a suitable connection box such as a fused spur positioned adjacent to the heater. This method of installation must only be carried out by a competent electrician. The built-in touchscreen control should be located at the bottom-right of the panel. The panel can only be mounted in a portrait position.

DISCLAIMER

Under all normal operating conditions it is not possible for the towel heater to reach temperatures high enough to scorch fabrics commonly used in towels. This heater has an inbuilt-safety shut-off that will switch off the power well before such temperatures can be reached. However it is common for many types of toiletries and washing products and other uses to leave deposits in towels that can soak in and cause brown markings and odors on towels due to the action of the heat on the deposits. Herschel disclaims any liability for these types of marks or odors.

WARNING

- Wiring to this appliance must be connected in accordance with the relevant national electrical safety standards. It is a Class 1 appliance and must be earthed.
- When placed in public areas, installation must comply with relevant local electrical standards. For certain public buildings like schools and care homes the heaters must be installed according to the specific legislation for these types of buildings.
- The electrical supply to each heater should be provided by connecting to a circuit protected by a fuse or residual current device (RCD) or Ground Fault circuit interrupter (GFCI) suitable for the electrical rating of the

appliance.

- Color coding used in the supplied mains cable: BROWN wire is to be connected to LIVE ('L'), the BLUE wire to NEUTRAL ('N') and the GREEN/YELLOW wire to EARTH

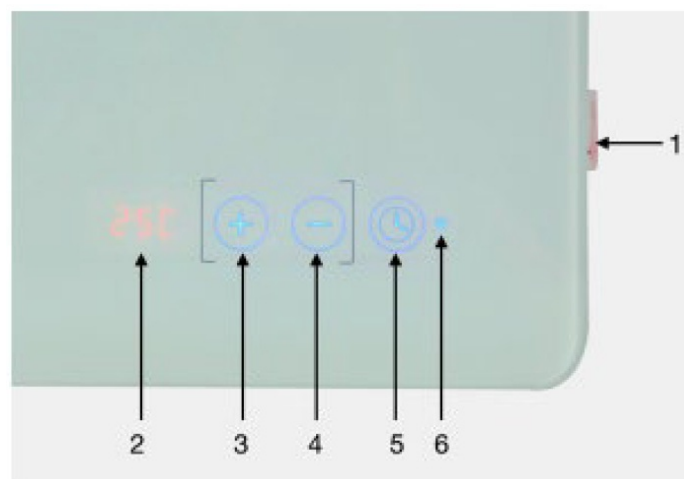
CAUTION

- Ensure mains power is OFF before commencing an installation involving fixed wiring. Any fixed wiring outside the heater coming into contact or close proximity to the heater must be protected by sleeving with a temperature rating of at least 90°C.
- All cabling behind the appliance must take the shortest route to the edge of the heater.
- Ensure that the power cable is not coiled. Shorten the power cable if possible and do not place excess cable on the rear of the heater.
- Electrical connections must not be made behind the heater regardless of wall or ceiling-mounting position.
- The heater is not to be located immediately below a socket outlet in either wall or ceiling-mounted positions.
- DO NOT drill through the heater as this will cause irreparable damage and is also dangerous.
- DO NOT connect a heater that is damaged in any manner to the power network.
- For mounting the Herschel panel use the supplied mounting hardware only and install in accordance with the installation guide.

Operation – using built-in Smart Control

The Select XLS Towel Heater has an integrated WiFi touchscreen control box, meaning there is no other additional thermostat needed to control the heater. The heater can either be controlled manually using the manual control touchscreen on the right bottom of the glass surface or can be operated using the Smart Life app on a smartphone.

Touchscreen description



1. Power switch
2. Screen
3. "+" button
4. button
5. Timer
6. Wi-Fi indicator

Manual control

- Activate the Power switch, the screen will show the current room temperature reading.
- Adjust your desired room temperature by pressing the “-” or “+” button.
- To set up the countdown timer function, you can press the Timer button, and the screen will show “1H”- meaning the heater will operate on the countdown timer and will power off after 1 hour. Press the Timer button again to change the countdown time “2H”, “3H” and so on (up to 24 hours).
- Long press the “+” button for 3 seconds to turn on/off the heater via touchscreen.

Bypass mode

The in-built controller can be entirely bypassed using “Bypass mode”. (This is useful for example when the heater is to be run as part of a 3rd party building control solution).

Press “-” and “+” together to activate the bypass mode. The screen will show “BP”. Under bypass mode the heater will be connected directly to the electricity. Press “-” and “+” together again to deactivate the bypass function.

Operation – using the Smart Life app

The Select XLS Towel Heater is able to be paired directly with the Smart Life app via your home WiFi and can then be operated via your phone, as well as manually via the touchscreen. Using Smart Life you can remotely set the temperature, switch the heater on and off or run the heater according to a schedule. Be sure to follow the pairing instructions closely. Online help is also available via the Help & Support section of your local Herschel Website.

Pairing the Towel Heater with Smart Life

In all pairing steps please ensure your mobile phone and the towel heater are connected to the 2.4GHz wireless connection. Pairing will not be successful using a 5GHz connection.

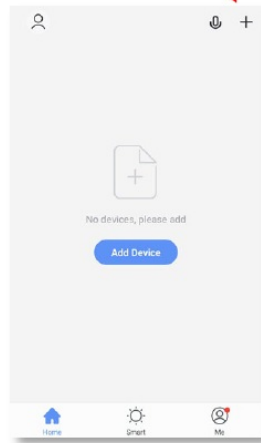
Download & Install the Smart life App

- Scan the QR code below to download the Smart life App from the App Store or Google Play.
- Alternatively, search “Smart Life” on Google Play or the App Store & look for this icon.

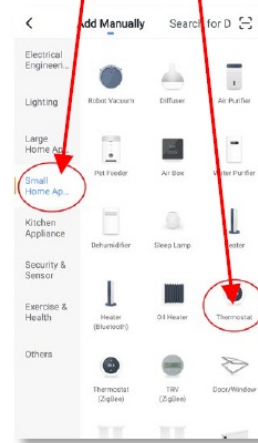


- After installing and opening the Smart life App, you must register an account using an email address and password and accept the terms of use.

Tap '+' top right of App



Select "Small Home Appliances" and then "Thermostats"



If this is your first thermostat you are adding you will be asked to enter your Wifi password.

You will not have to do this when you add subsequent thermostats to the App.

- Turn your Towel heater ON (or turn it OFF and then turn it back ON to start Wi-Fi Discovery).
- The Wi-Fi indicator on the Towel heater should be rapidly blinking.
- Confirm in the Smart life App that the Wi-Fi indicator is rapidly blinking and the pairing process will start. Please let the process run to 100% completion on the app.
- The pairing process is very reliable on a 2.4GHz connection. Should the process fail please ensure you are on a 2.4GHz connection and retry the pairing process.

Control of Wi-Fi

- Wi-Fi connection will always be attempted when the heater is switched on. If the heater has never been paired with the Wi-Fi, then the Wi-Fi Indicator will flash for a short period and then go out. If the heater has been paired with the Wi-Fi, then the Wi-Fi indicator will flash for a short period and then remain on.
- Wi-Fi can temporarily be turned off by pressing the "-" button for 10 seconds. It can be turned back on by pressing "-" again for 10 seconds. To disconnect the heater from Wi-Fi entirely, press the "Timer" button on the touchscreen for 8 seconds until the Wi-Fi indicator starts to flash again. The heater will then operate without Wi-Fi.

Cleaning and maintenance

• General

- Please note it is possible the heater may discolor with use – this is caused by airborne pollution and is not a fault.
- The heater is designed to last many years and incorporates several safety features, but if the heater has not been used or installed in adherence to these instructions, emits any noise, smell, or shows rapid discoloration of the surface, discontinue using the heater and refer to Herschel Customer Service or your local Herschel dealer.
- The Herschel panel must be installed, uninstalled, cleaned or transported only when cold.

• Painting

- Do not paint the Select XLS Towel heater.

• Cleaning

- Before attempting to clean the panel, unplug the heater, isolate the unit from the electrical supply and allow it to completely cool down.
- DO NOT immerse the Herschel panel heater in water or splash water onto it.

- Clean the heater with a damp cloth. For glass models glass cleaner can be used. Never use a wet cloth. When clean, dry the surfaces with a dry cloth.
- DO NOT apply abrasive materials, solvents or solvent wipes to the surface as this can cause irreparable damage. Wait until the unit is completely dry before use.
- **Repair**
 - DO NOT attempt to repair or adjust any electrical or mechanical functions on this unit, doing so will void your warranty. Repairs must only be carried out by Herschel or an authorized Herschel service partner.
- **Disposal**
 - The heater is an electrical product and must not be disposed of in household waste. A high percentage of the heater can be recycled. Please treat as electrical waste and recycle in accordance with local regulations.

Getting the most from your Herschel heater – top tips

- **Save energy**
 - Most people are comfortable in living areas at around 19c with infrared but it varies person to person. Take time to experiment and get used to your system and the temperatures you are happy with. The lower you set your thermostat, the less electricity you will use.
 - Only heat the rooms that you use. Spare rooms can be heated to much lower temperatures and boosted when people will be occupying them.
 - Living areas such as living room and kitchen should be heated differently to bedrooms and bathrooms. Living areas are suited to a more constant heating schedule. Bedrooms are usually better to be heated quickly and let to cool down again during the day. Set your controllers to fit with your lifestyle and make the most of the 7 day program function
 - you might have different heating requirements and times on weekdays to weekends.
- **Don't over heat your room and take time to let the system work**
 - Infrared is different to conventional heating. Because all of the energy from the heater is absorbed by the room and the objects in it (we call it the "thermal mass"), it takes time for the thermal mass to warm up. It's only once the room itself is warm that you will feel warm. The great thing is that this heat is retained longer and only needs topping up to account for the heat loss escaping from the room. In the longer term you will use less energy than convection heating. At the start of the heating season or when your room has cooled a lot the heater may be running for longer periods and could take several days to warm up. Don't make the mistake of increasing the temperature on the controller more than you want it to be – it won't heat the room any quicker but will waste energy by overheating the room.
- **Don't underspecify your heater requirements**
 - Herschel is lower energy heating but it's not magic and if you try to heat a room with an undersized heater you'll just end up cold and wasting energy and money. Ensure you have the correct sized heater(s) for the room and if in any doubt consult the website, your local dealer or contact us.
- **Go Carbon Zero**
 - If you've not already done so, switch your energy supplier to a 100% renewable tariff. It's probably the easiest and quickest thing you can do to reduce your Co2 emissions.
- **And lastly.. tell your friends**
 - You'll soon be wondering what life was like in the bad old days before you got your Herschel heaters. Don't keep it to yourself! Share your photos and spread the word on social media to help others to move

off their fossil fuel based and inefficient heating systems!

Herschel Easy-fix mounting system

Preparation – Important Notice

When the Easy Fix bracket is fitted to the panel, it will be offset from center due to the locking movement. To ensure your panel fits exactly where you want it on the wall, it is important before installing that you place the bracket on the panel in its locked position and measure the distance of the mounting holes to the edges of the panel before then marking, checking and drilling them on the wall to cater for this offset.

1. Step 1

Use a spirit level to ensure the bracket is level and mark the position for drilling in each of the small holes in the four corners of the mounting bracket.

2. Step 2

Drill holes using a 8mm drill.

3. Step 3

Insert the supplied raw plugs. If mounting on to a cavity wall you will need appropriate fixings (not supplied).

4. Step 4

Screw the mounting bracket to the wall using the supplied screws.

5. Step 5

Screw the towel rail to the back of the panel using the fixing screws provided.

6. Step 6

Fit the panel to the wall by locating all four mounting fixings on the rear of the panel into the wide openings on the mounting bracket and slide the panel down, left and down again to its final fixed position.

Unscrew the four distance pieces (in each corner) on the rear of the heater panel so that the panel is held tightly in its mounting on the wall and cannot be moved.

Ensure the power lead is free from any obstruction behind the panel.

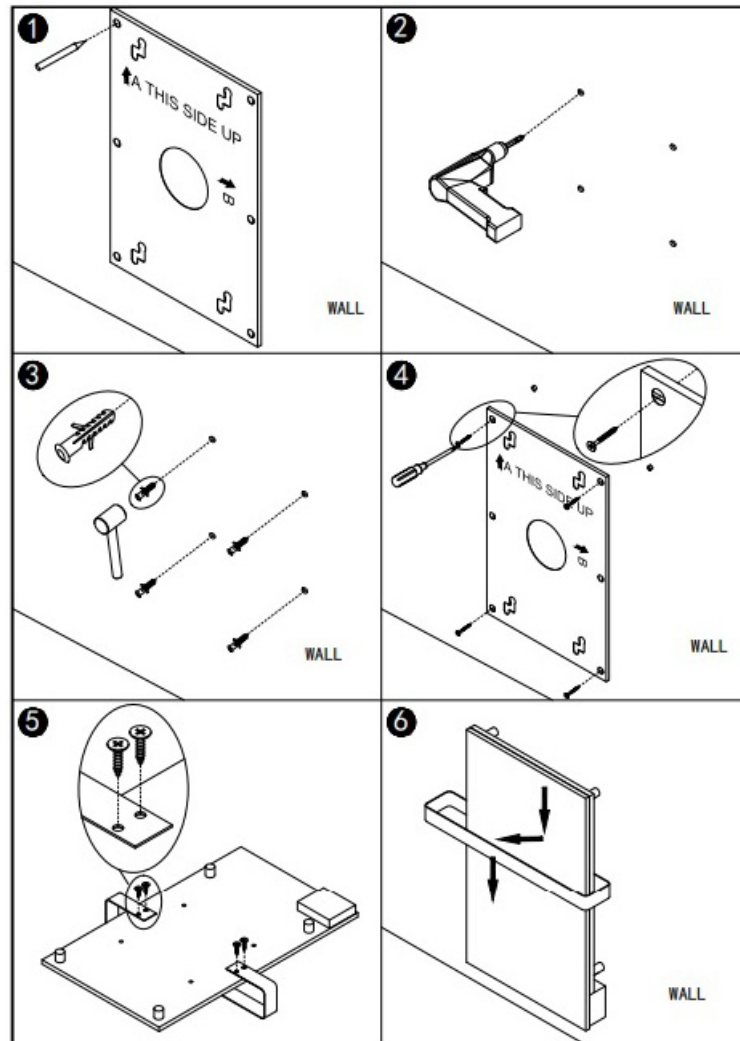
Removal

Herschel Easy-fix is designed to be secure to avoid accidental dismounting or tampering with the panel. To dismount the panel, screw the four distance pieces back in and move the panel up, right, then up and out.

5 Year Warranty

- Register your product here <https://www.herschel-infrared.co.uk/customer-service/warranty-registration/>.
- Within five years from date of purchase Herschel will repair or replace the heater where the fault is due to defects in materials or workmanship. This warranty is for standard domestic use only and excludes commercial uses. In the event of a warranty claim please visit the Customer Service area of the Herschel Website and follow the Warranty Claim process. You will need proof of purchase and photographs of the heater.
- A prerequisite for validity of the warranty is use at the specified supply voltage of the heater and use in accordance with the conditions specified in this manual. Any further warranty or claims are excluded.
- The warranty covers the repair or replacement of the defective product only and Herschel shall have no liability for installation costs or consequential losses however incurred. The decision to repair or replace will rest solely with Herschel and any replacement will be as close as possible in specification to the failed heater.
- Removing the serial number will void the warranty. The warranty will also be void if the heater has been tampered with or opened in any way.

- The product power label must be left on the panels where they can be accessed after installation if necessary.
- Herschel Infrared Ltd will assume no responsibility for scratches on surface or frames after first use.



Disclaimer

Herschel Infrared Ltd cannot accept responsibility for damage, loss or injury caused by ingress of water or moisture, accidental damage, mishandling, external impact, adjustment by unauthorized personnel or failure to follow the correct maintenance and safety precautions as stated in the manual. Refer to Herschel Infrared Ltd's warranty policy for full details. See <https://www.herschel-infrared.co.uk>.

Compliance with Eco-design directive 2009/125/EC

- When used without the Smart Life app, the Select XLS Towel Heater is only suitable for well insulated spaces or occasional use.
- When using the Smart life app, the Select XLS towel heater meets Eco Design (Lot 20) requirements.
- Herschel is not responsible for any breach of the legislation where the Select XLS Towel heater is used without the control methods recommended in these instructions.

ECODESIGN Information for Select XLS towel heater


When installed as fixed Electric Space Heaters

Applies to ALL models covered by these instructions.

- Seasonal space heating energy efficiency pre Lot 20 Target efficiency target post Lot 20 = 30%

- Actual efficiency post Lot 20 = 38%
- Technical Details = 38%
- Nominal heat output (Pnom) = Rated Wattage of heater (see product label)
- Maximum continuous heat output (Pmax,c) = Rated Wattage of heater (see product label)
- Type of control and efficiency gain = 7%
- Electronic room temperature control plus week timer Distance Control (app) = 1%

Documents / Resources

	<p>HERSCHEL XLS700TW-INT Select XLS Towel Heater [pdf] Instruction Manual XLS500TW-INT, XLS700TW-INT, Select XLS Towel Heater, XLS700TW-INT Select XLS Towel Heater, XLS Towel Heater, Towel Heater, Heater</p>
---	---

References

- [🌐 Contact infrared.co.uk domain name owner](#)
- [☀️ Herschel Infrared Heaters: UK No. 1 infrared heating panel manufacturer](#)
- [☀️ Herschel Infrared Product Warranty Registration](#)
- [☀️ Herschel Infrarood verwarming: energiezuinige radiatoren: betaalbare warmte](#)
- [☀️ Herschel infrarood productgarantieregistratie](#)
- [☀️ Registrazione della garanzia del prodotto a infrarossi Herschel](#)
- [☀️ Herschel Infrarotheizungen: Energiesparende Heizkörper](#)
- [☀️ Radiateurs infrarouges Herschel: n ° 1 français du chauffage infrarouge](#)
- [☀️ Enregistrement de la garantie du produit infrarouge Herschel](#)
- [☀️ Registro de garantía del producto infrarrojo de Herschel](#)