

hermanos SC01B Slow Cooker



hermanos SC01B Slow Cooker User Manual

[Home](#) » [Hermanos](#) » [hermanos SC01B Slow Cooker User Manual](#) 

Contents

- 1 [hermanos SC01B Slow Cooker](#)
- 2 [Product Information](#)
- 3 [Product Usage Instructions](#)
- 4 [FAQs](#)
- 5 [SYMBOLS](#)
- 6 [INTENDED USE](#)
- 7 [GENERAL SAFETY](#)
- 8 [RISK OF PERSONAL INJURY](#)
- 9 [CLEANING & MAINTENANCE](#)
- 10 [TECHNICAL SPECIFICATION](#)
- 11 [COMPONENT LIST](#)
- 12 [BEFORE FIRST USE](#)
- 13 [OPERATION](#)
- 14 [MAINTENANCE](#)
- 15 [WARRANTY](#)
- 16 [Documents / Resources](#)
 - 16.1 [References](#)

hermanos

hermanos SC01B Slow Cooker



Product Information

- **Specifications**
 - **Rated Voltage:** 220-240V
 - **Rated Power:** 170W
 - **Rated Frequency:** 50/60Hz
- **Components**
 - Handle
 - Glass Lid
 - Ceramic Bowl
 - Bowl Handles
 - Base Unit
 - Unit Handles
 - Temperature Control Dial
 - Power Indicator

Product Usage Instructions

- **Before First Use**
 - Wipe with a damp cloth.
 - **Caution:** Do not immerse in water.
- **Operation**

- Low – 6-8 Hours
- High – 3-5 Hours
- 1-8 Hours

• **Cleaning & Maintenance**

- Never soak or immerse electrical or heating components and or components that have a plug attached.
- Hand washing is recommended; soak in warm soapy water and wipe down using a soft sponge.
- To remove stubborn stains, use a non-abrasive cleaning brush.
- Do not use abrasive, harsh cleaning solutions or metal scouring pads.
- Never wash any electrical or heating components or a component that has a plug attached to a dishwasher.

• **Tips**

- Always place the appliance on a flat and stable surface with sufficient space on all sides.
- Ensure the area where the appliance is located is well-ventilated.
- The appliance should be at least half full for best results.

FAQs

• **Q: Can I put the ceramic bowl in the dishwasher?**

- **A:** No, never wash any electrical or heating components, or a component with a plug attached, in the dishwasher.

SYMBOLS



- Please read all instructions carefully before use and retain them for future reference.



- **ATTENTION:** This appliance has a thermal cut-out switch. The thermal cut-out will activate and shut down the appliance should the appliance overheat. Unplug from the mains and or battery and allow to cool for 30 minutes before re-use.



- **CAUTION:** Do not immerse in water.



- **CAUTION:** Hot surfaces

Please read all instructions carefully before use and retain them for future reference.

INTENDED USE

- Only operate the appliance for its intended purpose and within the parameters specified in this manual.
- This appliance is for domestic use only. Do not use it outdoors or on wet surfaces.

- This appliance is not intended for use by persons with reduced physical, sensory or mental capabilities, or lack of experience and knowledge unless supervised or given appropriate instruction concerning the product's use by a person responsible for their safety.
- The appliance is not intended to be operated through an external timer or a separate remote-control system.

GENERAL SAFETY

- Do not allow it to be used as a toy.
- Children should be supervised to ensure they do not play with the appliance.
- If the appliance is not functioning properly, has been dropped, damaged, left outdoors, or immersed in liquid, do not use it, contact Hermanos® Customer Services.
- Do not use the appliance if any parts appear to be faulty, missing or damaged.
- Ensure all parts are securely attached as instructed by this instruction manual before use.

CABLES AND PLUGS

- Check to ensure your electricity supply matches that shown on the rating plate. This product should only be used as rated. Preferably, the socket-outlet should be protected by a Residual Current
- Device RCD (UK/EU) Ground Fault Indicator (US).
- Do not use a damaged cable or plug. If the supply cable is damaged, it must be replaced by a qualified engineer or authorised service agent to avoid a hazard.
- The use of an extension cable is not recommended.
- Do not handle the plug or appliance with wet hands.
- Keep the cable away from heated surfaces.
- Do not let the cable hang over the edge of the table or countertop where it could be pulled on inadvertently by children or pets.
- Do not pull the cable around sharp edges or corners
- Do not leave unattended when plugged in. Unplug from the outlet when not in use.
- Turn off all controls before unplugging.
- Do not unplug by pulling on the cable. To unplug, grasp the plug, not the cable.
- Always unplug before performing user maintenance, connecting or disconnecting attachments, or changing accessories.
- Ensure the cable is stored safely to prevent hazards.

RISK OF PERSONAL INJURY

- Always locate your appliance away from the edge of the worktop, on a firm, flat heat-resistant surface with sufficient space around all sides. Do not insert any objects into openings or cover the appliance.
- Do not place any cardboard, plastics or paper inside or on the appliance unless stated in the instructions.
- Do not use the appliance near any combustible surfaces. Only use suitable cookware where applicable.
- Do not use outdoors or near heat sources.
- Take care not to touch any surfaces that may get hot when in use. Take care not to touch any surfaces that may remain hot for some time after use.
- Never operate the appliance when empty.

- Do not overload/overfill the appliance.
- When using for the first time your appliance may give off a 'new' smell or vapour. This will dissipate after a few uses. Do not lift or move the appliance whilst in use.
- Do not operate continuously for periods longer than those marked on the product or indicated in the instructions.
- Ensure the appliance is switched off and unplugged before changing accessories or cleaning.
- Use only as described in this manual and with Hermanos® recommended attachments only.

CLEANING & MAINTENANCE

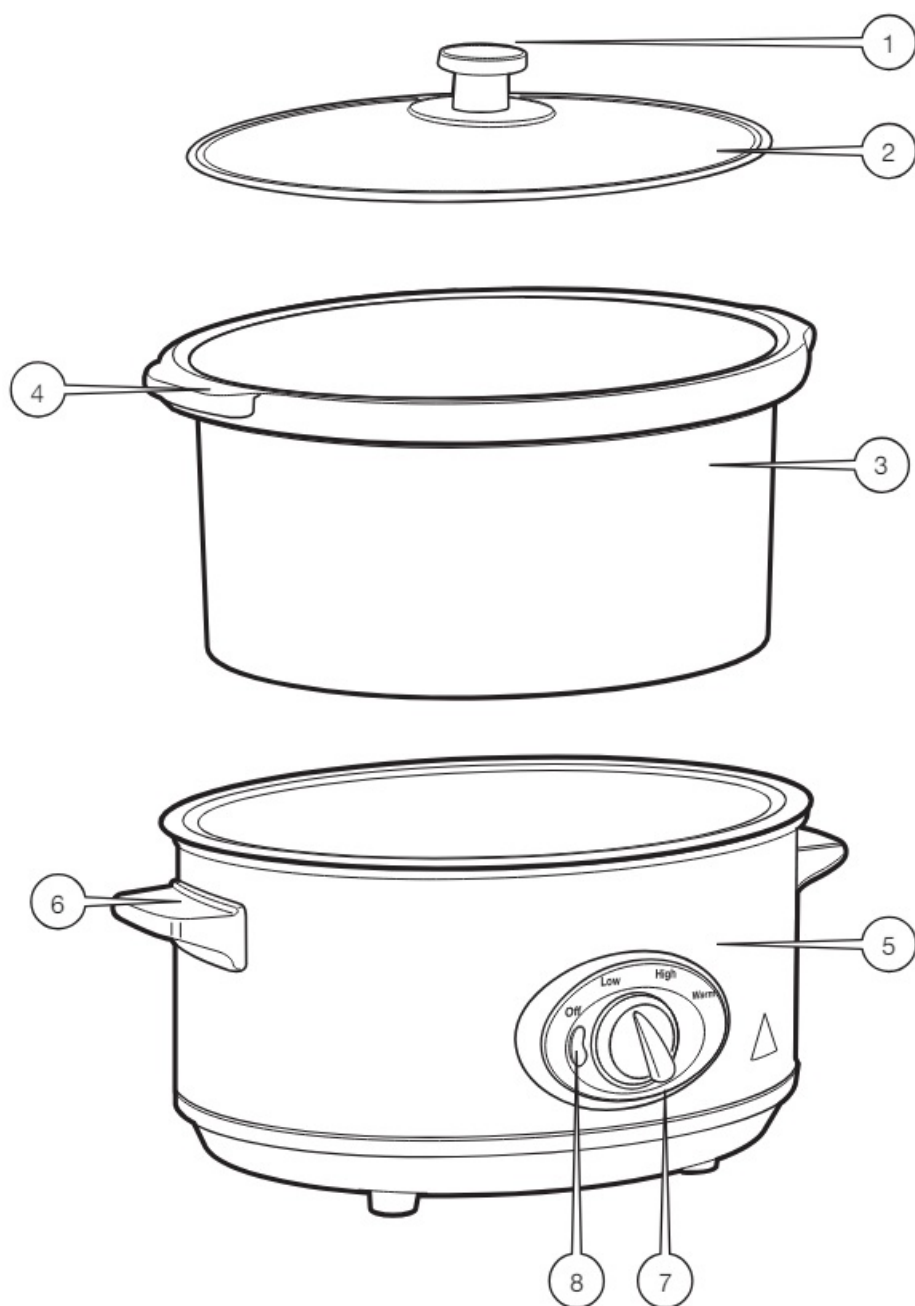
- Never soak or immerse electrical or heating components and or a component that has a plug attached.
- Hand washing is recommended; soak in warm soapy water and wipe down using a soft sponge. To remove stubborn stains, use a non-abrasive cleaning brush.
- Do not use abrasive, harsh cleaning solutions or metal scouring pads.
- Never wash any electrical or heating components or a component that has a plug attached to a dishwasher.

TECHNICAL SPECIFICATION

- **Rated Voltage** 220-240V
- **Rated Power** -170W
- **Rated Frequency** 50/60Hz

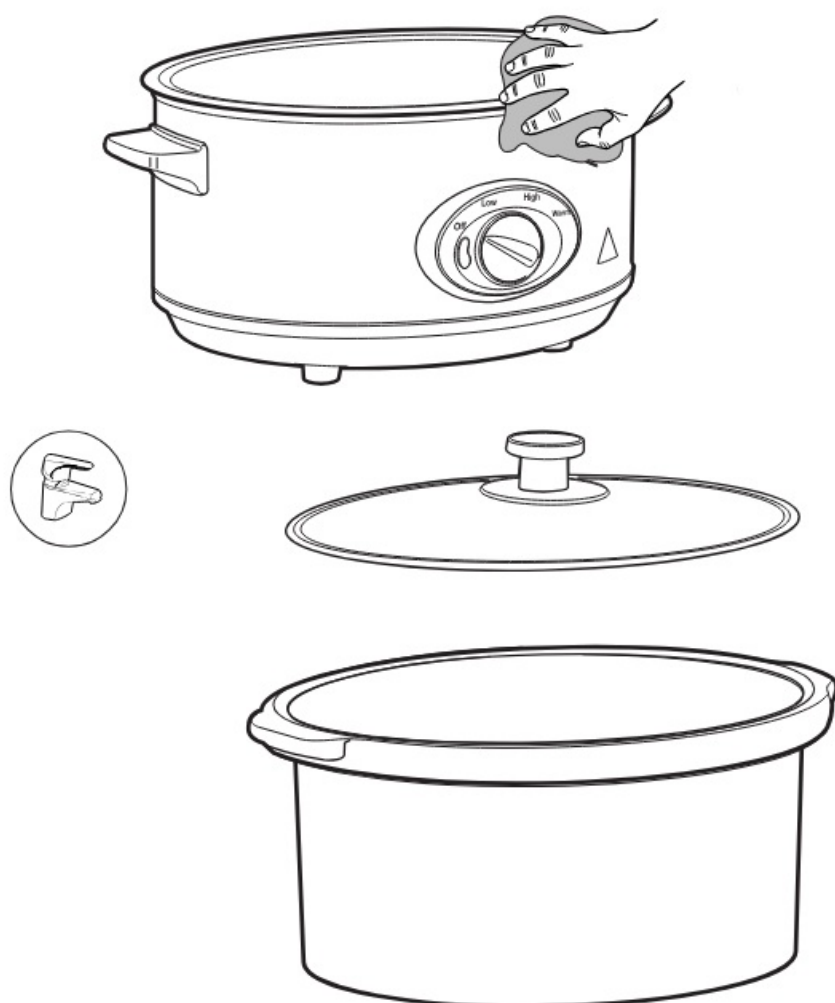
COMPONENT LIST

1. Handle.
2. Glass Lid.
3. Ceramic Bowl.
4. Bowl Handles.
5. Base Unit.
6. Unit Handles.
7. Temperature Control Dial.
8. Power Indicator.

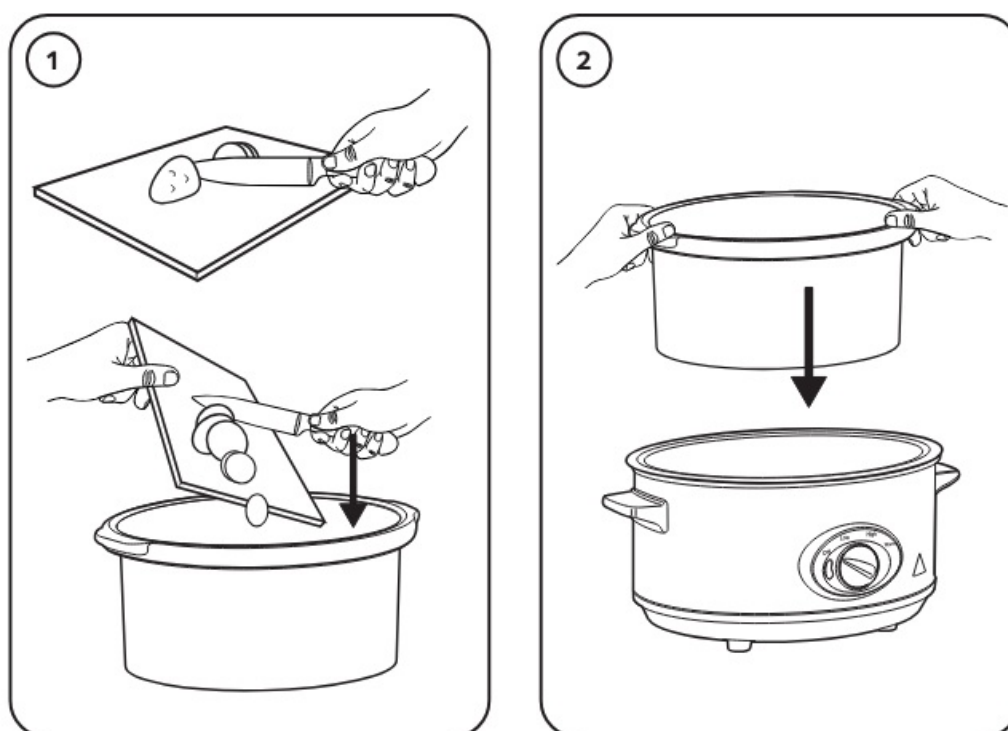


BEFORE FIRST USE

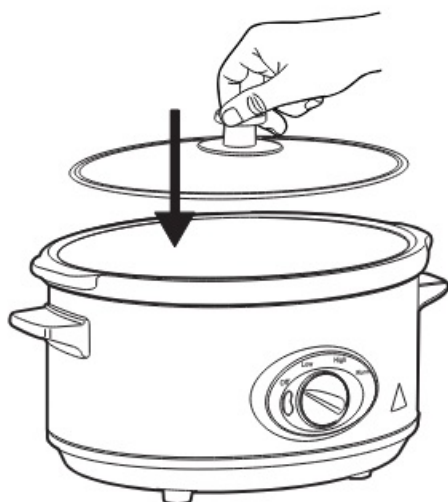
- Wipe with a damp cloth.
- **CAUTION** Do not immerse in water.



OPERATION



3



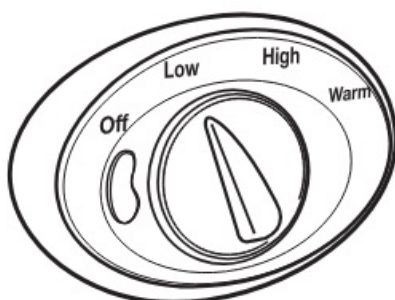
4



5

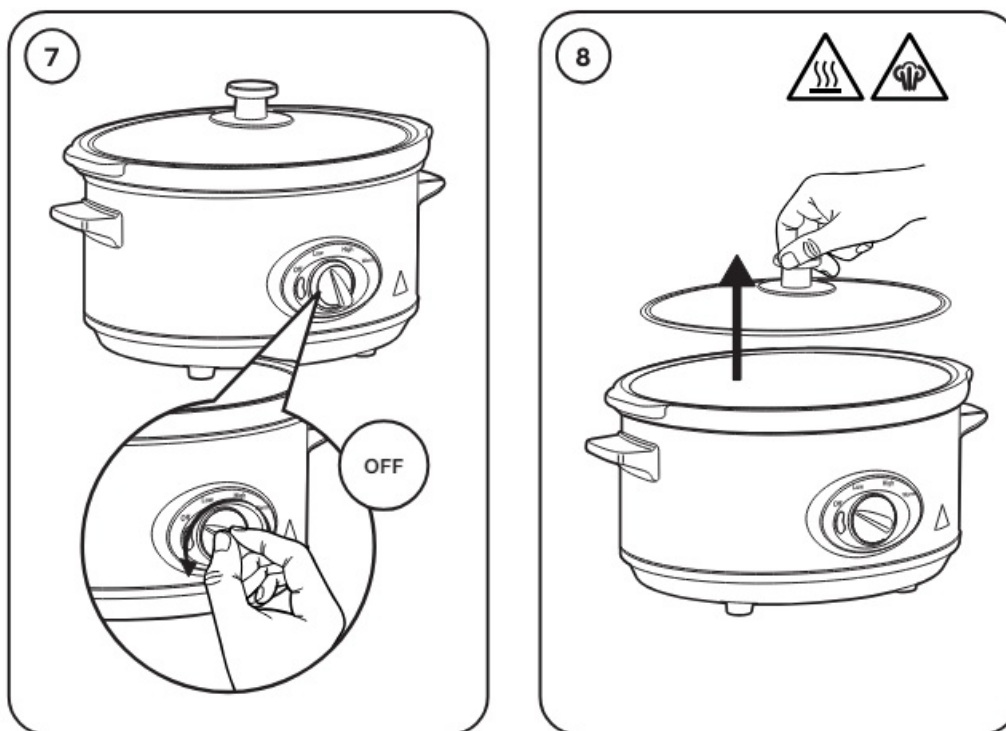
LOW - 6-8 UUR / HOURS

HIGH - 3-5 UUR / HOURS



6



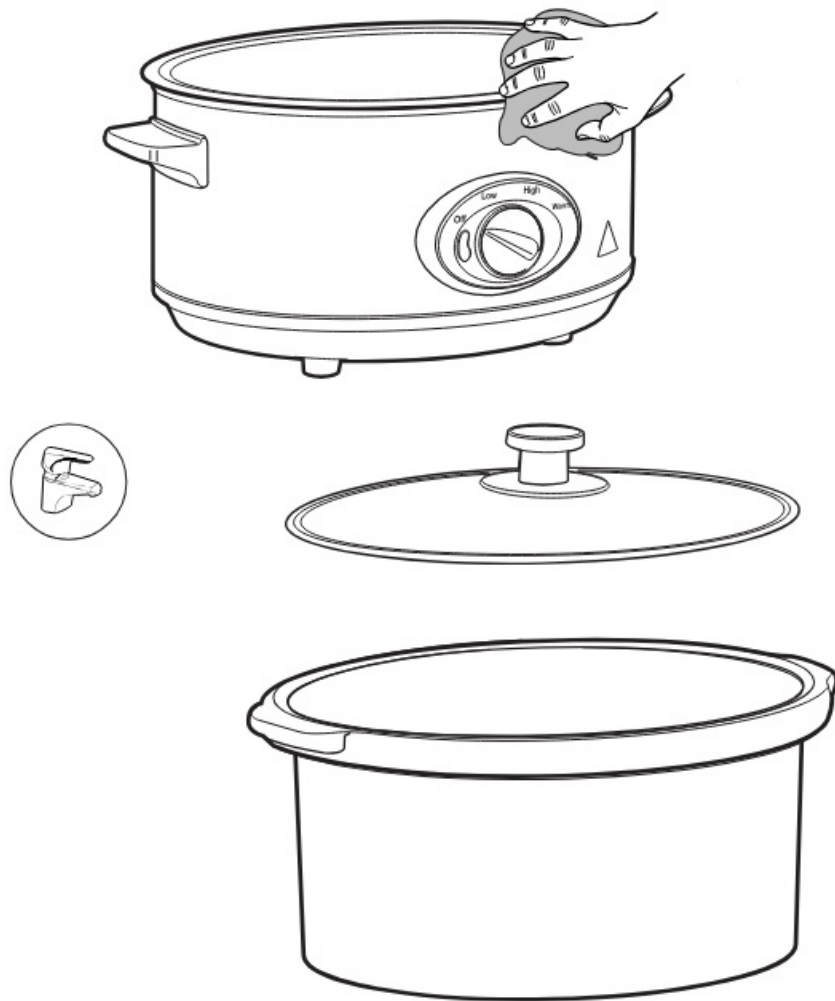


TIPS

- Always position the appliance on a flat and stable surface with sufficient space around all sides.
- Ensure the area the appliance is positioned in is fully ventilated.
- The appliance must be at least half full for best results.
- If cooking soups, ensure 5cm of space is left from the top of the ceramic bowl.
- Ingredients sliced into smaller pieces will cook faster.
- Do not use frozen meat or poultry unless it is thoroughly thawed first.
- Always use wooden or silicone utensils to add and remove food from the base unit. Do not overload.
- All ingredients added must be pre-prepared beforehand.
- DO NOT attempt to slice ingredients while positioned inside the appliance.
- Always have the glass lid correctly fitted during use. Do not use without the lid in place. The lid can be removed during use to stir food.
- Avoid removing the lid unnecessarily as the built-up heat will escape.
- Take care when removing the lid as excess steam may be vented causing possible scalding injuries.
- Temperatures can be adjusted at any time during the operation if required.
- Avoid touching any part of the appliance once in operation.
- The surfaces will get very hot. The use of an oven mitt is highly recommended.
- Once the food is fully cooked, switch it off by turning the dial to "OFF" and disconnect the power cord.
- If you wish you keep foods warm, position the dial to "WARM".
- Allow the appliance to fully cool before removing the ceramic bowl.
- Ensure the ceramic bowl is thoroughly cleaned before the next use.

MAINTENANCE

- Wipe with a damp cloth.
- **CAUTION** Do not immerse in water.



DISPOSAL INFORMATION

- Please recycle where facilities exist. Check with your local authority for recycling advice.

CUSTOMER SERVICE

- If you are having difficulty using this product and require support, please contact service@hermanosglobaltrading.com.

WARRANTY

- Please retain a proof of purchase receipt or statement as proof of the purchase date.
- The warranty only applies if the product is used solely in the manner indicated in the warnings page of this manual, and all other instructions have been followed accurately.
- Any abuse of the product or how it is used will invalidate the warranty.
- Returned goods will not be accepted unless re-packaged in their original packaging and accompanied by a relevant and completed returns form.

- This does not affect your statutory rights. No rights are given under this warranty to a person acquiring the appliance second-hand or for commercial or communal use.


COPYRIGHT

- All materials in this instruction manual are copyrighted by Hermanos®.
- Any unauthorised use may violate worldwide copyright, trademark, and other laws.

THANK YOU

- Thank you for purchasing your product/appliance. Should you require further assistance with your purchase, you can contact us at service@hermanosglobaltrading.com.

Documents / Resources

<p>Slow Cooker</p>  <p><small>Hermanos</small></p>	<p>hermanos SC01B Slow Cooker [pdf] User Manual SC01B Slow Cooker, SC01B, Slow Cooker, Cooker</p>
---	---

References

- [🌐 Global Trading | For all your trading needs globally.](#)
- [User Manual](#)

Manuals+. Privacy Policy

This website is an independent publication and is neither affiliated with nor endorsed by any of the trademark owners. The "Bluetooth®" word mark and logos are registered trademarks owned by Bluetooth SIG, Inc. The "Wi-Fi®" word mark and logos are registered trademarks owned by the Wi-Fi Alliance. Any use of these marks on this website does not imply any affiliation with or endorsement.