



## HERITAGE Flat Bottom Instructions

[Home](#) » [HERITAGE](#) » HERITAGE Flat Bottom Instructions 

### Contents

- 1 [HERITAGE Flat Bottom](#)
- 2 [Specifications:](#)
  - 2.1 [Product Usage Instructions](#)
  - 2.2 [Filling the Barrel:](#)
  - 2.3 [Frequently Asked Questions](#)
  - 2.4 [Assembly INSTRUCTIONS](#)
  - 2.5 [Documents / Resources](#)
    - 2.5.1 [References](#)



### HERITAGE Flat Bottom



---

### Specifications:

- Product Name: Flat Bottom Barrel
- Model: N/A
- Material: N/A
- Color: N/A
- Dimensions: N/A

### Product Usage Instructions

#### Assembly:

Follow these steps to assemble the flat bottom barrel:

1. Ensure all components are provided.
2. Connect the flat bottom to the barrel securely.
3. Check for any leaks or loose fittings before use.

#### Filling the Barrel:

To fill the barrel with your desired content, follow these steps:

1. Open the top lid of the barrel.
2. Pour the contents carefully into the barrel.
3. Avoid overfilling to prevent spillage.

#### Usage:

Once assembled and filled, use the flat bottom barrel as follows:

- Place the barrel on a flat surface.
- Handle with care to avoid damage.
- Follow specific instructions for the intended use of the barrel.

## Frequently Asked Questions

### Q: How do I clean the flat bottom barrel?

A: To clean the barrel, empty any remaining contents, rinse with warm water, and let it air dry completely before reuse.

### Q: Can I use the flat bottom barrel for hot liquids?

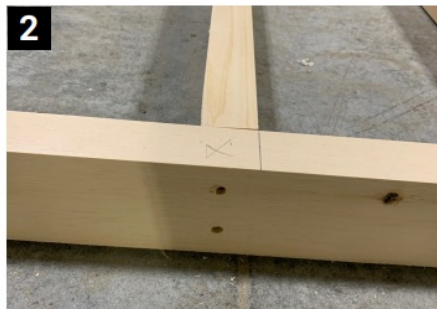
A: It is recommended to check the product specifications for temperature limits. Avoid using the barrel for liquids exceeding those limits.

### Q: Is the flat-bottom barrel dishwasher safe?

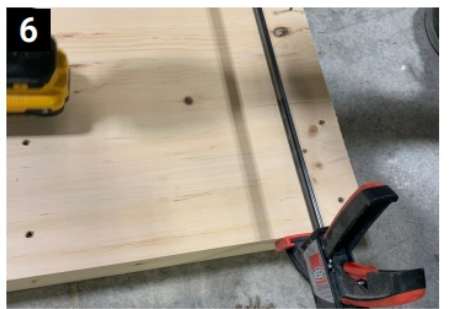
A: Refer to the product manual for cleaning instructions. Some barrels may be dishwasher safe, while others require handwashing.

## Assembly INSTRUCTIONS

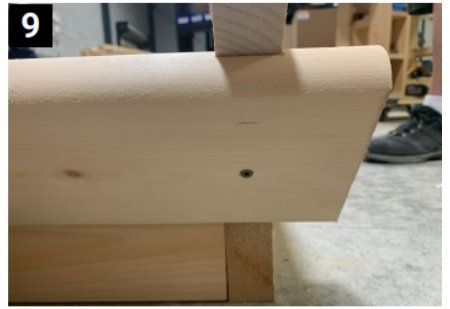
1. Floor base. On level surface screw 5 long boards with the 2 56" end boards
2. screws into each board
3. Lay floor boards on and start at one end and screw it down. Keep floor boards as tight together as possible



4. 2 screws into each floor base. Leave Center long board with no screws. Walk isle area.
5. No screws in Center isle way.
6. Use a clamp to pull boards together if needed



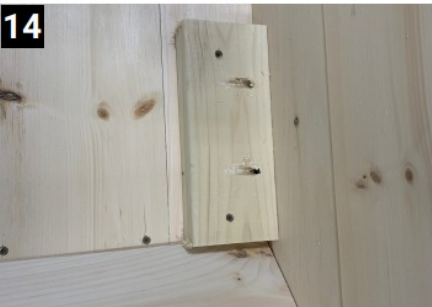
7. Lay a left stave and right stave on each side
8. Lay front wall door pc on floor
9. Screw staves to front wall section



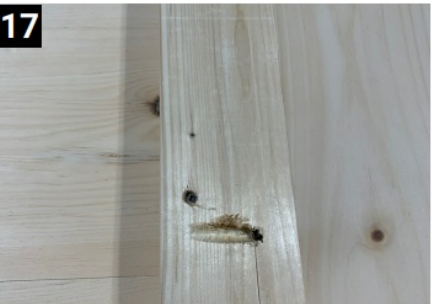
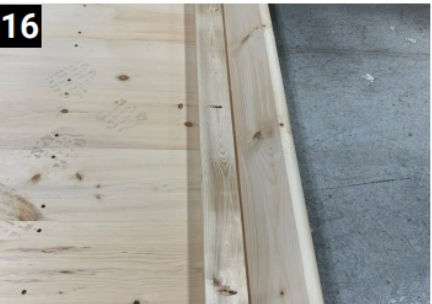
10. Screw both sides
11. Do same with first pc in back wall.
12. Put board tight to wall and fasten with 1 screw.



13. Front wall and back wall should over hang floor at both ends
14. Screw down floor cleats then push down on wall board so it's tight to floor then put in the 2 pocket screws.
15. Levels sauna to floor and now secures it.



16. Put in long floor cleats and screw down into floor and into staves
17. Make sure to put screw to inside so not to miss floor frame
18. Insert door with hinges to right



19. Insert both front wall pcs
20. Screw wall together with a 4" screw
21. Put top pc of wall over door and fasten with 4" screws





22. Put a total of 4 staves on each side now and fasten into wall
23. Using bench height measuring sticks fasten Bench support cleat
24. Both benches should now be in



25. Add next back wall portion and fasten with 4" screws
26. Put more staves on at this point.
27. Add rest of back wall and fasten with 4" screws



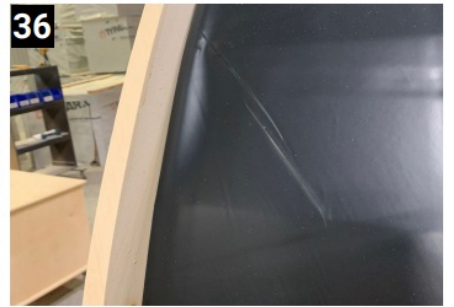
28. Put staves on and fasten on. Leave the last 8 staves unscrewed to allow putting in the top stave
29. Set top stave in and then close up staves tight. Screw all staves down with screws now
30. Should now look like this



31. Put roof membrane over and make it even down both side. Staple over front staves
32. Cut off excess plastic
33. Attach barge boards. Center top one and fasten on.



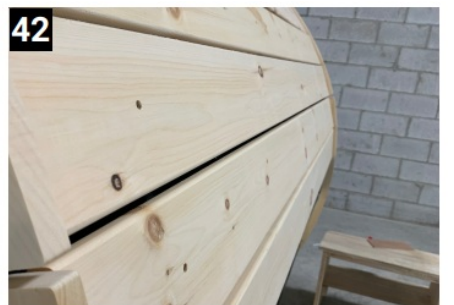
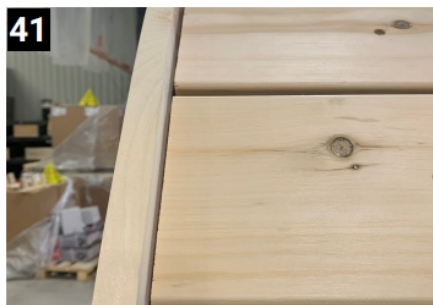
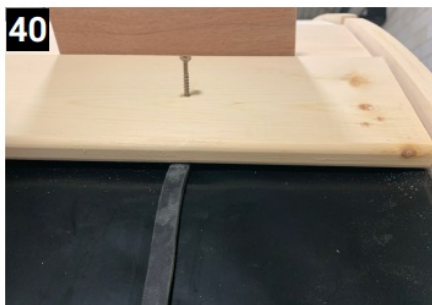
- 34. Use 3 screws in each one
- 35. Do same process for back barge boards
- 36. Makes a nice water seal to allow water run off.



- 37. Put neoprene strips over and 6" away from barge boards
- 38. Screw through strip on both sides to hold it in place
- 39. Vent is Center. Put 1/4" space between top 2 roof boards on Center.

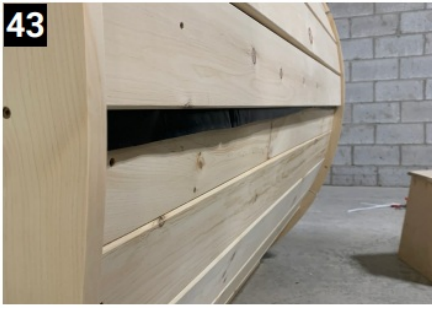


- 40. When attaching roof boards make sure screw goes through neoprene strip for water seal
- 41. Keep ends even with barge boards to look nice
- 42. About 1/4" spacing between roof boards



- 43. Trim excess plastic off
- 44. Fasten door handle about 21" from top of door
- 45. Fasten inside door handle middle of outside handle across door





46. Inside door handle

47. Attach clothes hook

48. Fasten back rest with screw into pre drilled holes



49. Put in headrest

50. Finished



## Documents / Resources



[HERITAGE Flat Bottom](#) [pdf] Instructions  
Flat Bottom, Flat, Bottom

## References

- [User Manual](#)

[Manuals+](#), [Privacy Policy](#)

This website is an independent publication and is neither affiliated with nor endorsed by any of the trademark owners. The "Bluetooth®" word mark and logos are registered trademarks owned by Bluetooth SIG, Inc. The "Wi-Fi®" word mark and logos are registered trademarks owned by the Wi-Fi Alliance. Any use of these marks on this website does not imply any affiliation with or endorsement.