



# Hera DY 2BBPR-DY Dynamic Controller 24V Radio Control User Manual

[Home](#) » [Hera](#) » Hera DY 2BBPR-DY Dynamic Controller 24V Radio Control User Manual 

# **Hera**®


**Assembly and operating Instructions**  
**Hera Dynamic-Controller 24V Radio Control 75W**

## Contents

- [1 Intended use](#)
- [2 Assembly dimensions](#)
- [3 Remote Control](#)
- [4 Documents / Resources](#)
  - [4.1 References](#)

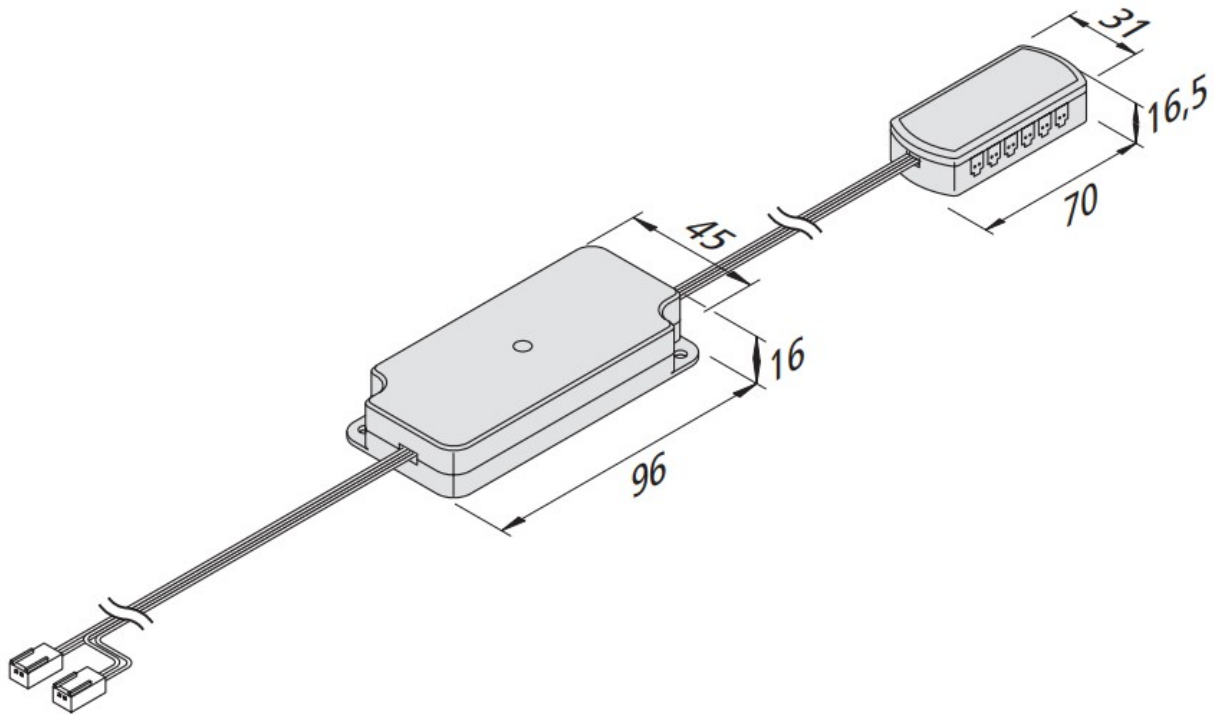
## Intended use

Dynamic-Controller to connect to electronic safety isolating converter LED 24/...W with remote control; this product is for indoor use only.

1.  Disconnect from the mains supply before attempting to mount/ dismount the lighting fixture.
2. Faulty parts should only be replaced with original parts.
3. Always fully insert all plug connections.
4. Only approved for connection to Hera LED transformers 24V with a maximum output power of 200 W.
5. Hera grants no warranty when other LED converters as the prescribed converters are used.
6. The total load may not exceed the nominal load of the converter.
7. The specified installation distances of the converter must be maintained.

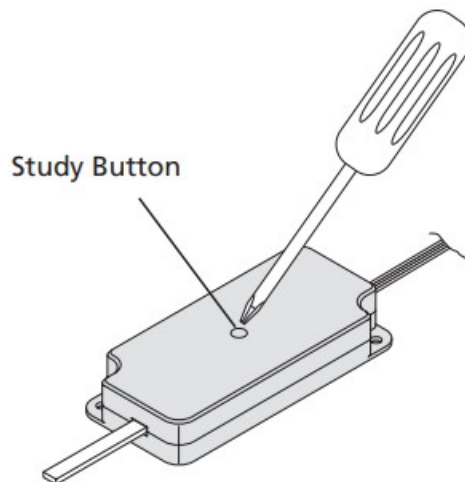
## Assembly dimensions

⚠ both LED 24 plugs must be inserted in the 12-way distributor of the converter to the previous 12-way distributor of converter LED 24/...W



## Assembly

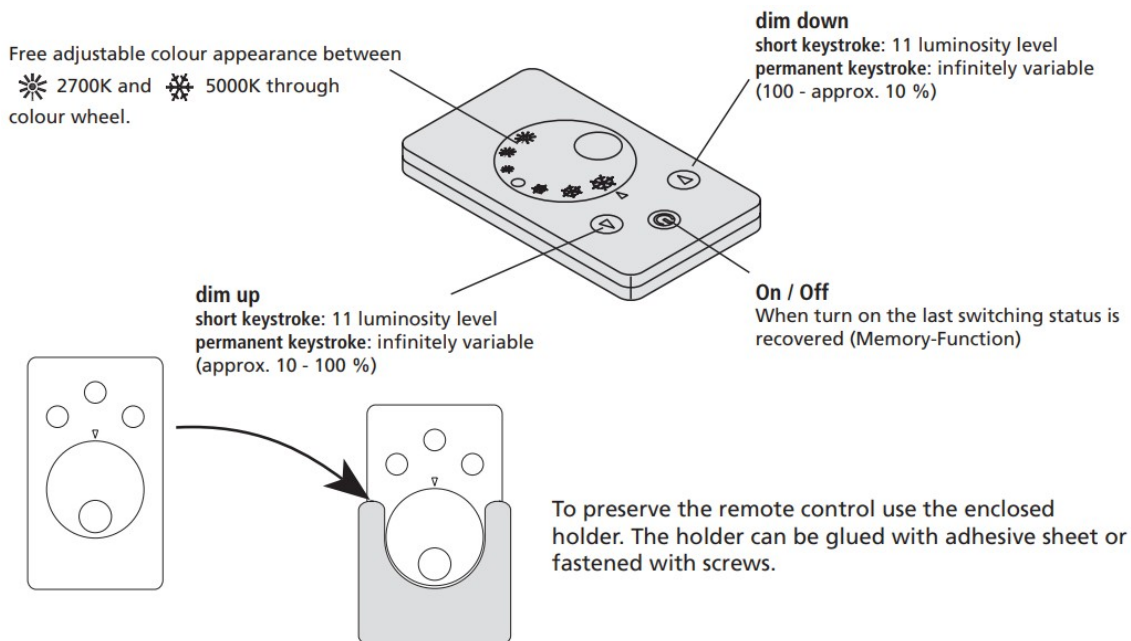
1. Connect the LED converter to the mains.
2. Connect the Dynamic-Controller to the distributor of the converter. Point 3 – 6 are only necessary to adjust further Dynamic-Controller to the same remote control:



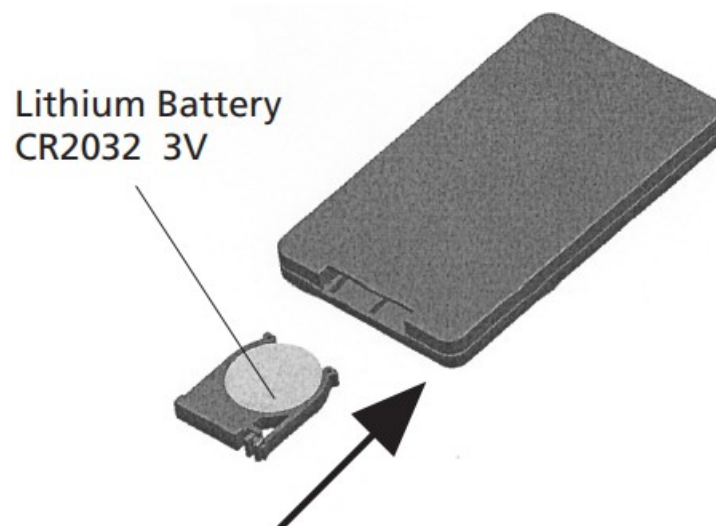
3. Push the „Study Button“ in the receiver with a sharpen object such as screwdriver or refill for a ballpoint pen.  
The indicator lamp turns on blue.
4. Press the on/off button of the radio telecontrol for approx. 1 second. The indicator lamp flashes and turns off.
5. After finish above steps, the indicator lamp is still on. It means learning is failed. Please repeat the process again.
6. The Dynamic LED luminaires can now be controlled with the remote control.

## Remote Control

The remote control has a remote distance of max. 15m. The Dynamic-Controller has a memory function of the performance before a disconnection from the mains. After reestablish the mains connection the Dynamic LED luminaires operate in the performance before the power failure.



### Installation of the Battery



### Multiway switching

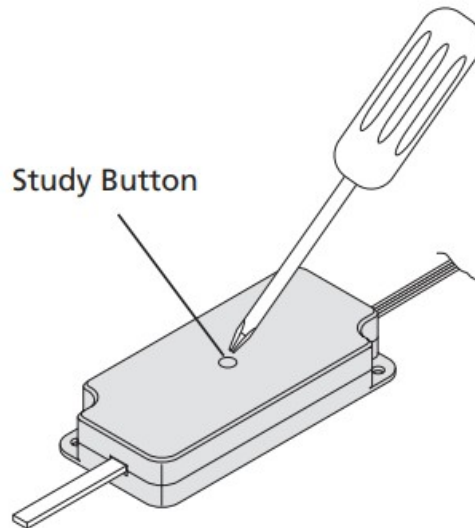
It is possible to program up to 7 remote controls to one or more controllers.

When using the multiway switching it could be possible to press the button of the remote control twice. This is no failure!

A combination of several Hera remote controls (mounting, recessed, 4-Channel, Flush-mounted) is possible.

### Reset-function

Press the study button three times (within 1 sec.) to delete all programmed remote controls.



### Declaration of Conformity:

Hera GmbH & Co. KG declares that the product „Hera Dynamic-Controller 24V Radio Control“ corresponds to the directive 2014/53/EU. The full text of the EU-Declaration of Conformity is available on the following internet address: <http://www.hera-online.de/en/technical-information/declaration-of-conformity.html>



Do not dispose of electrical appliances in household waste, use separate collection facilities. When replacing old appliances with new ones, the retailer is obliged by law to accept to take back your old appliance for disposal free of charge.

### Battery safety:

- Never attempt to recharge non-rechargeable batteries.
- Insert batteries correctly, observing plus (+) and minus (-) markings.
- Battery contacts should not be short-circuited.
- Only use batteries which match the recommended battery type or correspond to this type.
- Do not throw batteries into a fire as they could explode.
- Dispose of batteries safely.

### Do not throw batteries in the household waste (!)



Used batteries/ rechargeable batteries should not be disposed of with normal household waste. As a consumer, you are obligated to dispose of used batteries / rechargeable batteries at a municipal collection point or local store, where it is free of charge. The symbol of a waste container on your batteries / rechargeable batteries with a line through it means that the batteries should not be disposed of with normal household waste. The symbol below the waste container stands for Pb: Battery contains lead, Cd: Battery contains cadmium, Hg: Battery contains mercury.

This device complies with part 15 of the FCC Rules. Operation is subject to the following two conditions: (1) This device may not cause harmful interference, and (2) this device must accept any interference received, including interference that may cause undesired operation.

### FCC warning:

Any Changes or modifications not expressly approved by the party responsible for compliance could void the user's authority to operate the equipment.

**Note:** This equipment has been tested and found to comply with the limits for a Class B digital device, pursuant to part 15 of the FCC Rules. These limits are designed to provide reasonable protection against harmful interference in a residential installation.

This equipment generates uses and can radiate radio frequency energy and, if not installed and used in accordance with the instructions, may cause harmful interference to radio communications. However, there is no guarantee that interference will not occur in a particular installation. If this equipment does cause harmful interference to radio or television reception, which can be determined by turning the equipment off and on, the user is encouraged to try to correct the interference by one or more of the following measures:

- Reorient or relocate the receiving antenna.
- Increase the separation between the equipment and receiver.

-Connect the equipment into an outlet on a circuit different from that to which the receiver is connected.

-Consult the dealer or an experienced radio/TV technician for help.

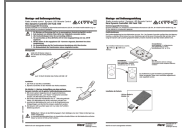
The device has been evaluated to meet general RF exposure requirement. The device can be used in portable exposure condition without restriction.

Reproduction of this document in whole or part is forbidden.

Hera GmbH & Co. KG  
Dieselstraße 9  
32130 Enger / Germany  
22601165401 23.10.2020



## Documents / Resources



[Hera DY 2BBPR-DY Dynamic Controller 24V Radio Control](#) [pdf] User Manual  
DY 2BBPR-DY Dynamic Controller 24V Radio Control, DY 2BBPR-DY, Dynamic Controller 24V  
Radio Control, Controller 24V Radio Control, 24V Radio Control, Radio Control

## References

- [User Manual](#)

### Manuals, Privacy Policy

This website is an independent publication and is neither affiliated with nor endorsed by any of the trademark owners. The "Bluetooth®" word mark and logos are registered trademarks owned by Bluetooth SIG, Inc. The "Wi-Fi®" word mark and logos are registered trademarks owned by the Wi-Fi Alliance. Any use of these marks on this website does not imply any affiliation with or endorsement.