



HENRAC TECH SA 3pin 16A Smart Wi-Fi Mechanical Wall Socket User Manual

[Home](#) » [HENRAC TECH](#) » HENRAC TECH SA 3pin 16A Smart Wi-Fi Mechanical Wall Socket User Manual 

Contents

- 1 HENRAC TECH SA 3pin 16A Smart Wi-Fi Mechanical Wall Socket
- 2 Specifications
- 3 Step 1: Power On and Setup
- 4 Step 2: Add the Device to the App
- 5 Step 3: Connect to WiFi Network-
- 6 Step 4: Pairing with Smart Home
- 7 Step 5: Pairing Confirmation
- 8 Step 6: Device Pairing
- 9 Step 7: Final Setup
- 10 Step 8: Testing
- 11 Step 9
- 12 Wiring diagram
- 13 Warranty
- 14 FAQs
- 15 Documents / Resources
 - 15.1 References



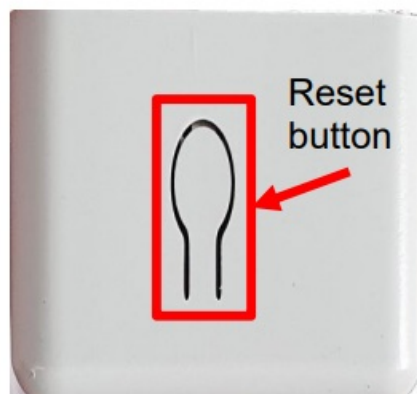


Specifications

- Product Name: Smart Wi-Fi Mechanical Wall Socket
- Manufacturer: Henrac Tech
- Contact: 060 319 2282 or WhatsApp 072 604 4306
- Email: henractech.sales@outlook.com

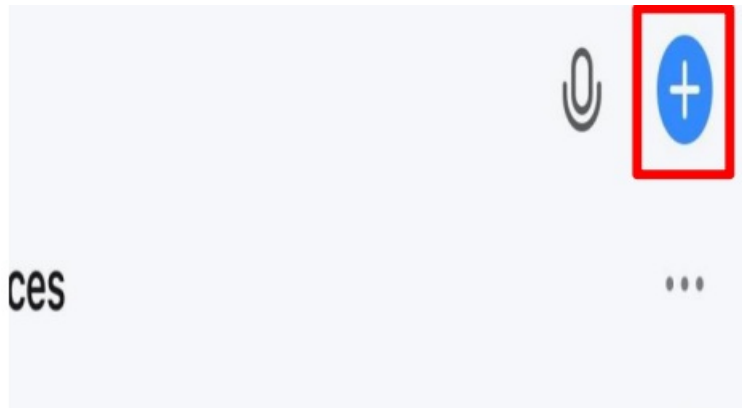
Step 1: Power On and Setup

Before you connect the device to the app, power it on & see if there is a blue LED flashing from the WiFi switch module, if there is no blue light, lift the garage module & you'll see a button. Press & hold the button for 5 seconds until the blue light flashes.



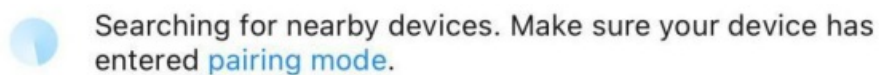
Step 2: Add the Device to the App

Once you've confirmed a flashing blue light, go onto the Smart Life or Tuya Smart app & tap the '+' icon to add the device.



Step 3: Connect to WiFi Network-

Once you've tapped on add devices, the WiFi switch module should automatically be picked up. Tap on the blue add button.



Step 4: Pairing with Smart Home

When you've tapped the blue add button, it will ask you to enter your WiFi network to which the device will be connected. You can skip steps 5 – 8 if you are successful.



Step 5: Pairing Confirmation

If your mobile device does not support Bluetooth, scroll down to the smart devices Tuya offers. Go to the electrical

section & find 'switch(WiFi)'.



Step 6: Device Pairing

Confirm that the indicator light is rapidly blinking & proceed to the following page which will pair the device to your Smart Home.



Press and hold the RESET button for 5 seconds until the indicator blinks (subject to the user manual).

Step 7: Final Setup

When the smart device pops up in pairing mode, tap on add, & confirm your WiFi network to which the device will be connected. To learn how to rename the device & switches [\[click here\]](#).

Connecting Device

Keep the network stable.



01:56

Step 8: Testing

Test the device by switching it on and off using the smart app.

Enter Wi-Fi Information

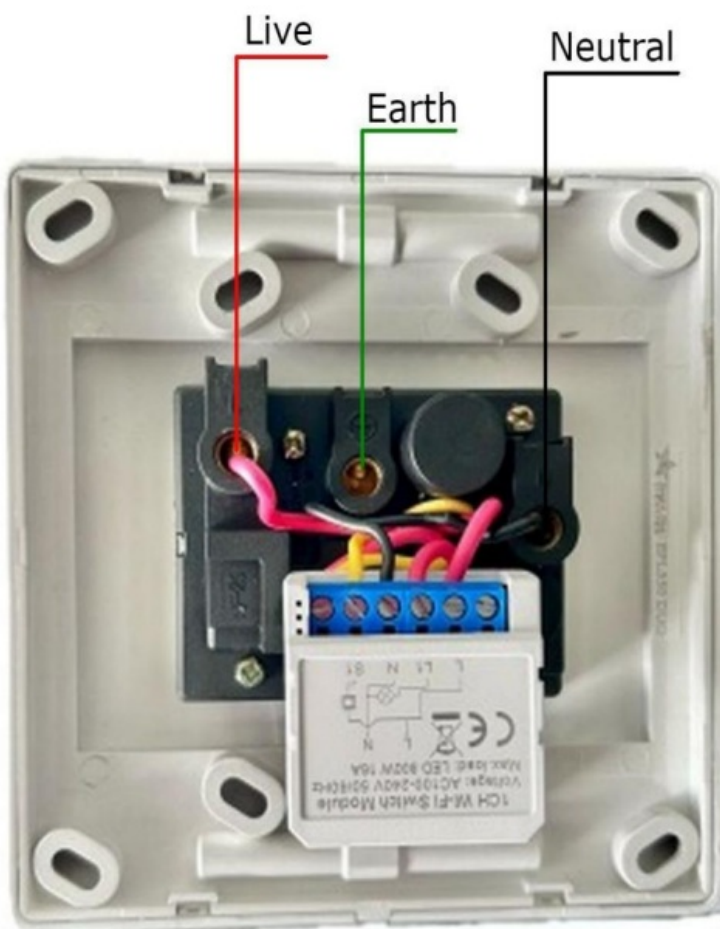
Choose Wi-Fi and enter password



Step 9

Once your device has been added, it is time to test it. Go into your smart app and switch on a switch, then manually switch off your light.

Wiring diagram



Alternative earth wire:



Warranty

WARRANTY POLICY for REPLACEMENTS

Should any product 'fail' within the first 3 months of purchase the product may be returned to us for either a repair or replacement from your nearest PostNet branch account requests the standard 'PostNet to PostNet' service. For more details regarding our return policy [\[Click Here\]](#)

IMPORTANT! Warranty void if

1. Goods are not in original packaging & are complete with all original components.
2. Goods show signs of damage due to abusive usage.
3. Goods show signs of physical alteration.
4. Goods show signs of physical damage.
5. Goods show signs of tampering.
6. Signs of power spike damage.
7. Signs of water damage (besides waterproof products).

FAQs

Q: What should I do if my device fails within the warranty period?

A: You can return the product to us for either a repair or replacement within the warranty period. Please refer to our warranty policy for detailed instructions.

060 319 2282 or WhatsApp

072 604 4306 or WhatsApp

Product: Smart Wi-Fi

Mechanical Wall Socket henractech.sales@outlook.com

Documents / Resources

	<p>HENRAC TECH SA 3pin 16A Smart Wi-Fi Mechanical Wall Socket [pdf] User Manual SA 3pin 16A Smart Wi-Fi Mechanical Wall Socket, SA 3pin, 16A Smart Wi-Fi Mechanical Wall Socket, Wi-Fi Mechanical Wall Socket, Mechanical Wall Socket, Wall Socket, Socket</p>
---	--

References

- [User Manual](#)

[Manuals+](#), [Privacy Policy](#)

This website is an independent publication and is neither affiliated with nor endorsed by any of the trademark owners. The "Bluetooth®" word mark and logos are registered trademarks owned by Bluetooth SIG, Inc. The "Wi-Fi®" word mark and logos are registered trademarks owned by the Wi-Fi Alliance. Any use of these marks on this website does not imply any affiliation with or endorsement.