

HENGJIANG C1 Bluetooth Controller



Contents [[hide](#)]

- [1 Warning](#)
- [2 Ports And Buttons Description](#)
- [3 Installation Method](#)
- [4 Documents / Resources](#)
 - [4.1 References](#)

Warning

This device complies with part 15 of the FCC Rules. Operation is subject to the following two conditions:

1. this device may not cause harmful interference, and.
2. this device must accept any interference received, including interference that may cause undesired operation.

Any changes or modifications not expressly approved by the party responsible for compliance could void the user's authority to operate the equipment.

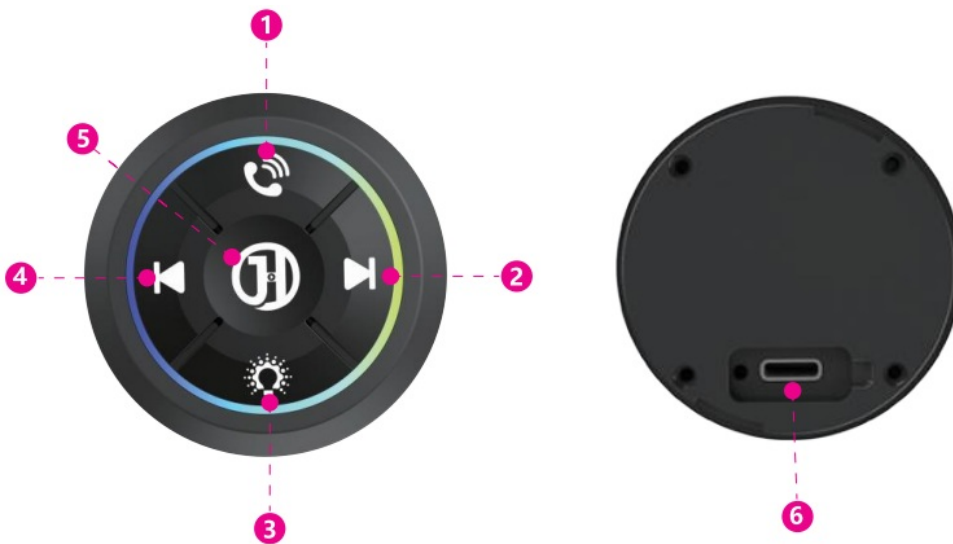
NOTE: This equipment has been tested and found to comply with the limits for a Class B digital device, pursuant to Part 15 of the FCC Rules. These limits are designed to provide reasonable protection against harmful interference in a residential installation. This equipment generates, uses and can radiate radio frequency energy and, if not installed and used in accordance with the instructions, may cause harmful interference to radio communications. However, there is no guarantee that interference will not occur in a particular installation. If this equipment does cause harmful interference to radio or television reception, which can be determined by turning the equipment off and on, the user is encouraged to try to correct the interference by one or more of the following measures:

- Reorient or relocate the receiving antenna.
- Increase the separation between the equipment and receiver.
- Connect the equipment into an outlet on a circuit different from that to which the receiver is connected.
- Consult the dealer or an experienced radio/TV technician for help.

The device has been evaluated to meet general RF exposure requirement. The device can be used in portable exposure condition without restriction.

Ports And Buttons Description

1. Refuse to answer/hang up
2. Next song/volume+
3. Atmosphere light on and off/Voice assistant
4. Previous song/volume-
5. Power on/off/pause/play/answer the phone
6. Type-C charging port



Installation Method

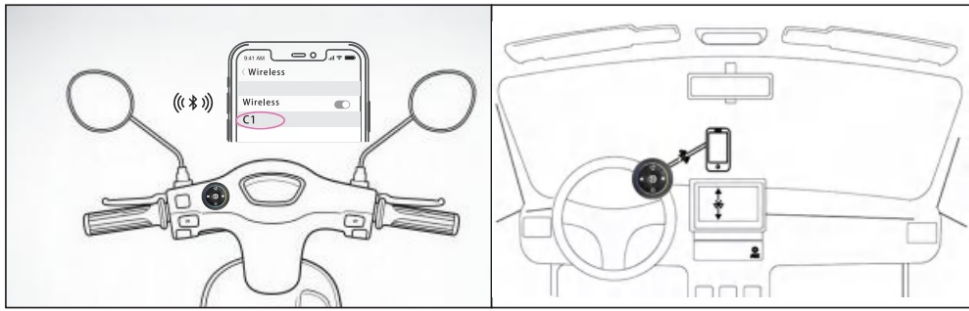
- When installing the upper cover, the direction of the national light icon should face downwards. Rotate clockwise to complete the installation.
When removing the upper cover, rotate counterclockwise to remove it.

Upper cover



clockwise rotation





• Power Operations

- **Power On:** Press [⏻] for 3s, indicator lights flash
- **Power Off:** When on, press [⏻] for 3s, indicator stays on for 1s

• Wireless Functions

- **Pairing:** When on, indicators flash, search “C1” on phone

• Call Operations

- **Answering the phone:** When the power is disconnected, click once to answer the call [📞]
- **End Call:** Click [📞] during call

• Music Playback

(When wirelessly connected to phone)

- **Play/Pause:** Click [⏮]
- **Volume Up:** In call or music mode, hold down the button [🔊]
- **Volume Down:** In call or music mode, hold down the button [🔊]
- **Previous Track:** When playing music, click the button once [⏮]
- **Next Track:** When playing music, click the button once [⏭]

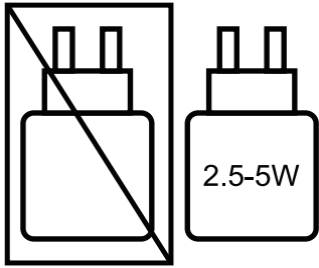
• Ambient Light

- In the power on state, click the [🌞] button to turn on the ambient light state. Click the first multi-color alternation, the second blue long light, the third green long light, the fourth red long light, the fifth white long light, and the sixth ambient light off.

• Charging Status


- **Charging in progress:** red light on
- **fully charged:** light off

The power delivered by the charger must be between min [2.5] Watts required by the radio equipment, and max [5] Watts in order to achieve the maximum charging speed.



HENGJIANG C1

Documents / Resources

	HENGJIANG C1 Bluetooth Controller [pdf] User Manual 2BKNT-C1, 2BKNTC1, C1 Bluetooth Controller, C1, Bluetooth Controller, Controller
---	---

References

- [User Manual](#)

2BKNT-C1, 2BKNTC1, Bluetooth Controller, C1, C1 Bluetooth Controller, controller,
HENGJIANG HENGJIANG

Leave a comment

Your email address will not be published. Required fields are marked *

Comment *

Name

Email

Website

☐ Save my name, email, and website in this browser for the next time I comment.

Post Comment

Search:

e.g. whirlpool wrf535swhz

Search

[Manuals+](#) | [Upload](#) | [Deep Search](#) | [Privacy Policy](#) | [@manuals.plus](#) | [YouTube](#)

This website is an independent publication and is neither affiliated with nor endorsed by any of the trademark owners. The "Bluetooth®" word mark and logos are registered trademarks owned by Bluetooth SIG, Inc. The "Wi-Fi®" word mark and logos are registered trademarks owned by the Wi-Fi Alliance. Any use of these marks on this website does not imply any affiliation with or endorsement.