



## HELVEX UDC-05 Deco Paper Holder Installation Guide

[Home](#) » [HELVEX](#) » HELVEX UDC-05 Deco Paper Holder Installation Guide 



**INSTALLATION GUIDE**  
**Deco Accessories Line**

### Technical Support and Service



Original Spare Parts

Toll Free Refacciones Originates  
(855) 267 249

[contact@helvexusa.com](mailto:contact@helvexusa.com)



**UDC-05**



**UDC-04**



**UDC-06**



**UDC-09**

Thank you for choosing HELVEX products.

We are confident that the product reliably will exceed your highest expectations. This product's functionality, aesthetics, durability, quality, and support will grant you full satisfaction for years, thus reflecting Helvex's commitment to quality, innovation, and the environment.

**⚠️ WARNING**

To reduce the risk of injury or property damage, please read all instructions before installing the product. Wear safety glasses. For any construction, installation, alteration, extension, or repair, comply with your local building codes. The product's illustration may vary in appearance from the actual product as a result of the continuous improvement process it is subject to.

This product can expose you to chemicals including lead, which is known to the State of California to cause cancer. For more information go to [www.P65Warnings.ca.gov](http://www.P65Warnings.ca.gov).

This Installation Guid

Applies to the Product in any Finishing.

Recommended Heights for Accessories Installation



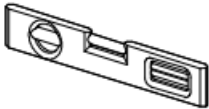

MODEL	DESCRIPTION	HEIGHT (")
UDC-04	Paper Holder	19,6 / 50
UDC-05	Towel Bar	47,2 / 120
UDC-06	Robe Hook	64,9 7165
UDC-09	Small Towel Bar	38,1 / 150

\* Recommended installation height based on FFL Finished Floor Level

**Contents**

- 1 Recommended Tools and Materials
- 2 Items Included in the Product
- 3 General Installation
- 4 Towel Bar UDC-05
- 5 Cleaning Recommendations
- 6 Documents / Resources
- 7 Related Posts

**Recommended Tools and Materials**

	flat-head screwdriver
	drill with Ø 1/4" concrete drill bit
	level
	pencil

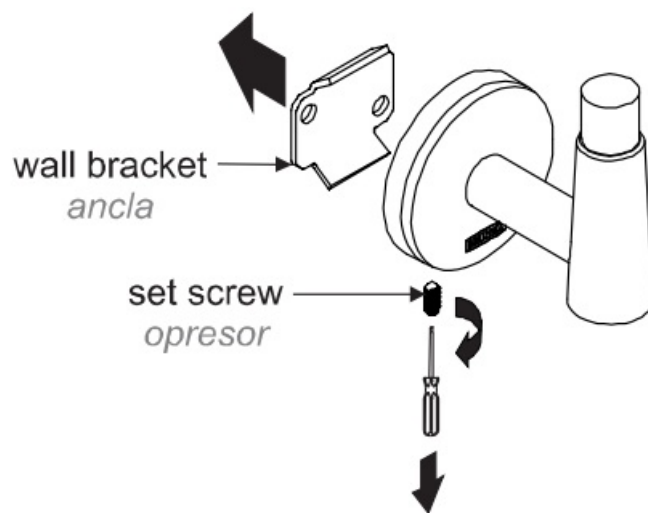
**Items Included in the Product**

fixing kit for drywall and solid wall

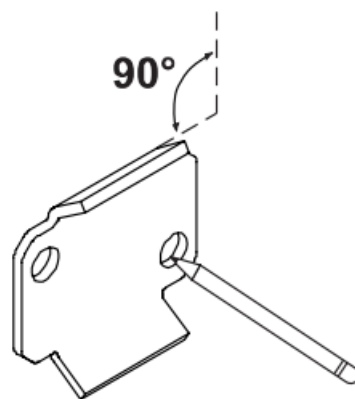


**General Installation**

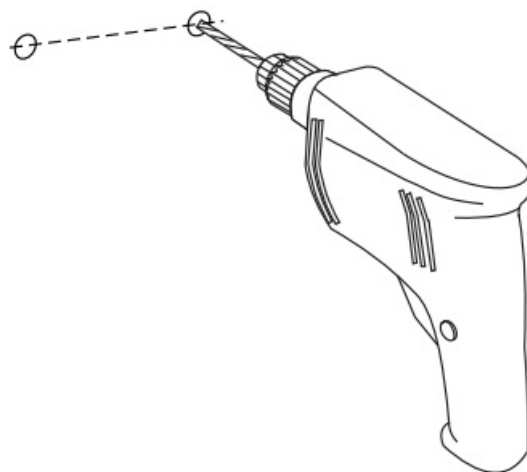
1. Unscrew the set screw with the flat-head screwdriver (not included) and remove the wall bracket.



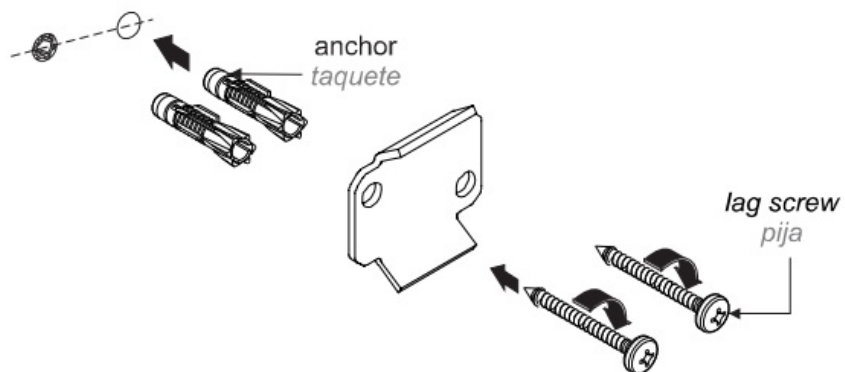
2. Place the wall bracket over the wall, level and mark the holes.



3. Drill with a Ø 1/4" concrete drill bit.

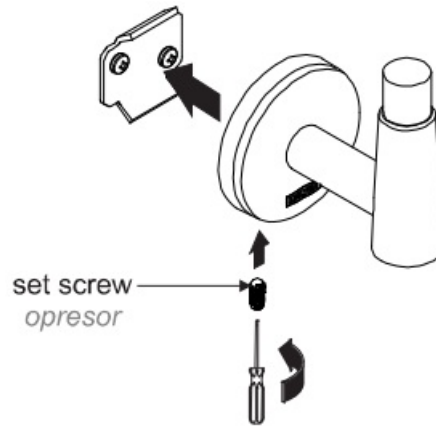


4. Insert the anchors (included) and fix the wall bracket screwing the lag screws (included).



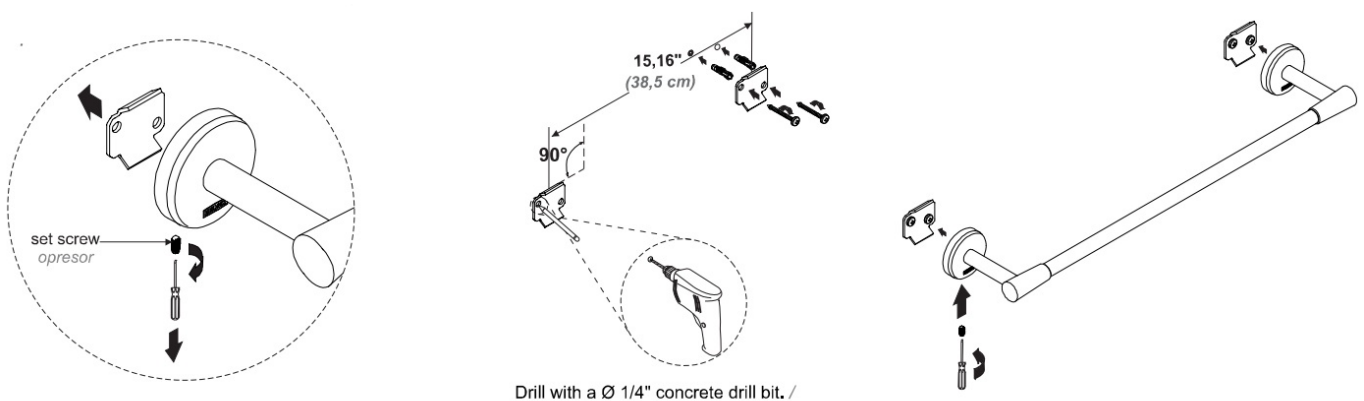
**Note:** The anchors must be inserted completely. Do not cut the anchors.

5. Attach the accessory to the wall bracket and screw the set screw to fix it.



## Towel Bar UDC-05

6. Unscrew the set screws and remove the wall brackets from the two escutcheons. Place the wall bracket over the wall, level and mark the holes. Drill with a  $\varnothing 1/4"$  concrete drill bit. Insert the anchors (included) and fix the wall brackets screwing in the lag screws. Finally, attach the accessory to the wall brackets and tighten the set screws to fix it.



Drill with a  $\varnothing 1/4"$  concrete drill bit. /

Toll free number  
Contact us: (855) 267 2498  
[contact@helvexusa.com](mailto:contact@helvexusa.com)

## Cleaning Recommendations

It is very important to follow the instructions below to preserve HELVEX products' finishings shiny and in perfect conditions:

1. Use only water and a clean cloth.
2. Do not use fibers, powders, abrasives, or chemicals.
3. Do not use sharp objects to clean the finishings.
4. It is recommended to clean your device daily.

Visit our website [www.helvexusa.com](http://www.helvexusa.com)



## Documents / Resources



[HELVEX UDC-05 Deco Paper Holder](#) [pdf] Installation Guide  
UDC-05 Deco Paper Holder, UDC-05, Deco Paper Holder

[Manuals+](#)