



Helvar Tracksensor 32xTR Installation Guide

[Home](#) » [Helvar](#) » Helvar Tracksensor 32xTR Installation Guide 

Contents

- [1 Helvar Tracksensor 32xTR](#)
- [2 Installation](#)
- [3 Technical Data](#)
- [4 Dimensions](#)
- [5 Documents / Resources](#)
- [6 Related Posts](#)

Helvar

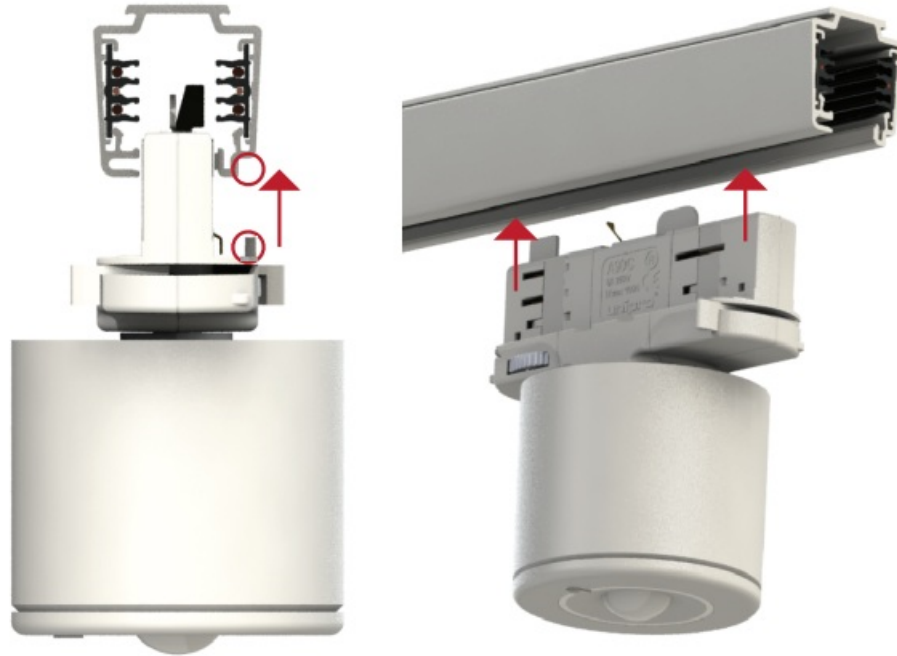
Helvar Tracksensor 32xTR



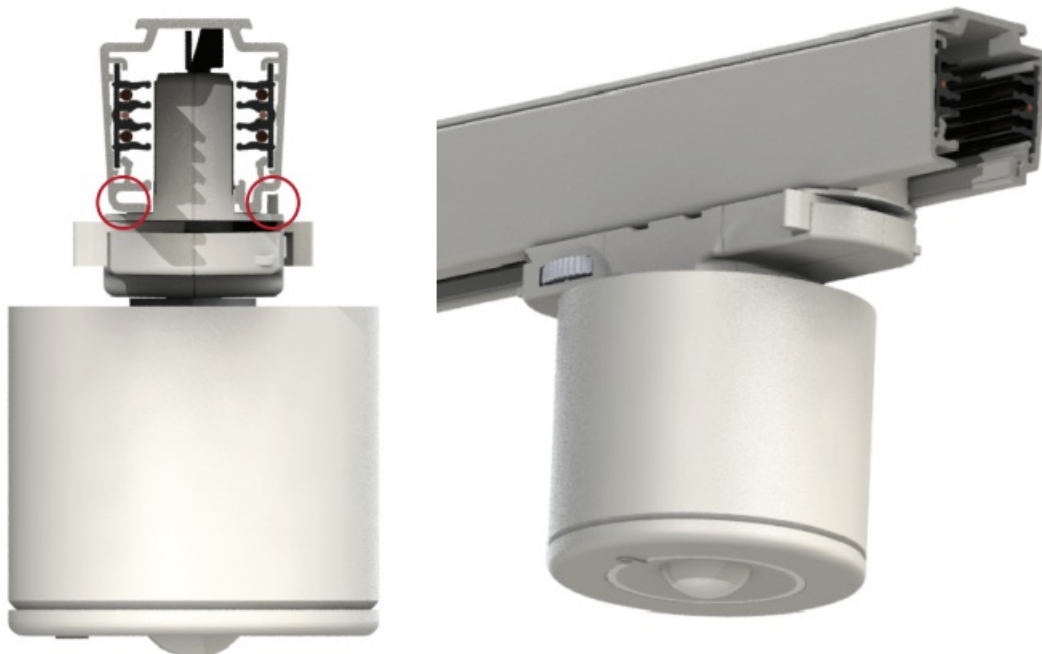
Installation

Prior to installation make sure all track connectors are positioned inside the unit. Use the levers located at each end of the unit to adjust accordingly.

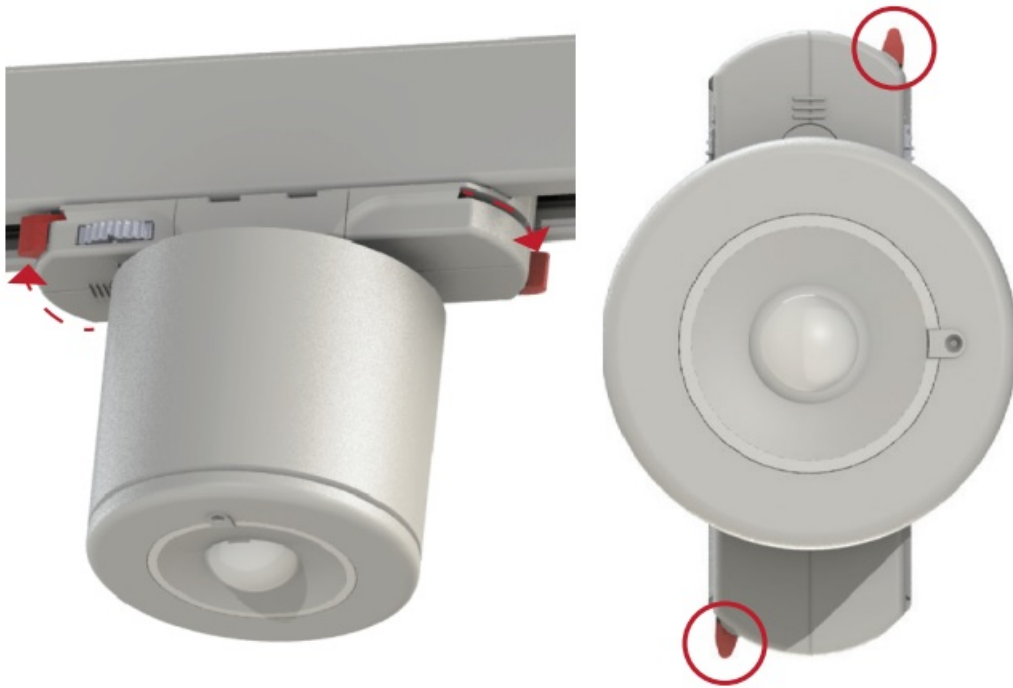
1. Make sure the rib edge of the Tracksensor is on the same side as the allocated groove within the track.
Carefully place the adaptor section of the unit into the track.



2. With the rib in its allocated groove, ensure the securing lever (located on the opposite side to the rib) is fully pressed against the underside of the track.



3. Use the locking levers at each end of the adaptor to secure the Tracksensor in place. The unit will be fully fitted when both levers 'click' and are parallel to the track. Ensure the Tracksensor sits flush to the track.



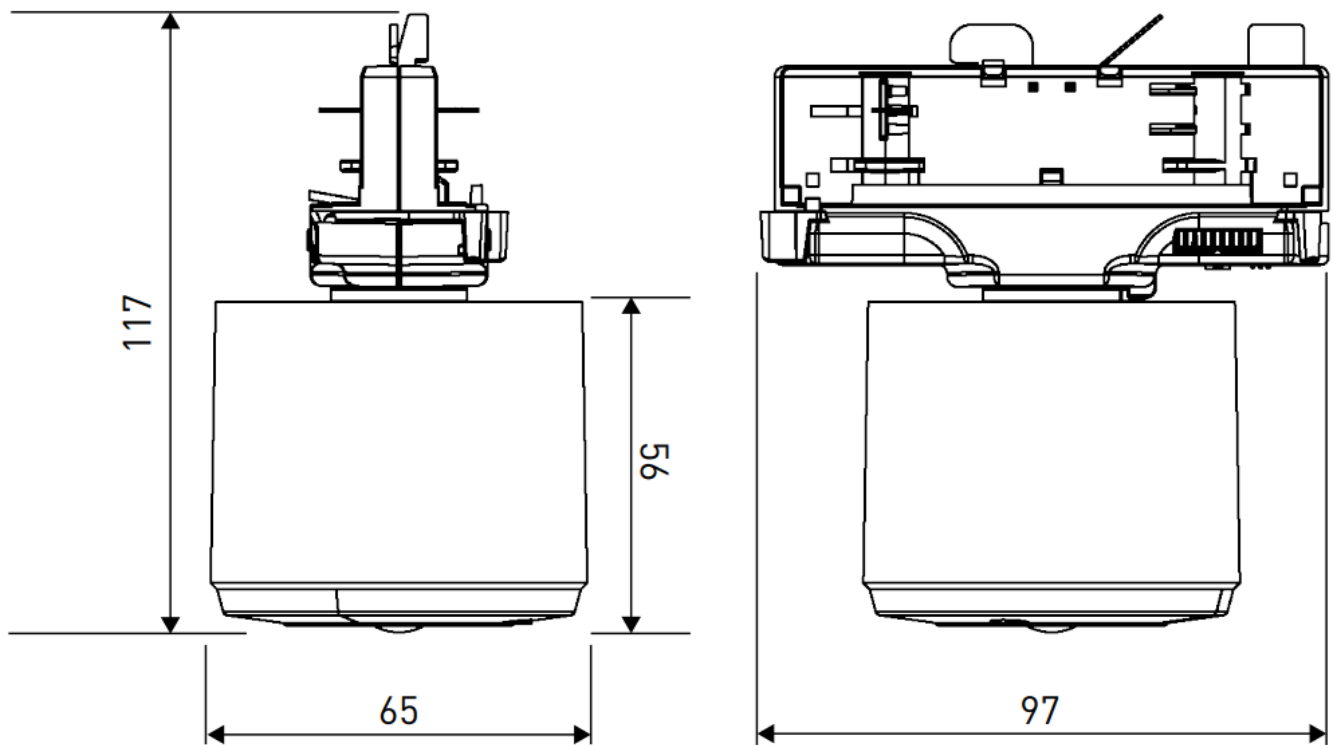
Technical Data

Conformity and standards

- **Conformity:** UK CA CE
- **EMC emission:** EN 55015, EN 61000-6-3
- **EMC immunity:** EN 61547
- **Safety:** EN 61347-1, for track IEC 60570
- **Environment:** Complies with WEEE and RoHS directives

For specific product information and Technical data refer to the relating 32X Sensor and SBB-X Surface Mounting Box datasheets.

Dimensions



- Tracksensor only supports DALI tracks.
- Helvar takes no responsibility with any track changes made which could affect compatibility.
- Compatible tested DALI-lighting tracks.

Unipro TC3x, 2021

GLOBAL Trac Pulse, 2021

A.A.G. Stucchi ONETRACK®, 2021

Helvar Ltd,

Hawley Mill, Hawley Road, Dartford. DA2 7SY. UK

www.helvar.com

+44 (0) 1322 617200

Documents / Resources



[Helvar Tracksensor 32xTR](#) [pdf] Installation Guide
Tracksensor 32xTR, Tracksensor, 32xTR