

**HelloBirdie LIM-
BRDB-XXX
Smart Bird Bath
with App Based
Recognition**



HelloBirdie LIM-BRDB-XXX Smart Bird Bath with App Based Recognition User Manual

[Home](#) » [HelloBirdie](#) » HelloBirdie LIM-BRDB-XXX Smart Bird Bath with App Based Recognition User Manual 

Contents

- [1 HelloBirdie LIM-BRDB-XXX Smart Bird Bath with App Based Recognition](#)
- [2 Product Information](#)
- [3 What's Included](#)
- [4 Tech Specs](#)
- [5 Components](#)
- [6 Downloading the App](#)
- [7 Using the App](#)
- [8 Filling the Hummingbird Accessory](#)
- [9 Using the Fruit Skewer Accessory](#)
- [10 Assembly Instructions](#)
- [11 Charging the Camera](#)
- [12 Assembly & Cleaning](#)
- [13 LIMITED WARRANTY](#)
- [14 Documents / Resources](#)
 - [14.1 References](#)



HelloBirdie LIM-BRDB-XXX Smart Bird Bath with App Based Recognition



Product Information

Specifications:

- **Product Model:** LIM-BRDB-XXX
- **Water Resistant:** IP65
- **Water Capacity:** 1.4L
- **Dimensions:** 10.7 x 13 x 11.8

Product Components:

- Bird Bath with Solar Panel
- HD Camera with Reset Pin
- Fruit Skewer Accessory
- Humming Bird Accessory
- Pole & Ground Stake with (3) Pole Sections
- Mounting Adapter & Hardware
- 38 Magnetic USB Charging Cable
- User Manual

Downloading the App:

1. Scan the QR Code.
2. Open the smartphone camera and hover over the QR code. When the camera recognizes the code, a prompt will appear to visit a link.
3. Tap the prompt to be directed to the App Store and download the Hello Birdie App.

Using the App:

1. Sign Up for an Account.
 1. Open the Hello Birdie App and tap Sign Up on the Log-In Screen.
 2. Enter your email address and complete the account setup process.
 3. Log in using the created credentials to get started.

Setting up the Camera:

1. Ensure connection to a 2.4GHz WiFi network.
2. Add a Camera by tapping the + button on the screen.
3. Power on the Camera and follow voice prompts. Insert the Reset Pin into the Reset Button Hole.
4. Wait for reset confirmation, configure WiFi settings, and proceed with setup.

FAQ:

Can I share my Hello Birdie Camera with friends and family?

Yes! And sharing the camera is very easy – just make sure your friends and family have also downloaded the app and created a user account. Once they've created an account, just navigate to Camera Options > Share Camera to enter their email address.

What makes the Hello Birdie a smart Bird Bath?

The Hello Birdie App is equipped with artificial intelligence software. As birds visit the Bird Bath, The camera captures images that are then run through the app's software to identify them!

Does the Hello Birdie need WiFi?

Yes, without a strong WiFi connection, the Hello Birdie Bird Bath's smart features will not work properly. For best results, use a 2.4GHz WiFi network. It generally provides more expansive coverage and will be able to extend the signal outside your living space

What if I only have a 5G signal?

Your wireless router may be a dual-band model that also offers 2.4G connectivity; you may be able to switch it from 5G to 2.4G, or you may be able to use an affordable 5G to 2.4G adapter.

How long will the battery last?

A device without a solar panel will last 1-2 weeks without a charge, depending on how active it is. Feeders/Bird Baths with a solar panel can go for weeks, months or even more without having to charge - depending on the climate and conditions!

Do I need to go through camera setup if I move my Hello Birdie?

If the Bird Bath is moved to a different location that has a new WiFi network, the Camera will need to be reconfigured to this network.

What if the bird recognized by the AI software is incorrect?

This software's database is built up by the community, and is only made better by those that engage with it actively. When you notice a bird is incorrectly identified, simply tap the Inaccurate? link on the Identification Details page. If you know the species, enter that information and submit!

Why is the status of my camera "Offline" and requires additional attention?

Depending on your feeder's location, the camera might be at 0% battery if there isn't enough sun exposure. You will need to charge the camera via the Solar Panels or by using the included Type-C Charging Cable. OR Your Camera has temporarily lost connection or is no longer communicating with your router. If the issue persists, please try rebooting your router and/or modem.

I don't hear any prompts after attempting to scan the QR code. Am I doing something wrong?

The Camera needs to recognize and scan the QR code in order to complete the setup process. Hold the Camera lens side up in one hand and the phone with the QR code facing the camera lens in the other hand. It's helpful to slowly move them closer and further apart from one another until the code is read by the camera. The sweet spot is between 4-6 inches.

Is Hello Birdie Camera Water Resistant?

Yes! The Hello Birdie has a rating of IP65 – which means it is totally protected against dust and protected against low-pressure jets of water from all directions, but not intended to be submerged.

How do I know if the Camera is powered on?

When the Camera is powered on, the blue indicator light on the front of the camera will illuminate. If the light isn't on, press and hold the Power Button for 3-5 seconds until the light comes on.

How does the camera stay charged?

While the camera is installed, it is connected to the solar panel as a source of power. This supplies a steady stream of energy, but the camera may still need to be charged away from the Bird Bath (i.e. inclement weather with cloud coverage). In this case, it can be charged indoors with the included Type-C Magnetic

Charging Cable.

What's Included



Bird Bath
with Solar Panel



HD Camera
with Reset Pin



Fruit Skewer
Accessory



Humming Bird
Accessory



Pole & Ground Stake
with (3) Pole Sections



Mounting Adapter
& Hardware



38" Magnetic USB
Charging Cable



User Manual

Tech Specs

• Bird Bath

- Product Model: LIM-BRDB-XXX
- Water Resistant: IP65
- Water Capacity: 1.4L
- Dimensions: 10.7" x 13" x 11.8"

• Solar Panel

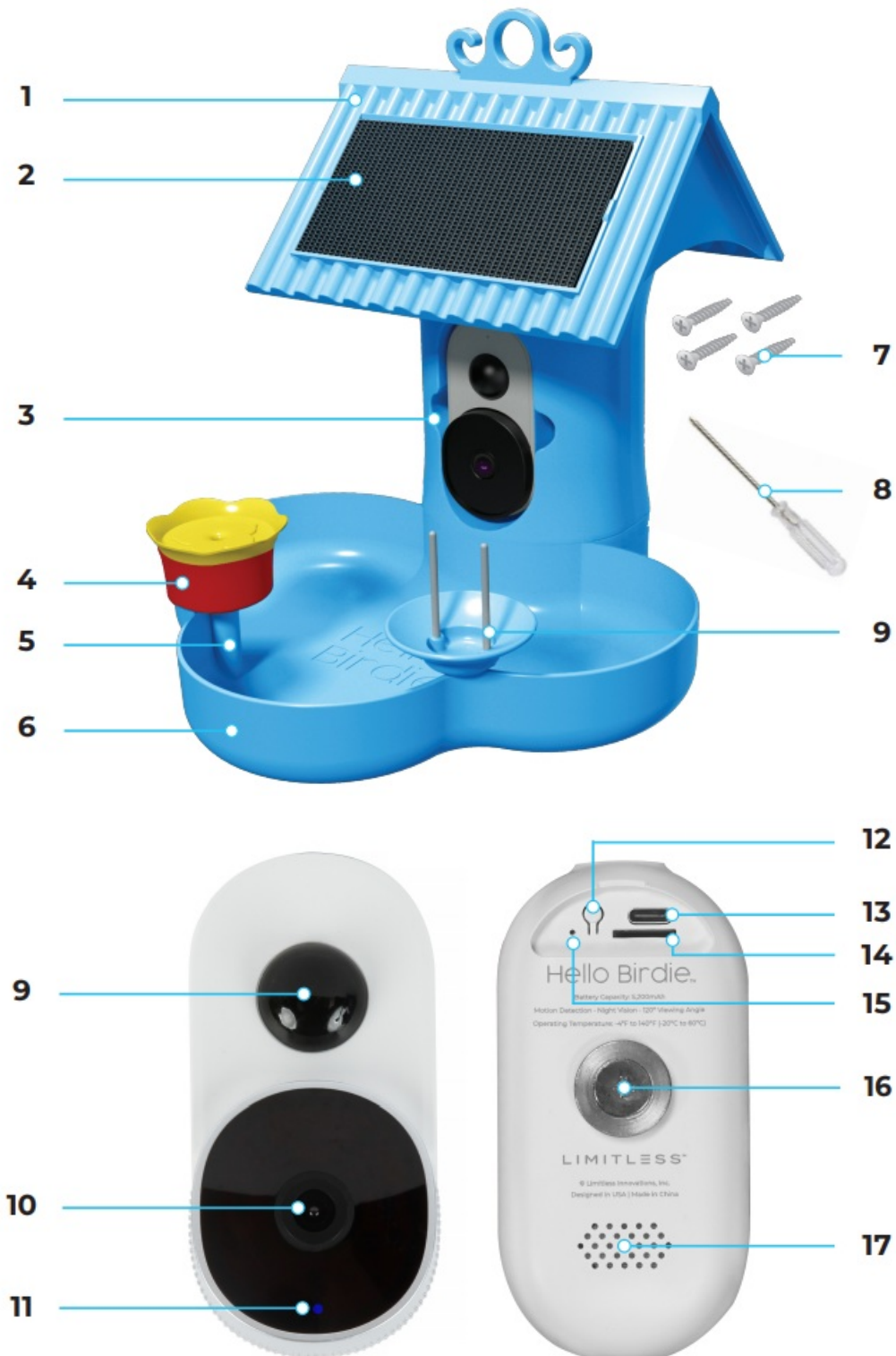
- IPCE: 19.5%
- Working Voltage (Vmp): 5V
- Working Current (Imp): 340MA
- Open Circuit Voltage (VOC): 6V
- Short-Circuit Current (ISC): 360MA
- Dimensions: 6.07" L x 3.07" W

• Camera

- Audio Format: G711A
- Motion Detection: Enabled
- Battery Life: Varies based on usage
- Battery Capacity: 5,200mAh
- Resolution: 1080p HD
- Viewing Angle: 120°
- Night Vision Range: 16 ft
- Wireless Connection: 2.4GHz WiFi
- Operating Temperature: -4°F to 140°F (-20°C to 60°C)
- Operating Humidity: 10%~80% (non-condensing)
- Charging Time (from 0%): 4.5 hours

- Charging Options: Solar Roof | Type-C Cable
- Dimensions: 4" L x 2" W

Components



• Bird Bath

- 1. Roof/Cover
- 2. Solar Panel
- 3. Camera Insert
- 4. Hummingbird Accessory

- 5. Accessory Adapter
- 6. Water Basin
- 7. Assembly Screws
- 8. Phillips Screwdriver
- 9. Fruit Skewer Attachment

- **Camera**

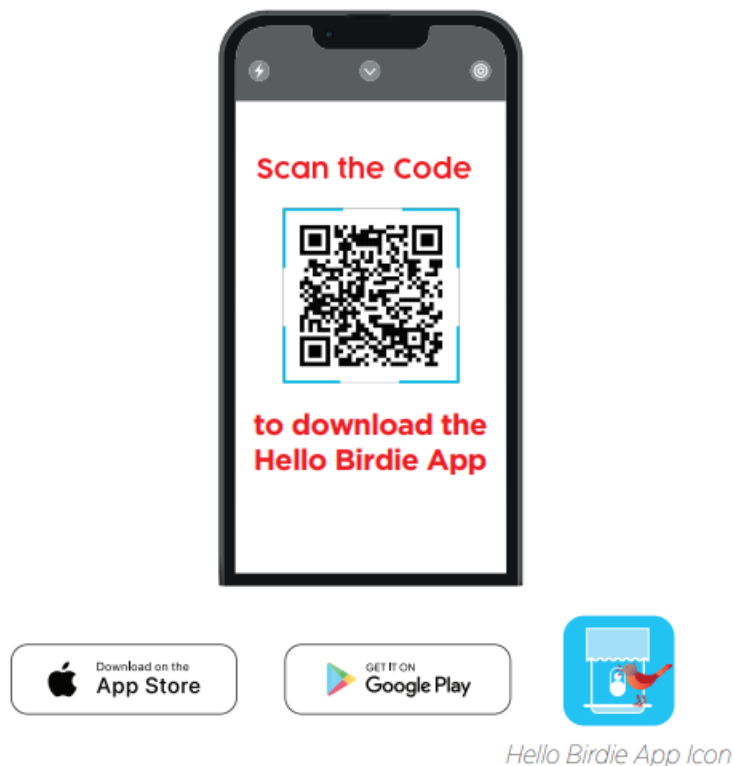
- 9. Motion Sensor
- 10. Camera Lens
- 11. Power Indicator Light (Blue)
- 12. Power Button
- 13. Type-C Charging Port
- 14. MicroSD Card Slot (MicroSD Not Included)
- 15. Reset Button Hole
- 16. Mounting Magnet
- 17. Speaker

Downloading the App

Scan the QR Code

Open the smartphone camera and hover over the QR code. When the camera recognizes the code, a prompt will appear to visit a link. Tap the prompt to be directed to the App Store and download the Hello Birdie App.

Note: Another option for downloading the app is to simply search for it in the App Store. Just type “Hello Birdie” into the search of the App Store, look for the app icon, and download the Hello Birdie App.

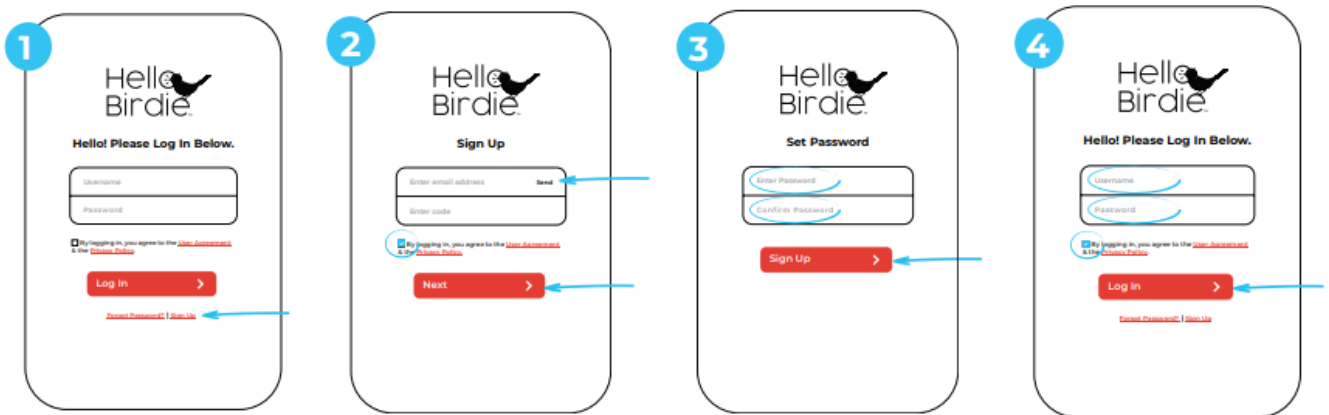


Using the App

Sign Up for an Account

The first step to getting started with the Hello Birdie App is to create a user account.

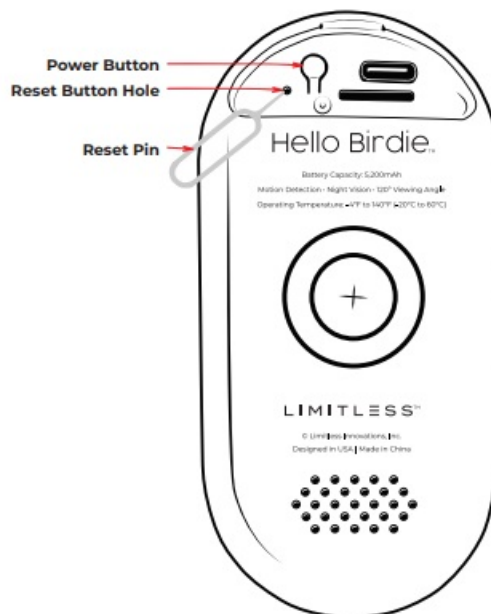
1. Open the newly downloaded Hello Birdie App. Tap Sign Up on the Log-In Screen.
2. Enter your preferred email address as the username, and then tap Send. Retrieve the code from that email address, and input it into the Enter Code field. Tap the checkbox after acknowledging the User Agreement & Privacy Policy, then tap Next.
3. Set a password, and complete the process by tapping Sign Up. Use the newly created credentials to log in and get started.



Setting up the Camera

Make sure you are connected to a 2.4GHz WiFi network. Once connected, follow the steps below to pair the Camera.

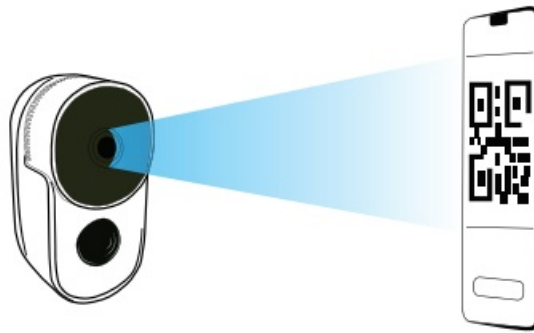
1. To add a Camera, tap the + button on the screen.



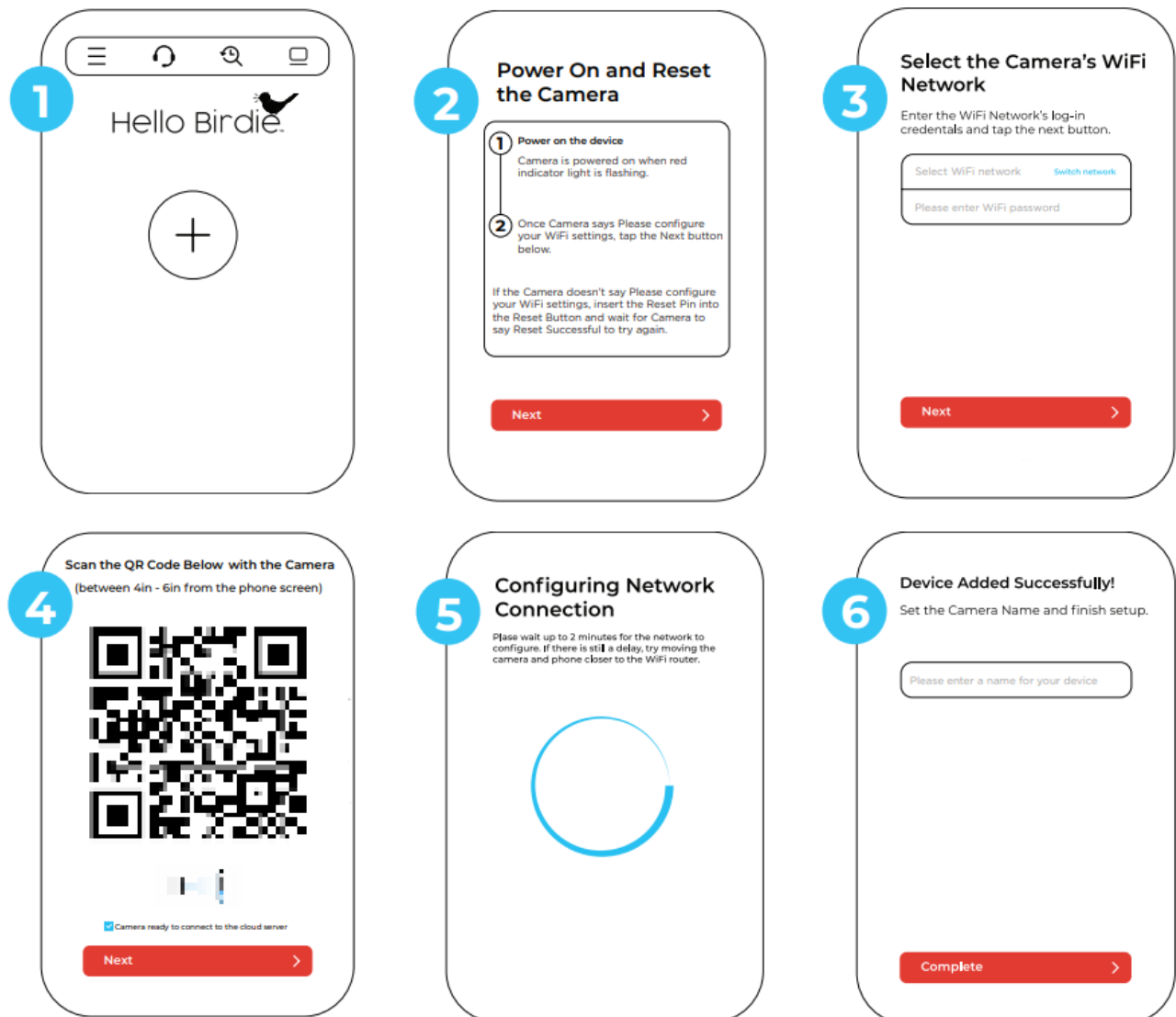
2. Power on the Camera. Listen to the voice prompts and wait for the red indicator light to flash. Insert the included Reset Pin into the Reset Button Hole of the Camera. Hold the Reset Pin in place until the Camera voice prompt says “reset successful, please wait for the camera to reboot.” Once the voice prompt says “Please configure your WiFi settings,” tap the Next button on the screen.

*If the light isn't on, press and hold the Power Button for 3-5 seconds until the light comes on.

3. Choose the correct WiFi network and add the WiFi password. Go to the next screen by tapping Next. Note* Make sure you are connected to a 2.4GHz WiFi network.
4. Use the Camera to scan the QR code provided on the screen. For best results, hold the Camera 4-6" away from the screen. Once the voice prompt says “Camera ready to connect to the cloud server,” the Camera is being connected. Go to the next screen by tapping Next.

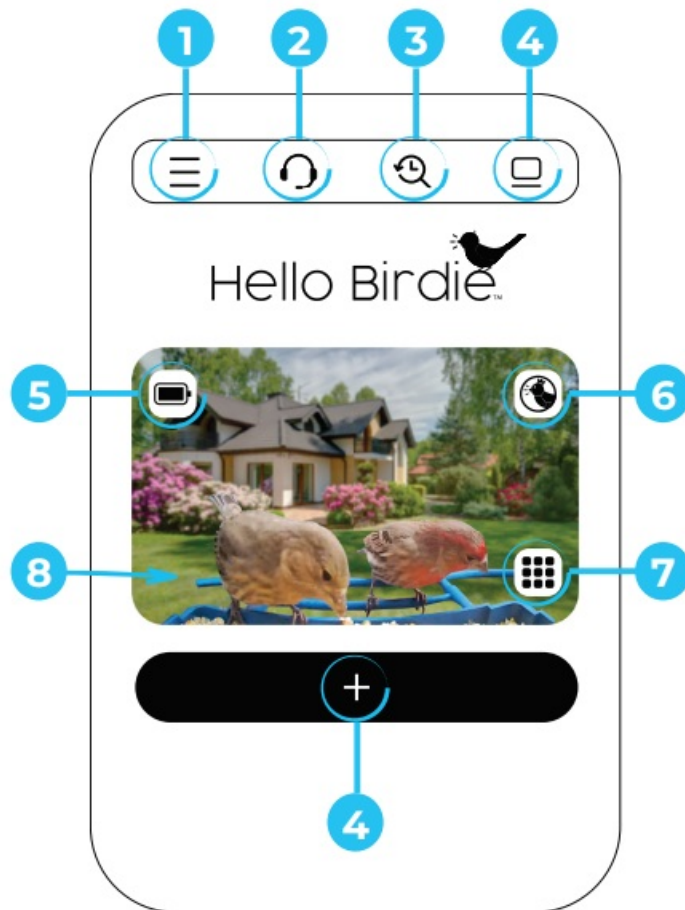


5. Wait up to 2 minutes while the connection is configured. If there is a delay, move the Camera and the phone closer to the WiFi router.
6. Once the Camera is added successfully, give it a name and tap Complete.
7. Start using
Hello Birdie



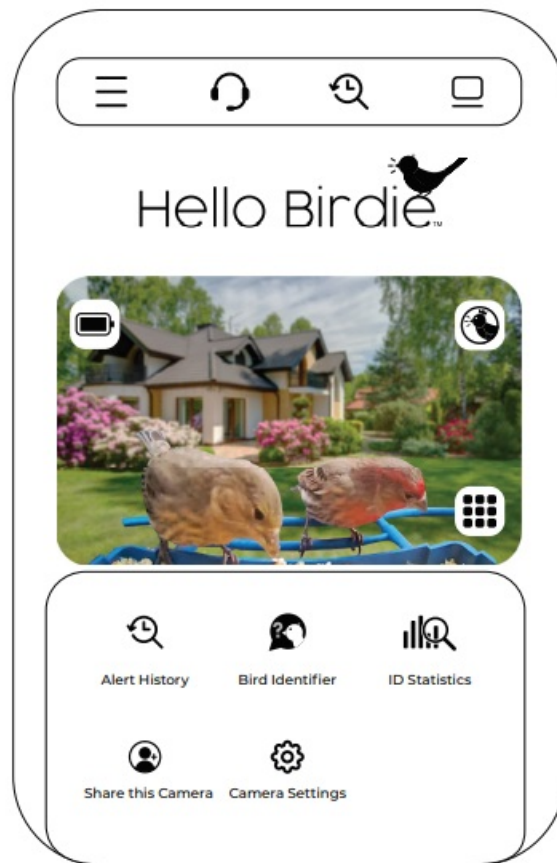
Learning the Features

- Home Screen

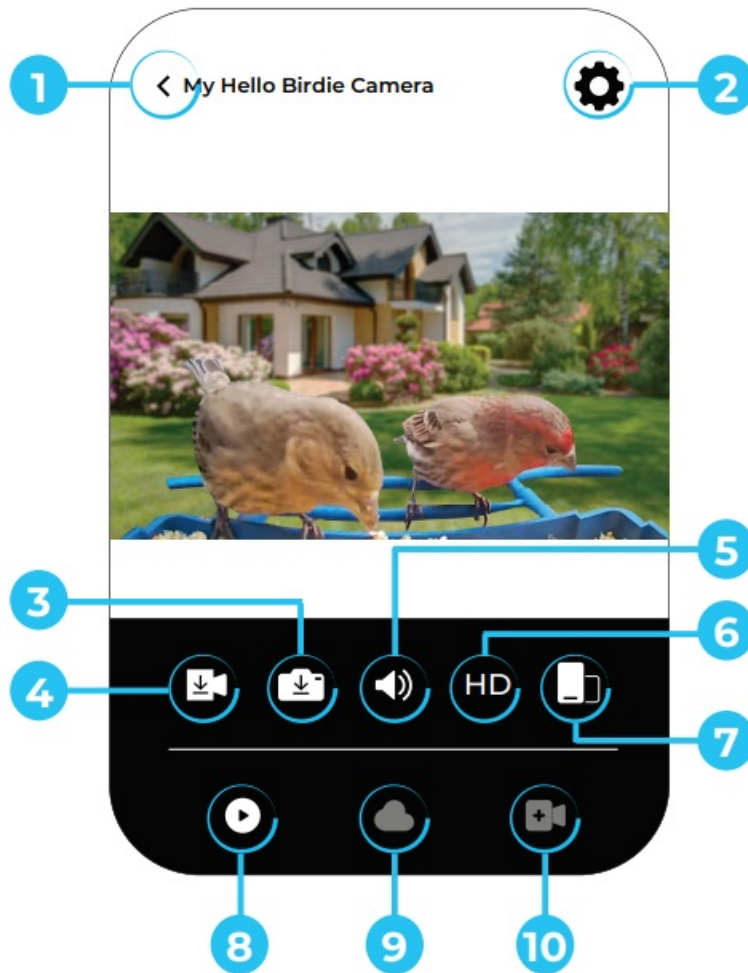


1. App Menu
2. Help & Support
3. Alert History
4. Add Camera
5. Camera Battery Life
6. Paid Plan Features
7. Camera Options
8. Tap the image on the screen to see the Live Camera Stream.

- **Camera Options**



- **Alert History** – Recount all alerts: Motion Detected, Bird Found, Bird Identified.
 - **Bird Identifier** – Upload pictures to identify birds
 - **ID Statistics** – See how many of a specific bird species has visited the Feeder.
 - **Share this Camera** – Add friends & family so they can watch along as well.
 - **Camera Settings** – Configure settings like notifications, image quality, and check the battery level.
- **Live Camera Stream**

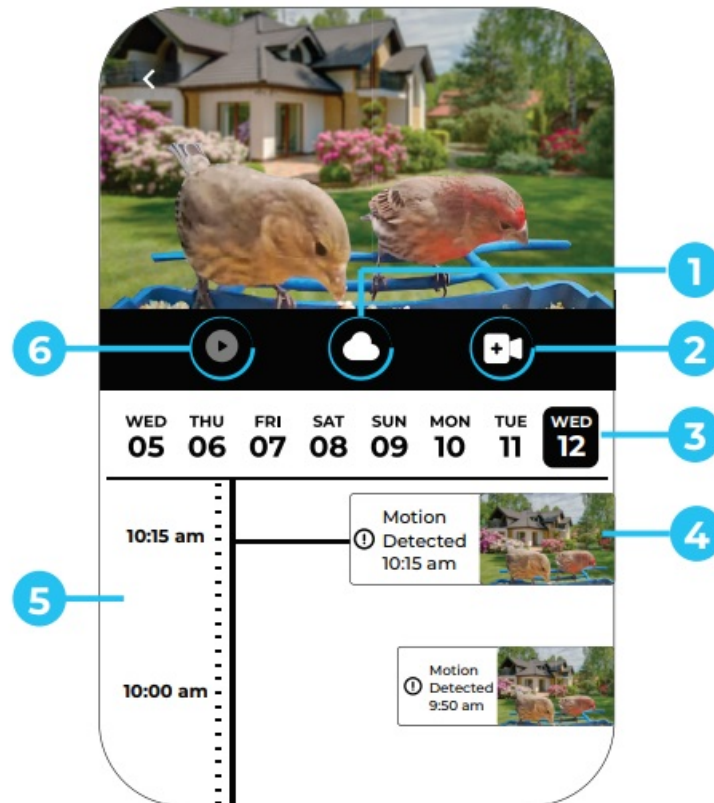


- Back to Home
- Camera Settings
- Download Image
- Download Video
- Sound On/Off
- Camera Quality
- Screen Orientation
- Live Camera Stream
- Cloud Timeline
- Stored Data Timeline

• **Live Camera Stream: Icon Definitions**

- **Back to Home** – Use this arrow to go back to the Home screen.
- **Camera Settings** – Configure settings like notifications, image quality, and membership options.
- **Download Image** – Press this button to download the current camera shot to the phone's photo gallery.
- **Download Video** – Press this button to start recording, and press again to stop recording. After it stops recording, the video will automatically download and save to the phone's photo gallery.
- **Sound On/Off** – Turn the Speaker off/on by tapping this icon.
- **Camera Quality** – Choose High or Ultra High Definition picture quality display.
- **Screen Orientation** – Switch between portrait and landscape view on the phone screen.
- **Live Camera Stream** – Shows what's going on at the Feeder in real time.
- **Cloud Timeline** – Shows the history of the data being stored on the cloud.
- **Stored Data Timeline** – Shows the history of the data being stored on the external MicroSD Card.

- **Timeline View**



1. Cloud Timeline
2. Stored Data Timeline
3. Day Selection
4. Detected Alert
5. Scroll the timeline
6. Back to Live Camera Stream

- **Timeline View: Icon Definitions**

- **Cloud Timeline** – Shows the history of the data being stored on the cloud.
- **Stored Data Timeline** – Shows the history of the data being stored on the external MicroSD Card.
- **Day Selection** – Selected day is highlighted and displays alerts for that day.
- **Detected Alert** – Displays all alerts detected by the camera: Motion Detected, Bird Detected, Bird Identified, and Predator Alert.
- **Scroll the Timeline** – Scroll up and down the timeline to view all of the alerts and their details.
- **Back to Live Camera Stream** – Shows the view of the camera in real-time.

Filling the Hummingbird Accessory

Mix 1 part refined white sugar with 4 parts water (for example, 1 cup of sugar with 4 cups of water) until the sugar is dissolved. Fill your Hummingbird Accessory with the sugar water and attach it to the Bird Bath. The nectar basin holds about 30ml of liquid. Extra sugar water can be stored in a refrigerator.

Note: Change the sugar water every other day and thoroughly clean the Hummingbird Accessory to prevent mold growth.

Note: Never use honey, corn syrup, raw unprocessed or powdered sugar.

Using the Fruit Skewer Accessory

Choose a variety of bird-safe fruits such as apples, pears, bananas, berries, and oranges. Make sure they are

fresh and free from any pesticides or harmful substances. Wash the fruits thoroughly to remove any dirt or residue. Cut them into bite-sized pieces, ensuring they are small enough for birds to handle but large enough not to fall off the skewer easily. Take the bird Fruit Skewer Accessory and insert the fruits onto the skewer one by one. Ensure that the fruits are tightly packed on the skewer to prevent them from slipping off. You can push them closer together to create a denser arrangement.

Installing the Bird Bath Accessories

• Installing the Accessories

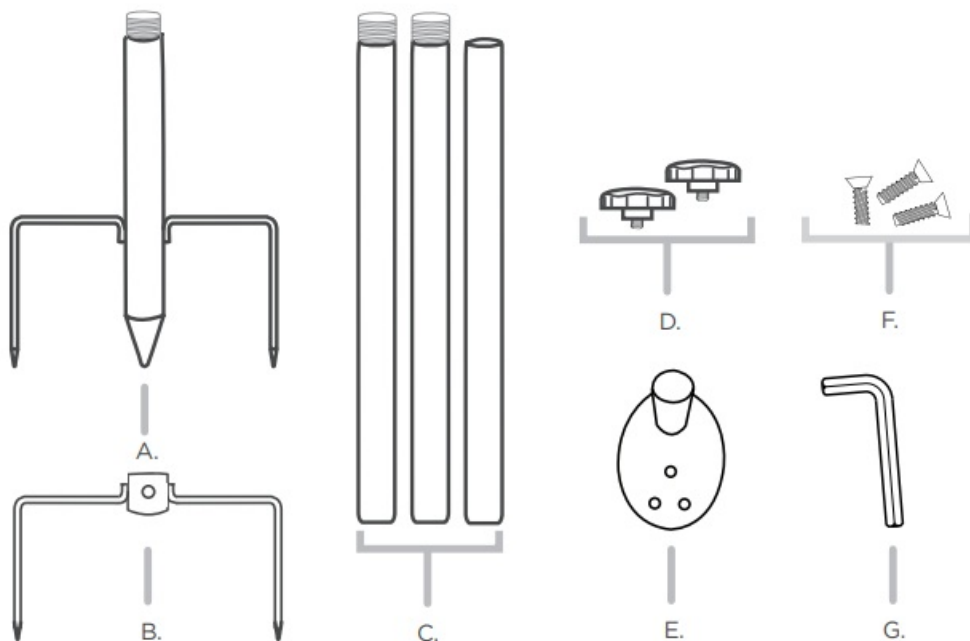
Attaching the Hummingbird and Fruit Skewer Accessory is simple! Just place the accessories on top of the built-in Accessory Adapters and slide them down. Push the accessories down until they securely press into place.

Note: If you own the original Hello Birdie Bird Feeder, the Suet Ball Accessory will also work with the Bird Bath.



Assembly Instructions

• Pole & Ground Stake



- **A.** (1) 11.82" 3-Prong Stake
- **B.** (1) Detachable Stabilizer Stake
- **C.** (3) 11.82" Pole Sections
- **D.** (2) Thumb Screws
- **E.** (1) Mounting Adapter
- **F.** (3) Adapter Screws

- **G.** (1) Allen Wrench

Attaching the Mounting Adapter to the Bird Bath



1. With the Bird Bath upside down, place the Mounting Adapter (E) with the flat surface directly on the Bird Bath so the three holes on the adapter align with the three threaded holes on the Bird Bath.
2. Use the (3) Adapter Screws (F) to attach the Mounting Adapter (E) to the Bird Bath with the Allen Wrench (G). DO NOT overtighten.
3. Once the Bird Bath is secured to the Adapter, proceed to the Pole & Ground Stake Assembly.

Pole & Ground Stake Assembly

1. Slide the Detachable Stabilizer Stake (B) onto the 3-Prong Stake (A), so it lays directly on top of the 3-Prong Stake (A).
2. Rotate the Stabilizer Stake (B) until the prongs of the 3-Prong Stake (A) and Stabilizer Stake (B) form a plus sign (+) when viewed from overhead.
3. Turn the Thumb Screw (D) clockwise to tighten and until the Detachable Stabilizer Stake (B) is secured and cannot rotate freely.
4. Add a Pole Section (C) to the 3-Prong Stake by connecting and turning clockwise to tighten. Add additional Pole Sections until the desired height is reached.



- (1) Pole Section: 11.82" total height
- (2) Pole Sections: 23.64" total height
- (3) Pole Sections: 35.46" total height

Attaching the Bird Bath to Pole & Ground Stake

1. Slide the Mounting Adapter (E) onto the end of the last Pole Sections (C) added.

2. Turn the Thumb Screw (D) clockwise to tighten and until the Mounting Adapter (E) is secure and cannot rotate freely.
3. Find the ideal spot in the yard and install. Make sure each of the four prongs are securely in the ground. Tip: It's recommended to install when the ground is soft.

Note: DO NOT step on the Prongs to install. Doing so may cause them to break.

Installing the Bird Bath

- **Optimal Placement**

- **Sun Exposure:** The Solar Panel powers the Camera, so it's important to set up the Bird Bath in a place with a good amount of sun.
- **WiFi Connection:** The smart features require a strong 2.4GHz WiFi connection, so test the placement to ensure the Bird Bath is within WiFi range.
- **Filling Your Bird Bath and Start Using the App:**
Fill the Water Basin with fresh water to the desired level. Refreshing the water routinely will help attract birds.

Charging the Camera

- **Solar Charging**

The Solar Panel roof is designed to provide extended battery life to the Hello Birdie Camera. As the Solar Panel gathers energy, the battery of the Camera will have a constant source of power. The charging cable is fixed into the back of the Camera Slot, and the Camera connects via a magnet to charge. This allows for easy Camera removal.

- **Traditional Charging**

There are times it may be necessary to charge the Camera away from the Feeder. Remove the Camera from the Bird Bath by pulling it out of the Camera Insert. To recharge, use the included Type-C Magnetic Charging Cable and any USB power source (i.e. a wall adapter, computer USB port, etc. – not included). Attach the magnetic end of the included cable to the Charging Magnet on the back of the Camera. The Camera will begin to charge.



Assembly & Cleaning

Assembling the Bird Bath



- **Step 1:** Insert the Body into the Water Basin.
- **Step 2:** Turn the Bird Bath over, and use the Phillips Screwdriver to attach (4) Assembly Screws to the Water Basin to the body.

Note: Do NOT over-tighten.



Cleaning the Bird Bath

To clean the Bird Bath, remove the camera. Simple soap and water will do the trick. Cleaning the Bird Bath every week will disrupt algae growth and prevent debris from accumulating. Keeping a clean Bird Bath will greatly increase the chances of birds visiting.

LIMITED WARRANTY

Your use of the product shall at all times require you to comply with all terms, conditions of use, instructions and recommendations set forth within this User Manual and the Limitless Terms and Conditions found at:

Warranty Terms and Conditions: [LimitlessInnovations.com/Warranty](https://limitlessinnovations.com/Warranty)

Are you having issues with your Limitless™ product?

We stand behind each product with a (1) Year Limited Warranty by Limitless Innovations.

Contact our support team today at:

<https://limitlessinnovations.onsitesupport.io/hellobirdie/>
Support@LimitlessInnovations.com
[855-843-4828](tel:855-843-4828)

Subject to the exclusions contained below, Limitless Innovations, Inc. ("Limitless") warrants the Limitless product to be free from defects in materials and workmanship under normal consumer usage for a period of one (1) year from the date of original purchase, (the "Limited Warranty"). As utilized herein, the term "Hello Birdie™" (or the singular, Limitless product) shall include all products set forth above in the What's Included section of this User Manual that may be sold by Limitless now or in the future.

This Limited Warranty is a consumer's sole and exclusive remedy regarding any express warranty claim by a consumer and is subject to the exclusions on the following pages:

Exclusions: The Limited Warranty shall not apply in the event of the occurrence of any of the following:

- 1. Normal Wear and Tear.** The Limited Warranty shall not apply to cover the maintenance, repair and/or replacement of parts or the Limitless products due to normal wear and tear by the consumer.
- 2. Abuse and Misuse.** The Limited Warranty shall not cover defects or damage that result in whole or in part from: (a) improper operation, storage, misuse or abuse, accident or neglect by the consumer (including, without limitation, physical damage, cracks and scratches to the surface of the Limitless product; (b) contact with liquid, water, rain, extreme humidity or heavy perspiration, sand, dirt or the like, extreme heat, or food; (c) use of the Limitless product for commercial purposes; (d) subjecting the Limitless product to abnormal usage or conditions; and/or (e) other acts which are not the sole and absolute fault of the Limitless product.
- 3. Unauthorized Service or Modification.** The Limited Warranty shall not cover defects or damages resulting in whole or in part from service, testing, adjustment, installation, maintenance, alteration, or modification in any way by someone other than Limitless or its authorized service centers.
- 4. Altered Products.** The Limited Warranty shall not cover defects or damages to a Limitless product with (a) serial numbers or date tags that have, at any time, been removed, altered, or obliterated; (b) broken seals or that show evidence of tampering; (c) mismatched board serial numbers; or (d) non-conforming or non-Limitless housings, or components.
- 5. Communication Services.** Defects, damage, or failure of the Limitless products due to any communication service or signal you may subscribe to or use with the Limitless product or software.

WHO IS COVERED?

This warranty extends only to the first consumer purchaser and is not transferable to any third party nor applicable

to any subsequent owner other than the first consumer purchaser.

WHAT WILL LIMITLESS DO?

If Limitless determines, in its sole and absolute discretion, that a claim is subject to the Limited Warranty, it will, at its sole option, repair or replace the Limitless product or it will, in its discretion, refund the purchase price of any Limitless products or software.

WHO DO I CONTACT TO MAKE A CLAIM?

In the event of any warranty claim under the Limited Warranty, you can contact the telephone number below or provide a written correspondence to the address below at which time and in response thereto, you will receive instructions on how to ship any Limitless product at your expense, to a Limitless authorized repair center.

To obtain service, you must include: (a) a copy of your receipt, bill of sale or other comparable proof of purchase; (b) a written description of the problem; (c) the name of your service provider, if applicable; and (d) your mailing address, email address and telephone number.

Please call [855-843-4828](tel:855-843-4828) first to obtain RMA#)

Limitless Innovations, Inc.

4800 Metalmaster Way

McHenry, IL 60050

WHAT OTHER LIMITATIONS ARE THERE?

Any warranty claim shall be limited to the Limitless cost of material on the Limitless Product determined to have a manufacturer's defect. In no event shall Limitless be liable to any party for any labor costs or any other direct, indirect, consequential, incidental or special damages, whether in contract or tort and Limitless expressly disclaims liability for any damages of any kind arising under any theory of law whatsoever. The performance of the Limitless Product depends on the purchaser's adherence to manufacturer product instructions and Limitless will not be responsible to the purchaser for any deviations therefrom. Some states do not allow the exclusion or limitation of incidental or consequential damages, so the above limitation or exclusion regarding incidental or consequential damages may not apply to you. All implied warranties, including, without limitation, the implied warranty of merchantability and the implied warranty of fitness for a particular purpose shall expire on date of first purchase of the Limitless Product by the consumer. Some states do not allow limitations on how long an implied warranty lasts, so the above limitation may not apply to you. With respect to that period of time beyond the Limitless 1 Year Limited Warranty period, Limitless disclaims and further makes no warranty of any kind, express or implied, including but not limited to, any warranty of merchantability or warranty of fitness for a particular purpose.

Please note this Limited Warranty gives you specific legal rights, and you may also have other rights that vary from state to state.

NATIONAL STATUTORY RIGHTS

Consumers in some jurisdictions may have legal rights under applicable national legislation governing the scale of consumer goods, including without limitation, national laws implementing EC Directive 99/44. These rights are not affected by the warranties in this limited warranty.

For the full Warranty, Terms, and Conditions, please visit: LimitlessInnovations.com/Warranty

COPYRIGHT NOTICE

All rights reserved. Limitless™, Hello Birdie™, and Limitless Hello Birdie™ are trademarks of Limitless Innovations, Inc. Design and specifications subject to change without notice. Products may vary from images shown. Electronic devices not included. All other trademarks included herein are the property of their respective owners. Refer to your device's user manual for technical specification compatibility.

All Limitless products and information shared in this manual are protected by copyright. Copying, reproducing, reverse engineering or distributing any information of Limitless-related product hardware or software without a formal and written authorization and license from Limitless Innovations, Inc. is prohibited and may result in legal action to the full extent of the law.

HelloBirdieApp.com

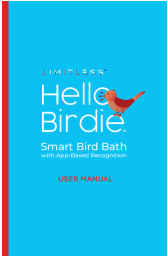
LimitlessInnovations.com

Support@LimitlessInnovations.com




[855-843-4828](tel:855-843-4828)

Limitless Innovations, Inc.
4800 Metalmaster Way
McHenry, IL 60050
© Limitless Innovations, Inc.
Designed in USA. Made in China.
@hellobirdie
@limitless.hellobirdie
@limitlessinnovations

Documents / Resources

	<p>HelloBirdie LIM-BRDB-XXX Smart Bird Bath with App Based Recognition [pdf] User Manual</p> <p>LIM-BRDB-XXX Smart Bird Bath with App Based Recognition, LIM-BRDB-XXX, Smart Bird Bath with App Based Recognition, App Based Recognition, Based Recognition, Recognition</p>
---	--

References

-  [Hello Birdie](#)
-  [Warranty/Terms & Conditions– Limitless Innovations](#)
-  [Hello Birdie](#)
- [User Manual](#)

[Manuals+](#), [Privacy Policy](#)

This website is an independent publication and is neither affiliated with nor endorsed by any of the trademark owners. The "Bluetooth®" word mark and logos are registered trademarks owned by Bluetooth SIG, Inc. The "Wi-Fi®" word mark and logos are registered trademarks owned by the Wi-Fi Alliance. Any use of these marks on this website does not imply any affiliation with or endorsement.