



HeimVision HMD2 Battery Powered Camera User Manual

[Home](#) » [HeimVision](#) » HeimVision HMD2 Battery Powered Camera User Manual 

Contents

- [1 HeimVision HMD2 Battery Powered Camera](#)
- [2 SAFETY CAUTIONS](#)
- [3 PRODUCT OVERVIEW](#)
- [4 CONNECTING YOUR CAMERA TO A MOBILE DEVICE](#)
- [5 Connecting by Scanning the QR Code](#)
- [6 Connecting by AP Hotspot](#)
- [7 FUNCTION OVERVIEW](#)
- [8 BATTERY](#)
- [9 TROUBLESHOOTING GUIDE](#)
- [10 SPECIFICATIONS](#)
- [11 EU Declaration of Conformity](#)
- [12 Documents / Resources](#)
 - [12.1 References](#)
- [13 Related Posts](#)



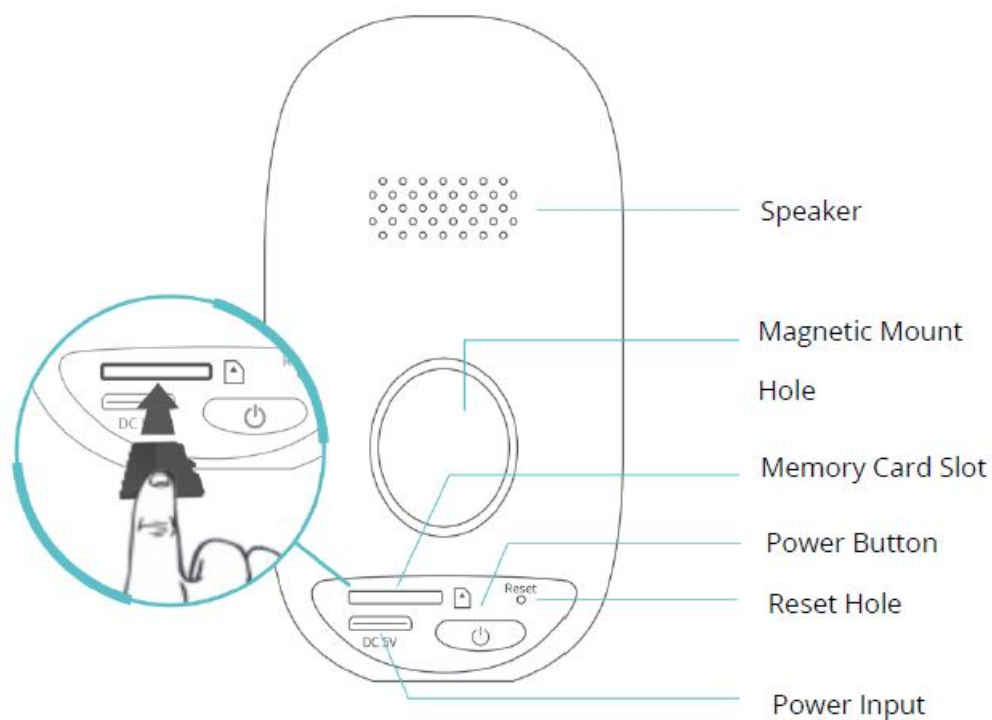
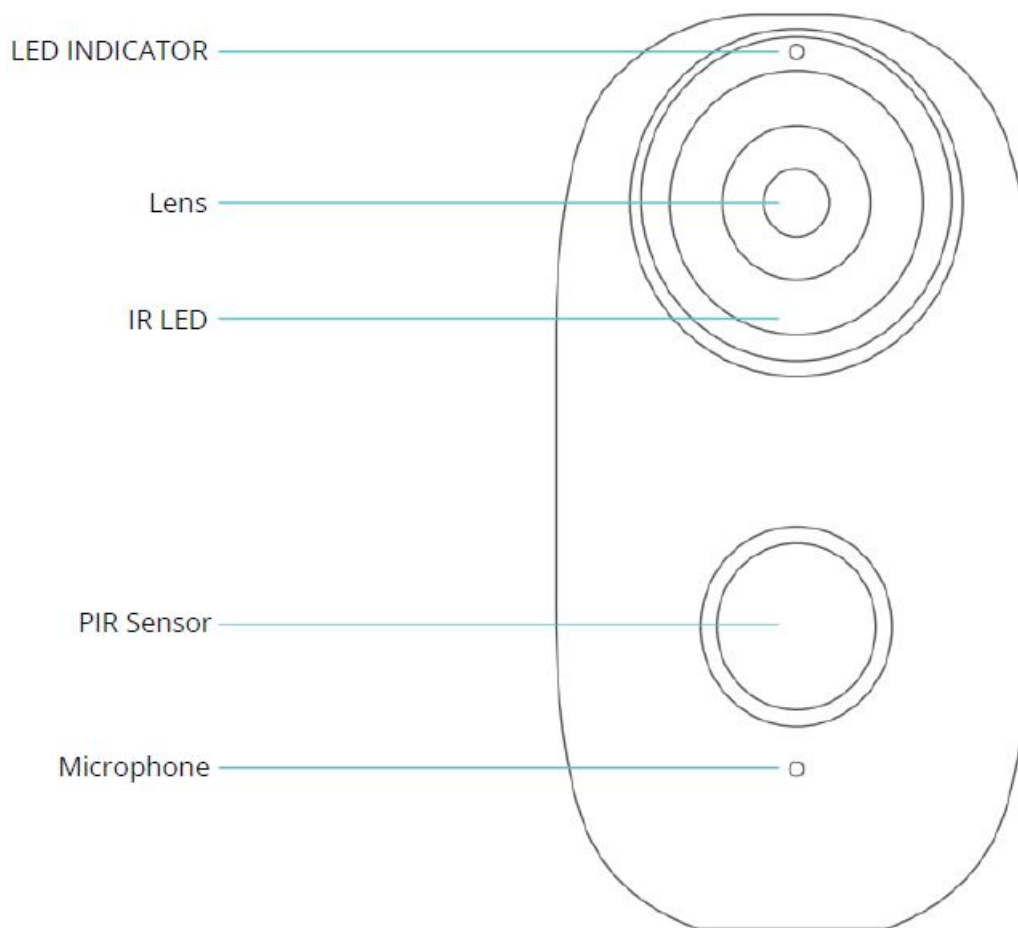
HeimVision HMD2 Battery Powered Camera



SAFETY CAUTIONS

- For security, please use the original accessories provided.
- Do not replace the batteries without the official guidance.
- Please obey the local security regulations and policies when installing the products.
- We assume no liability or responsibility for any fires or electrical shock caused by improper installation.

PRODUCT OVERVIEW



CONNECTING YOUR CAMERA TO A MOBILE DEVICE

App Downloading and Installation

Option 1:

Search for HeimLife from App Store™/Google Play™, then download and install it on your mobile device.

Option 2:

Scan the QR codes below to download and install.



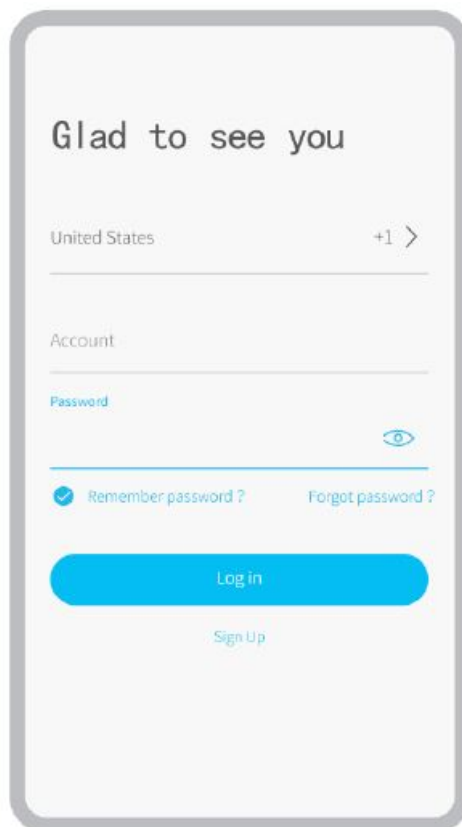
iOS



Android

Account Registration and Login

Launch HeimLife App, register an account with a valid email address at the first use of HeimLife App, then log in.



- Please select the correct country code when signing up and logging in.
- For a successful connection, please allow HeimLife App to use your WLAN & Cellular Data when running it.
- Please turn on the location service on your mobile device and allow Heimlife App to access your location.

Connecting the Camera to the HeimLife App

- Make sure the power of your camera is enough. You could use a 5V output power adapter (not included) to charge it.
- The camera can only support a 2.4GHz Wifi.
- Avoid using special characters or symbols in your Wifi name and password, such as @~!#\$%^&* and so on.
- Ensure the camera and your mobile device are close to the router when connecting.
- Press and hold the Power Button for 5 seconds to power on the camera, the LED Indicator will be solid red during the startup process. Then it will change to flash red slowly, which indicates the camera is ready to

connect to Wifi.

- Insert the Reset Pin into the Reset hole and press for 5 second to reset the camera if the connection failed or you need to connect the camera with another HeimLife account.

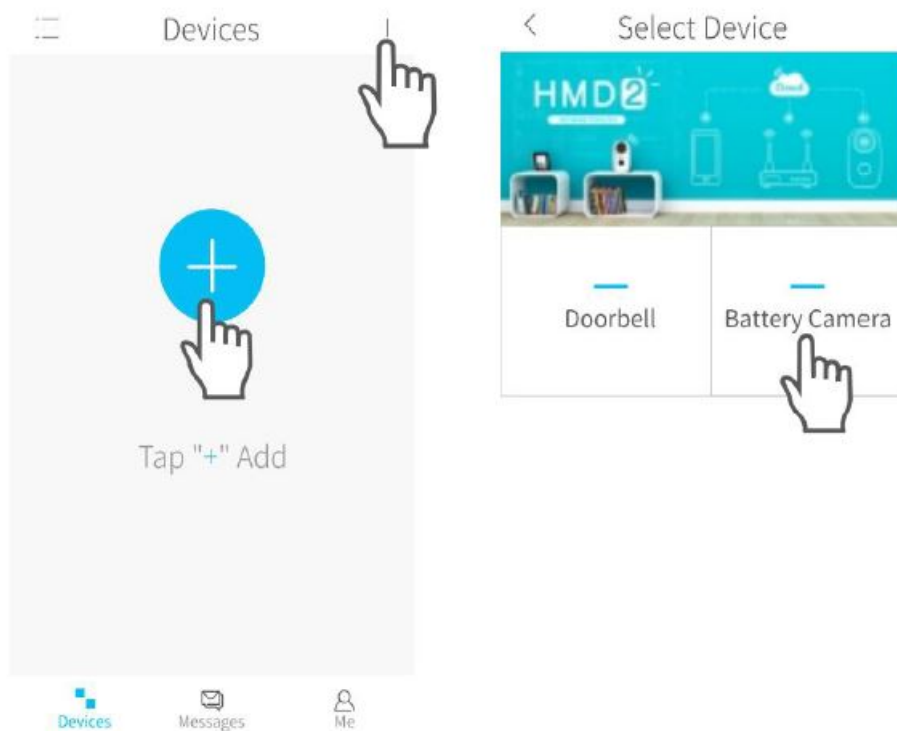
There is a beeping sound from the camera after a successful reset.

The explanations of LED Indicator:

LED Status	Camera Status
Flash Red Slowly	Ready for Wifi Connection
Flash Red Quickly	Connecting to Wifi
Solid Blue	Wifi connected
Solid Red	Network abnormal

Connecting by Scanning the QR Code

Log in to HeimLife App, tap and Battery Camera.



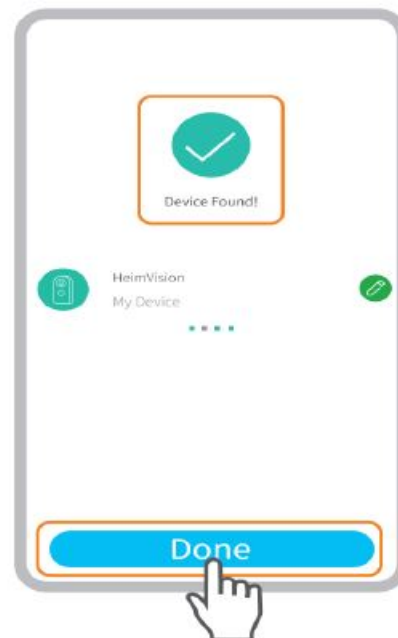
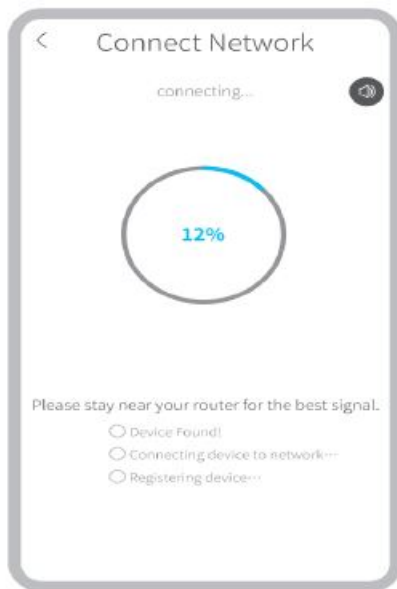
Start to connect the camera.



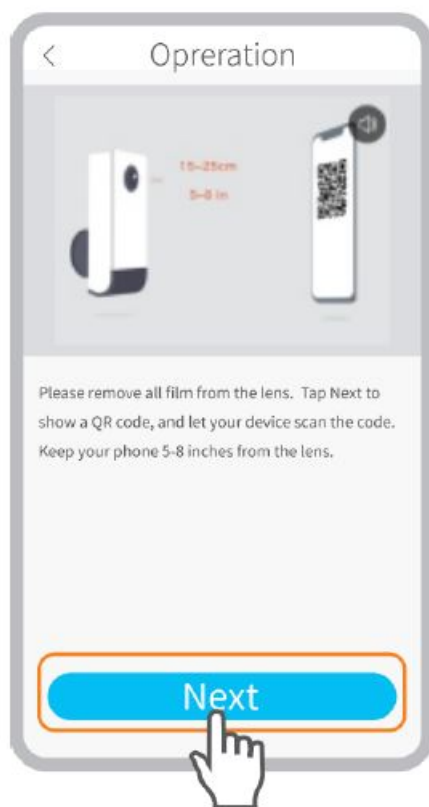
Make sure the LED indicator flashes RED slowly.



Align the QR code on your mobile device with the lens of the camera and keep a distance of 5-8 inches.

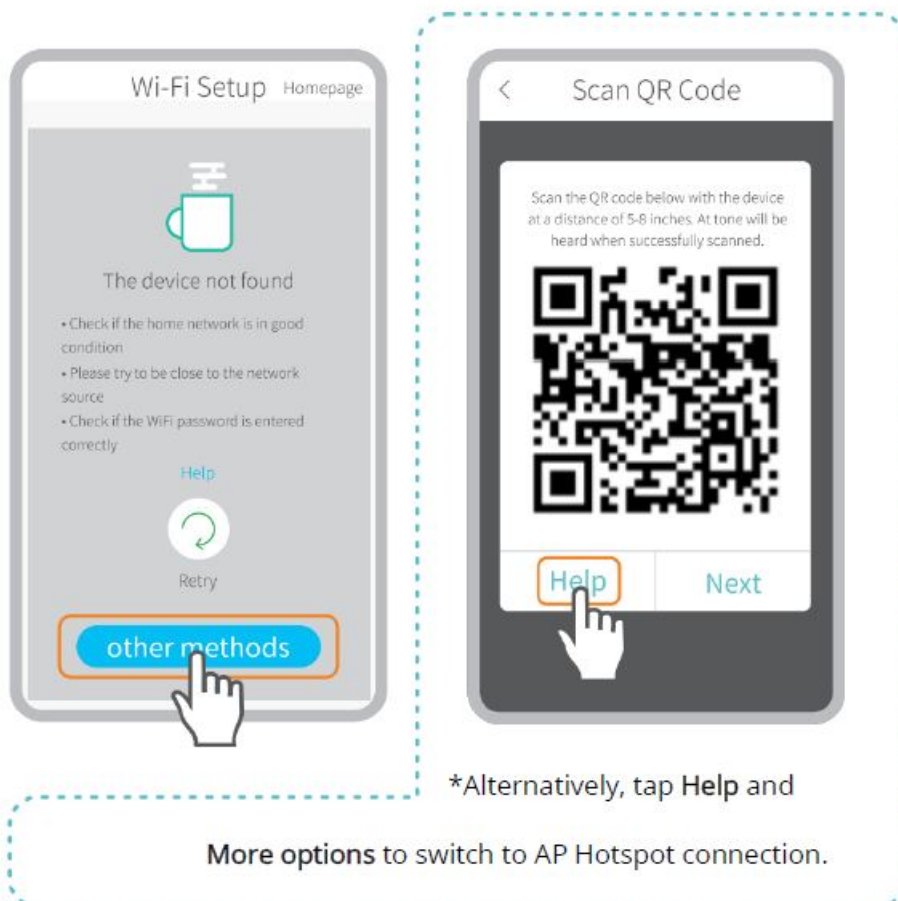


Wait for connection after scanning. Device Found stands for a successful connection, then tap Done to start the experience.

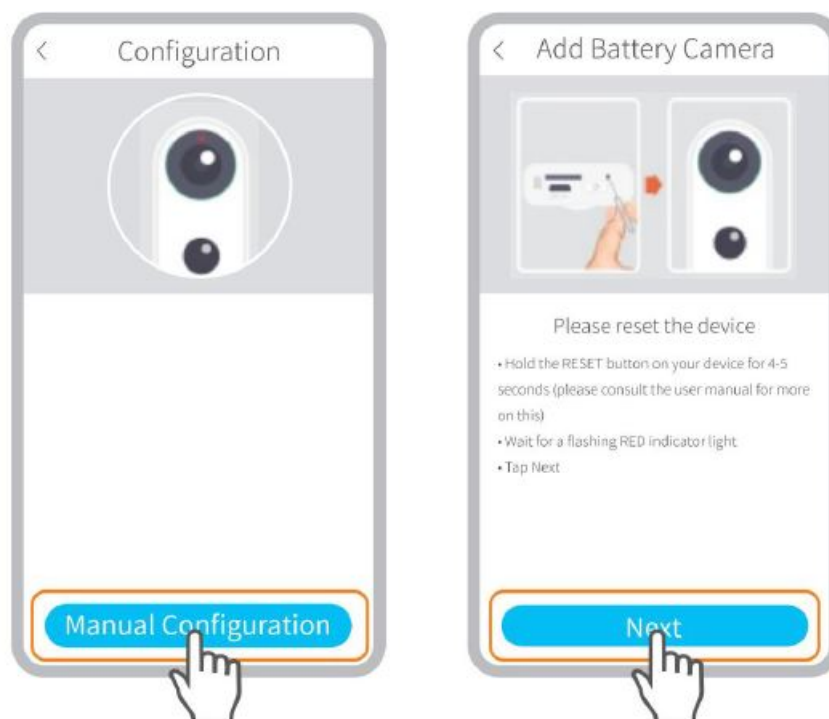


Connecting by AP Hotspot

If the camera can't be connected by scanning the QR code, a prompt of The device not found will be displayed on the interface of Wifi Setup. Please tap other methods to connect the camera by AP Hotspot.



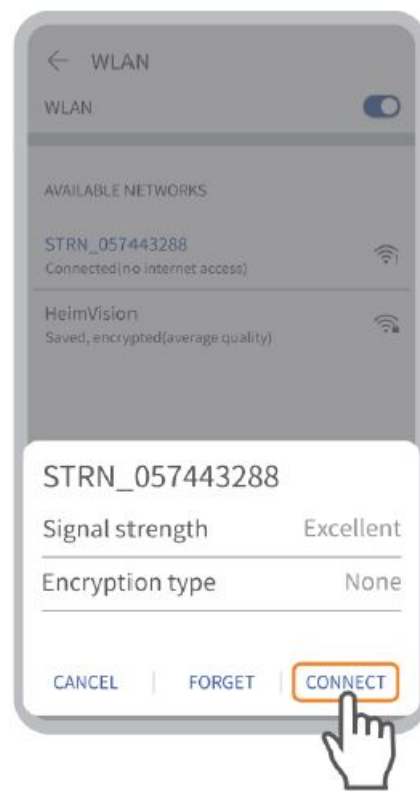
More options to switch to AP Hotspot connection.



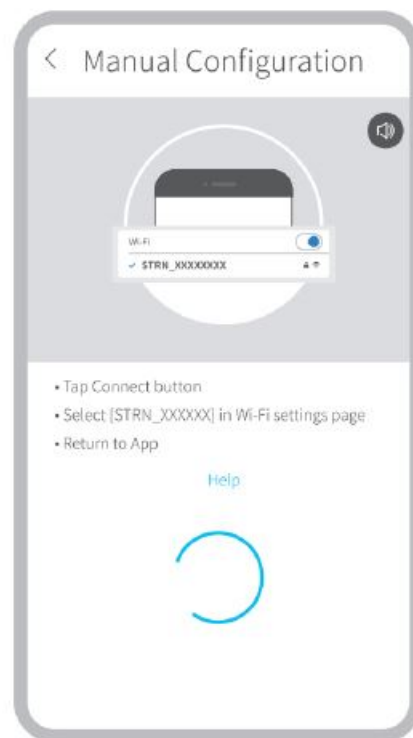
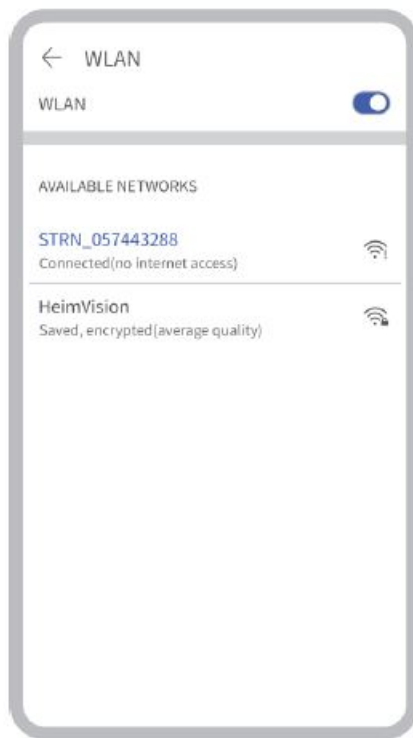
Make sure the LED indicator flashes RED slowly.



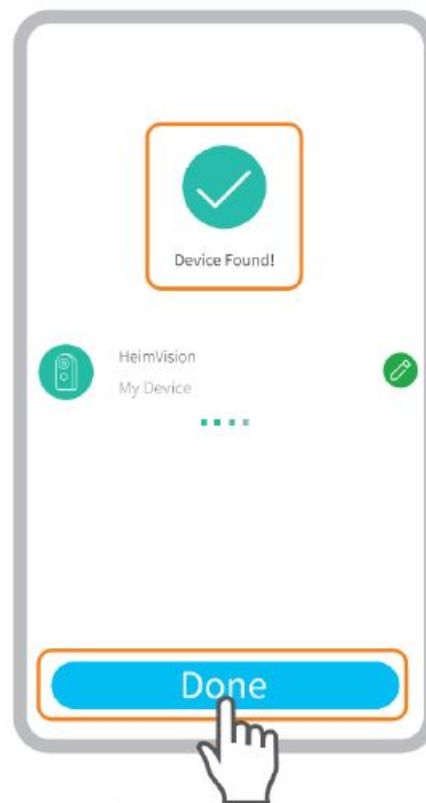
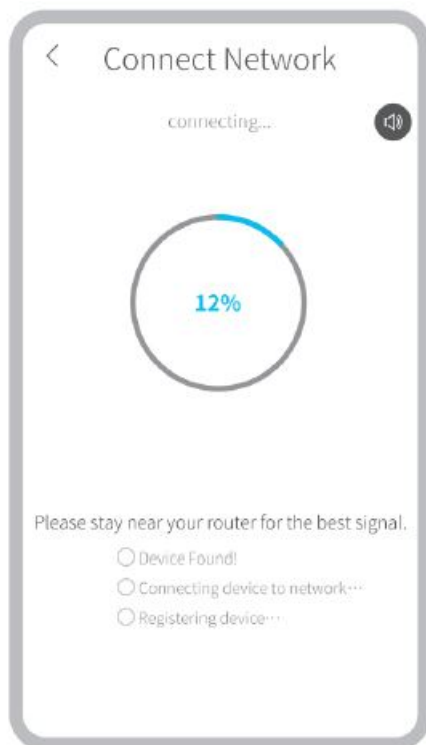
Tap Connect to enter the Wifi settings of your mobile device, then connect to the Wifi of STRN_XXXXXX.



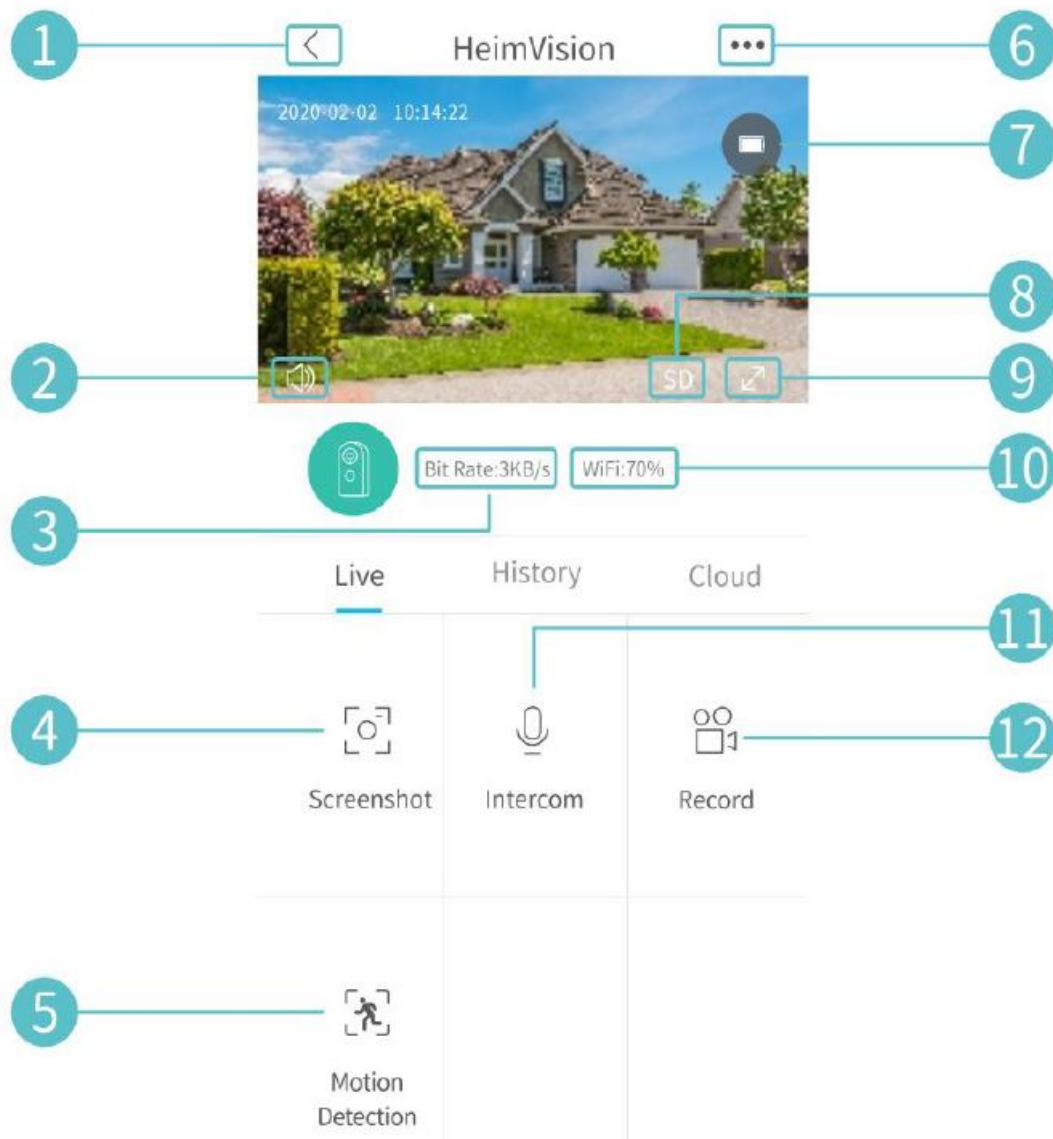
After the Wifi of STRN_XXXXXX is connected, please get back to HeimLife App to start connecting the camera.



Device Found stands for a successful connection, then tap Done to start the experience.



FUNCTION OVERVIEW

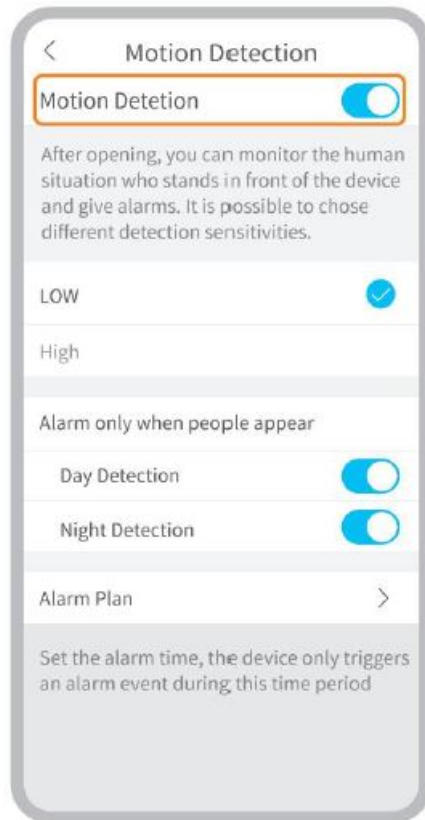


1. Back to the main interface.
2. Turn on/off the live audio from the camera.
3. Real-time bit rate of the live video.
4. Tap to capture a photo and save to Me > Picture & Videos.
5. Motion Detection on/off.
6. Detailed Settings.
7. Battery status of the camera. If the battery icon shows red, please charge the camera timely.
8. Toggle between SD and HD; SD is recommended for smoother streaming.
9. Full screen.
10. Wifi Signal: If it is less than 70%, please check your network and keep the camera and your router closer.
11. Tap and hold to talk with people near the camera.
12. Tap to start recording the live video; tap again to end and save it to Me > Picture & Videos.

Video Recording

This camera only starts to record videos when the PIR sensor detects motions caused by people or animals as the Motion Detection is enabled by default. It's not designed for 7/24 all day recording.

For more detailed settings about the Motion Detection, please go to Detection Alarm > Motion Detection.



- Setting the sensitivity level of Motion Detection to Low can decrease unnecessary notifications of being disturbed and reduce false alarm.
- Enabling Alarm only when people appear, the camera will only record videos and send push notifications when it detects motions caused by people.
- Making an Alarm Plan can avoid being disturbed frequently as the camera will detect motions according to schedules.

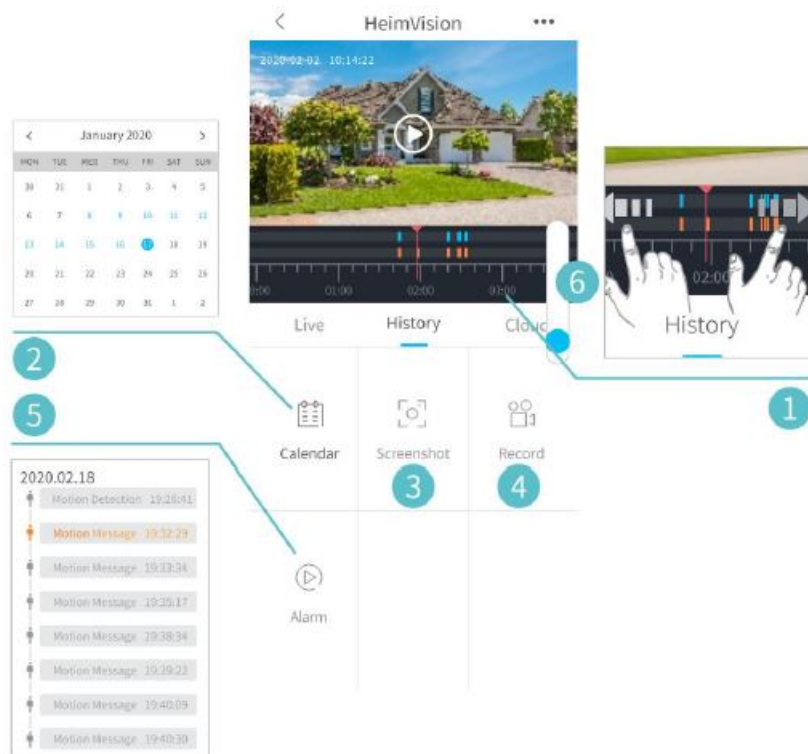
Tips:

- If you disable the motion detection, the camera will not record videos.
- If no memory card installed or no cloud plan subscribed to, the camera will not record any video and you can only watch the live video.

Video Playback

Video Playback in Memory Card

Tap History to play the videos recorded in the memory card if you've installed a memory card.



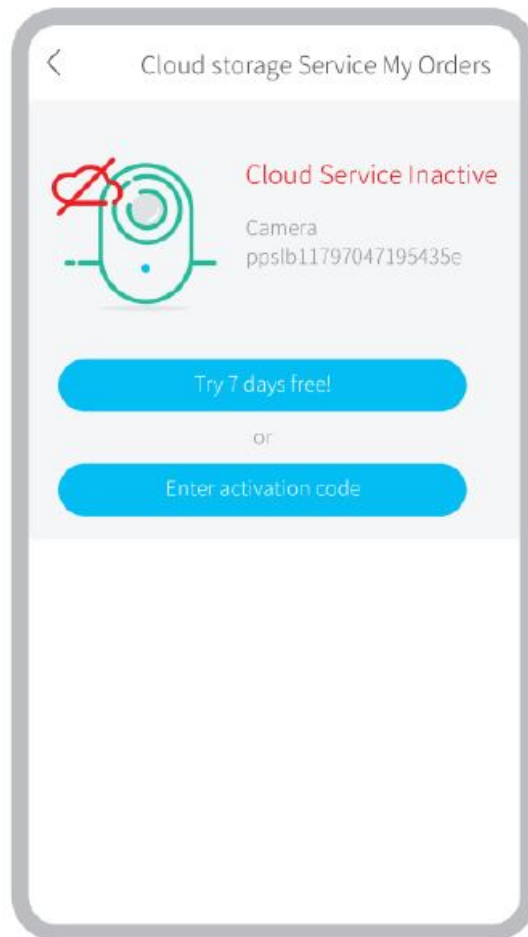
1. Timeline: Slide leftward or rightward to check the videos. Blue bars stand for the videos recorded when the camera detects motions cause by people or animals, while red bars stand for the moments when the event occurred to wake up the camera to start recording.
2. Tap the date with blue background to play the video recorded on that day.
3. Screenshot: Slide to the blue bar, then tap to capture a photo and save to Me > Picture & Videos.
4. Record: Slide to the blue bar, then tap to start recording a video; tap again to end and save it to Me > Picture & Videos.
5. Alarm: Check the moments when the motion detection is triggered.
6. Timeline zoom in/out.

Video Playback in Cloud

Tap Cloud to play the videos recorded on the encrypted cloud if you've subscribed to a cloud plan.

Tip:

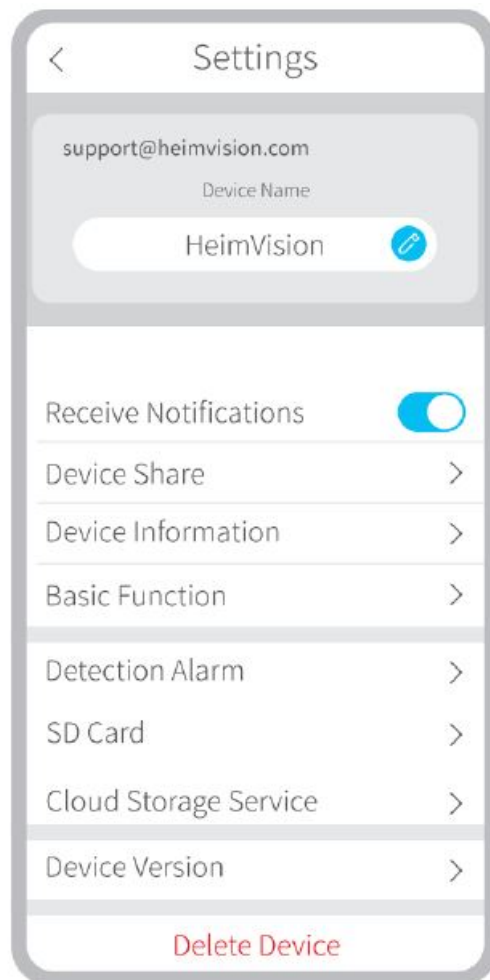
If you need subscribe to a cloud plan, please go to Main Interface > or Settings > Cloud Storage Service. You can also renew, change the cloud plan or enter the activation code here.



If you have installed a memory card and subscribed to a cloud plan, the videos will be recorded in the memory card and cloud at the same time.

Settings

Tap to access the detailed settings for the camera.

**Device name:**

Tap to edit the name of your camera.

Receive Notifications:

Turn it on and allow HeimLife App to send push notifications to your mobile device.

Device Share:

Share your device with friends or family.

Basic Function:

- Turn on/off the night vision of the camera or set it to Automatic which means the camera will enable the night vision when it detects low-level ambient light. The image will be black and white then.
- Adjust the volume of camera's speaker.
- Check the remaining power of your camera.

Detection Alarm:

Enable/disable Motion Detection, adjust the detection sensitivity, and set schedules to enable motion detection.

Memory Card:

Set the video length of each recording (only available for memory card), check the remaining capacity of the memory card or format it.

BATTERY

This battery powered camera utilizes an advanced low power technology. If there are no motions detected, the camera will enter sleep mode. With a full charge, the camera may work for around 4 months if the camera is woken up/detects the movement of human body for 10 times per day and works 20s per time.

Tips:

- If the camera is woken up frequently or detects the movements of human body for many times, the power of the camera will be consumed quickly. Charging the camera regularly is recommended.
- The battery in the camera can be changed for 500 times. If we charge the camera once a week, the life span of the battery can extend more than 9 years.
- The recommended operating temperature of the camera is 14°F~122°F (-10°C~50°C). Battery performance may drop at low temperatures. At -4°F (-20°C), the battery may drain in short time, or even may not charge. It will work normally as the temperature rises.

TROUBLESHOOTING GUIDE

Q1: Do I need to always connect my mobile device to any wifi if I'd like to watch the videos ?

No, you don't . You can use WLAN or Cellular Data to watch them only if your camera is well connected to your router's wifi.

Q2: What will happen when the memory card runs out of space ?

The oldest footage will be overwritten by the latest one. Please back up the important videos timely or delete the unnecessary videos to release more space. Alternatively, you can subscribe to a cloud plan.

How many cameras can I connect to the same account ?

You can add many as you can, but we recommend 10 cameras at most for better experience.

SPECIFICATIONS

- Operation Frequency 2412.MHz-2472HMz
- Max. RF output power 17.87dBm

Warranty Conditions

A new product purchased in the Alza.cz sales network is guaranteed for 2 years. If you need repair or other services during the warranty period, contact the product seller directly, you must provide the original proof of purchase with the date of purchase. The following are considered to be a conflict with the warranty conditions, for which the claimed claim may not be recognized:

- Using the product for any purpose other than that for which the product is intended or failing to follow the instructions for maintenance, operation and service of the product.
- Damage to the product by a natural disaster, the intervention of an unauthorized person or mechanically through the fault of the buyer (e.g. during transport, cleaning by inappropriate means, etc.).
- Natural wear and aging of consumables or components during use (such as batteries, etc.).
- Exposure to adverse external influences, such as sunlight and other radiation or electromagnetic fields, fluid intrusion, object intrusion, mains overvoltage, electrostatic discharge voltage (including lightning), faulty supply or input voltage and inappropriate polarity of this voltage, chemical processes such as used power supplies, etc.
- If anyone has made modifications, modifications, alterations to the design or adaptation to change or extend the functions of the product compared to the purchased design or use of non-original components.

EU Declaration of Conformity

Identification data of the manufacturer's / importer's authorized representative:

Importer: Alza.cz a.s.Registered office: Jankovcova 1522/53, Holešovice, 170 00 Prague 7 IČO: 27082440

Subject of the declaration:

Title: Battery Powered Camera Model / Type: HMD2

The above product has been tested in accordance with the standard(s) used to demonstrate compliance with the essential requirements laid down in the Directive(s):

Directive No. 2014/53/EU Directive No. 2011/65/EU as amended 2015/863/EU Prague, 27.1 2021

WEEE

This product must not be disposed of as normal household waste in accordance with the EU Directive on Waste Electrical and Electronic Equipment (WEEE – 2012/19 / EU). Instead, it shall be returned to the place of purchase or handed over to a public collection point for the recyclable waste. By ensuring this product is disposed of correctly, you will help prevent potential negative consequences for the environment and human health, which could otherwise be caused by inappropriate waste handling of this product. Contact your local authority or the nearest collection point for further details. Improper disposal of this type of waste may result in fines in accordance with national regulations.

Dear customer,


Thank you for purchasing our product. Please read the following instructions carefully before first use and keep this user manual for future reference. Pay particular attention to the safety instructions. If you have any questions or comments about the device, please contact the customer line.

www.alza.co.uk/kontakt

+44 (0)203 514 4411

Alza.cz a.s., Jankovcova 1522/53, Holešovice, 170 00 Praha 7, www.alza.cz

Documents / Resources

 <p>Battery Powered Camera HMD2</p> <p><small>User Manual • Uživatelský manuál • Uživatelský manuál • Benutzeranweisung • Benutzeranweisung</small></p>	<p>HeimVision HMD2 Battery Powered Camera [pdf] User Manual HMD2, Battery Powered Camera</p>
--	--

References

- 🐛 Alza.sk – rýchly a pohodlný nákup odkiaľkoľvek | alza.sk
- 🐛 alza.at
- 🐛 alza.co.uk
- 🐛 alza.de
- 🐛 alza.hu
- 🐛 alza.sk