



HeimVision HMA2 Smart Wi-Fi Camera User Manual

[Home](#) » [HeimVision](#) » HeimVision HMA2 Smart Wi-Fi Camera User Manual 

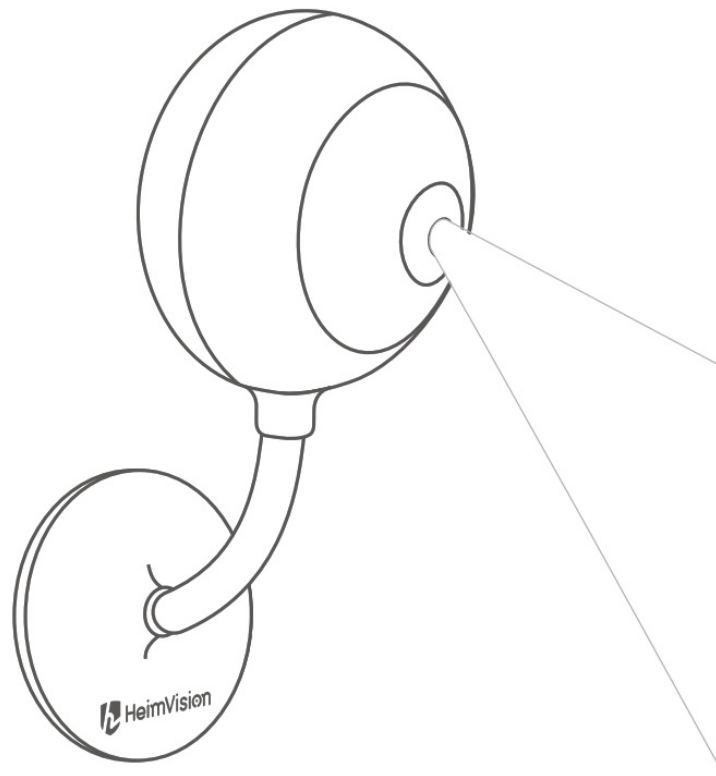


Smart Wi-Fi Camera User Manual

Contents

- [1 HMA2 Smart Wi-Fi Camera](#)
- [2 PACKING LIST](#)
- [3 PRODUCT OVERVIEW](#)
- [4 CONNECT THE CAMERA TO A MOBILE DEVICE](#)
- [5 Account Registration and Login](#)
- [6 Connect the Camera to HeimLink Account](#)
- [7 USE THE CAMERA ON A MOBILE DEVICE](#)
- [8 Video Recording](#)
- [9 Video Playback](#)
- [10 Alarms and Notifications](#)
- [11 Device Sharing](#)
- [12 Cloud Service](#)
- [13 More Settings](#)
- [14 USE THE CAMERA ON COMPUTER](#)
- [15 TROUBLESHOOTING](#)
- [16 SPECIFICATIONS](#)
- [17 FCC Caution](#)
- [18 ISEDC Warning](#)
- [19 Documents / Resources](#)
- [20 Related Posts](#)

HMA2 Smart Wi-Fi Camera



Please read this manual carefully before using this product and keep it well for future use. pp

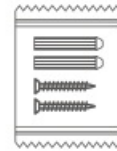
PACKING LIST



Smart Wifi Camera



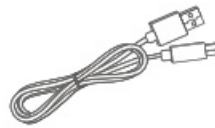
Camera Mount



Screw Kit



Power Adapter



USB Cable

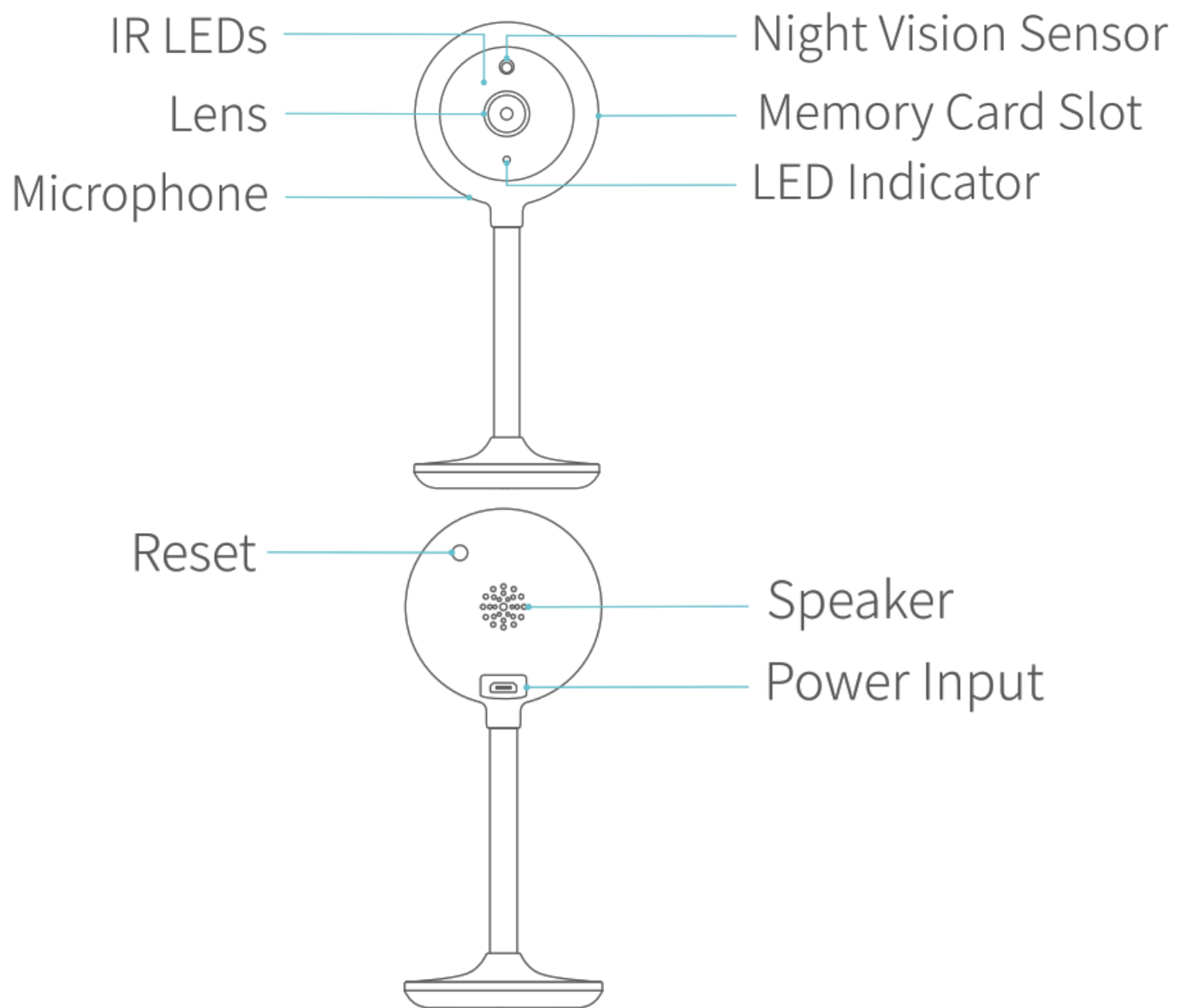


3M Adhesive Pad



User Manual

PRODUCT OVERVIEW



CONNECT THE CAMERA TO A MOBILE DEVICE

App Downloading and Installation

Search for HeimLink from App Store/Google Piaci, or scan the QR codes below to download and install the App on your mobile device.



For iOS

<https://qrs.ly/tlb91fx>



For Android

<https://qrs.ly/66b91fs>

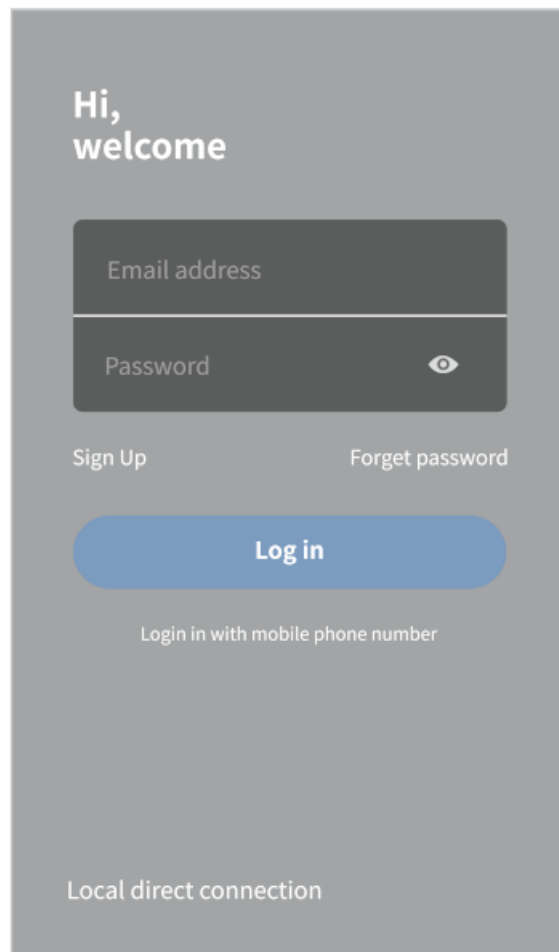


Note:

Google Play™ is a trademark of Google Inc., and App Store is a trademark of Apple Inc.

Account Registration and Login

Please register an account with a valid email address, then log in.




Connect the Camera to HeimLink Account

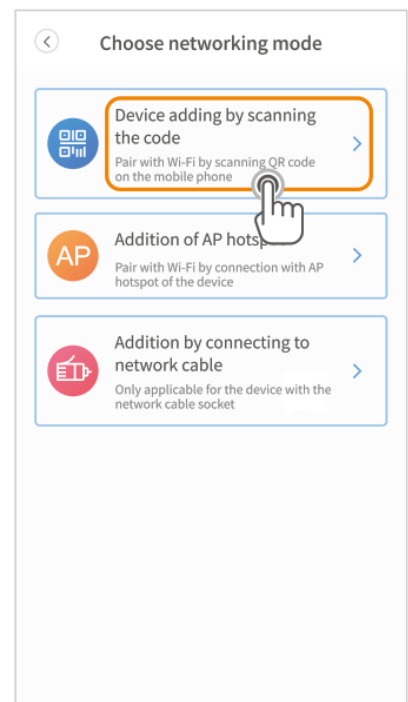
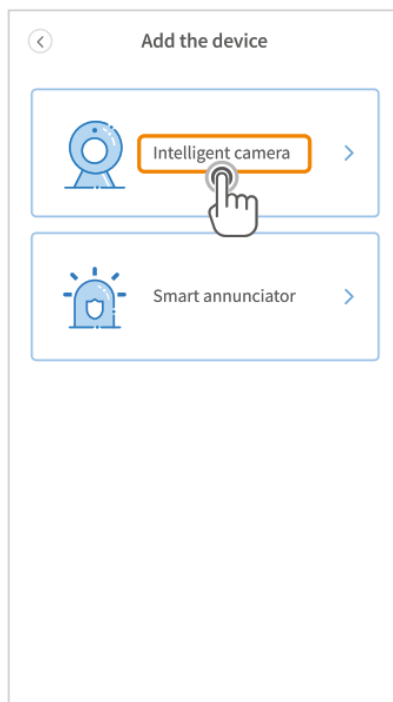
IMPORTANT:

1. This camera only supports a 2.4GHz Wifi.
2. For a stable network connection, please make sure the camera and the mobile device are close to the router.
3. Avoid using special characters or symbols in your Wifi name and password, such as @-!#\$%^&* and so on.
4. For all connecting options, you will hear the voice prompts after the camera is powered on. Press and hold the Reset button for 5-6s to reset the camera if no voice prompts are heard. You will hear “Reset success” at a successful reset.
5. Please turn on the location service and Wifi on your mobile device, then allow HeimLink App to access your location and use Wifi.

1. Connect the camera by scanning the QR code

Power on the camera, and wait until you hear “Please configure camera by AP hotspot or scanning code”.

1. Tap  in the center or upper right corner.
2. Select Intelligent camera.
3. Select Device adding by scanning the code.
4. Tap Next.
5. Connect to your router’s Wifi and tap Next.



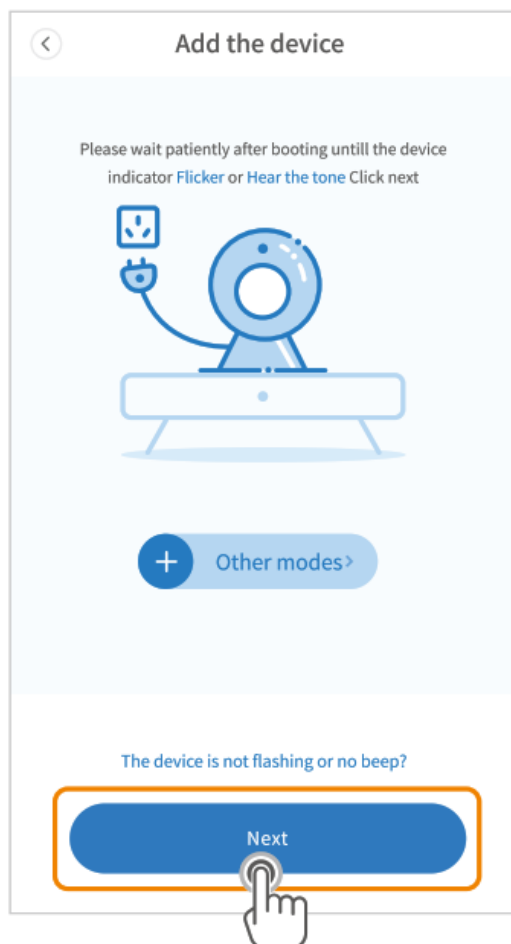
1



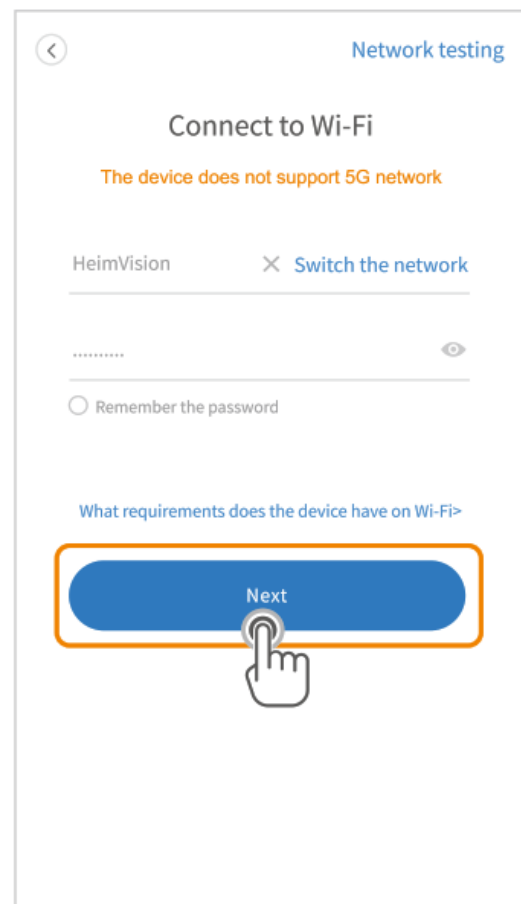
2



3



4

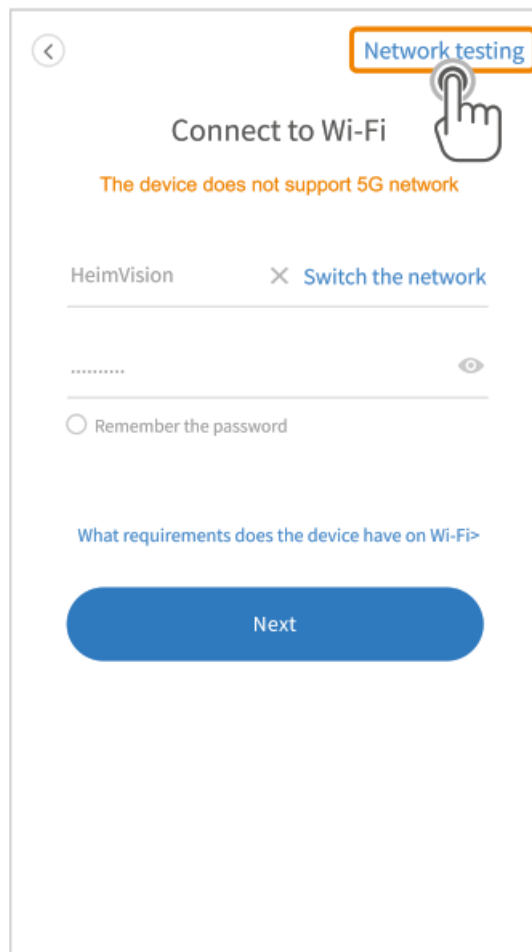


5

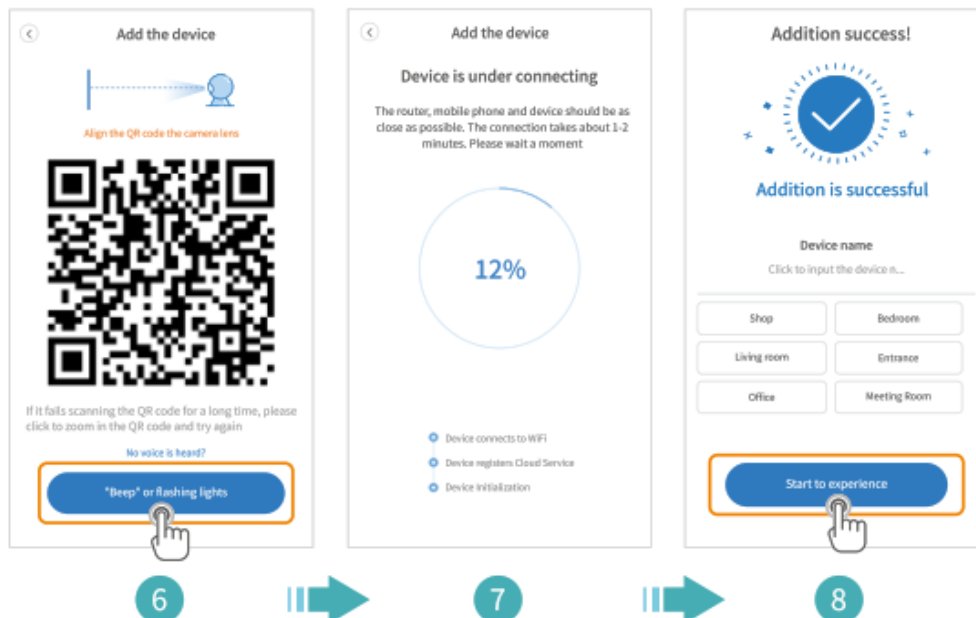


Tip:

Tap Network testing to check your Wifi status.



6. Align the QR code on your mobile device with the camera lens and keep a distance of 4-8 inches. Tap “Beep” or flashing lights after you hear two beeps from the camera.
7. Wait for the connection.
8. Name your camera and tap Start to experience to finish the connection.



2. Connect the camera by AP hotspot

Power on the camera, and wait until you hear “Please configure camera by AP hotspot or scanning code”.

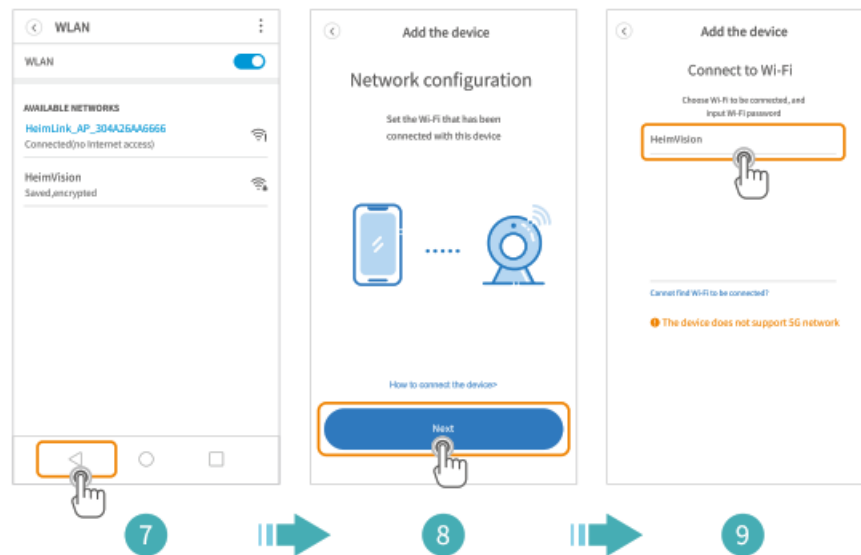
 **Note:**

No password is required for the wifi HeimLink_AP_xxxx. If your mobile device prompts you that the Wifi is unsecure, please ignore it.

1. Tap 0 in the center or upper right corner.
2. Select Intelligent camera.
3. Select Addition of AP hotspot.
4. Tap Next.
5. Tap Go to Setting.
6. Connect to the Wifi HeimLink_AP_xxxx.

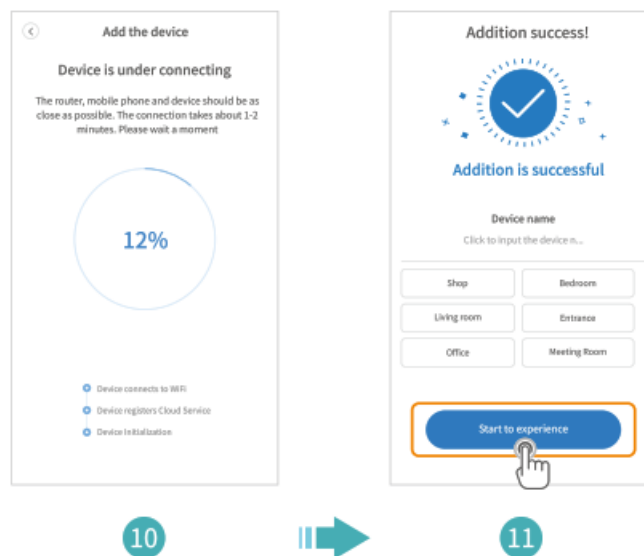


7. Go back to the interface of network configuration.
8. Tap Next.
9. Select your router's Wifi and enter the correct password.



10. Wait for the connection.

11. Name your camera and tap Start to experience to finish the connection.



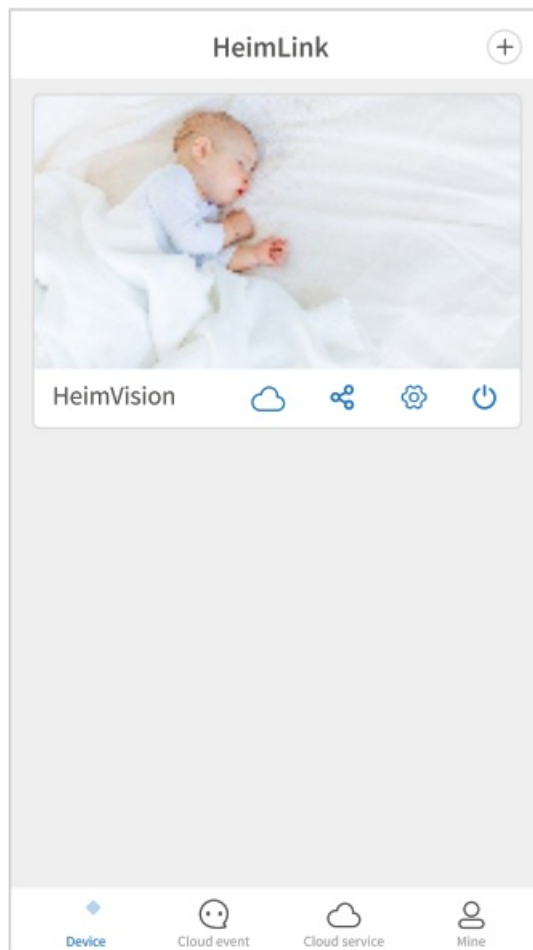
Tip: There will be a pop-up window of connection instruction if you didn't connect to the Wifi HeimLink_APicxxx successfully. Tap Confirm and connect to the Wifi again.

USE THE CAMERA ON A MOBILE DEVICE

Function Overview

1.Main Interface

Device: Swipe down on the Device interface of HeimLink to refresh the camera's purview.



subscribe to or renew a cloud plan.



: share your camera with your family (see more on Page 17).



: enter the interface of Setting.



: turn on/off the camera.

Cloud event:

Only available when a cloud plan is subscribed to. Tap to check the videos recorded on the cloud when motion/sound is detected. Tap on a video to play it, then tap Save to save it to the Cloud album as needed.

Cloud service:

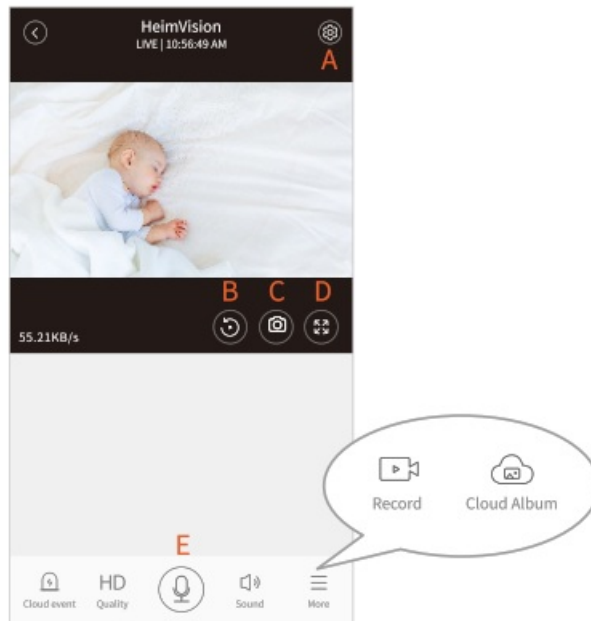
Check your device's cloud service.

Mine:


Tap My Album to check the snapshots/videos saved on the Local album and the videos saved on the Cloud album. Check the version of the App.


2. Live Video


Tap the preview image on the main interface of HeimLink to check the live video.




- A. Setting
- B. Playback
- C. Snapshot
- D. Full Screen
- E. Hold to Talk


 : play the recorded videos.

 : capture a picture to the local album in App.


 : check the videos recorded to the cloud when sound/motion is detected.

HD: toggle the image quality between HD and SD. SD is recommended for smoother streaming.

 : Press and hold to talk to people in front of the camera.

 : tap it and you won't hear the sound from the camera.

 : show more functions.

 : record a video to the local album in App.

 : check the videos saved to the cloud.

 **Tip:**

Tap  to enter the cloud album, tap on a video, or tap  on the upper right corner and select a video, then you can download, share, rename, or delete it.

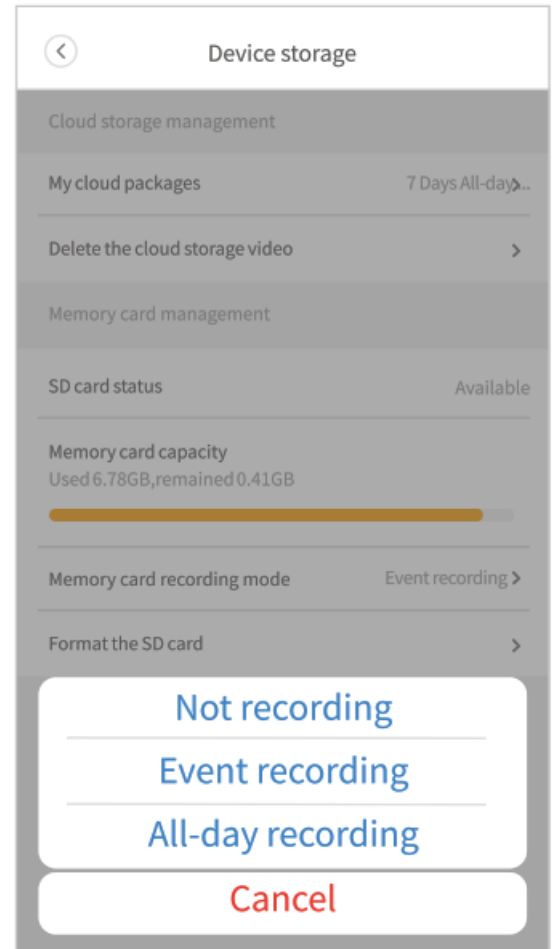
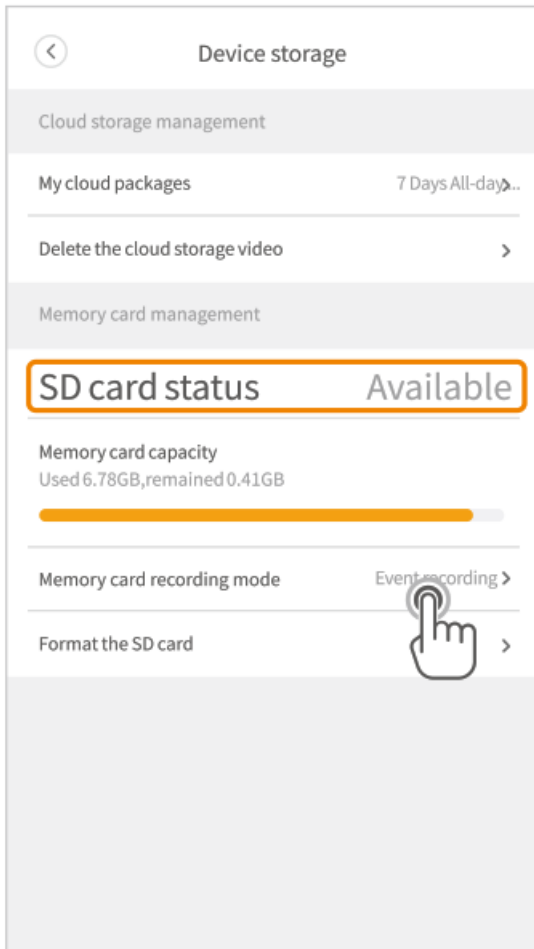
Video Recording

IMPORTANT:

1. Two recording options are available for the camera: recording videos to a memory card and the cloud(optional).
2. The camera accepts a card with a capacity of up to 128G, please select a high-quality memory card with a reliable brand for it.
3. The camera loops to record videos, which means the latest videos will overwrite the oldest ones when the storage reaches full capacity.

1. Record videos to a memory card

1. Insert a memory card (not included), then power on the camera.
2. Go to Setting > Device storage to check if your memory card is available.
3. Select a recording mode. Not recording means that the camera won't record videos to the memory card. Event recording means that the camera will record videos to the memory card when sound/motion is detected. All-day recording means that the camera will always record videos to the memory card.



2. Record videos to the cloud

The videos will be recorded to the cloud once you've subscribed to a cloud plan. Please refer to Page 18 for instructions on cloud subscription.





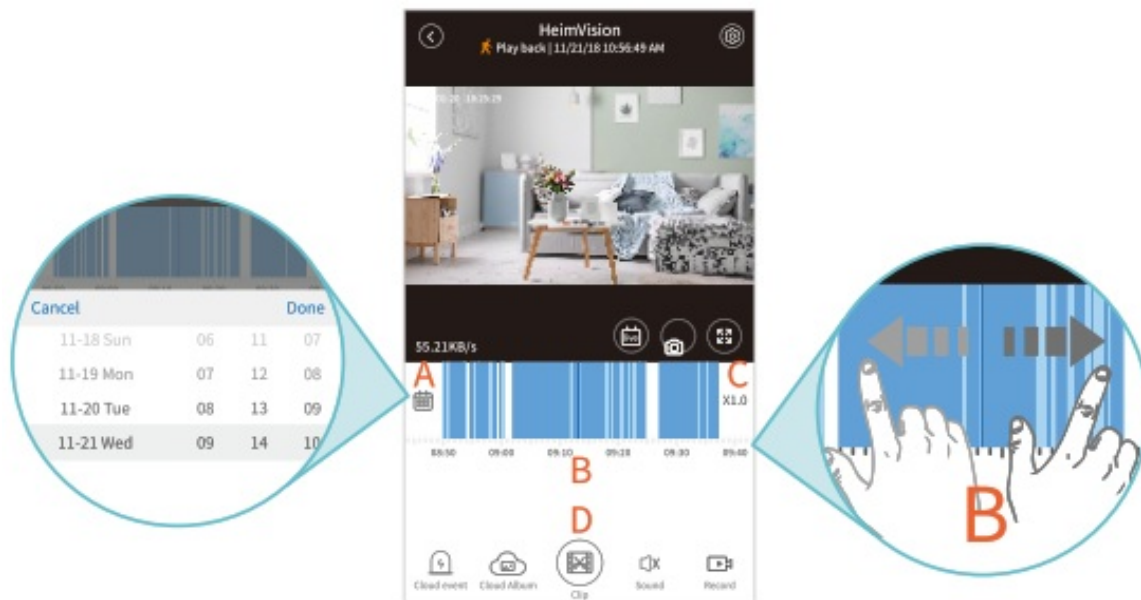
Tip:

Recording videos to the cloud is recommended since it's safe to save videos on the encrypted cloud and no worries about any data loss.

Video Playback

Go to Setting > Play Videos From, select Memory card or Cloud to play recorded videos from a memory card or cloud accordingly.

After selecting, please tap  on the interface of Live Video to check the video recorded. Tap  to play the live video again.



Calendar:

Tap to show a calendar, then select an exact time to check the video recorded.

Timeline:


Slide leftward or rightward on the timeline to play the video recorded. Spread/pinch or double tap on the timeline to enlarge or narrow it.

When you play recorded videos from the cloud, the timeline will show two colors to differentiate videos recorded with sound/ motion detected (deep blue parts) from videos recorded without anything detected (light blue parts)

Playback speed:

Only available for playing videos from the cloud. Tap to play the video at x1.0, x2.0, x4.0 or x0.5 speed.

Clip: Only available for playing videos from the cloud.

Tap  to cut the video and save it to the cloud album or delete it.

Alarms and Notifications

The camera will record videos to the cloud or memory card only when motion/sound is detected if you subscribe to a cloud plan of Alarm Trigger Recording or select Event Recording for your memory card.

Apart from recording videos, the camera can also give out an Alarm Tone and send push notifications when motion/sound is detected.

1. Alarm Settings

Motion detection and sound detection are enabled by default.

1. Adjust detection sensitivity

- * This function aims to set the sensitivity for motion detection.
- * Go to Setting> Detection sensitivity to set the sensitivity level.
- *Medium is the default setting. Please set it to Low to reduce false alarms if you don't want to be disturbed frequently.

2. Select detection area

- * This function aims to reduce false alarms and decrease the frequency of being disturbed. You can set the detection area for motion detection. All areas are selected by default.

Step 1:

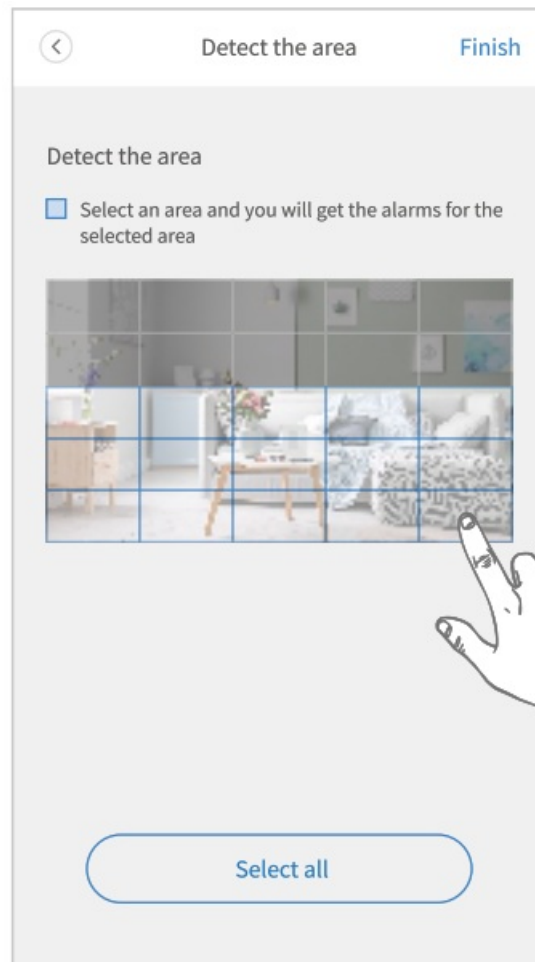
Go to Setting > Detection area to start setting.

Step 2:

Tap on the preview image to select the detection areas.

Detection areas selected are those parts with blue frames.

Tap Finish to complete settings.



3. Set alarm tone

* This option aims to turn on/off the buzzer of the camera.

* Go to Setting and turn on Alarm Tone, then the camera will give out alarm tone when motion/sound detected.

2. Notification Settings

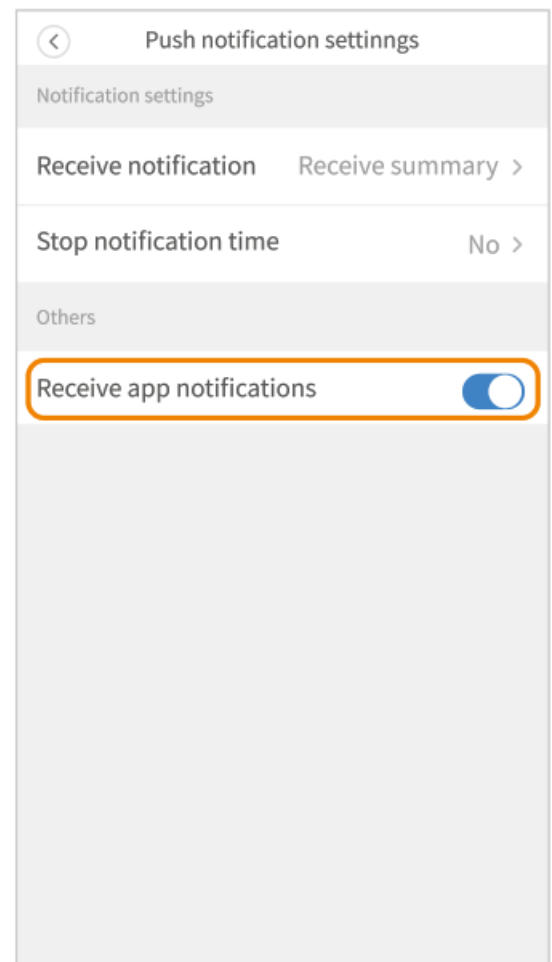
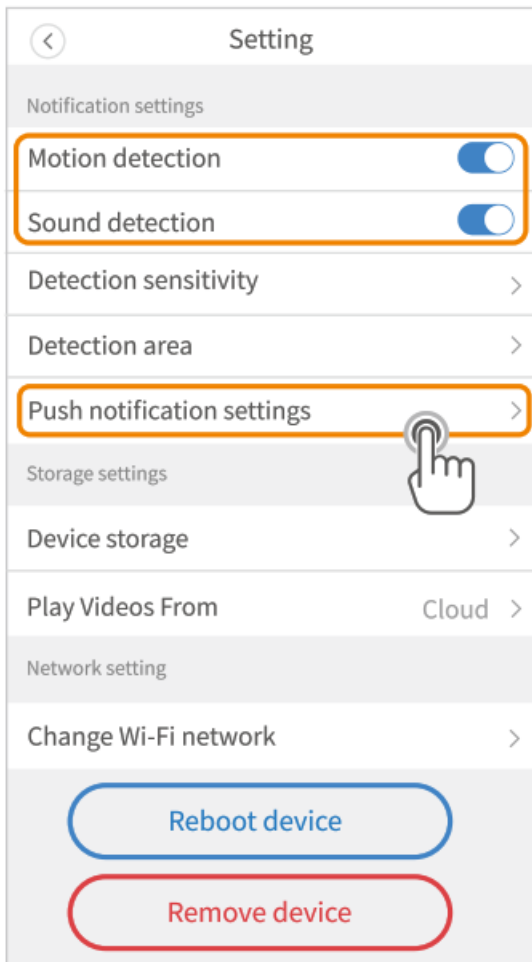
1. Switch on the notifications

Step 1: Go to Setting to enable Motion detection/Sound detection.

Step 2: Go to Push notification settings to switch on the option of Receive app notification.

Step 3:

You will receive push notifications on your mobile device when motion/sound detected.



2. Set notification frequency

- * Select Receive all notification and you will receive all the notifications.
- * Select Receive a summary and set a time interval for receiving summarized notifications.

3. Stop notifications

Step 1: Go to Setting > Push notification setting > Stop notification time.

Step 2: Tap Add a schedule to start setting a schedule for not receiving notifications. Up to 3 schedules can be set.



Notes:

1. To delete the schedule, slide leftward on the schedule and tap **Delete**.
2. Please keep the App HeimLink running in the background.
3. You won't receive push notifications when watching live videos.


Device Sharing



IMPORTANT:

1. Please make sure your family members have registered a HeimLink account before sharing.
2. You can share the camera with as many accounts as possible. However, we recommend 3 accounts at most for a better experience.

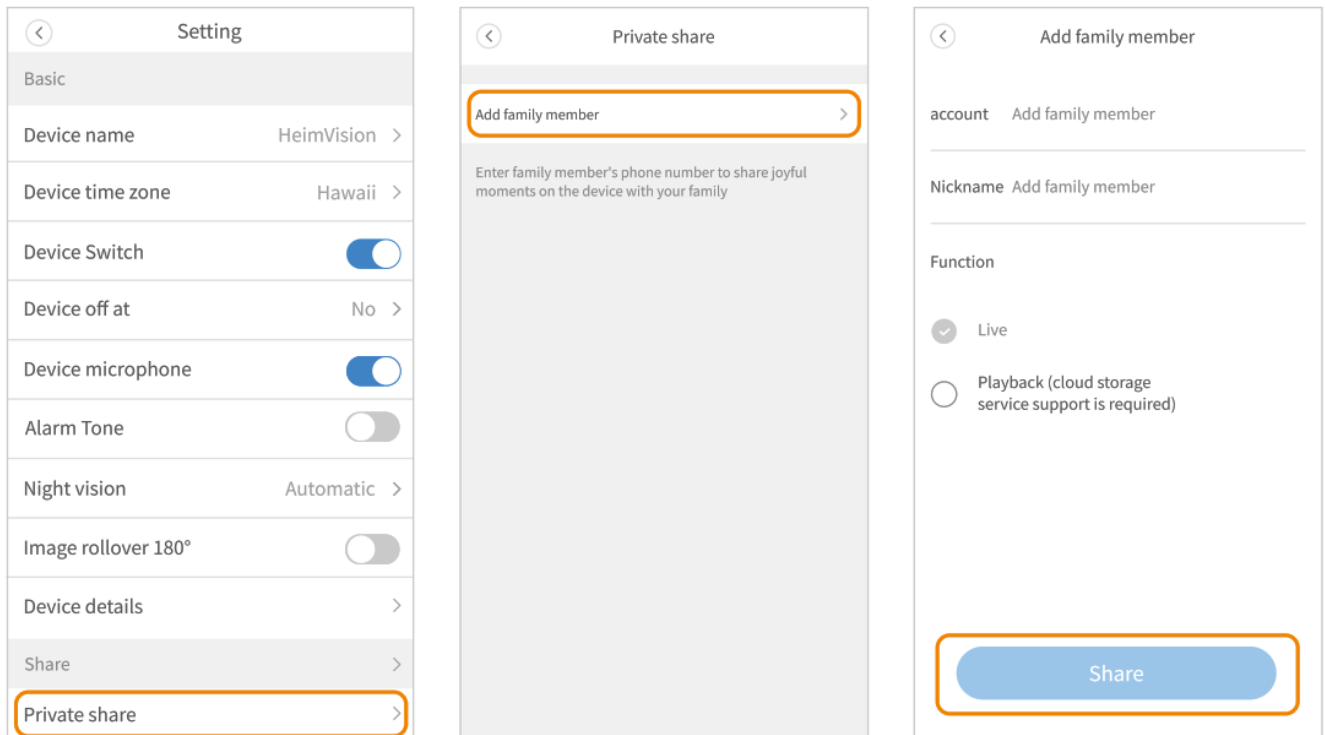
Step 1:

Tap  on the main interface or go to Setting > Private share > Add family member, then enter your family

member's account.


Step 2:

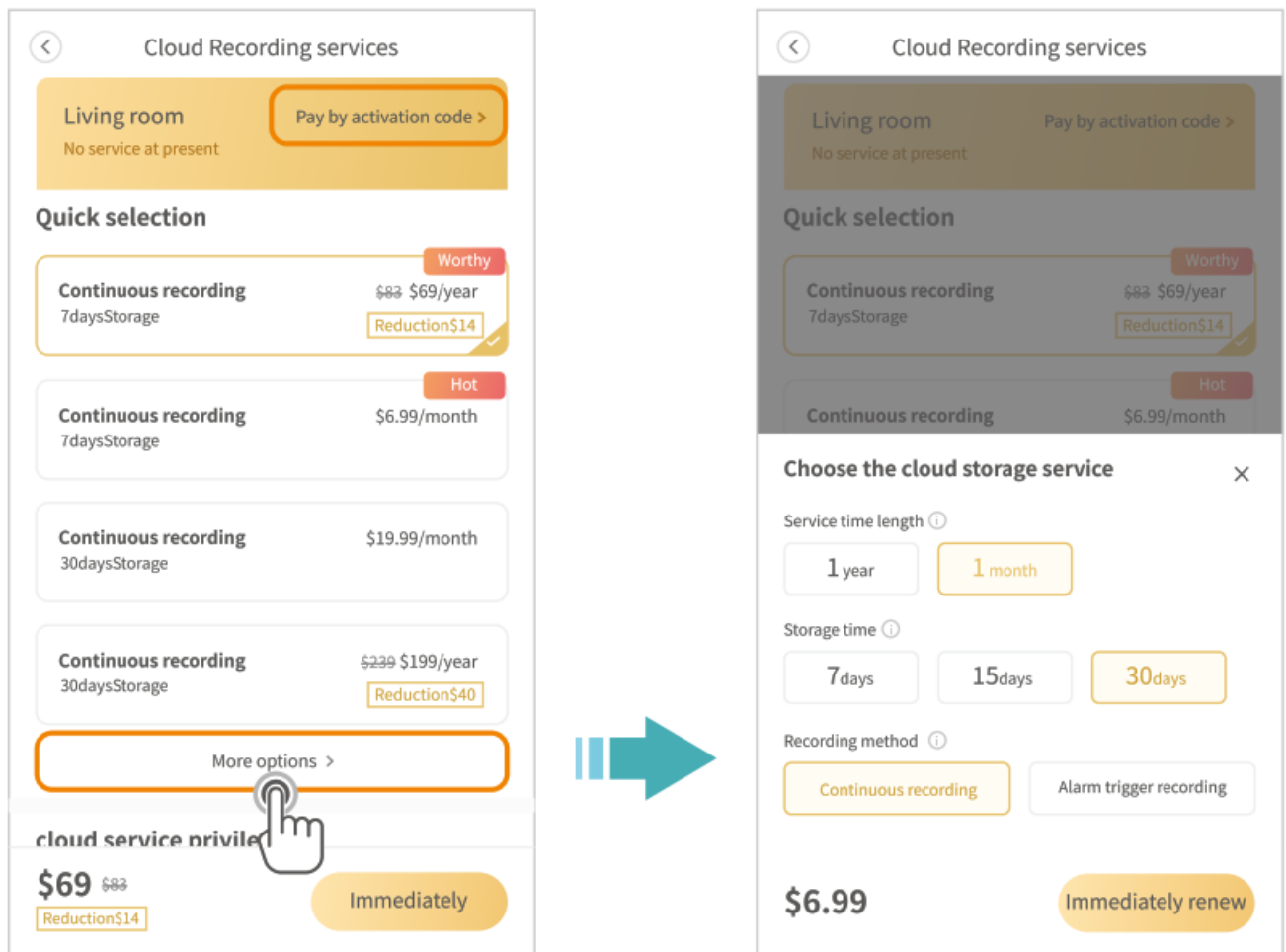
Select the function you'd like to share with your family member, then tap Share.



Cloud Service

1. Subscribe to a cloud plan

Tap  on the main interface or go to Setting > Device storage > My cloud packages to subscribe to a cloud service package. However, if you've got an activation code, you can also tap Pay by activation code and enter the code to activate the cloud plan.



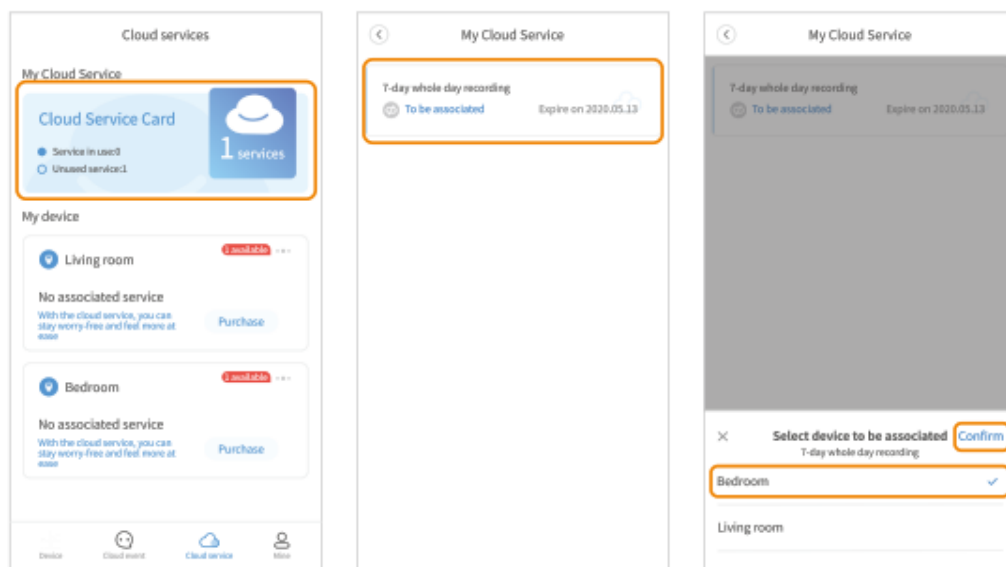
After the cloud plan is activated, it will be bound to this camera by default.

2. Change the cloud plan to a new camera

If you'd like to change the cloud plan to a new camera connected, please refer to the steps below.

1. Tap Cloud service on the bottom bar of the main interface to check your cloud service.

1. Tap Cloud Service Card, then tap your cloud plan. Select the new camera and tap Confirm.



3. Cancel auto renewal of cloud service


If you selected auto renewal when subscribing with a cloud plan, you can cancel the renewal when it's not needed.

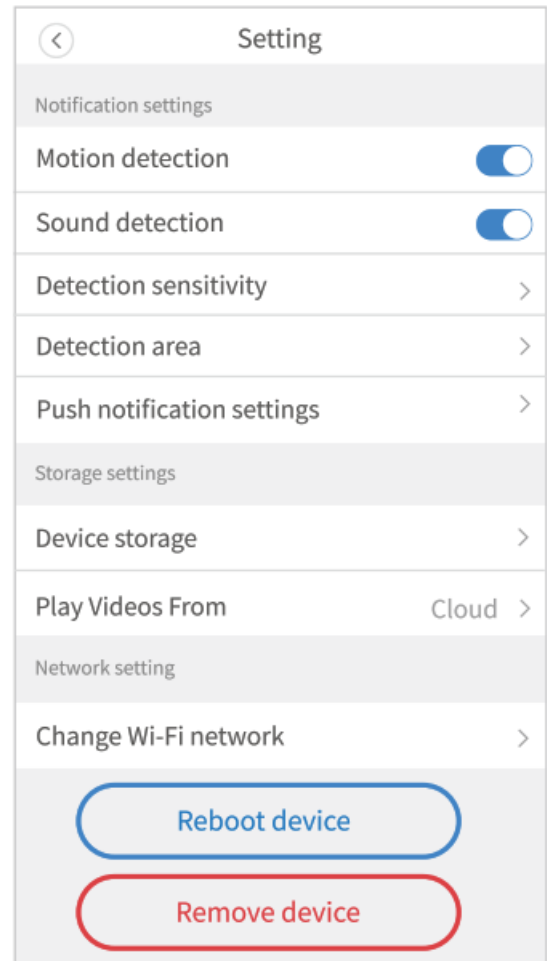
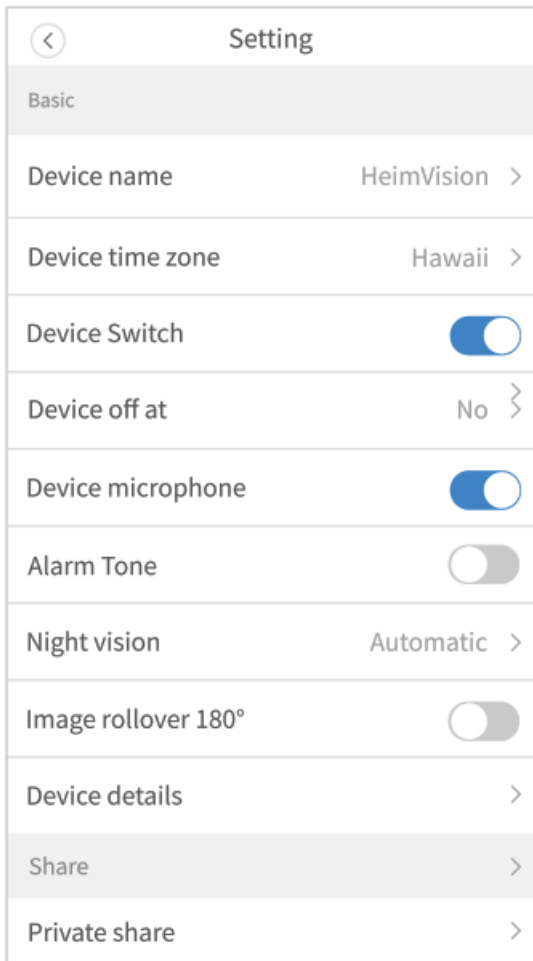
Step 1: Please visit <https://heimlink.heimvision.com/> and log in with your account. |

Step 2: Click your account and Account Info to check your Payment Information, then tap Cancel to cancel auto

renewal.

More Settings

Tap  on the main interface or upper right corner of the live video interface to check more settings about the camera.



Device name: Tap to rename your camera.

Device time zone: Select the time zone.

Device switch: Turn on/off your camera.

Device off at: Set a schedule to automatically turn off your camera, and up to 3 schedules can be set. To delete a schedule, slide leftward on the schedule and tap **Delete**.

Device microphone: Enable or disable the microphone of the camera. If this option is disabled, you won't hear any sound for live video and the video recorded. Additionally, the function of sound detection is unavailable.

Alarm Tone: Turn on/off the buzzer of the camera.

Night vision: Turn on/off the night vision mode or set it to Automatic.

Image rollover 180°: Tap to flip the image 180° when you mount the camera on the ceiling.

Device details: Check the firmware version, model type, device ID, and Mac address. Change the frequency to avoid screen flickering.

Device storage: Check your cloud plan. Delete the videos saved on the cloud. Check the memory card status and its capacity. Set the recording mode for the memory card. Format the memory card. Change Wifi network: Change the Wifi.

Reboot Device: Tap to reboot your device.

Remove Device: Tap to remove your device.

USE THE CAMERA ON COMPUTER

Visit <https://heimlink.heimvision.com/> through the browser of your computer, then log in with your account to

check the live video.



Tip: If you'd like to check the videos recorded to the memory card on your computer, please insert the memory card with a card reader into the computer, and play the videos with the player that supports MP4 format.

TROUBLESHOOTING

Q1. Why did I fail to connect the camera to my account? ‘

- * The camera only supports 2.4GHz Wifi and make sure you've selected the correct one. If you use a dual band router, please contact the router seller or us for more help.
- * Avoid using special characters or symbols in your Wifi name and password, such as @-!#\$%^&* and so on. If the connection failed, please press and hold the Reset button for S-6s to reset the camera, then connect the camera again.

Q2. Why can't the camera read my memory card?

- * The camera doesn't support hot plugging. Please insert a memory card before powering on the camera, or reboot the camera after inserting the card.
- * Please use a high-quality memory card with a reliable brand.
- * Please make sure the memory card is not damaged.

Q3. Why can't I play the recorded videos from my memory card?

- * Make sure you've inserted a memory card into the camera.
- * Go to Setting > Device storage to check if the memory card status is available.
- * Check your Memory card recording mode, make sure you didn't select Not recording.
- * Go to Setting > Play Videos From to verify that you've selected Memory card.
- * Go to Setting > Device storage > Memory card recording mode to select Not recording to stop recording videos, then play the videos recorded again.
- * Make sure your network connection is stable enough when playing the videos recorded.

Q4. Can I simultaneously watch videos from multiple cameras?

- * Multiple cameras can be connected to the same account. You can simultaneously watch the live videos from 4

cameras with split-screen mode by tapping the icon  on the main interface.

Q5. Why can't I get the notifications on my phone?

- * Make sure you've allowed HeimLink to send push notifications in the settings of your mobile device.
- * Make sure you switch on all the options in Push notification settings.
- * Make sure the current time is not during the scheduled time you set to stop the notification.

SPECIFICATIONS

Frequency Range	Wifi: 2412-2472MHz
Transmit Power (EIRP) For CE	9.41dBm(802.11b), 7.29dBm(802.11g), 7.38dBm(802.11n-HT20)

FCC Caution

Any Changes or modifications not expressly approved by the party responsible for compliance could void the user's authority to operate the equipment. This device complies with part 15 of the FCC Rules. Operation is subject to the following two conditions: (1) This device may not cause harmful interference, and (2) This device must accept any interference received, including interference that may cause undesired operation.

NOTE: This equipment has been tested and found to comply with the limits for a Class B digital device, pursuant to part 15 of the FCC Rules. These limits are designed to provide reasonable protection against harmful interference in a residential installation. This equipment generates, uses and can radiate radio frequency energy and, if not installed and used in accordance with the instructions, may cause harmful interference to radio

communications. However, there is no guarantee that interference will not occur in a particular installation. If this equipment does cause harmful interference to radio or television reception, which can be determined by turning the equipment off and on, the user is encouraged to try to correct the interference by one or more of the following measures:

- Reorient or relocate the receiving antenna.
- Increase the separation between the equipment and receiver.
- Connect the equipment into an outlet on a circuit different from that to which the receiver is connected.
- Consult the dealer or an experienced radio/TV technician for help.

This equipment complies with FCC radiation exposure limits set forth for an uncontrolled environment. This equipment should be installed and operated with minimum distance 20cm between the radiator & your body. This transmitter must not be co-located or operating in conjunction with any other antenna or transmitter.

ISED Warning

This device complies with Industry Canada licence-exempt RSS standard(s). Operation is subject to the following two conditions:

1. This device may not cause interference, and
2. This device must accept any interference, including interference that may cause undesired operation of the device.

The device is compliance with RF exposure guidelines, users can obtain Canadian information on RF exposure and compliance. The minimum distance from body to use the device is 20cm. L'appareil est conforme aux directives d'exposition aux RF, les utilisateurs peuvent obtenir des informations canadiennes sur l'exposition aux RF et la conformité la distance minimale du corps pour utiliser l'appareil est de 20cm.

CAUTION

 The symbol indicates DC voltage



RECYCLING

This product bears the selective sorting symbol for Waste electrical and electronic equipment (WEEE). This means that this product must be handled pursuant to European directive 2012/19/EU in order to be recycled or dismantled to minimize its impact on the environment. User has the choice to give his product to a competent recycling organization or to the retailer when he buys a new electrical or electronic equipment. This product can be used across EU member states.



<https://qrs.ly/l6bafso>

We will update the user manual regularly, please scan the QR code or visit <https://www.heimvision.com/pages/download> for the latest version if it's available.



HeimVision

CUSTOMER SUPPORT

North America : support@heimvision.com

United Kingdom : support.uk@heimvision.com

 @HeimVisionOfficial	 @heimvision_official	 www.heimvision.com
https://qrs.ly/2xbd6nm	https://qrs.ly/57bd6nl	https://qrs.ly/dsbd6nn

Documents / Resources



[HeimVision HMA2 Smart Wi-Fi Camera](#) [pdf] User Manual
HMAX, 2AQ3A-HMAX, 2AQ3AHMAX, HMA2 Smart Wi-Fi Camera, HMA2, Smart Wi-Fi Camera, IPC-618