

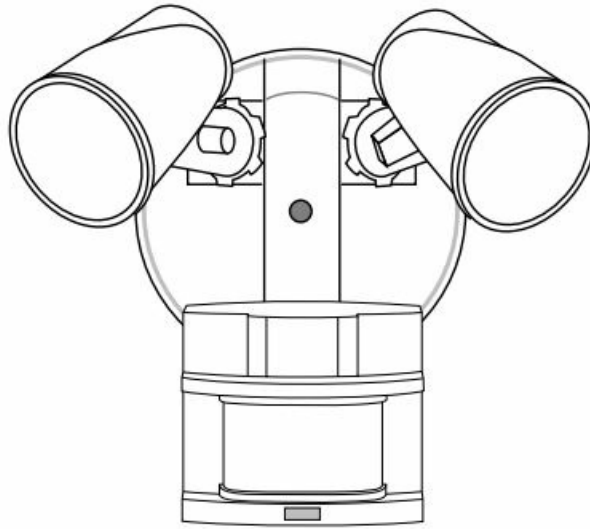


# Heath Zenith 5411 Motion Sensor Light Control User Manual

[Home](#) » [Heath Zenith](#) » Heath Zenith 5411 Motion Sensor Light Control User Manual 

Heath Zenith 5411 Motion Sensor  
Light Control User Manual

### MOTION SENSOR LIGHT CONTROL



The illustrations may vary from the actual product.

Before returning to the store,  
please contact our support team for assistance at 800-858-8501.

For additional information, download the full manual at [www.heath-zenith.com/support/owners-manuals](http://www.heath-zenith.com/support/owners-manuals).

#### Contents

- [1 SAFETY INFORMATION](#)
- [2 HARDWARE CONTENTS](#)
- [3 INSTALLATION](#)
- [4 TESTING AND ADJUSTMENTS](#)
- [5 Documents / Resources](#)
  - [5.1 References](#)

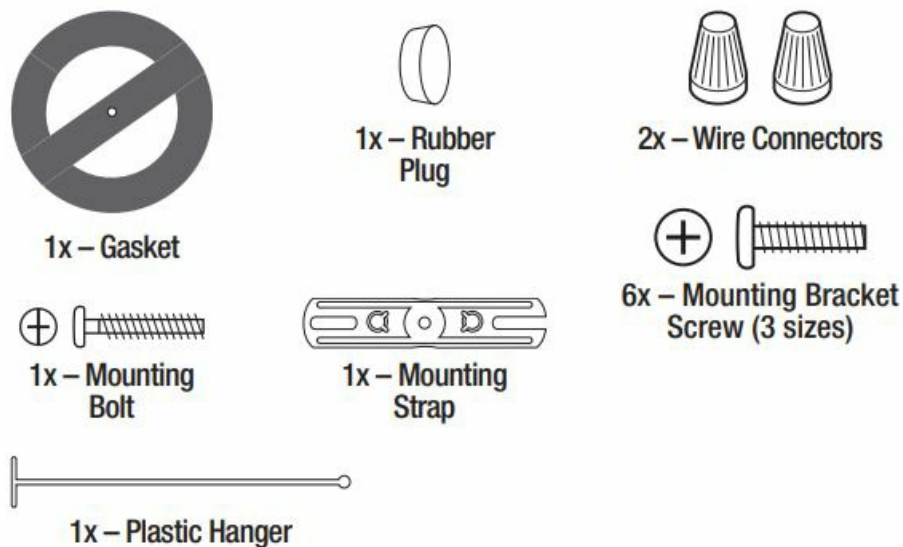
## SAFETY INFORMATION

- This light fixture requires 120-volts AC.
- Some codes require installation by a qualified electrician.
- WARNING: Turn the power off at the circuit breaker or fuse.  
Place tape over the circuit breaker switch and verify power is off at the light fixture.
- WARNING: Risk of fire. Do not aim the bulbs at a combustible surface within 3 ft. (1 m).
- WARNING: Risk of fire. Keep the bulbs at least 2 in. (51 mm) from combustible materials.
- CAUTION: Keep the motion sensor at least 1 in. (25 mm) away from the bulbs.
- CAUTION: Keep the bulb holders 30° below horizontal to avoid water damage and electrical shock.

- CAUTION: To avoid water damage and the risk of electrical shock, the motion sensor controls must be facing the ground when the installation is complete.
- CAUTION: Burn hazard. Allow the light fixture and the bulb to cool before touching.
- CAUTION: Do not cut any wires with factory installed wire connectors or remove the wire connectors.
- NOTICE: Do not connect this light fixture to a dimmer switch or timer.

## HARDWARE CONTENTS

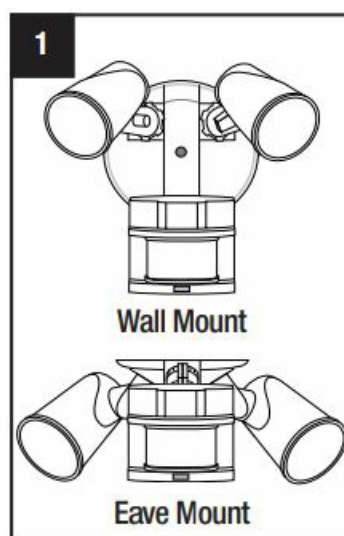
Note: Illustrations may vary from actual unit.



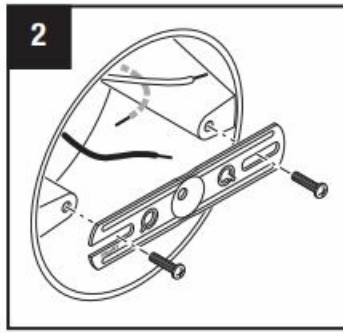
## INSTALLATION

⚠ WARNING: Turn power off at circuit breaker or fuse when wiring fixture or replacing bulbs. Place tape over circuit breaker switch and verify power is off at the fixture.

1. Adjust the motion sensor for proper operation and to avoid the risk of electrical shock.
  - For wall mount installation, ensure the sensor controls are facing toward the ground.
  - For under eave installation, the sensor must be rotated so the sensor controls are facing toward the ground.



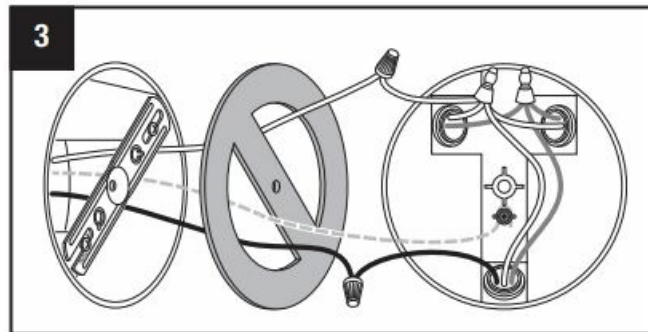
2. Install the mounting strap as shown using two screws that fit your junction box.



3. Wire the light fixture using the included wire connectors.

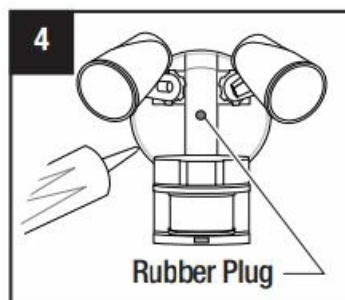
Note: All wiring must be run in accordance with the National Electrical Code through conduit or another acceptable means. Contact a qualified electrician if there is any question as to the suitability of the system.

- Route the light control's wires through the large gasket hole.
- Connect black to black
- Connect white to white
- Connect the junction box ground wire to the green screw on the back of the canopy.



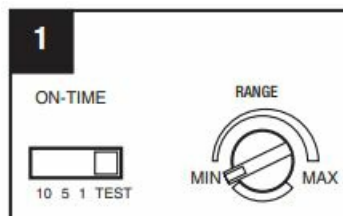
4. Mounting the light fixture

- Make sure wire connectors and wires are inside the junction box.
- Align the light control cover plate and cover plate gasket. Secure with the mounting bolt.
- Push the rubber plug firmly into place.
- Caulk around the canopy and mounting surface with silicone sealant.



## TESTING AND ADJUSTMENTS

1. Testing Setup

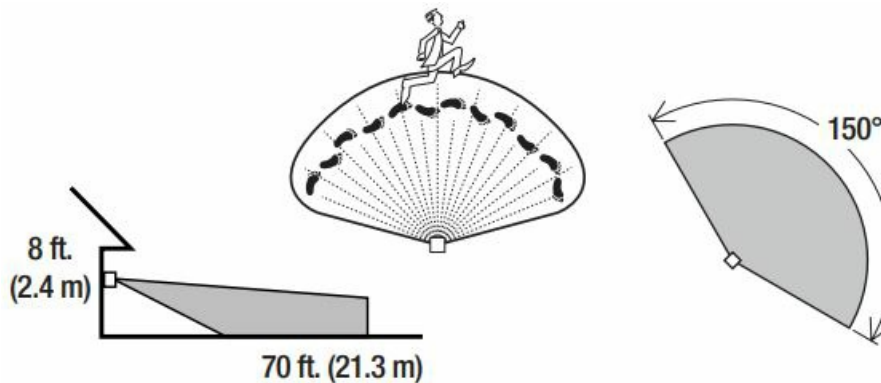


- Set the "ON-TIME" switch to the "TEST" position.

- Turn the “RANGE” dial to the “MIN” position.
- Aim the motion sensor in the general direction of the area to be covered.
- Turn on the circuit breaker or fuse and the light switch.
- Allow the sensor to completely warm up (90 seconds) before beginning the setup process.
- Perform a walk test. Walk in an arc across the front of the sensor.

## 2. .Final Setup

- Adjust the sensitivity (RANGE) to increase or decrease the range as needed. Too much sensitivity may cause false triggering due to heat sources in the coverage area.
- The “ON-TIME” switch determines the amount of time the light will stay on full bright after all motion has stopped. Set the “ON-TIME” switch to the 1, 5, or 10 minute position.



## Documents / Resources



[Heath Zenith 5411 Motion Sensor Light Control](#) [pdf] User Manual  
5411 Motion Sensor Light Control, 5411, Motion Sensor Light Control, Sensor Light Control, Light Control, Control

## References

- [User Manual](#)

[Manuals+](#), [Privacy Policy](#)

This website is an independent publication and is neither affiliated with nor endorsed by any of the trademark owners. The "Bluetooth®" word mark and logos are registered trademarks owned by Bluetooth SIG, Inc. The "Wi-Fi®" word mark and logos are registered trademarks owned by the Wi-Fi Alliance. Any use of these marks on this website does not imply any affiliation with or endorsement.