



# HEATFAST HF80C Series Convection Construction Heater Owner's Manual

[Home](#) » [HEATFAST](#) » HEATFAST HF80C Series Convection Construction Heater Owner's Manual 

## Contents

- [1 HEATFAST HF80C Series Convection Construction Heater](#)
- [2 Product Information](#)
- [3 Product Usage Instructions](#)
- [4 GENERAL SAFETY INFORMATION](#)
- [5 FEATURES AND SPECIFICATIONS](#)
- [6 GENERAL INFORMATION](#)
- [7 SAFETY PRECAUTIONS](#)
- [8 ASSEMBLY](#)
- [9 OPERATING INSTRUCTIONS](#)
- [10 MAINTENANCE & STORAGE](#)
- [11 HF80C PARTS LIST](#)
- [12 SERVICE RECORD](#)
- [13 LIMITED WARRANTY](#)
- [14 Documents / Resources](#)
  - [14.1 References](#)
- [15 Related Posts](#)

# **HEATFAST**

**HEATFAST HF80C Series Convection Construction Heater**



## Product Information

### Specifications

- **Model:** HF80C/HF200C
- **Max Supply Pressure:** To Regulator MIN (MAX=Bottle Pressure)
- **Regulator** Out Ignition Min Ambient Temp.
- **BTU** Rating Low-High
- **Fuel** Consumption
- **Hose** Length
- **Ventilation:** Minimum openings required

### Product Usage Instructions

#### General Safety Information

- **WARNING:** If the information in this manual is not followed exactly, a fire or explosion may result causing property damage, personal injury, or loss of life. Service must be performed by a qualified service agency.
- **READ INSTRUCTIONS CAREFULLY:** Read and follow all instructions. Place instructions in a safe place for future reference. Do not allow anyone who has not read these instructions to assemble, light, adjust, or operate the heater.

- This is an unvented gas-fired portable heater. It uses air (oxygen) from the area in which it is used. Adequate combustion and ventilation air must be provided.

## General Hazard Warning

- **WARNING:** YOUR SAFETY IS IMPORTANT TO YOU AND TO OTHERS, SO PLEASE READ THESE INSTRUCTIONS BEFORE YOU OPERATE THIS HEATER.
- **GENERAL HAZARD WARNING:** FAILURE TO COMPLY WITH THE PRECAUTIONS AND INSTRUCTIONS PROVIDED WITH THIS HEATER CAN RESULT IN DEATH, SERIOUS BODILY INJURY, AND PROPERTY LOSS OR DAMAGE FROM HAZARDS OF FIRE, EXPLOSION, BURN, ASPHYXIATION, CARBON MONOXIDE POISONING, AND/OR ELECTRICAL SHOCK. ONLY PERSONS WHO CAN UNDERSTAND AND FOLLOW THE INSTRUCTIONS SHOULD USE OR SERVICE THIS HEATER. IF YOU NEED ASSISTANCE OR HEATER INFORMATION SUCH AS AN INSTRUCTIONS MANUAL, LABELS, ETC. CONTACT THE MANUFACTURER.
- **WARNING:** NOT FOR HOME OR RECREATIONAL VEHICLE USE.
- **WARNING:** FIRE, BURN, INHALATION, AND EXPLOSION HAZARD. KEEP SOLID COMBUSTIBLES, SUCH AS BUILDING MATERIALS, PAPER OR CARDBOARD, A SAFE DISTANCE AWAY FROM THE HEATER AS RECOMMENDED BY THE INSTRUCTIONS NEVER USE THE HEATER IN SPACES THAT DO OR MAY CONTAIN VOLATILE OR AIRBORNE COMBUSTIBLES, OR PRODUCTS SUCH AS GASOLINE, SOLVENTS, PAINT THINNER, DUST PARTICLES OR UNKNOWN CHEMICALS.
- **WARNING:** THE STATE OF CALIFORNIA REQUIRES THE FOLLOWING WARNING COMBUSTION BY-PRODUCTS PRODUCED WHEN USING THIS PRODUCT CONTAIN CARBON MONOXIDE, A CHEMICAL KNOWN TO THE STATE OF CALIFORNIA TO CAUSE CANCER AND BIRTH DEFECTS (OR OTHER REPRODUCTIVE HARM). THIS PRODUCT CONTAINS CHEMICALS KNOWN TO THE STATE OF CALIFORNIA TO CAUSE CANCER AND BIRTH DEFECTS OR OTHER REPRODUCTIVE HARM.

## Operating Precautions

**WARNING:** Never leave the heater unattended while operating. Disconnect the heater from its power source when not in use.

## Safety Precautions

1. Ensure the heater is placed on a stable and level surface.
2. Keep solid combustibles, such as building materials, paper, or cardboard, a safe distance away from the heater as recommended by the instructions.
3. Never use the heater in spaces that contain volatile or airborne combustibles, or products such as gasoline, solvents, paint thinner, dust particles, or unknown chemicals.
4. Follow all ventilation requirements to prevent shooting damage.
5. Keep propane containers at least 7 ft. (2.13m) away from the heater and do not direct exhaust toward containers.
6. Use only the hose and regulator assembly provided with the heater. Match the color stripe on the hang tag.

## FAQ

**Q: Can I use this heater in my home or recreational vehicle?**

- **A:** No, this heater is not suitable for home or recreational vehicle use.

**Q: What should I do if I need assistance or heater information?**

- **A:** Please contact the manufacturer for assistance or heater information such as an instructions manual or labels.
- **WARNING:** If the information in this manual is not followed exactly, a fire or explosion may result causing property damage, personal injury, or loss of life.
- Do not store or use gasoline or other flammable vapors and liquids in the vicinity of this or any other appliance.
- An LP cylinder not connected for use shall not be stored in the vicinity of this or any other appliance.

**WHAT TO DO IF YOU SMELL GAS:**

- Do not try to light appliances.
- Extinguish any open flame.
- Shut off the gas to the appliance.
- Service must be performed by a qualified service agency.
- **READ INSTRUCTIONS CAREFULLY:** Read and follow all instructions. Place instructions in a safe place for future reference. Do not allow anyone who has not read these instructions to assemble, light, adjust or operate the heater.
- This is an unvented gas-fired portable heater. It uses air (oxygen) from the area in which it is used. Adequate combustion and ventilation air must be provided.

**GENERAL SAFETY INFORMATION**

**WARNING:**

- YOUR SAFETY IS IMPORTANT TO YOU AND TO OTHERS, SO PLEASE READ THESE INSTRUCTIONS BEFORE YOU OPERATE THIS HEATER.

**GENERAL HAZARD WARNING:**

- FAILURE TO COMPLY WITH THE PRECAUTIONS AND INSTRUCTIONS PROVIDED WITH THIS HEATER, CAN RESULT IN DEATH, SERIOUS BODILY INJURY AND PROPERTY LOSS OR DAMAGE FROM HAZARDS OF FIRE, EXPLOSION, BURN, ASPHYXIATION, CARBON MONOXIDE POISONING, AND/OR ELECTRICAL SHOCK.
- ONLY PERSONS WHO CAN UNDERSTAND AND FOLLOW THE INSTRUCTIONS SHOULD USE OR SERVICE THIS HEATER.
- IF YOU NEED ASSISTANCE OR HEATER INFORMATION SUCH AS AN INSTRUCTIONS MANUAL, LABELS, ETC. CONTACT THE MANUFACTURER.

**WARNING:**

- NOT FOR HOME OR RECREATIONAL VEHICLE USE.
- FIRE, BURN, INHALATION, AND EXPLOSION HAZARD. KEEP SOLID COMBUSTIBLES, SUCH AS BUILDING MATERIALS, PAPER, OR CARDBOARD, A SAFE DISTANCE AWAY FROM THE HEATER AS RECOMMENDED BY THE INSTRUCTIONS
- NEVER USE THE HEATER IN SPACES THAT DO OR MAY CONTAIN VOLATILE OR AIRBORNE COMBUSTIBLES, OR PRODUCTS SUCH AS GASOLINE, SOLVENTS, PAINT THINNER, DUST PARTICLES, OR UNKNOWN CHEMICALS.
- THE STATE OF CALIFORNIA REQUIRES THE FOLLOWING WARNING
- COMBUSTION BY-PRODUCTS PRODUCED WHEN USING THIS PRODUCT CONTAIN CARBON MONOXIDE, A CHEMICAL KNOWN TO THE STATE OF CALIFORNIA TO CAUSE CANCER AND BIRTH DEFECTS (OR OTHER REPRODUCTIVE HARM).
- THIS PRODUCT CONTAINS CHEMICALS KNOWN TO THE STATE OF CALIFORNIA TO CAUSE CANCER AND BIRTH DEFECTS OR OTHER REPRODUCTIVE HARM.
- **WARNING:** Never leave the heater unattended while operating. Disconnect the heater from its power source when not in use.

## FEATURES AND SPECIFICATIONS

MAX SUPPLY PRESSURE:	HF80C	HF200C
To Regulator MIN (MAX=Bottle Pressure)	5PSI (34.5 kPa)	15PSI (103 kPa)
Regulator Out	11" W.C. (2.74 kPa)	10PSI (68.9 kPa)
Ignition	Piezo	Piezo
Min Ambient Temp.	0° F (17.8) ° C	0° F (17.8) ° C
BTU Rating Low-High	30,000-80,000 BTU/HR (8.8-23.4 kW)	75,000-200,000 BTU/HR (22-58.6 kW)
Fuel Consumption	1.4-3.7 LBS/HR (.74-1.8 kg/HR)	3.5-9.3 LBS/HR (1.44-4.32 kg/HR)
Hose Length	15' (456 cm)	15' (456 cm)
VENTILATION:		
Minimum openings required	2ft² Opening near floor	2ft² Opening near floor
	2ft² Opening the near ceiling	2ft² Opening the near ceiling

**WARNING:** FAILURE TO FOLLOW THESE VENTILATION REQUIREMENTS MAY RESULT IN SOOTING DAMAGE.

RETAIN THIS MANUAL FOR FUTURE REFERENCE

## GENERAL INFORMATION

## OPERATING PRECAUTIONS

- This is a propane, direct-fired, convection heater. Its intended use is primarily temporary heating of buildings under construction, alteration, or repair. Propane is heavier than air. If propane leaks from a connection or fitting, it sinks to the floor, collecting there with the surrounding air, forming a potentially explosive mixture. Obviously, propane leaks should be avoided, so set up the propane supply with utmost care. Leak check new connections or reconnection with a soap and water solution and follow all connection instructions herein. Also, ask your propane dealer for advice on the propane application and supply installation and ask him to check it if there are any questions. This heater was designed and certified for use as a construction heater under ANSI Standard ANSI Z83.7-2017 CSA 2.14-2017. Check with your local fire safety authority if you have any questions about your applications. Other standards govern the use of fuel gases and heat-producing products in specific applications.
- Your local authority can advise you about these. Direct-fired means that all of the combustion products enter the heated space. Even though this heater operates very close to 100 percent combustion efficiency, it still produces small amounts of carbon monoxide. Carbon monoxide (called CO) is toxic. We can tolerate small amounts but not a lot. CO can build up in a heated space and failure to provide adequate ventilation could result in death. The symptoms of inadequate ventilation are:
  - headache
  - dizziness
  - burning eyes and nose
  - nausea
  - dry mouth or sore throat
- So, be sure to follow the advice about ventilation in these operating instructions.
- When the heater is to be operated in the presence of other people the user is responsible for properly acquainting those present with the safety precautions and instructions and of the hazards involved.
- **WARNING:** Never leave the heater unattended while operating. Disconnect the heater from its power source when not in use.

## SAFETY PRECAUTIONS

1. Check the heater thoroughly for damage. DO NOT operate a damaged heater.
2. DO NOT modify the heater or operate a heater that has been modified from its original condition.
3. DO NOT light or operate the heater unless the shells are fully extended and locked into position.
4. Use only propane gas.
5. Use only the VAPOR WITHDRAWAL propane supply. If there is any question about vapor withdrawal, ask your propane dealer.
6. Mount the propane cylinders vertically (shutoff valve up). Secure them from falling or being knocked over and protect them from damage.
7. Locate propane containers at least (USA) 7 ft. (2.13m) from the heater and do not direct exhaust toward containers.
8. **IMPORTANT** Use only the hose and regulator assembly provided with the heater. Match the color stripe on the hang tag attached to the hose assembly with the color on the label located near the propane inlet fitting on the heater. Inspect the hose assembly before each use of the heater. If there is excessive abrasion or wear, or the hose is cut, replace it with the hose assembly listed on the parts list before using the heater.
9. For indoor use only. The area must be well-ventilated. (Also see "Operating Precautions").

10. If at any time a gas odor is detected, IMMEDIATELY DISCONTINUE operation until the source of gas has been located and corrected.
11. Install the heater such that it is not directly exposed to water spray, rain, and/or dripping water.
12. Maintain minimum clearance from normal combustible material (like paper).
13. Due to the high surface and exhaust temperatures, adults and children must observe clearances to avoid burns or clothing ignition.
14. Operate only on a stable, level surface.
15. Do not use it with ductwork. Do not restrict inlet or exit.
16. Do not move, handle, or service while hot or burning.
17. Use only under local codes or, in the absence of local codes, with the Standard for the Storage and Handling of Liquefied Petroleum Gases ANSI/ NFPA 58 and CSA B149.1, Natural Gas and Propane Installation Code.

MINIMUM CLEARANCE	
From normal combustible material	
Clearance	
From sides	4 ft
From top	6 ft
Locate 10' from canvas or plastic tarpaulins or similar coverings and secure them to prevent flapping or movement due to wind action.	

## ODOR FADE WARNING

- **WARNING ASPHYXIATION HAZARD**
- DO NOT USE THIS HEATER FOR HEATING HUMAN LIVING QUARTERS.
- DO NOT USE IN UNVENTILATED AREAS.
- THE FLOW OF COMBUSTION AND VENTILATION AIR MUST NOT BE OBSTRUCTED.
- PROPER VENTILATION AIR MUST BE PROVIDED TO SUPPORT THE COMBUSTION AIR REQUIREMENTS OF THE HEATER BEING USED.
- REFER TO THE SPECIFICATION SECTION OF THE HEATER'S MANUAL, OR HEATER DATA PLATE, OR CONTACT THE FACTORY TO DETERMINE THE COMBUSTION AIR VENTILATION REQUIREMENTS OF THE HEATER.
- LACK OF PROPER VENTILATION AIR WILL LEAD TO IMPROPER COMBUSTION.
- IMPROPER COMBUSTION CAN LEAD TO CARBON MONOXIDE POISONING LEADING TO SERIOUS INJURY OR DEATH. SYMPTOMS OF CARBON MONOXIDE POISONING CAN INCLUDE HEADACHES DIZZINESS AND DIFFICULTY IN BREATHING.
- THE USE OF DIRECT-FIRED HEATERS IN THE CONSTRUCTION ENVIRONMENT CAN RESULT IN EXPOSURE TO LEVELS OF CO, CO<sub>2</sub>, AND NO<sub>2</sub> CONSIDERED TO BE HAZARDOUS TO HEALTH AND POTENTIALLY LIFE-THREATENING.
- KNOW THE SIGNS OF CO AND CO<sub>2</sub> POISONING
- HEADACHES, STINGING EYES
- DIZZINESS, DISORIENTATION

- DIFFICULTY BREATHING, FEELS OF BEING SUFFOCATED
- PROPER VENTILATION AIR EXCHANGE (OSHA 29 CFR 1926.57) TO SUPPORT COMBUSTION AND MAINTAIN ACCEPTABLE AIR QUALITY SHALL BE PROVIDED PER OSHA 29 CFR PART 1926.154, ANSI A10.10 SAFETY REQUIREMENTS FOR TEMPORARY AND PORTABLE SPACE HEATING DEVICES AND EQUIPMENT USED IN THE CONSTRUCTION INDUSTRY OR THE NATURAL GAS AND PROPANE INSTALLATION CODES CSA B149.1
- PERIODICALLY MONITOR LEVELS OF CO, CO<sub>2</sub>, AND NO<sub>2</sub> EXISTING AT THE CONSTRUCTION SITE – AT THE MINIMUM AT THE START OF THE SHIFT AND AFTER 4 HOURS.
- PROVIDE VENTILATION AIR EXCHANGE, EITHER NATURAL OR MECHANICAL, AS REQUIRED TO MAINTAIN ACCEPTABLE INDOOR AIR QUALITY

	USA 8-Hr Time-weighted average ( OSHA 29 CFR 1926.55 App A)	Canada 8-hr time-weighted average WorkSafe BC OHS Guidelines Part 5.1 and Ontario Workplaces Reg 833
CO	50 ppm	25 ppm
CO <sub>2</sub>	5000 ppm	5000 ppm
NO <sub>2</sub>		3 ppm (Reg 833)
	USA – Ceiling Limit (Short-Term Exposure Limit = 15 minutes)	Canada STEL (15 minutes Reg 833/1 hour WSBC) WorkSafe BC OHS Guidelines Part 5.1 and Ontario Workplaces Reg 833
CO		100 ppm
CO <sub>2</sub>		15000 ppm (WSBC) 30000 ppm (Reg 833)
NO <sub>2</sub>	5 ppm	1.0 ppm (WorkSafeBC) 5.0 ppm (Reg 833)

- Ensure that the flow of combustion and ventilation air exchange cannot become obstructed.
- As the building ‘tightens up’ during the construction phases ventilation may need to be increased.

## FUEL GAS ODOR

- LP gas and natural gas have man-made odorants added specifically for the detection of fuel gas leaks. If a gas leak occurs you should be able to smell the fuel gas. Since Propane (LP) is heavier than air you should smell for the gas odor low to the floor.
- ANY GAS ODOR IS YOUR SIGNAL TO GO INTO IMMEDIATE ACTION!
- Do not take any action that could ignite the fuel gas. Do not operate any electrical switches. Do not pull any power supply or extension cords. Do not light matches or any other source of flame. Do not use your telephone.
- Get everyone out of the building and away from the area immediately.
- Close all propane (LP) gas tank or cylinder fuel supply valves, or the main fuel supply valve located at the meter if you use natural gas.



- Propane (LP) gas is heavier than air and may settle in low areas. When you have reason to suspect a propane leak, keep out of all low areas.
- Use your neighbor's phone and call your fuel gas supplier and your fire department. Do not re-enter the building or area.
- Stay out of the building and away from the area until declared safe by the firefighters and your fuel gas supplier.
- FINALLY, let the fuel gas service person and the firefighters check for escaped gas. Have them air out the building and area before you return.
- Properly trained service people must repair any leaks, check for further leakages, and then relight the appliance for you.

## **ODOR FADING - NO ODOR DETECTED**

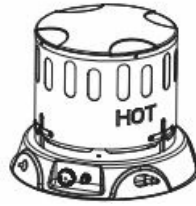
- Some people cannot smell well. Some people cannot smell the odor of the man-made chemical added to propane (LP) or natural gas. You must determine if you can smell the odorant in these fuel gases.
- Learn to recognize the odor of propane (LP) gas and natural gas. Local propane (LP) gas dealers will be more than happy to give you a scratch-and-sniff pamphlet. Use it to become familiar with the fuel gas odor.
- Smoking can decrease your ability to smell. Being around an odor for a while can affect your sensitivity to that particular odor. Odors present in animal confinement buildings can mask fuel gas odor.
- The odorant in propane (LP) gas and natural gas is colorless and the intensity of its odor can fade under some circumstances.
- If there is an underground leak, the movement of gas through the soil can filter the odorant.
- Propane (LP) gas odor may differ in intensity at different levels. Since Propane (LP) gas is heavier than air, there may be more odor at lower levels.
- Always be sensitive to the slightest gas odor. If you continue to detect any gas odor, no matter how small, treat it as a serious leak. Immediately go into action as discussed previously.
- **ATTENTION - CRITICAL POINTS TO REMEMBER!**
- Propane (LP) gas has a distinctive odor. Learn to recognize these odors. (Reference Fuel Gas Odor and Odor Fading sections above.)
- Even If you are not properly trained in the service and repair of the heater, ALWAYS be consciously aware of the odors of propane (LP) gas and natural gas.
- If you have not been properly trained in the repair and service of propane (LP) gas then do not attempt to light the heater, perform service or repairs, or make any adjustments to the heater on the propane (LP) gas fuel system.
- A periodic sniff test around the heater or at the heater's joints; i.e. hose, connections, etc., is a good safety practice under any conditions. If you smell even a small amount of gas, CONTACT YOUR FUEL GAS SUPPLIER IMMEDIATELY. DO NOT WAIT!

## **ASSEMBLY**

**CAUTION:** NEVER IGNITE AND / OR RUN THIS HEATER UNLESS THE SHELLS ARE FULLY EXTENDED AND LOCKED INTO POSITION.

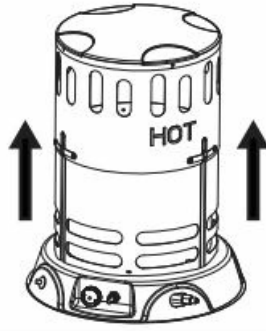
## **STEP 1**

- Remove the heater from the packaging. To protect your hands, put on gloves before lifting the outer shell. Never grasp bare metal without gloves.



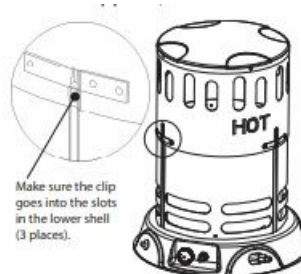
## STEP 2

- Lift the outer shell straight up. Care must be taken to protect hands during lift.



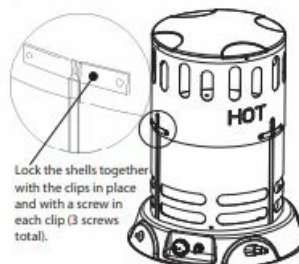
## STEP 3

- Lift the outer shell until all three clips engage slots located in the lower shell. When this happens, the screw holes will line up.



## STEP 4

- Lock the clip into place with 3 screws as shown. The heater must not be operated unless the outer shell is properly extended and fully locked into place.



## OPERATING INSTRUCTIONS

### PREPARING FOR OPERATION

1. Extend the shell fully and lock it into place as shown in the enclosed instructions sheet before lighting or operating the heater.
2. Check the heater for possible shipping damage. If any is found, immediately notify the factory.
3. Follow all of the safety and operating precautions.
4. Connect the POL fitting of the hose and regulator assembly to the propane cylinder by rotating the POL nut counterclockwise into the propane cylinder's valve outlet and securely tightening it with a wrench.
5. Connect the hose to the heater.
6. Securely tighten all gas connections.
7. Open the cylinder's gas valve and check all gas connections with a soap and water solution. **DO NOT USE A FLAME.**

## **STARTING THE HF80C**

1. **WARNING:** BEFORE LIGHTING PILOT, turn the main burner valve (turn knob fully clockwise) to low/light position.
2. Fully open the valve on the propane cylinder and wait 15 seconds before Step 3.
3. Push the knob in and hold for 5 seconds, allowing gas to emit from the burner orifice.
4. Rotate the knob counterclockwise until the piezo igniter clicks. Continue to rotate and activate the igniter until the burner lights.
5. Once the burner lights hold the knob in, on the low position for 30 seconds. Then release. The burner should stay lit. If it does not repeat steps 4 & 5 until the burner stays lit.
6. Turn the main burner valve to regulate heat output.

## **STARTING THE HF200C**

1. **WARNING:** BEFORE LIGHTING PILOT, turn the main burner valve (turn knob fully clockwise) to low/light position.
2. Fully open the valve on the propane cylinder and wait 15 seconds before Step 3.
3. Depress the red button on the safety pilot valve (to the right of the variable valve knob) admitting gas to the pilot. Then push and release the ignition button (red button to the right of the variable valve knob) until the pilot lights.
4. When the pilot lights, continue to hold the button depressed for 30 seconds, then release to light the main burner.
5. If the pilot goes out, wait 5 minutes and repeat the lighting procedure.
6. Turn the main burner valve to regulate heat output.

## **STOP (ALL UNITS)**

1. Securely close the valve on the propane cylinder.
2. Continue to operate the heater until all fuel in the hose has burned.
3. Turn the main burner valve to the lo/light position.

## **RESTART AFTER SAFETY SHUTDOWN**

1. Securely close the valve at the propane cylinder.
2. Wait 5 minutes.
3. Restart following the “Start” procedure for your model.

## **MAINTENANCE & STORAGE**

1. The heater should be inspected before each use, and at least annually by a qualified person.
2. Before each use, check the soft “O” ring seat at the bullnose of the POL fitting. If the “O” ring is cut, scuffed, or otherwise damaged, replace it.
3. Turn off the gas at the LP gas supply cylinder(s) when the heater is not in use.
4. When the heater is to be stored indoors, the connection between the LP-gas supply cylinder(s) and the heater must be disconnected and the cylinder(s) removed from the heater and stored out of doors and under Chapter 5 of the standard for Storage and Handling of Liquefied Petroleum Gases ANSI/NFPA 58 and CSA B149.1, Natural Gas and Propane Installation Code.

## **SERVICING**

A hazardous condition may result if a heater is used that has been modified or is not functioning properly.

### **When the heater is working properly:**

- The flame is contained within the heater.
- The flame is essentially yellow with some blue at the base of the flame adjacent to the burner.
- There is no strong disagreeable odor, eye burning, or other physical discomfort.
- There is no smoke or soot internal or external to the heater.
- There are no unplanned or unexplained shutdowns of the heater.
- The parts lists and exploded view show the heater as it was constructed. Do not use a heater which is different from that shown. In this regard, use only the hose, regulator, and cylinder connection fitting (called a POL fitting) supplied with the heater.
- **IMPORTANT** Match the color stripe on the hang tag attached to the hose assembly with the color on the label located near the propane inlet fitting on the heater. Do not use alternates. For this heater, the regulator must be set as shown in the “specifications”. If there is any uncertainty about the regulator setting, have it checked? A heater which is not working right must be repaired, but only by a trained, experienced service person. In-warranty products will be repaired with no charge for either parts or labor. Please include a brief statement indicating the date, place of purchase, the nature of the problem, and proof of purchase. Out-of-warranty products will be repaired with a charge for parts and labor.

## **SIZE AND CAPACITY OF PROPANE CYLINDERS REQUIRED**

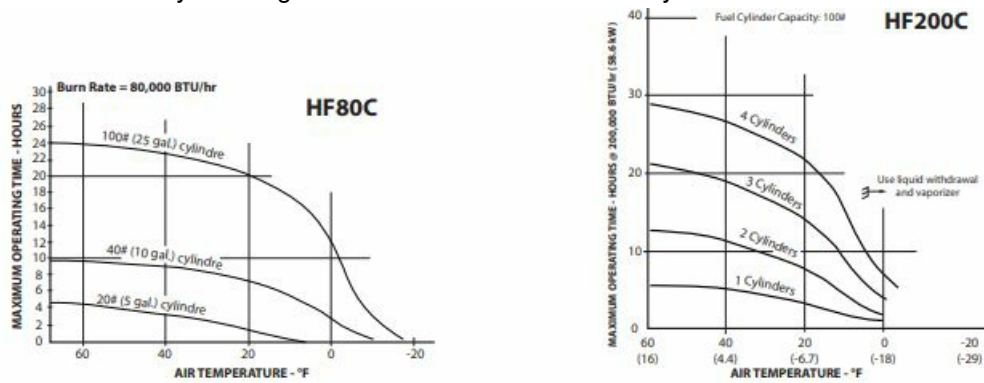
- The following charts show the approximate size of the cylinder required for these heaters.

### **To use the chart:**

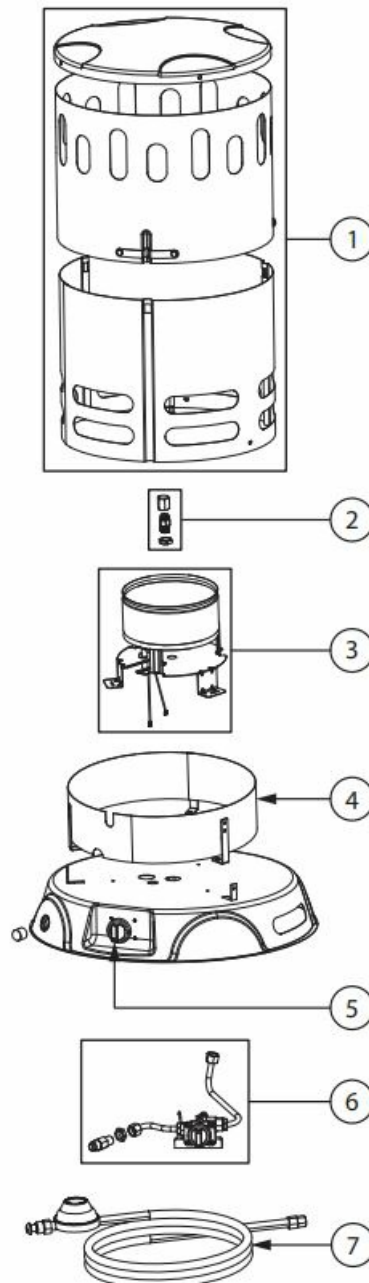
1. Select the lowest air temperature expected (at the bottom of the chart).

2. Move straight up to the time of operation desired (left side of the chart).
3. Read the cylinder size required.

All heaters should have: Full cylinders good air circulation no frost on cylinders



## HF80C PARTS LIST

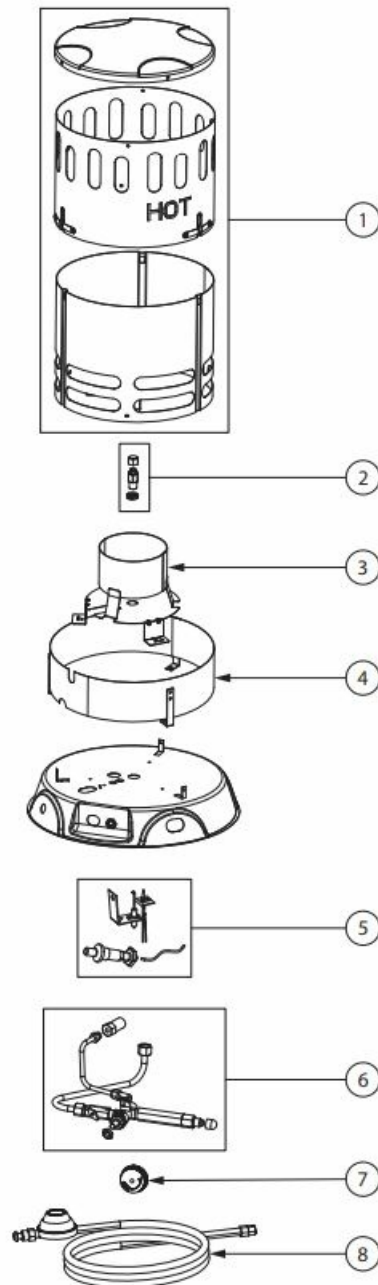


Key	Part #	Description	Qty
1	893993	Combustion Chamber Assembly	1
2	81378	Burner Orifice Assembly	1
3	893994	Burner Cone Assembly	1
4	893998	Combustion Chamber Ring	1
5	893991	Control Knob	1
6	81380	Valve and Gas Assembly	1
7	81376	Hose & Regulator Assembly 10'	1

- TO MAINTAIN WARRANTY, COMPONENTS MUST BE REPLACED USING ORIGINAL MANUFACTURER PARTS PURCHASED THROUGH YOUR DEALER OR DIRECTLY FROM THE APPLIANCE MANUFACTURER.
- USE OF THIRD-PARTY COMPONENTS WILL VOID THE WARRANTY.
- **WARNING:** Never leave the heater unattended while operating. Disconnect the heater from its power source when not in use.

#### HF200C PARTS LIST

Key	Part #	Description	Qty
1	893996	Combustion Chamber Assembly	1
2	81379	Burner Orifice Assembly	1
3	893997	Burner Cone	1
4	893998	Combustion Chamber Ring	1
5	81382	Ignitor/Piezo Assembly	1
6	81381	Valve and Gas Assembly	1
7	893992	Control Knob	1
8	81377	Hose & Regulator Assembly 10'	1



## SERVICE RECORD

It is recommended that this unit is serviced regularly and that the appropriate Service Interval Record is completed.

### Service Provider:

Before completing the appropriate Service Record below, please ensure you have carried out the service as described in the manufacturer's instructions. Always use the manufacturer's specified spare part when replacement is necessary.

<p>Service 01                      Date: _____</p> <p>Engineer Name: _____</p> <p>License No.: _____</p> <p>Company: _____</p> <p>Telephone No.: _____</p> <p>Unit Inspected: <input type="checkbox"/> Check Integrity Of Orifice And Gas Ports  <input type="checkbox"/> Check Gas Lines For Wear Or Leaks</p> <p>Items Replaced: _____</p>	<p>Service 02                      Date: _____</p> <p>Engineer Name: _____</p> <p>License No.: _____</p> <p>Company: _____</p> <p>Telephone No.: _____</p> <p>Unit Inspected: <input type="checkbox"/> Check Integrity Of Orifice And Gas Ports  <input type="checkbox"/> Check Gas Lines For Wear Or Leaks</p> <p>Items Replaced: _____</p>
<p>Service 03                      Date: _____</p> <p>Engineer Name: _____</p> <p>License No.: _____</p> <p>Company: _____</p> <p>Telephone No.: _____</p> <p>Unit Inspected: <input type="checkbox"/> Check Integrity Of Orifice And Gas Ports  <input type="checkbox"/> Check Gas Lines For Wear Or Leaks</p> <p>Items Replaced: _____</p>	<p>Service 04                      Date: _____</p> <p>Engineer Name: _____</p> <p>License No.: _____</p> <p>Company: _____</p> <p>Telephone No.: _____</p> <p>Unit Inspected: <input type="checkbox"/> Check Integrity Of Orifice And Gas Ports  <input type="checkbox"/> Check Gas Lines For Wear Or Leaks</p> <p>Items Replaced: _____</p>
<p>Service 05                      Date: _____</p> <p>Engineer Name: _____</p> <p>License No.: _____</p> <p>Company: _____</p> <p>Telephone No.: _____</p> <p>Unit Inspected: <input type="checkbox"/> Check Integrity Of Orifice And Gas Ports  <input type="checkbox"/> Check Gas Lines For Wear Or Leaks</p> <p>Items Replaced: _____</p>	<p>Service 06                      Date: _____</p> <p>Engineer Name: _____</p> <p>License No.: _____</p> <p>Company: _____</p> <p>Telephone No.: _____</p> <p>Unit Inspected: <input type="checkbox"/> Check Integrity Of Orifice And Gas Ports  <input type="checkbox"/> Check Gas Lines For Wear Or Leaks</p> <p>Items Replaced: _____</p>

## LIMITED WARRANTY

- United States Stove Company warrants this product, to the original retail purchaser only, to be free from defects in material and workmanship for one (1) year from the date of the initial purchase as evidenced on an invoice, canceled check, sales receipt, etc. In the event of a defect, this Limited Warranty shall be limited to the repair or replacement of parts, that prove defective under normal use and service within the limited warranty period, and which United States Stove Company deems at its reasonable discretion.
- THE LIMITED WARRANTY SET FORTH HEREIN IS THE SOLE WARRANTY PROVIDED TO THE PURCHASER AND IS INSTEAD OF ALL OTHER WARRANTIES AND REPRESENTATIONS, EXPRESS OR IMPLIED. UNITED STATES STOVE COMPANY MAKES NO REPRESENTATIONS OR WARRANTIES WHATSOEVER, EXPRESS OR IMPLIED, to THE PRODUCT, OTHER THAN (i) THE LIMITED WARRANTY ABOVE, AND (ii) ANY IMPLIED WARRANTIES IMPOSED BY APPLICABLE LAW WHICH CANNOT BE WAIVED OR DISCLAIMED UNDER APPLICABLE LAW. ALL OTHER WARRANTIES OF ANY KIND, INCLUDING WITHOUT LIMITATION IMPLIED WARRANTIES OF MERCHANTABILITY AND FITNESS FOR A PARTICULAR PURPOSE, ARE HEREBY DISCLAIMED AND EXCLUDED TO THE FULLEST EXTENT NOT PROHIBITED BY APPLICABLE LAW. This Limited Warranty gives the purchaser specific legal rights; a purchaser may have other rights depending upon where he or she resides. Some states do not allow the



exclusion or limitation of special, incidental, or consequential damages, or state law may affect the duration of limitations, so the above exclusion and limitations may not be applicable.

- **OTHER LIMITATIONS:** United States Stove Company disclaims all other warranties for products that are purchased from sellers other than authorized retailers or distributors. This product must be properly installed, maintained, and operated under the instructions provided herein. Furthermore, the United States Stove Company requires reasonable proof of the date of purchase from an authorized retailer or distributor. This Limited Warranty does not cover any operational failures or difficulties due to normal use and wear and tear, accident, abuse, misuse, alteration, misapplication, improper installation, or improper maintenance or service by you or any third party. Failure to perform routine maintenance on the product, shipping damage, damage related to animals, and damage due to weather are not covered under this Limited Warranty. In addition, this Limited Warranty does not cover damage to the finish on the product, such as scratches, dents, discoloration, rust, or other weather damage.
  - This warranty does not apply to products purchased for rental use. United States Stove Company assumes no responsibility for any defects caused by third parties. United States Stove Company does not authorize any person or company to assume for it any other obligation or liability in connection with the sale, installation, use, removal, return, or replacement of its products, and no such representations are binding on United States Stove Company.
  - **CLAIM PROCEDURE:** All transportation costs for the return of the damaged product or parts will be the responsibility of the purchaser. Upon receipt of the product, United States Stove Company will examine it and determine if the product contains a defect. United States Stove Company will repair or replace and return the item, freight pre-paid. If United States Stove Company finds the item to be in normal operating condition, or not defective, the item will be returned to freight collection. Purchaser shall specify the model number(s) and serial number(s) of any product(s) when making any claims with United States Stove Company. Please use the following to identify your product:
    - **Model #:** \_\_\_\_\_
    - **Serial #:** \_\_\_\_\_
    - **WARNING:** Never leave the heater unattended while operating.
    - Disconnect the heater from its power source when not in use.
    - **United States Stove Company**
    - **227 Industrial Park Road, South Pittsburg, TN PH: (800) 750-2723**
    - [www.usstove.com](http://www.usstove.com)
-



[HEATFAST HF80C Series Convection Construction Heater](#) [pdf] Owner's Manual  
HF80C, HF200C, HF80C Series Convection Construction Heater, HF80C Series, Convection C  
onstruction Heater, Construction, Heater

## References

- [US Stove Company](#) | [Wood Stoves](#) | [Gas Stoves](#) | [Furnaces](#) | [Outdoor Living](#)
- [User Manual](#)

Manuals+.