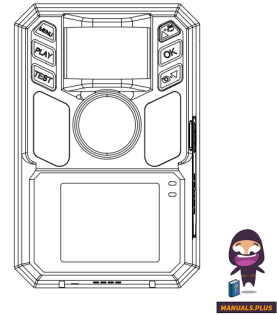


HDKing
HC30C-W Hunting
Camera



HDKing HC30C-W Hunting Camera User Manual

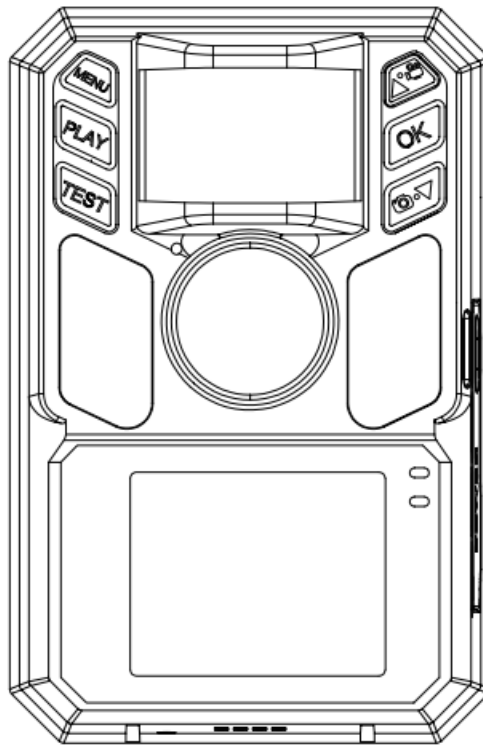
[Home](#) » [HDKING](#) » HDKing HC30C-W Hunting Camera User Manual 

Contents

- 1 HDKing HC30C-W Hunting Camera
- 2 Accessory List
- 3 Quick Start Guide
- 4 Function settings
- 5 Video/Photo mode
- 6 Playback/Delete Mode
- 7 Button Function Introduction
- 8 System menu settings
- 9 APP download and installation
- 10 WiFi connection
- 11 Installation and positioning
- 12 Specifications
- 13 FAQ
- 14 Documents / Resources
 - 14.1 References



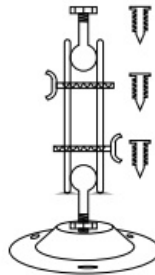
HDKing HC30C-W Hunting Camera



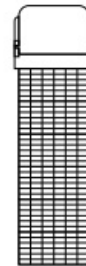
Accessory List



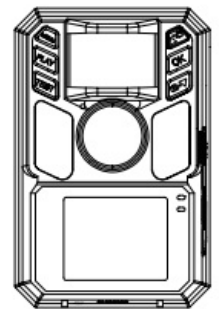
1



2



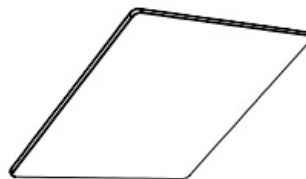
3



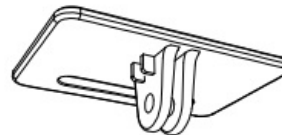
4



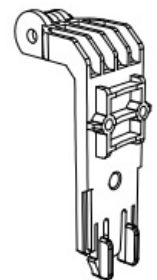
5



6



7



8

1. 1 x USB cable
2. 1 x bracket and 3 screws
3. 1 x mounting strap
4. 1 x hunting camera
5. 1 x product manual
6. 1 x Solar Panel
7. 1 x Solar support panel

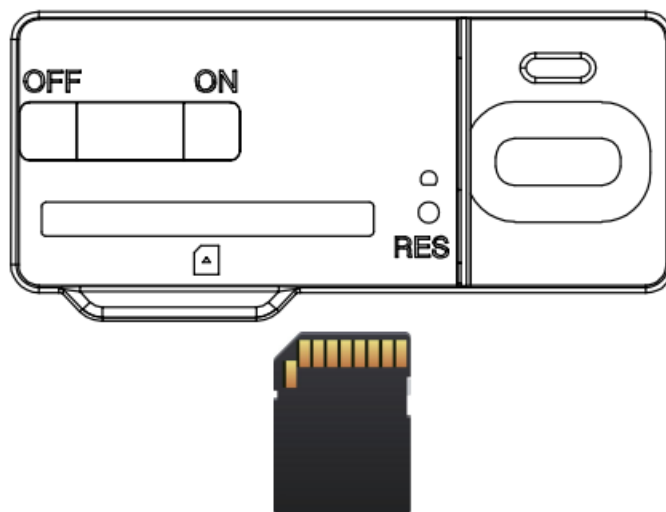
How hunting cameras work

- The hunting camera is equipped with a low-power PIR sensor and uses local storage. It senses the infrared signals of animals or human bodies through the pyroelectric infrared sensor, automatically triggering the camera to take pictures and record videos and save them on the local device.
- When an animal enters the monitoring range of the hunting camera, the hunting camera starts shooting through the infrared sensor and saves the shooting file. When the animal leaves the monitoring range of the hunting camera, the camera is in a dormant standby state. When the animal enters the monitoring range of the camera again, the camera starts shooting again.

Quick Start Guide

1. SD Card

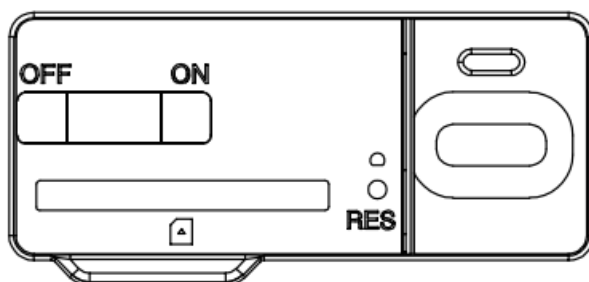
Before operating the camera, please insert (without powering on the camera) a high-speed SD card of Class 10 or higher. Insert the SD card in the correct direction as marked on the camera. Please connect the new card to a computer to format it for the first time.



2. OFF-ON mode

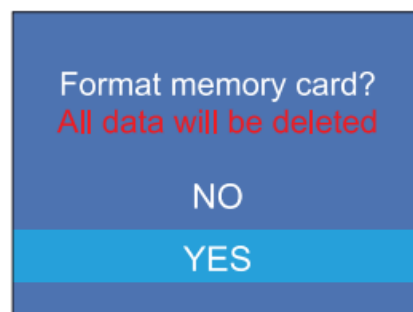
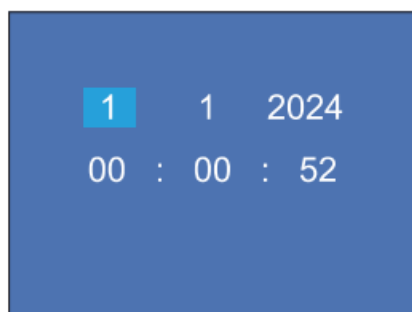
Turn on the hunting camera and flip the switch from OFF to ON. The camera will turn on and the LCD will display the preview interface.

Note: The camera will not automatically take photos or record videos in this mode. It is recommended to fully charge the battery before using it.



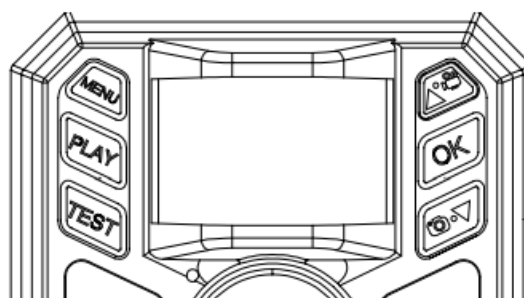
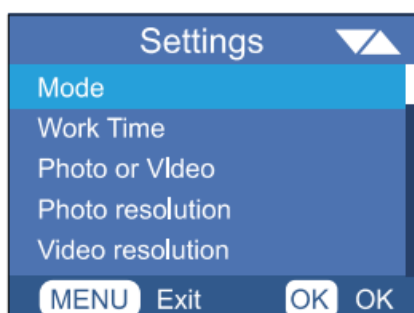
3. Turn on camera guide

After turning on the camera, use the up and down buttons together with the OK button to complete the language setting, time and date setting, and format the SD card to complete the boot interface.

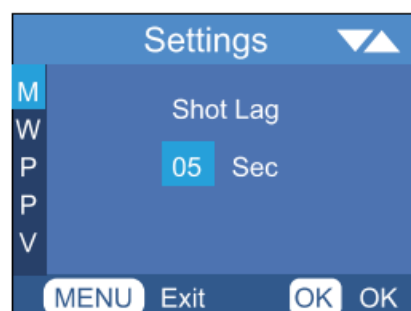
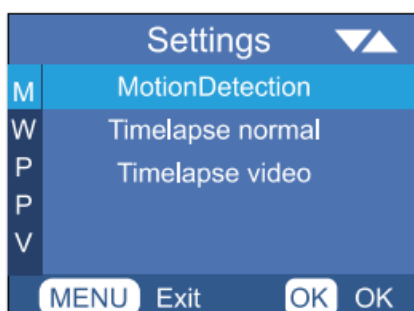


Function settings

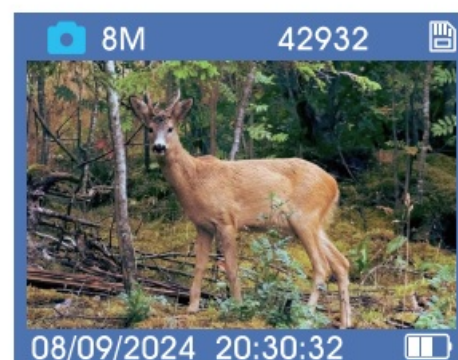
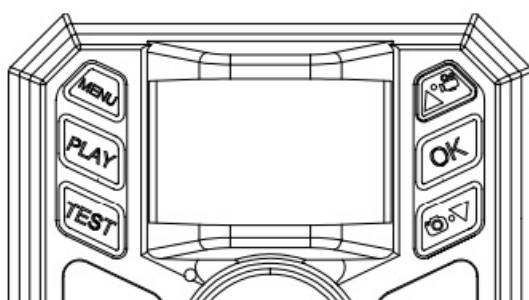
1. When the switch is toggled from OFF to ON, the camera turns on, and the LCD pops up the menu by pressing the MENU button. Press the up/down button to select the menu to be adjusted and set it, press the OK button to save the setting, and press the MENU button again to exit the menu setting.



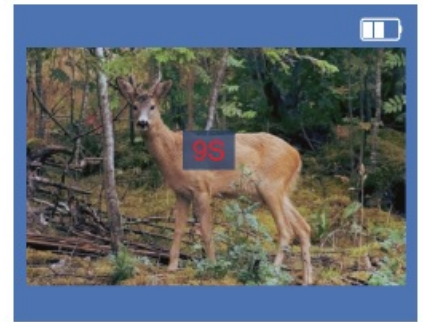
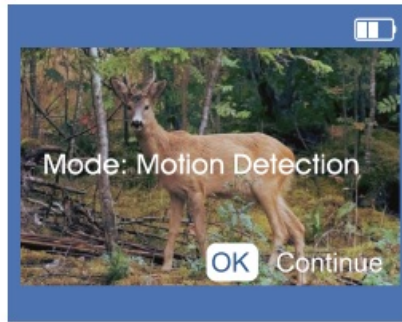
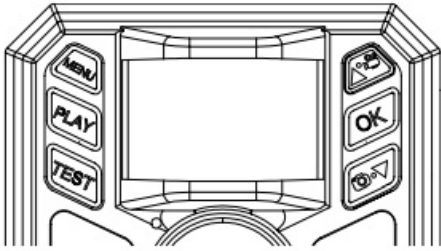
2. Enter the menu and select motion detection to set the detection interval as required.



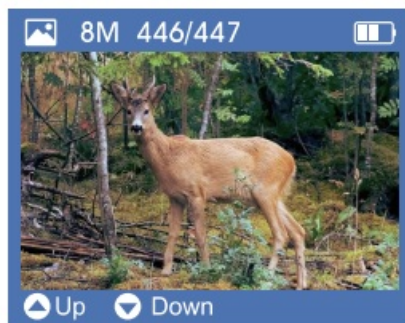
3. Press the MENU button on the LCD to exit the setup menu and enter the preview interface.



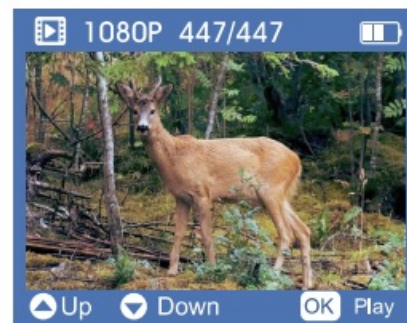
4. When you have completed all the settings in preview mode and determined the installation location, press the TEST button directly. The screen display will turn off after 10 seconds and the camera will enter monitoring mode. If you need to reset the parameters, press the TEST button again to wake up the camera. The TEST-hunting camera enters monitoring working mode.



5. When querying the captured files, press the TEST button again to wake up the camera, and press the “PLAY” button to view the captured pictures and videos.

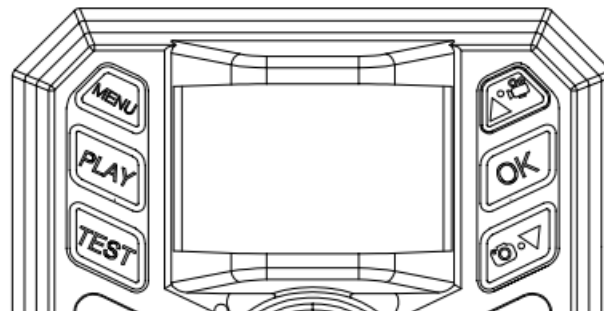


Photo



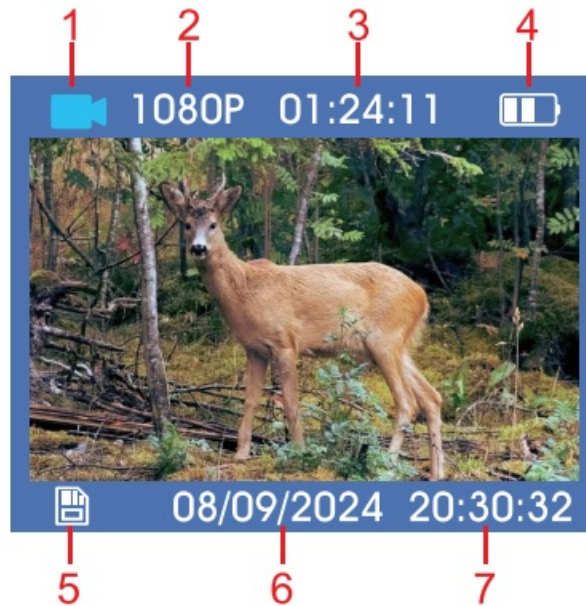
Video

6. Press the MENU button on the LCD to exit the setup playback and enter the preview interface. You can press the TEST button to enter the monitoring mode again.



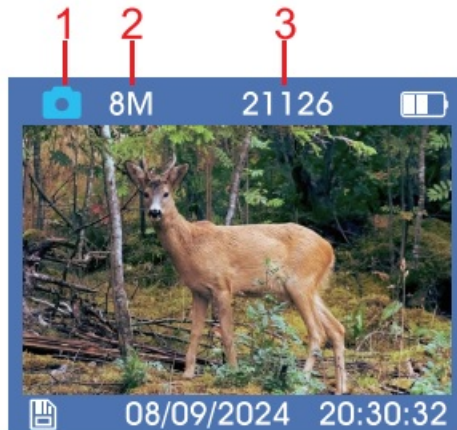
Video/Photo mode

Video recording interface



1. Video recording mode
2. Video resolution
3. Remaining recording time
4. Battery
5. SD card
6. Current date
7. Current time

Photo interface introduction



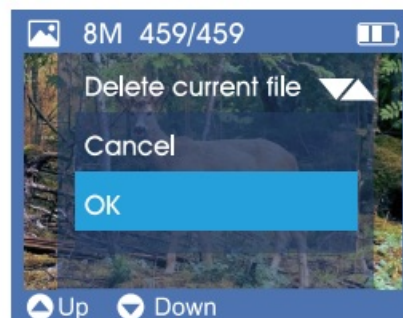
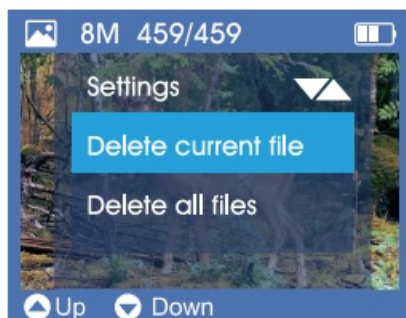
1. Photo mode
2. Photo resolution
3. Number of photos remaining

Playback/Delete Mode

Remove the camera from the installation location, press the TEST button to wake up the device, and press the PLAY button to enter the playback mode. Press the up/down button to view the captured pictures or videos. When playing back video files, press the OK button to play or pause. Press the MENU button to return to the standby mode.

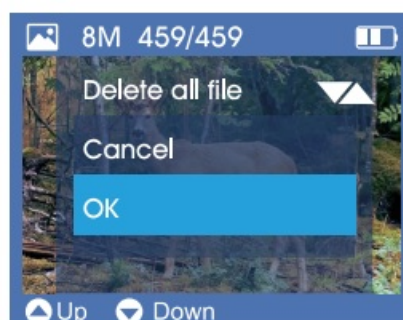
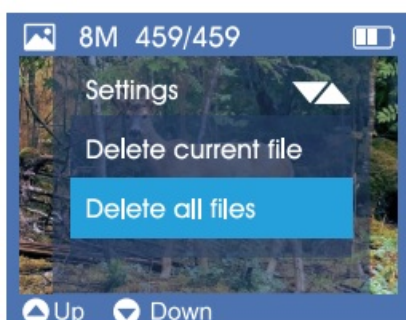
1. Delete the current file

Use this function to delete the currently selected picture or video in the camera memory card. In playback mode, press the MENU button, select “Delete Current”, and press the OK button to confirm.

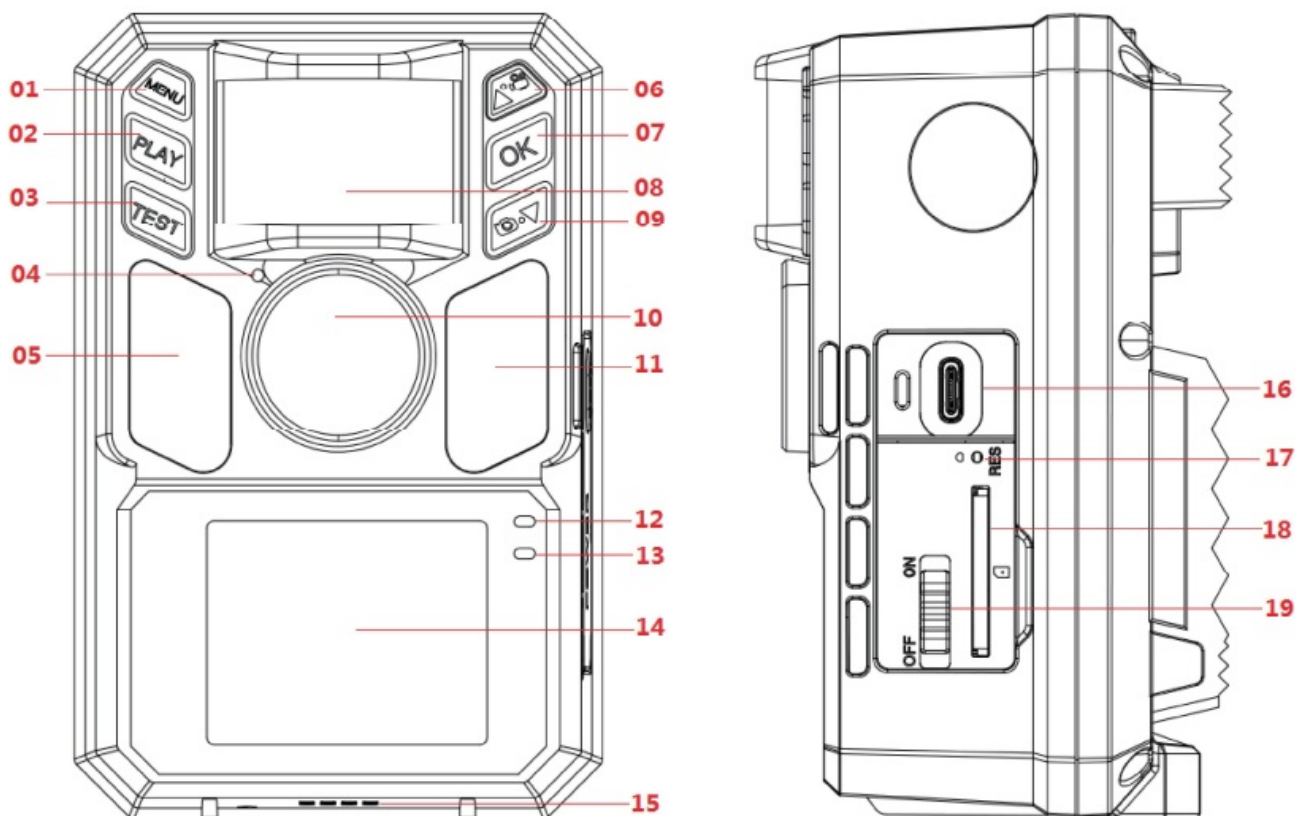


2. Delete all files

Use this function to delete all pictures or videos in the camera memory card. In playback mode, press the MENU button, select “Delete All”, and press the OK button to confirm.



Button Function Introduction



1. MENU Button
2. PLAY Button

3. START Button
4. Microphone
5. Right night vision light
6. Up button/recording
7. OK Button
8. PIR Lens
9. Down Button/Photo
10. Lens
11. Left night vision light
12. PIR Indicator Lights
13. WIFI Indicator light
14. Display
15. Speaker
16. TYPE-C interface
17. Reset button
18. SD card slot
19. OFF/ON switch

Button Definition

MENU Button	<p>1. On the preview interface, short press the MENU button to open and exit the settings menu.</p> <p>2. On the playback interface, short press the MENU button to enter the file deletion and protection interface.</p>
PLAY Button	In the preview interface, short press the PLAY button to enter the playback interface.
TEST Button	Short press on the preview interface to enter monitoring mode, press TEST again to exit monitoring mode.
Up button/ recording	<p>1. Short press on the preview interface to switch to video recording mode.</p> <p>2. In the setup and playback modes, short press the up button to scroll up.</p>
OK Button	<p>1. In the settings menu, short press OK to save the settings. 2. In playback mode, short press to play/pause video.</p> <p>On the preview interface, short press the OK button to take photos/videos.</p>
Down Button/ Photo	<p>1. Short press on the preview interface to switch to photo mode.</p> <p>In the setup and playback modes, short press the button to scroll down.</p>

System menu settings

1. Mode

- Motion detection: After the camera is triggered to shoot, the camera will not take photos or videos within the set interval. This can prevent the SD card from being filled with duplicate files.
- Timed photography: Set the time interval to record the entire flowering process. For example, if you want to observe the blooming process of a plant, you can use this function. Note: When this function is turned on, the PIR sensor does not work.
- Time-lapse video: used to record sunrise, sunset and other scenes that require long recording time but little scene change, so as to save memory space and present better results. Note: When this function is turned on, the PIR sensor does not work.

2. Work Time

Turn off/on, press the “OK” button, and then select “On” to set the start time and end time. After setting, the camera will only work during the set time every day. Outside this time period, the camera is in standby mode. The camera will not be triggered and will not take any photos or videos.

3. Photo or Video

PhotoNideo/Photo+Video, when motion is detected, you can choose to take a photo or video. When Photo+Video mode is selected, the camera first takes a certain number of photos and then takes a video.

4. Photo Resolution

48M, 42M, 36M, 32M, 24M, 20M, 16M, BM, 4M, 2M. You can select the desired photo resolution. The higher the resolution, the better the photo quality, but the larger the file, the more space on the memory card.

5. Video Resolution

1080P/720P, select the desired video resolution. The higher the resolution you select, the larger the file size will be and the more space you will need on the memory card.

6. Photo Burst

1 /2/3/4/5 photos, you can select the desired number of continuous shots, which is the number of photos the camera will take in sequence each time it is triggered.

7. Video Length

5 seconds – 3 minutes, the default is 10 seconds. This is the duration of a single recording when the device is in ON/TEST mode.

Audio Recording

The default setting is “On”. When “Off” is selected, the recorded video will be without sound.

8. Detection Delay

5 seconds – 1 hour, after the camera is triggered to shoot, the camera will not take photos/videos within the set interval. This can prevent the SD card from being filled with duplicate files.

9. PIR Sensitivity

Low/Medium/High, the sensitivity of the PIR sensor, will affect the sensitivity according to the ambient temperature. When the ambient temperature is high, the “High” setting is more suitable when you want to capture animals farther away, while the “Medium”/“Low” settings are more suitable in cold weather.

10. Motion Titter

Prevent accidental shooting after it is turned on. After being triggered by PIR, the video algorithm is used to analyze whether there is a moving object in the picture.

11. Motion Test

You can test whether the PIR is working properly in the setting mode.

12. **Fill Light Distance**

There are three options (Far, Medium, Near)

13. **Camera Name**

Can modify the camera name

14. **Wi-Fi LED**

It is on by default. The indicator light flashes during the WiFi connection process, and you can see the current status of the camera.

15. **Date & Time**

Year, month, day/hour, minute, second, you can set the current date and time

16. **Date Format**

You can select the required date format, DD-MM-YY/MM-DD-YY/MM-DD-YY

17. **Time Format**

12H/24H, you can set the corresponding format.

18. **Date Stamp**

Off/On, you can choose to turn on/off the time display on the photo/video during playback.

19. **Loop Record**

You can choose to turn it on or off. If it is on, when the memory card is full, the previous files will be deleted and the video will continue. If it is off, when the memory card is full, the video will stop.

20. **Beep Sound**

The default setting is "On". When "Off" is selected, there is no sound when pressing buttons.

21. **Memory Card Format**

Format the memory card. Select "Yes" to delete all data. After the camera formats the SD card, all files will be deleted.

Note: Please format the SD card on this camera for the first use.

22. **Language**

English, Deutsch, Francais, Espanol, Nederlands, Italiano, Polski, iffi1*\$3t, E3 *ig, PycCKLt1~

23. **Password Protection**

You can set a 4-digit power-on password, which can be set between 0 and 9, to protect your camera. If you forget the password, press and hold the Up button and the OK button to turn on the camera, and the camera will be unlocked.

24. **Factory Reset**

Restore factory settings, select "Yes" to restore the camera system to factory settings.

25. **Version Info**

You can view the current firmware version and Bluetooth version of the camera

APP download and installation

1. Method 1: Search for "TrailCam Go" on Google Play for Android phones or Apple Store for iOS phones, download and install it.
2. Method 2: Please use your Android or IOS phone to scan the QR code below to download the "TrailCam Go" APP.



WiFi connection

1. Turn the camera switch to ON mode, and turn on the Bluetooth and WiFi settings on your phone. Open the "Trail Cam Go" APP icon. When prompted for privacy permissions, confirm your consent and ensure that the APP is connected normally. (As shown in Figure 1)
2. Click "+" to add a device, select the device type: Wi-Fi camera, and make sure the camera is turned on and near you. (Figure 2).
3. If you want to connect a single camera, please click "Connect Camera". If you want to add multiple cameras, please click "Connect Other Cameras". Select the Bluetooth name you want to connect, and the device will automatically connect. As shown in (Figure 3).
4. During the connection process, you will be prompted to use a temporary WLAN network to connect to your device. Click "Connect". After the connection is successful, the camera name or location input interface will pop up. Please enter and save, and then enter the main page as shown. (Figure 4).
5. The camera enters the preview interface, click "Map" to find the location of the camera. Click "Camera List" and edit the location of each device. As shown in (Figure 5).
Note: Please make sure your location is turned on when using it. "TrailCam Go" needs permission to use location information, please click "Allow when using".
6. Return the camera to the home page, click the preview box in the upper right corner of the main interface to enter the camera status interface, where you can view information such as battery/storage/camera name, etc. (Figure 6).
7. Click the camera icon on the status page to enter the real-time monitoring screen, where you can take photos and record videos. (Figure 7).
8. Click on the gallery to view videos and photos, delete/share files, and the captured files are directly saved locally instead of in the camera's storage card. (Figure 8).
9. Click the setting icon to enter the parameter setting interface, where you can set the time, working mode, video/photo mode, etc. (Figure 9).

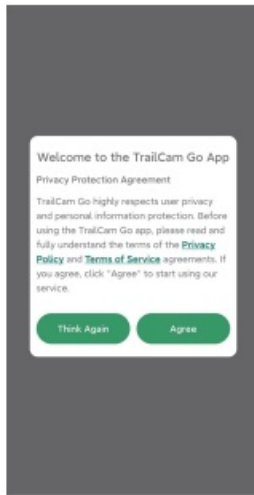


Figure 1

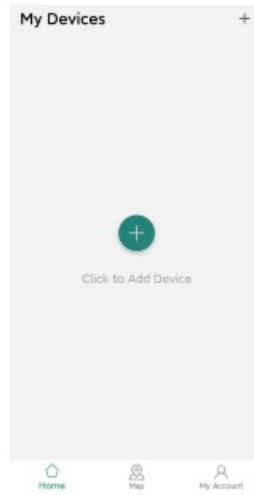


Figure 2



Figure 3

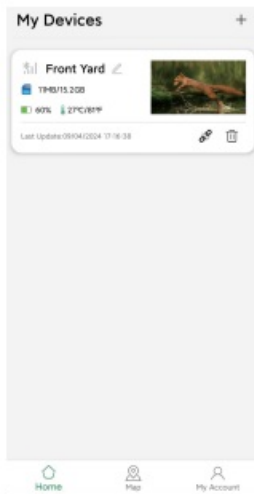


Figure 4



Figure 5



Figure 6

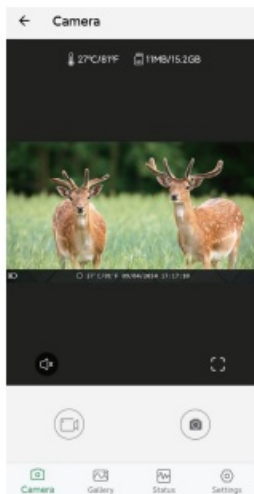


Figure 7



Figure 8

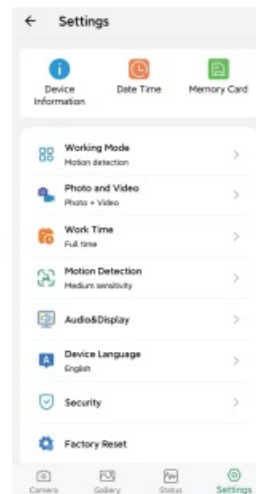
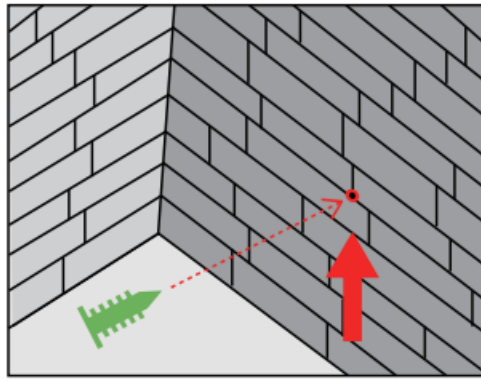


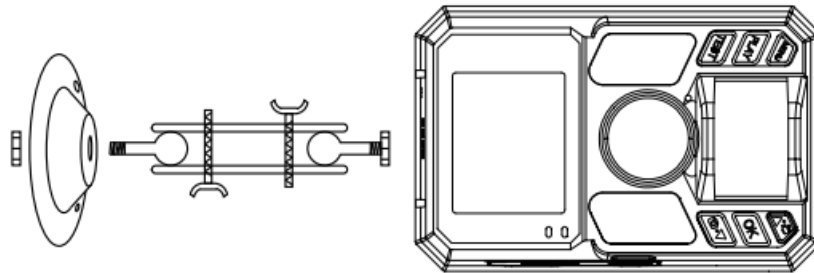
Figure 9

Installation and positioning

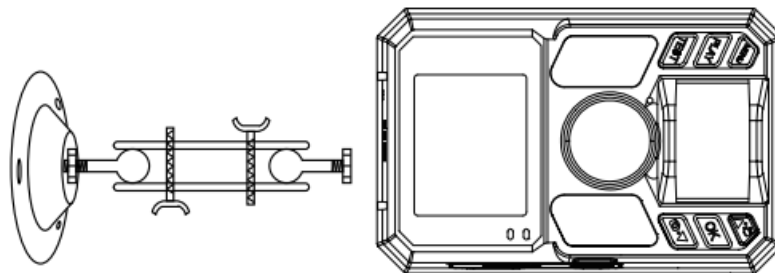
1. If you want to place the camera on the wall. Mark the mounting location with the help of a metal plate and make holes in the wall.
2. Place the green component into the hole.



3. Fasten the fixing kit as shown in the picture.

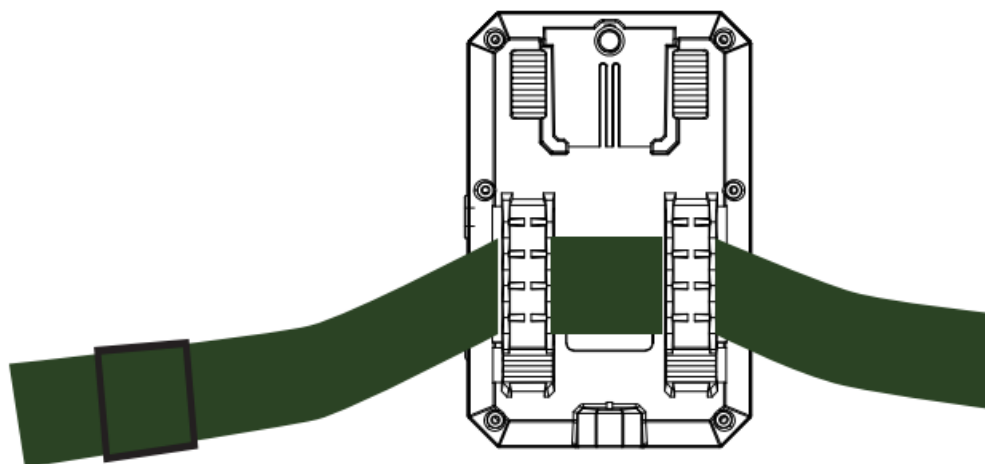


4. Place the camera in the location of your choice and secure it in the location of your choice.



5. If you want to put the camera in a tree.

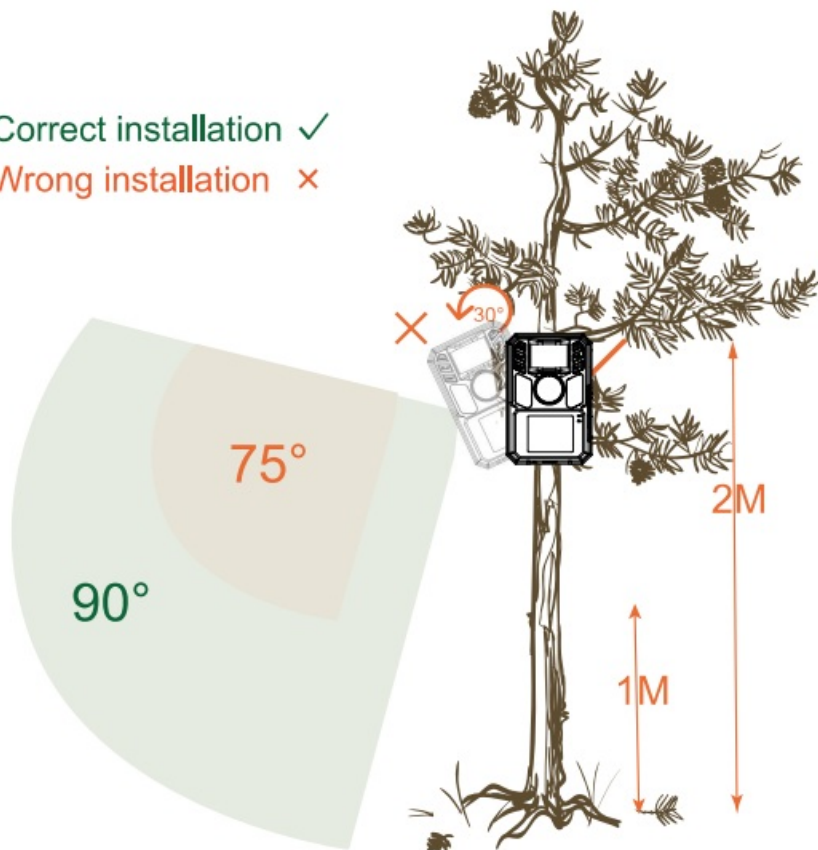
6. Pass the mounting strap through the bracket on the back of the camera. Tie it to the tree. Adjust the position of the camera.



7. If you are worried about the camera falling, you can also use the fixing kit together with the mounting strap to ensure that the camera cap is firmly fixed in the right position.

Correct installation ✓

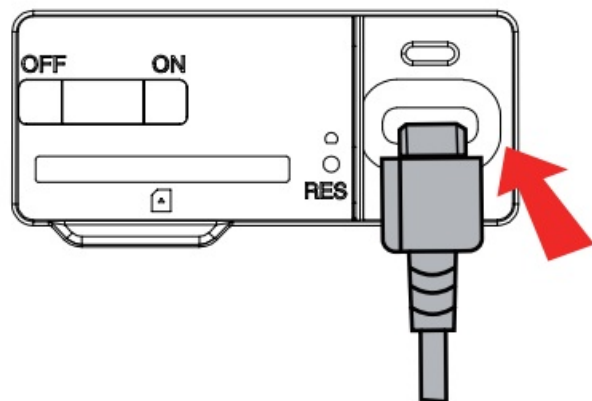
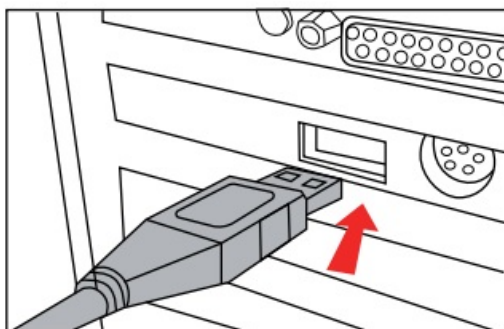
Wrong installation ✗



8. The height of the camera from the ground should be different according to the size of the animal being photographed. Generally, 1-2 meters is the best height.

USB connection and card reader use

1. In preview mode, connect the camera to the computer using a USB cable. The camera is automatically mounted on the computer and named "Removable Disk".
2. Double-click the device to detect the folder "DCIM".
3. You can copy or move photo and video files on your computer. Alternatively, you can insert the memory card into a card reader on your computer.



Specifications

Display	1.77 inch
Lens	FOV90
Photo resolution	48M 42M 36M 32M 24M 20M 16M BM 4M 2M
Video resolution	1080P 720P
Video Format	MP4
Photo Format	JPG
Language	English,Deutsch,Francais,Espanol Nederlands Italiano Polski m'.if:t\$X,Japanese PyccK
Memory Card	128GB
Wi-Fi/APP	2.4G/Trail Cam Go
USB	TYPE-C
DC Power Supply	5V/1.5A
Battery	Built-in
Microphone	Built-in
Speaker	Built-in
Operating temperature	-20·c to +60·c
Storage temperature	-30·c to +10·c
Product Size	114.8X75X67.5MM

FCC Warning

This device complies with part 15 of the FCC Rules. Operation is subject to the following two conditions:

1. This device may not cause harmful interference, and
2. this device must accept any interference received, including interference that may cause undesired operation.

Any Changes or modifications not expressly approved by the party responsible for compliance could void the user's authority to operate the equipment.

Note: This equipment has been tested and found to comply with the limits for a Class B digital device, pursuant to part 15 of the FCC Rules. These limits are designed to provide reasonable protection against harmful interference in a residential installation.

This equipment generates uses and can radiate radio frequency energy and, if not installed and used in accordance with the instructions, may cause harmful interference to radio communications. However, there is no guarantee that interference will not occur in a particular installation. If this equipment does cause harmful interference to radio or television reception, which can be determined by turning the equipment off and on, the user is encouraged to try to correct the interference by one or more of the following measures:

- Reorient or relocate the receiving antenna.
- Increase the separation between the equipment and receiver.
- Connect the equipment into an outlet on a circuit different from that to which the receiver is connected.

- Consult the dealer or an experienced radio/TV technician for help.

The device has been evaluated to meet general RF exposure requirement. The device can be used in portable exposure condition without restriction.

FAQ

1. Cannot turn on

Please check whether the device has power. You can try charging it for 15 minutes before turning it on.

2. The camera cannot take pictures

Please check whether the PIR protective film has been torn off; please check whether the camera installation position is within the effective range.

3. No pictures on SD card

It is recommended to use a common brand SD card; please confirm whether the SD card is formatted before installation.

4. Not connected to WiFi

Check whether the device is turned on; whether the WiFi is within effective distance; check whether the device is low on power.


Hunting cameras are useful during the day, but can't capture anything at night?

It is recommended to charge the camera before use. When the battery is low, the voltage output is not enough for night shooting.

What if I forget my camera password?

While turning on the camera, press and hold the Up button and the OK button. The camera will be unlocked.

Documents / Resources

<p>HC30C-W User Manual</p> 	<p>HDKing HC30C-W Hunting Camera [pdf] User Manual 2BNB3-HC30C-W, 2BNB3HC30CW, hc30c w, HC30C-W Hunting Camera, HC30C-W, Hunting Camera, Camera</p>
--	---

References

- [User Manual](#)

[Manuals+](#), [Privacy Policy](#)

This website is an independent publication and is neither affiliated with nor endorsed by any of the trademark owners. The "Bluetooth®" word mark and logos are registered trademarks owned by Bluetooth SIG, Inc. The "Wi-Fi®" word mark and logos are registered trademarks owned by the Wi-Fi Alliance. Any use of these marks on this website does not imply any affiliation with or endorsement.