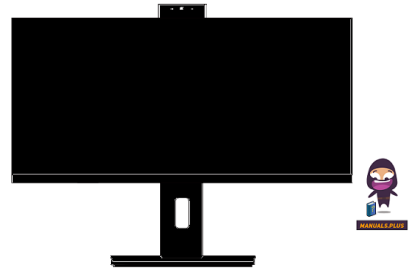


HB COMPUTERS
SLK
All In one
Computer



HB Computers SLK All In one Computer Owner's Manual

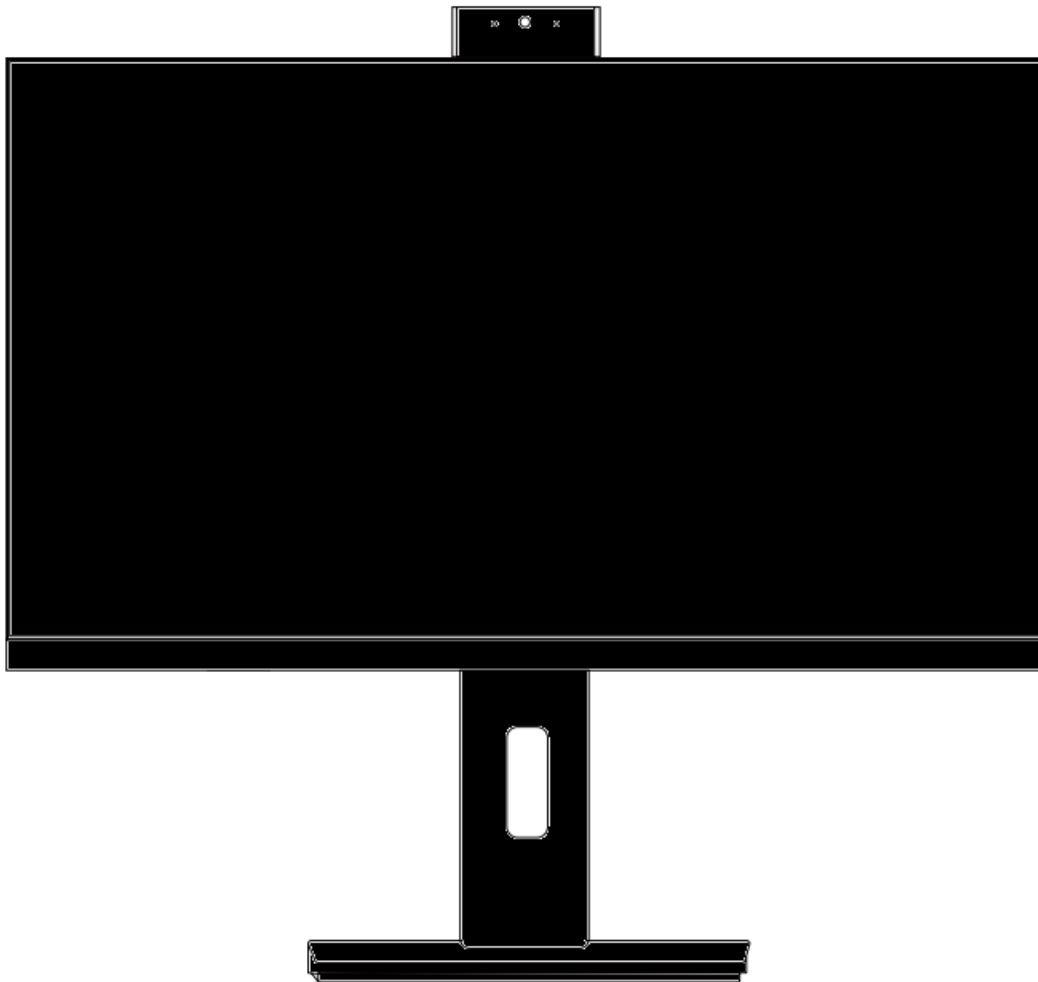
[Home](#) » [HB Computers](#) » HB Computers SLK All In one Computer Owner's Manual 

Contents

- 1 HB Computers SLK All In one Computer
- 2 Product Usage Instructions
- 3 FAQ
- 4 Precautions before Use
- 5 FCC STATEMENT
- 6 Product Overview Features
- 7 Know your product
- 8 Know your Screen
- 9 Using the Computer
- 10 Starting And Shutting the Computer
- 11 Screen Settings
- 12 Connect to a Wi-Fi network
- 13 User Interface
- 14 Menu bar
- 15 Operating Interface
- 16 To download new apps
- 17 Documents / Resources
 - 17.1 References

HB COMPUTERS

HB Computers SLK All In one Computer



Specifications

- Model: All-in-One
- Easy to use manual

Product Usage Instructions

Key Layout and Definitions

- Get familiar with the key layout and definitions in figures and words to enhance your user experience.

Precautions before Use

1. This product is suitable for use in non-tropic areas below 2,000 meters.
2. Avoid dropping or subjecting the device to strong impacts.
3. Avoid prolonged use in extreme temperature environments (too cold or too hot).

FAQ

- **Q:** Can this device be used in tropical areas?
 - **A:** No, this device is suitable for non-tropic areas below 2,000 meters.
- **Q:** What should I do if the device falls to the ground?

- **A:** Check for any physical damage and ensure the device is functioning properly before further use.
- **Q:** Can the device withstand extreme temperatures?
 - **A:** It is not recommended to use the device in environments with extreme temperatures as it may affect its performance.

Thank you for your choosing the new device

This guide serves to enable users to get to know and familiar with our product as soon as possible. Here we have made a brief introduction to the key layout and definitions in figures and words.

Precautions before Use

1. This production is suitable for use in non-tropic areas below 2,000 meters.
2. Prevent the device from falling to the ground or being strongly impacted otherwise.
3. Do not use it in the long term in any environment where the air is too cold, too hot (<35°C), too humid or with too much dust. Do not expose the Device to sunlight.
4. Avoid using it in the strong magnetic and strong static environment as much as possible.
5. Once any water or other liquid splashes onto the Device, close it immediately and do not use it until it dries out.
6. Do not clean the Device with any detergent containing chemical element or other liquid to avoid causing damage due to corrosion and becoming damp. If cleaning is really necessary, clean it with dry soft cloth tissue paper.
7. Our company shall not bear any and all responsibilities for loss or deletion of material inside the machine caused due to abnormal software and hardware operation, maintenance or any other accident.
8. Please back up your important material at any time to avoid loss.
9. Please do not disassemble the Device by yourself; otherwise you will lose the right to warranty.

FCC STATEMENT

This device complies with part 15 of the FCC Rules. Operation is subject to the following two conditions:

1. this device may not cause harmful interference
2. this device must accept any interference received, including interference that may cause undesired operation.

Any changes or modifications not expressly approved by the party responsible for compliance could void the user's authority to operate the equipment.

NOTE: This equipment has been tested and found to comply with the limits for a Class B digital device, pursuant to Part 15 of the FCC Rules. These limits are designed to provide reasonable protection against harmful interference in a residential installation. This equipment generates, uses and can radiate radio frequency energy and, if not installed and used in accordance with the instructions, may cause harmful interference to radio communications. However, there is no guarantee that interference will not occur in a particular installation.

If this equipment does cause harmful interference to radio or television reception, which can be determined by turning the equipment off and on, the user is encouraged to try to correct the interference by one or more of the following measures:

- Reorient or relocate the receiving antenna.

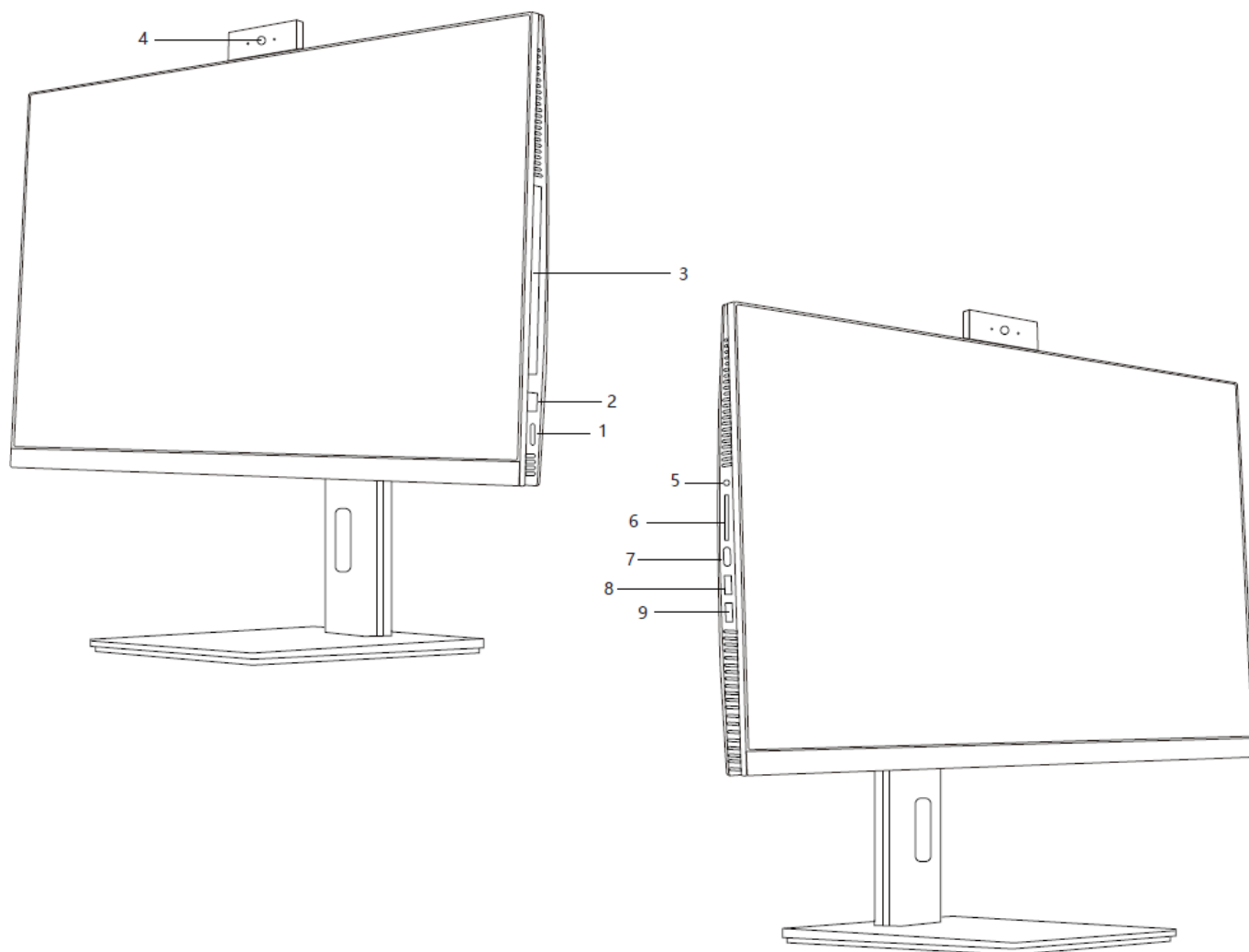
- Increase the separation between the equipment and receiver.
- Connect the equipment into an outlet on a circuit different from that to which the receiver is connected.
- Consult the dealer or an experienced radio/TV technician for help.

To maintain compliance with FCC's RF Exposure guidelines, This equipment should be installed and operated with minimum distance between 20cm the radiator your body: Use only the supplied antenna.

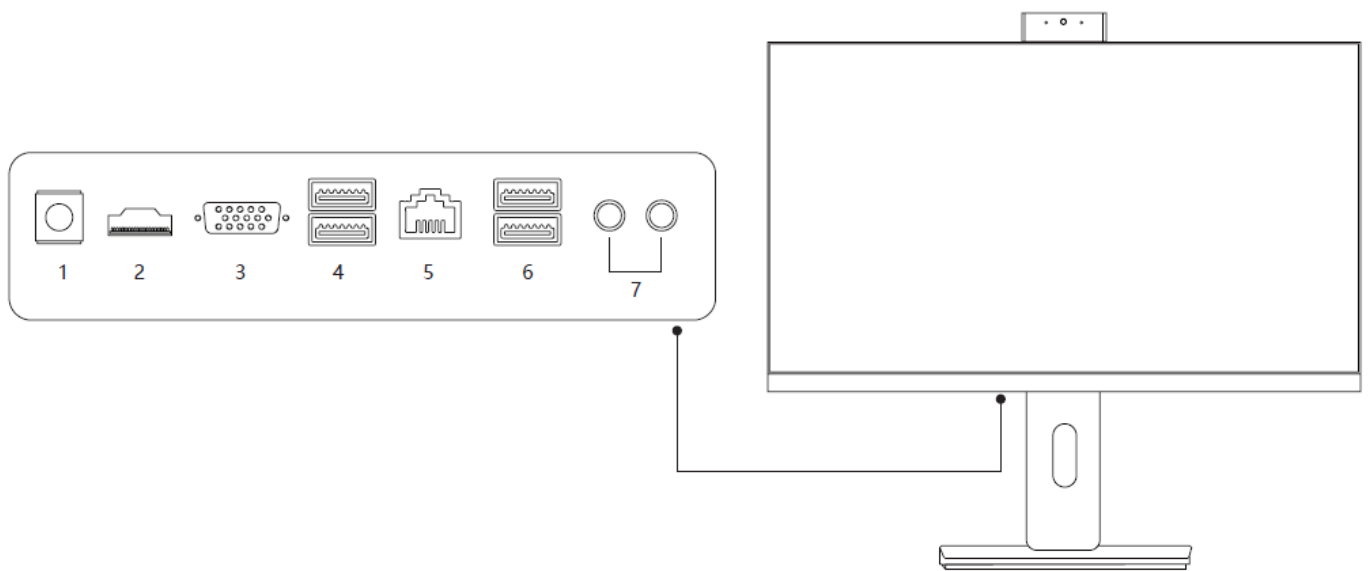
Product Overview Features

- **Browse the Web**
 - Visit your favourite websites
- **Check your e-mail**
 - Keep in touch with friends and family
- **Watch YouTube™ videos**
 - Browse the world's most popular video-sharing community
- **Connect to the Internet wirelessly**
 - High-speed Wi-Fi 802.11 ac/b/g/n networking
- **Enjoy your media library anywhere**
 - Portable powerhouse plays popular music, video, and photos.
- **Built-in camera**
- **Discover thousands of apps for Windows™**
 - Install games, applications and more via the installed Microsoft Store M

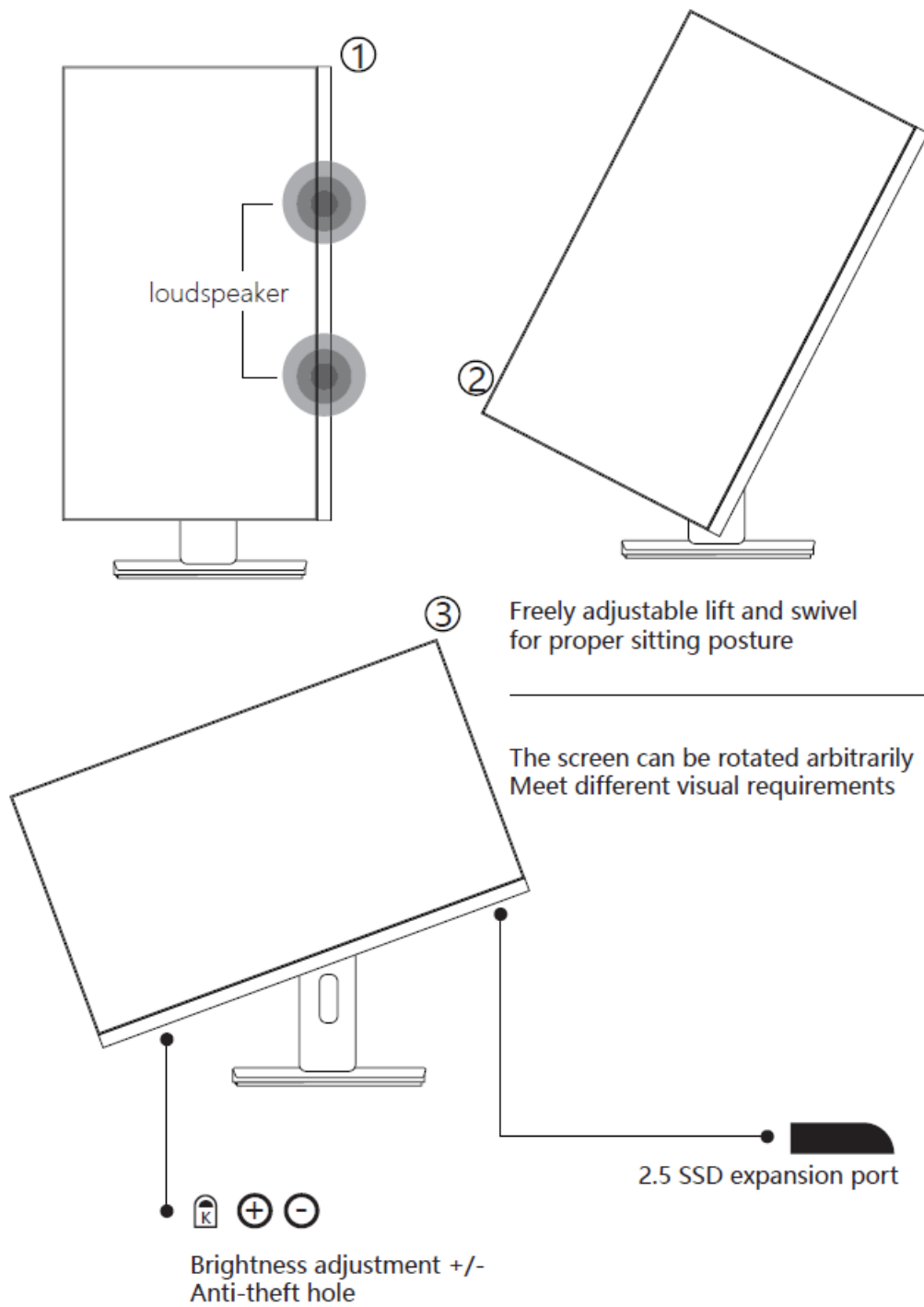
Know your product



1. Power button
2. Fingerprint (optional)
3. DVD (optional)
4. Camera
5. Headphone jack
6. Micro SD card slot
7. audio port (of a computer)
8. USB
9. USB



1. Power connector
2. HDMI*1
3. VGA*1
4. Black USB 2.0
5. RJ45 network port
6. Blue USB 3.0
7. Microphone, headset



- Suitable for 23.8 inches / 27 inches, the picture is for reference only, specific in kind shall prevail.

Know your Screen



1. **Start Screen**- Display useful information at a glance without opening the app.
2. **Microsoft™ Account** – Change account settings or switch to another user account.
3. **Settings** – View and change any system settings.
4. **Power** – Shut Down, Hibernate or put your PC to sleep.
5. **Search Bar** – Quickly find files, directions, information or the name of a song.
6. **Notification Area** – View all notifications, date and time.
7. **Peek** – Quickly show your desktop

WARNING

- You need to log on your Microsoft account before the application program completely runs.

Using the Computer

Before First Use

- Before first use, plug the power adapter into the power port and connect it to a power outlet.
- Connect the keyboard and mouse.
- Ensure that you have a good Wi-Fi connection, with your network name and password available.

Startup

Press the power button to turn on the computer.

Wait for the Desktop screen to appear.

The computer is now ready for use.

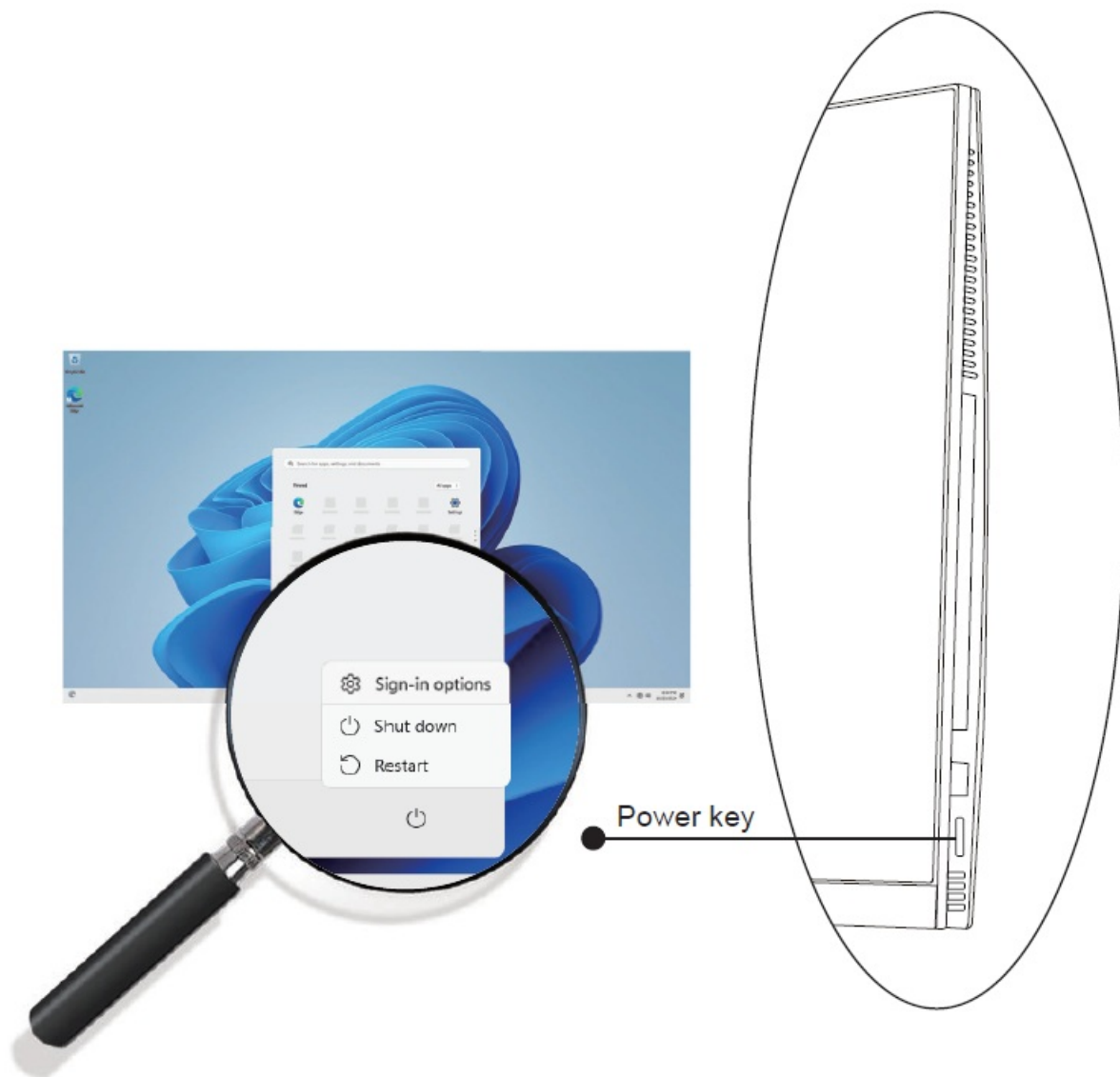
During the first use, the startup guide will help you set up the device:

- Language
- Date and time
- Wi-Fi connection
- Location services options
- Third-party applications
- Necessary updates
- Account synchronization

Starting And Shutting the Computer

Starting the Computer

- Press the power button and wait for the screen to turn on.
- Wait for the desktop screen to appear;
- The computer is now ready for normal use.



Shutting the Computer

- Press the start button and click on the power icon. You will then be given the options to shut down, sleep, or

restart.



Screen Settings


Turning the Screen On or Off

- When the computer is on, you can turn off the screen to conserve power and protect the screen. Simply press the start button and click on the power icon, then choose sleep.
- It is strongly recommended that you sign into/register for a Windows account (needed for the installation of new apps).
- When prompted it is also recommended that you agree to backing up your computer. This creates copies of all of your files should you ever need to restore the computer.

Connect to a Wi-Fi network

The Notification bar displays icons that indicate your computer internet status.

-  Connected to a Wi-Fi network (waves indicate connection strength).
-  There are no Wi-Fi networks in range, or the Wi-Fi is not connected.


Open the Settings menu by pressing the start button and clicking on the cog / settings icon 
Select your network from the list of available networks. You will be prompted to confirm the connection. Click "Connect" to confirm
If the network is protected (indicated by a lock icon), you will be prompted to enter a password or other credentials.

Warning

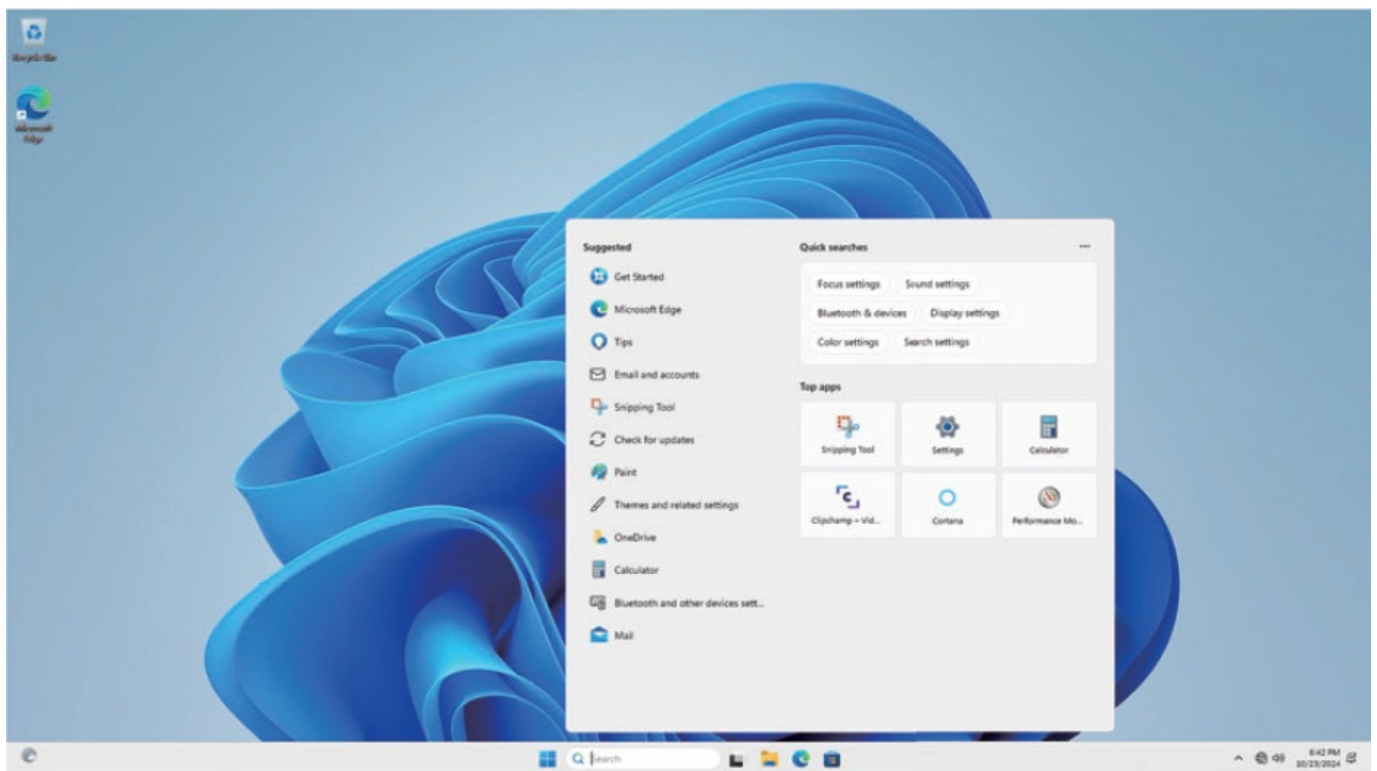
- There are no Wi-Fi networks in range, or the Wi-Fi is not connected.

User Interface

Start Menu

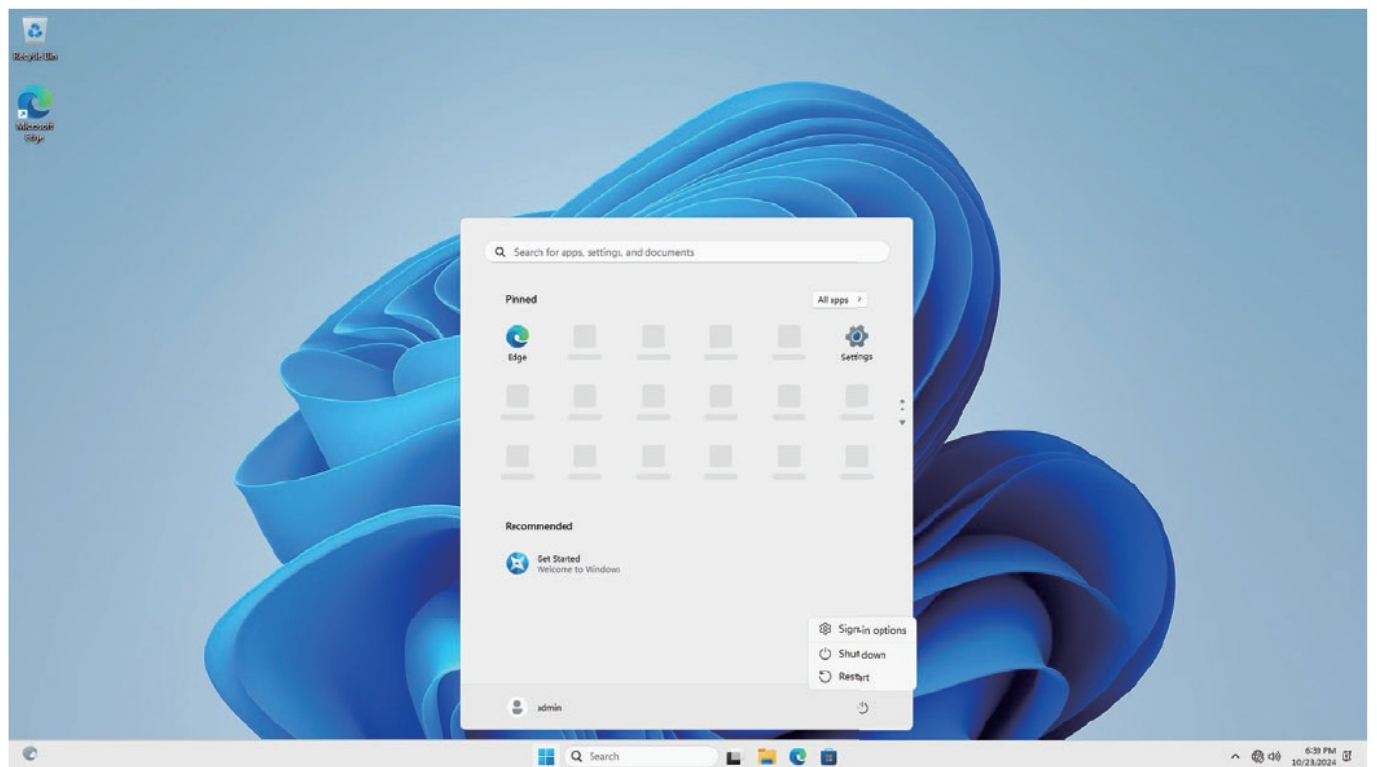
- To open the start menu select the icon in  the bottom left hand corner of the desktop. Once the menu has been opened you will be greeted with a variety of options.

Applications



- In addition to already fixed on the start screen of the application, you can open all applications in the home page.

Adding a shortcut tile to start menu



1. Right-click on properties
2. Select fixed at the beginning of the page

Menu bar

- Expand the menu bar from the screen.
- File manager, settings, power supply and all applications, you can sleep / shutdown / restart the device



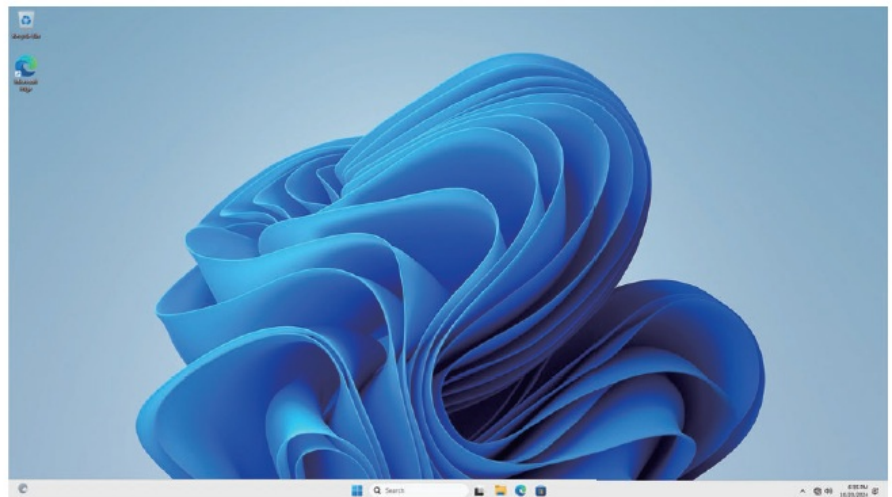
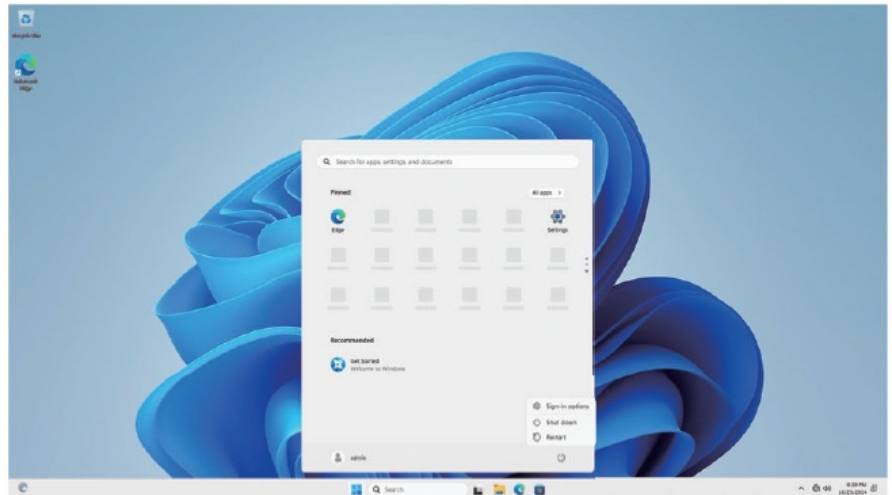
Sign-in options



Shut down



Restart



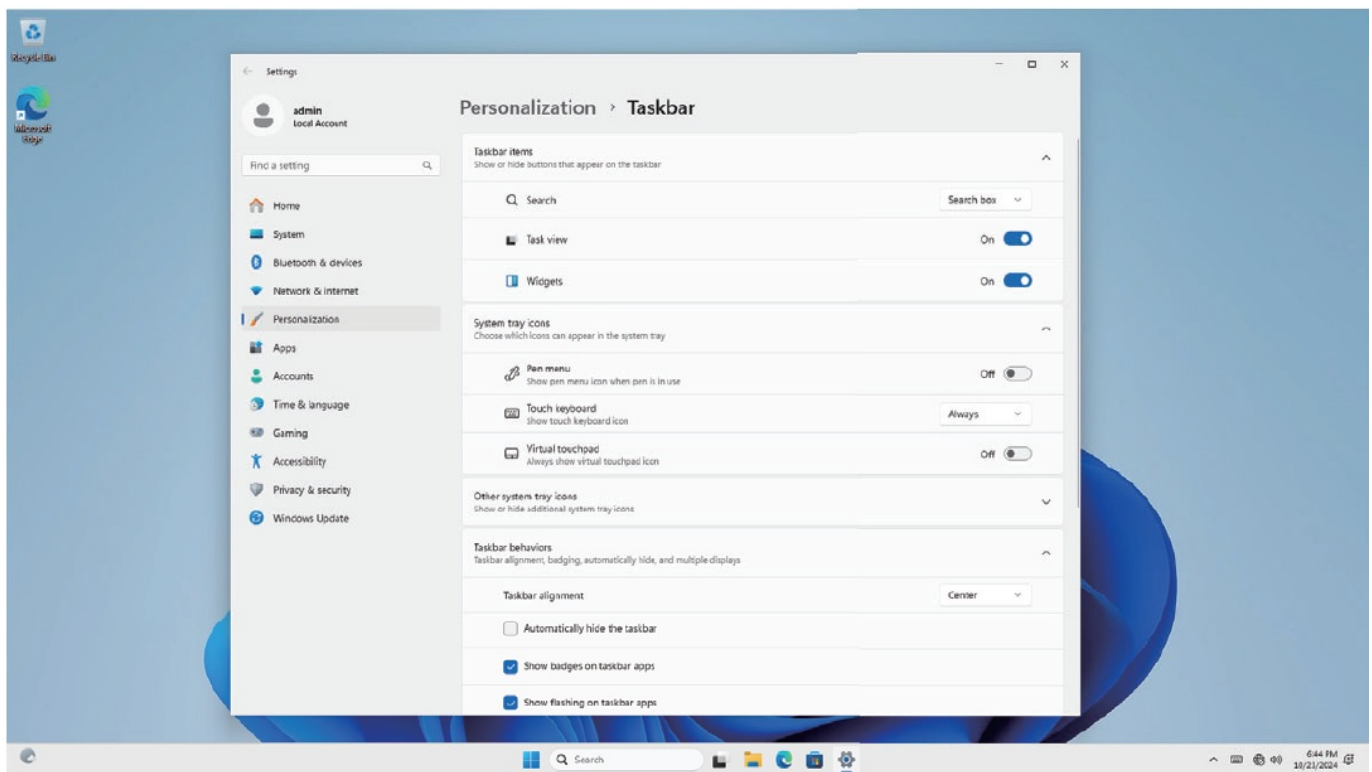
Operating Interface

Multitasking operating interface

- Click the Desktop task view to operating a multi-operating interface



Windows Centre

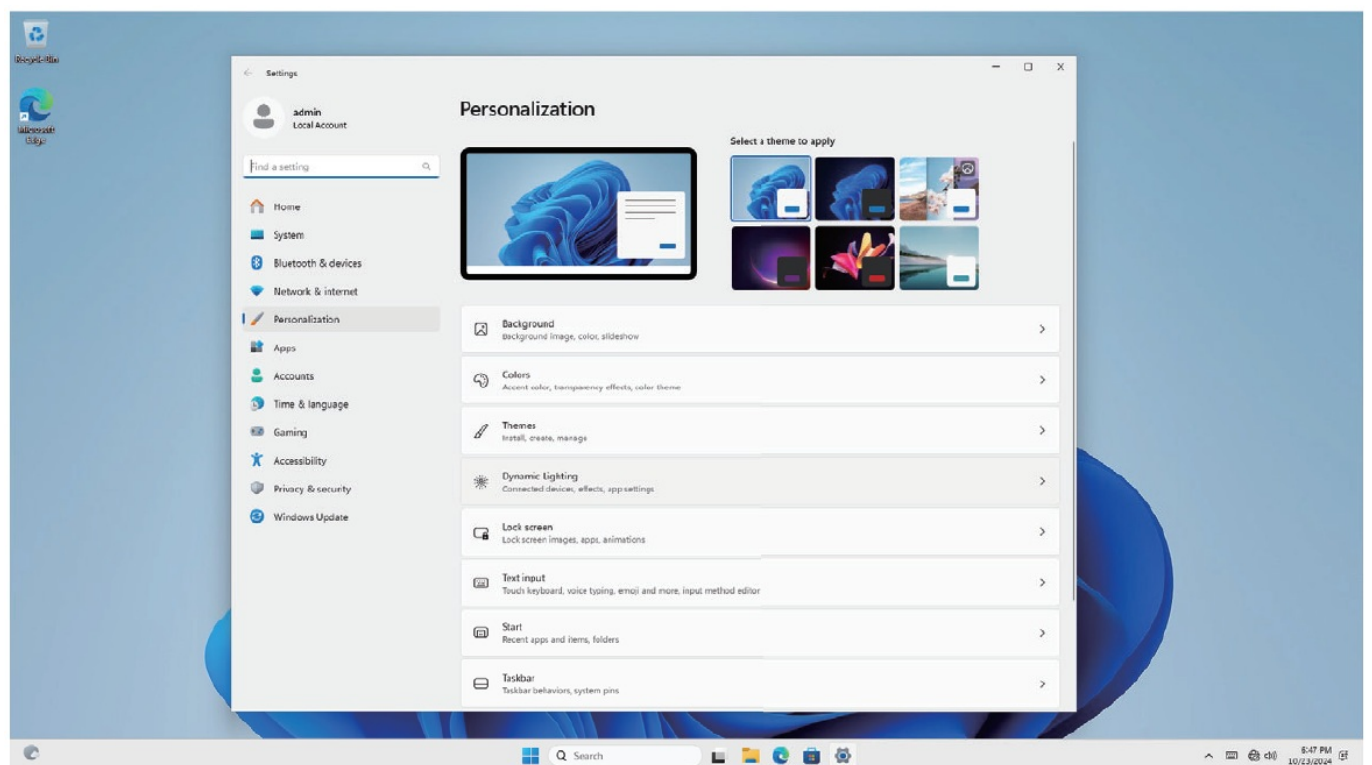
- The Action Center is where you can find application notifications and quick actions. On the bottom right corner of the screen, look for the Action Center icon.
- The Action Center allows access to quick settings, in the form of small boxes at the bottom of the panel.
- Notifications within the action centre are sorted into categories by app.



The Action Center also supports actionable notifications, such as recent text messages, emails or social media integration

Personalizing Changing your wallpaper and themes


Press start  and select the settings icon . Select the personalization menu where you will be greeted with the options to change your background/theme for the Desktop and lock screen. In this section, you also have the option to change the Windows accent colours and choose which elements will use the color.



To download new apps

- To install new apps approved by Windows,click the Windows Store icon on the bottom task bar.
- There you will find over 1 million apps including many of which are free.
- Even if you only going to use free apps you will still need to create a Windows account but you don't need to enter your credit card details to do this.

Documents / Resources

	<p>HB Computers SLK All In one Computer [pdf] Owner's Manual</p> <p>SLK All In one Computer, SLK, All In one Computer, one Computer, Computer</p>
---	---

References

- [User Manual](#)

[Manuals+](#), [Privacy Policy](#)

This website is an independent publication and is neither affiliated with nor endorsed by any of the trademark owners. The "Bluetooth®" word mark and logos are registered trademarks owned by Bluetooth SIG, Inc. The "Wi-Fi®" word mark and logos are registered trademarks owned by the Wi-Fi Alliance. Any use of these marks on this website does not imply any affiliation with or endorsement.