

**HAY**

HAY Cupola Table Lamp



## HAY Cupola Table Lamp Instructions

[Home](#) » [HAY](#) » HAY Cupola Table Lamp Instructions 

### Contents

- [1 HAY Cupola Table Lamp](#)
- [2 Product Information](#)
- [3 Product Usage Instructions](#)
- [4 TECHNICAL DATA](#)
- [5 ONLY FOR NORTH AMERICAN CUSTOMERS](#)
- [6 IMPORTANT SAFETY INSTRUCTIONS](#)
- [7 CARE & MAINTENANCE](#)
- [8 TOOLS](#)
- [9 Documents / Resources](#)
  - [9.1 References](#)
- [10 Related Posts](#)

**HAY**

**HAY Cupola Table Lamp**



## Product Information

### Specifications

- Fitting type: E14 (EU) or E12 (US)
- Power range: 5-8W (Max. 8W)
- Suggested color temperature: Warm White
- Designed for indoor use only

### Product Usage Instructions

#### Installation

1. Wall screws are not included. Contact your local dealer for suitable screw systems.
2. Wall fixing/hanging must be done by a qualified person to prevent injury.
3. Ensure flexible wiring connected to wall-mounted luminaires is fixed securely to avoid strangulation risks.

#### Maintenance

Refer to the Care & Maintenance guide for cleaning instructions to prolong the product's life.

#### Bulb Information

1. Use LED bulbs with the product to ensure safety and optimal performance.
2. Do not use incorrect bulbs as it may lead to accidents or damages.

#### FAQ

**Q: Can I use this product with a different type of bulb?**

A: It is recommended to use LED bulbs with this product as per manufacturer guidelines to ensure safety.

## **CUPOLA LAMP COLLECTION**

### **GENERAL INFORMATION**

### **TECHNICAL DATA**

- This product is fitted with one E14 (EU) or one E12 (US) bulb fittings. HAY recommends using this product with LED bulbs.
- Fitting type: E14 (EU) or E12 (US)
- Power range: 5-8W (Max. 8W)
- Suggested colour temperature: Warm White.
- HAY will not accept any responsibility for any accidents, injuries or damages that occur due to the use of incorrect bulbs.

### **ATTENTION**

- Ensure that the power supply to the circuit has clearly been turned OFF before installing the product. In some countries, electrical installation must be carried out by authorised electricians/contractors; please check with your local authority for guidance.
- As wall materials vary, screws for wall fixation are not included. For advice on a suitable screw system for your wall, contact your local specialised dealer. Wall fixing/hanging must be carried out by a qualified person, since wrong fixation may cause injury or damage.
- To reduce the risk of strangulation, the flexible wiring connected to wall-mounted luminaires shall be effectively fixed to the wall if the wiring is within arm's reach.
- The product must not be modified in any way. HAY accepts no responsibility for any products that have been modified or tampered with. If the external flexible cable or cord of this luminaire is damaged, it should be exclusively replaced by a qualified electrician in order to avoid an electrical hazard. This lamp is designed for indoor use only.

### **ONLY FOR NORTH AMERICAN CUSTOMERS**

### **IMPORTANT SAFETY INSTRUCTIONS**

This product has a polarised plug (one blade is wider than the other) as a feature to reduce the risk of electric shock. This plug can only be inserted in

### **CARE & MAINTENANCE**

The product can be cleaned with a soft damp cloth and mild detergent, or a dry microfibre cloth. Do not use alcohol or any other solvents to clean the product and avoid using abrasive or rough sponges. Ensure that the power supply has been turned OFF before cleaning the product.

Our Care & Maintenance offers guidance for optimal maintenance of your HAY product. It includes advice and instructions on cleaning and caring for specific materials to prolong the life of your lighting.

- Please find our Care & Maintenance guide by scanning the QR code
- You can find more relevant information on Cupola Lamp Collection by scanning the QR code

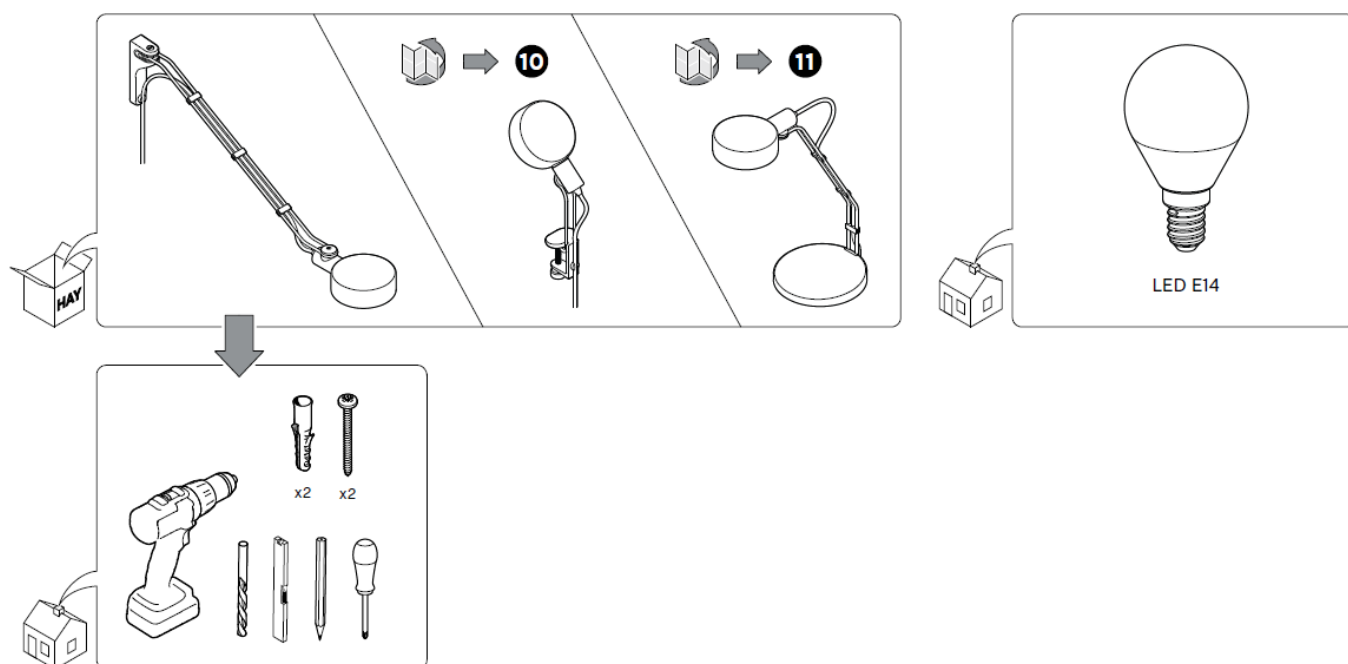


You can also find the same information here [hay.dk/downloads](http://hay.dk/downloads)

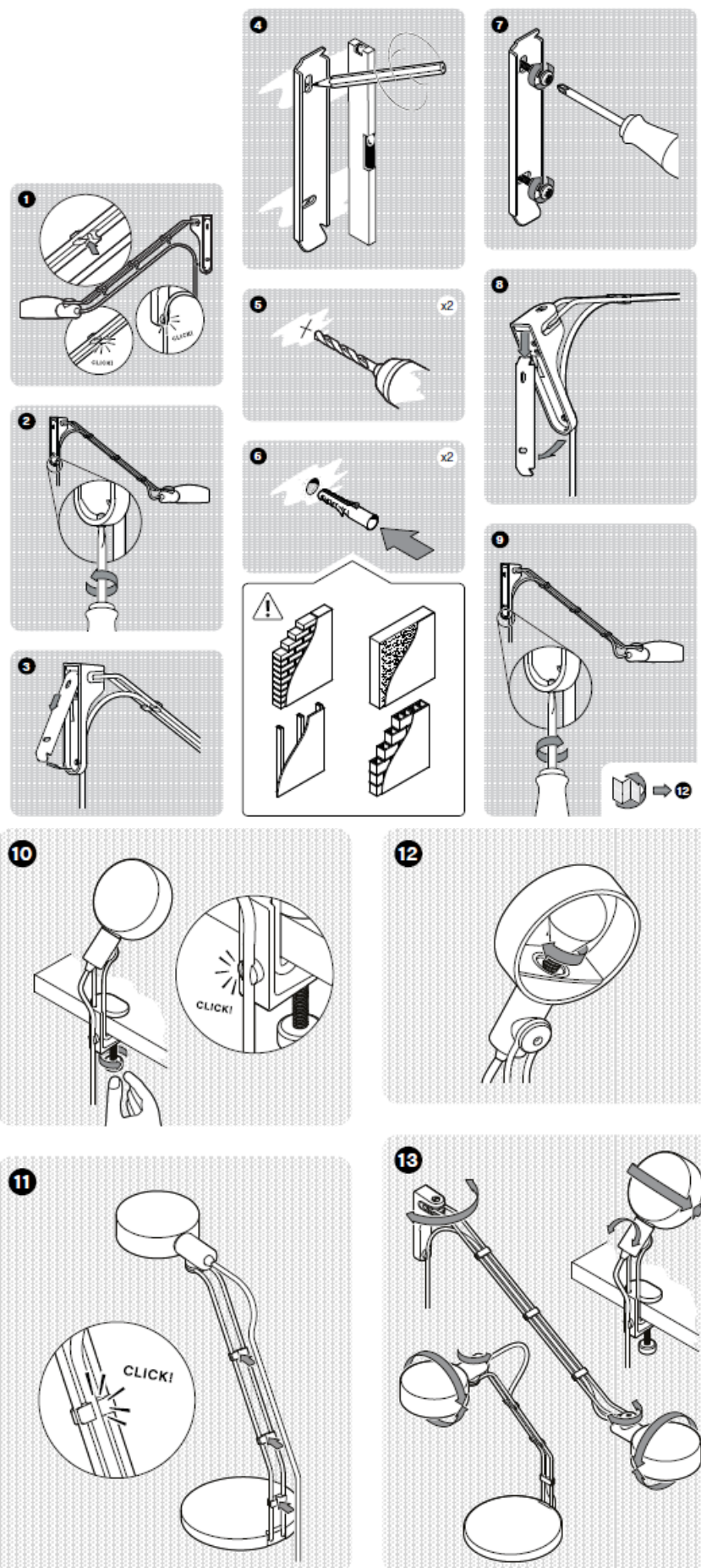
- Havnen 3 8700 Horsens Denmark +45 31646000/ [hay@hay.com](mailto:hay@hay.com) [www.hay.com](http://www.hay.com) polarised outlet one way. If the plug does not fit fully in the outlet, reverse the plug. If it still does not fit, contact a qualified electrician. Never use with an extension cord unless the plug can be fully inserted. Do not alter the plug.



## TOOLS



## Installation





## [HAY Cupola Table Lamp](#) [pdf] Instructions Cupola Table Lamp, Cupola, Table Lamp, Lamp

## References

- HAY [Downloads for HAY's contract market - manuals, 3D files etc. - HAY](#)
- [User Manual](#)

### Manuals+, [Privacy Policy](#)

This website is an independent publication and is neither affiliated with nor endorsed by any of the trademark owners. The "Bluetooth®" word mark and logos are registered trademarks owned by Bluetooth SIG, Inc. The "Wi-Fi®" word mark and logos are registered trademarks owned by the Wi-Fi Alliance. Any use of these marks on this website does not imply any affiliation with or endorsement.