




HAVIT Lightning HV9101 LED Strip Touch Panel Controller User Manual

[Home](#) » [HAVIT LIGHTNING](#) » HAVIT Lightning HV9101 LED Strip Touch Panel Controller User Manual 

HAVIT Lightning HV9101 LED Strip Touch Panel Controller User Manual

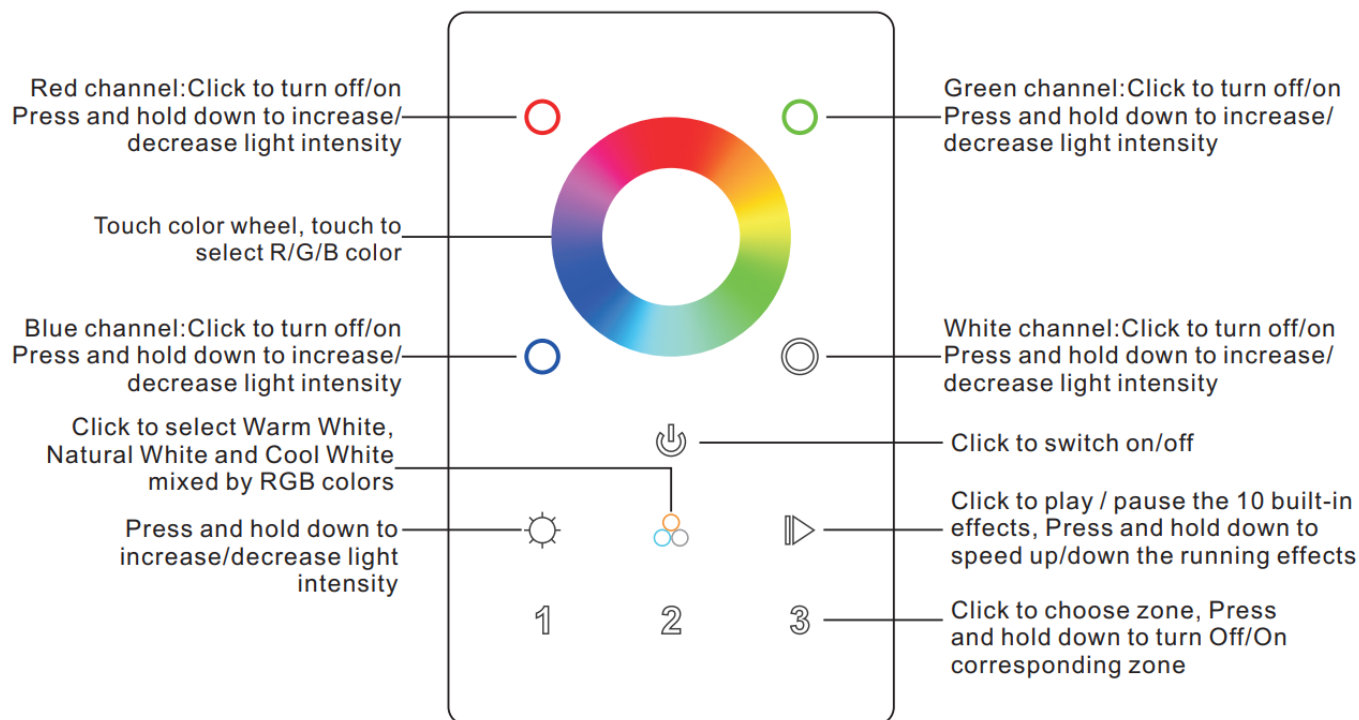


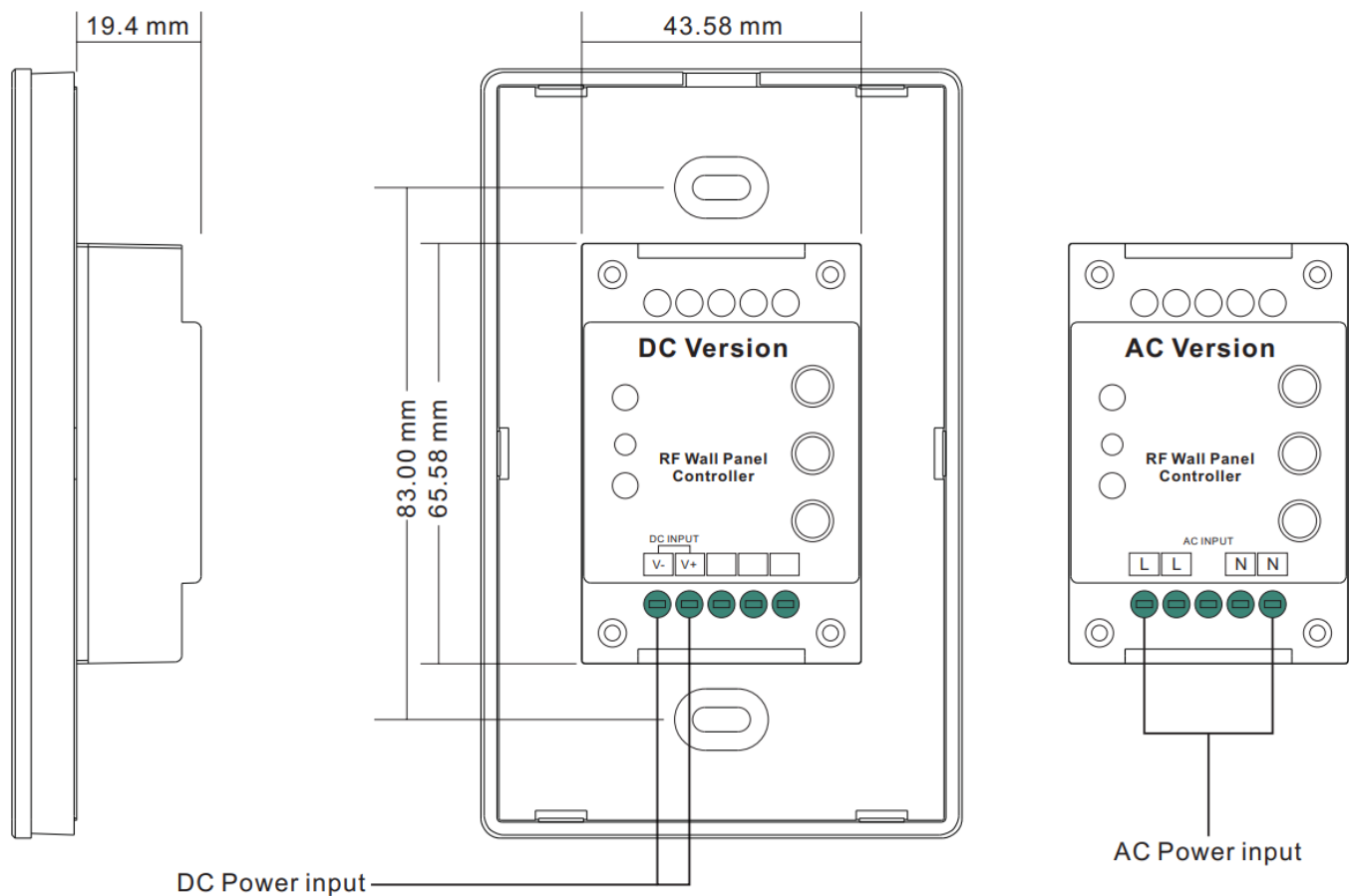
Important: Read All Instructions Prior to Installation

Contents

- [1 Function introduction](#)
- [2 Product Data](#)
- [3 Wiring diagram](#)
- [4 Operation](#)
- [5 Installation](#)
- [6 Documents / Resources](#)
- [7 Related Posts](#)

Function introduction





Product Data

Output Signal	RF signal	RF signal
Power Supply	12-24VDC	100-240VAC
Power consumption	20 mA	20 mA
Operating temperature	0-40°C	0-40°C
Relative humidity	8% to 80%	8% to 80%
Dimensions	75x120x29.1mm	75x120x29.1mm

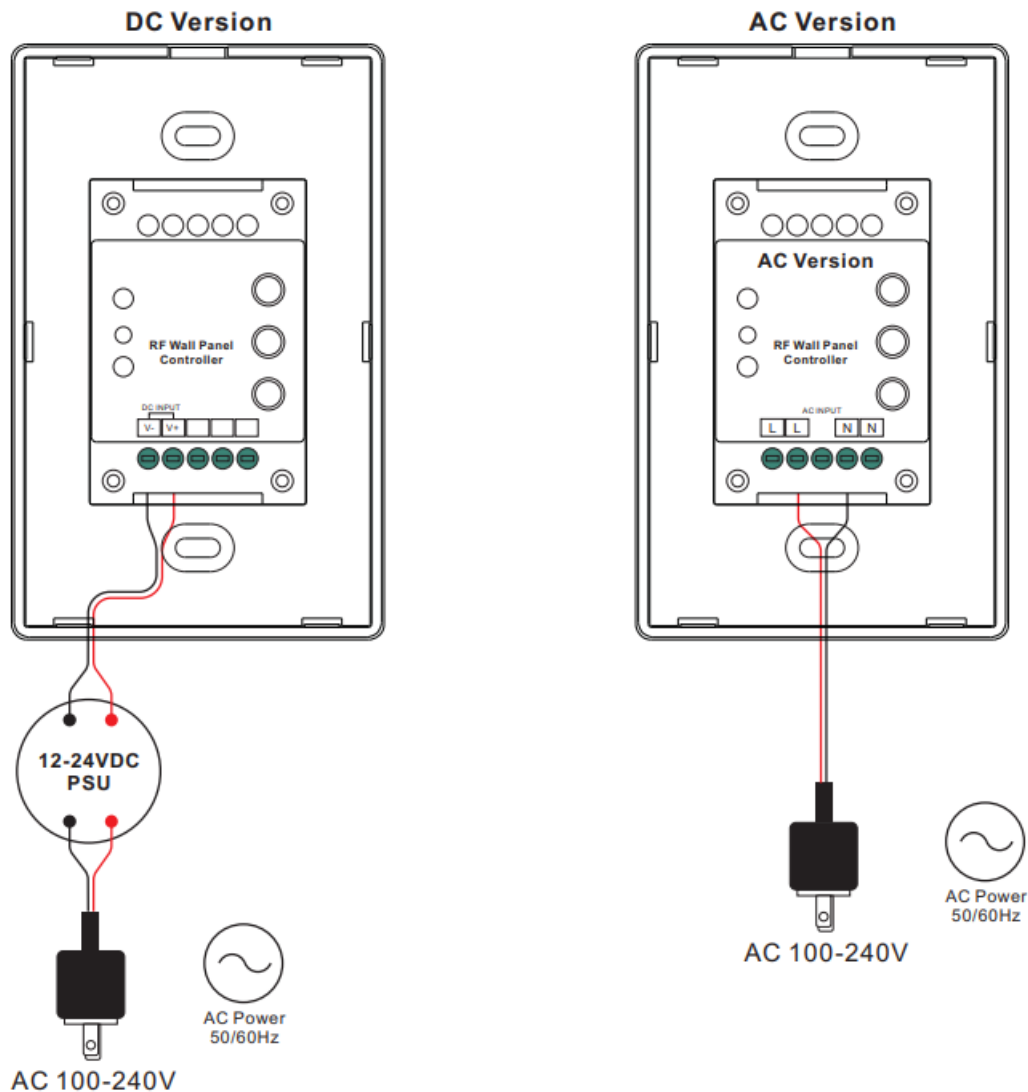
- Touch sensitive
- Glass interface(white & black)
- Compatible with all universal series RF receivers
- Radio frequency: 916.5MHz
- Control RGBW color
- Control 3 zones synchronously and separately
- Waterproof grade: Ip20

Safety & Warnings


- DO NOT install with power applied to device.

- DO NOT expose the device to moisture.

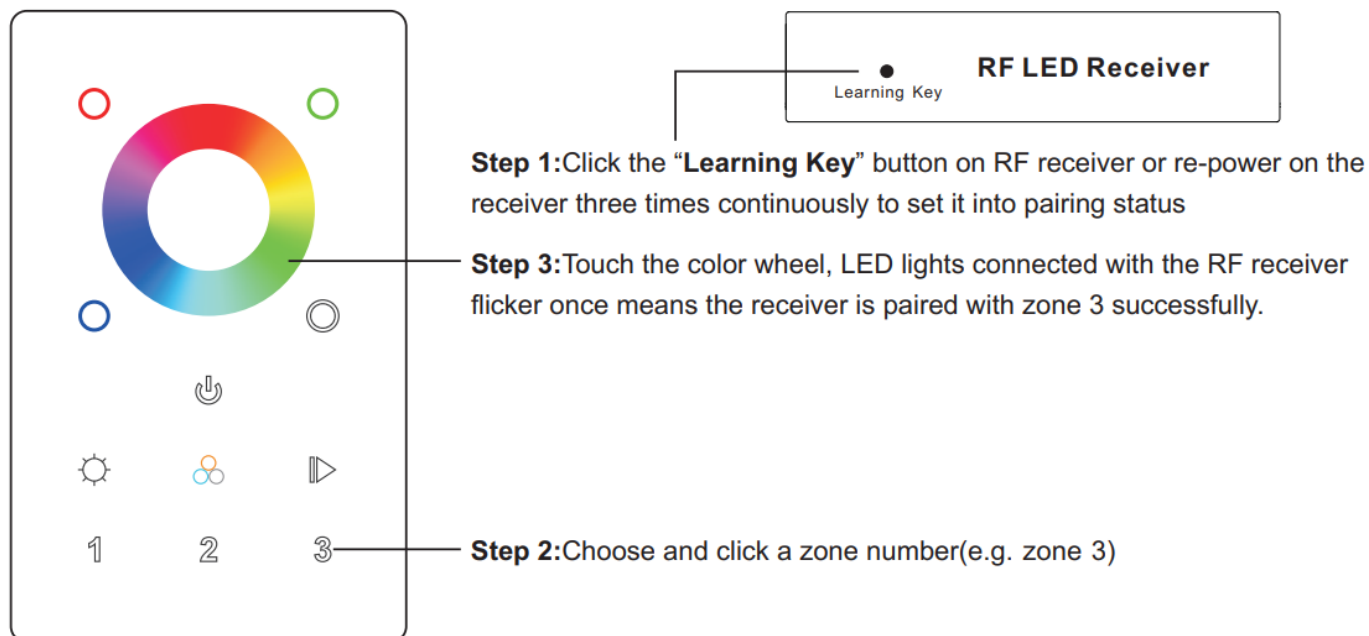
Wiring diagram



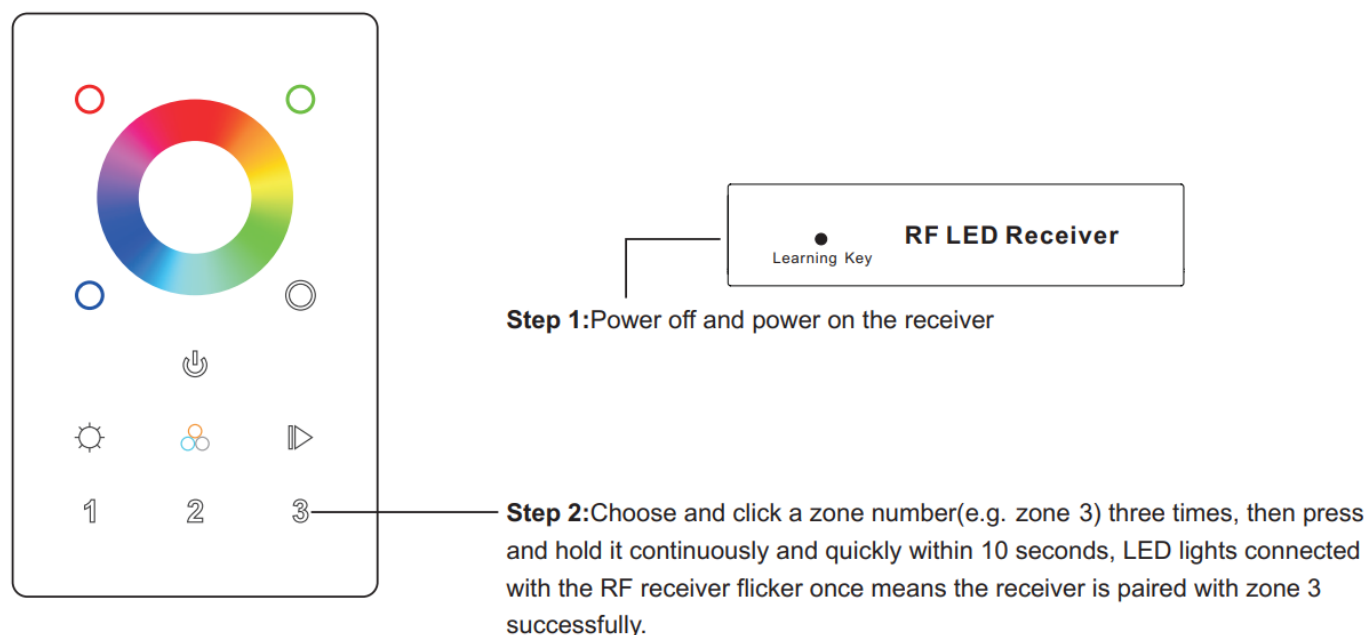
Operation

1. Do wiring the wall panel & RF receiver according to wiring diagram (please refer to the instruction of RF receiver that you would like to pair with)
2. Power on, then touch the button , indicator of the controller turned blue

Pair with RF receiver(Method 1)



Pair with RF receiver (Method 2)



Built-in 10 color changing modes are as follows:

Mode 1: Any two colors of RGB mix fade-in & fade-out

Mode 2: RGB three colors mix fade-in & fade-out

Mode 3: RGB three colors mix fade-out & fade-in

Mode 4: RGB flash

Mode 5: RGB three colors fade-in & fade-out successively

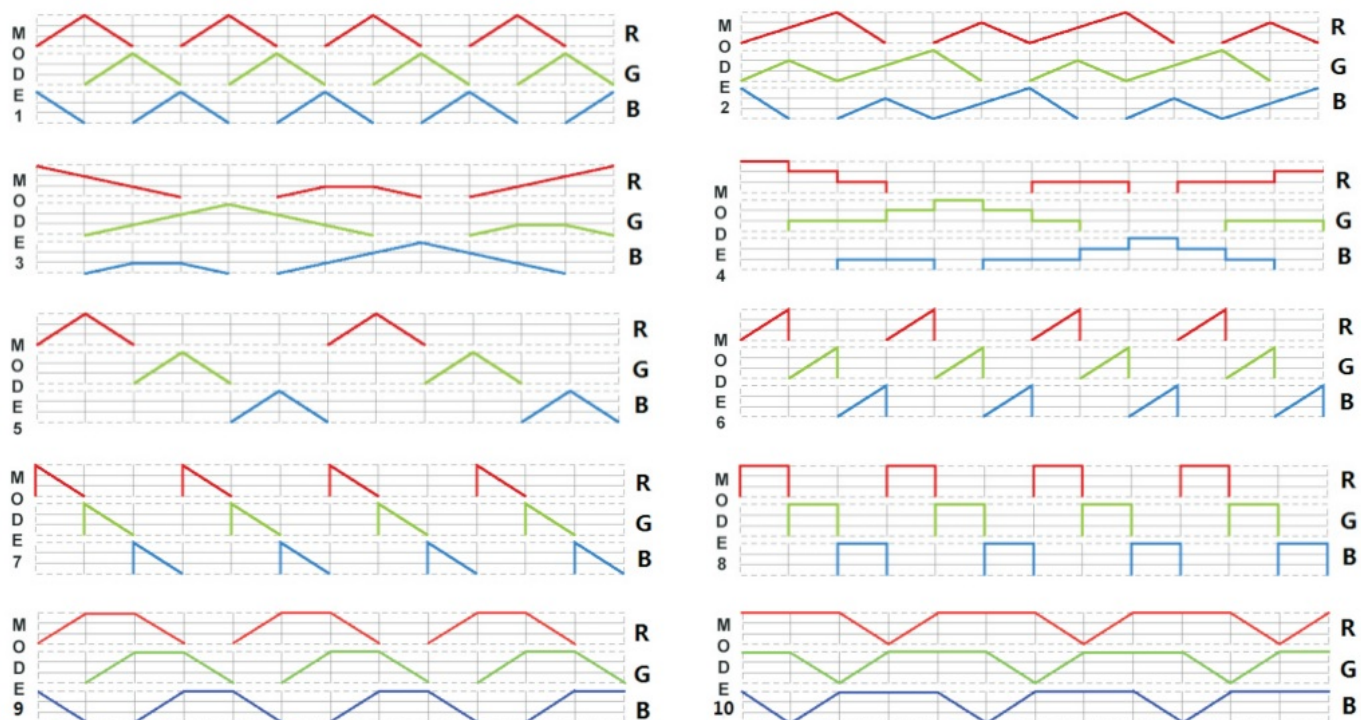
Mode 6: RGB three colors fade-in successively

Mode 7: RGB three colors fade-out successively

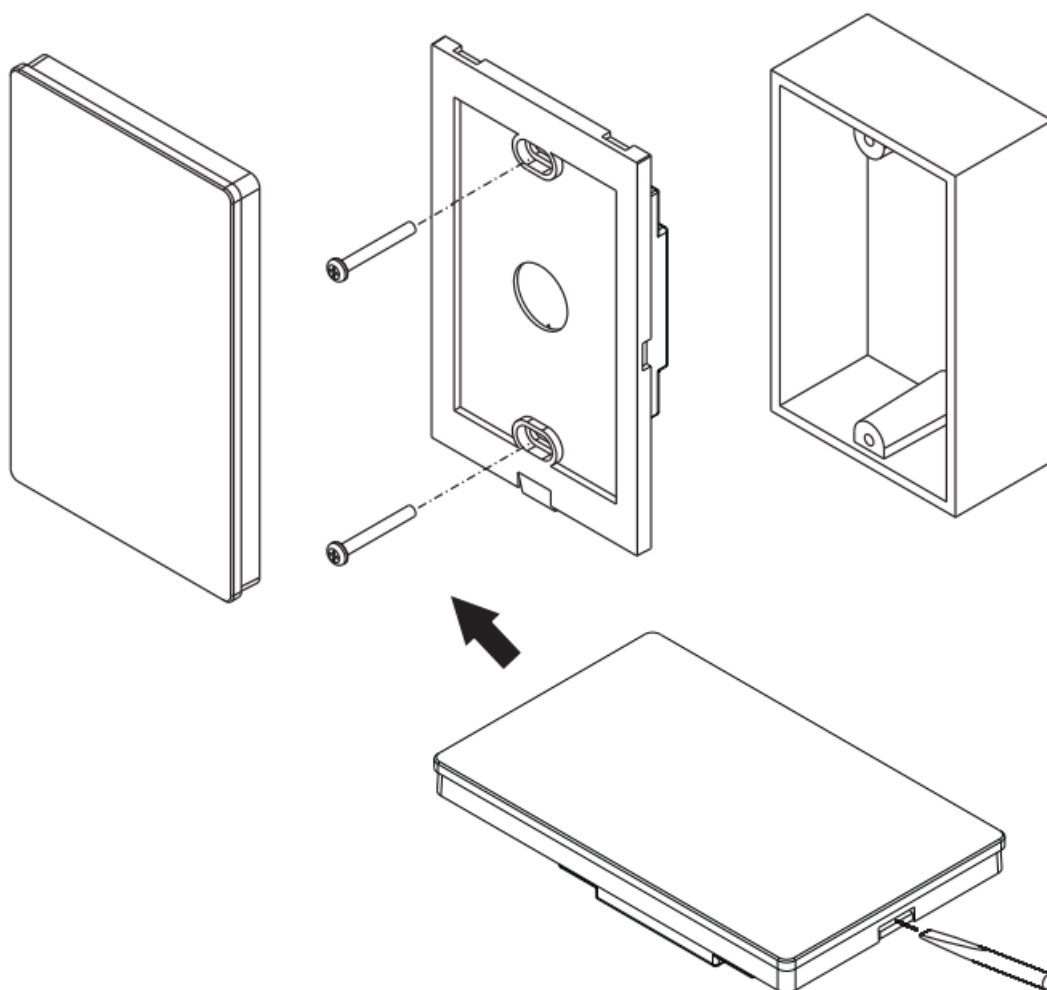
Mode 8: RGB three colors jump changing successively

Mode 9: R&B two colors mix fade (R in B out), then G fade-in, then R&B mix fade (R out B in), then G fade-out

Mode 10: B fade-out, then G&B mix fade (G out B in), then R&G mix fade (R out G in), then R fade-in



Installation



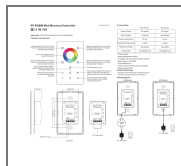
How to stop running mode of single color LED light caused by RGBW sender interference:

1. When pairing single color LED light to a single color remote, it might be interfered and paired by nearby RGBW

senders, which might control the single color light into running mode. The running mode can not be stopped by the paired single color remote or by delete pairing.

2. Then we need this remote, and pair the remote to the receiver via above “Pair with RF receiver(Method 2)”, then touch the color wheel to stop the running mode.
3. Then delete pairing and pair the receiver to the single color remote again, it can be controlled by the remote again.

Documents / Resources



[HAVIT Lightning HV9101 LED Strip Touch Panel Controller](#) [pdf] User Manual
HV9101 LED Strip Touch Panel Controller, HV9101, LED Strip Touch Panel Controller, Touch Panel Controller, Panel Controller, Controller