

Havit Lighting HV9101-2830B LED Strip Touch Panel Controller Installation Guide

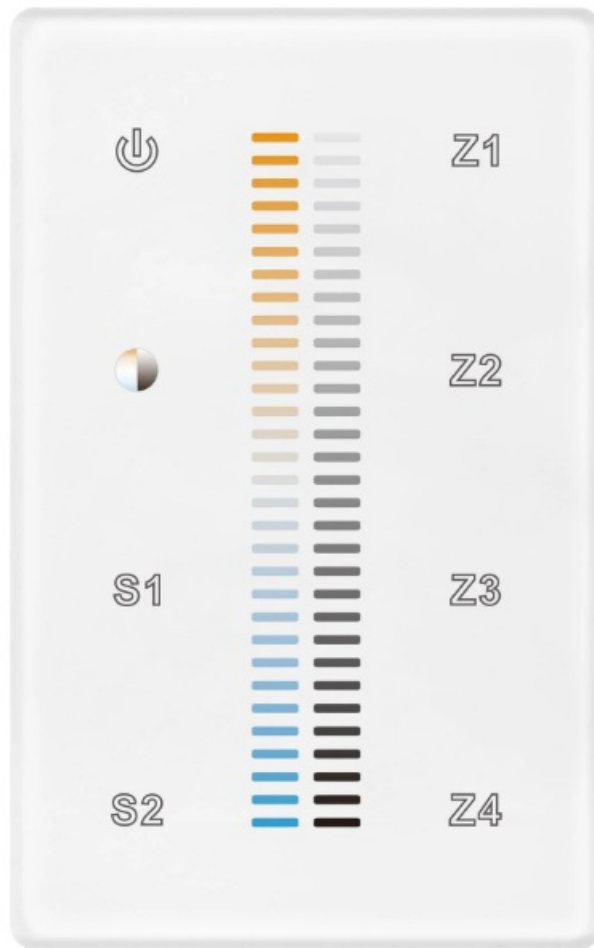
[Home](#) » [Havit Lighting](#) » Havit Lighting HV9101-2830B LED Strip Touch Panel Controller Installation Guide 

Contents

- [1 Havit Lighting HV9101-2830B LED Strip Touch Panel Controller](#)
- [2 Product Usage Instructions](#)
- [3 FEATURES](#)
- [4 DIMENSION](#)
- [5 Product Data](#)
- [6 Wiring diagram](#)
- [7 Operation](#)
- [8 Installation](#)
- [9 FAQ](#)
- [10 Documents / Resources](#)
 - [10.1 References](#)



Havit Lighting HV9101-2830B LED Strip Touch Panel Controller



Specifications

- **Output Signal:** RF signal
- **Power Supply:** DC Version – 12-24VDC, AC Version – 100-240VAC
- **Power consumption:** DC Version – < 20 mA, AC Version – < 15 mA
- **Operating temperature:** Not specified
- **Relative humidity:** Not specified
- **Dimensions:** DC Version – 19.4 mm x 43.58 mm x 83.00 mm, AC Version – 65.58 mm

Product Usage Instructions

Installation

1. Do wiring the wall panel & RF receiver according to the wiring diagram.
2. Power on the device.
3. Touch the button to turn on the controller; the indicator should turn blue.

Pairing with RF Receiver

1. Press the Learning Key button on the RF receiver or re-power the receiver three times continuously to set it into pairing status.
2. Choose and click a zone number (e.g., zone 3).
3. Touch the slider; LED lights connected with the RF receiver should flicker once, indicating successful pairing

with zone.

Saving Color/Scene/Mode

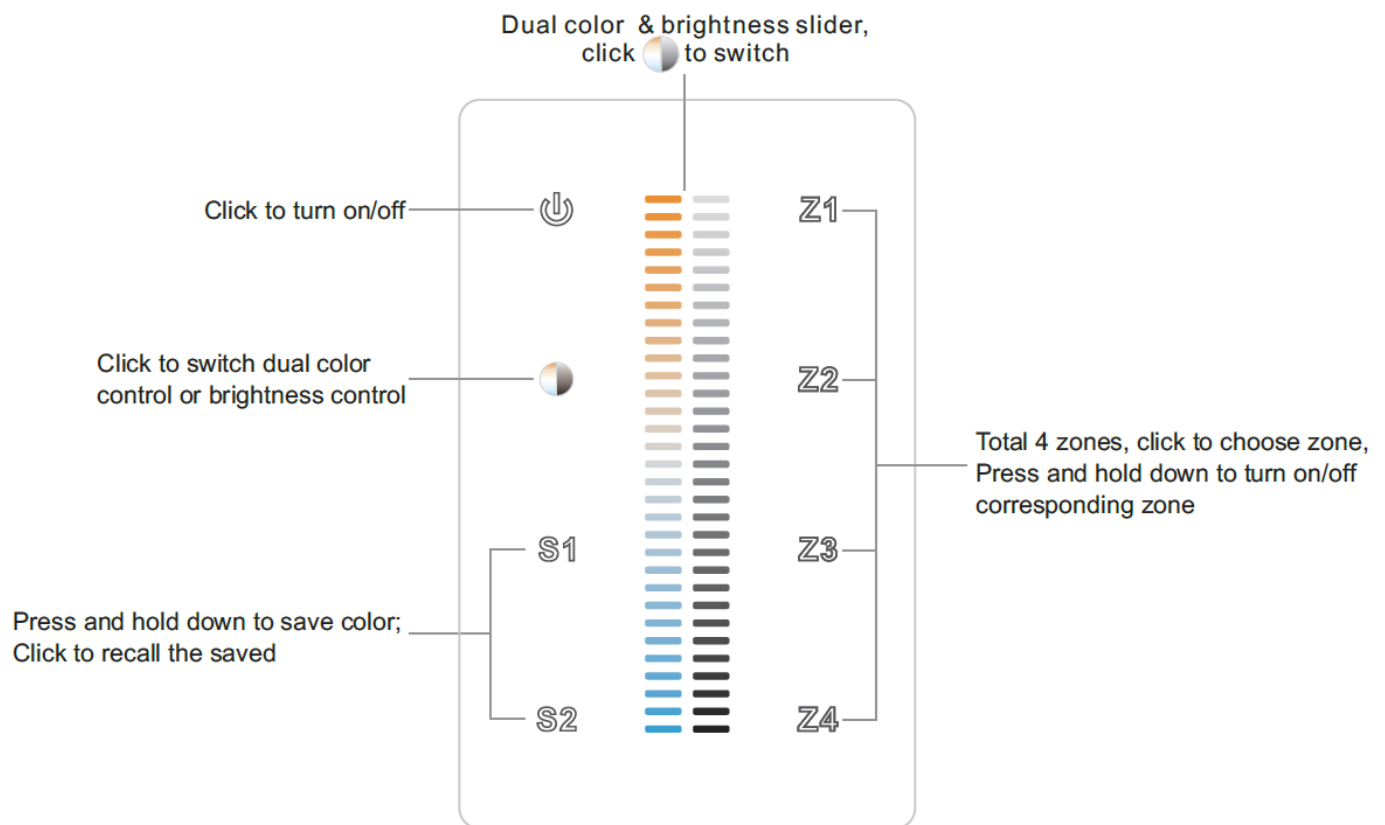
1. Choose and click one or multiple paired zone numbers (e.g., zone 1).
2. Touch the slider to select the desired scene.
3. Press and hold any scene buttons (e.g., S1); LED lights connected with the RF receiver should flicker once, confirming successful saving of color/scene.

Recalling Saved Colors/Scenes

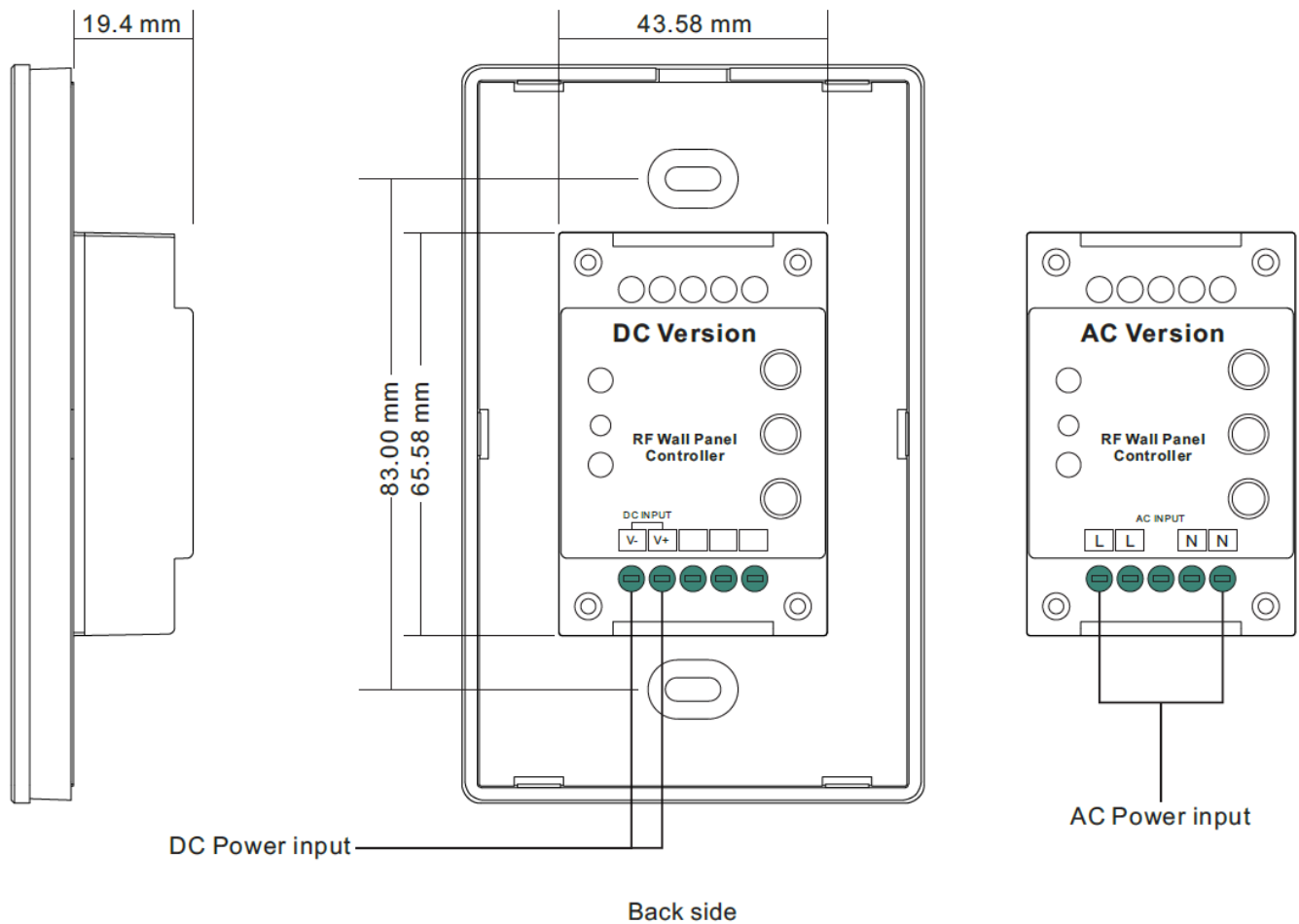
1. Choose and click one or multiple paired zone numbers (e.g., zone 1).
2. Click any scene buttons (e.g., S1) to recall the saved scene.

Important: Read All Instructions Prior to Installation

FEATURES



DIMENSION



Product Data

	DC Version	AC Version
Output Signal	RF signal	RF signal
Power Supply	12-24VDC	100-240VAC
Power consumption	< 20 mA	< 15 mA
Operating temperature	0-40°C	0-40°C
Relative humidity	8% to 80%	8% to 80%
Dimensions	75x120x29.1mm	75x120x29.1mm

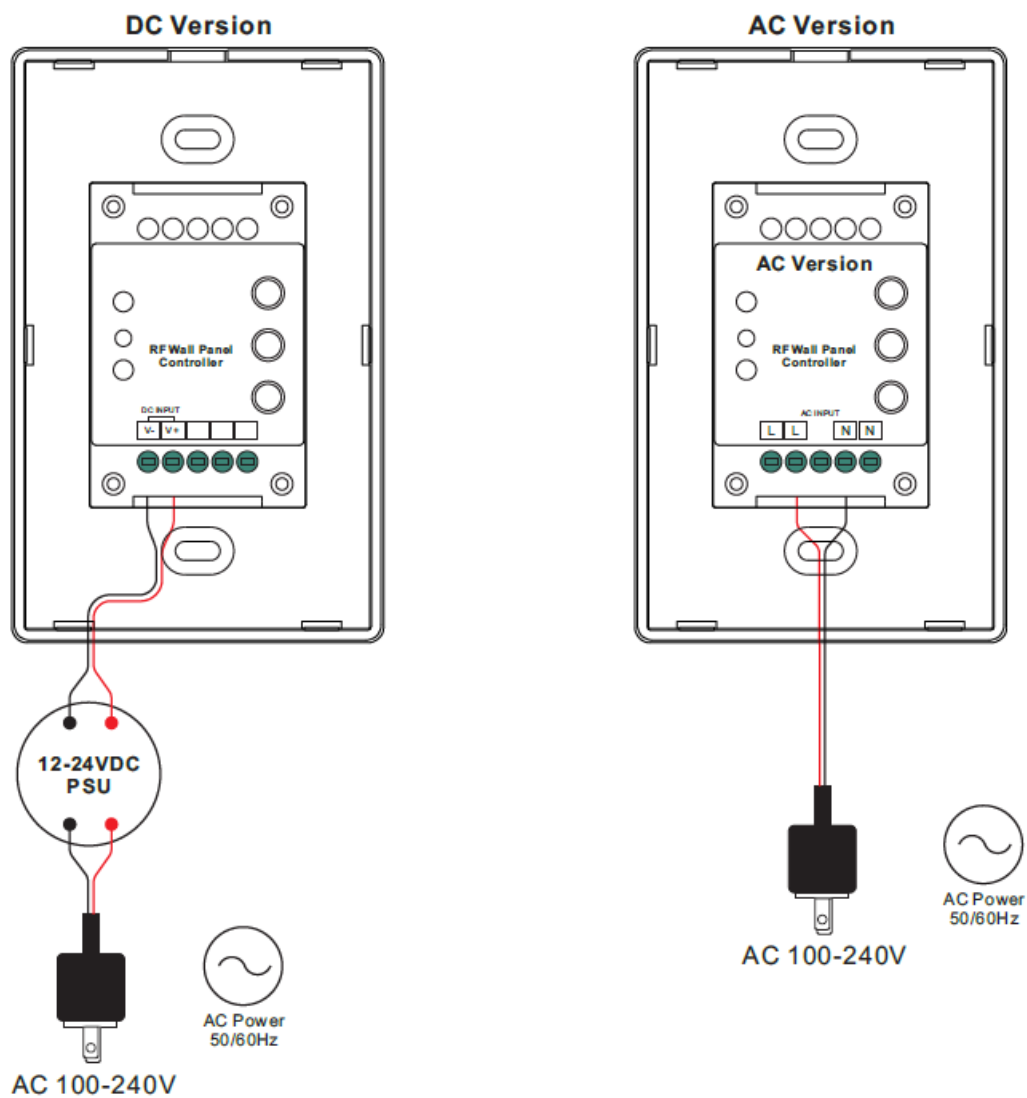
- Touch sensitive
- Glass interface(white & black)
- Compatible with all universal series RF receivers, radio frequency: 916.5MHz
- Control CCT color
- Control 4 zones synchronously and separately
- Waterproof grade: IP20

Safety & Warnings

- DO NOT install with power applied to device.

- DO NOT expose the device to moisture

Wiring diagram



Operation

1. Do wiring the wall panel & RF receiver according to wiring diagram (please refer to the instruction of RF receiver that you would like to pair with)
2. Power on, then touch the **POWER** button to turn on the controller, indicator of the controller turned blue

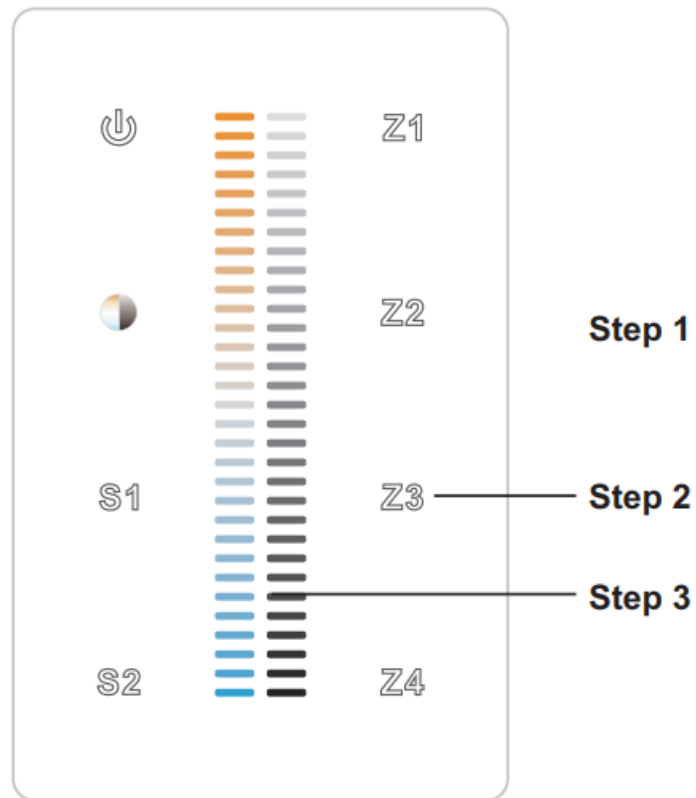
Pair with RF receiver

1. Step 1: Click the "Learning Key" button on RF receiver or re-power on the receiver three times continuously to set it into pairing status



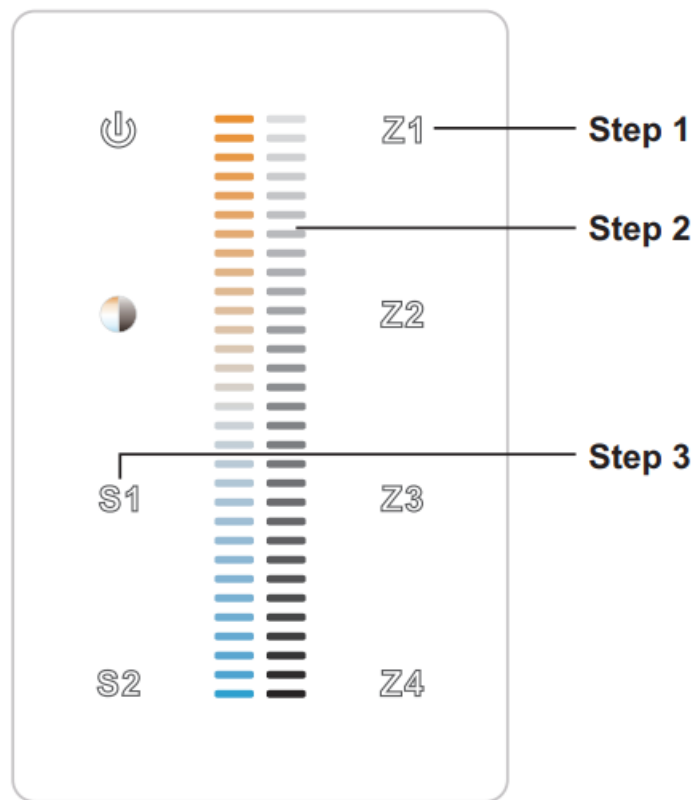
2. Step 2: Choose and click a zone number (e.g. zone 3)

3. Step 3: Touch the slider, LED lights connected with the RF receiver flicker once means the receiver is paired with zone 4 successfully.



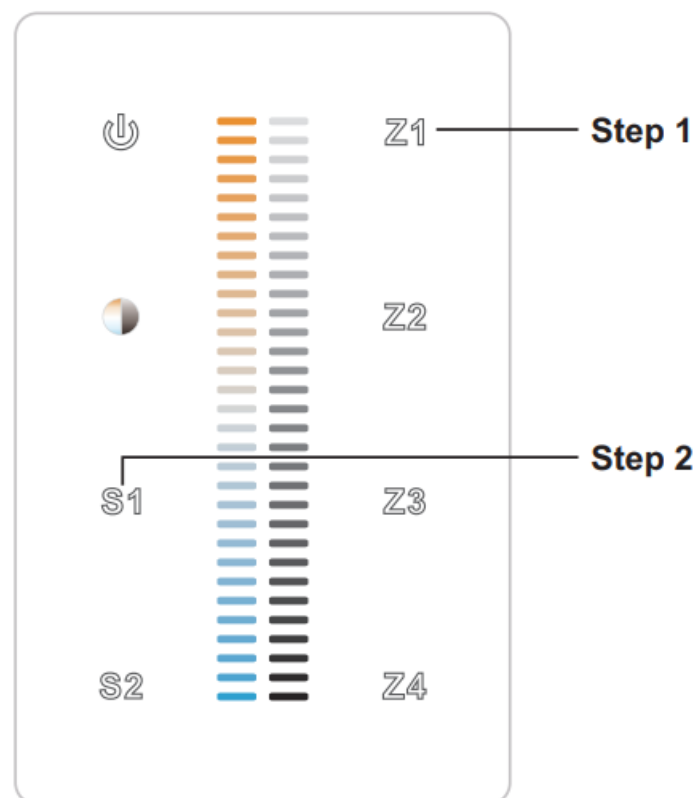
Save color/scene/mode

1. Step 1: Choose and click one or multiple paired zone numbers (e.g. zone 1)
2. Step 2: Touch the slider to select the scene you like
3. Step 3: Press and hold any scene buttons of S1/S2 (e.g. S1), LED lights connected with the RF receiver flicker once means the color/scene was saved successfully.

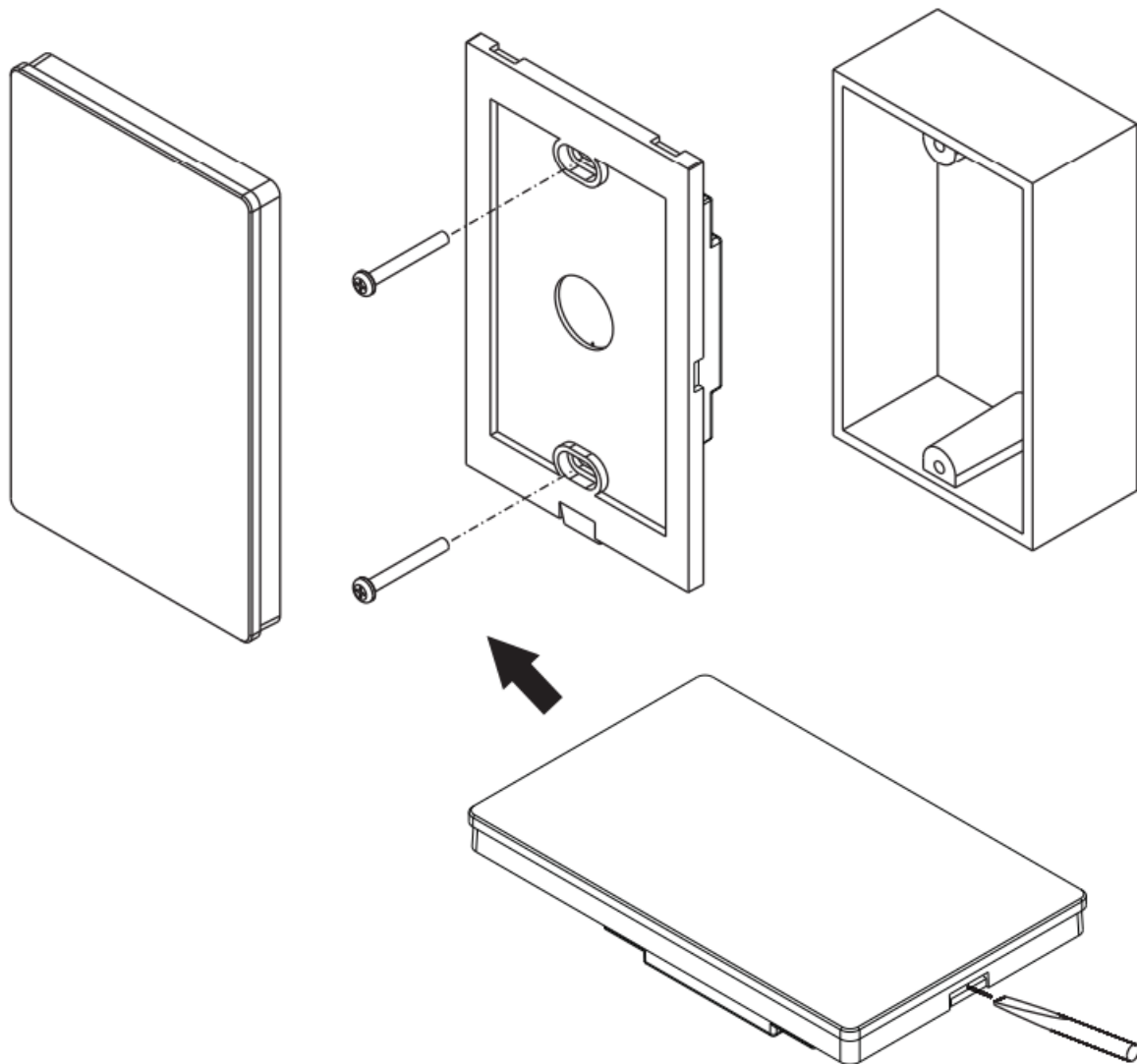


Recall the saved colors/scenes

1. Step 1: Choose and click one or multiple paired zone numbers (e.g. zone 1)
2. Step 2: Click any scene buttons of S1/S2 (e.g. S1) to recall the saved scene



Installation



FAQ

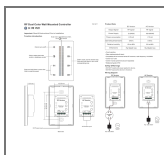
Q: How do I switch between dual color control and brightness control?

A: Click on the dual color & brightness slider to switch between the two modes.

Q: How do I turn on/off a specific zone?

A: Press and hold down to turn on/off the corresponding zone after choosing it by clicking on the zone number.

Documents / Resources



[Havit Lighting HV9101-2830B LED Strip Touch Panel Controller](#) [pdf] Installation Guide
HV9101-2830B, 70010077, HV9101-2830B LED Strip Touch Panel Controller, HV9101-2830B,
LED Strip Touch Panel Controller, Touch Panel Controller, Panel Controller, Controller

References

- [User Manual](#)

[Manuals+](#), [Privacy Policy](#)

This website is an independent publication and is neither affiliated with nor endorsed by any of the trademark owners. The "Bluetooth®" word mark and logos are registered trademarks owned by Bluetooth SIG, Inc. The "Wi-Fi®" word mark and logos are registered trademarks owned by the Wi-Fi Alliance. Any use of these marks on this website does not imply any affiliation with or endorsement.