

**hauck**  
*group*  
**530023 2 in  
1 Carrycot  
and  
Footmuff**



## Hauck 530023 2 in 1 Carrycot and Footmuff Instruction Manual

[Home](#) » [hauck](#) » Hauck 530023 2 in 1 Carrycot and Footmuff Instruction Manual 

### Contents

- [1 Hauck 530023 2 in 1 Carrycot and Footmuff](#)
- [2 Product Specifications](#)
- [3 INSTALLATION](#)
- [4 WARNING](#)
- [5 IMPORTANT INFORMATION](#)
- [6 CARE AND MAINTENANCE](#)
- [7 Contact](#)
- [8 Frequently Asked Questions](#)
- [9 Documents / Resources](#)
  - [9.1 References](#)

**hauck**  
*group*

**Hauck 530023 2 in 1 Carrycot and Footmuff**



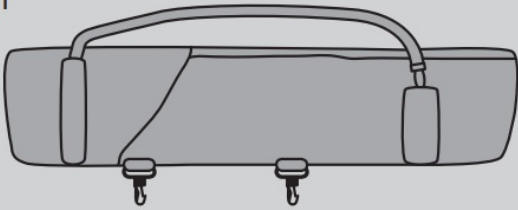
## **Product Specifications**

- Product Name: 2 in 1 Carrycot
- Color: Grey (GR)
- Language Support: Multiple languages, including English, Spanish, Italian, Dutch, etc.
- Dimensions: Varies based on model
- Material: Durable and easy-to-clean fabric
- Weight Capacity: Up to XX lbs/kg
- Features: Convertible design for use as a carrycot or stroller seat

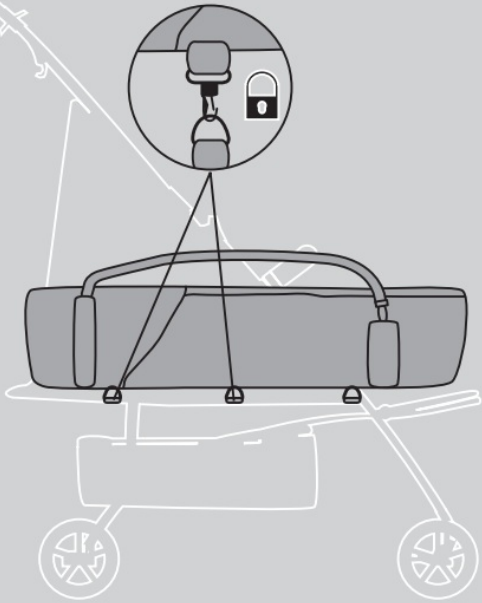
**IMPORTANT – READ CAREFULLY AND KEEP FOR FUTURE REFERENCE!**

## **INSTALLATION**

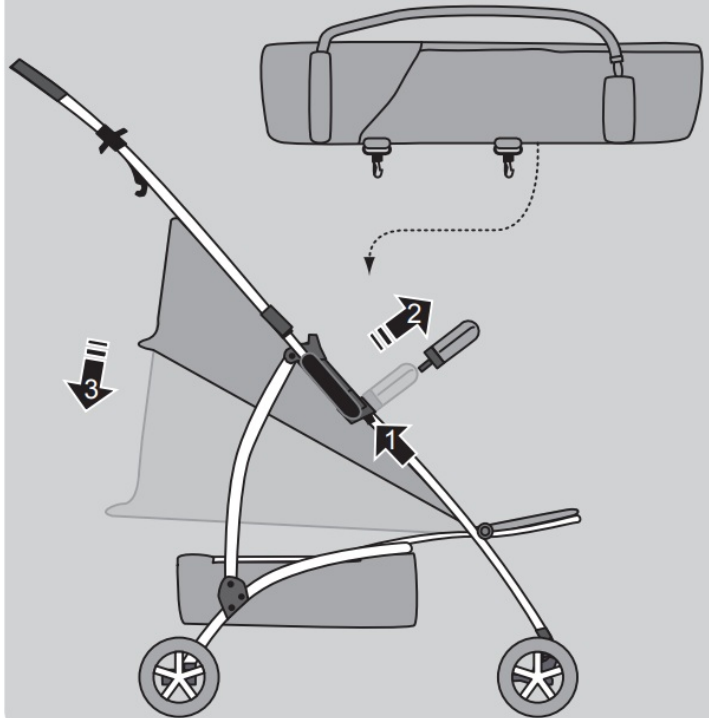
1



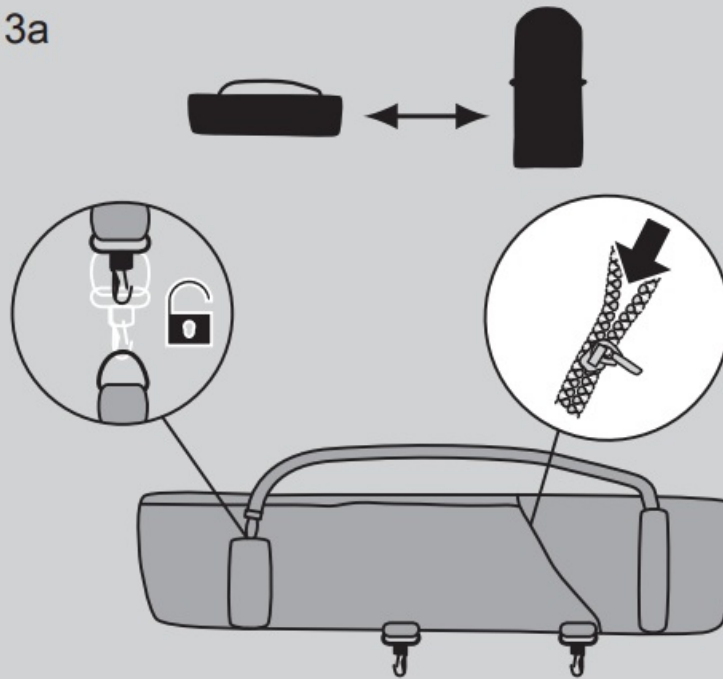
2a



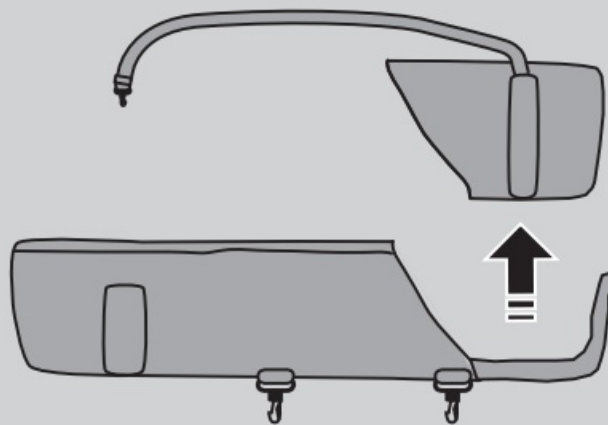
2b



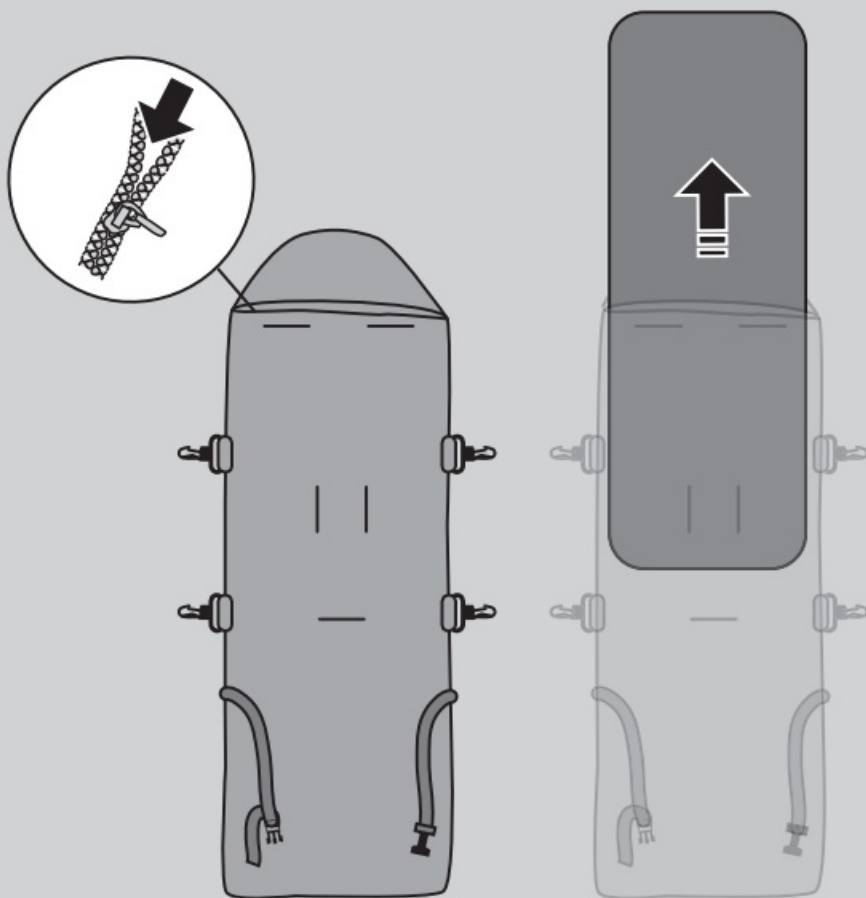
3a



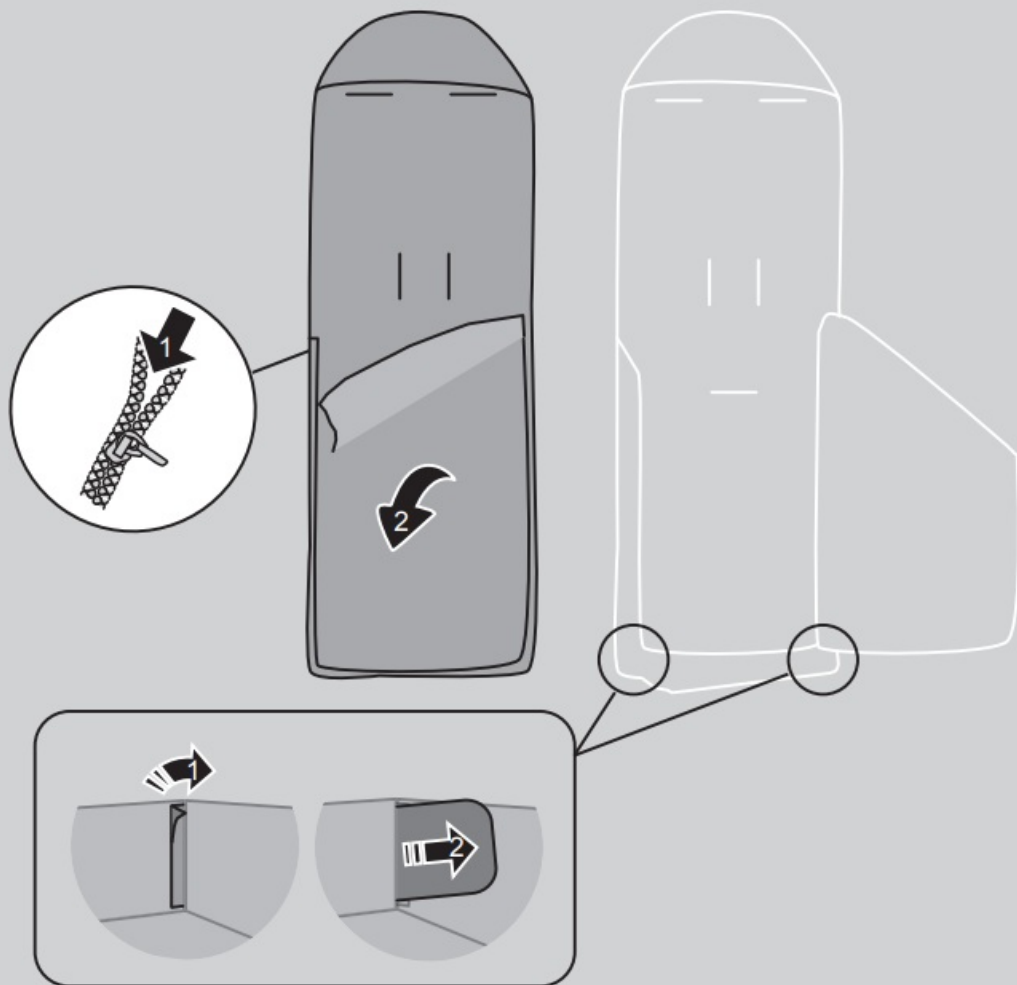
3b



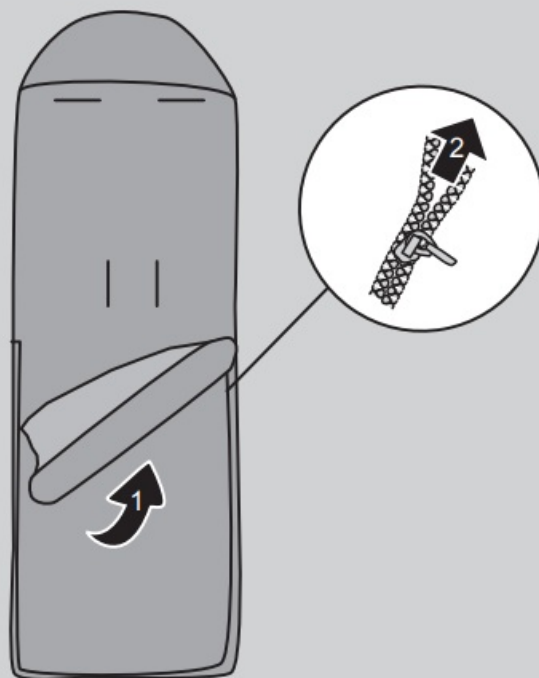
3c



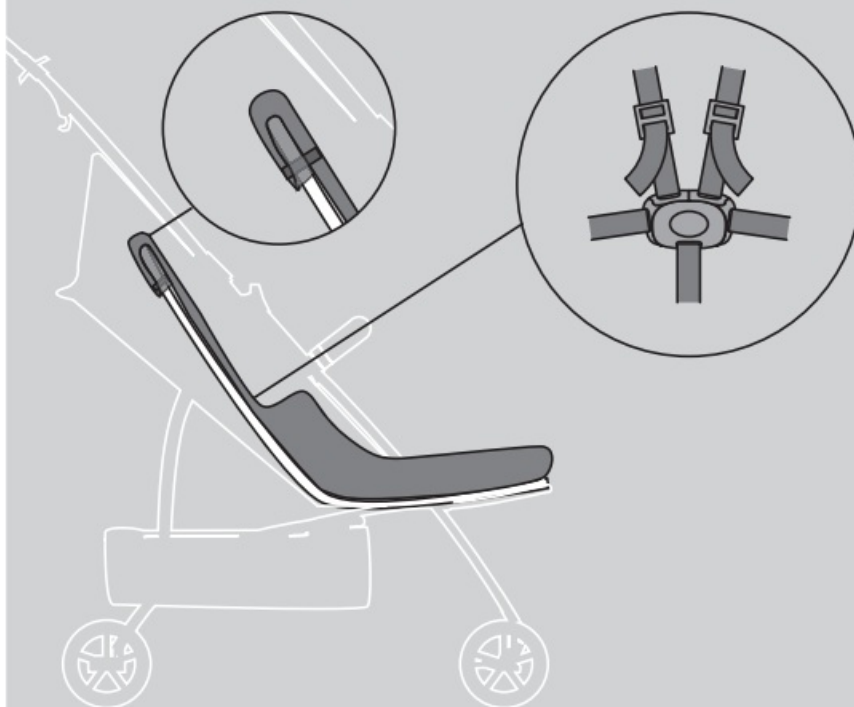
3d



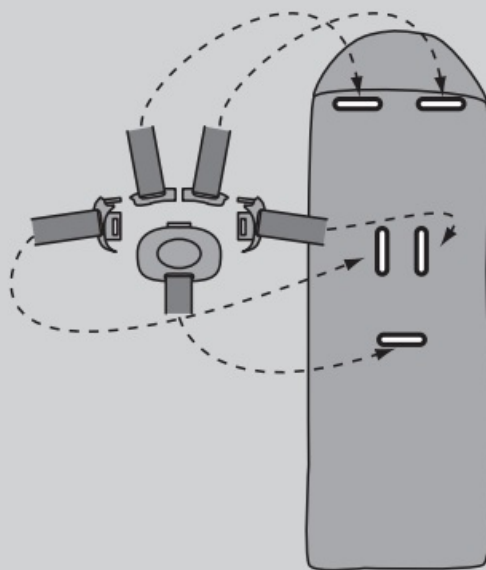
3e



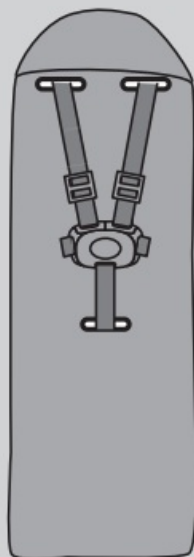
3f



3g



3h



## WARNING

- This product is suitable only for a child who cannot sit up unaided, roll over and cannot push itself up on its hands and knees. Maximum weight of the child: 9kg.
- Only use on a firm, horizontal level, flat and dry surface.
- Do not let other children play unattended near the carrycot.
- Do not use if any part of the carrycot is broken, torn or missing.
- Do not leave flexible carrying handles inside the carrycot.
- Never use this product on a stand.
- Never leave the child unattended.
- EN 1466:2023



## IMPORTANT INFORMATION

- Do not place the carrycot near an open fire or other sources of strong heat.
- Do not add another mattress or any additional upholstered layer on top of the mattress provided or recommended by the manufacturer.
- Only use replacement parts supplied or approved by the manufacturer.
- Inspect the handles and bottom of the carrycot regularly for signs of damage and wear.
- The head of the child in the carrycot should never be lower than the body of the child.
- Be careful when using this product, e.g., when passing through doorways or putting the carrycot down on the floor, in order to prevent injury to the child.
- Do not leave anything in the carrycot that presents a danger of suffocation e.g. non-rigid toys, pillows, ...
- Do not place the carrycot close to another product that presents a danger of strangulation, e.g. strings, blind/curtain cords, ...
- Make sure that your child is not too cold or too warm by checking that the ambient temperature and clothing are comfortable.
- Overheating can endanger the life of your child!
- To ensure safe sleeping, consult a health professional for advice.
- Before carrying or lifting, make sure that the handle(s) is (are) in the correct position of use.

## CARE AND MAINTENANCE

- Please clean, maintain and check this product regularly.

## Contact

- hauck GmbH & Co. KG Frohnlacher Str. 8 96242 Sonnefeld Germany
- phone: +49 (0)9562 9860
- mail: [info@hauck.de](mailto:info@hauck.de)
- web: [www.hauck.de](http://www.hauck.de)

## hauck UK Ltd.

- Ash Road South
- Wrexham Industrial Estate
- Wrexham, LLI3 9UG, UK
- phone: +44 (0)1978 664362
- mail: [info@hauckuk.com](mailto:info@hauckuk.com)

## Frequently Asked Questions


- **Q: What is the weight limit for the carrycot?**
  - A: The weight capacity for the carrycot is up to XX lbs/kg, ensuring safe usage for your child.
- **Q: Can I use the carrycot as a standalone bassinet?**
  - A: The carrycot is designed for use with compatible stroller frames and may not be suitable for standalone

use as a bassinet.

- **Q: How do I adjust the reclining position of the stroller seat?**

- A: Refer to the user manual for specific instructions on adjusting the recline position of the stroller seat based on your model.

## Documents / Resources

 <p>2 in 1 Carrycot</p> <p>WICHTIG - BITTE SORGFÄLTIG LESEN UND FÜR SPÄTERES NACHLESEN UNBEDINGT AUFBEWAHREN!</p>	<p><a href="#">Hauck 530023 2 in 1 Carrycot and Footmuff</a> [pdf] Instruction Manual</p> <p>530023 2 in 1 Carrycot and Footmuff, 530023, 2 in 1 Carrycot and Footmuff, Carrycot and Footmuff, Footmuff</p>
--	---

## References

- [User Manual](#)

### Manuals+, Privacy Policy

This website is an independent publication and is neither affiliated with nor endorsed by any of the trademark owners. The "Bluetooth®" word mark and logos are registered trademarks owned by Bluetooth SIG, Inc. The "Wi-Fi®" word mark and logos are registered trademarks owned by the Wi-Fi Alliance. Any use of these marks on this website does not imply any affiliation with or endorsement.