



[Home](#) » [Support](#) » **Hatteker RFC-5618 6-in-1 Beard Trimmer Kit User Manual** 

Contents [[hide](#)]

- [1 Hatteker RFC-5618 6-in-1 Beard Trimmer Kit](#)
- [2 INTRODUCTION](#)
- [3 SPECIFICATIONS](#)
- [4 WHAT'S IN THE BOX](#)
- [5 FEATURES](#)
- [6 SETUP GUIDE](#)
- [7 CARE & MAINTENANCE](#)
- [8 TROUBLESHOOTING](#)
- [9 PROS & CONS](#)
- [10 WARRANTY](#)
- [11 FREQUENTLY ASKED QUESTIONS](#)
- [12 References](#)



Hatteker RFC-5618 6-in-1 Beard Trimmer Kit



INTRODUCTION

The finest grooming equipment for those who require accuracy and adaptability is the Hatteker RFC-5618 6-in-1 Beard Trimmer Kit. This kit can easily meet all of your

grooming needs because it comes with a T-blade trimmer, hair clipper, precision trimmer, micro shaver, nose trimmer, and body trimmer. Every task, including beard trimming, hair shaping, and sensitive region grooming, is covered by a specific attachment in the package. After only 90 minutes of charging, its lithium-ion battery may run for up to 180 minutes. The ergonomic design makes it easy to wield during extended grooming sessions, and the extremely sharp T-blade guarantees comfortable trimming without yanking hair. The Hatteker RFC-5618 offers great value for the money at only **\$29.99** thanks to its assortment of premium features and attachments. It guarantees a flawless finish every time, making it ideal for both special grooming jobs and daily use.

SPECIFICATIONS

Brand	Hatteker
Model Name	RFC-5618
Charging Time	1.5 Hours
Battery Description	Lithium-Ion
Runtime	180 minutes (3 hours) after 90 minutes of charging
Included Components	Hair clipper, T-blade trimmer, precision trimmer, micro shaver, nose trimmer, body trimmer, 9 guide combs, cleaning brush, USB cable, hair comb
Blades	Zero-gapped manganese steel T-blade, detachable and washable
Motor Power	Heavy-duty motor
Ergonomic Design	Easy to hold, reduces hand/arm strain during extended use

Guide Combs	4 guide combs for T-blade (1mm, 3mm, 5mm, 7mm), 5 guide combs for hair clipper (3mm, 6mm, 9mm, 12mm, 15mm)
Special Features	Multi-functional, versatile for hair cutting, beard shaping, and body grooming
Dimensions	1.63" x 6.34 inches
Weight	1.1 Pounds
Item Model Number	RFC-5618
Batteries Included	1 A battery included
Price	\$29.99



WHAT'S IN THE BOX

- T-blade trimmer
- hair clipper
- precision trimmer
- micro shaver
- nose trimmer
- body trimmer
- User Manual

FEATURES

- **6-in-1 Grooming Kit:** This versatile kit includes a T-blade trimmer, hair clipper, precision trimmer, micro shaver, nose trimmer, and body trimmer to meet all your

grooming needs.



- **Sharp T-Blade:** The zero-gapped manganese steel T-blade stays sharp and is ideal for precise haircuts, beard trims, and detailing work, providing smooth and efficient cuts without pulling.

STAINLESS STEEL BLADE

DETACHABLE, WASHABLE BLADE, EASY TO CLEAN



Washable blades for easy cleaning



- **Detachable and Washable Blades:** The blades can be easily removed and rinsed under water for quick cleaning, ensuring hygiene and easy maintenance.
- **Ergonomic Design:** The trimmer is designed for a comfortable grip, making it easy to hold and use for extended periods without causing hand fatigue.
- **Long Battery Life:** The trimmer provides up to 180 minutes of usage with a **90-minute** charge, so you can groom without worrying about the battery running out.
- **Powerful Motor:** Equipped with a high-performance motor, this trimmer cuts through all hair types smoothly, ensuring consistent results.
- **USB Rechargeable:** The trimmer comes with a USB cable for easy charging, making it convenient to charge from any device, like a laptop or power bank.

USB QUICK CHARGE

USB CONVENIENT CHARGING



1.5 Hours

Charge

180 Minutes

Runtime



- **Cordless Operation:** The trimmer is fully cordless, providing the freedom to move around without being restricted by wires, whether at home or on the go.
- **Multiple Guide Combs:** The kit includes multiple guide combs for different hair lengths, allowing you to customize your cuts. The T-blade has 4 combs, and the hair clipper has 5 combs.

Multiple Guide Combs For Hair Cutting

Hair Glipper



3mm



6mm



9mm



12mm



15mm

T-blade Trimmer



1mm



3mm



5mm



7mm

- **Precision Trimmer:** The precision trimmer attachment is great for detailed grooming, such as mustaches, sideburns, and outlining your beard.

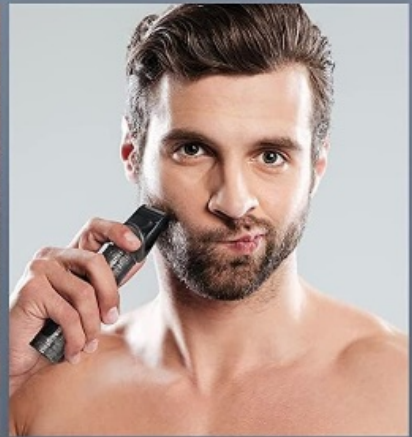
DETACHABLE ATTACHMENTS



Hair Clipper



Beard Trimmer



Micro Shaver



Body Trimmer



Carving Head



Nose Trimmer

- **Micro Shaver:** The micro shaver provides a close, smooth shave for sensitive areas or a clean finish around the edges.
- **Nose Trimmer:** The nose trimmer is specifically designed for safe and easy removal of unwanted nose hair.
- **Body Trimmer:** The body trimmer is ideal for trimming body hair, ensuring a smooth and comfortable shave without irritation.
- **Quick and Easy Setup:** This kit is easy to set up, and no complicated instructions are required—simply charge it and you're ready to go.
- **Compact and Travel-Friendly:** The trimmer kit is lightweight and compact, making it perfect for travel or storage when not in use.

SETUP GUIDE

- **Unbox the Kit:** Check that all components are included—trimmer, attachments, guide combs, USB cable, and cleaning brush.
- **Charge the Trimmer:** Plug in the USB charging cable and allow the trimmer to charge for about 1.5 hours before first use.
- **Select the Desired Comb:** Choose the appropriate guide comb based on your preferred hair length or beard style.
- **Install the T-Blade:** Attach the T-blade securely, adjusting it for fine detailing work on your beard or hairstyle.
- **Attach the Precision Trimmer:** For detailed trimming around the beard or mustache, attach the precision trimmer head.
- **Set Up the Micro Shaver:** For a smooth finish on your face, attach the micro shaver head for the closest shave.
- **Use the Nose Trimmer:** Attach the nose trimmer for trimming nose hairs gently and safely.
- **Use the Body Trimmer:** Attach the body trimmer for trimming body hair, ensuring comfort and safety.
- **Lock the Trimmer:** Press and hold the power button for 3 seconds to lock the trimmer when you're not using it to avoid accidental activation.
- **Check the Battery:** Before use, check the battery level on the trimmer's LCD to ensure it's sufficiently charged.
- **Switch Between Attachments:** When switching between attachments, turn off the trimmer and safely detach and replace the head.
- **Adjust the Taper Lever:** Adjust the taper lever on the clipper to customize the length of the cut.
- **Start with a Low Setting:** Begin trimming with a lower setting and gradually increase the length as needed for a more even result.
- **Test and Adjust:** Before starting a full trim, test the trimmer on a small section of hair to ensure it's cutting as you want.
- **Store Properly:** After use, store the trimmer in a safe, dry place, preferably in its original case, to prevent damage.

CARE & MAINTENANCE

- **Clean After Each Use:** Rinse the detachable blades under water after each use to

remove hair and maintain their sharpness.

- **Lubricate the Blades:** Periodically apply oil to the blades to prevent rust and maintain their sharpness.
- **Dry Thoroughly:** After cleaning, ensure that the trimmer and blades are completely dry before storing to prevent moisture buildup.
- **Charge Regularly:** Even when not in use, charge the trimmer every few weeks to maintain battery health and performance.
- **Store Safely:** Keep the trimmer in a dry, cool place to prevent any damage. Avoid storing it in humid areas.
- **Avoid Overcharging:** Don't leave the trimmer plugged in for long periods after it's fully charged to preserve battery life.
- **Replace Worn Parts:** If any parts, like the blades, become worn or damaged, replace them to ensure optimal performance.
- **Use on Dry Hair:** Always use the trimmer on dry hair to avoid clogging and improve the cutting efficiency.
- **Avoid Dropping:** Handle the trimmer carefully to avoid damaging the motor or blades due to drops.
- **Regularly Check for Hair Build-Up:** Make sure to check the trimmer for hair build-up inside the motor area and clean it out when necessary.
- **Clean Attachments:** Clean the guide combs and attachments regularly to ensure that they stay free from hair debris and dirt.
- **Lock When Not in Use:** Always lock the trimmer to prevent accidental activation when it's stored or in your bag.
- **Charge After Low Battery:** Charge the trimmer when the battery reaches 20% or lower to prevent any interruptions in use.
- **Inspect for Damage:** Periodically check the trimmer for any signs of wear, such as broken parts or malfunctioning blades, and replace them as needed.
- **Store Properly:** Always store the trimmer in a protective case or on a clean surface to prevent accidental damage.

TROUBLESHOOTING

Issue	Possible Cause	Solution
-------	----------------	----------

Issue	Possible Cause	Solution
Trimmer not turning on	The battery is drained or improperly charged	Charge the battery fully before use. Ensure the charging cable is securely plugged in.
The trimmer is pulling hair	Dull blade or incorrect guide comb	Clean the blade, replace it if necessary, and ensure the right guide comb is attached.
Poor cutting performance	Low battery or clogged blades	Recharge the trimmer, clean the blades, and ensure they are free of hair buildup.
Blades are not moving smoothly	Lack of lubrication or debris	Apply a few drops of oil to the blades and clean out any hair or debris.
The trimmer is making loud noises	Motor or blade malfunction	Clean the internal components and check for loose parts.
Battery life is too short	The battery is old or defective	Replace the battery if it no longer holds a charge.
The blades are overheating	Extended use or insufficient cooling	Allow the trimmer to cool down between uses and avoid long grooming sessions.
Trimmer vibrates excessively	Loose internal parts or worn-out components	Tighten any loose parts and ensure the components are properly fitted.
The trimmer head is loose	Loose attachment or broken latch	Ensure all attachments are properly secured and replace any broken components.
The power display is not working	Battery issue or malfunction	Check the battery and recharge. If the problem persists, contact customer support.

PROS & CONS

PROS

- **6-in-1 Versatility:** Includes multiple attachments like a T-blade, body trimmer, and nose trimmer, making it suitable for a range of grooming tasks.
- **Ergonomic Design:** Comfortable to hold, allowing for extended grooming sessions without discomfort.
- **Long Battery Life:** Offers up to 180 minutes of runtime on a 90-minute charge.
- **Sharp T-blade:** Provides precise, clean cuts without pulling hair, making it perfect for beards and sideburns.
- **Detachable & Washable Blades:** Easy to clean, ensuring maintenance is hassle-free.

CONS

- **Charging Time: 90 minutes** of charging time might be long for some users looking for quick power-ups.
- **Size:** The kit may feel bulky for users with smaller hands, especially during longer sessions.
- **Battery Life for Body Trimmer:** The body trimmer attachment offers shorter runtimes compared to the clipper.
- **Not Suitable for Wet Use:** While the blades are washable, the trimmer set is not designed for use in the shower.
- **Plastic Construction:** While durable, the plastic body might not feel as premium as metal options.

WARRANTY

The Hatteker RFC-5618 6-in-1 Beard Trimmer Kit comes with a 1-year warranty from the manufacturer. This warranty covers any defects in materials or workmanship under normal use. If there are any issues within the warranty period, Hatteker offers a replacement or repair, ensuring peace of mind with your purchase. This warranty does not cover damage due to improper use, mishandling, or normal wear and tear.

FREQUENTLY ASKED QUESTIONS

What does the Hatteker RFC-5618 Beard Trimmer Kit include?

The Hatteker RFC-5618 Beard Trimmer Kit includes a T-blade trimmer, hair clipper, precision trimmer, micro shaver, nose trimmer, body trimmer, 9 guide combs, a cleaning brush, USB cable, and a hair comb.

How long does it take to charge the Hatteker RFC-5618 Beard Trimmer Kit?

The Hatteker RFC-5618 Beard Trimmer Kit has a charging time of 1.5 hours, and it provides up to 180 minutes of runtime after a full charge.

What is the power source for the Hatteker RFC-5618 Beard Trimmer Kit?

The Hatteker RFC-5618 Beard Trimmer Kit is powered by a lithium-ion battery, providing long-lasting performance for cordless use.

What makes the T-blade in the Hatteker RFC-5618 Beard Trimmer Kit special?

The T-blade in the Hatteker RFC-5618 is made of zero-gapped manganese steel, providing precise trimming for haircuts, beards, sideburns, and detailed artwork.

How do I adjust the cutting length on the Hatteker RFC-5618 Beard Trimmer Kit?

The Hatteker RFC-5618 offers adjustable cutting lengths using the guide combs for both the T-blade trimmer and hair clipper, with lengths ranging from 1mm to 15mm.

How do I lock the trimmer on the Hatteker RFC-5618 Beard Trimmer Kit?

There is no lock feature on the Hatteker RFC-5618. However, you can turn off the device after use to avoid accidental activation.

What should I do if the Hatteker RFC-5618 Beard Trimmer Kit is not turning on?

If the Hatteker RFC-5618 is not turning on, ensure that it is fully charged. If the issue persists, check the power button and make sure it's functioning correctly. If not, contact customer support.

References

- [User Manual](#)

ul>

🔑 6-in-1 Beard Trimmer Kit, B0BGH2QC2J, HATTEKER, Hatteker RFC-5618, RFC-5618, user

📁 HATTEKER manual

Leave a comment

Your email address will not be published. Required fields are marked *

Comment *

Name

Email

Website

☐ Save my name, email, and website in this browser for the next time I comment.

[Post Comment](#)

Search:

[Search](#)

[Manuals+](#) | [Upload](#) | [Deep Search](#) | [Privacy Policy](#) | [@manuals.plus](#) | [YouTube](#)

This website is an independent publication and is neither affiliated with nor endorsed by any of the trademark owners. The "Bluetooth®" word mark and logos are registered trademarks owned by Bluetooth SIG, Inc. The "Wi-Fi®" word mark and logos are registered trademarks owned by the Wi-Fi Alliance. Any use of these marks on this website does not imply any affiliation with or endorsement.