



HATCH Restore Sound Machine Smart Light User Guide

[Home](#) » [Hatch](#) » HATCH Restore Sound Machine Smart Light User Guide 



Let's Set You Up
For Great Sleep

Step 1

Plug-In Hatch Restore

Connect your power cable then plug it into your power outlet. Always keep your device plugged in.



Step 2

Download the Hatch Sleep App

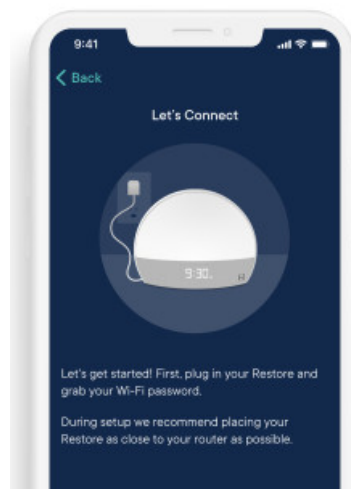
Download the app on your phone or tablet then create an account.



Step 3

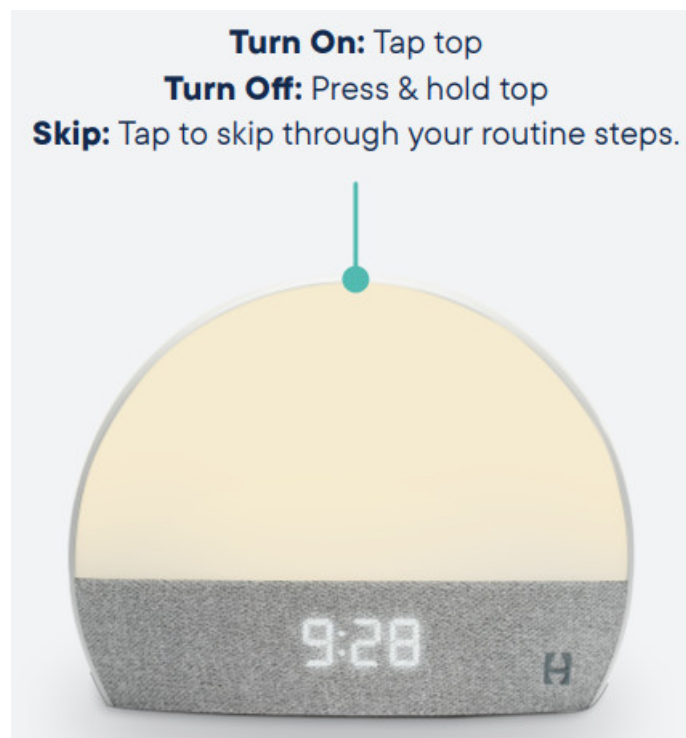
Complete Setup

Follow the steps in the Hatch Sleep app to connect your device. Wi-Fi is required.

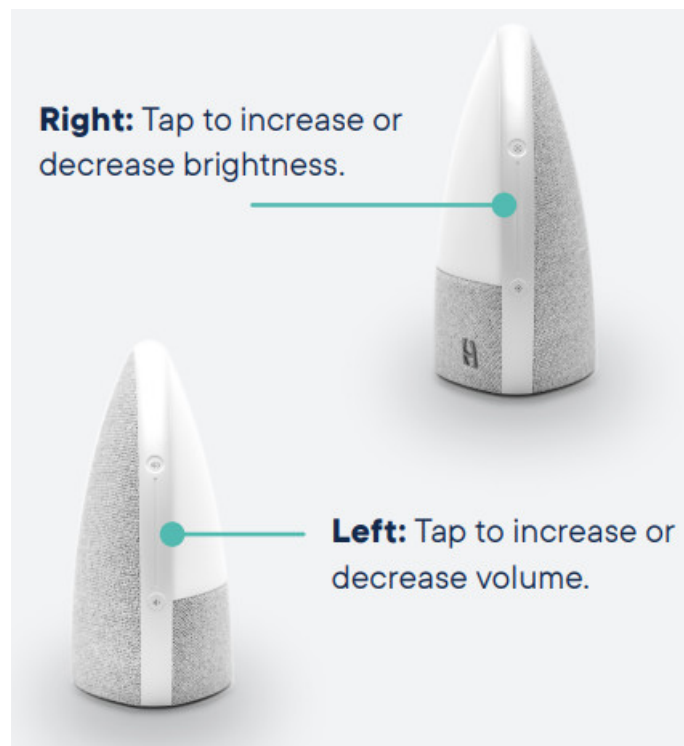


Get to know your Hatch Restore

Top Touch Sensor



Side Controls



Contents

[1 Quick Tips](#)

[2 Documents /
Resources](#)

[3 Related Posts](#)

Quick Tips



Alarm

The dot next to the time indicates your alarm is on. Use the app or the alarm button on the bottom of Restore to turn your alarm on or off.

Wish to snooze? Tap the top of Restore for another 9 mins!



Clock Brightness

Dim or turn off the clock in the app. Visit Clock Display under Settings.

FCC Caution: Any Changes or modifications not expressly approved by the party responsible for compliance could void the user's authority to operate the equipment. This device complies with part 15 of the FCC Rules. Operation is subject to the following two conditions: (1) This device may not cause harmful interference, and (2) this device must accept any interference received, including interference that may cause undesired operation.

IMPORTANT NOTE: This equipment has been tested and found to comply with the limits for a Class B digital device, pursuant to part 15 of the FCC Rules. These limits are designed to provide reasonable protection against harmful interference in a residential installation. This equipment generates, uses, and can radiate radio frequency energy and, if not installed and used in accordance with the instructions, may cause harmful interference to radio communications. However, there is no guarantee that interference will not occur in a particular installation. If this equipment does cause harmful interference to radio or television reception, which can be determined by turning the equipment off and on, the user is encouraged to try to correct the interference by one or more of the following measures:

- Reorient or relocate the receiving antenna.
- Increase the separation between the equipment and receiver.
- Connect the equipment into an outlet on a circuit different from that to which the receiver is connected.
- Consult the dealer or an experienced radio/TV technician for help.

FCC Radiation Exposure Statement: This equipment complies with FCC radiation exposure limits set forth for an uncontrolled environment.ISED C Warning This device complies with Innovation, Science, and Economic Development Canada licence-exempt RSS standard(s). Operation is subject to the following two conditions: (1) this device may not cause interference, and (2) this device must accept any interference, including interference that may cause undesired operation of the device.

Need help?
Hatch support is a dream.
Contact us at support@hatch.co.



Follow @hatchforsleep and see what dreams are made of.

Documents / Resources

A thumbnail image of the user guide for the Hatch Restore Sound Machine Smart Light. It features a dark blue header with the text 'Let's Set You Up For Great Sleep' and several small images of the device in different states.	<p>HATCH Restore Sound Machine Smart Light [pdf] User Guide Restore Sound Machine Smart Light</p>
--	---