



HAT Design Works ENVOY 1 Envoy Articulating Monitor Arm Instruction Manual

[Home](#) » [HAT Design Works](#) » HAT Design Works ENVOY 1 Envoy Articulating Monitor Arm Instruction Manual



Contents

- [1 HAT Design Works ENVOY 1 Envoy Articulating Monitor Arm](#)
- [2 What in The Box](#)
- [3 Installation Instructions](#)
- [4 MAINTENANCE](#)
- [5 CONTACT](#)
- [6 Documents / Resources](#)
 - [6.1 References](#)
- [7 Related Posts](#)



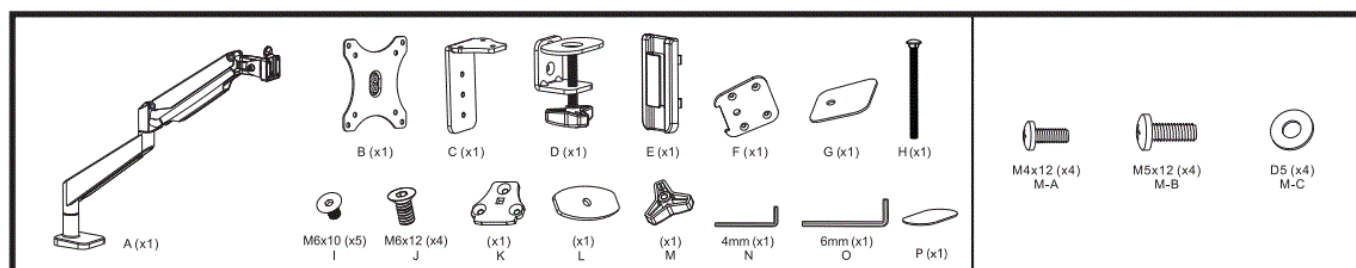
HAT Design Works ENVOY 1 Envoy Articulating Monitor Arm



Info

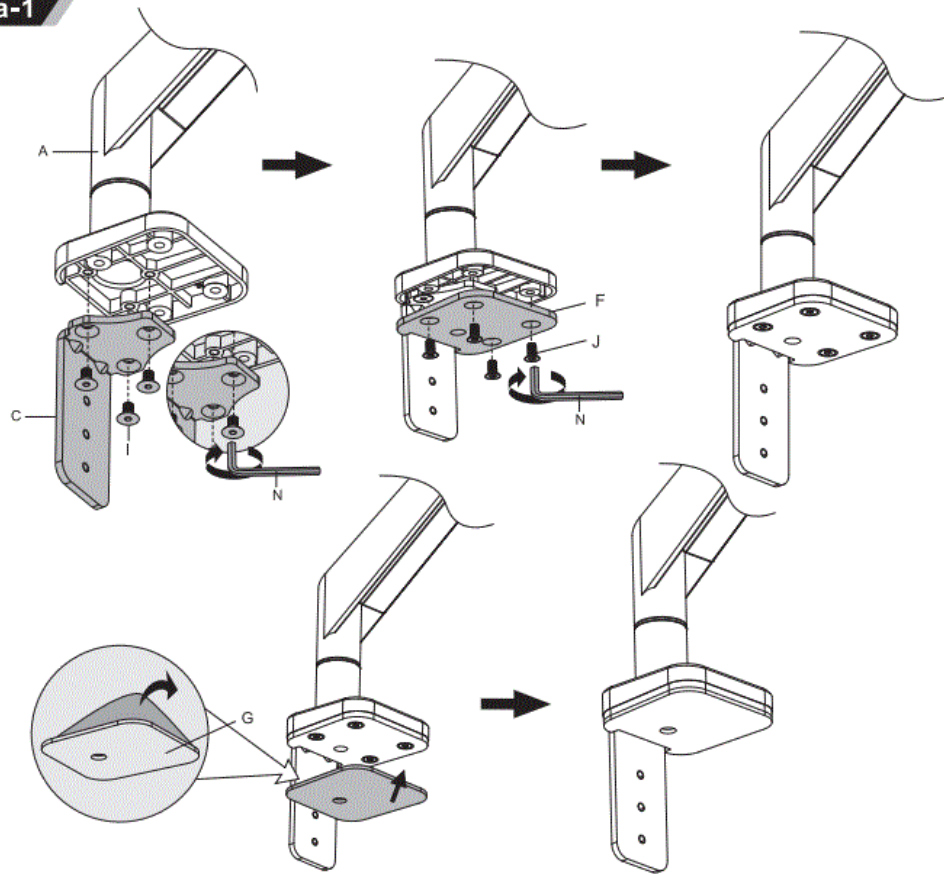


What in The Box

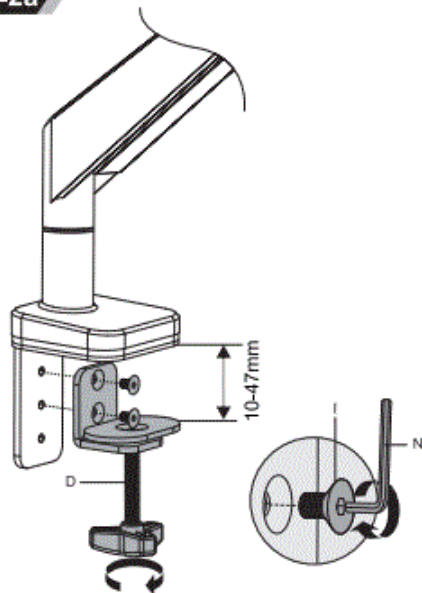


Installation Instructions

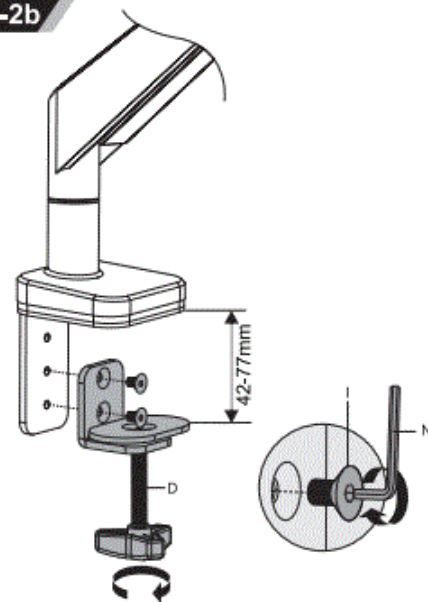
1a-1



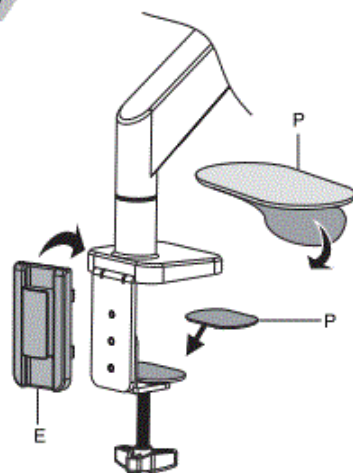
1a-2a



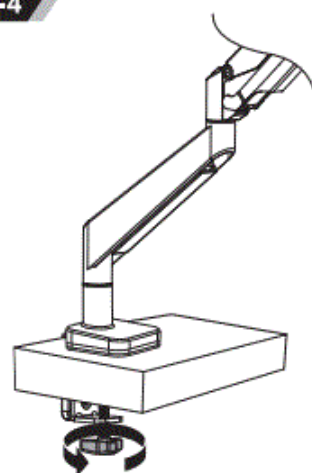
1a-2b



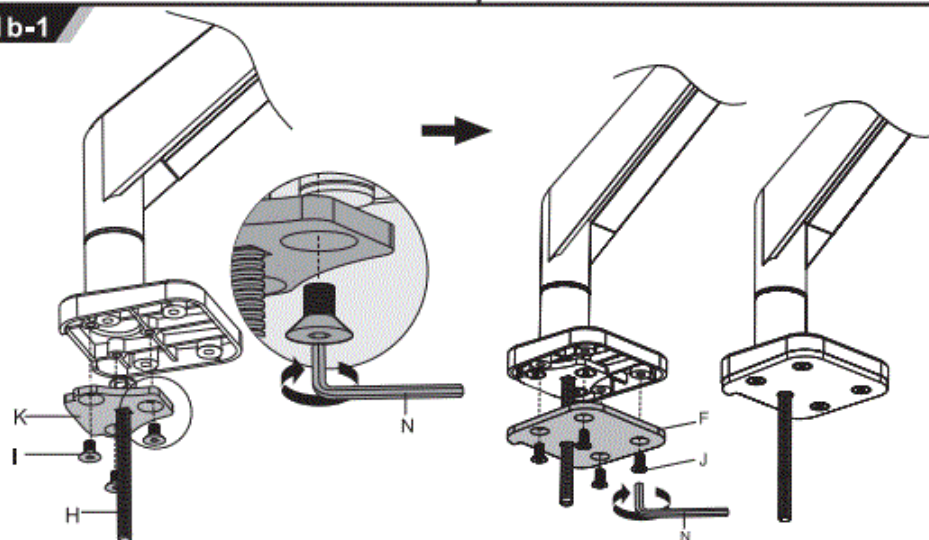
1a-3

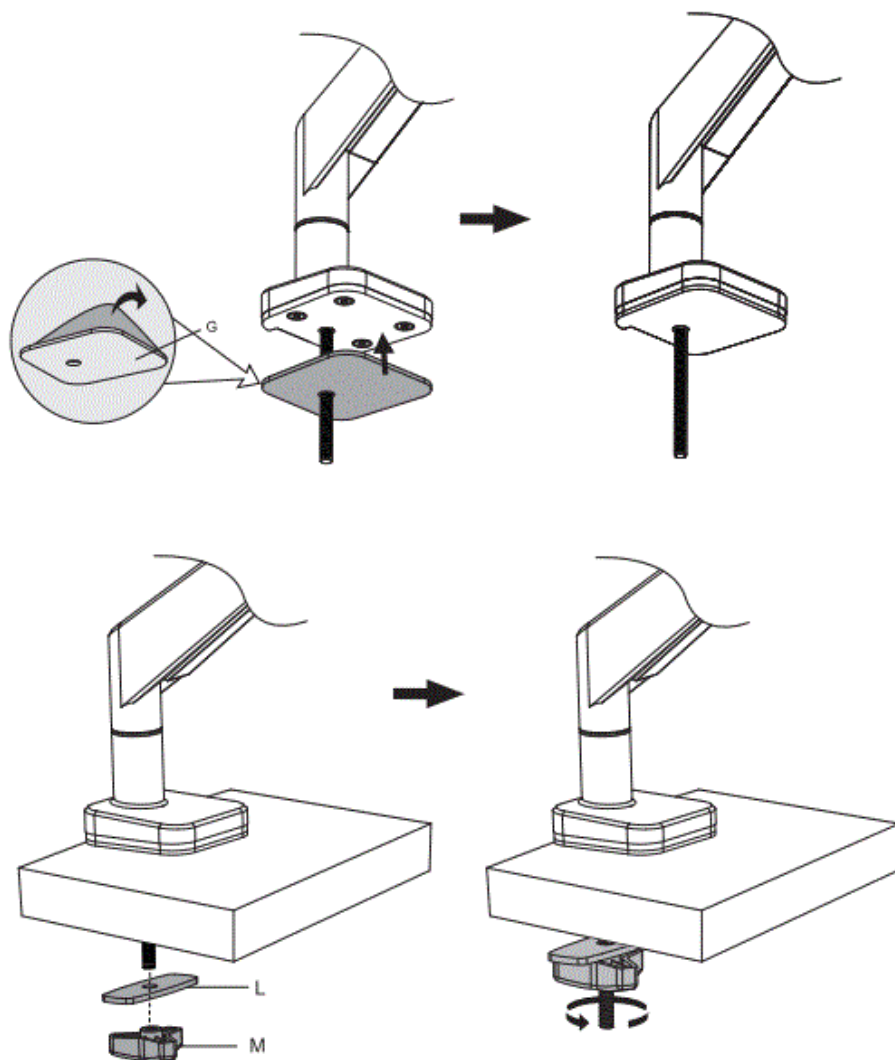


1a-4

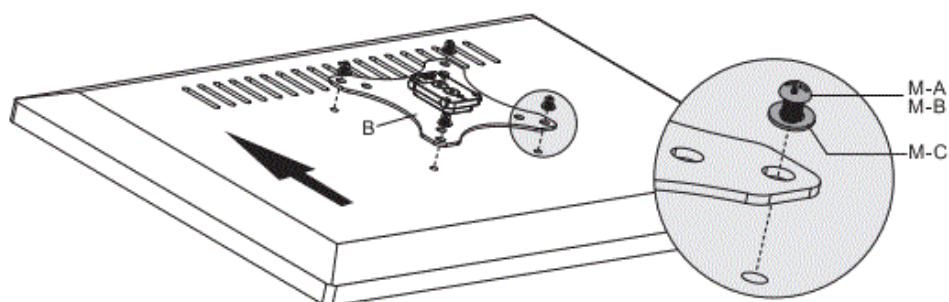
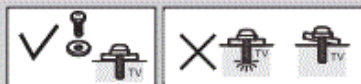


1b-1

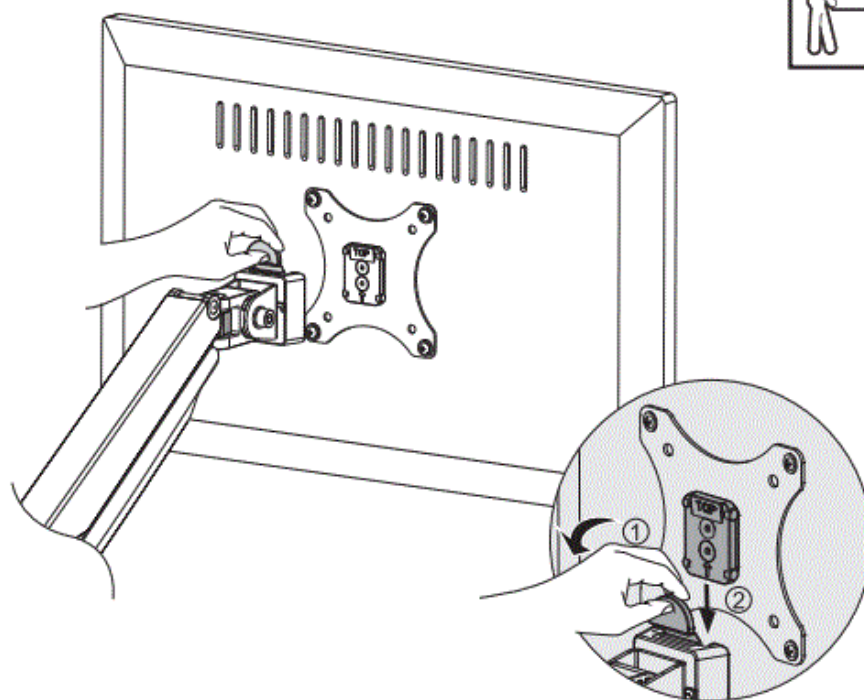




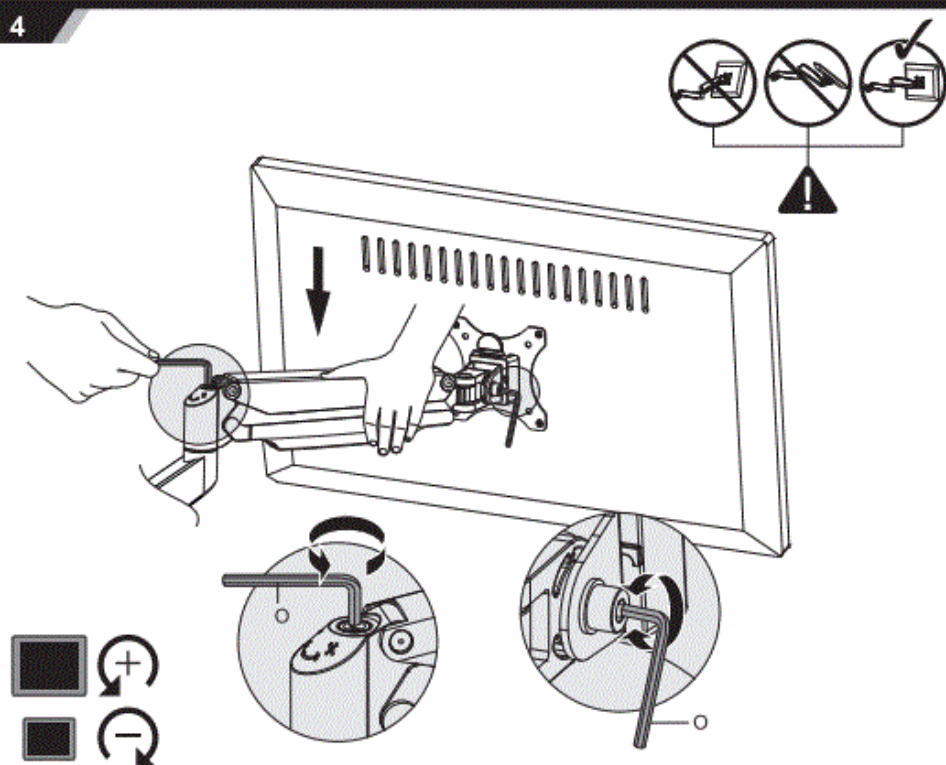
2



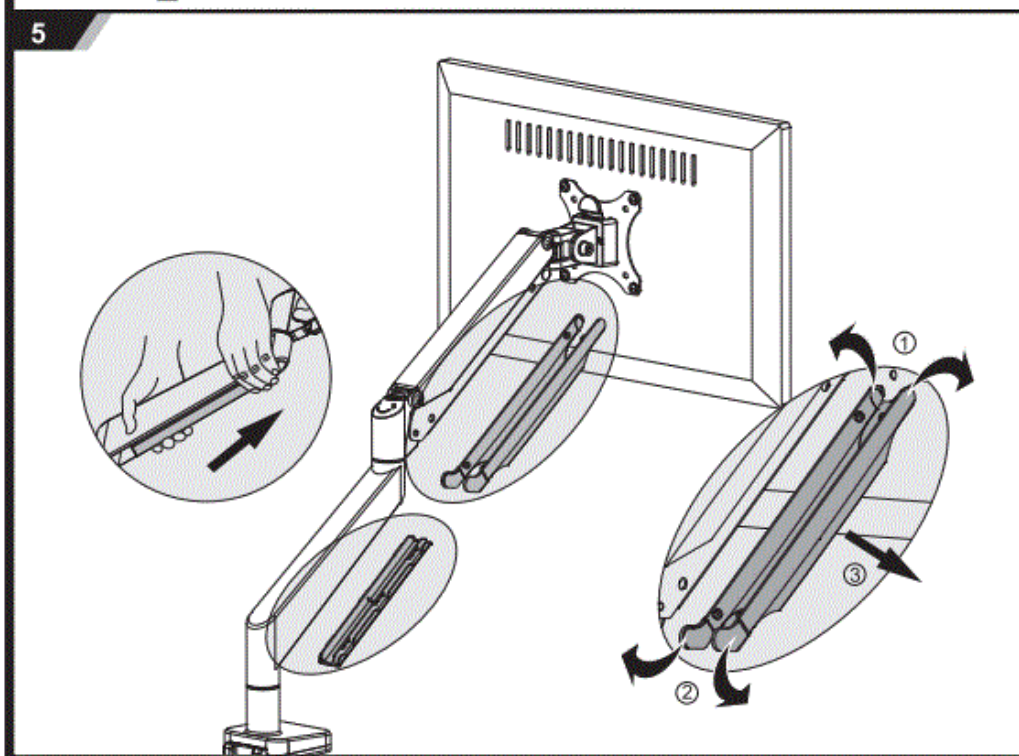
3

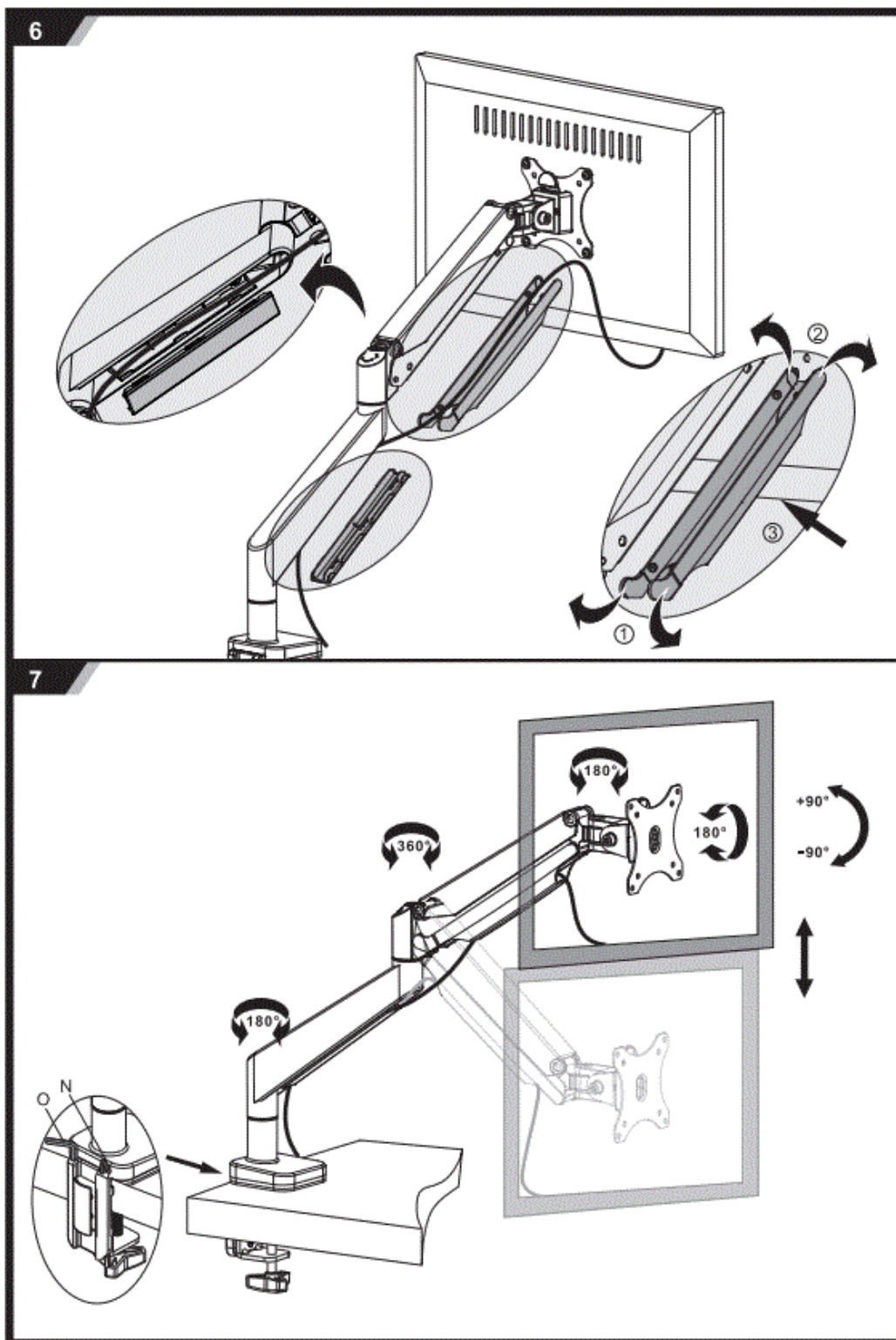


4



5





Read the entire instruction manual before you start installation and assembly. If you have any questions regarding any of the instructions or warnings, please contact your local distributor for assistance.

CAUTION: Use with products heavier than the rated weights indicated may result in instability causing possible injury. It must be attached as specified in assembly instructions, improper installation may result in damage or serious personal injury.

- Safely tie the rope to a must be safe off file if no tie a full haler the pulping and on I attached hardware and components.
- Use the mounting screws provided and DO NOT OVER-TIGHTEN mounting screws
- This product contains small items that could be a choking hazard if swallowed. Keep these items away from

children.

- This product is intended for indoor use only. Using this product outdoors could lead to product failure and personal injury.

IMPORTANT: Ensure that you have received all parts according to the component checklist prior to installation. If any parts are missing or faulty, telephone your local distributor for a replacement.

MAINTENANCE

- Check that the bracket is secure and safe to use at regular intervals (at least every three months).

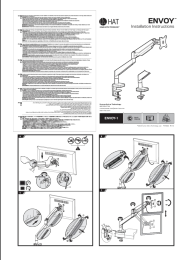
CONTACT

Human Active Technology



- 800 524 2744
- customerservice@team-hat.com
- team-hat.com

© 2022 Human Active Technology, LLC P515022 REV D

Documents / Resources

	<p>HAT Design Works ENVOY 1 Envoy Articulating Monitor Arm [pdf] Instruction Manual ENVOY 1 Envoy Articulating Monitor Arm, ENVOY 1, Envoy Articulating Monitor Arm, Articulating Monitor Arm, Monitor Arm, Arm</p>
---	---

References

-  [Pacific Coast Company HaT Toys](#)
-  [Home - Human Active Technology](#)