



HASWING 1.6, 50806 Remote Controller Instruction Manual

[Home](#) » [HASWING](#) » HASWING 1.6, 50806 Remote Controller Instruction Manual 

HASWING 1.6, 50806 Remote Controller Instruction Manual



Contents

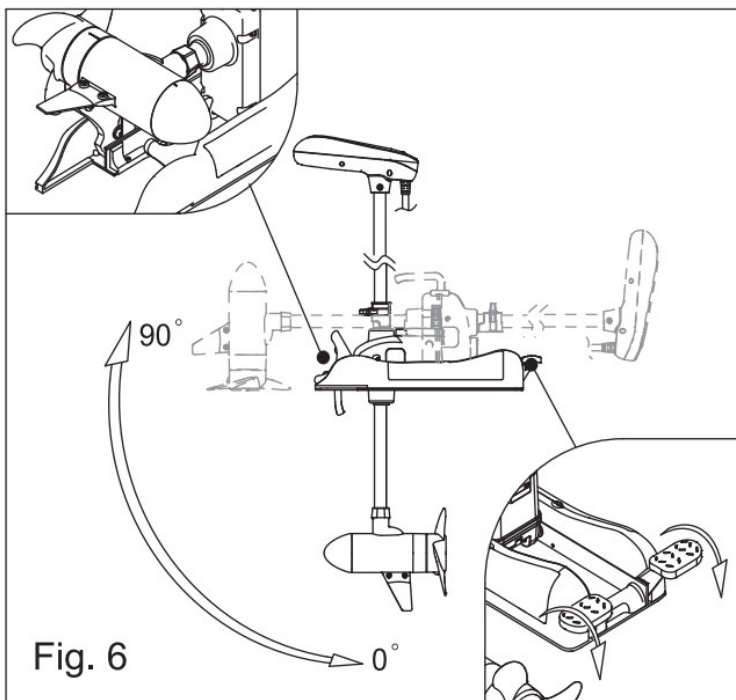
- [1 Correct operation of the motor](#)
- [2 Documents / Resources](#)
- [3 Related Posts](#)

Correct operation of the motor

1. Deploying and stowing the motor

Deploying the motor

Press the stow/deploy foot pedal and gently lower the motor taking care to align the lower part of the Depth Collar with the Steering Collar. **(Fig. 6)**



Stowing the motor

Press the stow/deploy foot pedal, grab the handle, head or shaft of the motor, lift and retract , sliding back horizontally until the motor clicks into the cradle.



WARNING:

When raising or lowering, keep fingers clear of all hinges and pivot points.



WARNING:

The shaft of the Cayman slides smoothly making it easy to deploy and stow. Do NOT let the motor free-fall when deploying, but gently lower into position, otherwise damage can occur to the Steering Collar.

2. Adjusting the motor's depth

Whilst holding the motor by the shaft to prevent it from accidentally sliding, loosen the nut on the Depth Collar and lower the motor to the required depth. Tighten the nut to secure. **(Fig. 7)**

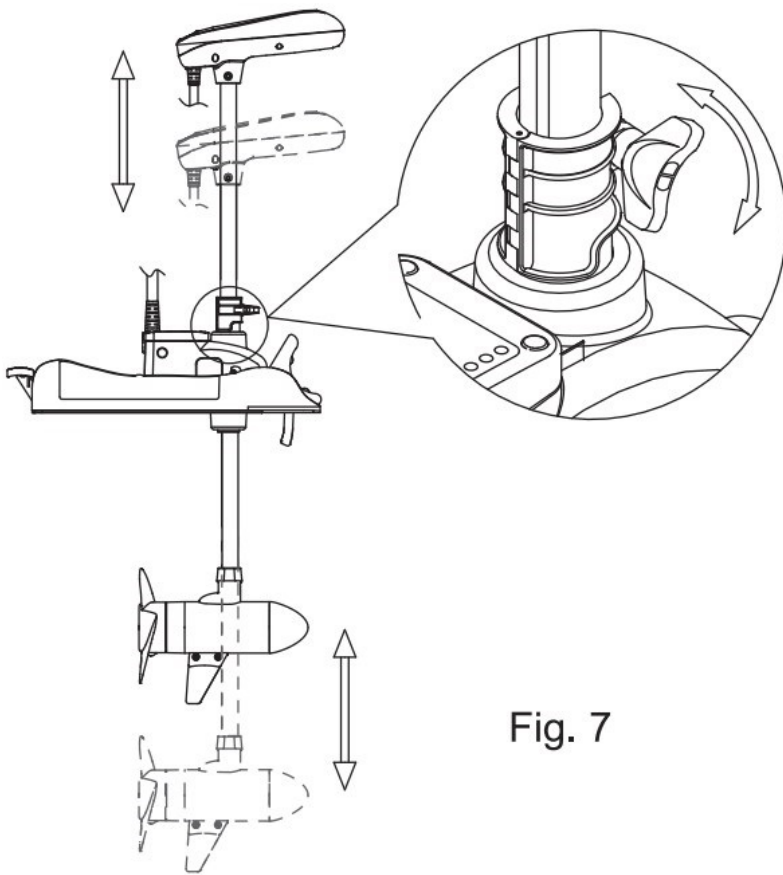


Fig. 7



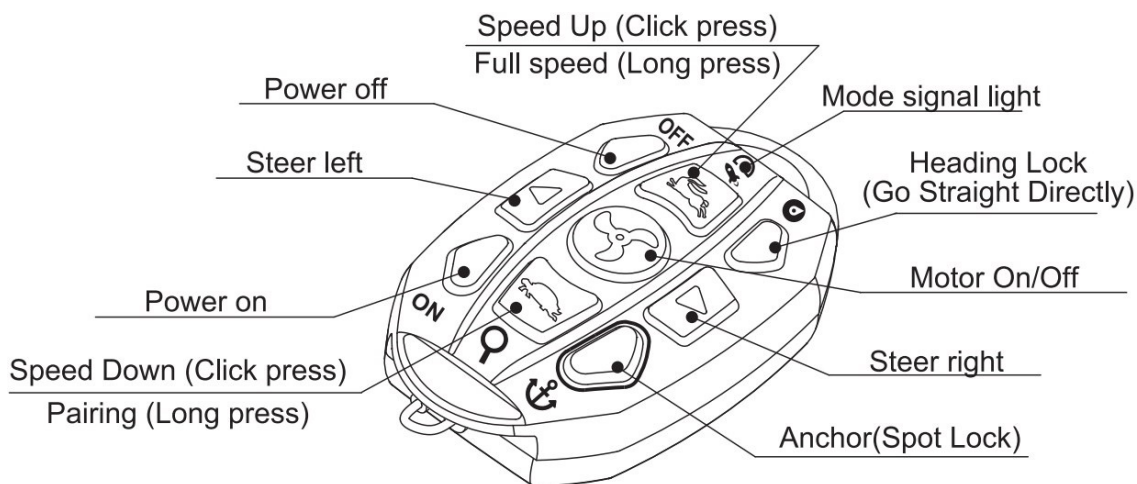
WARNING:

When towing the boat with the trolling motor in place, ALWAYS lock the Depth Collar against the gearbox and support the shaft near the head.



SUGGESTION

When first using the motor, find the correct depth for general fishing conditions and using a permanent marker, place a mark at the top of the Depth Collar so you can easily set the depth when you next go fishing.

3. Remote control buttons



4. Pairing remote to motor

Press and hold  below the battery status lights on the motor (**Fig. 8**) and  (also the Slower button) on the remote at the same time for three (3) seconds or until you hear 3 beeps indicating that connection has been made and the remote and motor are paired. Release fingers from both buttons.

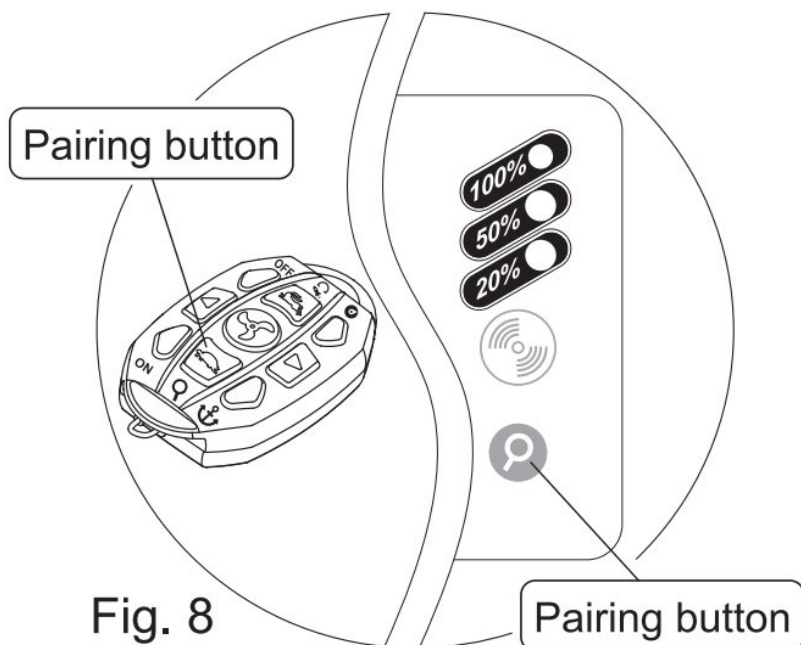



Fig. 8

5. Mode signal light

1. Press the "ON" button, indicator light is on solid or flashes, remote control is on "standby" state.
2. Press any button on the remote control, red indicator light flashes, indicating signal is sending.
3. Select  button, light is two-tone pink/purple, indicating motor is in the anchor (spot lock) mode.
4. Press "OFF" button to turn of remote control. Light is now off. **(Fig. 9)**

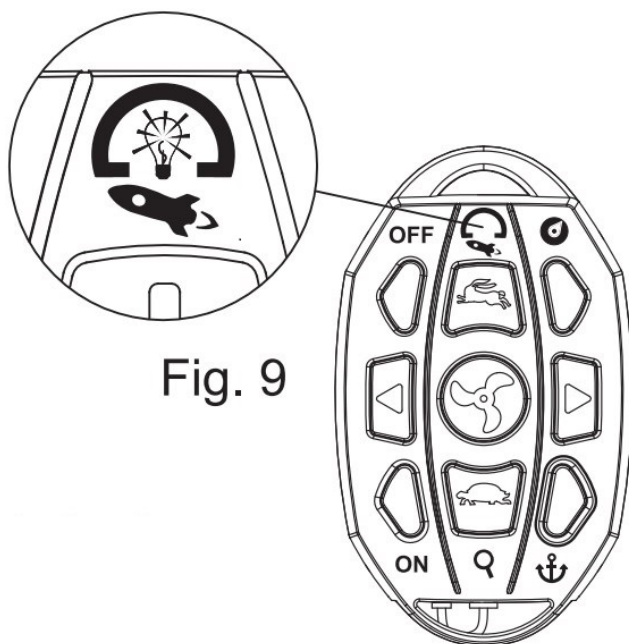


Fig. 9

NOTE:

If your press the "OW button and there is no indicator light or is solid red, please recharge the remote control as the battery is flat.

6. Speed control

Press  to active motor,click press  or  to adjust motor speed.

To switch to full speed () please Long press  Press  again to stop motor. **(Fig.10)**

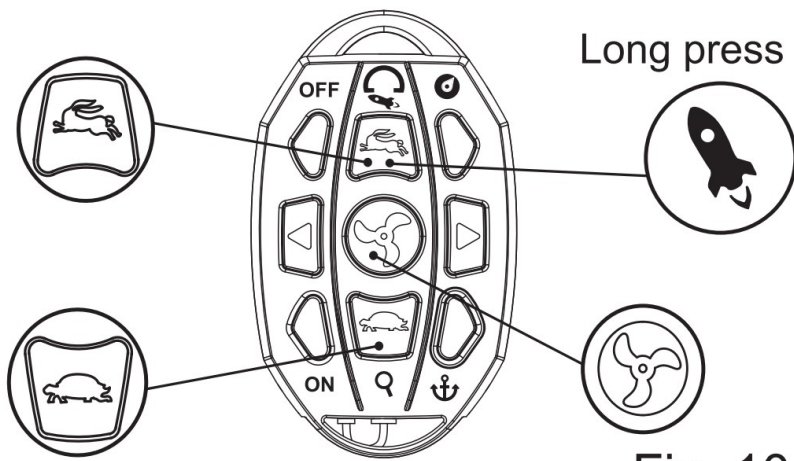
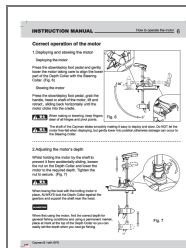


Fig. 10

Documents / Resources



[HASWING 1.6, 50806 Remote Controller](#) [pdf] Instruction Manual
1.6 50806 Remote Controller, 1.6 50806, Remote Controller, Controller