



HASWILL ELECTRONICS Hastat Software for Digital Data Loggers User Manual

[Home](#) » [HASWILL ELECTRONICS](#) » HASWILL ELECTRONICS Hastat Software for Digital Data Loggers User Manual 

HASWILL ELECTRONICS Hastat Software for Digital Data Loggers



Contents

1 Interface Language

2 Latest Data

2.1 Latest Data – Summary Info

2.2 Latest Data – Curve Graph

2.3 Latest Data – original data

3 Configuration

3.1 Basic Configuration Mode

3.2 Advanced Configuration Mode

3.2.1 Section 1

3.2.2 Section 2

3.2.3 Section 3

3.2.4 Section 4

4 All Data Records

4.1 All Records – Temperature Curve/Chart

4.2 All Records – Temperature Statistic

4.3 All Records – Temperature Data List / Original Data

5 Documents / Resources

5.1 References

6 Related Posts

Interface Language

The default language of this datalogger software is Chinese; just need a few clicks to show it in English; the steps as follow:



Only Chinese and English available.

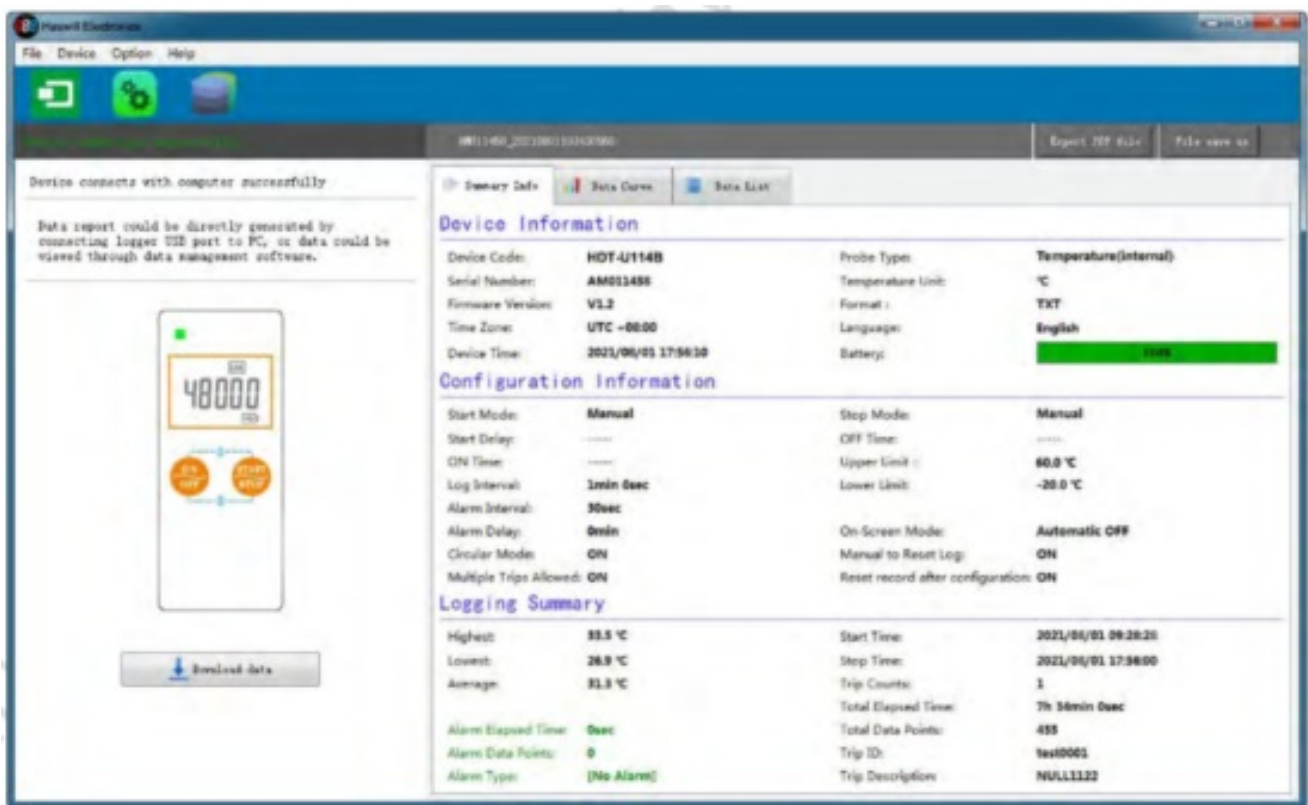
Latest Data

Once running this tool, it will detect the USB Datalogger and read the data, and plot a curve automatically. This data processing may spend 10s to 5 minutes according to the size of the data volume. Once data ready, you will find 3 tabs that show the latest data

Latest Data – Summary Info

You will find the below content from the above interface

- Device Information
- Configuration Information
- Logging Summary

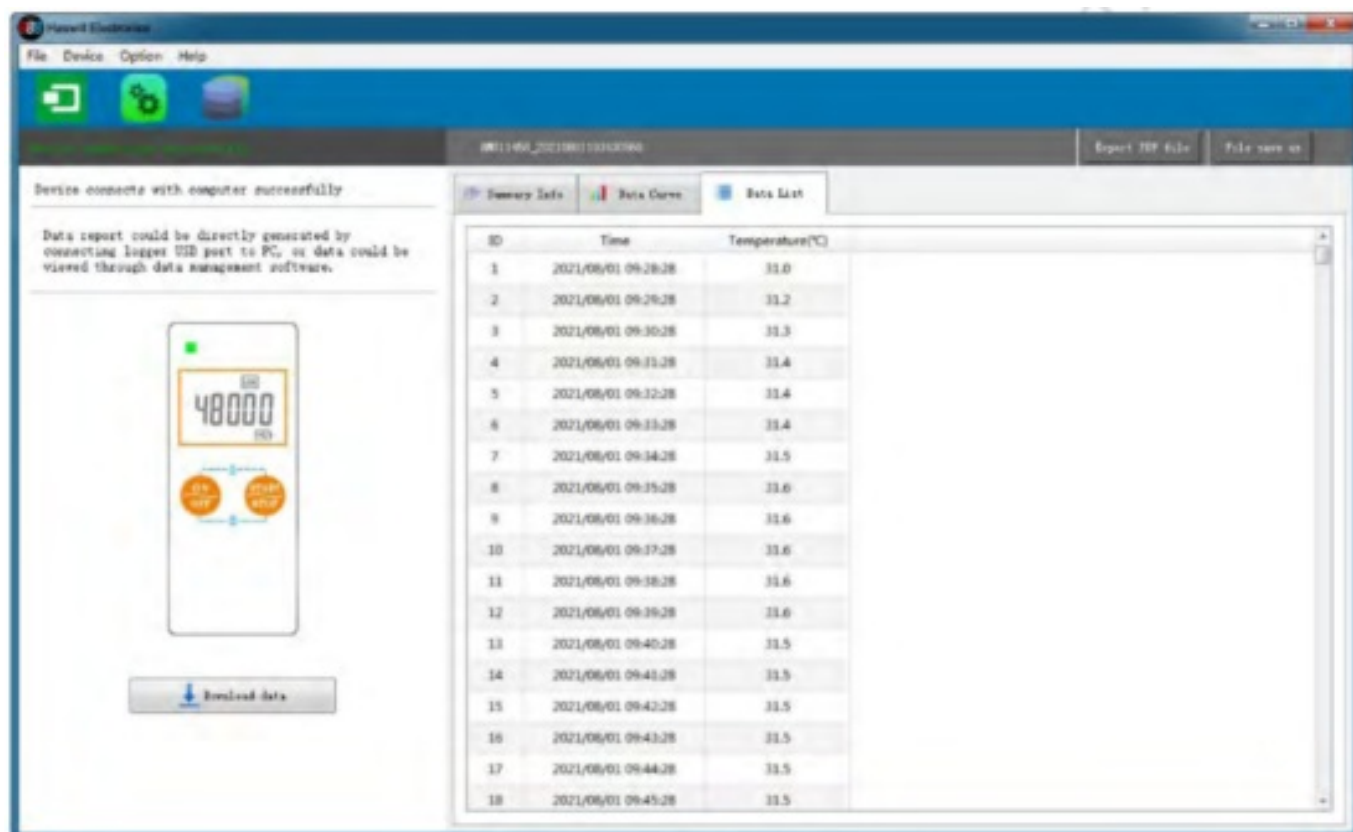


Latest Data – Curve Graph



Scroll the mouse to zoom in/out the graph.

Latest Data – original data



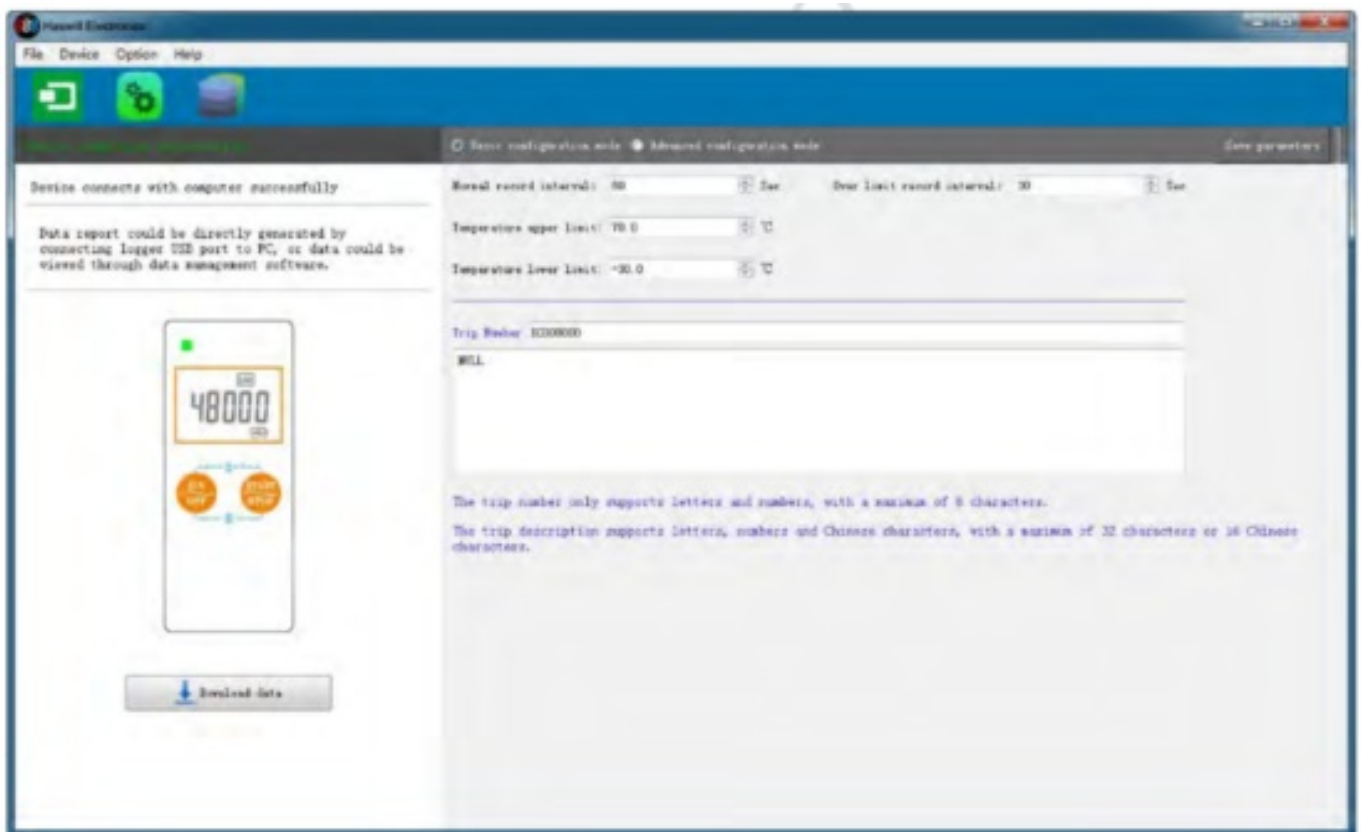
Max records 48,000 Groups Default Records each minitue 5 / 11

Configuration

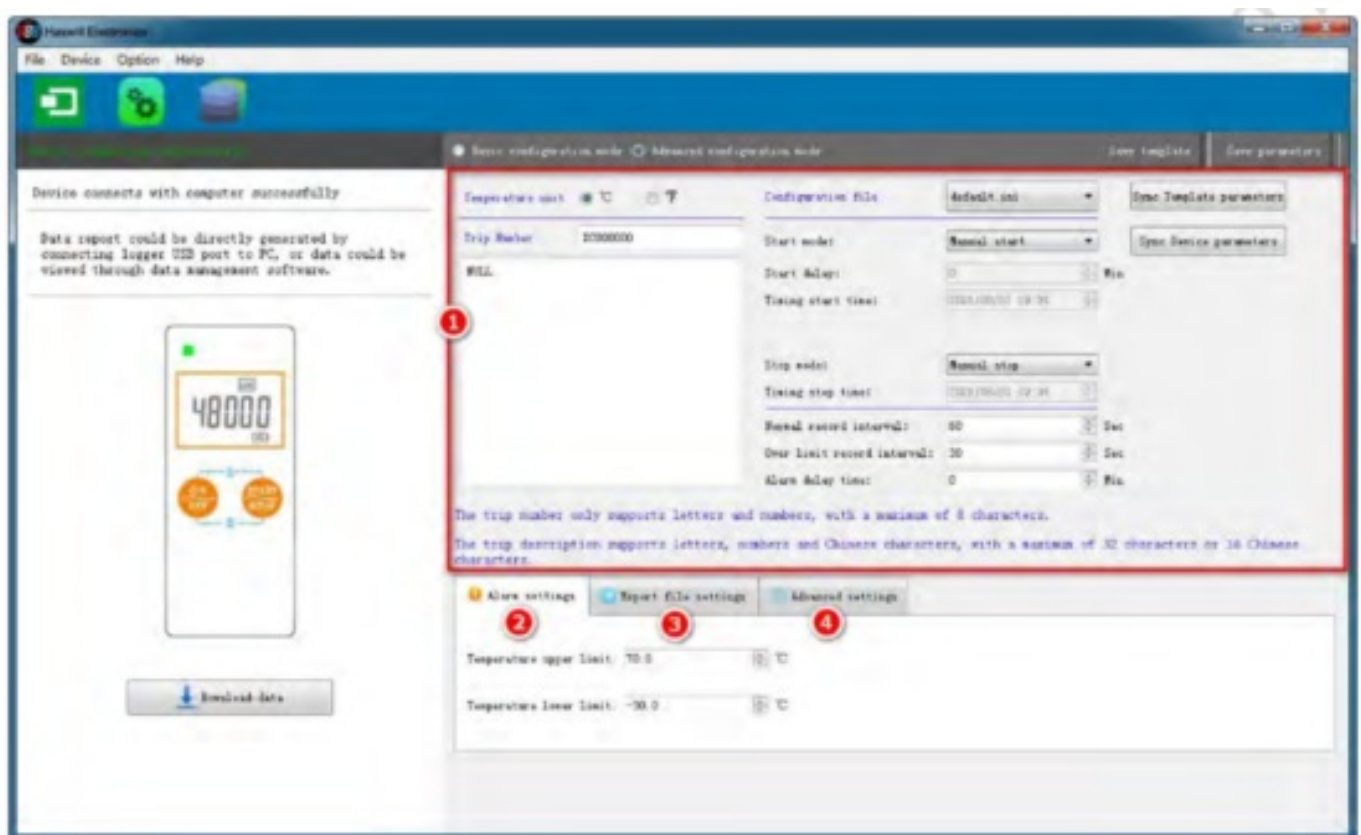
With this software, you may change the default parameters, the frequently-used parameters in the “Basic Mode” and others in advance mode.

Basic Configuration Mode

Items	Description
Normal Record Interval	min 10s, max 24 hours, step 10s.
Over Limit Record Interval	The record period once finds temperature over the limitation, min 10s, max 24 hours, step 10s.
Temperature Upper Limit	To define the range in which means acceptable, out of which adopts the “Over Limit Record Interval.”
Temperature Lower Limit	



Advanced Configuration Mode



Section 1

Change the temperature unit.

- ✓ Give a trip name
- ✓ Select the start mode:

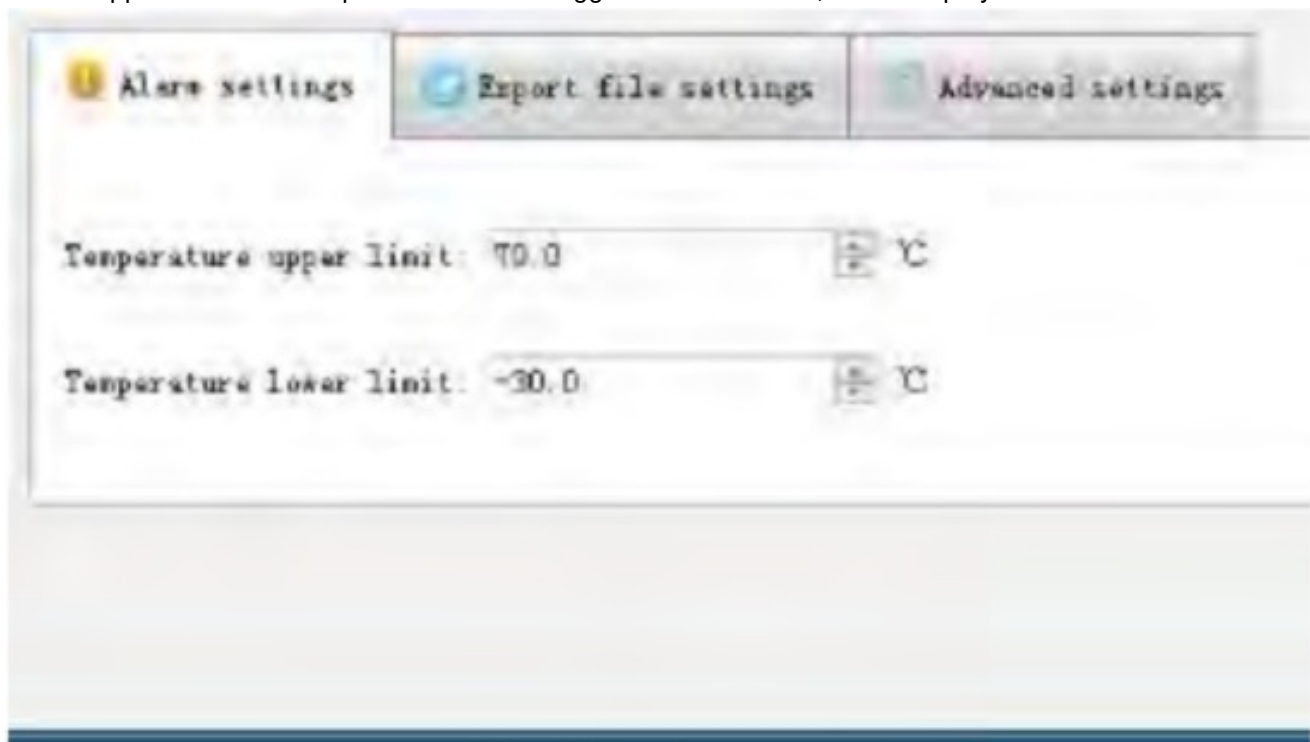
- ✓ Manual start
- Key time-delay start (start delay time editable)
- Timing start
- Always start

There are 4 sections on this viewport

- ✓ Set the stop mode:
 - Manual Stop
 - Timing Stop
- ✓ Set the “Normal Record Interval time “ and the “Over Limit Record Interval time” like what you can do on the basic configuration mode, and there is an extra option that only exists here, that is “Alarm Delay time.

Section 2

Set the upper and lower temperature limits to trigger the visible alert, which displays an icon.



Section 3

Set the language and the file format of the temperature record report. It is the **Report** Language here, not indicates the software interface language.

Alarm settings Export File settings Advanced settings

Report language

☐ Chinese ☒ English

Export File type: TXT

Section 4

Items	Options & Description
Circular log	Stops or Circular when reach max records
Multiple start	Disable (Default)/Enable
LCD always on	Always on or Timing off, default auto-dim in 25s.
Clear saved record	No clear or Clear
Clear data by long press	Disable/Enable

Alarm settings Export File settings Advanced settings

Circular log: Full capacity stop Clear saved record: No clear

Multiple start: Disable Clear data by long press key: Disable

LCD always on: Always on

All Data Records

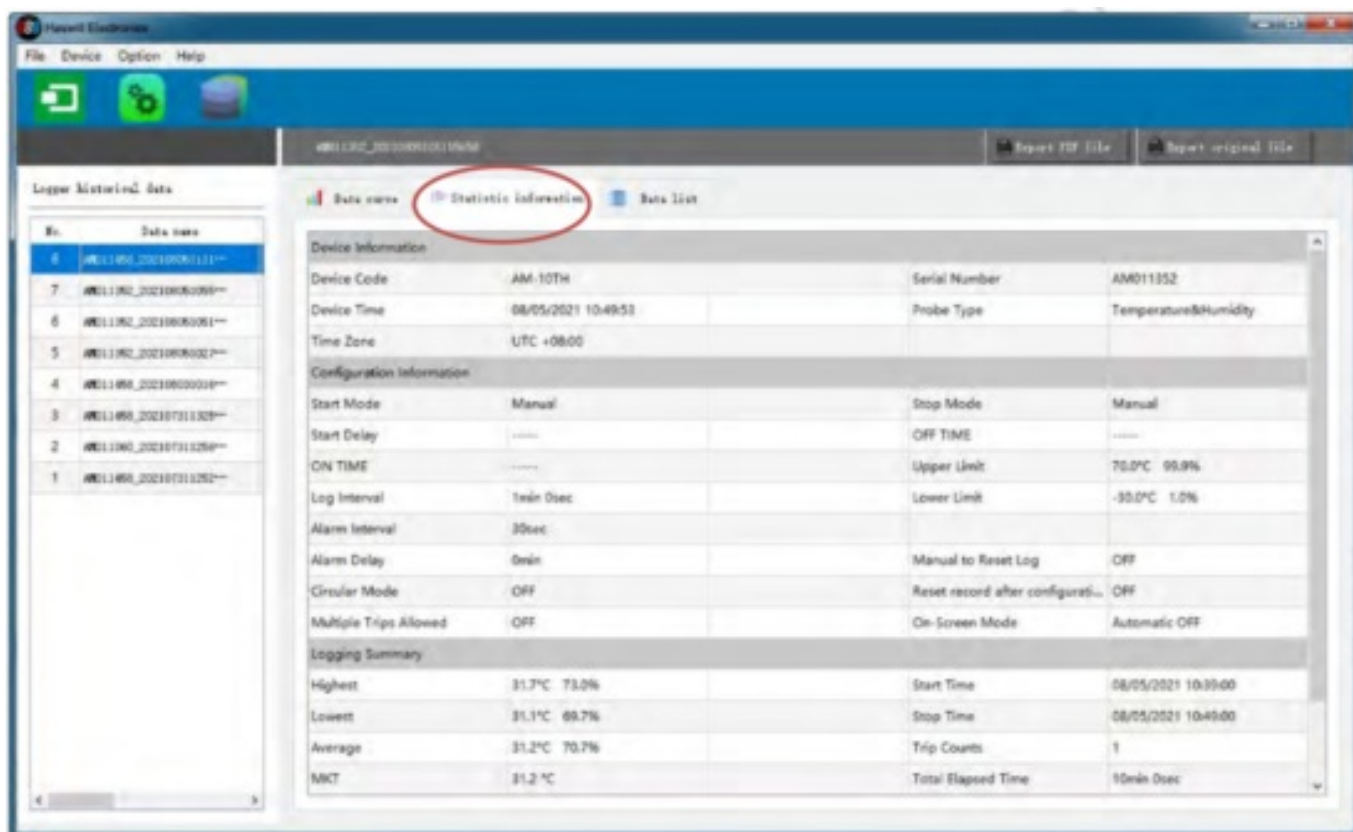
This tab shows all the saved data in a datalogger.

All Records – Temperature Curve/Chart

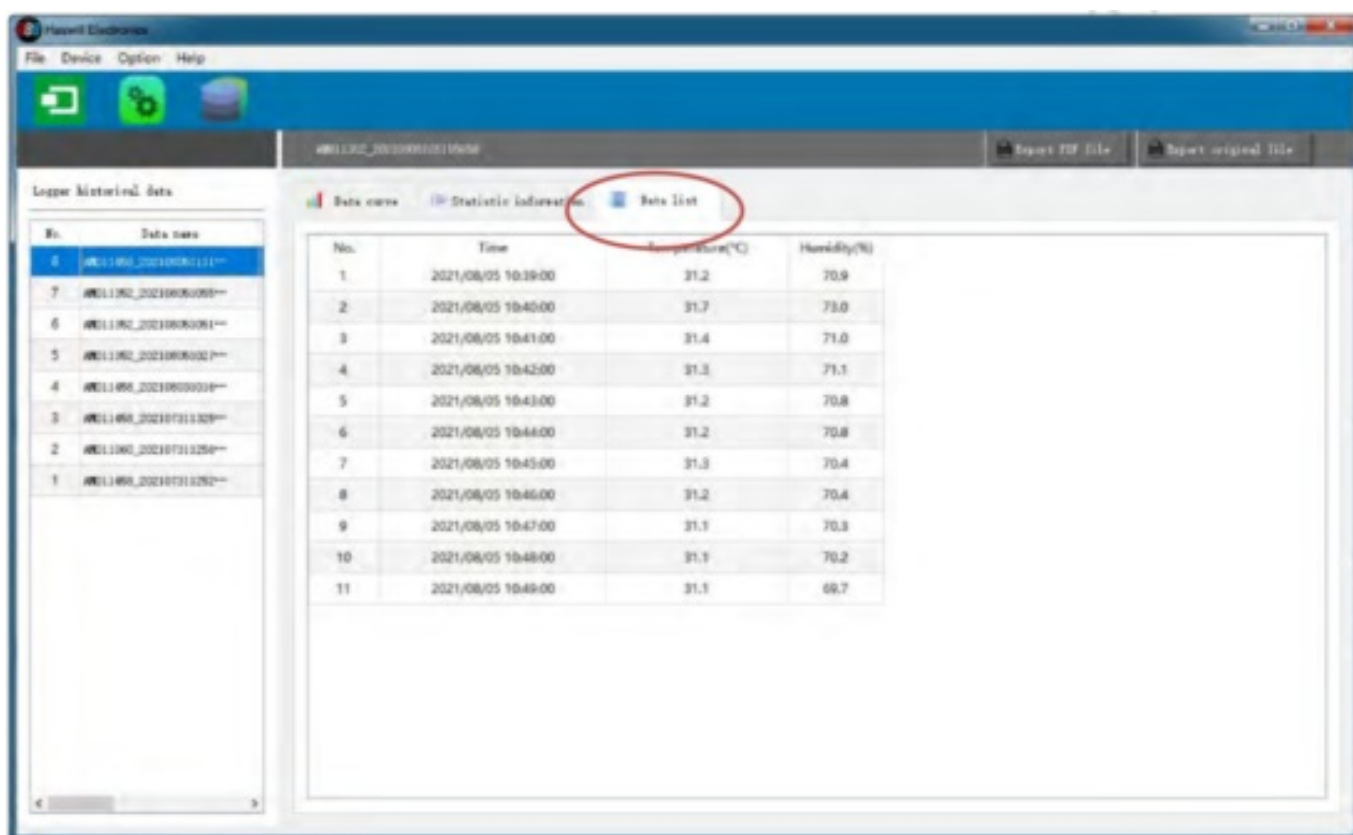
Just **double-click** one of the records from the left column, then you will get the corresponding statistics, curve graph, and the original detailed data list.



All Records – Temperature Statistic



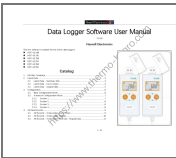
All Records – Temperature Deta List / Orignal Data



Thanks!

<https://www.thermo-hygro.com>

Documents / Resources



[HASWILL ELECTRONICS Hastat Software for Digital Data Loggers](#) [pdf] User Manual
HDT-U114B, HDT-U114E, HDT-U115B, HDT-U115E, HDT-U135B, HDT-U135E, Hastat Software for Digital Data Loggers

References

-  [Haswill Electronics - An exporter of digital temperature devices from China](#)