



## **HARVIA HPC(S)7U1H Embedding flange with LED Lights Instruction Manual**

[Home](#) » [HARVIA](#) » HARVIA HPC(S)7U1H Embedding flange with LED Lights Instruction Manual 

# ***HARVIA***

**HPC(S)7U1H Embedding flange with LED Lights  
Instruction Manual**



### **Contents**

**1** [HPC\(S\)7U1H Embedding flange with LED  
Lights](#)

**2** [Documents / Resources](#)

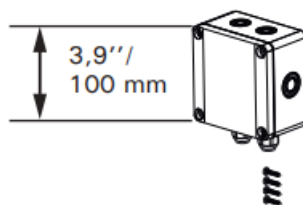
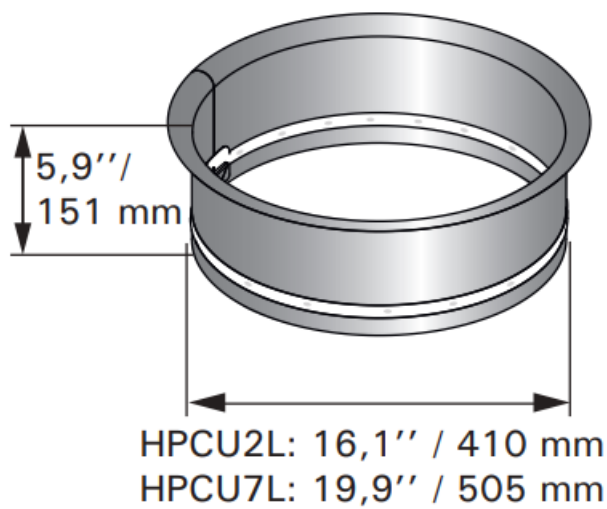
**HPC(S)7U1H Embedding flange with LED Lights**

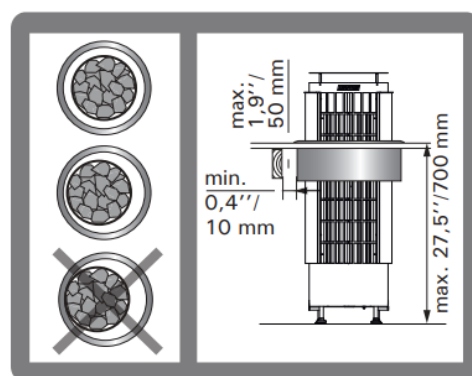
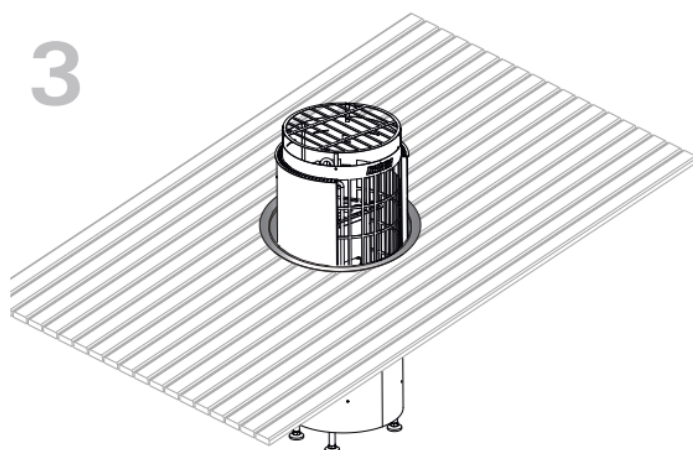
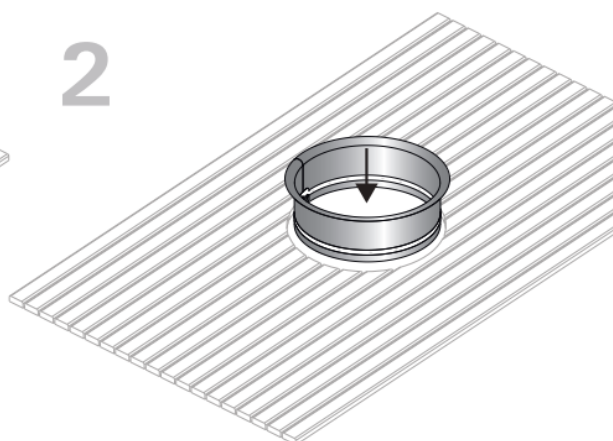
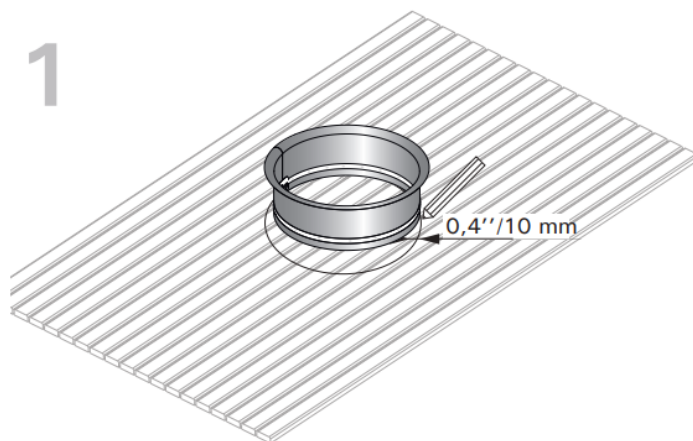
**HPCU2L/HPCU7L**

Embedding flange  
with LED lights  
3000-3200 K  
Warm white

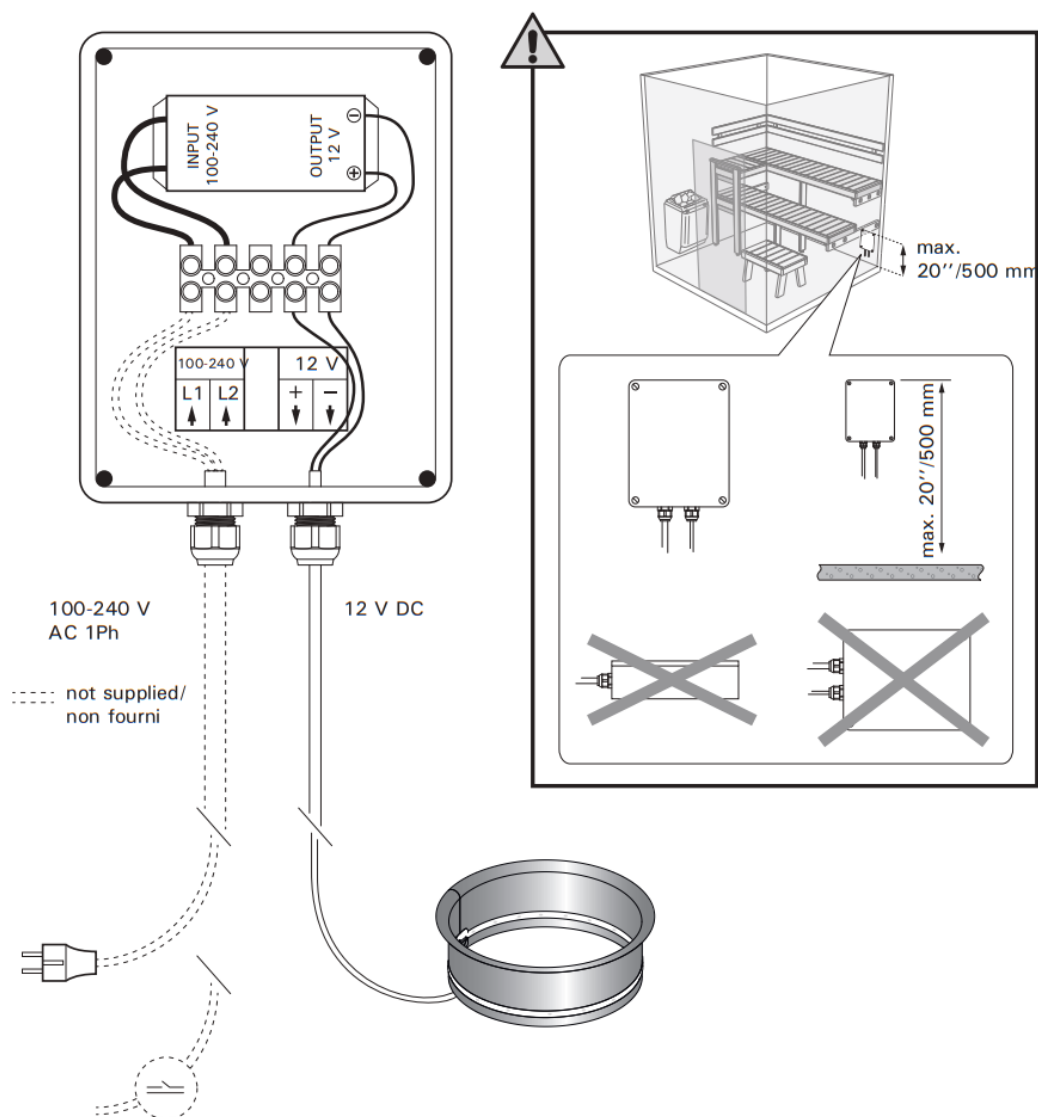
This instruction applies only to USA/Canada

Model	HPCU2L	HPCU7L
HPC(S)7U1H	x	—
HPC(S)9U1H	x	—
HPC(S)11U1H	—	x
HPC(S)7U3H	x	—
HPC(S)9U3H	x	—
HPC(S)11U3H	—	x
HPC(S)7U1HB	x	—
HPC(S)9U1HB	x	—
HPC(S)7U3HB	x	—
HPC(S)9U3HB	x	—





**NOTE!** The benches' distance from the heater can be less than specified in the heater's installation instructions when Harvie HPCU2L/HPCU7L embedding flange is used. See also heater's instructions for installation.

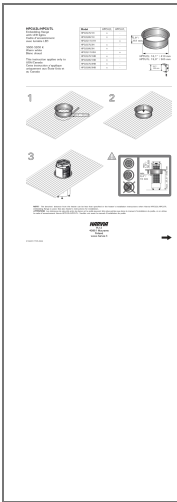


This product may only be connected to the electrical network in accordance with the current regulations by an authorized, licensed professional electrician.

# HARVIA

PL12 40951 Murage  
Finland [www.harvia.fi](http://www.harvia.fi)  
+358 207 464 000  
[harvia@harvia.fi](mailto:harvia@harvia.fi)

**Documents / Resources**



[HARVIA HPC\(S\)7U1H Embedding flange with LED Lights](#) [pdf] Instruction Manual  
HPC S 7U1H Embedding flange with LED Lights, HPC S 7U1H, Embedding flange with LED Li  
ghts, flange with LED Lights, LED Lights, Lights